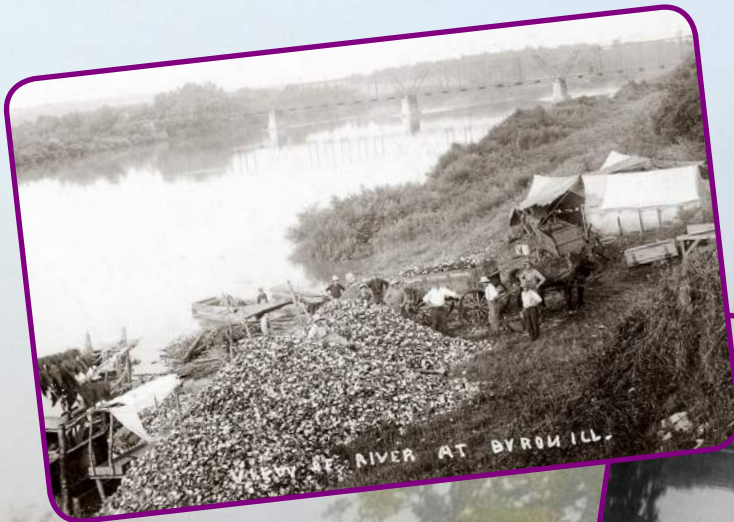


The Blaze

Summer 2014



Byron Forest Preserve
District

Inside this issue...
Old River Tales Musical
New Preserves Open
PrairieView's Menu
Summer Camp
Outdoor Concerts



from the director



Many great things are happening this summer at the Forest Preserve to enhance your experience whether it's playing a round of golf or hiking along a trail! Come on out to enjoy the summer at your Forest Preserve.

I would like to welcome Saro Costa to the PrairieView GC Clubhouse staff as our new Food and Beverage Manager. Saro brings an added dimension with new menu offerings and the ability to create a pleasurable dining experience. So stop by to have a great burger and a cold beer on our deck. Join us after your round of golf or for dinner while watching a beautiful sunset over the course.

For the local hunters, make sure you get into our lottery drawing for bow hunting at the District's Colman and Barrick Preserves, the date for the drawing is August 9th. Attention Dog Walkers...we will be constructing a small shelter at the Ripplinger/Gouker Preserve so you can rest in the shade on those balmy days of summer. Please enjoy the new park and refrain from walking your dogs at the other sites. We will be enforcing the "No Dog" rules much more intensely.

I would also like to address some concerns about installing fences on District properties and the District's intentions. We have received emails and comments about the reasons the District installs fences. Neighbors ask, 'why are you trying to keep us out,' 'can I have a gate from my property to yours,' etc. All good questions and here are some of those answers. We are never trying to keep anyone out, rather we are trying to keep our patrons in and not trespass onto neighboring properties. Another answer is *Safety, Safety, Safety*, we need to control how many intrusions there are into District properties so when we conduct burns, hunting programs, or other programs, we can post signage, monitor the entrances if needed, and inform the public of these activities. There are drawbacks to manmade objects but marking our borders is the least we need to do to keep District property protected from mini-bikes, snowmobiles, and the occasional joy rider through the preserve. Unfortunately, this has happened a few times with the vehicle being a total loss. For these reasons, fences just make good neighbors!

Todd Tucker
Executive Director

Cover Photos: (Top to bottom of cover page)

In the late 1800s and early 1900s, the Rock River was an important part of every day life in the Byron area. This summer, the Forest Preserve is offering several programs and events that relate to the Rock River. This sampling of photos was borrowed from the Byrom Museum of History. Everyone in the photos has not been identified. Please call 815-234-8535 x224 if you recognize anyone in the photos.

Clamming and fishing the Rock River was important to the people of Byron. **Boating** was a way of transportation back then, as well as for fun and sport. The **Byron Bicycle Club**, Fall 1896. Handwritten on the back of this photo...Harry Hogan, J. Gill, Sandy, Hi Hogan, Ascer Duel, G. Nott and F. Nott.

The background photo was taken by Gary Gullett, Photo Safari Network.

BOARD OF COMMISSIONERS

President

Jeff Ludwig

Vice President

Sandy Brooks

Treasurer

Trevor Hogan

Secretary

Dave Breen

Commissioner

Brad Auker

BOARD MEETINGS

Held on the third Monday of each month at 7pm at the Jarrett Prairie Center.



THE MISSION

*Preservation ~ Education
Recreation*

To provide for Preservation of openspace/natural resources, to provide Education concerning our natural environment/heritage, and to provide Recreation opportunities and enterprise operations that are consistent with our District goals.



THE BLAZE

Issue #33

Summer 2014

Please keep this issue thru August 2014

Editor, Design, & Layout

Michelle Gerke, CPRP

contents



Summer Camp - Page 4-5



PrairieView's New Menu - Page 17

2	from the director
4-5	summer day camp
6-8	programs
9	preschool
10-11	trips
12	summer concerts
13-15	land management
16-23	prairieview golf club
24-26	good stuff
27	directory

Byron Forest Preserve District

7993 North River Road, P O Box 1075, Byron IL 61010 ~ P-815-234-8535 ~ F-815-234-8635

Connect with us!



Register online at www.byronforestpreserve.com



Summer Day Camp

The Byron Forest Preserve has a whole summer of awesome activities planned that will keep you busy and out of the house! Every week, we'll have special activities and field trips planned around a theme. Of course, we'll also have time for traditional camp games, activities, and crafts that take advantage of our trails and open spaces. Whatever your interests, each week, you'll find something fun, learn new things, and make great friends!

Our goal is to guide campers in developing skills such as fair play and conflict resolution while keeping them engaged in activities that cultivate their minds, spirits, and bodies. We strive to make camp fun for participants of all ages, interests, and abilities.

June 2nd – August 8th

Monday–Friday – 9am–4pm

\$100 per week & \$80 per week (sibling)

Latchkey Care

\$10 per week / 7–9 am & \$5 per week (sibling)

\$10 per week / 4–6 pm & \$5 per week (sibling)

Please register by calling 815-234-8535 x200. Register by the Wednesday before camp begins. The field trip schedule may change due to availability. Field trips, snacks, drinks, camp shirt and all crafts are included in the weekly camp fee.



Themes & Field Trips

Week #1 / June 2-6 Discovery Channel

Have you ever wanted to host your own television show for the Discovery Channel? You'll get a chance to learn to handle some of our native animals, spend time in the field stalking wildlife, and using a camera to film it. We'll close out with a trip to Summerfield Farm and Zoo, where we can get up-close and personal with lots of different animals.

Week #2 / June 9-13 SuperSize!

BIG games, BIG artwork, BIG crafts! Everything about this week is super-sized, even our field trip - we're heading to Schaumburg, where we have time reserved at Gameworks and Legoland!

Week #3 / June 16-20 Exploration into the Unknown

Lewis and Clark set off on a voyage into the unknown 210 years ago. Along the way, they documented their discoveries in drawing and writing. We'll do something similar in our woodland and prairie: explore (the somewhat unknown) and document with pencil, pen, camera, and video. We'll also head to Donley's Wild West Town for a taste of how the west opened up after Lewis and Clark blazed the trail.

Week #4 / June 23-27 Dem Bones

We'll have activities about archaeology and paleontology, and learn about the Indian Mounds in our area, as well as the fossils of animals that used to live in Illinois. On Friday, we'll head to Beloit and the Logan Museum for a cool tour of their Indian Mounds and behind the scenes look at their collection of artifacts.

Week #5 / June 30-July 3 Spy Kids

Invisible ink, coded messages, disguises...We can't say too much more about this week--it's classified information. Hint: Bring a bathing suit! Our field trip will be on Thursday this week--no camp on Friday. (Reduced fees, \$80 & \$60/sibling)

Week #6 / July 7-11 Summer Olympics

You don't have to be an athlete to enjoy this session. We'll play lots of games and hand out medals (for many different things); we'll have team relays, obstacle courses, kayak races at Lake Louise, and more! On Friday, we'll skate--rollerskate that is, at White Pines Rink.

Week #7 / July 14-18 Make Your Own...

We'll put together lots of concoctions this week, from sidewalk chalk and facepaint to water balloon launchers. Have an idea too? We'll try it out! Then we'll make our own fun and cool off at Lena's Splashland on Friday.

Week #8 / July 21-25 Around the World

This week is all about games, crafts, traditions, and even snacks from other countries! Experience something a little different and learn some cool stuff! We'll visit Anderson Japanese Gardens and Klehm Arboretum on Friday.

Week #9 / July 28-Aug. 1 The Micro and The Mini

We've done some really big things, and now it's time to shrink down to the realm of the really tiny. This week, we'll pull out all of the magnifying glasses and microscopes to take a look at the little things around us. We'll also create tiny terrariums to take home and keep! On Thursday (note Thursday field trip), we'll get to explore the small stuff at the Discovery Center.

Week #10 / August 4-8 Astronomy

We'll learn about our place in space and have planet-sized games and crafts. Our overnight camp-out will be at the end of the week, when we'll go out for a night hike, look through our telescope, and watch the perseid meteor shower. Registration for the overnight is open to campers from any session. For our extended Friday field trip we will head to the Cernan Earth and Space Center at Triton College.

Overnight Campout \$25 / August 8-9

From 6 pm, Friday, Aug. 8, until 10am, Saturday, Aug. 9, join us for our traditional overnight program! We supply tents, food, snacks, and activities, including a night hike, stargazing, games, campfire, s'mores, and more. Plus, we'll play a ton of games with glow sticks to light up the night! This is a separate registration and fee. Registration is open to all campers, not just those signed up for the final week.

Connect with us!



Register online at www.byronforestpreserve.com

programs



Ogle County Spring Bird Count

Join the rest of the state in conducting this annual count. Bring your own binoculars and field guides. We will search the Forest Preserve sites to see a wide variety of bird species.

Where: Meet at Jarrett Center
When: Saturday, May 3
Time: 7 - 10 am
Cost: FREE
Ages: All
Min./Max.: 5 / 25

Register by noon on May 2.

Beekeeping Workshops

Did you hear the buzz? These workshops are the place to bee!! You will learn techniques and tools of the trade. *Bring your bee suits!!

Where: Jarrett Prairie Center
When: Sundays
May 18*, June 8*
July 13*, August 10*
Time: 2 - 4 pm
Cost: \$2 / person
Ages: 3 and up
Min./Max.: 5 / 25

No registration required.



Mother's Day Weekend Wildflower Walk -NEW-

Take a guided morning wildflower walk with Mom and enjoy the many spring flowers that are in bloom.

Where: Meet at Jarrett Center
When: Saturday, May 10
Time: 9 - 11 am
Cost: FREE
Ages: All
Min./Max.: 5 / 25

Register by noon on May 8.

Summer Bird Census Hikes

Join us on an easy walk through the prairies and woods of our Forest Preserve sites. We will visit a different location for each hike. A wide variety of bird species will be viewed. Bring your binoculars and field guides.

Where: Meet at Jarrett Center
When: Fridays
May 16, June 13 & 27,
July 11, & August 8
Time: 8 - 11 am
Cost: FREE
Ages: All
Min./Max.: 5 / 12 or more

Register by noon on 5/15, 6/12, 7/10, 8/7.



Lunar Eclipse Viewing

Come see a total lunar eclipse. Stop by for a quick look or hang around for awhile.

Where: Weiskopf Observatory
When: Tuesday, April 15
Time: 11 pm - 6 am
Cost: FREE
Ages: All
Min./Max.: 5 / 40

Register by noon on April 14.



Eastern Bluebird

Photo by Gary Gullett, Photo Safara Network

programs



3D Archery

Practice your archery skills with lifelike targets that include bear, deer, and turkeys. Bring your own equipment or use ours.

Where: Meet at Byron/Oregon Sportsman's Club, Townline Road, South of Byron on Illinois Route 2

When: Wednesdays
June 18, July 16 &
August 20

Time: 5:30 – 7 pm

Cost: \$5 / person

Ages: 10 and up

Min./Max.: 5 / 20

Register by noon on 6/16, 7/14, & 8/18.

Perseid Meteor Watch

We'll discover the beauty of shooting stars during this annual event. Bring binoculars or use ours. A blanket or lawn chair may come in handy too!

Where: Weiskopf Observatory

When: Friday, August 15

Time: 9 pm – Midnight

Cost: FREE

Ages: All

Min./Max.: 5 / none

Register by noon on August 13.



Guided History Canoe Tours of the Rock River - ^{-NEW-} Byron-Oregon, Illinois

Take a scenic guided local history canoe tour down the Rock River from Byron to Oregon with the Forest Preserve's Superintendent of Education and local historian, Mark Herman. This two-hour paddle tour will feature stories about the land and historic places that can be seen along the shore of this scenic stretch of the river.

We will take out above the Oregon Dam at Oregon Park East and end the day with a tour of the 1883 Chana School Museum. Must have at least one adult per canoe and no more than three people per canoe.

Where: Meet at Jarrett Center

When: Saturdays,
May 31 & June 28

Time: 9 – 11 am

Cost: \$10 / person

Ages: 12 and up

Min./Max.: 3 / 12 canoes

Register by May 28 & June 25.



Fossil Hunt

We'll be digging through piles of dolomite limestone before there is any spring growth to see what we can find. Bring a hammer and a bucket. Safety goggles and fossil guides will be available.

Where: The quarry behind the Land Management Center, 6845 German Church Road, Byron

When: Saturday, April 19

Time: 10 am – 2 pm

Cost: \$2 / person

Ages: All

Min./Max.: 5 / 20

Register by noon on April 16.

Birthday Parties

Choose the Forest Preserve to host your child's next birthday party. Several themes are available. Cost includes a two-hour room rental. The Deluxe Party accommodates 12 children (\$30 upcharge for more than 12) and includes program, cake, ice cream, tableware, and a banner. The Standard Party accommodates 12 children (\$5 per additional child) and includes the program only.

Deluxe Party ~ \$75

Deluxe Tea Party ~ \$100

Standard Party ~ \$45

Standard Tea Party ~ \$60

Connect with us!



Register online at www.byronforestpreserve.com

programs



Webelo Badge - Naturalist

Learn about our native ecosystem, including dangerous plants and animals and local flyways for birds. We'll also go outside to look for signs of the soil cycle and play a game to learn about the food chain.

Where: Meet at Jarrett Center
When: Saturday, April 19
Time: 3 - 6 pm
Cost: \$5 / webelo
Ages: Webelos
Min./Max.: 5 / 20

Register by April 17.

Hunter Education

This 3-day Illinois Department of Natural Resources required class covers ethics, and firearms and archery safety. This class fills quickly!

Where: Jarrett Prairie Center
When: Mon., Wed., Fri.,
April 21, 23, & 25
Time: MW-6-9pm, F-6-10pm
Cost: FREE
Ages: All
(must be able to pass a written test)
Min./Max.: 5 / 60

Register by noon on April 19.



Milkweed Beetle on Milkweed

Junior Girl Scout Badge Girl Scout Way

One of the choices to earn the Girl Scout Way badge is to learn about the history of your area. We'll explore the museum for a short time and you'll hear some of the secrets of the Lucius Read House. Then, we'll walk over the Rock River--a very important part of Byron history--and through the grout house and barns at the Forest Preserve's Heritage Farm Museum. We'll have time for lunch and we'll cook some cornbread over a fire so you can see how it was done in the old days. Please bring a sack lunch and drink.

Where: Meet at the Byron Museum of Natural History and pick up at the Heritage Farm Museum
When: Saturday, April 26
Time: 10 am - 1 pm
Cost: \$5 / scout (inc. patch)
Ages: Jr. Girl Scouts
Min./Max.: 8 / 20

Register by April 22.



Homeschool

Signs of Spring

Things will be starting to grow out here on the prairie and in the woodlands. What tells flowers and trees that it's spring? How do insects know when to emerge, and where have they been all winter? We will learn about how the plants and animals wake up and prepare for summer and along the way we will look at leaves, wildflowers, animals and their tracks and much more. Bring a sack lunch. Snacks and drinks will be provided.

Where: Jarrett Prairie Center
When: Friday, April 25
Time: 10am - 2pm
Cost: \$5 / person
Ages: 6 and up
Min./Max.: 5 / 20

Register by noon on April 22.



preschool programs

New Addition

A new state-of-the-art computer SmartBoard (right) was installed in February for the Forest Preserve's Preschool Program that is held at the Keller Education Center. Our teachers and students are very happy with the new SmartBoard and wonder how they ever got along without it! This specially designed preschool education teaching tool will enhance learning opportunities for the 80+ three-, four-, and five-year-olds who attend our program as well as the students who attend our Summer Adventure Club program.



Get your kids ready for kindergarten by enrolling them in our structured preschool classes. The Tuesday/Thursday classes are geared toward 3-year-olds and younger 4-year-olds. The Monday/Wednesday/Friday classes are geared toward older 4-year-olds and younger 5-year-olds. Children must be at least 4 years old to attend the three-day class. They must be at least 3 years old to attend the two-day class. Children must be potty trained. Immunization records are required. You may register your child at anytime throughout the year if your child's birthday is later in the year. Please call 815-234-8535 ext. 200 for more information. First day of school will be August 25 for M/W/F students and August 26 for Tu/Th students.

Where: Keller Education Center
Ages: 3-5 years
When: Mon/Wed/Fri or Tues/Thurs
Time: 8:45-11:15 am or 12:30-3 pm
Min/Max: 6/30-M/W/F morning & 6/20-M/W/F afternoon
6/16-TU/TH morning & afternoon
Cost: \$110/month-M/W/F
\$90/month-Tu/Th

Registration is ongoing throughout the year.

Meet the Teachers / Open House
Thursday, August 21 ~ 5-6:30 pm

Adventure Club

It's summer but preschool fun doesn't take a vacation! Sign up your 3-6 year old for some fun in the sun at the Forest Preserve. We meet for two-week sessions from 9-11am. Sign up for one or all four sessions. We will enjoy social time with fellow preschool aged friends in the prairie, the woods, and the playground (weather permitting). We will also interact in the classroom, playing games, completing activities, and rotating through hands-on learning stations. Join Mrs. Joni and Mrs. Crystal for a great summer at the Keller Education Center!

Where: Keller Education Center
(near Jarrett Center)

When: Monday/Wednesday or
Tuesday/Thursday
Session #1 - June 2-12
Session #2 - June 16-26
Session #3 - Jun 30-Jul 10
(no class on July 4th)
Session #4 - July 14-24

Time: 9 - 11 am
Cost: \$40 / person / session
Session #3 - \$30 / person
Ages: 3 - 6
Min/max: 6 / 16

**Register by the Thursday before
each session begins.**

Connect with us!



Register online at www.byronforestpreserve.com

trips



Dane County Farmers' Market

~NEW~

We are on our way to Madison, Wisconsin to attend the largest producer-only farmers' market in the country. Up to 160 different vendors will be selling Wisconsin produced fruits, vegetables, herbs, plants, flowers, cheeses, meats, and bakery products on the Wisconsin Capitol Square in downtown Madison. Bring your own shopping bags and take home some of the summer's best fresh produce from this outstanding farmers' market...leave the driving to us. Lunch will be an additional cost.

Where: Meet at Jarrett Center
When: Wednesday, July 16
or Saturday, August 2
Time: 7 am - 3 pm
Cost: \$15 / person
Ages: All
Min./Max.: 5 / 24

Register by noon on 7/14 & 8/23.



Morton Arboretum

~NEW~

The Morton Arboretum in Lisle, Illinois, has been a leader in plant and tree conservation since 1922. More than half of its 1700 acres are made up of natural woodlands, prairies, and wetlands. Come experience the arboretum's extensive tree and plant collections, interactive children's gardens, natural playgrounds, tree houses, exclusive gift/book store and miles of hiking trails. Cost includes transportation and admission to the arboretum. Lunch is on your own.

Where: Meet at Jarrett Center
When: Saturday, June 7
Time: 8 am - 4 pm
Cost: \$24 / Adult
\$23 / Senior
\$21 / Child (ages 2-17)

Ages: All
Min./Max.: 5 / 24

Register by noon on June 4.



Prairie Crossing Learning Farm & Grayslake Heritage Center

~NEW~

Take a guided tour of the Liberty Prairie Foundation's Prairie Crossing Learning Farm, a working organic farm, and learn about organic farming, composting, cover cropping, greenhouses, and the multiple roles of chickens. The Learning Farm along with its nearby restored prairies is part of the Prairie Crossing Conservation Community, one of the premier planned sustainable communities in the country. Following lunch, we will visit the national award winning Grayslake Heritage Center and Museum to learn more about the unique history of the area. Cost includes tour admission for both facilities and transportation. Lunch will be an extra cost.

Where: Meet at Jarrett Center
When: Friday, June 27
Time: 8 am - 5 pm
Cost: \$24 / person
Ages: Teens and Adults
Min./Max.: 5 / 24

Register by noon on June 23.

Ideas??

Do you have a great idea for a program or a trip destination that you would like for us to offer? Or, do you need a specific badge offered for your scout group? Please let us know by calling Richie at 815-234-8535 x217 or Janet at x232. You could also go to our website, www.byronforestpreserve.com to email us. We look forward to getting suggestions from you!

trips, etc.



Archeology Hands-On History Day

~NEW~

The Rock River Valley is home to dozens of Indian mounds and prehistoric sites. Learn more about prehistoric tools and weapons through hands-on demonstrations at this first time interactive event. Try your hand at using an atlatl spear thrower. Instructors from the World Atlatl Association will be on hand to teach the art of throwing spears with atlatls, a type of spear thrower that has been used for over 30,000 years. There will be special ongoing demonstrations of arrowhead and spearhead making techniques by nationally known flintknapper, Larry Kinsella. Larry has been teaching flintknapping for 34 years. He will provide all materials and safety equipment to teach beginning flintknapping, the art of making stone tools from flint. Talk to professional archeologists about your own collection of points, prehistorical tools, and other items that you have found.

Where: Meet at Jarrett Center
When: Sunday, July 20
Time: 10 am - 2 pm
Cost: FREE
Ages: All

No registration required.

"Behind the Scenes" Restoration Tours

~NEW~

Take a hike with one of our Restoration Department staff and see the areas of the preserve that they are currently working on, the latest wildflowers that are in bloom, and any other interesting seasonal wildlife activity that they have observed. These special tours will go off the trail to places not normally seen by the public. Wear long pants, sturdy shoes, and dress for the weather.

Where: Meet at Jarrett Center
When: Wednesdays
May 7, June 11,
July 9, August 6
Time: 6 - 7:30 pm
Cost: \$5 / person
Ages: All
Min./Max.: 5 / 20

Register by 3pm on 5/5, 6/9, 7/7, & 8/4.



Garfield Farm Museum & Heirloom Garden Show

~NEW~

We'll head to LaFox, Illinois to experience the Garfield Museum's 25th Annual Heirloom Garden Show and view plant varieties that are seldom seen today. Interact with dozens of Midwestern growers showing their favorite heirloom flowers, herbs, fruits, and vegetables. The show highlights the importance of preserving genetic diversity of plants that were popular in American culture from at least 50 to 100+ years ago. Many garden seeds, plants, and products will be for sale. The 1840s Garfield Farm and Tavern, listed on the National Register of Historic Places, and its 374 acres of historic gardens, barns, restored prairie and savanna will also be open for tours during this special event. The trip cost includes transportation and admission to the museum. Food and refreshments will be available on site for an additional fee.

Where: Meet at Jarrett Center
When: Sunday, August 24
Time: 8:30 am - 4 pm
Cost: \$20 / person
Ages: All
Min./Max.: 5 / 24

Register by noon on August 21.

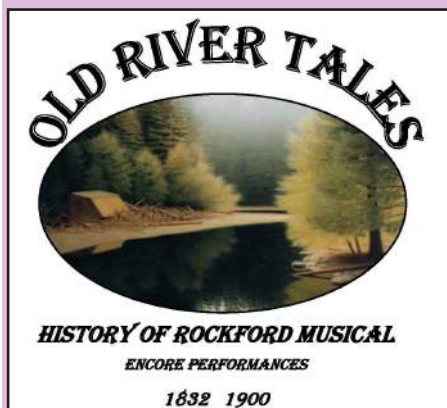
Connect with us!



Register online at www.byronforestpreserve.com

summer concerts

Special Summer Performance...



Sunday, June 1st, 7pm
Jarrett Prairie Center
7993 N. River Rd., Byron

Old River Tales is an original musical play about life around Rockford and the Rock River Valley from the frontier beginnings in the 1830s up until 1900 as it was settled by many different ethnic groups. The play includes famous characters such as Abraham Lincoln, the warrior Blackhawk, Albert Spalding, and Jane Addams. Additional characters, the Irish, the Swedes, and emancipated African American slaves represent the many diverse populations who, while risking everything, fled to the Rockford area for a better life.

There is no admission. The play runs for two hours with an intermission. Between and during dramatic scenes, the performers will sing 15 well-known 19th century songs such as "Down by the Riverside," "Rock of Ages," and "Swing Low Sweet Chariot." The audience will always be encouraged to sing along with the performers. Old River Tales was written and directed by Rockford's Sue Crandall and Rufus Cadigan, and has been presented at Midway Village Museum, Rockford University, and other area venues.



Patchouli
June 29



Backroads Trio
July 27



Bluegrass Reunion Band
August 3

Sponsored by:



Byron Bank

(see ad on back cover)

Unless noted otherwise, concerts are held at the Heritage Farm Stage on Sundays at 7 pm. The Heritage Farm is located at 8059 North River Road, Byron.

land management



By Russell Brunner
Superintendent of Land Management

Prairie Preserve Notes

New Preserve Opening This Summer

In late 2012, the District acquired the parcel of property adjacent to the existing HeLeo Wetland Preserve located off Rt 2 south of Byron at the confluence of the Leaf River into the Rock River. This property was previously the Mt. Morris Boat Club. The preserve (below) will be open as a boat park accessible to boaters by the river only. There is no ramp access or truck and trailer parking at the preserve. Visitors are also welcome to come and enjoy the river park area, oak hickory woods, and wetland via preserve access off of Rt. 2. The preserve is currently under development. Sand volleyball and horse shoe pits will be installed this summer as well. The site contains a park shelter, picnic tables, and restroom access.



Spring Burning & Weed Management

The major management activities you may see ongoing in the spring and early summer are prescribed fires and invasive species management. Read the article in this Blaze issue by Austin Webb to learn more about the important role of prescribed burning in our natural areas. After burning, plants soon begin to emerge from the ground. Many are native, some are not. Our staff are then busy for the next several months working to control and remove the non-native weeds from our preserves through a number of methods from hand pulling to mowing and herbicide applications.

Read Katie Sullivan's article on Garlic Mustard to learn about one of our woodland invasive species and how we work to control it. If you witness summer mowing in the preserves, it is being done to control large patches of invasive species. As we reduce the weeds in our preserves, we also reduce the need for future mowing and herbicide use.

Dogs Are Allowed

Beginning summer of 2014, the trail systems that run through the Ripplinger-Gouker and Etnyre Preserves are officially open to dog use. All dogs must be on a leash no longer than 15' at all times. Dogs must stay on trails. Additional rules available on site in the trails brochures located off of the parking lot. Access to these preserves is on Townline Rd, ½ mile west of Rt 2 south of Byron. Parking lot and signage on the south side of the road.



At this time, these trails are the only preserve trails open to visitors with dogs. The Don Hamer Recreation Path also allows dogs on a leash. The Don Hamer path runs from Sunshine Park in Byron across the bridge and up to the Jarrett Prairie Center. The Jarrett Prairie Nature Preserve trails are not for use by dogs. The Illinois Nature Preserves Commission forbids pets within State Nature Preserves because of the possible disturbance to sensitive plants and wildlife living within the preserves. Dogs are also not allowed at the Stephen Nardi Equine Preserve to avoid dog/horse interactions and possible risk to equine riders.

Connect with us!



Register online at www.byronforestpreserve.com

garlic mustard

Alliaria petiolata



By Katie Sullivan
Asst. Supt. of Restoration

2nd year flowering plant



seed pods on
2nd year plant

Garlic mustard is one of the worst exotic invaders of deciduous woodlands in Illinois. It has the ability to crowd out and destroy all of the native wildflowers in an area. This plant was introduced to the country as a potted herb, because the leaves of the plant are edible and can be consumed raw in salads or cooked and seasoned like spinach. It has a strong garlic smell and taste which is why it received its common name: Garlic Mustard.

Garlic mustard is a biennial flowering plant that grows 1-3' tall, forms large colonies, and readily re-seeds itself. During the first year of the plants life cycle, the plant only has rosette / basal leaves and works on growing its root systems. In the second year, the plant will bolt, flower, and set seed. During late spring and early summer, it produces a small cluster of white flowers that is then replaced with long slender seed pods.

We dedicate a good amount of time to trying to eradicate garlic mustard from our woodlands and savannas. We apply herbicide to the basal leaves when the temperatures are above 50 degrees. Once the plant has started to flower, we can no longer treat it with herbicide and must begin to hand pull the plant. It is important to remove most of the roots when pulling garlic mustard because otherwise, the plant will re-sprout from the roots, flower

and set seed. After hand pulling the plant, we must properly dispose of the plant because often the roots will have enough "food" stored in its roots that it will go ahead and set seed even after it has been uprooted. Prescribed fires are also helping to control this invasive plant by killing off young seedlings before they have a chance to mature and set seed.

Garlic mustard is a nasty shade loving plant that if left unmanaged will spread throughout the woods, eventually displacing the native plants that once grew in the area. If you are interested in volunteering to help pull garlic mustard and get it out of our native woodlands, please call: 815-234-8535 ext221 or ext219.



first year plant

restoration

& fire



By Austin Webb
Restoration Technician

Ecological restoration and prescribed fire are synonymous when dealing with our local, Illinois natural areas. In a nutshell, restoration work involves taking a parcel of land, or landscape, and transforming it into its pre-European settlement condition. Sort of like taking a beat-up, classic car and restoring it to its pre-ownership condition. In both scenarios there are parts that are still intact and parts that are missing, as well as an in-depth knowledge required to determine the best approach toward accomplishing the desired result. Similarly, just as tools are important in restoring an automobile, fire is the most important tool we have in restoring and maintaining our natural areas.

Before jumping ahead too far, let's think about what things were like in our area prior to the arrival of Europeans. Vast acres of prairie and savanna dominated the landscape, along with wetlands, mesic woodlands, floodplain forests, and other niche habitats. Wildlife, such as bison, roamed unrestricted through the open prairie feeding on this endless natural pasture, and the Native Americans moved seasonally to follow the bison. Even before the Native Americans came to North America, fire had played an important role in shaping the continent. Droughts in the Western Plains followed by lightning storms and strong winds pushed massive wildfires into the Midwest where blazes could continue on as far as the Eastern Deciduous Forests. In most cases, even the Mississippi River could not spare the Eastern Tallgrass Prairies of Illinois from these massive infernos. These natural fires were in control of North America's landscape just after the end of the Wisconsin glaciation about 10,000 years ago until the time that Native Americans started lighting the first intentional fires.

By using fire as a tool, the native peoples were able to dictate the environment they were living in. Burning off tall grasses near settlements was used to create bare ground for planting crops, to lessen the threat of ambush by other tribes, and to eliminate the threat of unexpected wildfires near their homes. Consequently, fire could also be used as a weapon during conflicts with other tribes. However, most importantly, fire was used as a tool for attracting wild game. Areas burned during fall would green-up much sooner



prescribed burn conducted in fall 2013

in the spring than unburned areas, providing fresh shoots for elk, deer, and bison to feed on. The Native Americans would return to the areas after winter to find plentiful game to hunt.

Fast-forward to today, we have our own list of reasons to burn our natural areas. These reasons include the creation of appropriate habitat for rare birds and insects, as an economical deterrent to invasive species, to reduce the amount of woody vegetation encroaching or shading out prairies or savannas, to encourage the growth and fecundity of rare plants, and the list goes on and on. The fires we conduct locally are mild, easy to control, and altogether much safer than in other regions of the country. This is primarily due to the higher humidity levels in our area and because we use weather forecasting to pick the safest and most suitable days to burn. We maintain the proper equipment, have a trained fire crew, and have kept high quality perimeter firebreaks in place to help in conducting our burns.

Prescribed burns are conducted in the spring (usually mid-March to mid-April) and fall (no earlier than late October until mid-November or later as weather permits). During these two times of the year, our natural areas are mostly dormant and our impact to native insects and other critters are minimized. All of our natural areas are burned approximately every 2-3 years and the regiment for an individual unit is determined based upon need. Once a unit has reached a certain all-around point of recovery, we can back off our fire regiments to a 3-5 year cycle, but so far, invasive species have remained too much of a problem to let an area go that long without fire. Although fire intuitively may seem like such a destructive force, it actually helps us to construct and maintain healthy native habitats, and the impact it has on our natural landscape makes it the most powerful tool available to us in ecological restoration.

prairieview golf club

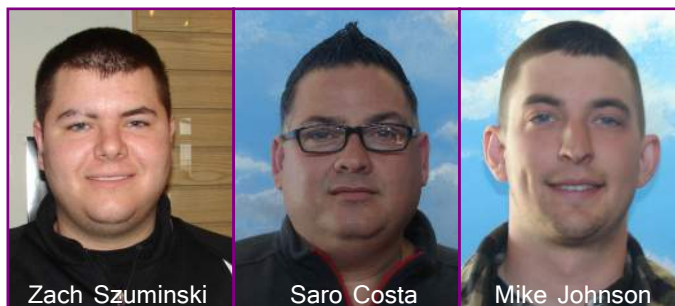
23rd Annual Gold Medal Classic

The event will take place at PrairieView May 10th and 11th and is open to men and women age 15 and above. The field will be placed into flights after Saturday's round based on the first round score and will include divisions for men, women, and seniors. Trophies and prizes will be awarded for each flight. The defending champion of The Gold Medal Classic is Andrew Canfield of Oregon (photo below) in the men's division, Elizabeth Curtiss of Byron (photo below) in the ladies division, and Rick Anderson of Sterling in the senior division. Other flight winners in 2013 include Tom Brennan of Rochelle (1st flight), Ron Reece of Rockford (2nd flight), and Doug Reber of Byron (3rd flight). The Gold Medal Classic will be the first major golf event of the year in the Byron/Rockford area. Help make this great event a success and play! Registration forms can be found on our website, prairieviewgolf.com. For information or to sign up, call 815/234-4653.



New Faces at PrairieView

You will notice some new faces at PrairieView Golf Club this season. After seven seasons as the assistant professional, Jim Marinelli has moved on to a new position. Jim is now the head professional at Short Hills Country Club in the Quad Cities. Zach Szuminski will take over the assistant professional duties. Zach has worked in the pro shop at PrairieView the past 3 years and recently graduated and played golf for the University of Illinois at Springfield. Saro Costa is another addition to the staff. Saro was hired as the food and beverage manager in February. With both a new banquet menu for golf outings and events and a new daily menu for the Prairie Grass Pub, PrairieView will be known for more than just being an exceptional golf facility!



In the Golf Course Maintenance Department, Mike Johnson is welcomed as an Assistant Superintendent under current superintendent, Matt Henkel. Mike is a 2010 graduate of Forrester High School. Mike graduated with a degree in turf management from Kishwaukee College in 2012. Mike has been an excellent employee for Prairieview for the last three seasons. Mike's work ethic and determination have made him an invaluable asset to the District as a whole. We are honored to welcome Mike as a full-time employee and we are very excited for the future of Prairieview Golf Club.

Sign up for our E-newsletter at
www.prairieviewgolf.com!

Join our VIP text club for special deals!
Text CC597 to 36000 today!

prairieview golf club

Outings & Events

There are plenty of great dates still available. We welcome groups of all sizes, any day of the week, and we specialize in customizing your outing. With the ability to seat 180 people in our banquet hall and up to 50 people in the Prairie Grass Pub (right), no group is too large or too small! Let us help you plan your next event whether you're golfing or just celebrating! For more information, please call our outing experts at **815-234-4653**.

Prairie Grass Pub...Come check out the view, the new menu, and the upcoming specials and entertainment schedule!



APPETIZERS

- Buffalo Chicken Dip with Tortilla Chips \$6.00**
Shredded Chicken Tossed in Buffalo Sauce and Shredded Cheddar Cheese. Served Warm.
- Inferno Wings \$8.00**
Marinated in Tabasco-Battered and Deep Fried 10 Wings Served with Celery and Ranch Sauce
- Naked Wings \$7.50**
Choice of Sauce-Asian Sesame or Buffalo Style 10 Wings Served with Celery and Ranch Sauce
- FRIES \$3.00**
Large Basket
- CHICKEN TENDERS \$5.75**
3 Large Fritters with Dipping Sauce
- ONION RINGS \$4.50**
Beer Battered and Fried
- CHEESE CURDS \$5.50**
Wisconsin Blended Cheese. Battered and Fried
- SAMPLER BASKET \$8.00**
Onion Rings, Cheese Curds, Fries
- NACHOS \$8.00**
Tortilla Chips Topped with Seasoned Ground Beef, Cheddar Cheese, Tomatoes, Jalapeños, and Black Olives-Served with Salsa and Sour Cream

SALADS

- Grilled Chicken Salad \$8.00**
8 oz. Breast, Tomato, Black Olives, and Cucumber over Romaine Lettuce with Choice of Dressing
- Chopped Salad \$7.00**
Ham, Turkey, Swiss, Cheddar, Tomato, and Cucumbers with Choice of Dressing

BURGERS, SANDWICHES, WRAPS

All Items Served with Fries or Cole Slaw

- Half Pounder \$7.00**
8 oz. Hand Pattied Fresh Ground Beef, Seasoned and Char-Grilled to Your Liking-Served with Lettuce, Tomato, and Pickle
Add Swiss or Cheddar for 50¢
Add Bacon for \$1.00
- Farmer's Haven \$8.50**
8 oz. Burger-Topped with BBQ Pulled Pork, Ham, Turkey, and Cole Slaw
- BBQ Pulled Pork \$7.50**
Slow Roasted and Simmered in a Sweet Tangy Sauce and Served on a French Roll
- Chicken Breast Sandwich \$8.00**
8 oz. Honey Mustard Marinated Breast Char-Grilled and Served on a Kaiser Roll Topped with Bacon and Cheese
- Italian Beef \$7.50**
Thin Slices of Seasoned Sirloin in Italian Juice. Served on a French Roll
- Steak Sandwich \$9.00**
9 oz. Hand-Cut Rib-eye Char-Grilled and Served on a French Roll
- Triple Decker Club \$8.00**
Ham, Turkey, Bacon, Lettuce, Tomato, Cheddar, and Mayo on Toasted Wheat Bread
- Chicken or Tuna Salad \$6.50**
Served on Honey Berry Wheat Bread
- Grilled Ham and Cheese \$7.00**
- Turkey Bacon Wrap \$7.50**
Served with Ranch Sauce, Lettuce, and Tomatoes
- Buffalo Chicken Wrap \$7.50**
Tenders Tossed in Buffalo Sauce with Lettuce and Tomato

Prairie Grass Pub...text CC597 to 36000 to start getting great deals today!

Connect with us!



Register online at www.byronforestpreserve.com

prairieview golf club

Golf Leagues

PrairieView offers a variety of 9-hole leagues for men, women, and seniors. All of the league play is handicapped and includes all levels of golfers from relative beginners to more advanced players. If you would like more information regarding any of the leagues offered at PrairieView or would like to inquire how to register for a league, please stop by the clubhouse or call 815/234-4653.

Senior Men's League

When: Wednesday Mornings
Time: 8 am (9 am in spring & fall)
Begins: April 23rd
Cost: \$10 for the required 9-hole handicap
\$1 per week for weekly game
Format: Individual play
(some weeks will include team play, various games)

Wednesday Men's League

When: Wednesday Evenings
Time: 5:30 pm
Begins: May 14th
Cost: \$60 includes 9-hole handicap,
year-end prize money, and banquet)
Format: Two-Person teams

Tuesday Ladies League

When: Tuesday Evenings
Time: 5:30 pm
Begins: April 29th
Cost: \$35 includes 9-hole handicap
\$1 per week for weekly game
Format: Two-person teams

Family Golf Night

Kids play FREE with a paying adult!!!

Only \$20!

(includes green fee and cart for 1 adult and 1 child)

Every Sunday Evening after 4 pm

May-September

The Spring Ultimate

An awesome two-person team event!! This 27-hole, two-person team event combines 9 holes best ball, 9 holes scramble, and 9 holes alternate shot and is guaranteed to test your skills and patience. Scheduled to start at 8 am on Saturday, May 24th, PrairieView's Spring Ultimate is another great way to start your spring golfing. The cost is \$85 per person (\$60 for passholders) and includes 27 holes of golf, dinner and drinks after golf, and over \$1,000 in prizes. For more information or to register, please call PrairieView at 815/234-4653 or visit our website at www.prairieviewgolf.com.

Men's Golf Association

An exciting season is approaching for the PrairieView Men's Golf Association. The 2014 schedule includes annual interclub matches with both Timber Pointe Golf Club and Aldeen Golf Club as well as the annual match play championship and club championship. Also scheduled for 2014 are several road trips including a bus trip in September. Participation in the events is restricted to any male age 18 and older with a certified handicap. Event sign ups will be located at the PrairieView clubhouse and any questions can be directed to the golf staff. The tentative event schedule is on the next page.

Customer Appreciation Week

Monday, April 21st through Friday, April 25th, PrairieView will hold its annual spring customer appreciation week. During this week, golf is free and golfers need only to pay \$16 per person for carts. Tee times fill up quickly so call 815/234-4653 to make sure you don't miss this great opportunity to play **FREE SPRING GOLF!**

Couples Golf Nights

Couples will be paired or sign up as a foursome for this 4-person scramble. Cost includes golf, cart, and your choice of dinner entree and drink. Sign up in the proshop or call 815-234-4653.

When: Fridays
May 16, June 13 & 27, July 18
August 8 & 29
Time: 4:30 pm (tee times begin)
Cost: \$25 (\$16/passholders)
(Cost is per person per night)

prairieview golf club

2014 PrairieView Men's Event Schedule

	Date	Day	Event
April	13th	Sunday	Masters Tournament
	27th	Sunday	Individual Low Net & Closest to pins
May	4th	Sunday	2-Person Best Ball
	10th, 11th	Saturday, Sunday	Gold Medal Classic
	18th	Sunday	Beat The Pro
	24th	Sunday	Spring Ultimate - 27 holes (9 best ball, 9 scramble, 9 alternate shot)
June	1st	Sunday	Skins
	15th	Sunday	Fathers Day/Us Open Tournament
	22nd	Sunday	2-Person Blind Draw
	28th	Saturday	Interclub Match vs. Aldeen @ PrairieView
July	4th	Friday	5 Black Tees, 5 Blue Tees, 4 White Tees, 4 Yellow Tees
	6th	Sunday	4-Person Teams
	13th	Sunday	Survivors of ByronFest
	20st	Sunday	Individual Low Net & Closest to pins
	27th	Sunday	Stableford Scoring System
August	3rd	Sunday	Interclub Match vs. Timber Pointe @ PrairieView
	9th, 10th	Saturday, Sunday	Club Championship - 18 holes each both Gross & Net divisions
	17th	Sunday	Pick a Partner
	24th	Sunday	3-Person Teams
	31st	Sunday	3, 2, 1 Best Ball
Sept.	7th	Sunday	Beat the Pro
	14th	Saturday	Fall Road Trip (Site TBA)
	21st	Sunday	Fall Ultimate - 27 holes (9 best ball, 9 scramble, 9 alternate shot)
	28th	Sunday	Skins
Oct.	5th	Sunday	2 Person Scramble
	12th	Sunday	3 Person Teams
	19th	Sunday	Chili Scramble (8:00 Shotgun start followed by Chili and Football)
	26th	Sunday	Tough Course Day

Match Play Championship

In addition to the above schedule, we will conduct the PrairieView Match Play Championship. The Match Play Championship will be played at full handicap and seated by handicap at the time of the sign-up deadline.

Sign-up deadline	June 14th
Brackets will be posted	June 17th
First Round Matches completed by	July 5th
Second Round Matches completed by	July 19th
Third Round Matches completed by	August 2nd
Semifinals completed by	August 16th
Finals completed by	August 30th

- All events are handicapped and open to anyone 18 and older with a certified USGA handicap.
- There will be individual entry fees/prize money for each event.

All events in red will have sign-up sheets located in the men's locker room with details involving the particular event.

For all other events, simply sign up in the golf shop with PrairieView Staff.

Connect with us!



Register online at www.byronforestpreserve.com 19

prairieview golf club



Turf Notes

Greg Welker
Asst. Golf Course Supt.

Winter Kill in Turf – With one of the coldest and snowiest winters in recent memory behind us, let's take some time to reflect on what ice, frigid temperatures, and snow mean to the turf. It is easy to forget sometimes that turf is like us, a living organism that has certain needs just as we do to survive and thrive. With that said, there are certain challenges that a winter like ours presents to golf courses and home lawns alike. I will now share some of the science behind this harsh winter, and how it may have impacted turf.

Crown hydration is the first type of damage we will touch upon. *Poa annua* or annual bluegrass is most susceptible to crown hydration. Even more so when mowed at green or fairway height. This issue is what we are most concerned about at Prairieview. Crown hydration is most likely to occur at the end of winter, when one or a few warm days are followed by a rapid freeze. Snow melt or a rain that is unable to drain away before the temperature drops below freezing, is the main cause of the problem. *Poa Annua* will begin to uptake water (hydrate) at lower temperatures than bent, bluegrass or ryegrass that is why it is more likely to

have this damage. The plant can begin to hydrate and then the water will freeze inside the plant cells causing them to burst just as a water pipe may do in extreme conditions. This event will then likely cause plant death and present challenges during spring green up.

Desiccation is the second type of damage to discuss. Desiccation is less common and is most likely to occur on caps of hills or areas that are frequently cleared of snow. During desiccation the plant is essentially drying out (dehydrating) when the plant is dormant or semi-dormant. Constant high winds increase the occurrence of desiccation.

Low-temperature kill is the third type of damage to discuss. The turf can also experience problems with low-temperatures even if there is no ice present. There are many factors that play into this, such as species of plant, hardiness level, amount of freezing/thawing etc. If the plant is constantly freezing and thawing, the hardiness of the plant is less than a plant that completely shuts down in the fall and keeps reserves high for the winter months. If the plant does not harden off properly then low-temperature kill is increasingly possible.

Pink and Gray Snow Mold will be the last factors discussed. Pink snow mold is fairly common in our region. Pink Snow Mold will show up as silver dollar sized spots to very large patches ranging from pink in color to brown and tan. This disease is less of a problem in taller turf grass areas where smoothness is less important. Gray Snow Mold is a much bigger concern, but less likely to occur in our region. Cold, wet conditions are needed for this disease. This disease generally shows up as round patches 1-2 feet in diameter. Severity of this is determined by length of snow cover. For there to be significant turf loss, we need at least 90 days of snow cover to occur. This year we have reached that plateau. Gray snow mold will be a concern when the snow melts for us. This will be the first time in many years that this could be the case. Due to cost, we only chemically treat our putting surfaces where smoothness is most important for these diseases.

Expect to see any or all of these types of damage when the snow is finally gone. All that can be done is to hope for a warm spring to get grasses growing and recovering quickly. With the worst behind us, it is time to get out and get excited about golf for a great 2014 season. We look forward to seeing all golfers for the great year to come!

Photo left: Superintendent Matt Henkel checking #14 green.





Junior Golf Summer Competitive League

The Junior Golf Summer Competitive League is designed for kids entering middle school through high school (ages 12-18) to experience golf in a competitive team atmosphere. Junior golfers must have previous experience on the golf course and have the ability to play golf with minimal supervision. Juniors who have not been on the course or don't have the ability to play 9 holes are encouraged to register for the junior developmental lessons.

Format: Kids will be placed on 3-person teams based on the information provided on the registration form. Requests for teams can be discussed with the professional staff at PrairieView. Teams will be divided by age and ability level to allow for an equal playing field for everyone involved. Teams will be set prior to the first day of league play. Team points will be accumulated each week by playing matches against other teams. Matches will mainly consist of a best ball format. Points and statistics will be kept throughout the year. Prizes will be awarded at the end of the season for sportsmanship, etiquette, rules knowledge, and on-course play.

Levels Defined: Intermediate Level - Has previous on-course experience. Has taken lessons and is capable of playing on the course with minimal supervision. Advanced Level - Has taken lessons and has at least two years of on-course experience. Has knowledge of etiquette and the rules of golf. Can play 9 holes in two hours and 30 minutes or less and keep score. High School Level - Has extensive on-course experience. Has played in at least five competitive tournaments and has an advanced understanding of etiquette and rules of golf.

Cost: \$80 (\$25 for juniors with season golf passes) Fee includes a NIKE team shirt, prizes, and free golf for the registered junior after 7pm throughout the summer (\$5 for accompanying adults--cart not included).

Dates: June 10, 17, 24, July 1, 8, 15, 22, 29, August 5

Time: 9 am - 12 Noon. Juniors are required to arrive by 9 am to get playing assignments.
Play will begin approximately 9:15-9:30 am each day and finish by 12 noon.

Junior Competitive League Registration

Name _____ Age _____ Male / Female

Team Preference _____
(To be assigned to a team, please leave this line blank)

Address _____ Home Phone# _____

E-mail _____

Emergency Phone# _____

Registration Fee: \$80-payable with registration \$25-season pass holders (please circle one)

Experience Level: Intermediate / Advanced / High School (please circle one)

Connect with us!



Register online at www.byronforestpreserve.com



Junior Developmental Lessons

The junior developmental lessons are designed for junior boys and girls age 5-17. Lessons are designed for beginners and intermediate golfers. Very advanced juniors are encouraged to take private instruction. Lessons will cover all facets of the game including full swing, short game, rules, and etiquette. Juniors will also receive on-course experience.

Equipment

Golf clubs will be provided at no extra charge for students who need them. Children are encouraged to have their own clubs. Please see the golf staff with any questions.

Class Size

Minimum of five students per class is required to have the class.

Cost is \$65 per session, check should be made out to PrairieView Golf Club

<u>Session</u>	<u>Date</u>	<u>Ages</u>	<u>Times</u>
#1	May (6,7,8,13,14,15) (Tuesday-Wednesday-Thursday)	5-9 years old	4:30-5:30 pm
#2	May (6,7,8,13,14,15) (Tuesday-Wednesday-Thursday)	10-14 years old	5:30-6:30 pm
#3	May (20,21,22,27,28,29) (Tuesday-Wednesday-Thursday)	5-9 year old	4:30-5:30 pm
#4	May (20,21,22,27,28,29) (Tuesday-Wednesday-Thursday)	10-14 year old	5:30-6:30 pm
#5	June (3,5,10,12,17,19) (Tuesday, Thursday)	5-8 year old	3-4 pm
#6	June (3,5,10,12,17,19) (Tuesday, Thursday)	9-12 year old	2-3 pm
#7	June/July (24,26,1,3,8,10) (Tuesday, Thursday)	5-8 year old	3-4pm
#8	June/July (24,26,1,3,8,10) (Tuesday, Thursday)	9-12 year old	2-3 pm
#9	July/August (15,17,22,24,29,31) (Tuesday, Thursday)	5-8 year old	3-4pm
#10	July/August (15,17,22,24,29,31) (Tuesday, Thursday)	9-12 year old	2-3 pm
#11	June (3,10,17,24) (Tuesday)	13-17 year old	11:30-1:00pm
#12	July (8,15,22,29) (Tuesday)	13-17 year old	11:30-1:00pm

Junior Developmental Lessons

Please circle to designate which session you will be signing up for: **#1 #2 #3 #4 #5 #6 #7 #8 #9 #10 #11 #12**

Name _____ Age _____

Address _____ City _____ Zip _____

Email _____ Phone # _____

Total Amount _____ **Please mail checks & registrations to: PrairieView Golf Club, PO Box 1075, Byron, IL 61010**



Beginner Adult Group Lessons

Are you new to golf?

Have you never played golf but want to learn?

Does trying something new intimidate you?

Then, these are the classes for you!!

As part of the PGA of America's Play Golf America Campaign, the Beginner Adult Group Lessons are designed to introduce new golfers to the game of golf. During the series of five lessons, participants will learn everything from how to hold a golf club to how to register to play a round of golf. Lesson time will be spent on both the driving range and on the golf course. The lessons are designed to be fun and interactive. All lessons will be taught by PrairieView PGA Pro Steve Murray.

Session 1	Saturdays	May 17, 24, 31, June 7, 14	9:00-10:00 am
Session 2	Wednesdays	June 18, 25, July 2, 9, 16	6:00-7:00 pm
Session 3	Saturdays	July 26, August 2, 9, 16, 23	9:00-10:00 am

Beginner Adult Group Lessons

Please circle which session you will attend: #1 #2 #3 Cost: \$80

Name _____

Address _____

Email _____ Phone# _____

Please mail checks & registration to: PrairieView Golf Club, PO Box 1075, Byron, IL 61010

Connect with us!



Register online at www.byronforestpreserve.com

good stuff

BFPD Receives Accreditation



The Byron Forest Preserve District has received accreditation from the Park District Risk Management Agency (PDRMA). PDRMA is a self-governed insurance risk pool owned and con-

trolled by members who share the responsibility for PDRMA's ongoing stability and growth. Selective membership makes PDRMA unique among pools and allows them to choose as members only those districts and agencies that meet selective criteria.

Every member must be committed to the same risk management principles, so PDRMA can foster well-managed, high-quality park and recreation agencies that work together to reduce Property/Casualty losses and support each other in risk management programs which saves money for every agency involved. The District has been a member of PDRMA for several years and just recently achieved accreditation which is a great accomplishment.

Accreditation is the highest level of achievement earned by a PDRMA member through exceptional performance on the Loss Control Review (LCR). Although it requires a strong commitment by the member agency to achieve accreditation, it is very attainable. The following is a list of criteria members must meet to obtain accreditation status:

- The agency must be a member of PDRMA for at least four full years.
- To achieve or maintain accreditation, the agency must have completed two formal Loss Control Reviews. The average of the percentage scores of the two most recently completed reviews must be at least 95%, with neither score being less than 92.5%.
- The agency must score better than the membership average for a five-year loss history cycle, in at least two of the five lines of insurance coverage evaluated. These include workers' compensation, property, general liability, employment practices liability, and pollution.

The purpose of the Loss Control Review (LCR) is to engage in a continuous effort to evaluate, develop, maintain, and enhance risk management best practices within the membership. As administered by the PDRMA risk management staff, the LCR process will actively and imaginatively identify and analyze risks, and provide members with innovative risk management best practices and solutions to eliminate or minimize the impact of loss to members.

The Byron Forest Preserve staff has worked diligently to achieve this accomplishment and it is greatly appreciated by the Executive Director and Board of Commissioners.

New Prairie State Hiking App

The Byron Forest Preserve District is now part of the Prairie State Conservation Coalition's Prairie State Hike App. This new 99 cent smart phone app will guide you through trails located in the Byron Forest Preserve District, the Nature Conservancy's Nachusa Grasslands, and many other prairie preserves and land conservation areas located throughout Illinois. The Prairie State Hike App uses text, audio, photographs, and video to describe and explain the many plants, flowers, trees, wildlife, and landscapes that you may encounter on your trail hikes. Take advantage of our latest educational tool that offers you the ability to access great high-tech interpretive experiences at multiple outdoor locations through your smart phone. Special thanks to Sam Ramirez at My Rock River Radio's River Country 101.7 and KOOL FM 95.7 for his help in providing the audio portion of our trail hikes.

**PRAIRIE STATE CONSERVATION COALITION'S
PRAIRIE STATE HIKE APP**
THIS TRAIL IS IN THE PSSC HIKE APP TRAIL SYSTEM



Search the App Store for Prairie State Hike and download the interactive trail guide. Available for iPhone and Droid Platforms



Keller Education Center Goes Platinum!

The Byron Forest Preserve District's Keller Education Center has received Platinum Leadership in Energy and Environmental Design (LEED) certification from the United States Green Building Council (USGBC) in Washington, D.C.

The certification, announced in December by the USGBC, recognizes the Byron Forest Preserve District's strong commitment to the environment and its leadership in sustainability from start to finish in construction of the Keller Education Center building.

The Keller Education Center houses the District's pre-school education classes, summer children's education programs and can be used as a teaching tool regarding green building technology.

The Platinum Award is the highest possible rating given by the USGBC and recognizes the building's many energy-efficient and green-design features. Some of these include: the use of renewable energy solar panels and a wind turbine; geothermal ground source heat pump; recycled floor tiles, countertops, and restroom partitions; use of natural light and interior lighting control systems; use of Forest Stewardship Council-certified sustainable wood products; improved indoor air quality through the use of low volatile organic compound (VOC) paints; reflective metal roofing; low flow water closets and faucets; and preferred parking for low-emitting and fuel efficient vehicles.

The Keller Education Center is one of 46 Platinum LEED-certified commercial building projects that are publicly identified in Illinois and one of only three Platinum LEED-certified education buildings in Illinois. The building is also the first Platinum LEED-certified building in Ogle County.

New Recycling Station

The Byron Forest Preserve, in conjunction with the Ogle County Solid Waste Management Department, has established a multi-bin recycling station at the Forest Preserve.

One station accepts glass, aluminum, plastic #1-#5, & #7, tin, steel, mixed paper, cardboard, and newspaper. The station is open during daylight hours seven days per week. **You no longer need to separate the items.**

We are also offering a USAgain recycling bin for clean, used clothing and shoes. This station helps keep textiles out of the landfills.

We now have a new electronics recycling bin that accepts televisions, monitors, printers, computers, laptops, notebooks, tablets, keyboards, fax machines, VCRs, DVRs, video game consoles, small scale servers, scanners, electronic mice, digital converter boxes, and cable & satellite receivers. This bin does not accept items like refrigerators, dishwashers, and water heaters. This station's hours are Monday-Friday, 6:30 am - 3 pm and it is open the first weekend of each month, 6:30 am - 3 pm on Saturday and Sunday.

Please recycle responsibly by leaving the area cleaner than when you arrived. The bins are located at the Forest Preserve's Land Management Center at 6845 German Church Road in Byron across from PrairieView Golf Club.

Recycle ~ Reuse

good stuff

Archery Deer Hunting Lottery

The Byron Forest Preserve District will be holding a lottery for archery deer hunting at two District preserves this summer for the 2014-15 and 2015-16 archery seasons. A lottery drawing will be held to randomly select six hunters for archery season hunting permission at the District's Howard Colman Hall Creek Preserve and at the Barrick Oaks Homestead Preserve. Entrants must be taxpayers to or residents within the Byron Forest Preserve District and at least 18 years of age before October 1, 2014. Each site will be monitored by a District hunt manager. Three hunters will be allowed at each site. Prior game violations can exclude entrants from eligibility.

For an application to have your name in the random lottery drawing, please stop by the Jarrett Prairie Center beginning Monday, June 2, 2014. Please have your application returned by 4:30 pm on Friday, August 1, 2014. Only one application per entrant allowed. No substitution for a winning applicant allowed, the name on the application will be the only allowed hunter.

The drawing will be held on Saturday, August 9, 2014, at 10 am at the Jarrett Prairie Center. Each hunter will be assigned to one of the two preserves. Lottery winners present at the drawing will have first choice as to which preserve they want to hunt. Absent winners will be assigned a preserve. Each preserve will have three hunters for a two-year term. After two years, the District will hold another lottery drawing. Lottery winners will be required to attend a pre-season meeting to go over rules and regulations.

The Howard Colman Hall Creek Preserve is located in the northeast corner of the District, between Meridian Rd and Weldon Rd.

The Barrick Homestead Preserve is located north of Oak Grove Rd, immediately east of Tower Rd.

Volunteers

Tuesday Morning Group

Come join us for a time of visiting, refreshments, and fun indoor projects including sorting, collating, preparing preschool crafts and items for graduation, cutting, labeling, and many other projects.

To volunteer, call 1-815-234-8535 x217.

Where: Jarrett Prairie Center
When: First Tuesday of each month
(September thru April)
Time: 8:30-11am
Cost: Free

Organized Groups

The Byron Forest Preserve has service and volunteer opportunities. We can arrange times and specific service areas for you and your group. These areas can be related to awards, badges, or just for the benefit of learning to serve your community and others. For info, call 1-815-234-8535 ext. 217.

Wednesday Woodshop Group

Come join the area men for coffee, donuts, and the opportunity to use your skills in carpentry and woodworking. New woodshop volunteers check in at the Jarrett Prairie Center before going to the Woodshop. To volunteer, call 1-815-234-8535 x217.

Where: Expo Building Woodshop
Enter at Heritage Farm
When: Wednesdays
Time: 9-11 am
Cost: Free

Individual and Family

The Byron Forest Preserve has several volunteer opportunities for individuals and families interested in sharing their time for special events, programs of both educational and recreational orientation. These events and programs run throughout the year. For more information, call 1-815-234-8535 ext. 217.

directory



General Contacts

Jarrett Prairie Center (Headquarters)

The headquarters office is open
Monday through Friday, 8am-4:30pm.
The office is closed Saturday, Sunday,
and select holidays.

Street Address

7993 North River Road
Byron IL 61010

Mailing Address

P O Box 1075
Byron IL 61010

Website

byronforestpreserve.com

Email

raul@byronforestpreserve.com

Main Phone Number

815-234-8535 x200

Main Fax Number

815-234-8635



Golf Club

PrairieView Golf Club

6734 German Church Road
Byron IL 61010
815-234-4653 (GOLF)

Education Centers

Jarrett Prairie Center Museum

7993 North River Road
Byron IL 61010
815-234-8535 x200
The museum hours are:
Mon., Wed., Fri.-8am-4:30pm
Tues., Thurs.-8am-8pm
Saturday-9am-4pm & Sunday-1-4pm.
Closed select holidays.

Keller Education Center

7993 North River Road
Byron IL 61010
815-234-8535 x200
Preschool and Adventure Club are held
in this building.

Weiskopf Observatory

7993 North River Road
Byron IL 61010
815-234-8535 x200
Open for free public viewing every Sat-
urday night from dark until three hours
after dark. Also open every Tuesday
night in July, July, and August.

Heritage Farm Museum

8059 North River Road
Byron IL 61010
815-234-8535 x200
Museum hours (April-October):
Mon., Wed., Fri.-8am-4:30pm
Tues., Thurs.-8am-8pm
Saturday-9am-4pm & Sunday-1-4pm.
Closed select holidays.

Trails

Jarrett Prairie Preserve

7993 North River Road
Byron IL 61010
815-234-8535 x200
Open from dawn to dusk for walking,
jogging, and nature exploration.

Nardi Equine Prairie Preserve

River Road
Byron IL 61010
815-234-8535 x200
Open for horseback riding, walking,
jogging, and nature exploration.

Howard Colman

Hall Creek Preserve

Walden Road
Byron IL 61010
815-234-8535 x200
Open for walking, jogging, and nature
exploration.

Ripplinger/Gouker/Etnyre Preserve

Townline Road
Byron IL 61010
815-234-8535 x200
Open for leashed dog walking, hiking,
jogging, and nature exploration.

The Barrick Oaks Homestead Preserve
is not yet open to the public but will be
opening very soon.



Byron Bank Ad
& Mailer