



Byron Forest Preserve
District

The Blaze

Summer 2015

Inside this issue...

Summer Camp / Adventure Club

New Trail on Hiking App

Summer Concerts

PrairieView Golf Club

- Electric Carts with GPS
- Expanded Menu at Prairie Grass Pub
- Remodeled Pro Shop
- More Programs & Family Events
- New All-Inclusive Pass
- PGA Junior League

from the director



I am very excited for 2015. The Forest Preserve has many new plans and programs that will continue to improve the patron experience. I would like everyone to take a close look at all of the new programs and facilities that the District has developed over the last few years and for 2015.

Andy Gramer, the new golf pro, has the summer packed full of new programs that I am sure will interest you or someone that you know. We have added a new eco-friendly electric golf cart fleet with GPS systems to enrich your golf experience. Again this year, Saro Costa will

enhance the dining experience at Prairie Grass Pub, for not only our golfers and banquet and outing guests, but walk-in patrons as well. We have also updated the pro-shop as well; we have added a couple more windows and moved the pro-shop counter to better serve the patrons and bring a more open view of the course.

The District will be doing a total renovation to the Jarrett Prairie Center's natural history museum over the next two years. The planning stage and development will take about a year. And then, during the next six months or so, the museum development company will build the exhibits off site. The installation of the exhibits will follow which will take a few weeks. The upgrade will provide a regional draw for educational opportunities for school kids. They will learn about what the local flora and fauna have to offer and how the human element affected those ecosystems not only in the past but how we are currently affecting those systems.

As for the District's financial status, our current financial stability is rated an A+ by Standards & Poor and we were able to handle the loss in EAV from the Exelon plant with our surplus revenues in the General and Capital Funds. The EAV decreased our portion by \$104,000 overall. Fortunately, we generally show a surplus greater than that between the combined funds.

For more information, please call 815-234-8535 x200 or visit our websites at www.byronforestpreserve.com and www.prairieviewgolf.com. You can also find us on Facebook, Twitter, and YouTube.

Todd Tucker
Executive Director

HOP on over!

Annual Easter Egg Hunt

Saturday, April 4 ~ 11 am SHARP!

Preschool-4th grade ~ 7993 North River Road, Byron
co-sponsored by the Byron Lions Club.

BOARD OF COMMISSIONERS

President

Trevor Hogan

Vice President

Sandy Brooks

Treasurer

Brad Auker

Secretary

Dave Breen

Commissioner

Jeff Ludwig

BOARD MEETINGS

Held on the third Monday of
each month at 7pm at the
Jarrett Prairie Center.



THE MISSION

*Preservation ~ Education
Recreation*

To provide for Preservation of
openspace/natural resources,
to provide Education concerning
our natural environment/heritage,
and to provide Recreation
opportunities and enterprise
operations that are consistent
with our District goals.



THE BLAZE

Issue #36 - Summer 2015
Please keep this issue thru August 2015

Editor, Design, & Layout

Michelle Gerke, CPRP

Cover Photo

Gary Gullett, Adventure Safari Network

contents



Summer Camp - Pages 4-5



Summer Concert Series - Page 12



What's New @ PrairieView?! - Pages 19-29

2	from the director
4-5	summer day camp
6-10	programs
11	preschool
12	summer concerts
13-18	land management
19-29	prairieview golf club
30	commissioners
31-34	good stuff
35	directory

Byron Forest Preserve District

7993 North River Road, P O Box 1075, Byron IL 61010 ~ P-815-234-8535 ~ F-815-234-8635

Connect with us!



Register online at www.byronforestpreserve.com



Summer Day Camp

The Byron Forest Preserve has a whole summer of awesome activities planned that will keep you busy and out of the house! Every week, we'll have special activities and field trips planned around a theme. Of course, we'll also have time for traditional camp games, activities, and crafts that take advantage of our trails and open spaces. Whatever your interests, each week, you'll find something fun, learn new things, and make great friends!

Our goal is to guide campers in developing skills such as fair play and conflict resolution while keeping them engaged in activities that cultivate their minds, spirits, and bodies. We strive to make camp fun for participants of all ages, interests, and abilities.

June 1st – August 7th

Monday–Friday – 9am–4pm

\$100 per week & \$80 per week (sibling)

Latchkey Care

\$10 per week / 7–9 am & \$5 per week (sibling)

\$10 per week / 4–6 pm & \$5 per week (sibling)

Please register by calling 815-234-8535 x200. Register by the Wednesday before camp begins. The field trip schedule may change due to availability. Field trips, snacks, drinks, camp shirt and all crafts are included in the weekly camp fee.



Themes & Field Trips

Week #1 / June 1-5 All That Energy!

Shake it out, run around, and use your energy! We'll follow food chains, too, and end the week at a trampoline park for a very energetic field trip.

Week #2 / June 8-12 Treasure Hunters

Scavenger hunts, treasure maps, geocaching, and more! This week, we'll find treasures of all kinds. Friday we travel to Skate Co. and Nickelworld to win some treasures, too!

Week #3 / June 15-19 Prairie Pirates

Did you know we had pirates in Illinois? It's true...we'll explore some of the area's lesser known history (and yes, also have some pirate-themed fun). On Friday, Nachusa Grasslands is giving us a special behind-the-scenes tour of their new bison herd!

Week #4 / June 22-26 Unplugged

No screens, no machines! We'll kick it old school and play games that don't require high-tech equipment. We'll make our own games, too! Our trip will take us on tours by boat and trolley in Rockford.

Week #5 / June 29-July 2 Science of the Spectrum

We'll explore science and color from animal camouflage to exploding sidewalk chalk, and learn how fireworks work. Thursday we'll head to Henry Vilas Zoo to explore colors in nature. No camp July 3rd. Reduced fee \$80.

Week #6 / July 6-10 Olympics

Back by popular demand! We have new events and plenty of opportunities for everyone to participate. Our week will end at Carlson Ice Arena and the newly renovated and updated Sappora Playworld.

Week #7 / July 13-17 Camp Quest

This week is all about adventure. We'll hike, geocache, and explore; take part in a DNR urban fishing program; see an Imagination Station show in Rockford, and more! On Friday, we'll explore Rock Cut State Park.

Week #8 / July 20-24 Hands On

We'll build, paint, staple, nail...we have lots of projects for campers to work on and put together, including derby cars and birdhouses. On Friday, we will go to the Madison Children's Museum to become "Gadget Gurus!"

Week #9 / July 27-31 It's Easy Being Green

We'll make a bunch of recycled stuff to use during the school year and learn how we can leave a smaller impact on our environment. We head to Krape Park and Splashland in Lena on Friday.

Week #10 / August 3-7 Cruisin'

It's a last chance to really feel like we're on vacation before school starts! Campers will be pampered by our staff as any cruise guest should be. Take part in "onboard" activities, play shuffleboard, or just lounge around. Our Friday trip will be to Pearl Lake in South Beloit.

Overnight Campout \$25 / August 7-8

From 6 pm, Friday, Aug. 7, until 10am, Saturday, Aug. 8, join us for our traditional overnight program! We supply tents, food, snacks, and activities, including a night hike, stargazing, games, campfire, s'mores, and more. Plus, we'll play a ton of games with glow sticks to light up the night! This is a separate registration and fee. Registration is open to all campers, not just those signed up for the final week.

Connect with us!



Register online at www.byronforestpreserve.com

programs

Ogle County

Spring Bird Count

Join the rest of the state in conducting this annual count. Bring your own binoculars and field guides. We will search the Forest Preserve sites to see a wide variety of bird species.

Where: Meet at Jarrett Center
When: Saturday, May 9
Time: 7 - 10 am
Cost: FREE
Ages: 10 and up
Min./Max.: 5 / none

Register by noon on May 6.

Beekeeping Workshops

These workshops are the place to bee!!
Learn techniques and tools of the trade.
*Bring your bee suits!!

Where: Jarrett Prairie Center
When: Sundays, April 12,
May 17*, June 14*,
July 12*, August 9*
Time: 2 - 4 pm
Cost: \$2 / person
Ages: 3 and up
Min./Max.: 5 / 25

No registration required.

Hunter Education

This 3-day Illinois Department of Natural Resources required class covers ethics, firearms safety, and archery safety. This class fills quickly!

Where: Jarrett Prairie Center
When: Mon., Wed., Fri.,
April 20, 22, & 24

Time: MW-6-9pm, F-6-10pm
Cost: FREE
Ages: All

(must be able to pass a written test)

Min./Max.: 5 / 60

**Register by noon on April 16 or earlier
for a better chance of getting in.**



Red-Headed Woodpecker

By Gary Gullett, Adventure Safari Network

Woodpecker Walks

Come out and enjoy a guided early morning birding excursion to the savannas and wooded areas of our preserves to look for red-headed woodpeckers (and other birds). Our preserves are home to several woodpecker species including threatened red-headed and pileated woodpeckers. We will be trail walking and also might travel via District vans to other preserves in order to view prime woodpecker sites. Bring your binoculars (or borrow ours). Be sure to wear sturdy walking shoes and dress for the weather.

Where: Meet at Jarrett Center
When: Saturdays
April 18, June 13, July 11
Time: 7 am
Cost: FREE
Ages: 10 and up
Min./Max.: 5 / 20

Register by noon on 5/15, 6/10, & 7/8.



Canoe Tours of the Rock River - Oregon, Illinois to Castle Rock State Park

Take a scenic two-hour guided canoe tour down the Rock River from just below the dam in Oregon to Castle Rock State Park. View the area's many unique St. Peter sandstone rock formations and miles of hardwood forest along one of the most scenic stretches of the Rock River. Must have at least one adult per canoe and no more than three people per canoe. The August 1st trip will be held in conjunction with Oregon Park District.

Where: Meet at Jarrett Center
When: Saturdays,
May 30, June 20,
July 18, & August 1
Time: 8:30 am - 12 noon
Cost: \$10 / person
Ages: 12 and up for paddlers
Min./Max.: 3 / 10 canoes

Register by 5/26, 6/16, 7/14 & 7/28.

Ideas??

Do you have a great idea for a program or a trip destination that you would like for us to offer? Or, do you need a specific badge offered for your scout group? Please let us know by calling Mark at 815-234-8535 x217 or Janet at x232. You could also go to our website, www.byron-forestpreserve.com to email us. We look forward to getting suggestions from you!

programs



Downy Gentian



3D Archery

Practice your archery skills with lifelike targets that include bear, deer, and turkeys. Bring your own equipment or use ours.

Where: Meet at Byron/Oregon Sportsman's Club, Townline Road, South of Byron on Illinois Route 2

When: Wednesdays
June 17, July 15 &
August 19

Time: 5:30 - 7 pm

Cost: \$5 / person

Ages: 10 and up

Min./Max.: 5 / 20

Register by noon on 6/15, 7/13, & 8/17.

Wildflower Walks

Come check out the wide variety of different wildflowers in bloom at the Jarrett Prairie Nature Preserve. Many different flower species will be in bloom each month.

Bring your binoculars and field guides.

Where: Meet at Jarrett Center

When: Saturdays, May 2,
June 6, & August 22

Time: 9 - 10 am

Cost: FREE

Ages: All

Min./Max.: 5 / none

Register by noon on 4/30, 6/4, 8/20.

National Astronomy Day

Check out our three telescopes, make a space-themed craft, and take our astronomy quiz as we view the night sky.

Where: Weiskopf Observatory

When: Saturday, April 25

Time: 4 pm

Cost: FREE

Ages: All

Min./Max.: 5 / 25+

Register by noon on April 23.

Partial Lunar

Eclipse Viewing

Come see a partial lunar eclipse. Stop by for a quick look or hang around for awhile.

Where: Weiskopf Observatory

When: Saturday, April 4

Time: 3:30 - 6:30 am

Cost: FREE

Ages: All

Min./Max.: 5 / 40

Register by noon on April 2.

Birthday Parties

Choose the Forest Preserve to host your child's next birthday party. Several themes are available. Cost includes a two-hour room rental. The Deluxe Party accommodates 12 children (\$30 upcharge for more than 12) and includes program, cake, ice cream, tableware, and a banner. The Standard Party accommodates 12 children (\$5 per additional child) and includes the program only.

Deluxe Party ~ \$75

Deluxe Tea Party ~ \$100

Standard Party ~ \$45

Standard Tea Party ~ \$60

Perseid Meteor Watch

Join us for the most active meteor shower of the year! Bring binoculars or use ours. A blanket or lawn chair may come in handy too!

Where: Weiskopf Observatory

When: Wednesday-Friday

August 12, 13, 14

Time: 9 pm - Midnight

Cost: FREE

Ages: All

Min./Max.: 5 / none

Register by noon on August 11.

programs

Boy Scouts - Geocaching

Geocaching is a worldwide scavenger hunt played using global positioning satellites. We'll learn how to read a map of the local area and how to use a GPS unit. Then, we'll hide some containers for each other for practice and head out to find some of the geocaches on Forest Preserve property. We'll also either send out a trackable travelbug or hide a geocache of our own. This fulfills all but one requirement for the badge--to run a geocaching event--but we can help you plan that, too.

Where:	Meet at Jarrett Center	Ages:	Boy Scouts
When:	Sunday, May 3	Min./Max:	8 / 20
Time:	Noon - 4 pm	Register by April 29.	
Cost:	\$5 / scout		

Cadettes - Trees

Tree fun, science, crafts, connections, and helping trees thrive; you'll have your choices of activities to complete the steps for this badge. Dress for the weather and bring your sense of fun and adventure!

Where:	Meet at Jarrett Center
When:	Sunday, April 12
Time:	3 - 6 pm
Cost:	\$5 / scout (inc. patch)
Ages:	Cadette Girl Scouts
Min./Max.:	8 / 20

Register by April 9.

Jr. Scouts - Drawing

A great time of year to do this badge... we'll take some art supplies outside and draw and paint some of the early flowers. We'll also draw portraits, work with color and lines, and make a portfolio carrier to keep and take home. Dress in clothes that can get messy.

Where:	Meet at Jarrett Center
When:	Sunday, May 2
Time:	Noon - 3 pm
Cost:	\$5 / scout (inc. patch)
Ages:	Junior Girl Scouts
Min./Max.:	8 / 20

Register by April 29.

Brownie Badge - Senses

Use all of your senses as we explore the early springtime prairie so dress for the weather. Lots of crafts and games will fill the requirements for this badge.

Where:	Meet at Jarrett Center
When:	Saturday, March 28
Time:	1 - 3:30 pm
Cost:	\$5 / scout (inc. patch)
Ages:	Brownies
Min./Max.:	8 / 20

Register by March 25.

Brownie Badge - Making Games

Invent your own game and make it! We'll have all the starting materials--game pieces, play money, dice, and blank boards...you'll work together with a friend to make up your rules and how to play. We'll also play some running, tag, and hiding games, go on a scavenger hunt, and finish with a surprise mystery event.

Where:	Meet at Jarrett Center
When:	Saturday, April 11
Time:	12 Noon - 3:30 pm
Cost:	\$5 / scout
Ages:	Brownies
Min./Max.:	8 / 20

Register by April 9.

Homeschool Program

In the Dark...

A special evening program just for home schoolers...we'll start by learning about the kinds of energy that make up what we think of as light, and do some experiments with UV lights, glow in the dark materials, and color. Then, we'll head to our observatory and learn why it gets dark so early in the winter and why we can see stars better when it's cold. We'll have a chance to look through our scope at the night sky too.

Where:	Meet at Jarrett Center
When:	Friday, March 27
Time:	6 - 9 pm
Cost:	\$5 / person
Ages:	6 and up
Min./Max.:	5 / 20

Register by March 18.

Homeschool Program

All That Energy!

Where does our energy come from? Flip a switch--? We'll take a look at our solar panels and wind turbine, spot the cooling towers of the Exelon plant in the distance, and talk about how these energies are different and how they are the same. But that's not all...we'll learn how this is related to food chains and the energy in our bodies. Participants will take observations using various equipment and draw conclusions that relate to real-world things. You'll get to take home projects to continue and use in the sun! Bring a lunch; snacks and drinks will be provided.

Where:	Meet at Jarrett Center
When:	Friday, April 24
Time:	10 am - 2 pm
Cost:	\$5 / person
Ages:	6 and up
Min./Max.:	5 / 20

Register by April 21.

programs



Archaeology Artifacts I.D. Day

Talk to professional archaeologists about your own collection of points, prehistoric tools, fossils, animal bones and other items that you have found and are curious about. If you don't have any items of your own to identify, be sure to stop in anyway to see these artifacts and live demonstrations. Learn more about prehistoric tools and weapons through hands-on demonstrations at this interactive event. Try your hand at using an atlatl spear thrower; instructors from the World Atlatl Association will be on hand to teach the art of throwing spears with atlatls, a type of spear thrower that has been used for over 30,000 years. There will be special ongoing demonstrations of arrowhead and spearhead making techniques by nationally known flintknapper, Larry Kinsella. Larry has been teaching flintknapping for 35 years. He will provide all materials and safety equipment to teach beginning flintknapping, the art of making stone tools from flint.

Where: In & Near Jarrett Center
When: Sunday, July 19
Time: 10 am - 2 pm
Cost: FREE
Ages: All

No registration required.



Fossil Hunt

Join us at the quarry any time; stay for a half hour or the whole time! We'll be digging through the piles before there's any spring growth to see what we can find. Bring a hammer to crack open the bigger ones and a bucket to carry away your finds. Fossil identification and guides provided.

Where: Park at the Land Mgmt Center at 6845 German Church Rd and walk the path to the quarry behind the facility

When: Saturday, April 25
Ages: All
Time: 10 am - 2 pm
Min./Max.: 5 / 20
Cost: \$2/person

Register by April 23.



Heritage Garden Volunteer Day

Our Heritage Farm garden needs your help! In years past, we have had the Master Gardeners, summer camp kids, and volunteers help with our garden. We need a dedicated crew this summer to help us plant and label our heirloom seeds, and to help weed during the summer. Of course, you will be welcome to snag part of the harvest as our produce ripens! All too often, despite our best efforts, tomatoes, beans, and other veggies are left to compost...we'd rather they get eaten! If you're interested in helping out, show up at any time on Saturday and work for a half hour or the whole time...we'll have a calendar where you can sign up for one or more days to weed during the summer and will have more information about harvesting at the end of the summer. We hope to see you there!

Where: Heritage Farm
When: Saturday, May 23
Ages: All
Time: 10 am - 2 pm
Min./Max.: 3 / 12
Cost: Free

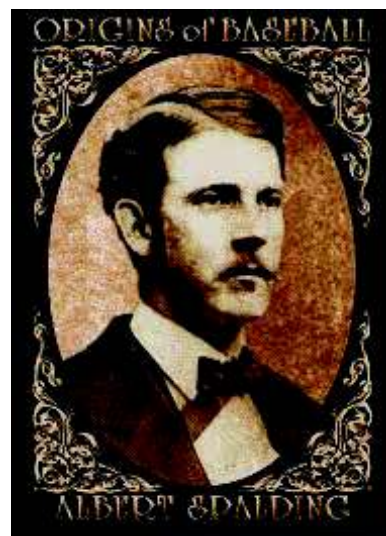
Register by noon on May 20.

Connect with us!



Register online at www.byronforestpreserve.com

programs



Albert Goodwill Spalding's 165th Birthday Celebration and the Rise of Base Ball at the End of the Civil War

Sunday, August 2nd ~ 2pm ~ Jarrett Prairie Center

Albert Goodwill Spalding was born in Byron, Illinois on August 2, 1850. He moved to Rockford when he was a teenager and began his famous base ball career (baseball was two words then). After starring with the Forest City Club of Rockford, he led the Boston Red Stockings (now the Atlanta Braves) and the Chicago White Stockings (now the Chicago Cubs) to world championships, became the first 200-game winning pitcher in professional baseball and founded the Spalding Sporting Goods Company which made him a millionaire...and it all started right here in Byron, Illinois.

Join Bruce Allardice, an expert in the history of early baseball for a look at what baseball was like in our area 150 years ago at the end of the Civil War. Baseball was labeled the "national pastime" even before Fort Sumter. Civil War soldiers spent more time playing baseball

than they did fighting battles. Professor Allardice takes a sometimes serious, sometimes humorous look at baseball of the time and how it was played during and just after the war. He'll show that the war destroyed most existing teams, but helped spread the game across the nation. Albert Spalding began pitching semi-pro in 1865 at the age of 15 just as the war ended. After the soldiers returned home from the war, the popularity of the game exploded nationwide and Spalding became the best known player of his generation.

Bruce Allardice is past president of the Northern Illinois Civil War Round Table and the Civil War Round Table of Chicago. A Board Member of the Illinois State Historical Society, Professor Allardice has presented numerous lectures and presentations on the Civil War and genealogy for museums and civic organizations. An avid sports historian, he currently heads up the

"Civil War Baseball" subcommittee for the Society for American Baseball Research where he specializes in researching the lives of 19th century ballplayers.

This program will start with an hour long program at the Jarrett Prairie Center and we will then proceed over the bridge to the Byron Museum of History at 110 Union Street in Byron for cake and refreshments and to view the Albert Goodwill Spalding exhibit to learn more about his life.

This program is co-sponsored by the Byron Museum of History. There is no admission fee and advance registration is not required. Call 815 234-8535 for more information.



preschool programs



Mrs. Crystal



Mrs. Joni



Mrs. Tara

We are proud to offer one of the best preschool education programs and facility in the area. The program is housed in the Keller Education Center, a Leadership in Environmental Design (LEED) Platinum Certified Building. It is located adjacent from the Jarrett Prairie Center at 7993 North River Road in Byron. The Keller Education Center is one of only three platinum LEED certified education buildings in Illinois. The building is also the first and only platinum LEED certified building in Ogle County.

Get your children ready for kindergarten by enrolling them in our structured preschool classes. The Tuesday/Thursday classes are geared toward 3-year-olds and younger 4-year-olds. The Monday/Wednesday/Friday classes are geared toward older 4-year-olds and younger 5-year-olds. Children must be at least 4 years old to attend the three-day class. They must be at least 3 years old to attend the two-day class. Children must be potty trained. Immunization records are required. You may register your child at anytime throughout the year if your child's birthday is later in the year. Please call 815-234-8535 ext. 200 for more information. First day of school will be August 24 for M/W/F students and August 25 for Tu/Th students.

Where: Keller Education Center
Ages: 3-5 years old
When: Mon/Wed/Fri or Tues/Thurs
Time: 8:30-11 am or 12:30-3 pm
Min/Max: 6/25-M/W/F morning & afternoon
6/18-TU/TH morning & afternoon
Cost: \$110/month-M/W/F
\$90/month-Tu/Th

Registration is ongoing throughout the year.

Meet the Teachers / Open House
Thursday, August 20 ~ 5:30-7 pm

Check us out on Facebook and our website at www.byronpreschool.com!

10 Connect with us!



Register online at www.byronforestpreserve.com

11

Adventure Club

Even though it's summer, the pre-school fun and learning doesn't have to end! Sign up your 3-6 year old for some fun in the sun at the Forrest Preserve. We meet two days per week from 9-11 am. Sign up for one or all eight sessions. The sessions will promote socialization and structured learning activities at the Keller Education Center, the playground, and the prairie and woodlands of the Jarrett Prairie Preserve. Join Mrs. Joni and Mrs. Crystal for a great summer!

Where: Keller Education Center
(near Jarrett Center)

When: Monday/Wednesday or
Tuesday/Thursday
Session #1 - June 1-4
Session #2 - June 8-11
Session #3 - June 15-18
Session #4 - June 22-25
Session #5 - June 29-July 2
Session #6 - July 6-9
Session #7 - July 13-16
Session #8 - July 20-23

Time: 9 - 11 am
Cost: \$20 / child / session
Ages: 3 - 6 years old
Min/max: 6 / 16

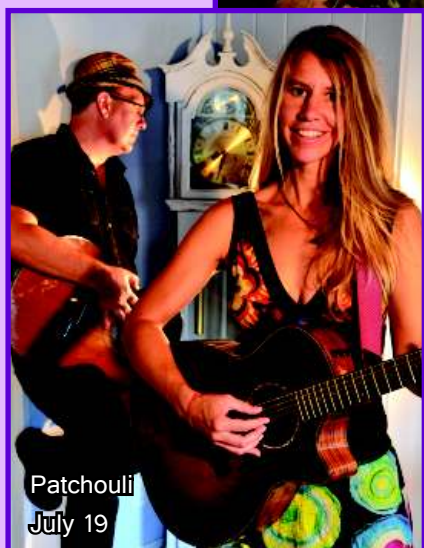
**Register and pay by the Thursday
before each session begins.**

summer concerts

Local Performer Comes Home...



Enjoy local singer song writer Dan Hagemann. Nashville-based singer/songwriter Dan Hagemann was born and raised among the corn fields of Ogle County, IL, so playing at the Byron Forest Preserve District's Concert In The Park is a chance to come home. He will be performing with piano and saxophone player and old friend Matt Martino. After meeting him at Southern Illinois University at Carbondale in 1998, Dan rejoined Matt in Nashville in 2005 to hone their songwriting and performing chops together. Although they've steadily continued to co-write songs, this will be one of their first public performances together since 2012. Dan's songwriting style was heavily influenced by some of the greatest Americana, rock and folk songwriters such as Willie Nelson, Bruce Springsteen and James Taylor. In September of 2014, Dan released his second album, "Life-Support Lullabies." To hear his songs, go to www.danhagemann.com and click on the "Music" tab.



Concerts are held on Sundays at 7pm at the Heritage Farm Stage located at 8059 North River Road, Byron.

Sponsored by:



(see ad on back cover)

land management

Second Trail Added to Prairie State Hike App

The Byron Forest Preserve District has added a second trail to the Prairie State Conservation Coalition's Prairie State Hike App. There are now two trails at the Jarrett Prairie Nature Preserve that you can access for a guided tour through your smart phone. This 99-cent smart phone app will guide you through trails located in the Byron Forest Preserve District, the Nature Conservancy's Nachusa Grasslands, and many other prairie preserves and land conservation areas located throughout Illinois. The Prairie State Hike App uses text, audio, photographs and video to describe and explain the many plants, flowers, trees, wildlife and landscapes that you may encounter on your trail hikes.

Take advantage of our latest educational tool that offers you the ability to access great hi-tech interpretive experiences at multiple outdoor locations through your smart phone.

Special thanks to My Rock River Radio's River Country 101.7 and KOOL FM 95.7 for their help in providing the audio portion of our trail hikes.



New Face in the Restoration Dept.

My name is Lauren Marks and I am the new Restoration Technician at the Byron Forest Preserve District. I am from Oregon, Illinois, where I graduated from Oregon High School in December 2010. I began my college education at Rock Valley College and transferred to Lake Forest College in January 2012. I graduated from Lake Forest College in 2014 with a Bachelor of Arts in Environmental Studies and a Bachelor of Arts in Finance.



I began my experience with ecological restoration in the fall of 2012 as part of my Environmental Studies courses with a ravine restoration project that Professor Glenn Adelson, Associate Professor and Chair of Environmental Studies at Lake Forest College, began on Lake Forest College's campus. The purpose of this project is to remove non-native species and replace them with native species in order to reestablish the natural environment and to prevent erosion. I continued to volunteer with this project until I graduated in the spring of 2014. I continued to gain my experience with ecological restoration by working as a seasonal crewmember for the Byron Forest Preserve District in the summer of 2014. These experiences ultimately lead to my current position as Restoration Technician. I am excited to be working at the Byron Forest Preserve District and I am looking forward to seeing our achievements regarding ecological restoration over time.

Some of my hobbies include hiking, swimming, reading, volunteering, baking, and just being outdoors. I also love to spend time with my family!

I am thrilled to be a part of the Byron Forest Preserve District and I look forward to serving your community.

Connect with us!



Register online at www.byronforestpreserve.com 13



Prairie Preserve Notes

By Russell Brunner
Superintendent of Land Management

Get Out on the Trails!

The District works to preserve open space and to restore and manage our preserves for the large diversity of plants and animals that live in our area, but we also strive to make these preserves accessible to the public to enjoy nature right here in the Byron area. The District offers more than 25 miles of maintained trails for public use at five preserves. The trails are open for passive recreation including hiking, running, bird watching, and cross country skiing. A couple preserves offer additional trail uses as well, keep reading for the details.

Jarrett Prairie Preserve offers over seven miles of scenic trails that lead through open prairies and oak woodlands. There are a number of trailheads, three begin up at the Jarrett Prairie Center, two begin just off of the north shelter parking lot, and one trail is accessible from the golf maintenance parking lot. All these trails are within the Jarrett Prairie Nature Preserve. A registered Illinois Nature Preserve is a land protection status through the state of Illinois that gives a parcel of land the highest level of protection possible. It protects it in its current state as a natural area into perpetuity and cannot be developed. The Jarrett Prairie is designated as Illinois Nature Preserve to protect the rare and high quality plant communities and animals that call it home. A trail now leads from the Jarrett Prairie through a narrow corridor past the Wilson Shelter to the Stephen J. and Deirdre Nardi Preserve. This connecting trail allows a hiker to take a ten mile hike or longer if they desire.

Stephen J. & Deirdre Nardi Equine Prairie Preserve is located just south of the Jarrett Prairie on River road. This preserve protects more than 500 acres of sand prairie, dolomite prairie, and oak woodlands. In addition to the previous passive trail uses, this preserve allows for horse riding on all of its trails. The parking area is large and allows for several trucks with trailers. There is also water available in the parking lot. This preserve offers more than 11 miles of maintained trails that wind through remnant and restored prairies and through the south woods. Cross country skiing is also open to the public at this preserve.

land management

HeLeo Two Rivers Preserve is newly expanded and restored and offers river front, fishing opportunities, boat docks, sand volleyball, open park area, a shelter, and a new trail (close to a 1 mile loop) that follows the banks of the Rock and Leaf Rivers. A trail through the oak woodlands is under development and is planned to be ready for use later this summer.

Howard Colman Hall Creek Preserve offers over 5 miles of very scenic hiking trails that traverse some moderate terrain through prairie plantings and restored oak/hickory woodlands. The Hall Creek divides this preserve in half. There is a bridge that crosses the winding clear stream in the northwest corner of the preserve. There is a second water crossing (very shallow water) for those willing in the center of the preserve. The preserve parking area is located off of Weldon Road north of McGregor Road. Additional trails will be added in the next few years as additional prairie plantings are completed as well.

Etnyre/Ripplinger/Gouker Preserve offers a 2.5 mile loop trail that goes through the Ripplinger-Gouker prairie and oak savanna and a shaded wooded trail through the forested Etnyre unit. This preserve allows for leashed dog use. Please obey the leash law and clean up after your pet. Rules are posted in the parking lot off of Townline Road. There is a small shelter at the top of the hill that provides shade, picnic tables, and a great view of the preserve.

Don Hamer Recreation Path is a paved trail that begins in Byron at Sunshine Park, follows the river, crosses the Rock River bridge, runs alongside the Forest Preserve road, and ends at the Jarrett Prairie Center. The path is a little over 1.5 miles in one direction so provides a 3+ mile loop from town to the Jarrett Center and back. This recreation path is also a place to walk a dog on a leash.

With over 25 miles of nature trails at five different preserves, we hope you will come out and enjoy one or several of them this year. Trails are open year round, from wintertime cross country skiing or snowshoeing to summer wildflower hikes and birdwatching, there is always something to see and enjoy in nature.

"In every walk with nature, one receives far more than he seeks." - John Muir



land management



Butcherbird / Northern Shrike (*Lanius excubitor*)



By Austin Webb
Asst. Supt. of Restoration

In the middle 15th century in Eastern Europe, Vlad III, the Voivode (Lord) of Wallachia, was responsible for the protection and wellbeing of the Romanian people living on either side of the Danube River. Under constant scrutiny from the Ottoman Empire, Vlad resisted their incessant demand of taxation, and as his reign grew, Turkey sought to strike Vlad down. A war broke out, in which Vlad was initially able to defend his homeland from invasion by defeating his enemies and having them impaled on wooden stakes. This gruesome practice intimidated the superior Turkish forces, and although victory was short-lived, Vlad's posthumous name "Vlad the Impaler" has endured history. In fact to this day, the very behavior which made Vlad famous endures as a quintessential survival mechanism used by one member of our resident wildlife community.

The great grey shrike or northern shrike is scientifically referred to as *Lanius excubitor*, which translated means "sentinel butcher", and thus the shrike is also commonly referred to as the butcherbird. The northern shrike is a medium-sized songbird (wingspan 12-14") with similar males and females, having a gray back and wings, black mask, black on the wings and on top of the tail, and having white under the tail with a white underbelly. Due

to its appearance, the northern shrike could be confused with the northern mockingbird, but the stout head and body of the shrike, among other factors, help to distinguish it. The shrike prefers open grassland habitat with interspersed shrubs, and spends its summers in the Northern U.S., Canada, and Alaska, migrating to more temperate climates in the winter.

The shrike received the name butcherbird for its unique and peculiar method of feeding. A shrike will perch atop a shrub, surveying its surroundings for prey, which may include anything from beetles to bumblebees, small rodents and amphibians, or even small songbirds such as sparrows or chickadees. Once a worthy meal is chosen, the shrike will ambush it from above, using its strong, curved beak to crush the back of its head while grappling the victim in its talons. It then airlifts its prize to the nearest hawthorn tree or barbed-wire fence to be impaled. By using the spines of a thorny tree or fence to hold its meal in place, the shrike can feed with greater ease. The impalement of its prey is also used to cache meals and to mark territorial boundaries. A shy species, often times the actual birds go unnoticed, however, the definitive presence of a shrike can be detected given their unmistakable and unforgettable handy work.

land management

Red Headed Woodpecker

(*Melanerpes erythrocephalus*)

Habitat restoration is making a difference for this threatened bird

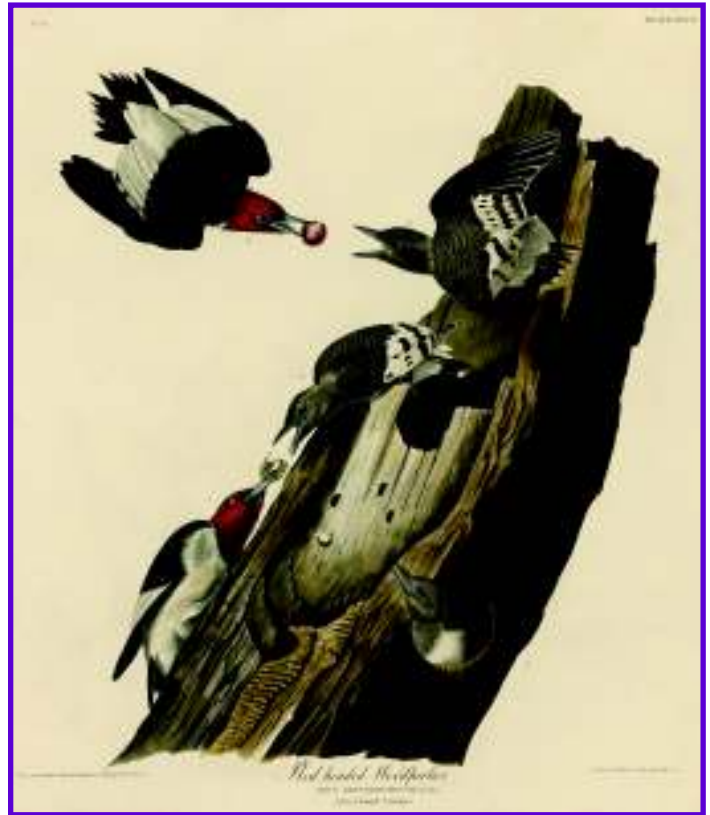


By Mark Herman
Superintendent of Education

The efforts of cutting down and clearing out of invasive trees and shrubs in mature woodlands and oak savannas by our restoration crew are helping to make this threatened woodpecker thrive in several of our Byron Forest Preserve District nature preserves.

Since the late 1960's, the once common red headed woodpecker population in the United States has declined by over 50% and they are now on the threatened species list. In northern Illinois over the past 50 years, the native oak-hickory forest landscapes have been heavily altered by the activities of humans. Few large standing dead trees remain for woodpeckers to make holes in to nest. Most open oak savannas have been cut down or overgrown with invasive species and become thickets of box elder, hackberry, black cherry, Chinese elm, Eurasian buckthorn and Japanese honeysuckle. There are now fewer young oak and hickory trees available to replace the larger older trees. With the changes to the woodlands ecosystem also come changes to the number and type of birds and other animals that live there.

Fossil evidence has shown that red headed woodpeckers have lived in Illinois for over two million years. These striking red, white and black birds are less likely to drill into trees to find their food like most woodpeckers. They are omnivores that eat acorns, nuts and berries along with beetles, cicadas, dragonflies, bees, grasshoppers, mice and will sometimes raid other birds' nests for eggs. The red headed woodpecker favors open mature woods with clearings where it can hunt for food by swooping down and catching insects in midair. They are one of the few species of woodpecker that will store their food in cracks and under the bark of trees to be eaten at a later time.



Red Headed Woodpecker (plate 27) from John James Audubon's Birds of America circa 1827.

Male and female red headed woodpeckers are the same size and have identical color markings. Their immature young have dusky-brown heads and backs with a distinctive white rump just like their parents. These woodpeckers prefer open woodlands, oak savannas and mature oak-hickory woodlands with clearings as breeding habitat. They will dig a cavity in a bare dead tree or large tree limb usually up to 80 to 100 feet from the forest floor to make their nests. The female lays three to ten eggs and will have one to two broods each summer.

Red headed woodpeckers are now regularly seen at the Byron Forest Preserve District's Jarrett Prairie Nature Preserve, Nardi Equine Prairie Preserve, He-Leo Two Rivers Preserve and Howard Colman Hall Creek Preserve thanks largely to the efforts of our Restoration Department who are returning wooded areas to how they would have looked prior to European settlement.

Please join us on our woodpecker walks scheduled for Saturdays at 7am, April 18th, June 13th, and July 11th. Call 815-234-8535 x200 to register

Connect with us!



Register online at www.byronforestpreserve.com 17



By Mark Herman
Superintendent of Education

Whether you love them or hate them, the thirteen-lined ground squirrels will soon be waking from their four-month, below-ground hibernation to begin their once-a-year breeding cycle. These original prairie mammals are also known as gophers, strippers, squinneys and grinnys. They are four and a half to six and a half inch long members of the squirrel family most closely related to chipmunks and tree squirrels. True gophers (see photo below right) are a western animal that look and act nothing like our ground squirrels.

Thirteen-lined ground squirrels are an example of a prairie species that have successfully adapted to living close to people and have greatly expanded their range over the past two hundred years. They prefer living in grassy areas that are occasionally mowed such as golf courses, parks, roadsides, cemeteries, airports and lawns where they can make a variety of tunnels 15 to 20 feet long and from one to two feet deep. Ground squirrels have a home range of up to two to three acres. Each May, a female ground squirrel will have anywhere from three to fourteen adorable babies.

Thirteen-lined ground squirrels are an important part of our prairie ecosystem and food web. They benefit people by eating weed seeds, grass, beetles, caterpillars, grasshoppers, crickets and other crop damaging insects. Their active digging behaviors improve soil conditions by fertilization with their scat and aerating soil with their tunnels. They distrib-



**Thirteen-Lined
Ground Squirrel**
(*Spermophilus tridecemlineatus*)

Ground Squirrel Photos by Gary Gullett, Adventure Safari Network

ute prairie seeds and serve as an important food source for many local predators that include hawks, weasels, badgers, foxes, coyotes, snakes and outdoor domestic cats.

Even though thirteen-lined ground squirrels spend most of their life below ground and are known for their obnoxious digging behaviors, they still provide us with hours of enjoyable opportunities during the spring and summer to view them with family and friends as they scurry (at speeds up to 8 miles an hour) across our manicured lawns.



Western pocket gopher
(*Thomomys mazama*)



prairieview golf club



Meet Your New Golf Pro Staff



Andy Gramer, PGA Head Golf Professional

We are excited to have Andy Gramer as our PGA Head Golf Professional going into the 2015 golf season. Andy Gramer is a Class A PGA Professional with the PGA of America. His experience includes seven years as the First Assistant Golf Professional at the renowned Desert Highlands Golf Club in Scottsdale Arizona, and two years as the Head Golf Professional at Silver Ridge Golf Course in Oregon, IL. A Midwest boy at heart, he was born in Duluth, Minnesota and raised in Byron. He caught the golf bug from his grandfather who was a member of the grounds crew at Ironwood Golf Course in Highland, Michigan. He ventured to Arizona after graduating from Byron High School to focus on his love for the game of golf. It was there he met his wife, Jill, and his two sons, Benjamin (6) and Nicholas (4), were born. He moved back to Byron two years ago to be closer to family and also so that his kids could receive a superior education. The newest addition to his family is Katherine who is one year old. He is very excited about his new position and looks forward to sharing his passion for the game of golf with his hometown and the golfers of PrairieView Golf Club.

Tyler Weik Assistant Professional

We are also excited to have Tyler Weik as our Assistant Golf Professional. Tyler recently began his apprenticeship in the PGA/PGM in 2013. He was born and raised in Freeport, IL to parents Jim & Roxi Weik. He has one sister (Jennifer Smith-Norman, 43, Freeport) and one brother (Matt, 26, Freeport). Tyler found his love for the game of golf early in his childhood while tagging along with his father at Park Hills GC in Freeport. While attending Freeport High School, he joined the golf team as a freshman and played for the varsity team in his junior and senior years, earning MVP honors of the varsity team in his senior year. He earned a golf scholarship to Highland Community College in 2003. He helped the team win the Region IV golf tournament at PrairieView GC to qualify them for the NJCAA Division II golf tournament at Palm Valley GC in Phoenix, AZ. Tyler has worked as an assistant golf professional at Freeport Country Club (2006-2012) and Lake Carroll GC (2013-2014) over the past 8 years. He also served as the Men's Head Golf Coach at Highland Community College from 2011-2014. Tyler is very excited to join the staff at PrairieView GC and he looks forward to meeting you all as the 2015 golf season gets underway.

prairieview golf club

PrairieView Golf Club Offering More than Ever

By Andy Gramer, PGA Head Golf Professional

It's that time of the year where winter has dragged on long enough and we are all itching to get out and play a round of golf. As the new Head Golf Professional at the PrairieView Club, I can assure you that we have been hard at work preparing for the 2015 golf season. I'm incredibly fortunate to be back in my hometown and can't wait to get out and play a round of golf with you this summer. It's an exciting time to be at PrairieView Golf Club, with this year promising to take our 18-hole championship golf course and the Byron Forest Preserve District (BFPD) to new heights. I'm privileged to be working with an organization such as the Byron Forest Preserve District. Together, this amazing team and I will provide an exciting and successful year for the PrairieView Golf Club. Although I've worked and played at courses across the country, it turns out the grass is just as green right here at home.

Remodeled Pro Shop

The design of the existing pro-shop has been reconfigured to provide an inviting customer-experience. The increased visibility makes it easier for our staff to greet visitors and creates a welcoming environment. The north and west facing windows now offer a panoramic view that overlooks the course and will whet your appetite for a round of golf.

More Programs

We will be offering more programs than ever before, with increased opportunities for both social and competitive golfers. For couples and families, PrairieView will host several Couple's Nights, with entertainment for the kids on our brand new 20' outdoor movie theater system. In August, we will be hosting our "Patriot Golf Day," complete with a 30-minute ceremony to honor our veterans and a 21-gun salute and aerial flyover. If you're looking for a little competition to test your golf skills, we invite you to participate in the Gold Medal Classic, Spring and Fall Ultimate, New ByronFest event, and Club Championships for men, women, juniors and couples.

Upgraded Equipment

Our Golf Digest four star-rated golf course will have more to offer than ever before. Brand new this year, PrairieView will have a fleet of 80 electric-powered golf carts equipped with Visage GPS Systems. In addition to offering a quieter, more economically friendly ride, the cart's GPS system will be able to pin point yardage distance to the hole and provide a hole "fly over", allowing the golfer to see the hole before it's played. The carts also keep your score and email your score card to you at the end of your round. Finally, players will be able to use the golf carts to communicate with the Pro Shop, and can even pre-order food for pickup from The Prairie Grass Pub.

Enhanced Food and Beverage

The Prairie Grass Pub will offer brand new menu items, and for the very first time, a kids menu. Additionally, the bar has a brand new jukebox and the 1,200-square-foot deck will feature upgraded outdoor furniture and outdoor speakers for music. Also new for 2015, VIP Vouchers will offer food & beverage discounts.

PGA Jr. League

2015 will be the first year that PrairieView will participate in the PGA Jr. League, offering a fun and social opportunity for both boys and girls ages 13 and under to get involved in golf and play in matches against other teams.

Instructional Opportunities

In addition to more social and competitive programs, we will offer several instructional opportunities, such as "Adult Beginner Golf Boot Camp," a basic introduction to golf, rules and etiquette. We will host a "Scoring Clinic 2.0" that includes a free wedge with participation, and "Golf Demo Days," an opportunity for patrons to try out the latest and greatest equipment. We will utilize the V1 digital coaching system, a software program that allows us to capture, compare and improve performance and provide personalized tips to improve your game. Finally, video golf tips will be recorded and sent out through e-blasts. To register to receive video golf tips and other info, sign up at www.prairieviewgolf.com.

pvgc instruction

Titleist Fitting Center



Golf is all about confidence, in your game and your equipment. That's why Titleist designs the highest performing equipment and offers the most precise club fitting experience in the game. Titleist's approach to fitting begins with a unique understanding of players' performance needs born from working with PGA Tour players, PGA Professionals and amateurs serious about getting better. PrairieView Golf Club is recognized as an official Titleist Fitting Center and will help players optimize driver performance, make iron play more precise, dial in their wedges and fine-tune set compositions. We will host a Titleist Demo Day from 2-6pm on Friday, May 15th located at the driving range. Swing on by and test out the latest and greatest golf equipment. We will be offering special discounted demo day prices.

Private Instruction

Whether you are new to golf or looking to take your game to the next level, the professional teaching staff at PrairieView will help you accomplish your goals. Our staff has the ability to teach any level of player, from beginner to accomplished, and for all facets of the game. We will utilize the V1 Digital Coaching System that will allow us to capture your swing on video and provide immediate visual feedback to dramatically improve your learning performance. Following your one-on-one lesson, we will email you your recorded golf swing along with personalized tips to improve your game. We offer adult (18 and older) lessons at half-hour (\$25), one-hour (\$50), or a discounted lesson package of buy four lessons, get the fifth one free. Lessons offered to juniors (17 and under), half-hour (\$15) and one-hour (\$30). To schedule a private lesson with our teaching staff, call the golf shop at 815-234-4653.



Scoring Clinic 2.0

Learn the secrets of scoring from 125 yards and in. The Scoring Clinic takes a unique approach to improving scores, combining valuable wedge education with short-game instruction by PGA Head Professional Andy Gramer. You will learn the basics of wedge fitting and how to properly select the right wedges for your game. Once you better understand how the equipment works, you will know how to use each club more effectively. It's a recipe for short-game success that we've seen work time and again, for every type of player. All attendees will receive a Cleveland 588 RTX wedge, as well. The Scoring Clinic will be held on Saturday, June 6th, from 3-5pm. The cost is \$145 (includes new Cleveland RTX wedge).

Adult Beginner Golf Boot Camp

Our one-day adult Boot Camp is designed and geared towards teaching new and beginning golfers. Participants will learn the full swing, short game, rules and etiquette. These fun and interactive group lessons will take place on the driving range and also include on-course instruction. All lessons will be taught by PGA Head Professional Andy Gramer. The cost is \$30 per two-hour session or sign up with a friend and it will only cost \$25 each. Contact the golf shop at 815-234-4653 to register. Boot Camps will be held on Saturday, April 25th, 1-3pm; Sunday, May 3rd, 1-3pm; Saturday, May 16th, 2-4pm; Sunday, May 31st, 1-3pm; Saturday, June 13th, 2-4pm; Saturday, July 18th, 2-4pm.

Chip and Sip

We are excited to offer this unique golf clinic that will focus on your short game paired with a drink of your choice. What better way to work on your short game than with a drink in hand. This one-hour clinic will provide a low-stress atmosphere to learn how to take your short game to the next level. The clinic will be held on Saturday, May 30th, 4-5pm. The cost is \$20 per person and you must be 21 or older to participate. To register for this event contact the golf shop at 815-234-4653.

Connect with us!



Register online at www.byronforestpreserve.com

pvgc juniors

PGA Junior League

The PGA Junior League is aimed at presenting golf in a fun and social environment for boys and girls, ages 13 and under (cannot be 14 years old prior to August 1st. No prior playing experience is needed, teams are co-ed and every participant gets a chance to play. Similar to other youth recreational sports, PGA JLG encourages and relies on parental involvement. In addition to making sure participants get to matches and practices, parents can play an important role in the success of their team.



Each competition is team vs. team format consisting of four 9-hole matches. The format for each match is a two-player scramble, divided into three 3-hole segments called "Flags". Each "Flag" is worth one point, and alternates are allowed to sub in at the beginning of each new "Flag" (Holes 4 and 7). It is also required that every junior play at least one "Flag."

This new league is a great opportunity to get your child involved in golf. Visit prairieviewgolf.com for registration forms or contact the pro shop regarding any questions

The cost is \$125 which includes: Team Jersey, Golf Balls, PGA JLG Bag Tag, One Junior Developmental Session (\$65 value), Six Regular Season League Competitions, Instruction from a PGA Professional, Team Practices, and Awards.

Ogle County Junior Open



PrairieView will host the Ogle County Junior Open on Thursday, July 16th. This event is open to all boys and girls age 7-18. The cost is \$25 and includes lunch and prizes for winners in each age category. The age groups are 7-9 (9 holes), 10-12 (9 holes), 13-15 (18 holes) and 16-18 (18 holes). The registration deadline is Monday July 13th. Registration forms can be found at www.prairieviewgolf.com or call the golf shop at 815-234-4653 for more information.

Junior Summer Competitive League

The Junior Golf Summer Competitive League is designed for kids entering middle school through high school (ages 12-18) to experience golf in a competitive team atmosphere. Junior golfers must have previous experience on the golf course and have the ability to play golf with minimal supervision. Juniors who have not been on the course or don't have the ability to play 9 holes are encouraged to register for the junior developmental lessons. The league cost is \$80 (\$25 for juniors with season golf passes) and includes a team shirt, prizes, and free golf after 7pm throughout the summer. The season will kick-off on June 9th and runs through August 4th. The league will be played every Tuesday morning from 9am-12pm. To register, call the golf shop at 815-234-4653.

Junior Rental Club Program

PrairieView will unveil a new Junior Rental Club Program for the 2015 golf season. This unique program will allow you to rent a junior set for the entire summer. It is important that juniors have the proper size golf clubs made specifically for juniors. These clubs have heads, shafts and grips that are properly weighted and sized for each age group. Lightweight, properly fitted clubs gives a young golfer the best opportunity for success and enjoyment. Contact the golf shop at 815-234-4653 for more information on this new program.

Junior Developmental Lessons

Junior developmental lessons are designed for boys and girls age 5-17. These introductory group lessons are targeted towards beginning and intermediate golfers. Lessons will cover all facets of the game including full swing, short game, rules, and etiquette. Juniors will also receive on-course experience. Golf clubs will be provided for students who need them. We will be offering 12 sessions throughout the summer. Each session will comprise of six group lessons that are one-hour in length. For a list of upcoming sessions visit www.prairieviewgolf.com or call the golf shop at 815-234-4653 for details. The cost per session is \$65 per junior.

pvgc juniors

Winter Junior Golf Day Big Success!!

The Inaugural Winter Golf Day was held on March 1st, 2015 and hosted in the PrairieView Turf Care Center. This unique event provided local junior golfers the opportunity to gear up for the golf season all at no cost. In our first year, we had a great turnout with 84 juniors and 56 parents in attendance. The day's activities included a complimentary lunch, games, raffle prizes, movie, and indoor practice areas. Juniors were able to work on their swings or roll some putts while staying warm indoors.

The Byron Forest Preserve and the staff at PrairieView are dedicated to the continued growth of the game of golf. The junior golfer is the future of the game and we will continue to provide educational and player developmental opportunities. If your child is interested in golf, we offer instructional clinics, junior leagues and tournament play throughout the summer.

Please feel free to contact the professional staff at PrairieView if you are interested in introducing your child to this wonderful game. We would like thank all the parents and juniors who attended our inaugural event and we look forward to seeing you at the course this summer!



pvgc tournaments

Gold Medal Classic

Your competitive juices better be flowing when you sign up for this event! This scratch (no handicap) tournament is like no other! The 24th Annual Gold Medal Classic will be hosted at PrairieView Golf Club on Saturday and Sunday, August 15th and 16th. There will be three divisions offered: Men, Senior (55+) and Ladies. Flights will be determined following the first round. Tee times will begin each day at 7:30am. Each participant will be allowed to choose one playing partner of their liking for Saturday's round. Sunday tee times will be determined by Saturday's scoring with the lowest scores teeing off last. The cost for the event will be \$95 (\$65 for pass holders) and will include two rounds of green fees, prizes, range balls and a tee gift. Defending Champions include: Robert Dofflemyer (Men's Champion), Rick Anderson (Senior Champion) and Cynthia Bounletay (Women's Champion). Other flight winners for 2014 include: Brian Silvers (1st flight) and Chris Woods (2nd flight). Registration deadline is 5:00pm on Thursday, August 13th. Registration forms are available at www.prairieviewgolf.com. For more information on the Gold Medal Classic, please contact Andy Gramer at andy@prairieviewgolf.com or by calling the pro shop at 815-234-4653.



2014 Gold Medal Classic 1st Flight Winner Brian Silvers with his son, Jon.

ByronFest Open

Save the date for the first annual ByronFest Open scheduled for Saturday, July 11th. Start your ByronFest off right with a round of golf at PrairieView. This fun and social event will feature a 4-person scramble format with a 9am shotgun start. The cost of the event is \$50 per person (\$30 pass holders and \$20 for All Inclusive pass holders) and includes golf w/cart, lunch and prizes. The deadline to register is Thursday, July 9th. Contact the golf shop at 815-234-4653 to book your foursome for this year's inaugural event.



The Spring Ultimate

This competitive two person team event is scheduled for Sunday, May 17th. Teams will battle it out over 27 holes while competing in a 9-hole scramble, 9-hole best ball and 9 holes of alternate shot. This unique event is sure to test your golf skills and patience. The cost is \$85 per person (\$60 for pass holders) and includes 27 holes of golf w/cart, dinner, drinks and prizes. The deadline to register for this event is Thursday, May 14th. For more information, visit our website at www.prairieviewgolf.com or to register, please call the PrairieView golf shop at 815-234-4653.

Match Play Championship

Are you looking for another form of competition other than traditional stroke play? Then the match play championship is for you. This season-long tournament will test your resolve in this head-to-head format. New for 2015 will be the ladies division. The match play championship will be played at full handicap and seated by handicap at the time of the sign up deadline. Sign up deadline is June 13th and brackets will be posted on June 16th.

pvgc tournaments

Patriot Golf Day



The staff at PrairieView is excited to host the 3rd Annual Patriot Golf Day. This annual event is scheduled for Saturday, August 29th with an 8am start. This event will play tribute to the dedicated men and women of the armed forces. The event will kick off with a 30-minute

salute to our fallen soldiers that will include a Full Color Guard, 21 gun salute, and an aerial display. The format for this event is a 4-person scramble. The cost is \$50 per person (\$30 pass holders and \$20 for All Inclusive pass holders) and includes golf w/cart, lunch and prizes. The deadline to register is Thursday, August 27th. Contact the golf shop at 815-234-4653 and book your foursome to pay tribute to our armed forces.

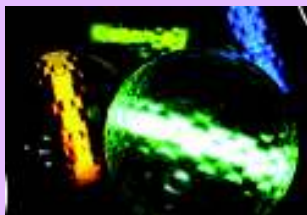


Ladies Rock River Classic

We are proud to be the home of the 2014 Ladies Rock River Classic Champions. Last year, was the first ever championship for PrairieView and the team pictured here consisted of (L-R) Dawn Smith, Char Morris, Elizabeth Curtiss, Deb Clark, Shelly Barkei, and Laura Medlar. Our PrairieView Ladies will look to repeat at this year's Rock River Classic and keep the trophy right here at home. If you are interested in qualifying for the 2015 team, please contact the golf shop at 815-234-4653 for more information.

Night Golf

Maybe some people should play golf in the dark!! With our new Night Golf events scheduled for this season, you will have the opportunity to do just that. We have two events set for the 2015 season so get your team together, grab your flashlights and come on out to PrairieView GC on Friday, June 26th and Saturday, July 25th. The theme for the July 25th event will be... wait for it... Caddyshack!! Put on your Carl Spackler bucket hat or your Al Czervik plaid pants and join us. Each event will be a 9-hole scramble format and will start at dusk or roughly around 9pm. The cost will be \$35 per person (\$25 for pass holders) and will include golf w/cart, accessories (glow balls, glow sticks, etc.) and prizes. Registration deadlines will be Tuesday, June 23rd and Wednesday, July 22nd. For more information, please visit prairieviewgolf.com or by calling the pro shop at 815-234-4653.



Spring Fling

After a long, harsh winter what better way to kick the rust off your game than with a casual and relaxed 4-person scramble event? That is exactly what the inaugural Spring Fling is intended to do! Get your 3 best golfing friends together and join us on Saturday, May 9th for this laid back event. The event will begin with an 8:30am shotgun start. The cost is \$35 per person (\$20 for pass holders and \$10 for All Inclusive pass holders) and includes golf w/cart, lunch and prizes. The deadline to register for this event is Thursday, May 7th. Registration forms can be found at www.prairieviewgolf.com. Call the pro shop at 815-234-4653 for more information.

pvgc turf notes



Matt Henkel
Golf Course Supt.

Grounds Crew up to the Challenge in Tough Golf Market

There are two things about golf in 2015 that I know to be true: the demand for quality playing conditions still exists and the challenge to provide those conditions despite declining participation becomes more difficult as the trend continues. However, this article isn't about the doom and gloom outlook many have in the golf industry. There is no doubt that the golf market is flooded and the supply of courses far outpaces the current demand. The market has begun to stabilize itself, as evidenced by more course closings each year than openings. During these challenging times, courses really only have two choices. Unfortunately, many choose to stick to the status quo and simply hope to still be in the ballgame when the market corrects itself. The other option is to adapt and survive. Luckily for me, I am fortunate to work alongside a talented and dedicated grounds crew that is up to the challenge of putting PrairieView firmly in the category of courses that will succeed long after others turn into corn fields or parking lots.

While there are a decreasing number of golfers utilizing the course, the demand for premier playing conditions has remained. A few years ago and with the attitude that we did not want to sacrifice conditions, we began implementing strategic changes to our irrigation management, agronomic plan, labor management, and cultural practices employed. We evaluated the potential changes by asking ourselves three questions. Would the change save us money? Could we maintain or improve playing conditions with the change? Finally, would the change be considered environmentally friendly and go along with mission of the Byron Forest Preserve District? In order to implement the changes, each of those questions needed to be a yes.

One of the most important issues facing the management of golf course turf is water management. We are fortunate at PrairieView to have our own deep well that feeds our irrigation pond to water the course. Many courses are forced to water with municipal water supplies and pay both directly and indirectly for each gallon of water they use. Our costs are currently limited to

the indirect costs of the electricity required to run the pumps that distribute the water around the golf course. By switching to a more intensive hand watering philosophy, we have been successful in limiting the amount of water needed to maintain conditions. Combine that with a move away from prior disease management programs that called for nightly watering to disperse active ingredients to target fungal diseases, we have seen a decrease in water usage by 25% in the last five years. Eliminating the nightly watering alone conserves on average 8.5 million gallons of water per golf season. This equates to significant savings on our electric bill and also conserves a very important natural resource. It has also resulted in improving course conditioning as golfers benefit from the firmer playing surfaces.



Asst. Superintendent Greg Welker hand watering the dry edges of #16 fairway.

Another important change occurred in the development of our yearly agronomic plan. Making the change from a program that focused on a biological control of fungal diseases that affected the turf to one that relied on synthetic fungicides was one of the more difficult changes we decided to make. Any time we can make use of a biological treatment to control a pest, it is preferred. However, in this case, the disease we were targeting was causing significant damage to the turf despite its use. Dollar Spot is a fungus on cool season turf that is the most costly disease for superintendents



PrairieView Grounds Crew: left to right: Matt Henkel (Supt.), Terry Minard, Lisa Cook, Greg Welker (Asst. Supt.), Mike Johnson, Jordan Yount, Jordan Regez, Dave Fridley, Frank Noffsinger, Marcus Macklin.

to control in this region. When factoring in the amount of water that we were required to use to apply the biological control, we decided we needed to go a different route. A winter's worth of research on newer chemistries that were safer to use to target the disease began to ease the concerns of developing a new plan. Lower use rates meant less of the product was needed to achieve the desired control. Newer chemistries also offered longer periods of disease suppression, which decreased the number of applications that needed to be made. We also increased scouting efforts to better detect when disease levels crossed acceptable thresholds. Revamping the way we managed the turf has allowed us to decrease our chemical and fertilizer budget by 10%. Golfers have been rewarded with a healthier stand of turf to play from.

The biggest remaining changes involved labor management and use of cultural practices to manage turf growth. The district's commitment to making capital improvements have contributed greatly to the success of these changes. Attachments, called groomers, were added to fairway mowers to provide a higher quality of cut. The use of turf rollers provided smooth putting surfaces in less time than it would take to mow the greens. We were able to go from mowing greens seven days a week, to now sometimes mowing only four or five days. The continuation of a bunker reduction program has saved countless hours prepping bunkers for play and repairing them after washouts from heavy rains. Eliminating bent grass from two of the par three fairways has saved water, labor, and fertilizer and fungicide applications. By the end of 2015, an additional five acres of bluegrass in selected areas will be converted to native prairie grass. Each of these improvements separately may only save minutes a day. Together, the savings become significant over the course of a season. The key addition of dedicated professionals like Assistant Superintendent Greg Welker, and Assistant / Mechanic Mike Johnson, has also played an instrumental part in how we have reduced our labor budget by 16% from five years ago. The

over 1500 hours of extra work that these two gentleman and I put in during 2014 is a testament to our commitment to giving PrairieView and the Byron Forest Preserve District the best golf course we can. There are definitely some days that it feels like work, but in general, when you do something you love, you feel like you aren't working at all.

By making the changes that were discussed, the total costs



The crew opts to spot spray individual weeds when possible to avoid over applying costly herbicides. In this picture, white clover is being treated with an herbicide combined with a pigment that helps identify treated plants.

for maintaining PrairieView at its current standards is down nearly 10% from where it was in 2010. In today's economy, where the costs associated with running a business continue to climb, I am very proud of our department's efforts to make PrairieView what it is today. Moving forward, we will continue to implement changes that will not only improve upon the golfing experience at PrairieView, but will be consistent with the mission of the Byron Forest Preserve District. The beginning of the 2015 golf season is upon us. All of the hard working men and women in the grounds department would like to wish you a great 2015 golf season and we look forward to seeing you out there soon!

pvgc leagues

Men's Golf Association

The PrairieView Men's Golf Association is for all men 18 and older with a certified USGA handicap. This association will offer weekly games that are played on Sunday mornings competing in varying formats. Sign-up sheets will be posted in the men's locker room. For a full schedule of events and weekly formats visit www.prairieviegolf.com for more details.



Golf Leagues

PrairieView offers a variety of weekly 9-hole leagues for men, women and seniors. Regardless of skill level our leagues are handicapped and golfers of all abilities are encouraged to join. If you would like to register or need more information please stop in or call the golf shop at 815-234-4653.

Tuesday Ladies League

When: Tuesday Evenings
Time: 5:30 pm
Begins: April 28th
Cost: \$35 includes 9-hole handicap
\$1 per week for weekly game
Team: Two-person sign up

Senior Men's League

When: Wednesday Mornings
Time: 8 am (9 am in spring & fall)
Begins: April 22nd
Cost: \$10 for the required 9 hole handicap
\$1 per week for weekly game
Team: Individual sign up
(varied games/formats)

Wednesday Men's League

When: Wednesday Evenings
Time: 5:30 pm
Begins: May 20th
Cost: \$60 includes 9-hole handicap, year-end prize money, and banquet
Team: Two-person sign up

Sign up for our E-newsletter at
www.prairieviegolf.com

Join our VIP text club for special deals!
Text CC597 to 36000 today!

Customer Appreciation Week

Monday, April 20th - Friday, April 24th

Free Green Fees ~ \$16 per person/18-hole cart

Don't miss out on this great opportunity as tee times will fill up quickly. Call 815-234-4653.

Let us show our appreciation for your continued support of PrairieView.

Movie on the Greens

Grab the kids, neighbors and friends to head on over to PrairieView for our summer outdoor movies. Bring a blanket or chair and enjoy a movie on our New 20 Ft High Definition Screen. We will offer complimentary popcorn to accompany your viewing experience along with snacks and drinks for purchase. The Movies are scheduled for Fridays, June 19th, July 17th, and August 7th. The Movie will start at dusk and the cost is \$4 per person.

Couples Golf

Are you and your significant other looking for a fun and social evening of golf? Then look no further than our Friday night couples golf. We are excited to unveil a new schedule of formats for this year's couples events. Couples will be paired or have the option to sign up with a couple of their choice to form a foursome. Cost and start time will vary depending on event. We will be offering dinner and drink specials in the Prairie Grass Pub. You can find the full listing of couples events on the PrairieView website. For additional information or to register for a couples night, call the proshop at 815-234-4653.

Kids Play Free Program

New for the 2015 golf season is our Kids Play Free Program. All kids 11 and under accompanied by a paying adult can play free Monday-Friday after 12pm and after 2pm on Saturday and Sunday. This new program is a great opportunity for parents to get out and enjoy an afternoon of golf with their junior golfer.

Mother's Day Special - May 10th

What better way to celebrate Mother's Day than a round of golf at PrairieView. We are offering FREE green fees for all moms on their special day. PrairieView moms with a season golf pass will receive a free cart rental on this day and all other mothers only need to pay \$16 for a cart.

Outings and Events

Interested in hosting an outing or an event? Look no further than PrairieView Golf Club. Our state-of-the-art facility is perfect for hosting any outing, playday, or banquet. Our staff prides itself on providing first class service to make your event as enjoyable and successful as possible. For outing or banquet information, contact Andy Gramer at andy@prairieviewgolf.com or by calling the pro shop at 815-234-4653.



commissioners

We asked our Board of Commissioners the following questions: 1) In your time as a board member, what BFPD accomplishment are you most proud of? 2) Looking ahead at 2015, what programs/amenity improvements are you most excited to see implemented? 3) What current programs/amenities of the BFPD do you and your family most enjoy?



Trevor Hogan, President (Commissioner since 2011)

1) The accomplishment I am most proud of is the simple fact that I have been able to volunteer on the board and give back to my community that has given so much to me in my lifetime. 2) I am really excited about the museum make-over at the JPC. When it's completed, the new look and modern design will also serve as a banquet/meeting hall where our guests will be immersed in an educating environment. This concept will also make it a regional attraction for school kids near and far. 3) I always enjoy playing a round of golf at PrairieView as it was the place where I grew up during my summers as a kid. My family also enjoys hiking the trails at the preserves and my daughters love the playground at the top of the hill near the Keller Center.



Sandy Brooks, Vice President (Commissioner since 1999)

1) I am most proud of the natural areas that have been preserved and made available to the public. Along with the superior staff who is dedicated to providing an outstanding experience for our patrons. 2) I am excited about the work at the Colman Preserve that has been ongoing to make the hiking trails more accessible. I also look forward to the planning and development of the remodeling project in the Jarrett Center museum. 3) My husband and I enjoy evening walks on the main preserve site. Many times we are able to enjoy a gorgeous sunset from the hilltops. I also spend time hiking at the Colman Preserve as part of my exercise routine. There are many challenging hills within the preserve.



Dave Breen, Secretary (Commissioner since 2007)

1) I am most proud of the land purchases that have occurred while I've been a commissioner. While I have been a commissioner, the Byron Forest Preserve has purchased the Ripplinger-Gouker Preserve, Barrick Oaks Homestead Preserve, the Howard Colman Hall Creek Preserve, Swanson and Whitaker Road properties, and the Mt. Morris Boat Club. 2) Looking forward to 2015, I am most excited for the renovations to the Jarrett Prairie Center Museum. These renovations will update the museum and make it a destination for environmental education. 3) I most enjoy (and it is the main reason I am a board member) the natural areas that have been protected by the Byron Forest Preserve. These areas are natural jewels that have been protected for everyone to enjoy.



Brad Auker, Treasurer (Commissioner since 2013)

1) I am most proud of being a part of the leadership that is transforming our concession stand into a local eating destination (at PrairieView Golf Club/Prairie Grass Pub). The utilization of the deck combined with beautiful sunsets and Saro Costa's culinary skills have enhanced the experience at PrairieView. 2) I am very excited for the upcoming golf season. I see our course and club not only being a golf destination but also a family outing destination. We are implementing many new ideas and programs that will benefit most of our taxpayers. 3) I am an avid golfer and enjoy hiking the trails. My wife and I enjoy attending many of the community events at the various venues. Great facilities! We also love taking our grandchildren to as many events as possible.



Jeff Ludwig, Commissioner (Commissioner since 2003)

1) I think the biggest accomplishment is following the Forest Preserve mission statement and purchasing the property the board has chosen to restore and preserve for generations to come. Also upgrading all the maintenance and storage buildings to be more efficient, safer and of better construction to last many years. 2) I am very excited about the new electric golf carts and the upgrades that they bring. I think it will bring a better experience to golfing at PrairieView. I am also looking forward to seeing all of our restoration projects grow and bloom. I am most looking forward to planning an improvement to our nature museum for our education department to use and surrounding communities to visit and enjoy. 3) Outdoor education is a big hit with our family. We also use the walking paths and shelters.

Preserves Become Official Monarch Butterfly Waystation Sites

The Byron Forest Preserve District has joined with Monarch Watch to make the Jarrett Prairie Preserve, Nardi Equine Prairie Preserve, Howard Colman Hall Creek Preserve and Ripplinger/Gouker/Etnyre Preserve official Monarch Waystation sites.

Monarch Waystations are places that provide resources necessary for monarch butterflies to produce successive generations and sustain their migration. Without milkweeds throughout their spring and summer breeding areas in North America, monarchs would not be able to produce the successive generations that culminate in the migration each fall. Similarly, without nectar from flowers, these

fall migratory monarch butterflies would be unable to make their long journey to overwintering grounds in Mexico.

Milkweeds and nectar sources are declining due to land development and the widespread use of herbicides in croplands, pastures and roadsides. Frequent mowing along roadsides has also converted important butterfly habitat to short grassy areas that no longer produce milkweed and other flowers that are important to monarchs and other wildlife. As a result, monarch butterfly populations are on a severe decline.

To offset the loss of milkweeds and nectar sources, anyone can help by creating Monarch Waystations in home gardens, at schools, businesses or on other unused plots of land. For details on planting milkweeds and creating your own Monarch Waystation contact Monarch Watch at www.monarchwatch.org.



New Winter Lecture Series a Big Hit

This past winter's new Sunday afternoon Byron Forest Preserve Winter Lecture Series attracted large audiences. The four-week series brought in speakers for the topics of *The Greater Prairie Chicken in Illinois*, *Meteors and Their Impact on Earth*, *The Return of Bison to the Nachusa Grasslands*, and *Archaeology of the Stateline Area*. The Education Department is already looking for speakers and topics of local interest for next year's expanded 2016 Winter Lecture Series. Until then, check out the *Albert Goodwill Spalding's 165th Birthday Celebration and the Rise of Baseball at the End of the Civil War* event to be held at the Jarrett Prairie Center on Sunday, August 2nd which will feature a great lecture by Chicago baseball historian Bruce Allardice. Call 815-234-8535 x217 for more information.

Recycling Station

The Byron Forest Preserve, in conjunction with the Ogle County Solid Waste Management Department, has established a recycling station at the Forest Preserve located at the Land Management Center, 6845 German Church Road in Byron.

The station accepts glass, aluminum, plastic #1-#5, & #7, tin, steel, mixed paper, cardboard, and newspaper. The station is open during daylight hours seven days per week. Please recycle responsibly by leaving the area cleaner than when you arrived. **You no longer need to separate the items in each bin.**

We are also offering a USAgain recycling bin for clean, used clothing and shoes. The bin is located next to the other recycling bin mentioned above. This bin helps keep textiles out of the landfills.

To recycle electronics, Ogle County Solid Waste Management hosts an electronics recycling day on the last Friday of each month at 909 West Pines Road in Oregon, from 9am-4pm. Call or visit the Ogle County website at www.oglecounty.org for more information.

Upgrades at the Keller Education Center

The Keller Education Center which houses the Byron Forest Preserve District's preschool education program and other summer children's programs is undergoing some physical upgrades.

In an effort to keep our many birds from killing or injuring themselves by flying into the center's windows, new anti-collision bird tape has been installed on the picture windows that overlook the many bird feeders located on the south side of the building. All LEED (Leadership in Energy and Environmental Design) certified buildings are now required to have bird-safe window treatments. It is estimated that collisions with glass windows on homes and businesses kill nearly a billion birds in the United States each year. Since the bird tape has been installed on the Keller Center's windows, birds have avoided the reflective glass and there have been no collisions reported at these windows by our staff or students this year.

Plans are underway to add new paving and parking areas to the front of the Keller Education Center. A new closer drop off lane for preschool parents and 14 additional parking spaces will be added to the lot to make access to the building easier and safer. The construction is expected to begin in late May or early June 2015.

A new interactive electronic message board will soon be installed in the lobby of the Keller Education Center to offer paperless communication with our 80+ preschool families and the public who use the building on evenings and weekends. Information regarding preschool happenings will be offered during school hours for parents and students. The board will then switch over after normal school hours to offer different public information regarding the District's programs, special events and trail systems.



New Jarrett Prairie Center Museum Exhibit Design Plan Begins

The Byron Forest Preserve District has entered into an agreement with Split Rock Studios, an exhibit design and fabrication company located in St. Paul, Minnesota for the re-design of the Jarrett Prairie Center Museum. Split Rock Studios is a national award winning company known for their state-of-the-art interactive educational museum exhibits. Their work has included a wide variety of large and small museums, nature centers and national park visitor's centers at locations from Alaska to Florida.

The Jarrett Prairie Center Museum project will re-design and upgrade the 2,200 square foot natural history museum exhibit area. This \$750,000 project will take 18 months to complete. The project will be paid for by a combination of capital development funds, grants and corporate donations. The current natural history exhibit will continue to be open to the public until the on-site construction begins in the spring of 2016.

A Jarrett Prairie Center Museum Exhibit Development Team has been assembled to work with Split Rock Studios to design a unique exhibit that tells the story of the northern Illinois prairies, other local ecosystems and people's relationship with the land. The exhibits will be designed to serve as an educational resource for area school children's field trips and as a regional tourism destination that will highlight not only the Byron Forest Preserve District's preserves, but also other land conservation sites in the area. More detailed information regarding the project's progress will be shared in future issues of the Blaze newsletter. The grand reopening of the museum is expected to take place in late summer 2016.



Above: Members of the Jarrett Prairie Center Museum Exhibit Development Team examine the preserve's winter landscape at their first meeting on January 27, 2015. (Left to right) Susan Kleiman (Nachusa Grasslands), Travis Wood (Split Rock Studios), Isaiah Boehlert (Split Rock Studios), Mark Herman (Superintendent of Education, Byron Forest Preserve), Russell Brunner (Superintendent of Restoration, Byron Forest Preserve) and Janet Dahlberg (Assistant Superintendent of Education, Byron Forest Preserve). Not pictured Matt Kirchman (ObjectIDEA) and Todd Tucker (Executive Director, Byron Forest Preserve). Left: Bison who is a current resident at the Jarrett Prairie Center Museum.



good stuff

Beloit College to Develop New Plan for the Heritage Farm Museum

The Byron Forest Preserve District has entered into an agreement with Beloit College in Beloit, Wisconsin to develop an interpretive plan for the District's Heritage Farm Museum. Interpretive planning is an important first step in creating a unique and compelling experience for visitors to the Heritage Farm.

During the upcoming months of May and June, students and faculty from Beloit College's History and Museum Studies Departments will be conducting historical research, hosting focus groups and conducting visitor surveys regarding the Heritage Farm area. The information that they gather will be used to develop future potential themes and the best exhibit techniques for telling the story of early agriculture and local cultural history.

The Beloit College planning group will provide the District with a cost effective interpretive plan for the Heritage Farm area while giving their students interested in history and museums some professional, real-world work experience in museum planning.



Volunteers



Joe Jonakin



Dana Jonakin

Tuesday Morning Group

Come join us for a time of visiting, refreshments, and fun indoor projects including sorting, collating, preparing preschool crafts and items for graduation, cutting, labeling, and many other projects. To volunteer, call 1-815-234-8535 x217. Photo above right:

Dana Jonakin is a Tuesday Morning Volunteer.

Where: Jarrett Prairie Center

When: First Tuesday of each month
(September thru April)

Time: 8:30-11am

Individual and Organized Groups

The Byron Forest Preserve has service and volunteer opportunities at our golf course and prairie/woodland restoration. We can arrange specific projects for the interests of you or your group that will help our preserves and the Byron community. Volunteer help is also needed for our year-round special events and programs. For info, call 1-815-234-8535 ext. 217. Photo above left: Joe Jonakin is a Restoration Department Volunteer.

Wednesday Woodshop Group

Come join the area men for coffee, donuts, and the opportunity to use your skills in carpentry and woodworking. New woodshop volunteers check in at the Jarrett Prairie Center before going to the Woodshop. To volunteer, call 1-815-234-8535 x217.

Where: Expo Building Woodshop
Enter at Heritage Farm

When: Wednesdays

Time: 9-11 am

Se habla español 815-234-8535 x200

directory



General Contacts

Jarrett Prairie Center

(Headquarters)

The headquarters office is open Monday through Friday, 8am-4:30pm. The office is closed Saturday, Sunday, and select holidays.

Street Address

7993 North River Road
Byron IL 61010

Mailing Address

P O Box 1075
Byron IL 61010

Website

byronforestpreserve.com

Email

raul@byronforestpreserve.com

Main Phone Number

815-234-8535 x200

Main Fax Number

815-234-8635



Golf Club

PrairieView Golf Club

6734 German Church Road
Byron IL 61010
815-234-4653 (GOLF)

Education Centers

Jarrett Prairie Center Museum

7993 North River Road
Byron IL 61010
815-234-8535 x200
The museum hours are:
Mon., Wed., Fri.-8am-4:30pm
Tues., Thurs.-8am-8pm
Saturday-9am-4pm & Sunday-1-4pm.
Closed select holidays.

Keller Education Center

7993 North River Road
Byron IL 61010
815-234-8535 x200
Preschool and Adventure Club are held in this building.

Weiskopf Observatory

7993 North River Road
Byron IL 61010
815-234-8535 x200
(Viewing Conditions) 815-234-8535 x216
Open for free public viewing every Saturday night from dark until three hours after dark. Also open every Tuesday night in July, July, and August.

Heritage Farm Museum

8059 North River Road
Byron IL 61010
815-234-8535 x200
Museum hours (April-October):
Mon., Wed., Fri.-8am-4:30pm
Tues., Thurs.-8am-8pm
Saturday-9am-4pm & Sunday-1-4pm.
Closed select holidays.

Trails

Jarrett Prairie Preserve

7993 North River Road
Byron IL 61010
815-234-8535 x200
Open from dawn to dusk for walking, jogging, and nature exploration.

Nardi Equine Prairie Preserve

River Road
Byron IL 61010
815-234-8535 x200
Open for horseback riding, walking, jogging, and nature exploration.

Howard Colman

Hall Creek Preserve

Walden Road
Byron IL 61010
815-234-8535 x200
Open for walking, jogging, and nature exploration.

Ripplinger/Gouker/Etnyre Preserve

Townline Road
Byron IL 61010
815-234-8535 x200
Open for leashed dog walking, hiking, jogging, and nature exploration.

The Barrick Oaks Homestead Preserve is not yet open to the public but will be opening very soon.



IS YOUR CD MATURING SOON?

If you have a CD maturing soon, it is time to decide the best course of action. Just because a CD was the right product for you in the past does not mean it is still the best option.

CDs are federally insured and offer a fixed rate of return, if held to maturity whereas both the principal and yield of investment securities will fluctuate with changes in market conditions.

**Call today for more information
or to schedule a consultation**



Byron FINANCIAL
SERVICES
Located at Byron Bank



Gene Hartzell, CFP®
CERTIFIED FINANCIAL PLANNER™

Dan Leonard, CFA
Chartered Financial Analyst
200 N. Walnut St., Byron, IL 61010
815.234.4075

Chris Martin
Investment Consultant
101 N. 4th St., Oregon, IL 61061
815.732.1528
www.ByronBank.com

Securities offered through LPL Financial, member FINRA/SIPC.
Insurance products offered through LPL Financial or its licensed affiliates.
The investment products sold through LPL Financial are not insured
Byron Bank deposits and are not FDIC insured. These products are not
obligations of Byron Bank and are not endorsed, recommended by
Byron Bank or any government agency. The value of the investment may
fluctuate, the return on the investment is not guaranteed, and loss of
principle is possible.



BYRON FOREST PRESERVE DISTRICT
P O BOX 1075
7993 NORTH RIVER ROAD
BYRON IL 61010

PERMIT NO. 67
BYRON IL 61010