

# THE BLAZE

A PUBLICATION  
OF THE  
**BYRON  
FOREST PRESERVE  
DISTRICT**

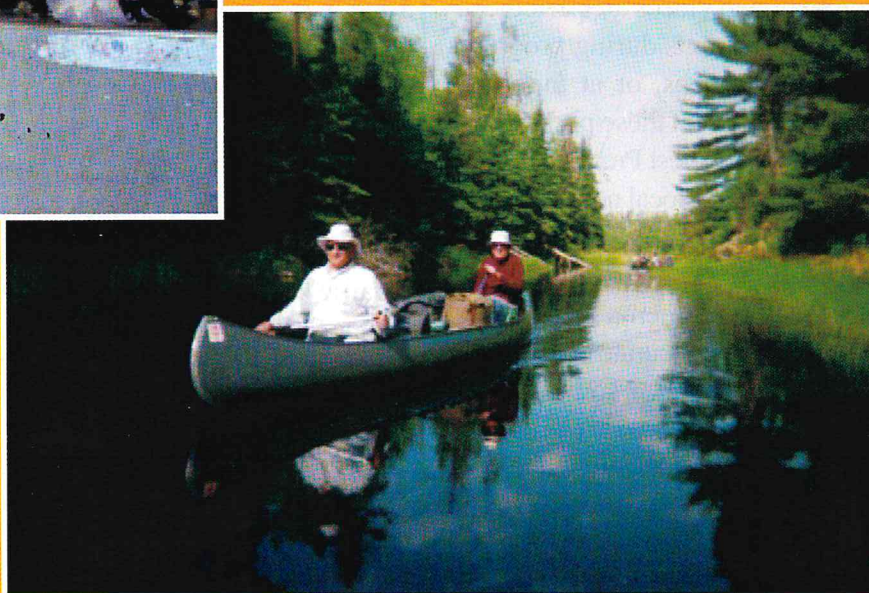
2003 FALL/WINTER ISSUE



## INSIDE...

## PAGE

- Special Events ..... 4
- Outdoor Adventure  
Programs ..... 6-7
- Scholarships ..... 15
- School Day Off  
Programs ..... 17-18



VISIT US ONLINE:

[byronforestpreserve.com](http://byronforestpreserve.com) • [prairieviewgolf.com](http://prairieviewgolf.com) • [stonequarrypark.com](http://stonequarrypark.com)





# General Information

## Program Registration Dates:

**Begins:** Mon., Aug. 11  
**Preschool Registration is ongoing.**

## Jarrett Prairie Center Hours:

Monday-Thursday 8am-8pm  
Friday 8am-4:30pm  
Saturday 9am-4pm  
Sunday 1-4pm

## Jarrett Prairie Center is closed:

Thanksgiving Day & Christmas Day

## Administrative Offices are closed:

Labor Day  
Columbus Day  
Veteran's Day  
Thanksgiving Day  
Day after Thanksgiving  
Christmas Day

## Photography Policy

Photographs and videos are periodically taken of participants during programs, special events, trips, or at the parks. Please be aware that these photographs may be used for Forest Preserve District publications and/or local newspapers.

## Errors and Adjustments

While we try to be accurate in presenting information in the *Blaze*, some unavoidable errors or changes to the programs, fees, schedules, and other information may occur. The Forest Preserve District apologizes for any inconvenience that results from the necessary adjustments.

**Byron Forest Preserve District**  
**7993 North River Road, P O Box 1075, Byron IL 61010**  
**815-234-8535 • byronforestpreserve.com**

## Board Meetings

The Byron Forest Preserve District Board of Commissioners meetings are held on the third Tuesday of each month at 6:30 pm at the Jarrett Prairie Center, 7993 North River Road, Byron.

## Board of Commissioners

Kimberly Houser ..... President  
Jeff Huber ..... Vice President  
Jeff Ludwig ..... Secretary  
Sandy Brooks ..... Treasurer  
Ken Ledene ..... Commissioner

## Administrative Staff

Executive Director	Edward Clift	234-8535 ext. 201
Deputy Director/Restoration Supt.	Todd Tucker	234-8535 ext. .
Education/Recreation Supt.	Richie Wolf	234-8535 ext. 217
Stone Quarry Rec. Park Manager	Jan Sealby	234-8900
PrairieView Golf Course Manager	Steve Murray	234-4653 ext. 12
Golf Course Maintenance Supt.	Steve Storz	234-8535 ext. 208
Construction Manager	Jim Burge	234-8535 ext. 211
Blaze Editor/Admn. Svcs. Coord.	Michelle Lipps	234-8535 ext. 224

## Other important phone numbers:

Facility Rentals/Banquet/Meeting Rooms	234-8535 ext. 200
Program Registration/Information	234-8535 ext. 200
PrairieView Golf Course	234-4653 (GOLF) ext. 10
Stone Quarry Recreation Park	234-8900
Adventure Miniature Golf Course	
The Rock Skate Park	234-7625 (ROCK)
Jarrett Prairie Center Museum	234-8535 ext. 200
Heritage Farm Museum	234-8535 ext. 200
Weiskopf Observatory	234-8535 ext. 216

## Please Register Early

By registering early, each program, trip, and event has the best opportunity to reach the minimum number required for that activity. If there are not enough registrants, the course is cancelled so showing up at the first class will not save that program.

# General Information



**BYRON  
FOREST  
PRESERVE  
DISTRICT**

## Mission Statement

*Preservation ~ Education ~ Recreation*

The mission of the Byron Forest Preserve District is to provide for Preservation of Open Space/Natural Resources, provide Education concerning our Natural Environment/Heritage, provide Recreational Opportunities and Enterprise Operations that are consistent with our Agency goals.

## Follow The Rules

Recently, some Forest Preserve guests were not aware of the rules regarding horses, bikes, dogs, and motorized vehicle use on District property.

The following rules are in place at the Forest Preserve:

**-Horseback Riding** - No person shall bring, load, unload, use, or ride any horse on District property except where allowed. At this time, there are no designated horseback riding areas.

**-Bikes** - No person shall ride a bicycle on any path, trail, roadway, or other area except where allowed. The only bike path at the Forest Preserve is the Don Hamer Recreation Path that leads from Sunshine Park in Byron into the Forest Preserve along the road to the Jarrett Prairie Center.

**-Dogs** - No person shall bring in, lead, or carry any dog that is unleashed or on a leash longer than ten feet onto District property except where allowed. Dogs are allowed on the Don Hamer Recreation Path only. Dogs are not allowed to run at large (unleashed) on District property.

**-Motorized Vehicles** - No person shall operate any motorized vehicle, licensed or not licensed, anywhere on District property except on the roads, drives, and parking areas provided. Vehicles not so licensed include snowmobiles, go-carts, mini-bikes, and such other all-terrain vehicles.

## Byron Recreation Path

### *Provides Safe Routes for Children*

The Byron Forest Preserve District has been a major participant and contributor with the Byron Recreation Path Citizens Committee over the past eight years. We have assisted with building the paths from the Byron Schools to north of town and from the Rock River Bridge to the Jarrett Prairie Center, PrairieView Golf Course, and Stone Quarry Recreation Park. Our Board of Commissioners over the years has felt an obligation to assist in providing a safe route (especially for children) in our district to our various recreation facilities that are located on the south side of the Rock River. We encourage all residents to use these paths to regularly visit our facilities.

## Participant Behavior

Participants are expected to exhibit appropriate behavior at all times, as follows:

1. Show respect to all participants and staff.
2. Refrain from using foul or obscene language.
3. Refrain from causing bodily harm to participants or staff.
4. Show respect for facilities, parks, equipment, and supplies.

## Children Released to Authorized Parents/Guardians

It is the responsibility of the custodial parent to provide the Forest Preserve with documentation as to whom a child should be released.

## Contents

<b>Special Events .....</b>	<b>4</b>
<b>Preschool .....</b>	<b>5</b>
<b>Outdoor Adventure .....</b>	<b>6-7</b>
<b>Arts &amp; Crafts .....</b>	<b>8</b>
<b>More Fun! .....</b>	<b>9</b>
<b>Meet Our Staff .....</b>	<b>10</b>
<b>Registration Form .....</b>	<b>11</b>
<b>Director's Message .....</b>	<b>12</b>
<b>Facilities .....</b>	<b>13</b>
<b>Potpourri .....</b>	<b>14-15</b>
<b>Winter Sports .....</b>	<b>16</b>
<b>Safety Classes .....</b>	<b>17</b>
<b>School Day Off .....</b>	<b>17-18</b>
<b>Stone Quarry Recreation Park .....</b>	<b>18</b>
<b>PrairieView G.C. ....</b>	<b>19</b>

# Special Events

## Heritage Day

Enjoy the Heritage Farm Museum, candle making, fiddler, beekeeping demonstration, tractor show, and food.

Where: Heritage Farm, 8059 N. River Rd., Byron  
When: Saturday, September 13  
Times: Noon-5pm  
Ages: All  
Cost: Free - Donations accepted



## Halloween on the Prairie

We're back for our most popular special event. Scarey hayrides, straw maze, giant bounce, crafts, food, and games are planned for this year. Games by the Byron Park District, 1-5:30pm. Groups are needed along the hayride route to scare everyone. You can win cash prizes! If you would like to participate, call Richie at 234-8535 x217.

Where: Jarrett Prairie Center, 7993 N. River Rd.  
When: Sunday, October 26  
Time: 1-6pm  
Ages: All  
Cost: \$2 per hayride, \$1 for bounce  
Small fees for games  
Crafts, palm reader, and straw maze are free



## Holiday Craft Show

Find that special holiday gift at this two-day event. Over 30 vendors. Food and drinks also available.

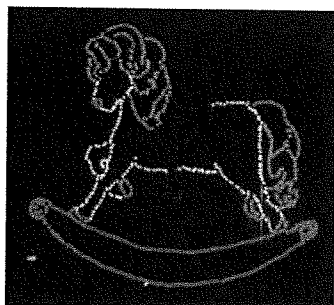
Where: Jarrett Prairie Center, 7993 N. River Rd.  
When: Sat-Sun, November 15 and 16  
Times: 9am-4pm  
Cost: Free Admission



## Holiday Light Show

Bring the family out to the Forest Preserve for a ride through the light displays. Everything from Santa Claus to a monkey and a peacock.

Where: 7993 N. River Rd., Byron  
When: November and December  
Times: Dark until 10pm  
Cost: Free



## Byron Forest Preserve Preschool

Is there a preschool age child in your family? If so, we have a place for them to learn and have fun at the same time! The Byron Forest Preserve Preschool has openings for 3, 4, and 5-year olds to attend either a morning or an afternoon session for Fall 2003. Registration is currently open for classes meeting on Monday and Wednesday morning or afternoon and for Tuesday and Thursday morning or afternoon. Morning classes will meet from 9-11:30 a.m. and afternoon classes will meet from 1-3:30 p.m. The maximum enrollment for each session is 14 children.

Preschool classes are taught by Mrs. Dawn Schad, a certified teacher, along with classroom aide, Ms. Julie Bozzi. The children spend time each day working on small motor skills with puzzles and other manipulative toys as well as enjoying games and outdoor activities to improve their large motor skills. Lesson time in-

troduces the children to the alphabet and the sounds letters make, colors, numbers and other kindergarten readiness skills. Children also have an opportunity for free play where they can learn sharing and use their imaginations. The facilities at the Jarrett Prairie Center including the museum, the prairie trails, and the woodland areas are all utilized to help the children learn to enjoy nature and learn more about their world.

Where: Jarrett Prairie Center  
7993 N. River Rd.

When: Mon. & Wed. or  
Tues. & Thurs.

Times: 9-11:30am or  
1-3:30pm

Ages: 3-5 years old

Min/Max: 6/14

Cost:

\$56 per month for Mon. & Wed.

\$58 per month for Tues. & Thurs.  
(difference due to Monday holidays)

## Breakfast Buddies

Wake up to breakfast and a book. Have fun listening to a story and then make a breakfast based on the book. Call 234-8535 x200 to register.

Where: Jarrett Prairie Center  
7993 N. River Rd.

When: Saturdays  
Sept. 6, Oct. 4,  
Nov. 1, & Dec. 6

Times: 9-10am

Ages: 3-7 years old with parent

Fee: \$7.50/child and parent

Instructor: Dawn Schad

Min/Max: 3/20

## Mom's Day Out

Preschool parents can enjoy a Friday to themselves from 9-11am or 1-3pm in the fall. This recreational day involves crafts, stories, and outdoor adventure for 3-5 year olds. Must pre-register by calling 234-8535 x200.

Where: Jarrett Prairie Center  
7993 N. River Rd., Byron

When: Fridays in September,  
October, and November

Times: 9-11am or 1-3pm

Ages: 3-5 years old

Cost: \$15 for two classes or  
\$30 for the month

Instructor: Julie Bozzi

Min/Max: 3/14

## Free Kids Concerts

**Sat., November 8 - 3-4pm**

*MizBeeHaven*

Local beekeeper Jeff Ludwig will explain a honeybee's busy lifestyle and how they make honey.

**Sat., December 13 - 3-4pm**

*Meet the Mascots -*

*Icehogs & Riverhawks*

Rockford's hockey and baseball team mascots will visit us and we'll learn how to have fun rooting for our home teams!



# Outdoor Adventure

## Downstream Canoeing on the Rock

Enjoy a leisurely ride down the river. All equipment provided. Must have one adult per canoe. Call 234-8535 x200 to register.

Where: Meet at the river parking lot  
across from Heritage Farm  
When: Sunday, October 19  
Time: Noon-3pm  
Cost: \$20/canoe. 3-4 people  
Ages: All  
Instructor: Richie Wolf

## Wild Edibles Class

The next time you and your family are out enjoying nature and you're asked, "can you eat that", be prepared to answer. Learn what's good to eat in nature. Call 234-8535, x200 to register.

Where: Meet at the Jarrett Prairie Center  
7993 N. River Rd., Byron  
When: Saturday, October 11  
Time: 6pm  
Ages: All  
Cost: \$2/person  
Instructor: Richie Wolf

## Caving for Adults

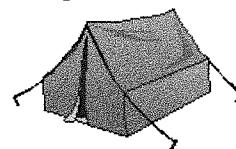
We'll visit two Iowa caves and discover the beauty of the subterranean world. Learn proper techniques and common sense rules. Transportation provided. Call 234-8535 x200 to register.

Where: Meet at the Jarrett Prairie Center  
7993 N. River Rd., Byron  
When: Saturday, November 1  
Time: 7am-7pm  
Ages: 18 and up  
Cost: \$20/person  
Min/Max: 5/14  
Instructor: Bob Piros

## Camping at Shabbona Lake

We'll camp and canoe at Shabbona Lake State Park in Shabbona, Illinois. Transportation is provided. Call 234-8535 x200 to register. Canoes, food, and tents provided.

Where: Meet at the Jarrett Prairie Center  
7993 N. River Rd., Byron  
When: Friday, November 21  
Time: 5pm  
Ages: All. One adult per tent required  
Cost: \$60 per tent  
Instructor: Richie Wolf



## Beginning Fly Fishing

Explore the theory and learn proper mechanics of fly fishing with on the water instruction on the nearby Rock River. Equipment required by the second meeting. Call 234-8535 x200 to register.

Where: Meet at the Jarrett Prairie Center  
7993 N. River Rd., Byron  
When: Tuesdays, Sept. 2, 16, 23, & 30  
Time: 5:30-7:30pm  
Ages: 18 and up  
Cost: \$15 for all sessions  
Instructor: Bob Piros

## Retreiver's Workshop

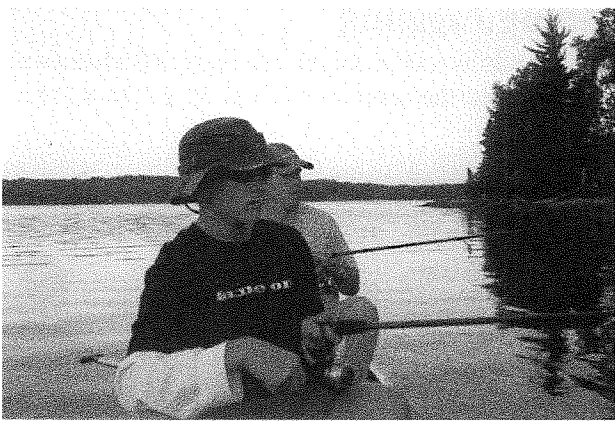
Want to improve your dog's retrieving skills for hunting or play? This fun program is for you. Call 234-8535 x200 to register.

Where: Meet at the river parking lot.  
across from Heritage Farm  
When: Saturdays, September 20 & 27  
Time: 9am-1pm  
Ages: Handlers must be  
at least 10 years old  
Cost: \$10 for  
both sessions  
Instructor: Caleb Hardy





# Outdoor Adventure



*Todd Tucker, Superintendent of Restoration and Andy Davis (front). Boundary Waters Trip in June.*

## Fall Color Tour of Starved Rock State Park

Enjoy a comfortable van ride through this beautiful park. We'll also visit a lock on the Illinois River. An easy hike to view the leaves changing is planned. Includes transportation and naturalist. Register by calling 234-8535, ext. 200

Where: Meet at the Jarrett Prairie Center  
7993 N. River Rd., Byron  
When: Saturday, September 27  
Time: 1-7pm  
Cost: \$15/person  
Ages: All  
Instructor: Richie Wolf

## Sleep With The Animals

See what the animals do after closing in the museum. Bring a sleeping bag and pillow for this exciting overnighter. Dinner and breakfast included in fee. Call 234-8535, ext. 200.

Where: Jarrett Prairie Center  
7993 N. River Rd., Byron  
When: Friday, September 19 and  
Friday, November 14  
Times: 6pm-10am  
Ages: 6-12  
Cost: \$25/child  
Instructor: Education Staff



*Enjoying nature at the Jarrett Prairie Preserve.*



*Left-Right: Caleb Hardy, Merlin Hagemann, and Lenny Unterberger. Boundary Waters Trip in June.*

## Meet The Eagles Trip

We'll head down to Mississippi Palisades State Park to view wild bald eagles. Transportation is provided. We'll stop in Savanna, Illinois for lunch. Call 234-8535 x200 to register.

Where: Meet at the Jarrett Prairie Center  
7993 N. River Rd., Byron  
When: Saturday, December 6  
Times: 9am-4pm  
Ages: All  
Cost: \$10/person  
Instructor: Richie Wolf

# Arts & Crafts

## Picasso on the Prairie

Learn many different types of art. Materials provided. Just bring your creativity! Call 234-8535 x200 to register.

Where: Jarrett Prairie Center  
7993 N. River Rd., Byron

When: Saturdays

September 13, 20 & 27  
*Seeing how an artist sees.* How to "look" and put what you see on paper.

October 4, 11, & 18  
*Cartooning* - make your own comic book or comic strip.

November 1, 8, & 15  
*Acrylic painting* - learn the basics.

December 6, 13, & 20  
*Anime* - just like Dragonball Z, YuGiOh!, and more.

Time: 11am-2pm  
Cost: \$30/month  
Ages: 6 years old and up  
Instructor: Janet Dahlberg



## Basket Making

We will be making a small market basket with a base of 9" x 5 1/2" and a height of 7". You will have your choice of colors with which to accent your basket. Each student should bring a pencil, measuring tape, scissors, small screw driver, spray bottle, pinch clothespins, a knife, and a small towel. Weaving materials will be provided. Call 234-8535 x200 to register.

Where: Jarrett Prairie Center  
7993 N. River Rd., Byron  
When: Wednesdays, October 22 & 29  
Times: 6-10pm  
Ages: 4th grade and up  
Cost: \$39/person for both classes  
Instructor: Elaine Ahlberg

## Beginning Juggling

Basic juggling skills will be taught. Students will advance to the 3-ball cascade and the reverse cascade. Call 234-8535 x200 to register.

Where: Jarrett Prairie Center  
7993 N. River Rd.,  
Byron

When: Tuesdays,  
November 4, 11,  
18, & 25

Times: 6:30-8pm  
Ages: 6th grade and up  
Cost: \$10/person for  
all sessions

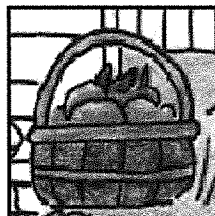
Instructor: Bob Piros



## Creative Memories

Creative Memories scrapbooking classes are held on the following dates at the Jarrett Prairie Center by Cindy Adams and Vicki Miller. If you're interested in signing up for one of their classes, please call Cindy at 234-7505.

Mon., Aug. 4	4-Hour Workshop	\$5	6-10pm
Fri., Aug. 22	Pizza Night Crop	\$10	6-11pm
Fri., Sept. 5	Pizza Night Crop	\$10	6-11pm
Sat., Sept. 6	12-Hour Workshop	\$25	9am-9pm
Fri., Sept. 26	Pizza Night Crop	\$10	6-11pm
Fri., Oct. 17	Potluck Scramble	\$8	6-11pm
Sat., Oct. 18	Crotoberfest	\$15	9am-4pm
Thurs., Nov. 6	4-Hour Workshop	\$5	6-10pm
Fri., Nov. 21	Christmas Open House & Workshop	\$10	4-11pm
Sat., Nov. 22	Christmas Open House & Workshop	\$5	9am-1pm
Fri., Dec. 5	Pizza Night Crop	\$10	6-11pm





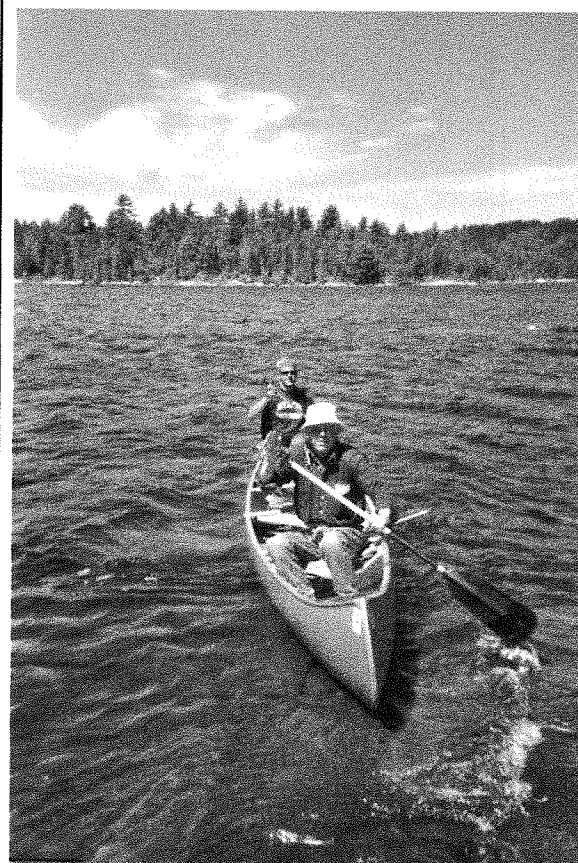
# More Fun!!



*Free Kids Concert Series at the Jarrett Prairie Center.*



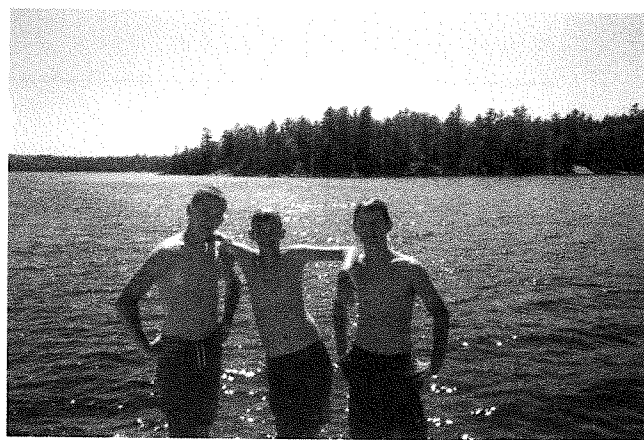
*Awesome sled hill when Mother Nature cooperates!*



*Ken Lapp (front) and Caleb Hardy.  
Boundary Waters Trip in June.*

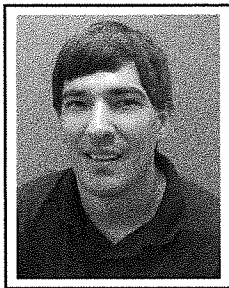


*Prairie Trails Summer Camp kids having fun at the  
Adventure Miniature Golf Course at Stone Quarry  
Recreation Park.*



*Andy Davis, Tyler Hagemann, and Nick Ludwig.  
Boundary Waters Trip in June*

# Meet Our Staff



*Richie Wolf, Superintendent  
Education & Recreation Department*

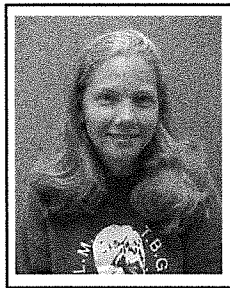
Richie has served as superintendent for the past three years. He resides in Byron with his wife, Jolanta, and newborn daughter, Celeste.

***"The diversity of our programs is what makes us strong."***

Previously, he was employed as Director of Parks and Recreation for the City of Fostoria in Ohio.

He was also an Interpreter for the MetroParks of Toledo, Ohio. Richie graduated with two Associate's Degrees, one in fish and wildlife management and the other in interpretive services from Hocking College in Nelsonville, Ohio. He also has a Bachelor's Degree in recreation and leisure from the University of Toledo.

Richie says, "The diversity of our programs is what makes us strong. The Natural History Museum, Heritage Farm Museum, Weiskopf Observatory, and two concert series offer family fun during every month of the year."

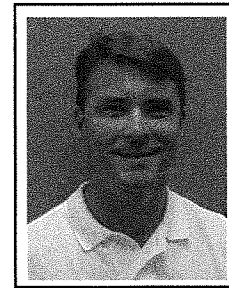


*Janet Dahlberg, Assistant Superintendent  
Education & Recreation Department*

Janet graduated from the University of Miami with a Bachelor's Degree in biology with a minor in marine science. She earned her Master's Degree from Northern Illinois University in education specializing in Outdoor Education. Janet has previously worked with the Illinois Department of Natural Resources and Northern Illinois University in outdoor education. She has extensive volunteer experience with the Zoological Society of Florida and the Marine Mammal Stranding Network.

Janet leads our Earthkeepers Education Program for most of the Ogle County Schools. She is also the director of our Prairie Trails Summer Day Camp.

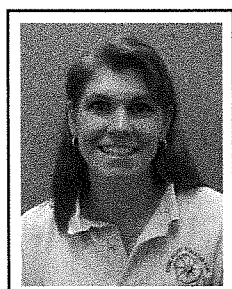
Janet says, "I was outside every minute as a kid, and that hasn't changed much. I love sharing the great experiences that can only be found in nature with all of the young people who are in our programs. It's one of the best feelings in the world to see a child's face light up with wonder at a new discovery."



*Steve Murray, Head Golf Professional  
and Clubhouse Manager  
PrairieView Golf Course*

Steve grew up in the Freeport area and participated in sports in high school. He attended the University of Louisville in Kentucky on a golf scholarship and graduated with a Business Administration Degree while achieving the Dean's List seven times. Steve resides in Winnebago with his wife, Jodi, and their son, Andrew. Steve was an Academic All American in 1994. He has four Illinois PGA victories and twenty top-ten finishes. He is a four-time Royal Cup team member (top ten Illinois PGA-Assistants points list), 2002 and 2003 Radix C Member (top ten from Illinois PGA-Bernardi points list). Steve previously worked for the Aldeen Golf Club as First Assistant and Director of Instruction.

Steve says, "I am excited to be a part of PrairieView Golf Course and the Byron Forest Preserve. PrairieView is emerging as one of the best golf courses in Northern Illinois and to be involved with the change and growth of such a great facility is exciting."



*Jan Sealby, Manager  
Stone Quarry Recreation Park*

Jan grew up in Massachusetts, where she graduated from Bridgewater State College with a Bachelor's Degree in physical education and a Teaching Certification for grades K-12.

She taught high school physical education and health, and was a Manager and USGF Instructor at the Gymnastic Academy of Boston before relocating to Illinois. She has taught at the Naperville YMCA, and was the Assistant Children's Activities Coordinator for Lifetime Fitness before moving to Byron two years ago with her husband Randall, and 3 children, Rachel, Reid, and Ross.

Jan worked in our Education Department before transferring to Stone Quarry.

Jan says, "I love creating fun! I also love spending time with kids of all ages. At Stone Quarry, I get to do these things every day. Moving to Byron has been like finding a treasure. It's a great small town for raising a family. There's so much to do! Working at the Forest Preserve has shown me how many different activities are out there for every member of my family."

# BYRON FOREST PRESERVE DISTRICT REGISTRATION FORM

Family Last Name \_\_\_\_\_

1. Payment: \_\_\_Cash \_\_\_Check \_\_\_Credit card

Address \_\_\_\_\_

2. Cardholder Number

City, State, Zip \_\_\_\_\_

--	--	--	--	--	--	--	--	--	--	--	--	--	--	--	--	--	--	--	--

Home Phone \_\_\_\_\_ Emer. Phone \_\_\_\_\_

3. Expiration Date \_\_\_\_\_

(One line per person per activity)

4. Authorized Signature \_\_\_\_\_

Activity Name	Fee	Participant's First Name (and last if different)	Sex	Birthdate Mo/Day/Yr	Grade
Total Payment		M V C K S			

I have carefully read the insurance liability waiver on this form and understand that my signature is required below in order for the above names to participate in Byron Forest Preserve District programs.

Additional information: \_\_\_\_\_

Signature of parent, guardian, or adult participant \_\_\_\_\_

Date \_\_\_\_\_

Signature of participant (non-adult) \_\_\_\_\_

Date \_\_\_\_\_

**Bring, mail, or fax to: 7993 North River Road, P O Box 1075, Byron IL 61010-1075 FAX-(815) 234-8635**

## WAIVER AND RELEASE OF ALL CLAIMS

Please read this form carefully and be aware that when registering yourself or your minor child/ward for participation in the program(s) identified on this form, you will be waiving and releasing all claims for injuries you or your minor child/ward may sustain arising from the program.

In consideration of permission granted to me and/or my child/ward by the Byron Forest Preserve to participate in this program(s), the sufficiency of which, I or my child/ward hereby acknowledge and agree as follows:

I recognize and acknowledge that there are certain risks of physical and emotional (or psychological) injury to participants in a program and I agree to assume the full risk of any injuries, damages, or losses which I or my minor child/ward may sustain as a result of participating in any and all activities connected with or associated with such program(s).

I agree to waive and relinquish all claims I or my minor child/ward may have as a result of participating in the program against the District and its officers, agents, servants and employees.

I do hereby fully release and discharge the District and its officers, agents, servants, and employees from any and all claims from injuries, damages, or losses which I or my minor child/ward may have or which may accrue to me or my minor child/ward and arising out of, connected with, or in any way associated with the activities of the program(s).

I further agree to indemnify and hold harmless and defend the Byron Forest Preserve and its officers, agents, servants, and employees from any and all claims resulting from injuries, damages and losses sustained by me or my minor child/ward and arising out of, connected with, or in any way associated with the activities of the program(s).

I acknowledge that the participant whom I am enrolling in this program (whether myself or my minor child/ward) does not have a physical or mental condition that would pose a direct threat to the health or safety of either the participant or others involved in the program. While the existence of a physical or mental condition will not preclude the participant from participating in the program, I agree that I will advise the District when that condition may pose a direct threat to the health and well being of the participant or others so that the District may have the opportunity where possible to modify its programs, practices, or services to eliminate or reduce that risk to an acceptable level.

In the event of any emergency, I authorize the District's officials to secure from any licensed hospital, physician, and/or medical personnel any treatment deemed necessary for me or my minor child/ward immediate care and agree that I will be responsible for payment of any and all medical services rendered.





# Director's Message

Dear Friends,

The Byron Forest Preserve District has continued its efforts to encourage citizen involvement in the planning/operations of your District and has worked hard on a major donation to our District. I will highlight a few of these projects and the major donation to the District.

## *One Million Dollar Donation*

Over the past four years, the Forest Preserve Board and Executive Staff have been working on a land acquisition that totals almost 500 acres. At the time of this printing, we are in the last stage of finalizing both a donation and purchase of land from two land owners. Mr. Stephen J. and Deirdre Nardi have graciously agreed to donate almost 300 acres appraised at \$937,000 to the Byron Forest Preserve District. Mr. Nardi has visited this area for over 40 years and wishes that his property remain open space for all future generations. Our Board and Staff thank the Nardi's for their generosity and concern for preservation in the growing Byron area, without their donation, none of this acquisition would have been possible. Our agency also qualified for an Open Lands Trust State Grant in the amount of \$892,500 toward this total acquisition, thus the total costs for the Forest Preserve District will be \$107,500 or \$218 per acre. It should be noted that by using funds from the Prairie View Golf Course Enterprise Fund to pay the \$107,500, there will be no local Forest Preserve District Levied Tax Dollars used in the direct purchase price of these properties.

## *Grants Awarded*

Over the past three years, our Board and Staff have worked hard in securing local, state, and federal grants for various Forest Preserve projects/programs. These grant programs are money that you and I all pay into through State/Federal Taxes and we have attempted to receive some of this money back into our community for local benefit. Some of the grants received over the past few years are outlined below:

Land Acquisition	\$892,500
Stone Quarry Park	\$270,500
The Rock Skate Park	\$75,000
Heritage Farm	\$100,000
Museum Signs	\$7,602
Restoration	\$2,000

Jarrett Prairie Center	\$28,000
Ogle Co. Solid Waste	\$1,690.95
Rockford Arts Council	\$1,915

We have received almost 1.4 million dollars in grants and are continually searching for other grants to pursue on your behalf.

## *Heritage Farm Museum*

The Heritage Farm Citizens Committee has been active for the past eight years and continues to generate new and excited citizens to volunteer for this museum project. We have had over 50 citizens participate on this project and their enthusiasm never dwindles. Currently, the Farm House Committee is 95% finished and needs only a couple of items to finish the house. The Barn Committee is about 50% finished and is now working on setting up more exhibits in the barns for public display. If you have any items for the committee or wish to volunteer, please contact me at 234-8535 x201.

## *Stone Quarry Recreation Park*

During the past four years, the Forest Preserve Board of Commissioners and Staff have worked closely with the Byron Community Revitalization, Inc. (BCR) Adult and Teen Activities Committee to seek community input, help develop plans, secure grants, and perform research in each phase of this project. Currently, the Rock Skate Park and the Adventure Miniature Golf Course are both open to the public. By Memorial Day 2004, we should have the community/teen center, playground for 2-5-year-old children, playground for 6-12-year-old children, water playground, basketball courts, volleyball court, baseball/softball batting cages, and two picnic shelters ready for the public. That will finish phase III of the project and any future phases will need additional community input and approval from our Board of Commissioners. I would like to thank the hundreds of youth and parents who have worked on this project over the past four years. If any teens or citizens wish to become involved with this project, please contact me at 234-8535 x201.

Sincerely,  
Ed Clift

# Facilities

## **Jarrett Prairie Center / Natural History Museum • 234-8535 x200**

Habitat exhibits, dioramas, audio interpretation, and view of the prairie. Wetland, woodlands, and prairie environments are displayed pre-European settlement. You may also get a souvenir in our gift shop.

Where: Jarrett Prairie Center, 7993 N. River Rd., Byron

When: Open Every Day

Time: Mon-Thurs 8am-8pm

Fri 8am-4:30pm

Sat 9am-4pm & Sun 1-4pm

Cost: Free

Ages: All



## **Weiskopf Observatory • 234-8535 x200**

View the stars and planets through our 11" Celestron telescope. Experienced staff will guide you through the skies. Call for viewing conditions at 234-8535, ext. 216. Closed if cloudy.

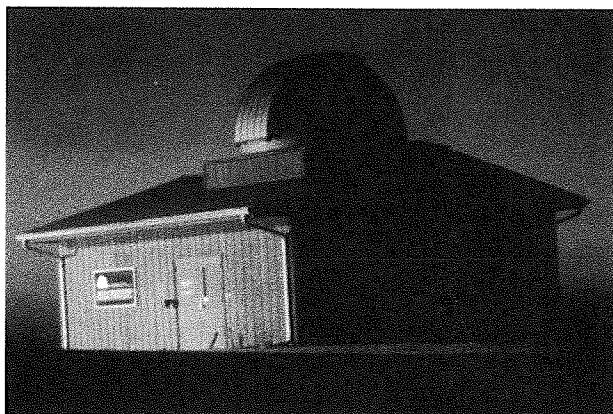
Where: 7993 N. River Rd., Byron

When: Tuesdays & Saturdays

Time: Dark until 3 hours after dark

Cost: Free

Ages: All



## **Heritage Farm Museum • 234-8535 x200**

Enjoy a free self guided tour of this 1800's farm and museum with audio interpretation. Includes a grout house, corn crib, wind mill, and more. Home of the Annual Maple Syrup Festival in March.

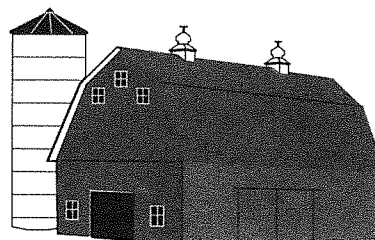
Where: 8059 N. River Rd, Byron

When: Every day thru October 31

Times: Mon-Fri 8am-4:30pm

Sat 10-4pm & Sun 2-6pm

Cost: Free



*PrairieView Golf Course • 234-4653 (GOLF)*

*Stone Quarry Recreation Park • 234-8900 ~ The Rock Skate Park • 234-7625 (ROCK)*

# Potpourri

## Recycling Station

The Byron Forest Preserve, in conjunction with the Ogle County Solid Waste Management Department, has established a recycling station at the Forest Preserve. The station accepts glass, aluminum, plastic #1-5 & #7, tin, steel, mixed paper, cardboard, and newspaper. The bin is located in the maintenance parking lot at 7993 N. River Rd. in Byron. The station is open during daylight hours seven days per week. Please recycle responsibly by leaving the area cleaner than when you arrived.

## Volunteering Opportunities

Are you looking for an opportunity to become a part of the community? Look no further!! The Byron Forest Preserve has a variety of areas that you can become involved in. There are opportunities for those who have a skill, and those who have an interest. Call Sheri at 234-8535 x203. Some areas of service include:

- \*Jarrett Prairie Center Events
- \*Education Programs
- \*Recreation Programs
- \*Museum Tours
- \*Kids Concerts
- \*Summer Concerts
- \*Weiskopf Observatory
- \*Heritage Farm Events

- \*PrairieView Golf Events
- \*Stone Quarry Events and Development
- \*Prairie Restoration and Preservation
- \*Tuesday Volunteer Group
- \*Wednesday Woodshop Group
- \*Golf Course Maintenance

## Come Join Our Community of Volunteers

*Each person who gives of themselves, gives to themselves.*

As the Byron Forest Preserve is expanding in size and the number of programs, the opportunities for volunteers are growing and changing. Weekly, seasonal, and special event opportunities are available. There are indoor or outdoor events and projects you can become a part of. Families can volunteer as well as individuals. Volunteer and service opportunities can be arranged for groups such as boy scouts, girl scouts, youth groups, school groups, and others. For more information, call Sheri at 234-8535 x203.



Sheri Romine  
Volunteer Coordinator

### Tuesday

#### Morning Group

Come join us for a time of visiting, refreshments, and fun indoor projects.

Where: Jarrett Prairie Center  
7993 N. River Rd., Byron

When: Tuesdays, Year Round

Time: 8:30-11am

Cost: Free

Ages: All

### Wednesday

#### Woodshop Group

Come join the area men for coffee, and a time to use your skills in carpentry and woodworking.

Where: Jarrett Prairie Center  
7993 N. River Rd., Byron

When: Wednesdays, Sept.-May

Time: 9-11am

Cost: Free

Ages: Adults

## Individual and Family

The Byron Forest Preserve has several volunteer opportunities for individuals and families interested in sharing of themselves for special events, programs of both educational and recreational orientation. These events and programs run throughout the year. For more information, call Sheri at 234-8535 x203.

## Organized Groups

The Byron Forest Preserve has service and volunteer opportunities. We can arrange times and specific service areas for you and your group. These areas can be related to awards, badges, or just for the benefit of learning to serve your community and others. For more information, call Sheri at 234-8535 x203.



## Field Trips to Natural History Museum, Weiskopf Observatory, and Heritage Farm Museum

Scouts, schools, and senior groups are welcome to the Forest Preserve for an educational and fun tour of our great museums. Staff welcome and give tours for the low cost of \$1.50 per person with a minimum of \$30 per group. We offer many sessions to choose from including prairie ecology, animal encounter, and group dynamics. Call 234-8535 x217 to schedule your next outing with us.

## Attention, Hunters...

Hunting and retrieving wounded game is prohibited, and hunting regulations will be strictly enforced this year at the Byron Forest Preserve.

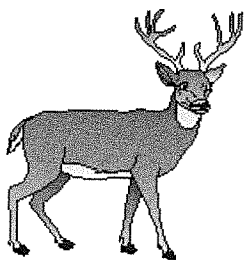
Todd Tucker, Deputy Director and Superintendent of Restoration/Maintenance at the Byron Forest Preserve, said safety is his primary concern during the current and upcoming hunting seasons.

"While the Forest Preserve staff does not wish to discourage or impede the legal harvesting of game animals, we are concerned that an accident could happen," Tucker said. "We have two major trails which are a direct route around the preserve boundary lines. People walk these trails early in the morning and late in the evening. I am concerned that someone could get accidentally injured."

Tucker said no hunting will be tolerated within the boundaries of the Byron Forest Preserve, and no one will be given permission to retrieve wounded game from the Forest Preserve, even though the animal may have been shot off the property.

## Banquet Rooms & Picnic Shelters

The Jarrett Prairie Center and PrairieView Golf Course have banquet facilities available at very reasonable rates, bar service is also available. The rooms could accommodate up to 250 people. Picnic shelters are located near the Jarrett Prairie Center. The shelters are equipped with restrooms, electricity, water, and grills. The North Shelter has a playground and the South Shelter has a fireplace. Call 234-8535 x200 to schedule your next outing with us.



The Illinois Hunting Rules and Regulations Handbook states, "Illinois does not grant the right to trespass for the purpose of retrieving wounded or crippled wildlife. You must secure permission from the landowner or tenant before entering any property."

Tucker said that the regulation will be enforced at the Forest Preserve this year and in the future. "I understand that the Byron Forest Preserve has had some problems in the past with hunting on our grounds, and we don't want that to happen again," he said.

"An Illinois Department of Natural Resources Conservation police officer was here recently to survey the problem area. He said the Forest Preserve, especially the areas where trails go near the property lines, will be one of his most heavily patrolled areas," Tucker said. "I would encourage any hunters who might be tempted by the game here at the Forest Preserve to use their better judgement within or near our boundaries."

## Matt Johnson Funship Awards Program

The Byron Forest Preserve District announces the establishment of the Matt Johnson Funship Awards Program by Dr. Robert and Holly Johnson of Byron. The Funship Awards program is a fund of money the Johnsons have made available for the youth of the Byron community who are in need of financial assistance to participate in the activities of the Byron Forest Preserve District, such as skateboarding, golf, and any other scheduled programs.

Matt, the son of Holly and Robert, was an avid skateboarder and was interested in golf, until his life was cut tragically short at the age of 18 in a car accident in 1997.

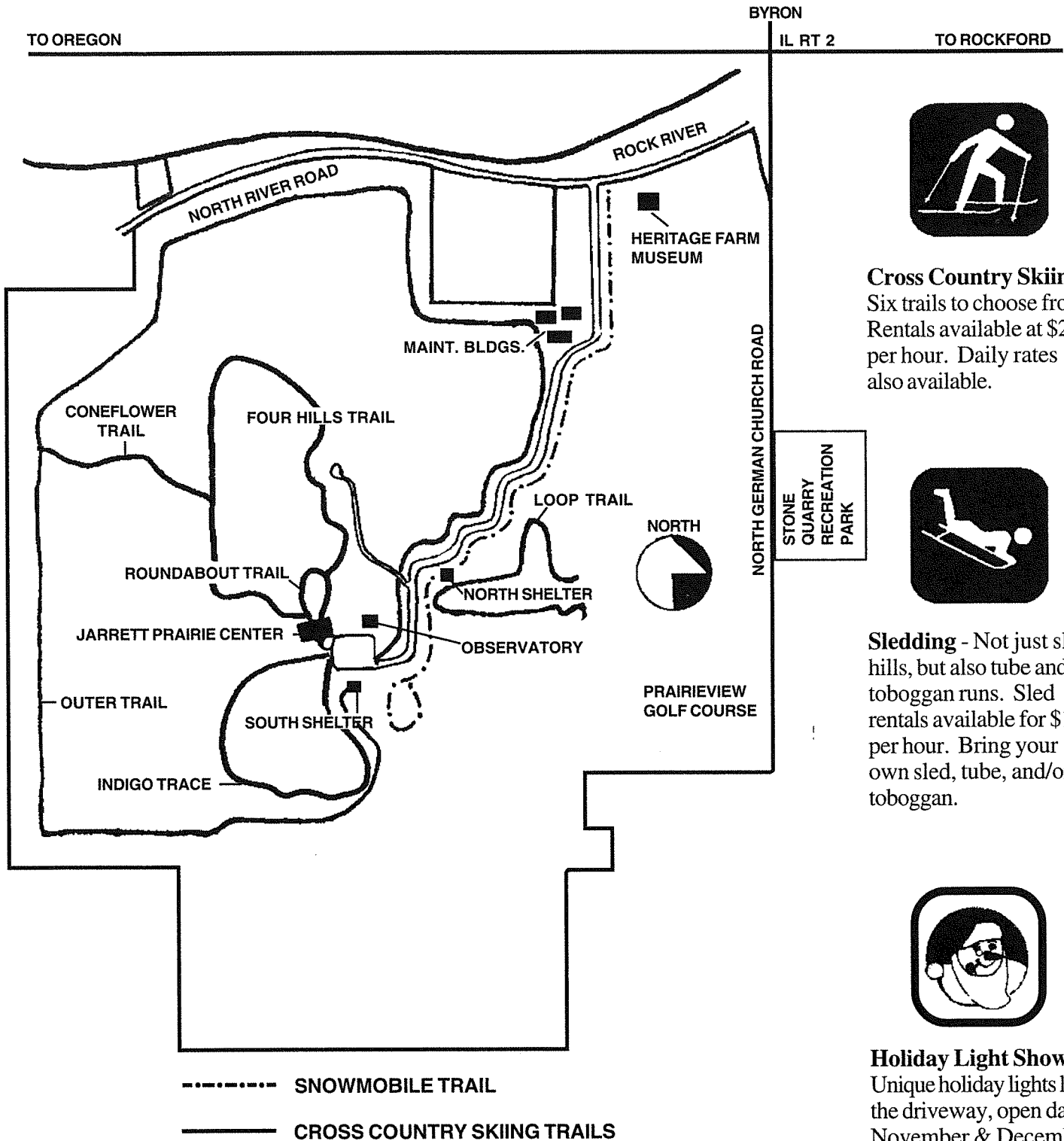
At the March 18, 2003, board meeting, President Brooks thanked the Johnsons for their generous contribution to establish this fund. The Johnsons expressed appreciation to the Board of Commissioners for allowing them to help those children who may not otherwise be able to afford to participate in the District's programs.

The Byron Forest Preserve District Board of Commissioners and staff are grateful for the Johnson's generosity in the creation of the Matt Johnson Funship Awards Program for the children of the Byron area.

To qualify for a Funship Award, the child must be eligible for the school lunch program and reside in the Byron area. The Johnsons encourage parents who feel their child would benefit from this Funship Awards Program to contact the Byron Forest Preserve Director, Ed Clift, at 234-8535 ext. 201 for more information.

# Winter Sports

*Let It Snow!  
Let It Snow!  
Let It Snow!*



**Cross Country Skiing**  
Six trails to choose from. Rentals available at \$2 per hour. Daily rates also available.



**Sledding** - Not just sled hills, but also tube and toboggan runs. Sled rentals available for \$1 per hour. Bring your own sled, tube, and/or toboggan.



**Holiday Light Show** - Unique holiday lights line the driveway, open daily, November & December.

# School Day Off Programs & Safety Classes

## School Day Off Programs

### Mon., Oct. 13, Columbus Day Volo Bog State Park

We'll visit this unique habitat that was developed 12,000 years ago by the glacier. Transportation provided. Call 234-8535 x200 to register.

Where: Meet at Jarrett Prairie Center  
7993 N. River Rd., Byron  
Time: 9am-4pm  
Cost: \$15 per person  
Ages: All  
Min/Max: 3/13  
Instructor: Richie Wolf

### Tues., Nov. 11, Veteran's Day Apple River Canyon State Park

Massive limestone cliffs, deep ravines, and timbered hills make this park a must see. Located in northwestern Illinois. Transportation provided. Call 234-8535 x200 to register.

Where: Meet at Jarrett Prairie Center  
7993 N. River Rd., Byron  
Time: 9am-4pm  
Cost: \$10 per person  
Ages: All  
Min/Max: 3/13  
Instructor: Richie Wolf

### Mon., Dec. 29 - Fri., Jan 2, Holiday Break Winter Camp

We'll explore natural areas in Northern Illinois and our own Forest Preserve. Sign up for one or more days. Call 234-8535 x200 to register.

Where: Jarrett Prairie Center  
7993 N. River Rd., Byron  
Time: 9am-4pm  
Cost: \$20 per day  
Ages: 6-12 years old  
Min/Max: 3/13  
Instructor: Education Staff

## Safety Classes

### Hunter Safety Courses

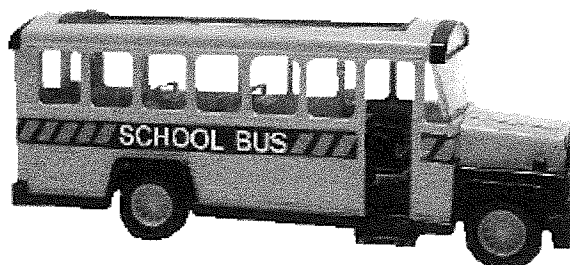
The Byron Forest Preserve is hosting two 10-hour classes for all first-time hunters. Topics covered include first aid, laws, and gun safety. Students must complete all classes and pass a written exam to obtain a certification card. Call 234-8535 x200 to register.

Where: Jarrett Prairie Center  
When: September 8, 10, & 12  
November 3, 5, and 7  
Times: 6-9pm - Mon & Wed  
6-10pm - Fri  
Cost: \$3/student  
Instructor: Richie Wolf & Caleb Hardy

### Boater Safety Course

This 8-hour class covers safety, laws, and first aid. Students must attend all classes and pass a written test to obtain certification. Call 234-8535 x200 to register.

Where: Jarrett Prairie Center  
When: September 22, 24, & 26  
Times: 6-9pm, 6-9pm, & 6-8pm  
Cost: \$3/student  
Ages: 10 and up  
Instructor: Richie Wolf & Jerry Ziebert





# Stone Quarry Recreation Park

6845 German Church Road, Byron - across from PrairieView Golf Course • [www.stonequarrypark.com](http://www.stonequarrypark.com)

## Adventure Miniature Golf Course

This brand new 18-hole miniature golf course is designed with a Stone Quarry Theme, complete with waterfalls, sand traps, and wagon wheels. It's fun for the whole family! The course changes often, so you'll never play the same game twice.

Fall Hours: Saturday, Noon - 6 pm

Sunday, Noon - 6 pm

Fees: Adults \$5

Youths \$3 (18 & under)

*Play a 2nd round & get 50% off!*

**Are you competitive?** Score a 50 or below and get your name on the "WALL OF FAME" board today! Par for the course is 42. It's not as easy as it looks!

## Mini-Golf Tournament

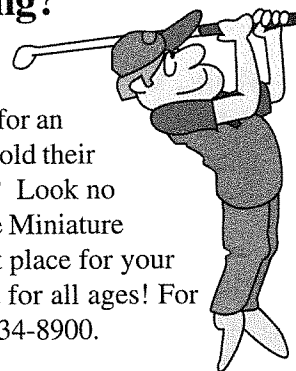
Register today for an upcoming miniature golf tournament! You'll be glad you did! It's fun at any age. Play for fun, or play to win. Upcoming tournaments are posted at the park.

## Name The Course Contest!

Be a part of history! We are looking for just the right name for the new mini-golf course. The Skate Park is named "The Rock." The Community Center will be named "The Barn." What do you think the mini-golf course should be named to fit into the Stone Quarry theme? Deadline for entries is Nov 1, 2003. Submit the winning entry and you could be the lucky winner of a Season Pass for the mini-golf course or the skate park in 2004.

## Planning a Party or Group Outing?

Is your family, organization, or company looking for an exciting place to hold their next get-together? Look no further, Adventure Miniature Golf is the perfect place for your next event. Great for all ages! For information, call 234-8900.



## School Vacation Days

Mini-golf will be open on Sept. 1st, Oct. 13th, and Nov. 11th, (weather & crowd dependent), from Noon-6pm for a special admission price of \$2.50 per person.

## The Rock Skate Park

The Rock Skate Park is an indoor/outdoor facility, with skating areas available, rain or shine. There are beginner, intermediate, as well as advanced areas within the park. The Rock contains half pipes, quarter pipes, pyramids, fun boxes, and round and flat grinding rails. Suitable for all ages.

Fall/Winter Hours: (Rain/Snow/Shine)

Monday-Friday - 4-8pm

Saturday - Noon-8pm

Sunday - Noon-8pm

**Admission Only \$2 for All Day!**

## School Vacation Days

The Rock Skate Park will be open from Noon-8pm on the following dates: Sept. 1st, Oct. 13th, Nov. 11th, 27th, and 28th, Dec. 20th-31st. The park is closed on Thanksgiving Day and Christmas Day.

## 1-Year Anniversary Party!

Free admission all day on Sunday, September 14th! Our way of saying "THANKS" for a great year from your friends at The Rock Skate Park.

## Lock-Ins (for all ages)

Skaters will enjoy spending the first Friday night of each month at The Rock Skate Park! Can you skate or bike all night? Great music! Door prizes! Adult supervisor & attendants on site throughout the night. Pizza and pop included in \$20 fee. To register, call 234-8900. Mark your calendar - Sept. 5th, Oct. 3rd, Nov. 7th, & Dec. 5th.

## Rock Nights

Bands play at The Rock on select Friday and Saturday nights. Stop by the park or call 234-ROCK (7625) to find out the date of the next Rock Night!

## Skate Competition (for all ages)

Try a new trick during a competition! Upcoming competitions are posted at the park. For skateboarding, biking, and in-line skating. Geared for all ages and abilities. For more info, call 234-8900.

## Calling All Bands

Sign your band up today to play at The Rock and receive 10% of all profits made that night. Get the exposure you deserve! Quit jamming in the basement or garage and play at The Rock this weekend. Call 234-8900 for more info.

## Private Lessons

Does your son or daughter want to learn how to skateboard, bike, or use a pair of in-line skates? If so, we'd like to help. Call 234-8900. Lessons are affordable, flexible hours are available.

# PrairieView Golf Course

Illinois Route 72 & German Church Road, Byron • [www.prairieviewgolf.com](http://www.prairieviewgolf.com)

## Fall Junior Golf League

Register your children for PrairieView Golf Course's Fall Junior Golf League. The league is designed for children 4th-8th grade. Children will be placed on one of six teams and divided by both ability level and age. Teams will be competing in a league format. The fall junior league starts Sunday, August 24th and will play on Sunday afternoons for six weeks. Registration fee is \$30 and includes prizes for winning teams and individuals, tee prizes, and a cookout on the last day. For more information on the league or to register your children please call 234-4653 x10.

## Gold Medal Classic Golf Tournament

PrairieView Golf Course is now accepting entries for the 12th Annual Gold Medal Classic Golf Tournament. The tournament will be held on September 6th and 7th at PrairieView Golf Course. The tournament is open to all men age 18 and older. The cost is \$85 to enter (\$55 for PrairieView passholders). Contestants will be flighted after the first round and prizes will be awarded for all flights. There will be over \$3,500 in prizes awarded. For more information or to register for the Gold Medal Classic please call 234-4653 x10.

## Pass & VIP Voucher Sales

It's not too early to think about next golf season. Golf passes and VIP Vouchers will be on sale at a discounted rate starting in Mid-November. If you purchase your season pass before 2004, savings are substantial. Complete prices and VIP packages will be available in the golf shop later in fall. If you have any questions about golf pass sales or VIP Vouchers, please call 234-4653 x10.



Assistant Pro Heath Warner works with junior golf lesson participants.  
Left-Right: Jessica Reber, Thomas Winter, Connor Johnson, and Rachel Brooks.

## Golf lessons

Late summer and early fall are ideal times to improve your golf game. Because summer is winding down and fall is quickly approaching many people stop focusing on golf and start thinking about football, which makes getting a golf lesson very easy. Lessons are still available and the three golf professionals on staff can take care of all your golfing needs. Whether you need a private lesson, series of lessons, a playing lesson, or just a quick tune-up, it's not too late in the season to get started. For a complete list of lesson prices and all the lesson opportunities available, please call the golf shop at 234-4653 x10. Junior and senior rates are also available.

## Juniors Qualify



Ryan McQuality, Matt Wennmaker, Assistant Pro Ryan Jahn, and Luke Lorenz.

Six juniors qualified to play in the Illinois PGA Pro/Junior Championship with Head Golf Pro Steve Murray and Assistant Pro Ryan Jahn. The event was held at Schaumburg Golf Club.

Ryan's team (above) placed 3rd and Steve's team (right) placed 16th out of 30 places.



Pat French, Dan Cameron, Head Golf Pro Steve Murray, and Mark Wilson

HOME TOWN  
ROOTS  
GROW  
DEEP.

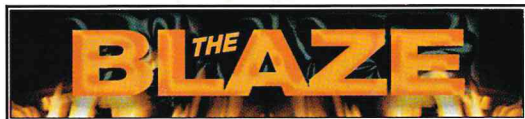
## Why Bank at Byron Bank?

- Locally owned and operated.
- Many years of banking experience have made us a financial institution you can trust.
- We offer all the services of the "big banks", but at lower costs to you. We are very competitive!
- Your savings dollars stay at home to help your neighbor get a new car, improve their home or start a new business.
- Loan decisions are made quickly—right here in Byron.
- Problems with your loan payment? Call us—not an 800 number that transfers you and puts you on hold.
- We donate to many local organizations and projects to help our area be a better place to live.
- We're NOT FOR SALE—we are alive, well and ready to serve ALL your financial needs quickly, efficiently and in complete safety.
- FDIC Insured
- We are here for the long run—we're YOUR INDEPENDENT COMMUNITY BANK CALL TODAY 234-2561.
- [www.byronbank.com](http://www.byronbank.com)



**Byron Bank**

Byron Illinois 61010/Member FDIC



Byron Forest Preserve District  
7993 North River Road  
PO Box 1075  
Byron, IL 61010

PRESORT STANDARD  
US POSTAGE PAID  
BYRON IL 61010  
PERMIT NO 67

POSTAL PATRON  
BYRON IL 61010