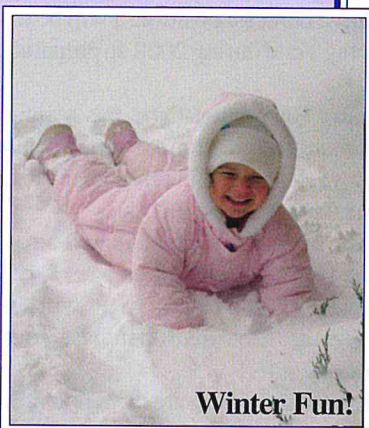


THE BLAZE

Byron Forest Preserve District

2007-08 Winter/Spring Issue

Something especially for you...



Winter Fun!



State Champ Golf Team!



Easter Egg Hunt!



Dances!

Inside this issue...

- Discounted Golf Passes
- Easter Egg Hunt
- Summer Camp
- Maple Syrup Festival
- Ice Fishing
- Scout Badges
- Star Wars Trip
- Kids Concerts

Director's Message

Thank You Sponsors...



Byron Bank

ExelonSM

Nuclear

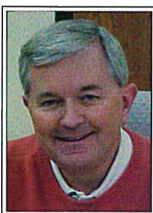
Byron Generating Station

**Dr. Bob & Holly Johnson
Matt Johnson
Scholarship Fund**

**Stephen J. Nardi
Land Donation**

From Executive Director Edward C. Clift...

Dear Citizens,



Our staff has planned some great programs for you and your family this winter season. Our regular winter attractions like the sled hill and cross country skiing will again be available as soon as the snow is available.

Beginning in January, Acting Executive Director Todd Tucker will begin to run the day to day operations at the Forest Preserve as part of our transition plan for the Executive Director position. I will be working on special projects while mentoring Todd during 2008, in preparation for my retirement on December 31, 2008.

Shonnah Poe, General Manager of Stone Quarry Recreation Park, has resigned her position to accept a position in Arizona in a larger parks and recreation system. Shonnah has done a great job during the last four years and we all wish her well in this career move. We will begin the process of hiring a new manager over the next three months.

Stone Quarry Recreation Park will continue to be open this winter and will be offering Middle School Dances, Tap, Ballet, and Jazz Dance Lessons for children ages 3-18, and a variety of other activities. The mini-golf course, skate park, and batting cages will continue to be open along with the playground as weather permits. Be sure to purchase your skate park season pass early. Passes also make great holiday gifts!

Some of our upcoming special events for this winter and spring are the Annual Holiday Light Display through December, the Maple Syrup Festival and Pancake Breakfast sponsored by Byron Kiwanis Club in March, and the Annual Easter Egg Hunt sponsored by the Byron Lions Club also in March.

The Forest Preserve and Prairie View Golf Club want to honor the Byron High School State Championship Golf Team. Prairie View is their home course. See more about the team inside this issue. Also, be sure to purchase your 2008 season golf pass at a discounted rate until December 22, 2007.

If you have any questions or need additional information, please call me at 1-815-234-8535 ext. 201. We look forward to seeing you at the Forest Preserve.

Edward C. Clift
Executive Director

Inside This Issue...

Earthkeepers	4
Golf Team Honored	5
Kids Concerts	6
Maple Syrup Festival	7
Easter Egg Hunt	7
Special Events	8
Preschool	9
Stone Quarry Park	10-11
Outdoor Adventures	12-13
Trips	14
Scout Badges	15, 18
Emerald Ash Borer Alert ..	16
Animals	17
Arts & Crafts	18
Potpourri	19
Winter Sports	20
PrairieView Golf Club	21
Volunteers, Etc.	22
Facilities	23

Stone Quarry Recreation Park

6845 German Church Road, Byron • 815-234-8900 www.stonequarrypark.com

***First Admission to a Middle School Dance
Gets in Free with this Coupon***

Not valid with any other offer. Not redeemable for cash.
Offer valid at 2008 Middle School Dances only.

General Information

Jarrett Prairie Center Hours:

Mon., Wed., Fri.	8am-4:30pm
Tues. & Thurs.	8am-8pm
Saturday	9am-4pm
Sunday	1-4pm

Jarrett Prairie Center is closed:

New Year's Day, January 1
Good Friday, March 21
Easter Sunday, March 23
Memorial Day, May 30

Administrative Offices are closed:

New Year's Day, January 1
President's Day, February 18
Good Friday, March 21
Memorial Day, May 30

Behavior Policy

To ensure safe and enjoyable programs and facilities for all residents, the Byron Forest Preserve District has developed the following Code of Conduct. Participants in programs and those using facilities shall: (1) Show respect to all participants, staff, equipment, supplies and facilities; (2) Refrain from using offensive or profane language; (3) Refrain from aggressive behavior that could cause bodily harm.

The Byron Forest Preserve District reserves the right to dismiss a participant from a program if their behavior or language is deemed inappropriate by staff.

The Byron Forest Preserve District applies a caring and positive approach to discipline. Our staff will work with parents when special accommodations are necessary due to a participant's disability.

The Byron Forest Preserve District reserves the right to dismiss a participant whose behavior endangers the safety of others or causes property damage.

Byron Forest Preserve District
7993 North River Road, P O Box 1075, Byron IL 61010
815-234-8535 • byronforestpreserve.com

Board Meetings

The Byron Forest Preserve District Board of Commissioners meetings are held on the third Monday of each month at 7 pm at the Jarrett Prairie Center, 7993 North River Road, Byron.

Board of Commissioners

Jeff Huber President
Sandy Brooks Vice President
Dave Flowers Secretary
Jeff Ludwig Treasurer
Dave Breen Commissioner

Who To Contact

General inquiries

815-234-8535 ext. 200

linda@byronforestpreserve.com

Administrative Staff

Edward Clift, Executive Director
edclift@byronforestpreserve.com
815-234-8535 ext. 201

Todd Tucker, Deputy Director & Restoration Superintendent
todd@byronforestpreserve.com
815-234-8535 ext. 222

Richie Wolf, Education Supt.
richie@byronforestpreserve.com
815-234-8535 ext. 217

General Manager
Stone Quarry Recreation Park
info@stonequarrypark.com
815-234-8900

Steve Murray, Manager
PrairieView Golf Club
pvgolfpro@hotmail.com
815-234-4653 ext. 12

Robin Davis, Finance & Human Resources Superintendent
robin@byronforestpreserve.com
815-234-8535 ext. 204

Steve Storz, Maintenance Supt.
PrairieView Golf Club
stevestorz1@hotmail.com
815-234-8535 ext. 208

Michelle Lipps
Blaze Editor, Design, & Layout
michelle@byronforestpreserve.com
815-234-8535 ext. 224

Photography Policy

Photographs and videos are periodically taken of participants during programs, special events, trips, or at the parks.

Please be aware that these photographs may be used for Forest Preserve District publications and/or other media.

Our Mission



**BYRON
FOREST
PRESERVE
DISTRICT**

Mission Statement

Preservation ~ Education ~ Recreation

The mission of the Byron Forest Preserve District is to provide for Preservation of Open Space/Natural Resources, provide Education concerning our Natural Environment/Heritage, provide Recreational Opportunities and Enterprise Operations that are consistent with our Agency goals.

**Attention
Home Schoolers!**

Earthkeepers Program

International Institute for Earth Education

Do you want to be an Earthkeeper? We should all want to be an Earthkeeper!

This great program is the epitome of Earth Education. Kids will spend three full days going through activities designed to teach concepts such as cycling of materials, energy flow, change over time, and the interrelationships between living things. We also spend time on "experience" activities, which include an earthwalk using our senses, journaling, and a long hike through the woods following a map to find

landmarks, natural objects, and secret messages.

During the program, participants will earn two keys (real keys that work -- theirs to keep) for "Knowledge" and "Experience". Participants will also learn how to earn keys for "Yourself" and "Sharing" (the keys are marked with letters that spell out "KEYS") by pledging to do things that are good for the earth and to share some of the activities with others.

Parents or home school coordinators check in with the students once a week to ensure they are following their

pledges (such as remembering to turn off lights around the house that aren't being used) and on April 19th, we'll hold a special ceremony to hand out the third and fourth keys.

We have been running this program for years for area schools, and thought it was time to offer it to students who haven't had a chance to participate. We spend much of the time outdoors, so please dress for the weather. Parents are welcome to attend for free.

For more information, please call Janet at (815) 234-8535 x232.

Where: Jarrett Prairie Center
When: Wednesday, Thursday, & Friday, March 24, 25, & 26
Time: 9 am - 3 pm
Cost: \$30/student (for all three days, parents are free!)
Ages: 9-13 years old
Min/Max: 5 / 20
Instructor: Janet Dahlberg
Register by Friday, March 14, 2008.



Congratulations, State Champs!

The Board of Commissioners and Staff of the Byron Forest Preserve and PrairieView Golf Club are very proud of the 2007 Byron High School Golf Team who recently won the IHSA Class 1A State Golf Championship! Listed below are the team's accomplishments in 2007. Also noted is the history of the Byron High School Golf Team since its beginning in 1998.

Varsity Scores

Tourney Summary:

Byron Tiger Shoot Out (313)	1st Place
Lena Invite (483)	2nd Place
Brad Fowler Invite (324)	1st Place (Class A)
Salley Wessels Classic (314)	1st Place
Sterling Invitational (315)	7th Place
B. N. C. Tournament (325)	2nd Place

IHSA Level:

Regional Tournament (312)	1st Place
Sectional Tournament (311)	2nd Place
State Championship (616)	1st Place!!

Conference Record 10 - 0

(Conference Champions - point total 20)

Overall Record 12 - 1

Varsity Team History To Date:

Dual Match Record 133 Wins and 12 Defeats
Ninth Big Northern Conference Championship
Eighth Consecutive Regional Championship
Ninth Consecutive Sectional Appearance
Eighth State Appearance in the last nine years
Seventh Top Ten Finishes or Better on the State Level
First Golf Team State Championship!



IHSA 2007 State Golf Champions Class 1A

Front row (l-r):

Scott Adams, Jake Schertz, Jim Feimster, Charlie Lukan

Back row (l-r):

Marc Smith, Michael Ashworth, Zach Dill, Coach Mark Cameron, Garrett Gustafson, Zach Szuminski

Free Kids Concerts

FUN! FUN! FUN!

Jarrett Prairie Center • 3 pm

Sponsored by Exelon

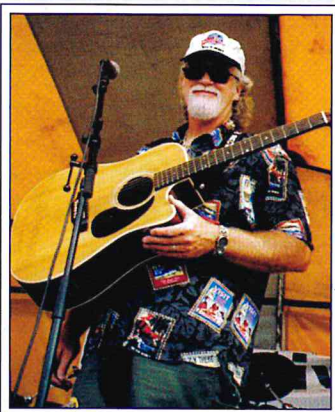


Billy the Balloon Guy January 12th

Meet Billy and see his amazing balloon art talent. Get a free balloon to take home!

Popeye and Sweet Pea February 9th

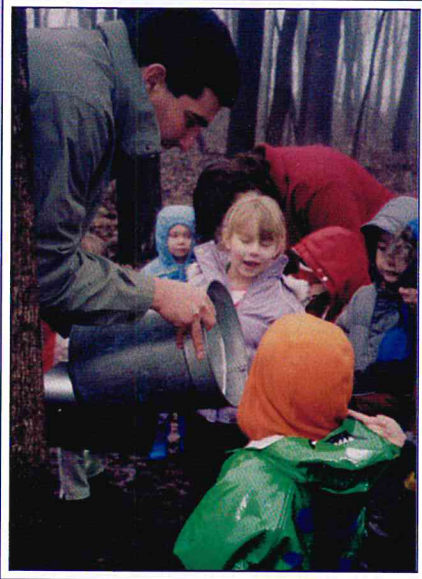
Come and see this awesome dog act. They are a returning favorite!



Soul Compass March 8th

Enjoy guitar music and singing as Phil McMillen entertains with a variety of children's songs.

Maple Syrup Festival



Relax and enjoy this returning favorite. We'll have a pancake breakfast, maple tree tapping, hay rides, kid's crafts, and more. Co-sponsored by the Byron Kiwanis Club. Free admission. Small fee for breakfast. Get advance sale tickets at the Jarrett Prairie Center. For more information, call 815-234-8535 ext. 200.

Saturday, March 15, 2008
7 am - Noon

Jarrett Prairie Center
7993 North River Road ~ Byron

Easter Egg Hunt



Hop on over to Stone Quarry Recreation Park for our Annual Easter Egg Hunt! There will be lots of candy and prizes for kids in preschool through 4th grade. This event is co-sponsored by the Byron Lions Club. Stop by Stone Quarry any time after March 1st to enter your guess for the number of jelly beans we have in the jar. One winner will get to take home the World's Largest Easter Basket full of toys, games, and prizes! The winner will be announced following the Easter Egg Hunt (2007 winner pictured at left). For more information, call 815-234-8900.

Saturday, March 22, 2008
11am SHARP!

Stone Quarry Recreation Park
6845 German Church Road ~ Byron

Special Events

January
February
March
April

Summer Camp 2008

***Sign Up Now and
Save Money!***



***We're offering an early
registration incentive.
See the insert
for more details.***



Mother/Daughter PJ Party

Ready for another fashion show ladies? Dress comfortably in your PJ's and slippers and come to a girls night "in". We'll be watching a chick flick (of course) while we prepare ourselves for a night on the red carpet! Girls, this is your chance to do Mom's hair, makeup, and nails! And, of course, we'll take time for dessert! Please bring your own beauty supplies with you.

Where: Stone Quarry Park
When: Saturday, **February 2**
Time: 6-7:30pm
Cost: \$5 / couple
\$2 / add'l daughter
Ages: All
Min/Max: 10 / 30
Register by noon on January 30.



Daddy/Daughter Date Night

Dads...looking to get out of the house to do something with your daughter? Join us for a post-Valentine's Day Date featuring games, prizes, pizza, and ice cream sundaes!

Where: Stone Quarry Park
When: Saturday, **February 16**
Time: 6-7:30pm
Cost: \$8 / couple
\$3 / add'l daughter
Ages: All
Min/Max: 5 / 15 couples
Register by noon on Feb. 7.



Leisure Kite Fly

Celebrate National Kite Month and bring your kite to Stone Quarry Recreation Park for some high-flying fun! Prizes for this "Fun Fly" event will be given to the Most Colorful Kite, Biggest Kite, Smallest Kite, Longest Kite, Youngest Kite Flier, Oldest Kite Flier, Best Homemade Kite, and Best Kite Trick.

Where: Stone Quarry
Rec. Park
When: Sat., **April 19**
Time: 1 - 4 pm
Cost: \$2 / kite entry
Ages: All
Min/Max: 3 / 15
**Register by noon
on April 16.**



Preschool

Get your kids ready for kindergarten by enrolling them in our structured preschool classes. The Tuesday/Thursday classes are geared towards 3-year-olds and younger 4-year-olds. The Monday/Wednesday/Friday classes are geared towards older 4-year-olds and younger 5-year-olds. Children must be at least 4 years old to attend the three-day class. They must be at least 3 years old to attend the two-day class. You may register your child at anytime throughout the year if your child's birthday is later in the year. Please call 815-234-8535 ext. 200 for more information.

Where:	Jarrett Prairie Center	Ages:	3 - 5 years
When:	Mon/Wed/Fri or Tues/Thurs	Min.:	6 / 20 - M-W-F
Time:	9-11:30am or 1-3:30 pm	Max.:	6 / 16 - Tu-Th
Cost:	\$80/month for Mon/Wed/Fri or \$65/month for Tues/Thurs	Registration is ongoing throughout the year.	

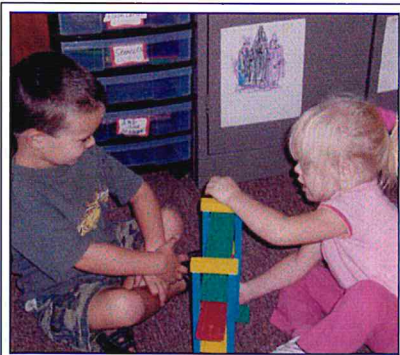


Adventure Club

This summer program is geared toward preschool age children. Each two-week session has a theme, and will include games, crafts, stories and outdoor play. Children are provided a fun, safe, and comfortable environment with our caring staff. The last day of each session will be spent at Stone Quarry Recreation Park for play time at the splash and play water area playground. Call 815-234-8535 ext. 200 to register today!

Session #1 - June 9 - 19 - *Trees are Terrific!*
 Session #2 - June 23 - July 3 - *The Planets*
 Session #3 - July 7 - 17 - *Insects*
 Session #4 - July 21-31 - *Fish*

Cost: \$35 per session
 When: Monday & Wednesday or
 Tuesday & Thursday
 Time: 9-11 am or 1-3 pm
 Ages: 3-6 year olds
 Min/Max: 6 / 14



Fall 2008 Preschool

~Registration Dates~

February 1-8
 Current students and siblings

February 11-15
 Byron residents

February 18
 Open registration

~New Rule~

Immunization records will be required for all preschool students enrolling in the Fall 2008 session.

~New Fees~

Monday / Wednesday / Friday
 \$85 / month

Tuesday / Thursday
 \$70 / month

~Age Restrictions~

Children must be at least 4 years old by September 1, 2008, to enroll in the three-day class.

Children must be at least 3 years old by September 1, 2008, to enroll in the two-day class.

All students must be potty trained before being enrolled in preschool.

Stone Quarry Park

January
February
March
April

Stone Quarry Park Hours

January 7 - March 31

Monday - 4-7pm

Saturday - 11am-5pm

Closed March 21st & 23rd.

April 1 - 30

Monday - 4-7pm

Saturday - 11am-7pm

Sunday - Noon-5pm

Christmas Break

Dec. 28-30 & Jan. 4-6 -

11am-5pm

Spring Break

March 24, 26, 28-29 -

11am-5pm

Park hours are subject to change due to weather related conditions or low attendance.

*Check us out
at MySpace.com/stonequarrypark!*

Midnight Madness

Join us for late night fun in the park! Stone Quarry will be open until midnight. Admission includes access to the skate park. The concession stand will be open to purchase food and beverages. Registration required!

Where: Stone Quarry Park

When: 8 pm - Midnight

Dates: Saturdays

January 19

February 16

March 15

April 19

Cost: \$5 / person

Ages: All

Min./Max.: 15 / 50

Register by noon on the
Wednesday before the program.



Garage Band Shows

to be featured at Midnight Madness

Attention all middle school and high school bands...

Looking to get out of your basement or garage to play at a venue in front of an audience to get the recognition you deserve? Call and set up a night for your band to be a HEADLINER at one of our Midnight Madness dates! Dates and times will be assigned on a first come, first served basis. Call 1-815-234-8900 for more information.

Middle School Dances

You can dance, play arcade games, shoot pool, have a slush, or just hang out! Mark these 2008 dates on your calendar and join your friends, Nick and Ryan from Sound Productions, and the Stone Quarry crew for some fun! Be sure to listen to the BMS announcements and visit the Stone Quarry My Space page for special giveaways!

Where: Stone Quarry Park

When: Fridays, January 11

February 8 & 22, March 28

April 11 & 25, May 9

Time: 7 - 10 pm

Cost: \$5 / person

Ages: Middle School

**Chaperones needed,
please call 815-234-8900!**



Kids Zone a.k.a. Parents Night Out

Parents, drop your kids off with us to eat, have fun, and win prizes while you get a quiet night out!

Where: Stone Quarry Park

When: Jan. 12, Feb. 9

Mar. 8, Apr. 12

Time: 5:30 - 9:30 pm

Cost: \$10 / person

Ages: First-Fifth Grade

Min/Max: 10 / 30

Register by noon on the
Wednesday before the program.

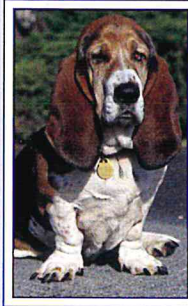
Stone Quarry Park

Dog Obedience Classes

River View Dog Training and Stone Quarry Recreation Park are proud to offer beginner and intermediate dog classes. Classes are open to dogs of all ages and will focus on obedience, good manners, socializations, and address any dog problems that owners may be experiencing at home.



Where: Stone Quarry Park
When: Tuesdays
Beginning January 15
Time: Obedience I - 6 pm
Obedience II - 6:45 pm
Cost: \$65 / 8-week session
To register, call Mary Beth Overmyer
at 1-815-234-2360.



Need more room...?

Do you need more space for that next party? Tired of cleaning the house before and after your event?

Don't worry, host your next party at Stone Quarry Recreation Park. Stone Quarry has ample space for your next graduation party, birthday party or family reunion, at very reasonable rates.

Weekend dates for summer are filling up fast so call us today! Reserve the party room or the picnic shelter for up to 4 hours for only \$25 (an additional \$75 must be spent at the park, otherwise a \$2 per person rental fee applies to party room rentals only).

Stone Quarry also offers birthday party packages, which include pizza, pop, and use of the party room. Rent a room from us and receive discounts for the batting cages, miniature golf, and the skate park during your rental.

We also have special rates for corporate outings and company picnics. You can reserve the entire park or individual areas for your private use only.

Please call 1-815-234-8900 for more information or visit our website at www.stonequarrypark.com.

In the Know...

If you would like to be in the know about what is going on at the Forest Preserve, please call us at 1-815-234-8535 ext. 200 with your mailing address and we'll send you information about our upcoming programs.

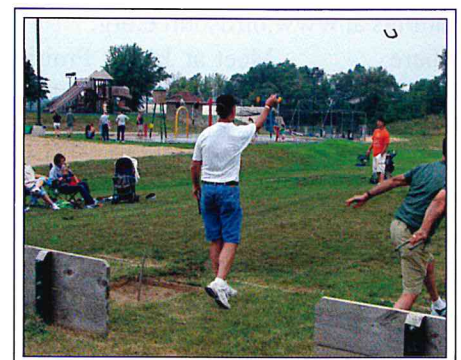
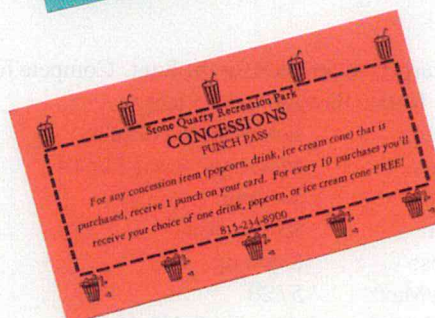
Introducing Punch Cards At Stone Quarry!



Stone Quarry now offers punch cards for our frequent visitors.

We offer a punch card for skate park, mini-golf, and batting cage use and one for concession items.

Stop by Stone Quarry to get your punch card and begin your savings!



Cross Country Skiing Workshop

All equipment is provided for this fun program!

Where: Jarrett Prairie Center
When: Saturday, January 5
Time: 10 am - Noon
Cost: \$5 / person
Ages: All
Min/Max: 5 / 20

Register by noon on January 4.

**Hunter Education Classes**

This 10-hour class covers first aid, wildlife management, and more. You must pass a written test for certification.

Where: Jarrett Prairie Center
When: Monday, Wednesday, & Friday
February 11, 13, 15
March 31 & April 2, 4
Time: 6 - 9 pm on Mondays & Wednesdays
6 - 10 pm on Fridays
Cost: Free
Ages: All
Min/Max: 5 / 80

Register by noon on February 8 and March 28.

Ice Fishing

Bring your own equipment for this unique outing at the golf course pond! Call ahead to confirm ice conditions.



Where: Meet at Jarrett Prairie Center
When: Saturdays, February 9 or 23
Time: 7 - 10 am
Cost: \$5 / person (under 5 free)
Ages: All
Min/Max: 10 / 60

Register by noon on Feb. 8 and 22.

Great Backyard Bird Count

Let's partake in this national event. Then, we'll record our findings at www.birdsource.org.

Where: Meet at Jarrett Prairie Center
When: Sunday, February 17
Time: 8 - 10 am
Cost: Free
Ages: All
Min/Max: 5 / none

Register by noon on February 15.

Beekeeping Workshops

Learn techniques and tools of the trade. Bring your bee suits!

Ask about our mentoring program.

Where: Jarrett Prairie Center
When: Sundays, Jan. 13, Feb. 10, Mar. 9, Apr. 13
Time: 2 - 4 pm
Cost: \$2 / person
Ages: 3 and up
Min/Max: 5 / 25

Wildflower Walk

See the spring flowers as they beautify the woodlands.

Where: Meet at the Maintenance Center
When: Saturday, April 19
Time: 10 am
Cost: \$2 / person
Ages: All
Min/Max: 5 / none

Register by noon on April 18.

Boating Safety Class

This 8-hour class will provide needed certification for operating a boat safely.

Where: Jarrett Prairie Center
When: Monday & Wednesday, March 10 & 12
Time: 5 - 9 pm
Cost: Free
Ages: All
Min/Max: 5 / 30

Register by noon on March 7.

**Pond Fishing**

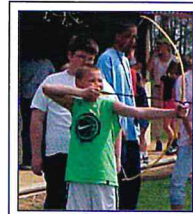
We'll take you to a pond for some great fishing. Bring your own equipment.

Where: Meet at the Jarrett Prairie Center
When: Saturdays, April 5 or 12
Time: 7 - 9 am
Cost: \$5 / person (under 5 free)
Ages: 6 and up
Min/Max: 5 / none

Register by noon on April 4 & 11.

3D Archery

Use our new 3D animal targets to practice for the hunt. Compete for a trophy or just for fun. Rotate through our 13 targets.



Where: Jarrett Prairie Center
When: Mondays, April 7 or 14
Time: 5 - 7 pm
Cost: \$5 / person
Ages: 8 and up
Min/Max: 5 / 20

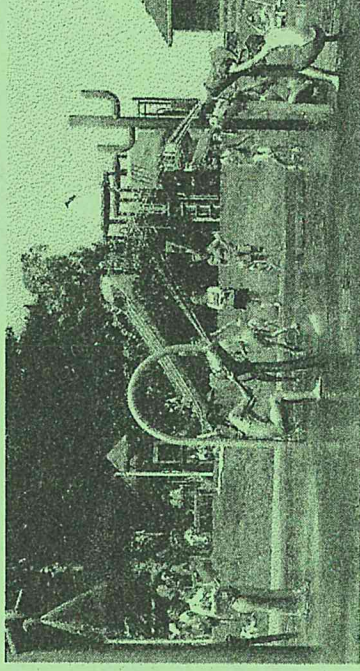
Register by noon on April 4 & 11.

Experience the Excitement

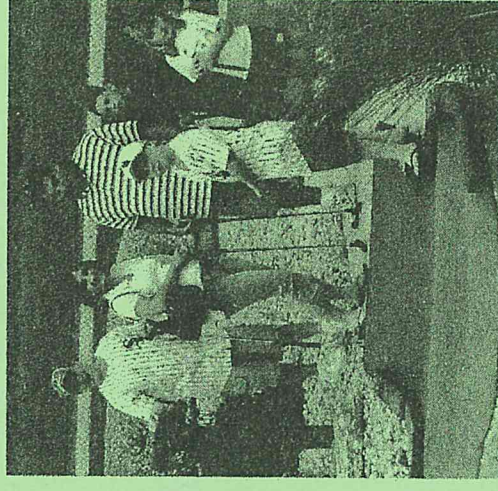
At Stone Quarry Recreation Park!

6845 N. German Church Rd. Byron, IL ♦ 815-234-8900 ♦ www.stonequarrypark.com

- Batting Cages
- Miniature Golf
- Water Splash Park
- Horse Shoe Pits
- Basketball Courts
- Skate Park
- Sand Volleyball
- Playground
- Arcade Games

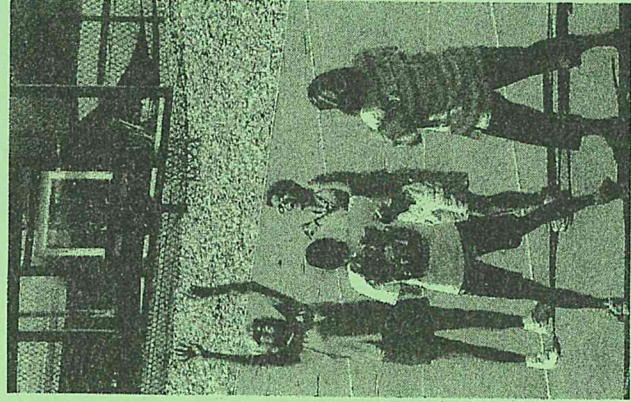


A GREAT PLACE FOR FAMILY FUN!



♦♦♦ It's never too early to start thinking about summer & booking your next event! ♦♦♦

- Graduation Parties
- Family Reunions
- Summer Camp Trips
- Church Youth Groups, and more!
- Birthday Parties
- Corporate Picnics
- Scout Trips



Super SUMMER Savings

FAMILY NIGHT FRIDAYS Buy 3 rounds mini-golf, 4th is FREE!

TEEN DATE NIGHT-SATURDAYS Buy 1, get 1 FREE mini-golf & ice cream cone

SENIOR CITIZEN SUNDAYS Discounts for grandparents & grandchildren!



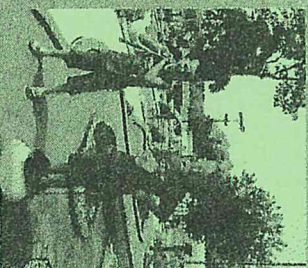
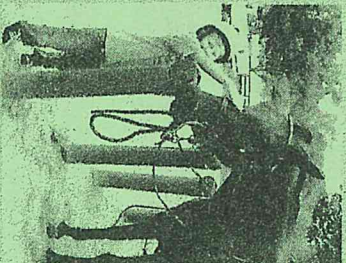
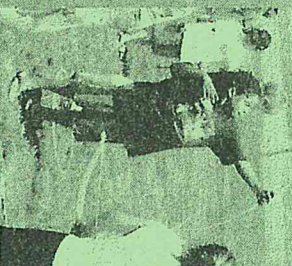
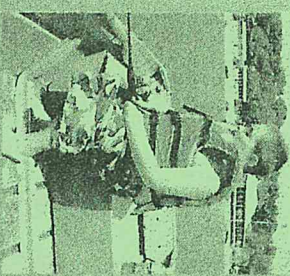
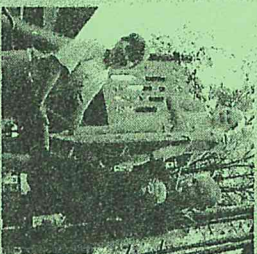
Summer

All field trip fees are included in the weekly rate!

Field trips for 2008:

Lake Louise
Brookfield Zoo
Wild West Town
CoCo Keys Resort
Carlson Ice Arena
The Field Museum
Mississippi River Museum
Splashland Aquatic Center
White Pines Roller Rink
Sci Tech Museum
Splash Country

Fees also include free use of Stone Quarry's facilities after hours and on the weekend while your child is enrolled in camp.



Day Camp

Early registration discounts:

register in January/February:
\$80 per week; \$70/sibling
register March 1-May 15:
\$90/week; \$80 sibling
register after May 15:
\$100 week; \$90 sibling

Register and pay for a minimum of two weeks to lock in your rate for the entire summer.

Daily rates:
\$25/day plus any field trip fees

Camp runs:

June 9 - August 22

Times:

9 am - 4 pm
latchkey 7 am 6 pm \$10/week \$10/week

REGISTER BY MAIL, BY PHONE OR FAX (CREDIT CARD REQUIRED), OR IN PERSON. PHONE 234-8535/FAX 234-8635

1. Payment: Cash Check Credit card

2. Cardholder Number

3. Expiration Date_____

[illegible]

City, State, Zip _____

4. Authorized Signature _____

Home Phone _____ Emer. Phone _____

5. Drivers License # (If writing a check) _____

E-mail address _____

WAIVER AND RELEASE OF ALL CLAIMS

In the event of any emergency, I authorize the District's officials to secure from any licensed hospital, physician, and/or medical personnel any treatment deemed necessary for me or my minor child/ward immediate care and agree that I will be responsible for payment of any and all medical services rendered.

Date _____

Signature of participant (non-adult)

Date _____

BYRON FOREST PRESERVE
MEDICAL FORM
(Please Print All Information)

Registrant's Name: Last_____First_____Nickname_____

If Minor, Guardians Phone #s:

1. _____ Relationship_____

2. _____ Relationship_____

Emergency Phone #_____Name & Relationship_____

1. Does the registrant have any medical condition which could be aggravated by participation in outdoor activities? YES____ NO____
IF YES, please explain_____
2. Does the registrant have any allergies? YES____ NO____
IF YES, please explain_____
3. Does the registrant have any physical conditions that we should be aware of for participation in this program? YES____ NO____
IF YES, please explain_____
4. Physician's Name_____Phone_____
5. Medical Insurance Co. _____Insurance #_____

PICK-UP AUTHORIZATION FORM

For minors in our programs, ONLY authorized persons stipulated on this form may pick up the minor. Verbal messages from the minor are not acceptable; written authorization is acceptable.


Name_____Phone_____Relationship_____

Name_____Phone_____Relationship_____

Name_____Phone_____Relationship_____

Outdoor Adventures

Evening Snow Hike

 The cold winter woods are very beautiful at night. We'll take a stroll through the forest to listen for owls and look for other animals under a nearly full moon. Hot chocolate provided after the hike.

Where: Meet at Jarrett Prairie Center
When: Friday, January 18
Time: 7 - 8 pm
Cost: \$1 / person
Ages: 7 - 14 (parents may join us for free)
Min/Max: 5 / 25

Register by noon on January 16.

Know Your Snow

We'll be outside most of the time, playing in the snow! We will build snow shelters (an igloo and a quinzhee), cross-country ski, look for animal tracks, and sled down the big hill. Wear boots, snow pants, and warm clothes! We'll also warm up between activities with hot chocolate.

Where: Jarrett Prairie Center
When: Saturday, February 2
Time: Noon - 3 pm
Cost: \$4 / person
Ages: 7 - 14
Min/Max: 5 / 20

Register by noon on January 30.

Birdseed Snow Angels

Sometimes our feathered friends need a helping hand in the winter. We'll make snow angel mosaics near the woods decorated with different colors of birdseed. Then, we'll take pictures to remember them by and head inside to make bird feeders to take home. Finally, we'll sneak outside again to see if we can get some photos of birds eating our artwork!

Where: Jarrett Prairie Center
When: Saturday, February 9
Time: 10 am - Noon
Cost: \$3 / person
Ages: 6 - 12
Min/Max: 5 / 20

Register by noon on February 7.

Rare Bird Alert Hotline

The Byron Forest Preserve is hosting a "Rare Bird Alert" hotline. Call 1-815-234-8535 ext. 203 to hear updated reports or to leave a message about where, when, what, and how to spot a rarity that you've found.

Evening Cross Country Skiing

The barely waning moon will light our way as we ski across the prairie. Beginners to experienced skiers welcome. We provide skis and hot chocolate.

Where: Jarrett Prairie Center
When: Friday, February 22
Time: 7 - 9 pm
Cost: \$2 / person (or \$5 / family)
Ages: All
Min/Max: 5 / 25

Register by noon on February 20.

Spring Scavenger Hunt

Spring will be officially here at this time but what does that mean? We'll explore along the trails and in the woods to discover the first signs that winter is over. We will use a map and compass, binoculars, and magnifying glasses to find and examine interesting things.

Where: Jarrett Prairie Center
When: Saturday, March 22
Time: 10 am - Noon
Cost: \$2 / person
Ages: 6 - 12 (parents may join us for free)
Min/Max: 5 / 25

Register by noon on March 19.

Arbor Day Party

Join us for a celebration of Arbor Day. There will be crafts and games. At the end of the program, you may also take home a tree sapling to plant in your yard!

Where: Jarrett Prairie Center
When: Saturday, April 26
Time: 11 am - Noon
Cost: \$4 / family
Ages: All
Min/Max: 5 / 25

Register by noon on April 23.

Constellations of Spring

We'll learn about some spring constellations while enjoying some hot chocolate.

Where: Weiskopf Observatory
When: Friday, March 14
Time: 7:30 pm
Cost: \$2 / person
Ages: Families
Min/Max: 5 / none

Register by noon on March 13.



Trips

January
February
March
April

Day Trips

Star Wars Exhibit - Museum of Science and Industry

Join us as we travel to Chicago to see this special exhibit & museum. Fee includes admission, parking, and OmniMax Theater.

Where: Meet at the Jarrett Prairie Center
When: Wed., January 2
Time: 8 am - 6 pm
Cost: \$36 / adult
\$28 / child
Ages: All
Min/Max: 5 / 14
Register by noon on Dec. 31.

A Day at Cabela's

Join us for a day of shopping at this 185,000-square-foot retail showroom. It's an educational and entertaining attraction, featuring decor of museum-quality animal displays, huge aquariums, and trophy animals.



Where: Meet at the Jarrett Prairie Center
When: Sun., **Mar. 2 & 30**
Time: 9 am - 5 pm
Cost: \$5 / person
Ages: All
Min/Max: 5 / 14
Register by noon on Feb. 29 & Mar. 28.

Overnight Trips

Museums Weekend

We're heading to Springfield, Illinois to tour the Lincoln Presidential Museum and the Illinois State Museum. Both are first class facilities. Fee includes admission, hotel accommodations, and transportation.

Where: Meet at the Jarrett Prairie Center
When: Friday-Sunday, **February 1 - 3**
Time: Depart at 10 am.
Cost: \$150 / person or \$250 / couple
Ages: Adults
Min/Max: 5 / 14
Register by noon on January 25.

Connor Prairie

We'll take you to this one of a kind historical village in Indianapolis. You'll see costumed interpreters explain life at a prairie town, indian camp, and encounter the past at one of the nation's most exciting outdoor history museums!

Where: Meet at the Jarrett Prairie Center
When: Friday-Sunday, **April 18-20**
Time: Depart at 9 am.
Cost: \$210 / person or \$300 / couple
Ages: Adults
Min/Max: 5 / 14
Register by noon on April 4.

~ ~ Big Buck Contest ~ ~

Show your deer head for a chance to win a plaque for the most impressive or most unusual mount. You may also show your mounts just for fun. All deer mounts must be turned in by January 31, 2008. There will be a reception held for the plaque presentations.

Where: Jarrett Prairie Center
When: February 4-29
Time: Regular Public Hours
Cost: \$5/deer to compete or free just to show

Last year's winner, Ryan Johnson, is pictured at right with the winning deer mount.



Badge Workshops

Brownies...

Brownie Try-It - *Make It, Eat It*

We'll prepare recipes to eat for dinner, make a recipe book, and plant our own seeds in pots to take home.



Where: Jarrett Prairie Center
When: Thursday, January 17
Time: 4:30 - 7 pm
Cost: \$8/brownie (includes dinner)
Min/Max: 5 / 20
Register by noon on January 14.

Brownie Try-It - *Senses*

Explore the senses to earn this badge! Experience different smells, tastes, and sounds, make an optical illusion, and learn how to spell your name in sign language. We will be indoors.

Where: Jarrett Prairie Center
When: Tuesday, January 22
Time: 5 - 7 pm
Cost: \$5 / brownie
Min/Max: 5 / 20

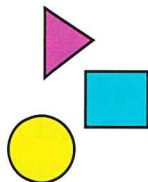
Register by noon on January 18.

Brownie Try-It - *Numbers and Shapes*

We'll learn about origami and tangrams, make a jigsaw puzzle, and take a short walk outside to look at shapes in nature. Dress to be outdoors for about 20 minutes.

Where: Jarrett Prairie Center
When: Tuesday, February 12
Time: 5 - 7 pm
Cost: \$5 / brownie
Min/Max: 5 / 20

Register by noon on February 8.



Brownie Try-It - *Space Explorer*

We'll spend some time in our observatory learning about stars, constellations, and planets. There will also be plenty to see through our telescope.

Where: Jarrett Prairie Center
When: Thursday, March 20
Time: 6 - 8 pm
Cost: \$5 / brownie
Min/Max: 5 / 20

Register by noon on March 17.



Brownie Try-It - *Eco Explorer*

We'll hike outdoors to learn about habitats and the animals that live in the woods and prairie. We'll also put together a few bat houses to place around the Forest Preserve.

Where: Jarrett Prairie Center
When: Tuesday, April 8
Time: 5 - 7 pm
Cost: \$5 / brownie
Min/Max: 5 / 20

Register by noon on April 4.

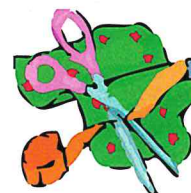
Junior Girl Scouts...

Junior Girl Scout Badge - *Yarn and Fabric Arts*

We'll tie-dye and embroider fabric, learn about knots and macrame, and end up with several beautiful pieces to take home. All materials provided.

Where: Jarrett Prairie Center
When: Saturday, February 9
Time: 1 - 4 pm
Cost: \$5 / scout
Min/Max: 5 / 20

Register by noon on February 6.



Junior Girl Scout Badge - *Humans and Habitats*

We'll learn about different cultures, including the people who used to live in this area. Then, we'll mix and bake three different kinds of bread (and eat it, of course!). Plan your day and participate in both badges on this day off from school. You may even bring lunches.

Where: Jarrett Prairie Center
When: Monday, February 18 (President's Day)
Time: 9 am - Noon
Cost: \$5 / scout
Min/Max: 5 / 25

Register by noon on February 14.

Get Two Badges
on the Same Day!

Junior Girl Scout Badge - *Drawing and Painting*

We will explore various artistic mediums to earn this badge. We'll also work on a large mural and display some of our finished work in the museum for the public to view and adore.

Where: Jarrett Prairie Center
When: Monday, February 18 (President's Day)
Time: 12:30 - 4 pm
Cost: \$5 / scout
Min/Max: 5 / 20

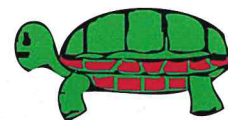
Register by noon on February 14.

Junior Girl Scout Badge - *Wildlife*

We'll learn about birds and take a hike with binoculars to spot them, observe and draw the live turtles and snakes in the museum, and learn how to identify and treat poison ivy.

Where: Jarrett Prairie Center
When: Monday, April 14
Time: 5 - 7:30 pm
Cost: \$5 / scout
Min/Max: 5 / 20

Register by noon on April 11.



Need a different date or badge?

If your scout group needs a different badge or workshop date, please call us to schedule another workshop. A minimum number is required. Call 1-815-234-8535 ext. 217.



Invasive Species: The Emerald Ash Borer in Illinois

*By Russell Brunner,
Superintendent of Restoration and Maintenance*

The emerald ash borer (EAB) is a non-native beetle that was first identified in North America in 2002. The emerald ash borer (*Agilus planipennis*) is native to eastern Asia and is thought to have been brought to North America in lumber, wood shavings, or wood packaging. This exotic pest is moving in all directions from its first known population in Michigan. There have now been populations identified in Ohio, Indiana, Pennsylvania, Maryland, and in the summer of 2006, Illinois. This insect is killing 100% of ash trees once infestation occurs, and thus poses a strong threat to eliminate all ash trees throughout the eastern United States. The EAB has been located in several Chicago area counties and is spreading westward. I am unaware of any verified records in Ogle County but their appearance is likely in the next few years.

This insect is killing 100% of ash trees once infestation occurs...

This beetle can have a 1-, 2-, or 3-year life cycle. Adult EABs emerge from the ash trees through "D" shaped exit holes in May or June. The females then lay eggs on the bark. Two weeks later, the eggs hatch and the tiny larvae (pictured below) burrow back into the tree. The larvae feed on the living part of the tree just under the bark, disrupting nutrient flow and killing the tree in less than three years. The larvae overwinter inside the tree and emerge as adults the next year, and the cycle repeats

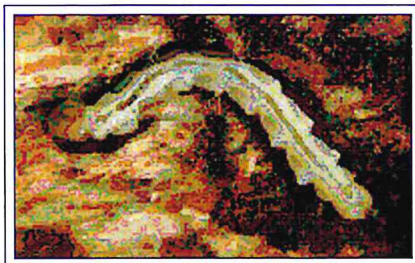
itself. Adults (pictured right) can fly at least a 1/2 mile from where they emerge to lay eggs on new ash trees. Spread of this insect also occurs by transport of contaminated lumber and firewood with larvae inside.



Containment of this insect is very difficult, and may only be possible with very early detection. Public awareness may be the most important aspect of early detection and any attempt at isolating and controlling the insects' spread. If you have ash trees on your property, keep a lookout for this insect or signs of its activity. Look for small "D" shaped holes in the bark, a thinning of the canopy, and sprouts growing from the base of the tree. These are all possible signs of the emerald ash borer. Once a stand of trees is infected, studies are showing that mortality rates are 100% and tree death occurs in three years or less. Thus far, more than 20 million ash trees have been killed by this exotic insect.

Anyone who suspects a tree has been infested is urged to first contact their County Extension Office. The Illinois Department of Agriculture also offers a toll free hotline at 1-800-641-3934 for Extension-confirmed infestations.

For more information on the emerald ash borer, visit any of the following websites: www.emeraldashborer.info/, the USDA Forest Service at www.na.fs.fed.us/fhp/eab/index.shtml, and the State of Illinois at www.dnr.state.il.us/conservation/forestry/Urban/Index.htm.



Animals

Otters in the Rock?

By Richie Wolf, Superintendent of Education

River otters (*Lutra canadensis*) have long been known for their playful character. However, they were eliminated from much of their former range by over trapping in the 19th century and from the loss of clean, clear river habitat. In Illinois, they were completely gone but now, they're back! Through the processes of reintroduction, otters were brought from other healthy populations and placed in Illinois where suitable habitat exists. Otters need 50-100 miles of high quality river habitat. The Rock River has provided such habitat. However unlikely, otters have adapted to the dense human population base. In fact, they have gotten in trouble in some areas for destroying farm ponds of sport fish, making the owners quite upset.



There have been several confirmed sightings in our county. There have been at least three otters accidentally trapped in enclosures not intended for them. Recently, a road-killed otter was found on River Road just south of the Byron Forest Preserve. We have obtained a salvage permit from the Illinois Department of Natural Resources and will have a study skin made for educational uses. The river otter was taken off the Illinois Endangered Species list and is not currently listed as threatened either. They are protected, however, as an Illinois fur bearer. The next time you're walking or driving along the Rock, Pecatonica, Sugar, or Kishwaukee Rivers, keep an eye out for this member of the mustelid family.

Fox Snakes

By Katie Schoenfeldt, Assistant Superintendent of Restoration and Maintenance

Fox Snakes are locally common snakes that love to reside in prairie habitats. Here at the Byron Forest Preserve, we have a healthy population of this wonderful snake. If you are lucky enough, you may be able to take a walk out on the prairie and catch a glimpse of one. The scientific name of the fox snake is *Elaphe vulpina*. The fox snake is a large snake that grows to be anywhere between 36-54 inches long. It has a copper colored head that is distinctly wider than its neck. This snake also has a yellow belly with bold black markings. The fox snake is a non-venomous diurnal constrictor. This snake rattles its tail to warn potential predators not to come any closer. For this reason, the fox snake is often confused with the rattle snake. I assure you that, here at the Byron Forest Preserve, if you see a large snake rattling its tail, it is a fox snake, not a rattle snake.

You are most likely to come across a fox snake during early spring into late autumn. Mating season for this snake occurs during the months of late June and early July; thirty days later, the fox snake will lay anywhere from 8-27 eggs. The eggs hatch in late August and early September.



The fox snake feeds on small mammals, birds, bird eggs, and nestlings. The fox snake wraps its body around its prey and squeezes until the prey suffocates. The main predators of the fox snake are carnivorous mammals such as foxes and coyotes along with birds of prey.

If you are interested in checking out a domesticated fox snake, all you need to do is visit the Jarrett Prairie Center Museum. There, you can get an up close view of our fox snake, D.C.

Boy Scouts...**Boy Scout Badge - Astronomy**

Where: Jarrett Prairie Center
 When: Monday, **February 25**
 Time: 6 - 8 pm
 Cost: \$5 / scout
 Ages: 10 and up
 Min/Max: 5 / 25

Register by noon on February 22.

Webelos...**Webelo Badges**

Where: Jarrett Prairie Center
 When: Monday, January 14 - *Naturalist*
 Register by noon on Jan. 11.
 Monday, January 28 - *Forester*
 Register by noon on Jan. 25
 Time: 6 - 8 pm
 Cost: \$5 / webelo
 Min/Max: 5 / 25

**Scrapbooking - Creative Memories**

Creative Memories scrapbooking classes are held at the Jarrett Prairie Center by Cindy Adams and Vicki Miller. If you're interested in signing up for one of their classes, please call Cindy at 1-815-234-7505.

Saturday, January 12 • 9am-9pm
 Saturday, January 26 • 9am-9pm
 Friday, February 22 • 2-11pm
 Saturday, February 23 • 9am-9pm
 Friday, March 7 • 2-11pm
 Friday, April 25 • 2-11pm
 Saturday, April 26 • 9am-9pm

**Jewelry Making**

We'll supply the beads and wire and show you how to make jewelry as nice as anything you'd find at a craft show. Participants may make up to three pieces.

Where: Jarrett Prairie Center
 When: Saturday, January 12
 Time: Noon - 2 pm
 Cost: \$10 / person
 Ages: 10 and up
 Min/Max: 5 / 25

Register by noon on January 9.

**JAZZY
JEWELRY**

Painting The Winter Landscape

Snow is not just white! We'll observe the winter view (from indoors) and learn some techniques for painting it realistically with watercolor. Beginners welcome. All materials provided.

Where: Jarrett Prairie Center
 When: Saturday, January 26
 Time: 1 - 4 pm
 Cost: \$4 / person
 Ages: 7 - 14
 Min/Max: 5 / 20

Register by noon on January 24.

Watercolor Painting

Learn about everything from paper and brush selection to how to do glazes and washes. Class will start with general instruction, but each participant will also receive individual attention as we work on painting. Beginners welcome. All materials provided.

Where: Jarrett Prairie Center
 When: Saturday, **March 15**
 Time: 6 - 8 pm
 Cost: \$6 / person
 Min/Max: 5 / 20

Register by noon on March 12.

**Artist's Display & Reception - Sharon Wallace**

Visit the Jarrett Prairie Center during the month of **April** to view Sharon's "snazzy boxes" which are based on women's emotions. Also see her pen and pencil art. A reception will be held for her on **April 18, 2008, 6-8 pm**. Refreshments will be served.

Birthday Parties



Jarrett Prairie Center

Themes: Tea Party, Native Americans, Sky's the Limit, Goodness Snakes, Insects of Our World, and Where Do Butterflies Go When It Rains? Call 815-234-8535 x217 to schedule your party.

Deluxe Party - \$75 (add'l child-\$5 each)

(program, cake, ice cream, tableware for 12, & banner)

Standard Party - \$45 (add'l child-\$5 each)

(program only for 12)

Stone Quarry Recreation Park
also offers birthday parties.

For details and costs, please call 815-234-8900.

Recycling Station

The Byron Forest Preserve District has a mission to provide for preservation of natural resources, to provide education about natural and cultural heritage, and to provide recreation. The District developed a recycling station and is educating hundreds of students on recycling through the International Earthkeepers program. Materials from the recycling station are collected and sorted twice per month, producing up to three tons of recyclable material like cardboard, glass, newspaper, plastic, and metals. The cost of hauling is covered through a cooperative agreement with the Ogle County Solid Waste Management Department.

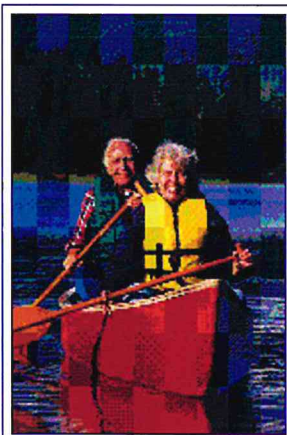


The station accepts glass, aluminum, plastic #1-5 & #7, tin, steel, mixed paper, cardboard, and newspaper. The bin is located in the maintenance parking lot at 7993 N. River Rd. in Byron. The station is open during daylight hours seven days per week. Please recycle responsibly by leaving the area cleaner than when you arrived. **You no longer need to separate the items in each bin.**

Canoe Rentals

We rent canoes. Just call us with your date and number of canoes needed. We'll haul you upstream on the Rock River and accompany you back to your vehicles at the River Park parking lot on River Road across from Heritage Farm.

Canoes are \$25 each and include paddles and life jackets. Call Richie at 815-234-8535 ext. 217 for this unique and fun outing!



Outreach

We offer educational programs to any group including retirement homes and nursing facilities for a small fee. Using our nature staff and nature stuff, we come to you and deliver exciting and educational programs including Birds of a Feather, Indian Life (with traditional dress), and Animal Encounter (with live animals). Call today to book your next on-site program, 1-815-234-8535 ext. 217.

Last Minute Gift Ideas!

Are you looking for a last minute gift for that hard to buy for family member?

Is she a golfer? Buy her a season pass or VIP voucher at PrairieView Golf Club. Or, check out the pro shop for some great holiday specials!

Is he a skateboarder? What about a pass to The Rock Skate Park at Stone Quarry Recreation Park.

Is she an outdoors person who likes to learn? Check out the selection of books at the Jarrett Prairie Center Gift Shop. There's also honey and maple syrup that would make a great gift basket!

Field Trips

to the Natural History Museum,

Weiskopf Observatory, & Heritage Farm Museum

Scouts, schools, and senior groups are welcome to the Forest Preserve for an educational and fun tour of our great museums. Staff welcome and give tours for the low cost of \$1.50 per person with a minimum of \$30 per group. We offer many sessions to choose from including prairie ecology, astronomy, and museum tour. Call 815-234-8535 x217 to schedule your next outing with us.

Winter Sports

Holiday Light Display

Don't miss one of the joys of the holiday season, visit our outstanding holiday light display on the main road up to the Jarrett Prairie Center. The display will be on this year from December 1-January 1, from 4:30-10pm daily. This display will definitely move you into the holiday spirit!

Sled Hill

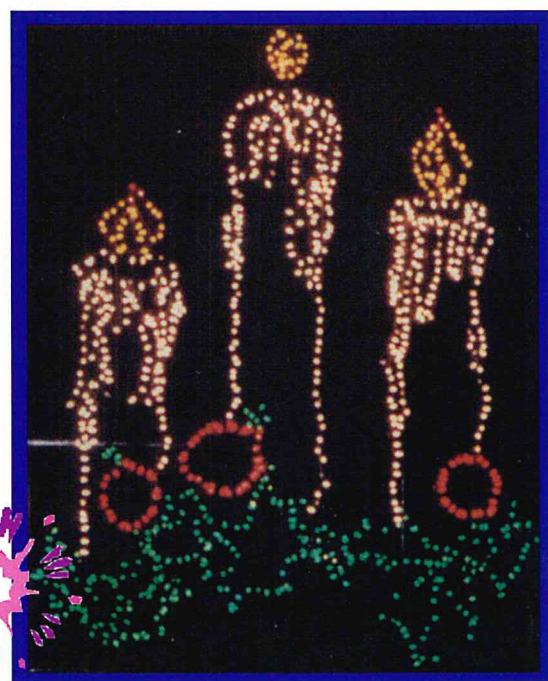
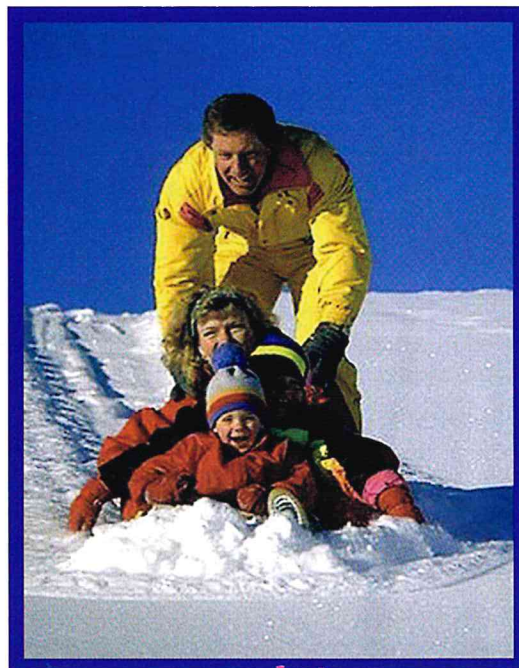
Bring your sleds or snowboards to the Jarrett Prairie Center for some awesome sledding fun! Located just west of the Jarrett Prairie Center. It's a lighted hill so it's open until 8 pm on Tuesdays and Thursdays for night sledding!

Cross Country Skiing

Get a great workout while you check out the beautiful winter wonderland at the Forest Preserve. Skis are available for rental at \$2 per hour at the Jarrett Prairie Center Gift Shop.

Warm Up

Hot chocolate and snacks are available at the Jarrett Prairie Center Gift Shop during open hours. Relax and get warm in one of the banquet rooms or museum.





PrairieView Golf Club

21

VIP Vouchers

This program is an outstanding offer. This could be used along with a season pass or instead of a season pass. Vouchers can be purchased in four increments starting at \$200 up to \$800. These are good for a two-year period. With a VIP Voucher, golfers receive discounts on regular prices green, cart, and range fees. Please see the chart below for a complete listing of savings!



	<u>\$200</u>	<u>\$400</u>	<u>\$600</u>	<u>\$800</u>
Green Fee Discount	5%	10%	15%	20%
Cart Fee Discount	15%	20%	25%	30%
Range Fee Discount	40%	40%	50%	50%

2008 Season Pass Golf Passes on Sale Now!!

Season Golf Passes are now on sale at PrairieView Golf Club. A discounted rate is offered if you choose to purchase your 2008 season golf pass before Christmas. Please refer to the fees listed below that indicate the great savings by purchasing your season pass early.

	Before <u>12/22/07</u>	After <u>12/22/07</u>
Resident- Single Pass		
Adult	\$450	\$550
Senior	\$300	\$400
College Student	\$185	\$285
Junior	\$140	\$240
Resident - Couple/Family		
Adult	\$800	\$900
Senior	\$530	\$600
Out of District - Single		
Adult	\$560	\$650
Senior	\$360	\$460
College Student	\$220	\$320
Junior	\$160	\$220
Out of District - Couple/Family		
Adult	\$900	\$1000
Senior	\$630	\$700



2008 Golf Fees

Weekend Green Fees

18 Holes

Resident	\$23
Non-resident	\$33
Sr./Jr. Resident	\$16
Sr./Jr. Non-resident	\$21

9 Holes

Resident	\$15
Non-resident	\$20
Sr./Jr. Resident	\$12
Sr./Jr. Non-resident	\$15

Twilight

Resident	\$15
Non-resident	\$20

Weekday Green Fees

18 Holes

Resident	\$19
Non-resident	\$27
Sr./Jr. Resident	\$14
Sr./Jr. Non-resident	\$17

9 Holes

Resident	\$12
Non-resident	\$17
Sr./Jr. Resident	\$10
Sr./Jr. Non-resident	\$13

Twilight

Resident	\$12
Non-resident	\$17

Cart Fees

18 holes	\$28
9 holes	\$18
Sr. 18 holes	\$22
Sr. 9 holes	\$14
Twilight	\$18

Volunteers, Etc.

Join Our Community of Volunteers

*Each person who gives of themselves,
gives to themselves.*

Tuesday Morning Volunteer Group

Come join us for a time of visiting, refreshments, and fun indoor projects.

Where: Jarrett Prairie Center
7993 N. River Rd., Byron
When: Tuesdays, Year Round
Time: 8:30-11am
Cost: Free
Ages: All



Wednesday Woodshop Group

Come join the area men for coffee, and the opportunity to use your skills in carpentry and woodworking. New woodshop volunteers check in at the Jarrett Prairie Center before going to the Woodshop.

Where: Maintenance Woodshop
7993 N. River Rd., Byron
When: Wednesdays, Year Round
Time: 9-11am
Cost: Free



Individual and Family

The Byron Forest Preserve has several volunteer opportunities for individuals and families interested in sharing their time for special events, programs of both educational and recreational orientation. These events and programs run throughout the year. For more information, call Linda at 1-815-234-8535 x200.

Organized Groups

The Byron Forest Preserve has service and volunteer opportunities. We can arrange times and specific service areas for you and your group. These areas can be related to awards, badges, or just for the benefit of learning to serve your community and others. For information, call Linda at 1-815-234-8535 x200.

PrairieView's "icky" Pond Project

If you have driven by PrairieView Golf Club on German Church Road lately, you probably noticed that the small pond next to the #8 green is missing something rather important to ponds.....water.

On October 1st and 2nd, staff from the Byron Forest Preserve and City of Byron began draining the 1.4 surface acre pond to begin an effort to reseal the leaking pond, which has been four-five foot lower than desired for the last few years.



On the morning of October 2nd, once the pond had been drained down to a foot of water, staff armed with fishing nets and large plastic tubs began to net the fish and frogs to transfer over to the other pond located on the golf course. While at first, it appeared to be a daunting task, soon they were netting more fish than the guys on shore could transfer into the large holding tank on the truck. In all, staff transferred around 100 large mouth bass, including several close to five pounds in size, and about about 125 bluegill. By the way, if you're interested in catching these fish, register for our ice fishing program on page 12.

Now that the pond has been drained, the only things that remain are two wooden fish cribs, about two feet of muck, and well over a thousand golf balls.

The current phase of the project involves developing a plan to remove all the sediment from the bottom of the pond, reshape the banks to allow the pond to be filled to the desired level, and to line the pond with clay to seal the seams in the limestone. Once all the excavating and lining is completed and the pond is filled once again, the Forest Preserve's restoration crew will begin to restock the pond with bass and bluegill, and PrairieView's golfers will begin their own restocking of the pond with Nikes and Titleists.



Facilities

PrairieView Golf Club

PrairieView Golf Club is a public, 18-hole bent grass championship golf course. Rated 4 stars by Golf Digest. This challenging course features bent grass tees, greens, and fairways. PrairieView also offers a full service practice facility, equipment rental, fully stocked pro shop, lessons, and handicap services. The newly remodeled clubhouse features *The Prairie Grass Pub* for relaxing with your friends after a round of golf. The Prairie Grass Pub offers an extensive menu of delicious entrees and beverages. For more information and tee times, call 1-815-234-GOLF (4653).



Jarrett Prairie Center

Habitat exhibits, dioramas, audio interpretation, and view of the prairie. Wetland, woodlands, and prairie environments are displayed pre-European settlement. You may also get a souvenir in our gift shop.

Where: 7993 N. River Rd., Byron

When: Open Every Day

Cost: Free

Time: Mon, Wed, Fri - 8am-4:30pm

Tues & Thurs - 8am-8pm

Sat-9am-4pm & Sun-1-4pm



Weiskopf Observatory

View the stars and planets through our 11" Celestron telescope. Experienced staff will guide you through the skies. Call for viewing conditions at 234-8535, ext. 216. Closed if cloudy.



Where: 7993 N. River Rd., Byron

Time: Dark until 3 hours after dark

When: Saturdays (and Tuesdays in June, July, & August)

Cost: Free

Heritage Farm Museum

Enjoy a guided tour of this 1800s farm and museum with audio interpretation. Includes a grout house, corn crib, wind mill, and more. Come check out the new "residents!"

Open Hours: April 1 - October 31

Mon-Fri-8am-4:30pm, Sat-10am-4pm, Sun-2-6pm

Self-guided tours are free. A small fee may be charged for guided tours. Closed on holidays. Call 1-815-234-8535 ext. 217 for more information.



Stone Quarry Recreation Park

Stone Quarry Recreation Park has something for everyone! Many programs and activities are offered at Stone Quarry Recreation Park all year round. Located at 6845 German Church Road, Byron. Call 1-815-234-8900 for more information.



Stone Quarry Park Amenities:

Indoor

Party Room - capacity 300

Arcade Room

Food Factory

61" & 55" Big Screen T.V.s

Billiards Table

Juke Box

Air Hockey

Outdoor

Miniature Golf Course - \$4

Batting Cages - \$1 or \$3

Indoor/Outdoor Skate Park - \$3

Water Splash Area - FREE

Sand Volleyball Pit - FREE

Picnic Shelters - \$25

Basketball Courts - FREE

Playgrounds - FREE

Horseshoe Pits - FREE

Group Outings

Birthday Parties

Company Picnics

Family Reunions

Graduation Parties

Day Camp Trips

ALL ABOARD THE GIFT EXPRESS

Get on board with Byron Bank's New Account Giveaway!

Open any new service at any Byron Bank location and enter your name to win
\$1,000

Two services, two entries.....

Drawing held 12/28/07 Must be 18 to enter

Full Service Bank in Davis Junction is now open. Checking and Savings Accounts, Certificates of Deposit, HSA's and IRA's, Loans, Safe Deposit Boxes and 24 hour ATM.

Does your Christmas list have some "problems"?



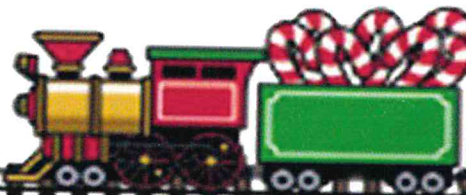
Byron Bank offers VISA gift cards! Available for Christmas, Birthdays, Graduations, Anniversaries, Weddings or just because-in any amount
From \$25 to \$500.

These offers are good at all Byron Bank locations! Call or stop in at any of our facilities!

200 N Walnut
Byron 61010
815-234-2561

5653 N Junction Way
Davis Junction 61020
815-645-2610

11159 Hwy 76
Poplar Grove 61065
815-323-1452



Byron Forest Preserve District
7993 North River Road
PO Box 1075
Byron, IL 61010

ROY & FLORENCE HEDGES
1481 E OAK GROVE
LEAF RIVER IL 61047

PRESORT STANDARD
US POSTAGE PAID
BYRON IL 61010
PERMIT NO 67