

THE BLAZE

A publication of the Byron Forest Preserve District

2007 Fall/Winter Issue

Matt Johnson Scholarship Fund Car Show

September 2nd



Halloween on the Prairie

October 28th



Annual Holiday Craft Show

November 10-11



Director's Message

Thank You Sponsors...



Byron Bank

ExelonSM

Nuclear

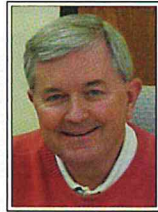
Byron Generating Station

**Dr. Bob & Holly Johnson
Matt Johnson
Scholarship Fund**

**Stephen J. Nardi
Land Donation**

From Executive Director Edward C. Clift...

Dear Citizens,



Fall is in the air at the Forest Preserve! We have three special events planned for you this fall. Our first ever Car Show is scheduled in September along with returning favorites, Halloween on the Prairie in October and the Annual Holiday Craft Show in November. Join us for these events!

Stone Quarry Recreation Park will continue to be open this fall, please see the park hours listed in this publication. A variety of programs are offered at Stone Quarry including dances, gingerbread workshops, glow-in-the-dark mini-golf, dance lessons, and many other activities. The mini-golf course, skate park, and batting cages will also be open this fall, along with the playground and water splash play area (for those warm fall days). Bring your family out to Stone Quarry for an enjoyable day.

Our Education Department has planned many outdoor adventure activities. Field trips to Starved Rock State Park to see the fall colors, hawk watching, and visiting the John Deere Pavilion are only a few. They have also scheduled badge workshops for Brownies, Boy Scouts, Webelos, and Junior Girl Scouts along with a variety of arts and crafts programs.

The Restoration Department has a great article on ticks and Lyme Disease that should raise your awareness of safety issues regarding ticks.

If you have any questions or need additional information, please call me at 1-815-234-8535 ext. 201. Have a great fall and we look forward to seeing you at the Forest Preserve.

Ed Clift

Edward C. Clift
Executive Director

Stone Quarry Recreation Park

6845 German Church Road, Byron



Jarrett Prairie Center

7993 North River Road, Byron

Buy 3 pumpkins, get 5 free gourds

Must present coupon. Not valid with any other offer.
Expires October 31, 2007



Inside This Issue...

Car Show	5
Halloween on the Prairie ..	6
Family Pumpkin Carve	6
Craft Show	7
Gingerbread House	
Workshops	7
Special Events	8
Kids Concerts	8
Stone Quarry	9
Outdoor Adventures	10
Trips	11
Preschool	11
Scout Badges	12
PrairieView Golf Club	13
Potpourri	14-15
Environment	16
Birds & Bugs	17
Volunteers, Etc.	18
Facilities	19

Jarrett Prairie Center Hours:

Mon., Wed., Fri.	8am-4:30pm
Tues. & Thurs.	8am-8pm
Saturday	9am-4pm
Sunday	1-4pm

Jarrett Prairie Center is closed:

Labor Day, September 3
 Thanksgiving, November 22-23
 Christmas Day, December 25
 New Year's Day, January 1

Jarrett Prairie Center Hours during Christmas break:

December 24 - 8am-Noon
 December 26-28 & 31
 Less than 4" of snow - 9am-Noon
 More than 4" of snow - Noon-8pm

Administrative Offices are closed:

Labor Day, September 3
 Columbus Day, October 8
 Veteran's Day, November 12
 Thanksgiving, November 22-23
 Christmas Day, December 25
 New Year's Day, January 1

Behavior Policy

To ensure safe and enjoyable programs and facilities for all residents, the Byron Forest Preserve District has developed the following Code of Conduct. Participants in programs and those using facilities shall: (1) Show respect to all participants, staff, equipment, supplies and facilities; (2) Refrain from using offensive or profane language; (3) Refrain from aggressive behavior that could cause bodily harm.

The Byron Forest Preserve District reserves the right to dismiss a participant from a program if their behavior or language is deemed inappropriate by staff.

The Byron Forest Preserve District applies a caring and positive approach to discipline. Our staff will work with parents when special accommodations are necessary due to a participant's disability.

The Byron Forest Preserve District reserves the right to dismiss a participant whose behavior endangers the safety of others or causes property damage.

Byron Forest Preserve District

7993 North River Road, P O Box 1075, Byron IL 61010
 815-234-8535 • byronforestpreserve.com

Board Meetings

The Byron Forest Preserve District Board of Commissioners meetings are held on the third Monday of each month at 7 pm at the Jarrett Prairie Center, 7993 North River Road, Byron.

Board of Commissioners

Jeff Huber	President
Sandy Brooks	Vice President
Dave Flowers	Secretary
Jeff Ludwig	Treasurer
Dave Breen	Commissioner

Who To Contact

General inquiries

815-234-8535 ext. 200

linda@byronforestpreserve.com

Administrative Staff

Edward Clift, Executive Director
edclift@byronforestpreserve.com
 815-234-8535 ext. 201

Todd Tucker, Deputy Director & Restoration Superintendent
todd@byronforestpreserve.com
 815-234-8535 ext. 222

Richie Wolf, Education Supt.
richie@byronforestpreserve.com
 815-234-8535 ext. 217

Shonnah Poe, Manager
 Stone Quarry Recreation Park
shonnah@stonequarrypark.com
 815-234-8900

Steve Murray, Manager
 PrairieView Golf Club
pvgolfpro@hotmail.com
 815-234-4653 ext. 12

Robin Davis, Finance & Human Resources Superintendent
robin@byronforestpreserve.com
 815-234-8535 ext. 204

Steve Storz, Maintenance Supt.
 PrairieView Golf Club
stevestorz1@hotmail.com
 815-234-8535 ext. 208

Michelle Lipps
 Blaze Editor, Design, & Layout
michelle@byronforestpreserve.com
 815-234-8535 ext. 224

Photography Policy

Photographs and videos are periodically taken of participants during programs, special events, trips, or at the parks.

Please be aware that these photographs may be used for Forest Preserve District publications and/or other media.

Our Mission



**BYRON
FOREST
PRESERVE
DISTRICT**

Mission Statement

Preservation ~ Education ~ Recreation

The mission of the Byron Forest Preserve District is to provide for Preservation of Open Space/Natural Resources, provide Education concerning our Natural Environment/Heritage, provide Recreational Opportunities and Enterprise Operations that are consistent with our Agency goals.

Thank You...

to the contributors to the Matt Johnson Scholarship Fund!

Rich & Sharon Pleniewicz
Robert & Patricia Huls
George Wrasse
Dr. Paul & Roberta Povlsen
Rich & Lavonne Berkeley
Jerry & Judy Jewell
Brad & Meredith Townsend
Gene & Shirley Smith
John & Joyce Hunsaker
Dr. Frederic & Drusie Bushnell
Ken & Dana Norup
Mt. Morris Savings
Ryan Nelson
Ben & Gail Barton
Valerie & Mary Verdun

Kiwanis Club of Byron
Ed & Liz Stirling
Dr. Arthur & Elaine Breck
Randy & Kitty Hogan
SwedishAmerican Medical Assn.
Jeff & Cathy Huber
Brad & Cindy Adams
Mr. & Mrs. Krunnfusz
Carl & Jean Eiten
Mr. & Mrs. Michael Smith
Elaine Gouker
Joi Dundas
Daniel & Liz O'Connor
Paul & Jenine Povlsen

Mr. Anthony Giancattarino
Lowell & Suzanne Bunker
Dr. Robert & Holly Johnson
Jay & Meggan Franklin
Lee & Darlene Cadmus
Ms. Dorothy Zarcoff
Dave & Nancy Klink
George & Phyllis Ashby
Mike & Jan Sloan
Rick & Jody Meyer
Rev. & Mrs. William Nelson
Jon Link
Liang Wang
Kathy Rushing

Stone Quarry Recreation Park

6845 German Church Road, Byron • 815-234-8900 • www.stonequarrypark.com

Buy 1 round of mini-golf, get a free batting cage token!

Not valid with any other offer. Not redeemable for cash. Offer valid September and October 2007.

Matt Johnson Scholarship Fund Car Show

Street Rods, Muscle Cars, & Family Fun!

The Byron Forest Preserve is hosting our first ever car show! Cadwell Productions and the Forest Preserve are working together to make this event fun and memorable for the whole family!

Along with street rods, muscle cars, and maybe a few motorcycles, there'll be a DJ, country music band, pancake breakfast, tractor show, farmer's market, children's activities, and a concession stand. The Byron Fire Department will demonstrate an extrication and provide information on the upcoming Fire Prevention Week. Lifeline helicopter will also make an appearance by landing in the area.

All profits from the car show registrations will be donated to the Matt Johnson Scholarship Fund. This Fund is available to area youth who need financial assistance to participate in Forest Preserve programs.

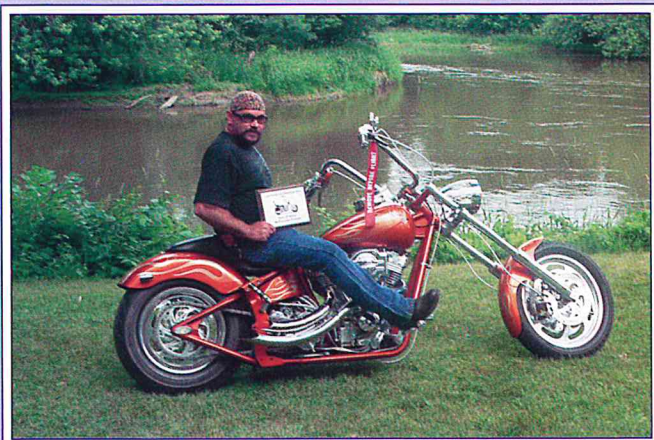
There were other activities being planned at the time of printing this publication. Please call 815-234-8535 ext. 200 for more information. Be sure to mark your calendars and join us for some affordable family fun!



**Sunday, September 2, 2007
8 am - 4 pm**

**7993 North River Road, Byron • (815) 234-8535 x200
www.byronforestpreserve.com**

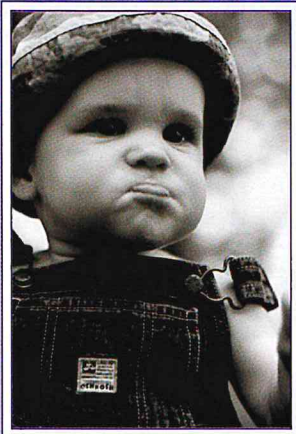
**Amazing Cars, Trucks, & Motorcycles
DJ & Country Music Band
Pancake Breakfast • Tractor Show • Farmer's Market
Children's Activities • Concession Stand**



If you're a car owner and would like to be in the show, please call Jack Cadwell at 815-282-3961 or 815-494-0018.

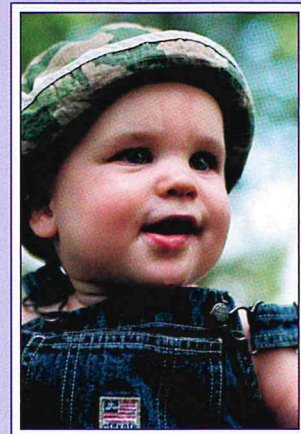
Halloween on the Prairie

Put a smile on their faces...



*Before
Halloween on the Prairie*

By bringing your family to our Annual Halloween on the Prairie event. Come and enjoy this returning favorite. There will be haunted hayrides, a straw maze, face painting, crafts, games, a concession stand, and new features this year, a howl-o-ween egg hunt and a snake wrangler. The games are co-sponsored by the Byron Park District. *We need your help. Local groups or just a group of friends are needed to set up scary scenes along our haunted hayride route. This is great fun scaring all of the riders. It's also a great fundraiser. Lots of prize money will be awarded and all groups get a participation bonus. Call Richie at 815-234-8535 ext. 217 for more information or to reserve your space.*



*During
Halloween on the Prairie*

Jarrett Prairie Center
Sunday, October 28 • 1 - 5 pm
FREE admission
 Small fees for games and hayrides.

Family Pumpkin Carve

Happy Pumpkins...

Bring your family and your carving utensils to our Family Pumpkin Carve event. Let's make some happy pumpkins! We'll provide the pumpkins and the candles.

Where: Stone Quarry Recreation Park
 When: Saturday, October 27
 Time: 1 pm
 Ages: All
 Cost: \$10/family (includes 4 pumpkins)
 Min./Max.: 3/20 families

Register by noon on October 25.

See page 15 for more Fall Fun!



Pumpkins & gourds will be for sale in October at Stone Quarry Park & the Jarrett Prairie Center. (See coupon on page 2.)

16th Annual Holiday Craft Show

Saturday, November 10 - 9am-4pm & Sunday, November 11 - 11am-3pm

You'll find that great, one-of-a-kind gift for that special someone at this year's craft show. With about 30 crafters exhibiting, there's a wide variety of crafts including quilts, clothing, jewelry, candles, flower arrangements, ceramics, decorations, baskets, birdhouses, furniture, and much more!

Bring your children to have breakfast with Santa Claus from 9-11am on Saturday, November 10. All believers can visit with him and tell him everything they want for Christmas. We'll provide donuts, juice, and milk. Bring your cameras to capture this awesome memory!

Be sure to register for the World's Largest Stocking. This 8', toy-filled stocking will be given away on Sunday afternoon, November 11th.

We'll also be giving away door prizes throughout this two-day event. The prizes will be items donated by the craft booth vendors.

Admission is free. The Jarrett Prairie Center is accessible to the physically challenged. An affordable concession stand and bake sale will be open on both days.

Parents can shop while the youngsters learn about their heritage at the hands-on, natural history museum in the Jarrett Prairie Center.



Visit Santa at the Craft Show on November 10th, 9-11am and at Stone Quarry Park on December 1st & 8th, Noon-2pm.



Light Show

Take an evening drive through the forest preserve to see the festive holiday light show beginning in December. The park will be open every night until 10 pm for all to enjoy the displays.

Attention Crafters

There are still booths available at the show. The rental cost is \$30-\$40 per booth. If you would like more information, please call Michelle at 815-234-8535 ext. 224.

Gingerbread House Workshops & Visit Santa

Tickets are on sale now! Families can come together in a festive atmosphere to create a beautiful, candy-filled gingerbread house to adorn their holiday table! Children of all ages will enjoy covering their gingerbread (and everything else) in sugary goo! Parents are encouraged to help their little ones decorate, to share this joyous memory with their children during this special holiday season! So bring your sweet tooth and imagination to decorate your own pre-made gingerbread house. Candy and icing will also be supplied. Oh yes, Santa will be there too! Visit Santa from noon - 2pm.



Where: Stone Quarry Recreation Park
When: Saturdays, December 1 & 8
Time: 1 - 2 pm
Ages: All (4 & under may share a house with an older sibling or friend)
Cost: \$15 / gingerbread house
Min./Max.: open
Instructor: Marie-Laure Cortese

Register by noon on November 22.

Note: Payment is due at the time of registration, please. This guarantees your child a house, and also gives time for the instructor to plan and pre-make all of the houses. Also, a parent must be present during the time of the workshop. Thank you!

Special Events

September
October
November
December

Halo 2 Tournament

Team slayer to 100. Round Robin Tournament, best two out of three matches wins. Each team must bring their own equipment (t.v., x-box, game, controllers, etc.)

Where: Stone Quarry Park
When: Saturday, **Oct. 20**
Saturday, Nov. 17
Time: 1 pm
Cost: \$20 / team of 4
Ages: Middle & High School
Min/Max: 3 / 15

Register by noon on the Wednesday before the program.



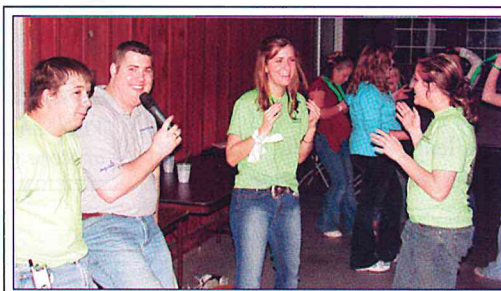
Glow in the Dark Miniature Golf

Play miniature golf with a glow in the dark golf ball! The course will be outlined with glow sticks!

Where: Stone Quarry Park
When: Friday, September 14
Time: Dusk - 10 pm
Cost: \$4 / person
Ages: All



High School Dance



*High schoolers...
Come on out and dance the night away with DJ Ryan and the Stone Quarry crew!*

**November 9
8-11 pm - \$4/person**

Free Mini-Golf for Grandparent's Day

Grandmas and Grandpas play free!
Where: Stone Quarry Park
When: Sunday, September 9
Time: Noon - 5 pm
Cost: Free for Grandparents
Ages: All

Father/Daughter Luau

Aloha! Do as the natives do and come dressed in your favorite Hawaiian attire. Pizza, drinks, ice cream sundaes, games, prizes, and fun with dad!

Where: Stone Quarry Park
When: Saturday, Nov. 10
Time: 5:30-7:30 pm
Cost: \$15 / couple
\$5 / add'l daughter
Ages: All
Min/Max: 5 / 15

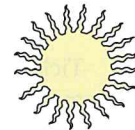
Register by noon on Nov. 8.

FREE Kids Concerts

Jarrett Prairie Center • 3 pm

Sponsored by Exelon

**MAGIC MATT
NOVEMBER 17**



**PAUL YOUNG BLOOD
WTVOWEATHERA W
DECEMBER 8**



September
October
November
December

Stone Quarry Park

9

Middle School Dances

You can dance, play arcade games, shoot pool, have a slush, or just hang out! Mark these dates on your calendar and join your friends, DJ Ryan from Sound Productions, and the Stone Quarry crew for some fun!

Where: Stone Quarry Park
When: September 14 & 28
October 12 & 19
November 2 & 16
December 7 & 21
Time: 7 - 10 pm
Cost: \$4 / person
Ages: Middle School

Chaperones needed,
please call 815-234-8900!



DANCE... TAP, BALLET, JAZZ



Do you love to dance or want to learn how? Have you ever dreamed of being in your favorite stage show? Then this dance program is just for you! Classes include tap, ballet, jazz, and musical theater dance.

These classes are for all levels of dance from beginners to experienced dancers.

Where: Stone Quarry Park
When: Begins Mon., Aug. 20
Time: 3:30-9:30pm
Cost: TBA
Ages: 3-18
Instructor: Heather (Hartzell) Krick
(Stage Door Performing Arts Studio)
For more info, call 815-234-8900.

Check us out
at MySpace.com/stonequarrypark!

Kids Night Out

Featuring activities, games, prizes, and fun in the park. Pizza and pop provided. Extra money needed for arcade games and other concession items.

Where: Stone Quarry Park
When: Dates listed below.
Time: 5:30 - 7:30 pm
Cost: \$5 / person
Ages: First-Fifth Grade
Min/Max: 10 / 30

September 15
October 20
November 17
December 15

Register by noon on the
Wednesday before the program.

MIDNIGHT MADNESS

Join us for late night fun in the park! Stone Quarry will be open until midnight. Admission includes access to the skate park.

Where: Stone Quarry Park
When: 7 pm - Midnight
Dates: Oct. 20 & Dec. 1
Cost: \$5 / person
Ages: All
Min./Max.: 10 / 50
Register by noon on the
Wednesday before the program.

Stone Quarry Park Hours

August 16 - September 30

Mon, Wed, Fri - 4-7pm
Saturday - 11am-7pm
Sunday - Noon-5pm

October 1 - April 1

Monday - 4-7pm
Saturday - 11am-5pm

Christmas Break

December 28-30 &
January 4-6 - 11am-5pm

"No School" days - 11am-5pm

Park hours are subject to change due to weather related conditions or low attendance.



New Ramps! New Challenges!

Come check out the new equipment
at The Rock Skate Park.

September
October
November
December

Birding at Lowden State Park

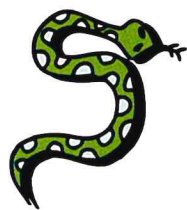
Bring your binoculars and field guides to this amazing park in Oregon, Illinois.

Where: Meet at Jarrett Prairie Center
When: Saturday, September 22
Time: 8 am
Cost: \$3 / person
Ages: All
Min/Max: 5 / 14

Register by noon on September 21.

Goodness Snakes

Let's learn about these amazing reptiles! See for yourself that they're really not slimy! Make a craft to take home.



Where: Jarrett Prairie Center
When: Sundays, **December 2 or 9**
Time: 6 - 8 pm
Cost: \$2 / person
Ages: All
Min/Max: 5 / none

Register by noon on Nov. 30 & Dec. 7.

Owl Prowl

Learn about our stuffed native owls in the museum then we'll take a hike to find the real ones!

Where: Jarrett Prairie Center
When: Monday, **December 3** or Saturday, **December 8**
Time: 7 - 9 pm
Cost: \$2 / person
Ages: All
Min/Max: 5 / none

Register by noon on Dec. 3 & 7.



Animal Archery

Use our new 3D animal targets to practice for the hunt. Rotate through 13 targets.

Where: Jarrett Prairie Center
When: Mondays, **October 1, 8, or 22**
Time: 5 - 8 pm
Cost: \$8 / person
Ages: 6 and up
Min/Max: 5 / 20

Register by noon on September 28, October 5 & 19.

Night Fishing

We'll take you to a pond for some great fishing. Bring your own equipment.



Where: Meet at Jarrett Prairie Center
When: Fridays, November 2 or 16
Time: 8 - 10 pm
Cost: \$6 / person
Ages: 6 and up
Min/Max: 5 / 50

Register by noon on November 1 & 15.

Beekeeping Workshops

Learn techniques and tools of the trade. Bring your bee suits!

Where: Jarrett Prairie Center
When: Sundays, Sept. 9, **Oct. 14**,
Nov. 18, **Dec. 9**

Time: 2 - 4 pm
Cost: \$2 / person
Ages: 3 and up
Min/Max: 5 / 25



It's Our River Day - Statewide Celebration

Learn about the Rock River's history then go canoeing.

Where: Meet at the River Park parking lot
(across from Heritage Farm Museum)
When: Saturday, September 15
Time: 2 - 5 pm
Cost: \$25 / canoe
Ages: All (Minimum one adult per canoe)
Min/Max: 2 / 10

Register by noon on September 14.



Canoeing the Rock

All equipment provided on this fun excursion!

Where: Meet at the River Park parking lot
(across from Heritage Farm Museum)
When: Saturdays, **October 13 or 27**
Time: 3 - 6 pm
Cost: \$25 / canoe
Ages: All (Minimum one adult per canoe)
Min/Max: 2 / 10 canoes

Register by noon on October 12 & 26.



Canoeing the Kish

Let's canoe the Kishwaukee River. All equipment provided.

Where: Meet at the Jarrett Prairie Center
When: Fridays, September 7 or **October 12**
Time: 4 - 7 pm
Cost: \$25 / canoe
Ages: All (Minimum one adult per canoe)
Min/Max: 2 / 10 canoes

Register by noon on September 6 & October 11.



Edible and Medicinal Hike

We'll search for natural foods and medicines.

Where: Jarrett Prairie Center
When: Saturday, November 3
Time: 10 am - Noon
Cost: \$2 / person
Ages: All
Min/Max: 5 / none

Register by noon on November 2.



September
October
November
December

Trips & Preschool



Trips

Starved Rock for Fall Colors

We'll see nature's fall beauty!

Where: Meet at the
Jarrett Prairie Center

When: Saturday, **October 20**

Time: 9 am - 5 pm

Cost: \$10 / person or
\$15 / couple

Ages: Adults

Min/Max: 5 / 14

Register by noon on Oct. 19.

Hawk Watch 2007

We'll travel to Duluth, Minnesota to visit this annual festival. We'll see thousands of migrating hawks!

Where: Meet at the
Jarrett Prairie Center

When: Friday-Sunday,
September 21-23

Time: Depart at 8 am.

Cost: \$150 / person or
\$250 / couple

Ages: Adults

Min/Max: 5 / 14

Register by noon on Sept. 7.

John Deere Pavilion

Celebrate the 10th anniversary of the pavilion. Lots to see and do if you like John Deere tractors!

Where: Meet at the
Jarrett Prairie Center

When: Saturday, **August 18**

Time: 9 am - 6 pm

Cost: \$10 / person or
\$15 / couple

Ages: All

Min/Max: 5 / 14

Register by noon on Aug. 17.

Preschool

Get your kids ready for kindergarten by enrolling them in our structured preschool classes. The Tuesday/Thursday classes are geared towards 3-year-olds and younger 4-year-olds. The Monday/Wednesday/Friday classes are geared towards older 4-year-olds and younger 5-year-olds. Children must be 4 years old by September 1, 2007, to attend the three-day class. You may register your child at anytime throughout the year if your child's birthday is later in the year.

Please call 815-234-8535 ext. 200 for more information.

Where: Jarrett Prairie
Center

When: Mon/Wed/Fri or
Tues/Thurs

Time: 9-11:30am or
1-3:30 pm

Cost: \$80/month for
Mon/Wed/Fri or
\$65/month for
Tues/Thurs

Ages: 3-5 years

Min/Max: 6 / 20 - M-W-F

6 / 16 - Tu-Th

Registration is ongoing.



Meet the Teachers

Jarrett Prairie Center

August 23, 2007

6 - 8:30 pm

*Questions, answers, tours, &
refreshments.*



Rock Valley College students presented a program to the Byron Forest Preserve Preschool. The children had a blast learning about several topics including nutrition and exercise!



Badge Workshops

September
October
November
December

Brownies...

Brownie Try-It - Art to Wear

We'll provide a t-shirt to decorate as part of the badge requirements. We'll also make bracelets, masks, and do face painting.

Where: Jarrett Prairie Center
When: Thursday, **October 4**
Time: 5:30 - 7 pm
Cost: \$5 / brownie
Min/Max: 5 / 20

Register by noon on October 2.



Brownie Try-It - Movers

We'll make pinwheels, gliders, and other crafts.

Where: Jarrett Prairie Center
When: Monday, November 12
Time: 5:30 - 7 pm
Cost: \$5 / brownie
Min/Max: 5 / 25

Register by noon on November 9.

Boy Scouts...

Boy Scout Badge - Indian Lore

Where: Jarrett Prairie Center
When: Monday, September 24
Time: 5 - 7 pm
Cost: \$5 / scout
Ages: 10 and up
Min/Max: 10 / none

Register by noon on September 21.



Webelos...

Webelo Badge - Naturalist

Where: Jarrett Prairie Center
When: Thursday, August 30
Time: 6 - 8 pm
Cost: \$5 / webelo
Min/Max: 5 / 30

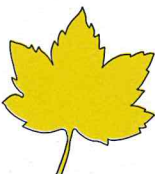
Register by noon on August 29.



Webelo Badge - Forester

Where: Jarrett Prairie Center
When: Monday, September 10
Time: 5 - 7 pm
Cost: \$5 / webelo
Min/Max: 5 / none

Register by noon on September 7.



Junior Girl Scouts...

Junior Girl Scout Badge -

Your Outdoor Surroundings

We'll go hiking and do other outdoor activities.

Where: Jarrett Prairie Center
When: Saturday, September 8
Time: 1 - 3:30 pm
Cost: \$5 / scout
Min/Max: 5 / 25

Register by noon on September 6.



Junior Girl Scout Badge -

Finding Your Way

We will learn how to use a compass, read maps, and leave directional trail signs.

Where: Jarrett Prairie Center
When: Saturday, **October 13**
Time: 3 - 5:30 pm
Cost: \$5 / scout
Min/Max: 5 / 25

Register by noon on October 10.

Junior Girl Scout Badge -

Earth Connections

We'll hike outdoors to identify plants and trees and study a prairie ecosystem.

Where: Jarrett Prairie Center
When: Friday, **October 19**
Time: 5 - 7:30 pm
Cost: \$5 / scout
Min/Max: 5 / 25

Register by noon on October 17.



Junior Girl Scout Badge - Art in 3D

We'll learn origami and make interesting sculptures as we complete activities for this badge.

Where: Jarrett Prairie Center
When: Thursday, **November 29**
Time: 5 - 7:30 pm
Cost: \$5 / scout
Min/Max: 5 / 25

Register by noon on November 27.



Need a different date or badge?

If your scout group needs a different badge or workshop date, please call us to schedule another workshop. A minimum number is required.

Call 1-815-234-8535 ext. 217.

PrairieView G.C. & Stone Quarry Park

Gold Medal Golf Classic

The 16th Annual Gold Medal Golf Classic is scheduled for September 8th and 9th. Last year's tournament drew a record number of players and included a ladies division for the fourth straight year. The tournament is 36 holes played at scratch and is flighted after the first round. The cost of the tournament is \$85 (\$55 for season pass holders) and includes over \$4,000 in prizes. This year's event promises to be bigger and better than ever with another record of entries so register early! For more information or to sign up, please call the PrairieView Clubhouse at 1-815-234-GOLF (4653).

Season Golf Pass Reminder

Just a reminder that season golf passes will go on sale in November. By purchasing your season golf passes early, you'll save money! Golf passes are discounted until Christmas. After Christmas, passes will be sold at the full rate. A complete listing of pass fees, VIP fees, and green fees will be published in the next issue of *The Blaze*.

Prairie Grass Pub

If you are looking for a change in scenery, make sure you visit the Prairie Grass Pub at PrairieView Golf Club. The newest addition to PrairieView is a must visit attraction in Byron.

The Pub opens daily at 11 am and remains open seasonally with the golf course. Features include indoor and outdoor seating, a beautiful 1200 square foot deck overlooking the 18th green, three big screen, high definition televisions, and, of course, a mouth-watering menu.

You don't have to be a golfer to relax and enjoy the Prairie Grass Pub. Stop by for lunch or dinner and take a look!



Stone Quarry Recreation Park

Something for all ages...



Beekeeping Mentoring Program

The Byron Forest Preserve District is implementing a new Beekeeping Mentoring Program because honey bees are vitally important to our environment.

The Forest Preserve's beekeeper, Jeff Ludwig (pictured below), recently attended a beekeepers' meeting and one of their concerns is the aging population of beekeepers. When asked, only two beekeepers present were under 40 years old. After discussing possible solutions to getting younger people interested in the field, a mentoring program was suggested.

The Forest Preserve is offering this program to anyone 16-30 years of age. If you are interested, please write a short letter of explanation of why you would be interested in participating. Upon review of the letter submissions, staff will decide who gets to participate first, second, third, etc. The participant is required to be in the program for the "beekeeper's year"

(spring to fall). At the end of the program, the participant would write a short essay about what they've learned. Then, if the participant is still interested, the Forest Preserve will buy a beekeeper's starter kit for him or her to begin beekeeping.

If you are interested in participating, please mail your letter of interest to the Byron Forest Preserve District, Attn: Michelle, P.O. Box 1075, Byron IL 61010. If you have any questions, please call 815-234-8535 ext. 224.



Green Energy Comes to the Jarrett Prairie Center

By Todd Tucker, Deputy Director & Superintendent of Restoration/Maintenance

The Byron Forest Preserve will be getting greener. The Jarrett Prairie Center is in the process of getting a new roof and then a 5kw solar (PV photovoltaic) system will be installed. The solar panels will be placed on the front, south facing slope as you enter the front doors. The system will have a 31-inch LCD display inside the JPC lobby for the public to view. It will display the weather (wind, temperature, and humidity) and how much energy and solar intensity the panels are producing. The 5kw system will produce around 750kw per month, and the average household uses about 850kw per month. This should equate to about 10-15% savings of the yearly electric cost for the building.

The Education Department will use the system as an educational program for school children. It is my hope to expand the panels to a 10kw system in a few more years. This type of system comes with a 30% or \$10,000 rebate whichever is greater, from the State of Illinois. If you have any further questions about the solar panels at the Jarrett Prairie Center, please feel free to call me at 1-815-234-8535 ext. 222.



Prairies: Refuge for Declining Songbirds

By Russell Brunner, Assistant Superintendent of Restoration

A report summarizing forty years of bird surveys shows a dramatic decline in a number of North American bird species, and some of the greatest declines are in grassland birds. These losses are especially high in Illinois, where more than 99% of the state's original prairies are gone. This is one of many studies showing marked declines in many prairie species, especially migratory songbirds that nest only in grasslands.

The Audubon study shows an 87% decline in the numbers of Eastern Meadowlarks (pictured right) and a 97% decline in the Bobolink population (pictured lower left) over that time period in Illinois. These are two once common bird species that migrate from Central and South America to the Midwest for summer breeding grounds, most of which have now vanished or are heavily degraded from their original healthy natural state.



These are two of hundreds of migratory bird species that depend on large grassland habitats for breeding and nesting. These two species are among many other declining grassland bird species that use the prairies of the Byron Forest Preserve for increasingly important nesting grounds. While this report shows a very negative trend in many bird species, there is some positive news. The report

found that some areas had increases in these grassland birds as a result of land protection and restoration efforts that returned the land to native prairie. These examples show us that our efforts can help these species continue to survive in our area. For example, while the report shows that the Eastern Meadowlark is becoming increasingly rare, it may seem like a rather common bird while hiking the trails around the Jarrett Prairie. In addition, Bobolinks have been nesting on the Nardi Hills Prairie Preserve over the last several years. In a recent bird count in the area, the endangered Henslow's Sparrow was heard here at the Jarrett Prairie. The original and restored prairies of the Byron Forest Preserve, along with a handful of other protected prairie properties in Illinois, are now among the last safe havens for these migratory songbirds. The Audubon study findings further support the importance of protecting the few remaining prairies in our area and the increasing importance of restoring lands to prairies if we want to help protect these species from the threat of extinction.

(Audubon article available at www.audubon.org/bird/stateofthebirds/ and at www.chicagotribune.com/news/local/chicago/chi-birds_15jun15,0,1615610.story)



Lyme Disease Hits Close to Home

By Todd Tucker, Deputy Director & Superintendent of Restoration/Maintenance

This article is to raise some awareness and safety within the woods of Northern Illinois and Southern Wisconsin. This safety concern deals with the Deer Tick and more specifically, Lyme Disease. Lyme disease is a spreading concern here in Northern Illinois and more and more cases arise every year. This disease hit very close to home here in Byron when a local man and nature lover was diagnosed with the disease.

The disease is spread when a person becomes bitten by a deer tick that is infected with *Borrelia burgdorferi* bacteria.

Symptoms: An expanding circular rash, flu-like symptoms, such as body aches, fatigue, and mild fever. In the United States, 80% of people develop a circular rash at the site of the bite. An infected person will develop symptoms around 7-14 days after the bite, but the symptoms can develop from 3-31 days. If early stages of Lyme disease go unnoticed, later symptoms can include swelling and pain in the joints (similar to arthritis); numbness and tingling in the hands, feet, or back; persistent fatigue; poor memory and re-

duced ability to concentrate; paralysis in the muscles of the face. If you feel like you may have the disease, you can have a blood test to determine if you have been exposed to an infected tick. Lyme disease is easily cured by treatment with antibiotics. Please contact your physician if you feel that you have been bitten and have some symptoms.

Regionally, the most common areas for the disease are the northern mid-west and the New England states. Lyme disease can be prevented by taking steps to avoid tick bites to include checking for and promptly removing ticks from your body and clothing. The proper clothing and use of insect repellent that contain Deet are the best methods of preventing tick bites. So, just remember to enjoy nature; but, be aware of the dangers and how to avoid them as best as you can.



Volunteers, Etc.

September
October
November
December

Join Our Community of Volunteers

*Each person who gives of themselves,
gives to themselves.*

Volunteers Save Taxpayers' Dollars

The Forest Preserve volunteers worked 2,015 hours last year. That number of hours times the current minimum wage is over \$15,000 in savings for the taxpayers of the Forest Preserve District. The tasks completed by volunteers include junior camp counselors, weather recording, special events, prairie restoration, dance chaperones, tee maintenance on the golf course, building shelves and cabinets, monitoring the bluebird houses, and putting together projects for preschool which includes coloring, cutting, wrapping presents, and laminating.

Tuesday Morning Volunteer Group

Come join us for a time of visiting, refreshments, and fun indoor projects.

Where: Jarrett Prairie Center
7993 N. River Rd., Byron
When: Tuesdays, Year Round
Time: 8:30-11am
Cost: Free
Ages: All



Wednesday Woodshop Group

Come join the area men for coffee, and the opportunity to use your skills in carpentry and woodworking. New woodshop volunteers check in at the Jarrett Prairie Center before going to the Woodshop.

Where: Maintenance Woodshop
7993 N. River Rd., Byron
When: Wednesdays, Year Round
Time: 9-11am
Cost: Free



Individual and Family

The Byron Forest Preserve has several volunteer opportunities for individuals and families interested in sharing their time for special events, programs of both educational and recreational orientation. These events and programs run throughout the year. For more information, call Linda at 1-815-234-8535 x200.

Organized Groups

The Byron Forest Preserve has service and volunteer opportunities. We can arrange times and specific service areas for you and your group. These areas can be related to awards, badges, or just for the benefit of learning to serve your community and others. For information, call Linda at 1-815-234-8535 x200.

Evening Insect Chorus

We will learn about some of the noisy insects that abound on the prairie at this time of the year. Catch and identify species, and learn which insect makes which sound, and make a noisy insect craft.

Where: Jarrett Prairie Center
When: Friday, September 21
Time: 5:30 - 7 pm
Cost: \$2 / child
Ages: 5 - 12 years old
Min/Max: 5 / 25



Register by noon on September 19.

Rock Hound

We will look for fossils at Stone Quarry and learn to identify different kinds of rocks. Start a collection or add interesting specimens to an existing collection.

Where: Jarrett Prairie Center
When: Saturday, September 22
Time: 1 - 3 pm
Cost: \$3 / child
Ages: 8-14 years old
Min/Max: 5 / 25

Register by noon on September 19.

America Recycles Day & Shirt Giveaway

Recycle some household waste at our bin and get a free 100% recycled shirt (while supplies last).

Where: Recycling bin located in the
Maintenance Area on River Road
When: Tuesday, November 13
Time: 2 - 4:30 pm
Cost: Free
Ages: All



Retirement Housing

Where do you want to live when you grow up? Sponsored by the University of Illinois Extension Office.

Where: Ogle County Farm Bureau Building
When: Monday, September 24
Time: 1 pm
Cost: Call 815/732-2191
Ages: Adults

Call 815-732-2191 to register by September 21.

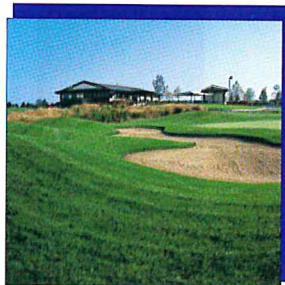
Outreach

We offer educational programs to any group including retirement homes and nursing facilities for a small fee. Using our nature staff and nature stuff, we come to you and deliver exciting and educational programs including Birds of a Feather, Indian Life (with traditional dress), and Animal Encounter (with live animals). Call today to book your next on-site program, 815-234-8535 ext. 217.

Facilities

PrairieView Golf Club

PrairieView Golf Club is a public, 18-hole bent grass championship golf course. Rated 4 stars by Golf Digest. This challenging course features bent grass tees, greens, and fairways. PrairieView also offers a full service practice facility, equipment rental, fully stocked pro shop, lessons, and handicap services. The newly remodeled clubhouse features *The Prairie Grass Pub* for relaxing with your friends after a round of golf. The Prairie Grass Pub offers an extensive menu of delicious entrees and beverages. For more information and tee times, call 1-815-234-GOLF (4653).



Jarrett Prairie Center

Habitat exhibits, dioramas, audio interpretation, and view of the prairie. Wetland, woodlands, and prairie environments are displayed pre-European settlement. You may also get a souvenir in our gift shop.

Where: 7993 N. River Rd., Byron

When: Open Every Day

Cost: Free

Time: Mon, Wed, Fri - 8am-4:30pm

Tues & Thurs - 8am-8pm

Sat-9am-4pm & Sun-1-4pm



Weiskopf Observatory



View the stars and planets through our 11" Celestron telescope. Experienced staff will guide you through the skies. Call for viewing conditions at 234-8535, ext. 216. Closed if cloudy.

Where: 7993 N. River Rd., Byron

Time: Dark until 3 hours after dark

When: Tuesdays & Saturdays

Cost: Free

Heritage Farm Museum

Enjoy a guided tour of this 1800s farm and museum with audio interpretation. Includes a grout house, corn crib, wind mill, and more. Come check out the new "residents!"

Open Hours: April 1 - October 31

Mon-Fri - 8am-4:30pm

Sat - 10am-4pm

Sun - 2-6pm

Self-guided tours are free. A small fee may be charged for guided tours. Closed on holidays. Call 1-815-234-8535 ext. 217 for more information.



Stone Quarry Recreation Park

Stone Quarry Recreation Park has something for everyone! Many programs and activities are offered at Stone Quarry Recreation Park all year round. Located at 6845 German Church Road, Byron. Call 1-815-234-8900 for more information.



Stone Quarry Park Amenities:

Indoor

Party Room - capacity 300

Arcade Room

Food Factory

61" & 55" Big Screen T.V.s

Billiards Table

Juke Box

Air Hockey

Outdoor

Miniature Golf Course - \$4

Batting Cages - \$1 or \$5

Indoor/Outdoor Skate Park - \$3

Water Splash Area - FREE

Sand Volleyball Pit - FREE

Picnic Shelters - \$25

Basketball Courts - FREE

Playgrounds - FREE

Horseshoe Pits - FREE

Group Outings

Birthday Parties

Company Picnics

Family Reunions

Graduation Parties

Day Camp Trips

Our Team and Your Goals A Plan for Success!



No Fee Financial Planning

- 401K's
- Stocks and Bonds
- Mutual Funds
- IRA's
- Employee Benefit Program
 - Long Term Care
- Tax Deferred Annuities
- Financial & Estate Planning
 - Retirement Products
- 457 Plan Tax Free Transfers
 - Group Medical
 - Life Insurance

With the Byron Bank Financial Services Team, you will experience personal service customized to your situation that will make you say **-WOW-** why did we keep putting off our financial planning?



Byron Bank
Financial Services

Byron 200 N Walnut 234-4075
Oregon Century 21 Bldg. 732-1528
Davis Junction 5653 N Junction Way 645-2610

www.byronbank.com

Investment Products are offered by UVEST
Investment services, member NASD/SIPC and:

Are Not FDIC Insured May Lose Value
Are Not Bank Guaranteed



Byron Forest Preserve District
7993 North River Road
PO Box 1075
Byron, IL 61010

PRESORT STANDARD
US POSTAGE PAID
BYRON IL 61010
PERMIT NO 67

POSTAL PATRON
BYRON IL 61010