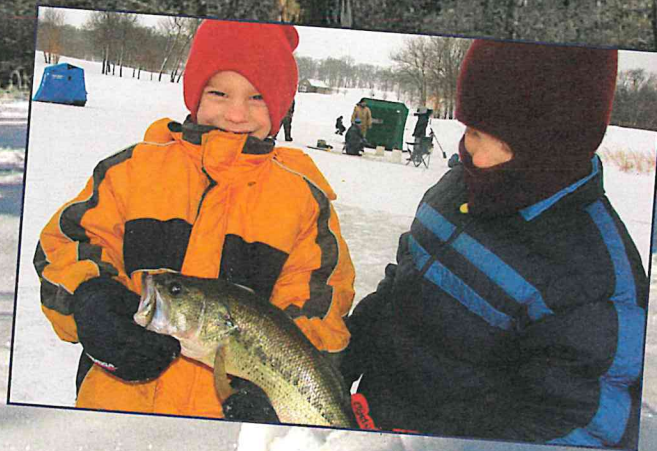
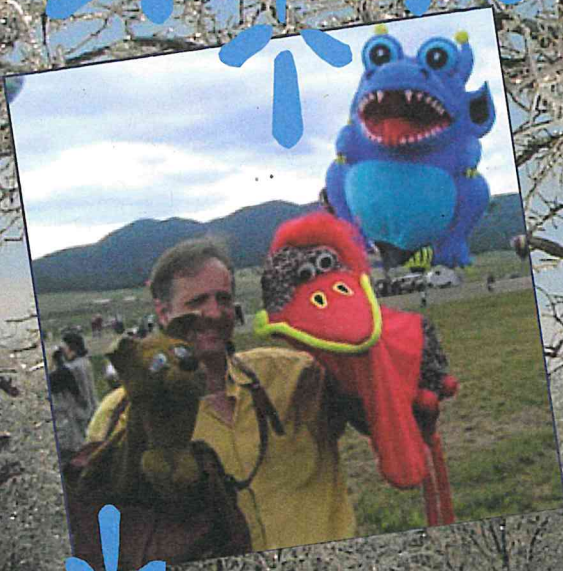


THE BLAZE

Something especially for you...



Byron Forest
Preserve District
2008-09
Winter/Spring Issue

Inside this issue...

- Maple Syrup Festival
- Easter Egg Hunt
- Free Kids Concerts
- Summer Camp

Directors' Messages

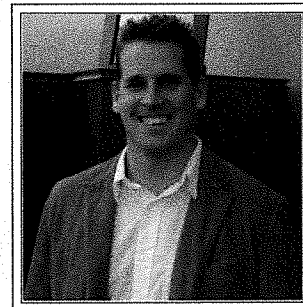
From Executive Director Todd Tucker...

The District has had a pretty good year considering the state of our economy; but, not unlike many other businesses, private or governmental, we have had to make some cutbacks and changes in our philosophies due to tighter financial times for many families and businesses. It is in these times that we should better utilize our local businesses and help our local economy. Byron and our surrounding communities have many things to offer for cultural, shopping, and recreational opportunities. I would again urge people to take a closer look at what our local communities have to offer in the way of arts, activities, and recreation that are very affordable and close. The preserve has many family activities that are low cost and can be enjoyed by all generations.

The prairie restoration crew and I recently drove to Nashville, Tennessee for the Natural Areas Conference. The conference is a great tool for the staff to sharpen their skills on exotic weed control, exotic pest control, and

to learn how and what other managers have been doing to make natural areas management better and what techniques can be applied to make our job more efficient. We also had the opportunity to visit a natural area for a day-long field trip. I chose to go to the Fall Creek Falls State Park where we went caving through part of a 15-mile long cave system. The caves were a vast expanse of large rooms and underwater stream systems that expanded far below the earth. We saw five different species of bats including the federally endangered Indiana Bat, which is also found sparsely in Illinois. The caves also have a rich history of hidden moon-shining operations, civil war hide-outs, and early man drawings. The trip was very insightful from a natural and cultural history standpoint.

Well, it's almost time for the official changing of the guard, Ed Clift will soon be a civilian and enter into a new non-governmental portion of his life. I would like to personally thank Ed for his years of service to the agency. Ed has



helped me transition from a young manager to an Executive Director; and although I feel this was a very easy job, it probably had its moments on his end, and for that, I thank him for his patience and insight along the way.

Good luck Ed in all your endeavors to come and I wish you and Beth and the kids the very best.

Thank you!

Todd Tucker,
Executive Director

Inside This Issue...

Directors' Messages	2-3
General Information	4
Summer Camp	5
Maple Syrup Festival	6
Easter Egg Hunt	6
Free Kids Concerts	7
Stone Quarry Park	8-9
Trips & Preschool	10
PrairieView Golf Club	11-13
Outdoor Adventures	14-15
Badge Workshops	16-17
Prairie Life	18
Night Life	19
Potpourri	20-21
Volunteers	22
Facilities	23

Thank You Sponsors...



**Byron
Bank**

ExelonSM

Nuclear

Byron Generating Station

**Dr. Bob & Holly Johnson
Matt Johnson Scholarship Fund**

Directors' Messages

From Executive Director Ed Clift...

Dear Friends,

My tenure as your Executive Director will conclude on December 31st of this year, after 14 years at the Byron Forest Preserve District. I have enjoyed my time here and this has become our children's hometown; so our family will continue to call Byron home and we will continue to be involved in the Byron Community for many years.

After serving in Byron, I have a lot of 'thank you's' to mention. First and foremost would be my wife, Beth, and our children, Bill and Megan, for tolerating all the meetings outside normal office hours that took me away from them on a regular basis during these years. Beth, Bill, & Megan, thanks for being so supportive during this time.

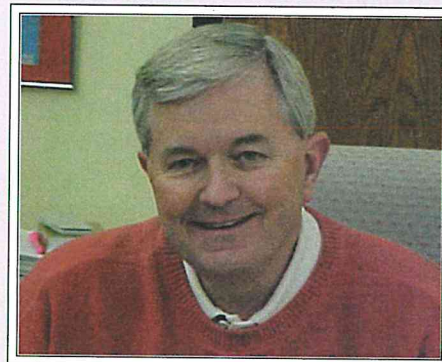
I also want to thank the 20 citizens who gave up their personal time to serve as Citizen Board Members here at the Preserve during this 14-year period. Much of what has been accomplished is a direct result of their dedication to our community and the Forest Preserve District. A big thank you goes to all of these individuals.

We also have had hundreds of citizens volunteer here at the Forest Preserve giving thousands of volunteer hours (in excess of 20,000 hours) back to the community. Many of you have worked on the Heritage Farm

Committee, Stone Quarry Recreation Park through the Byron Community Revitalization's Adult & Teen Action Committee, Prairie Restoration, Education Programs, PrairieView Golf Club, Tuesday Volunteer Group, and the Wednesday Woodworking Group. I want to thank each of you; because without you, the Forest Preserve would not be what it is today. This type of volunteerism is one of the reasons Byron is such a great community.

The overall daily success of our agency is a result of the hard work of our dedicated employees who have worked for us in the past and those who are currently employed at our agency today. I have always been blessed with outstanding staff at all of the agencies with which I have worked and it is a distinct pleasure to conclude my career with such an outstanding group of employees and individuals here at the Byron Forest Preserve. Thank you for all that you have accomplished!

Our citizens are the greatest and thank you for being tolerant and understanding of the many changes that we instituted here at the District over these years. I have appreciated all the input you have provided us and it was always considered, prior to making the final decisions. I know everyone does not always agree on every subject, but I hope that you felt that you were treated



with respect and felt that your opinion mattered in all of your dealings with the Forest Preserve.

We have also been very fortunate to have had such a supportive business community and Chamber of Commerce. Their involvement with the Forest Preserve have been positive and much appreciated - thank you.

Finally, I wish new the director, Todd Tucker, the best of luck in guiding the Forest Preserve in the future. He has been a dedicated administrative team member and will serve the District and Community well. I hope that the board, staff, and citizens will provide Todd with as much support as you have given to me during my tenure with the Forest Preserve.

Thank you all again and may God bless all of you.

Edward C. Clift
Executive Director

General Information

Jarrett Prairie Center Hours:

Mon., Wed., Fri.	8am-4:30pm
Tues. & Thurs.	8am-8pm
Saturday	9am-4pm
Sunday	1-4pm

Jarrett Prairie Center is closed:

Christmas Day, December 25
 New Year's Day, January 1
 President's Day, February 16
 Good Friday, April 10
 Easter Sunday, April 12

Administrative Offices are closed:

Christmas Day, December 25
 New Year's Day, January 1
 President's Day, February 16
 Good Friday, April 10
 Easter Sunday, April 12

Byron Forest Preserve District

7993 North River Road, P O Box 1075, Byron IL 61010
 815-234-8535 • byronforestpreserve.com

Board Meetings

The Byron Forest Preserve District Board of Commissioners meetings are held on the third Monday of each month at 7 pm at the Jarrett Prairie Center, 7993 North River Road, Byron.

Board of Commissioners

Sandy Brooks	President
Dave Flowers	Vice President
Dave Breen	Secretary
Jeff Ludwig	Treasurer
Jeff Huber	Commissioner

Who To Contact

General inquiries

815-234-8535 ext. 200

linda@byronforestpreserve.com

Behavior Policy

To ensure safe and enjoyable programs and facilities for all residents, the Byron Forest Preserve District has developed the following Code of Conduct. Participants in programs and those using facilities shall: (1) Show respect to all participants, staff, equipment, supplies and facilities; (2) Refrain from using offensive or profane language; (3) Refrain from aggressive behavior that could cause bodily harm.

The Byron Forest Preserve District reserves the right to dismiss a participant from a program if their behavior or language is deemed inappropriate by staff.

The Byron Forest Preserve District applies a caring and positive approach to discipline. Our staff will work with parents when special accommodations are necessary due to a participant's disability.

The Byron Forest Preserve District reserves the right to dismiss a participant whose behavior endangers the safety of others or causes property damage.

Administrative Staff

Todd Tucker, Executive Director
todd@byronforestpreserve.com
 815-234-8535 ext. 222

Richie Wolf, Education Supt.
richie@byronforestpreserve.com
 815-234-8535 ext. 217

Dan Beranek, Manager
 Stone Quarry Recreation Park
daniel@stonequarrypark.com
 815-234-8900

Steve Murray, Manager
 PrairieView Golf Club
pvgolfpro@hotmail.com
 815-234-4653 ext. 12

Robin Davis, Finance &
 Human Resources Superintendent
robin@byronforestpreserve.com
 815-234-8535 ext. 204

Russell Brunner, Restoration and
 Maintenance Superintendent
russell@byronforestpreserve.com
 815-234-8535 ext. 219

Michelle Lipps
 Blaze Editor, Design, & Layout
michelle@byronforestpreserve.com
 815-234-8535 ext. 224

Photography Policy

Photographs and videos are periodically taken of participants during programs, special events, trips, or at the parks.

Please be aware that these photographs may be used for Forest Preserve District publications and/or other media.

Our Mission



**BYRON
FOREST
PRESERVE
DISTRICT**

Mission Statement

Preservation ~ Education ~ Recreation

The mission of the Byron Forest Preserve District is to provide for Preservation of Open Space/Natural Resources, provide Education concerning our Natural Environment/Heritage, provide Recreational Opportunities and Enterprise Operations that are consistent with our Agency goals.

Byron Forest Preserve Summer Day Camp 2009



Field Trips
Lake LaDonna
Co Co Key
SciTech
Donley's Wild West
Lazer Quest
Field Museum
Brookfield Zoo
Gameworks
Rockford Riverhawks
Lena Pool
Volcano Falls
Burpee Museum
Lake Wopahoo



Are we going somewhere you want to go? Weekly field trip rates for non-campers is \$30! Registration is required at least one week in advance.

Register early & save money!!

All field trip fees are included in the weekly rate! Fees also include free use of Stone Quarry's facilities after hours and on the weekends while your child is enrolled in camp!



Early registration discounts:

Register January 1 - May 1 - \$105/week

Register after May 1 - \$125/week

Discount only applies for weeks paid in advance.

For more info, call Dan or Cheryl at 1-815-234-8900 or Linda at 1-815-234-8535 ext. 200.



Annual Maple Syrup Festival



Relax and enjoy this returning favorite. We'll have a pancake breakfast, maple tree tapping, hay rides, kid's crafts, and more. Co-sponsored by the Byron Kiwanis Club. Free admission. Small fee for breakfast. Get advance sale tickets at the Jarrett Prairie Center. For more information, call 815-234-8535 ext. 200.

Saturday, March 21

7am - Noon

Jarrett Prairie Center
7993 N. River Rd., Byron

Easter Egg Hunt

Hop on over to Stone Quarry Recreation Park for our Annual Easter Egg Hunt! There will be lots of prizes and candy for kids in preschool through fourth grade. This event is co-sponsored by the Byron Lions Club.

New this year, we will be cooking hot dogs on the grill for a post hunt lunch special, so stick around and feed those hungry bellies!

Saturday, April 11
11am SHARP!



~~ Free Kids Concerts ~~

Sponsored by Exelon

Saturdays • 3 pm

Jarrett Prairie Center • 7993 North River Road • Byron



Summerfield Farm

January 10

Meet all kinds of exotic animals
from this zoo-like organization.



Ventriloquist and Friends

Wayne Francis

March 14

Come and enjoy this very unique
entertainment experience.

K.N.I.B. (Keep Northern Illinois Beautiful)

February 21

Come learn all about recycling
and take home a "toolkit" of
recycled materials.



Stone Quarry Park

January
February
March
April

Tumbling Classes

Are you interested in learning the art of tumbling? Tumbling for beginners through advanced, ages 6 and up! We will open a tot class for ages 3 to 5 year-olds with adequate interest. We offer small class sizes, generally four students per class to ensure quality mat time and instructions. We strive to build strength while instilling self confidence in our students. Classes for younger age groups are available with adequate interest. For more information, please call 1-815-316-0034.

Where: Stone Quarry Park

When: Tuesdays and Thursdays
(all year round)

Time: 4 - 9 pm

Cost: \$12/hour

\$48/four classes

\$60/five classes

\$10/2nd class/wk • \$10/sibling

Ages: 6 and up

Instructor: Mary Wright Sheker



Midnight Madness

Stone Quarry will be open until midnight, so come on out and partake in some late night skateboarding, mini-golf, and other games.

Where: Stone Quarry Park

When: 8 pm - Midnight

Dates: Saturdays

Jan. 31

Feb. 28

Mar. 28

Apr. 25

Cost: \$5 / person

Ages: 6th grade and up



Middle School Dances

Mark these dates on your calendar and join your friends, DJ Ryan from Sound Productions and the Stone Quarry Crew for some fun this winter and spring!

Where: Stone Quarry Park

When: Fridays,

Jan. 9 & 23

Feb. 6 & 20

Mar. 6 & 20

Apr. 3 & 17

Time: 7 - 10 pm

Cost: \$5 / person

Ages: Middle School Only
Grades 6th, 7th, & 8th

Chaperones needed,
please call 815-234-8900!

Kids Zone

This program is perfect for moms and dads who are looking for a little free time and kids who want to have fun! Featuring activities, games, prizes, and fun in the park. Pizza and pop provided. Extra money needed for games and other concession items. Registration required.

Where: Stone Quarry Park

When: Saturdays,
Feb. 14, Mar. 7
Apr. 4, May 2

Time: 5:30 - 9:30 pm

Cost: \$10 / person

Ages: First-Fifth Grade

Min/Max: 10 / 30

Register by noon on the
Wednesday before the program.

Stone Quarry Park Hours

Winter/Spring

Monday 4-7pm

Tuesday 4-8pm

Wednesday Closed

Thursday 4-8pm

Friday 4-7pm

Saturday 11am-5pm

Sunday 1-5pm

No School Days and Half Days

Jan. 19 Noon-5pm

Feb. 13 2-6pm

Feb. 16 Noon-5pm

Apr. 9 2-7pm

Apr. 10 Noon-5pm

Winter & Spring Break

Winter Break -

Dec. 20-23 & Jan. 2-4
11am-5pm

Spring Break -

Mar. 23-27
11am-5pm

Attention Parents & Babysitters!

Stone Quarry has Wi-Fi! Stone Quarry Park offers free wireless access. Bring your kids out to the park for some fun while you catch up on work projects or personal business. Laptops not provided.

Stone Quarry Park

Mother-Daughter PJ Party

Ready for another fashion show? Dress comfortably in your PJ's and slippers and come to a girls night "in". We'll be watching a chick flick of course while we prepare ourselves for a night on the red carpet! Girls, this is your chance to do mom's hair, makeup, and nails! And, of course, we will take time for dessert! Please bring your own beauty supplies with you.

Where: Stone Quarry Park
When: 6 - 8 pm
Dates: Saturdays
Feb. 21
Mar. 21
Apr. 1
Cost: \$10 / couple and
\$2 / add'l daughter

Min/Max: 10 / 30
Ages: 6th grade and up
Register by noon on the
Wednesday before the program.

Daddy-Daughter Date Night

Hey Daddy-O, are looking to get out of the house to do something fun with your daughter? Join us for a fun-filled date featuring games, prizes, and pizza!

Where: Stone Quarry Park
When: 6 - 7:30 pm
Dates: Saturdays
Jan. 24
Apr. 18

Cost: \$10 / couple and
\$3 / add'l daughter
Min/Max: 5 / 15 couples
Ages: 6th grade and up
Register by noon on the
Wednesday before the program.

Family Game Night

All right moms and dads, round up the kids and get out to the Quarry for a night of family fun! We will be providing games such as Monopoly, Risk, Connect Four, Pictionary, and Taboo. Pizza and pop will be provided. Registration required.

Where: Stone Quarry Park
When: 6 - 8:30 pm
Dates: Saturdays
Jan. 17
Feb. 14
Mar. 14

Cost: \$5 / person
Min/Max: 4 / 12 families
Ages: All
Register by noon on the
Wednesday before the program.

Ice Cream Social

This is the ideal program for all grade school kids who like ice cream and hangin out with their best buds. Grab your friends and come out to the park for some fun playing games, jamming Guitar Hero, riding bikes or skate boards, and playing with your friends! Ice cream included! Registration required.

Where: Stone Quarry Park
When: 8 pm - Midnight
Dates: Fridays
Feb. 27
Mar. 13
Apr. 10

Cost: \$10 / couple and
\$3 / add'l daughter
Min/Max: 5 / 15 couples
Ages: 6th grade and up
Register by noon on the
Wednesday before the program.



Leisure Kite Fly Day

April is Leisure Kite Month, so grab your kite and your friends and come out to the park to celebrate! There is ample room with little to no obstacles to hinder your kite flying abilities! Registration is not required.

Where: Stone Quarry Park
When: 1:30-3:30 pm
Dates: Saturday, Apr. 25
Cost: \$3 / kite
Ages: All

Paintball Playdays Kickoff!!

Stone Quarry is sponsoring Winstead Outdoors in an effort to provide affordable paintball opportunities for individuals of the Ogle County area. We have three awesome fields to choose from and will supply all the gear needed to play! The cost includes admission for two games, 200 rounds of paint, helmets with eye protectors, neck protectors, chest protectors, one tank of CO2 and a paintball marker (gun). Extra paint and CO2 are available for more games at a minimal fee. We also offer group rates for private parties and corporate outings.

Where: Stone Quarry Park
When: Noon - 5 pm
Dates: Saturday, Apr. 18
Cost: \$20 / person
Ages: 10 and up



*Schedule your paintball
birthday party today!
Call 815-234-8900.*

Summer Day Camp 2009

Sign up now and save money!

We're offering an early registration incentive. See the Summer Camp page for more information!

Trips & Preschool

January
February
March
April

Illinois Bass Pro Shop

Join us as we head to Gurnee and Bolingbrook for some great shopping.

Where: Meet at the Jarrett Prairie Center
When: Thursday, **February 12** (Gurnee)
Monday, **February 16** (Bolingbrook)

Time: 10 am - 5 pm

Cost: \$5 / person

Ages: All

Min/Max: 5 / 14

Register by noon on February 11 & 13



Bass Pro Shop Headquarters in Missouri

We're heading to Springfield, Missouri to visit the largest Bass Pro Shop in the world! Fee includes hotel and transportation. This is definitely an all day experience.

Where: Meet at the Jarrett Prairie Center

When: Friday-Sunday, January 23-25

Time: Depart at 9am.

Cost: \$210/person & \$300/couple

Ages: Adults

Min/Max: 5 / 12

Register by noon on January 3.

St. Louis

Join us on this trip to this exciting city to see the zoo, the Arch, the Budweiser Brewery, and more! Fee includes hotel, transportation, and tickets.

Where: Meet at Jarrett Prairie Center

When: Friday-Sunday, **April 17-19**

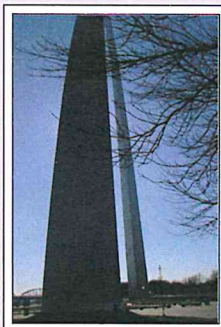
Time: Depart at 9am

Cost: \$225/single or \$300/couple

Ages: All

Min/Max: 5 / 11

Register by noon on March 27.



Adventure Club

This summer program is geared toward preschool age children (3-6 years old). Each two-week session has a theme, and will include games, crafts, stories, and outdoor play. Children are provided a fun, safe, and comfortable environment with our caring staff. Call 1-815-234-8535 to register today!

Session #1	June 8-18	School of Hard Rocks
Session #2	June 22-July 2	Deep Sea Creatures
Session #3	July 6-16	My Friendly Shadow
Session #4	July 20-30	Eric Carle Stories

Monday/Wednesday - 9-11am

Tuesday/Thursday - 9-11am

\$35/session

Preschool

Get your kids ready for kindergarten by enrolling them in our structured preschool classes. The Tuesday/Thursday classes are geared towards 3-year-olds and younger 4-year-olds. The Monday/Wednesday/Friday classes are geared towards older 4-year-olds and younger 5-year-olds. Children must be at least 4 years old to attend the three-day class. They must be at least 3 years old to attend the two-day class. Children must be potty trained. Immunization records are required for students.

You may register your child at anytime throughout the year if your child's birthday is later in the year. Please call 815-234-8535 ext. 200 for more information.

Where: Jarrett Prairie Center

Ages: 3 - 5 years

When: Mon/Wed/Fri or

Tues/Thurs

Time: 9-11:30am or 1-3:30 pm

Min./Max: 6 / 20 - M-W-F

6 / 14 - Tu-Th

Cost: \$85/month-M/W/F or

\$70/month-T/Th



Registration is ongoing throughout the year.

PrairieView GC

2009 Season Golf Passes on Sale

Season golf passes are now on sale at PrairieView Golf Club. A discounted rate is offered if you choose to purchase your 2009 season golf pass before Christmas. Please refer to the fees below that indicate the large savings by purchasing your season pass early.

	Before 12/23/08	After 12/23/08
Resident-Single Pass		
Adult	\$480	\$580
Senior	\$330	\$430
College Student	\$215	\$315
Junior	\$170	\$230
Resident-Couple/Family		
Adult	\$860	\$960
Senior	\$590	\$660
Out of District - Single		
Adult	\$590	\$680
Senior	\$390	\$490
College Student	\$250	\$350
Junior	\$190	\$250
Out of District - Couple/Family		
Adult	\$960	\$1060
Senior	\$690	\$760

VIP Vouchers

Instead of or in addition to a season golf pass, PrairieView's VIP program is an outstanding offer. Vouchers can be purchased in four increments starting at \$200 and up to \$800 and are good for a two-year period. With a VIP Voucher, golfers receive discounts off regular priced green, cart, and range fees. Please see the chart below for a complete listing of your savings.



	\$200	\$400	\$600	\$800
Green Fee Discount	5%	10%	15%	20%
Cart Fee Discount	15%	20%	25%	30%
Range Fee Discount	40%	40%	50%	50%

2009 Golf Fees

Weekday Green Fees

18 holes	Resident	\$19
	Non-resident	\$27
	Sr./Jr. Resident	\$14
	Sr./Jr. Non-res.	\$17

9 holes	Resident	\$12
	Non-resident	\$17
	Sr./Jr. Resident	\$10
	Sr./Jr. Non-res.	\$13

Twilight	Resident	\$12
	Non-resident	\$17

Weekend Green Fees

18 holes	Resident	\$23
	Non-resident	\$33
	Sr./Jr. Resident	\$16
	Sr./Jr. Non-res.	\$21

9 holes	Resident	\$15
	Non-resident	\$20
	Sr./Jr. Resident	\$12
	Sr./Jr. Non-res.	\$15

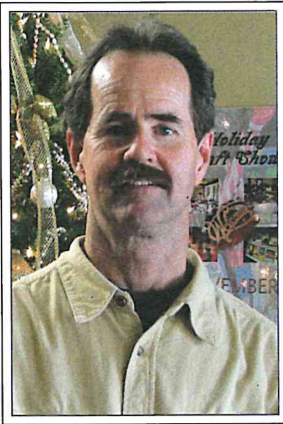
Cart Fees (per person)

18 holes	\$15
9 holes	\$10
Sr./18 holes	\$12
Sr./9 holes	\$8
Twilight	\$10



Steve Storz, CGCS

Golf Course Superintendent- PrairieView Golf Club



I moved to Byron in 1964, graduated from high school in 1967. Since I really liked chemistry in school, I chose that as my college major. My mother was proud of me! Two circumstances caused me to change that decision during my first semester in college. 1) In the summer of 1967 I had the opportunity to work on the "grow-in" crew at Elliot Golf Course located just east of Rockford near the Clock

Tower Inn. I loved it! 2) My basic chemistry courses at Missouri University in Columbia, Missouri convinced me that spending my time cooped up in a lab wearing a lab coat was definitely not me. I changed my course of study to Ornamental Horticulture with a turf major and transferred to the U

of I / Urbana campus at the end of my freshman year. Degrees in Turf Management were unheard of in 1969. I think my mother cried when I told her that her little chemist was now going to college to learn how to "grow grass".

During the summers, I worked as an intern on the grounds crew at Rockford Country Club. After college, in January of 1972, RCC hired me as their assistant golf course superintendent. In January of 1973, my boss, Al Needham, retired and I became head golf course superintendent of the prestigious Rockford Country Club at the ripe old age of 23.

I can't continue until I tell you about two other life changing events that occurred in 1973. In April, I asked Jesus Christ to be my Lord and Savior. On June 16th, I married Cindy Nighswonger, life long resident of Byron. She had a degree in special education from Illinois State University.

The 70's were a tumultuous time in the golf industry. Decades-old maintenance procedures fell by the wayside as the rapid-paced modernization of the golf industry began. New, safer pesticides began to replace dangerous products like lead arsenate, mercuric chloride and the chlorinated hydrocarbon

chlordane. In 1974, glyphosate, a product I had observed in turf trials at U of I was granted an EPA commercial use license. The trade name for glyphosate- Roundup! It literally revolutionized nonselective weed control. New "light-weight" riding machines began to replace the old labor intensive walk behind equipment. In fact, Rockford Country Club was at the forefront of this move. It was the first golf course in this region to use triplex riding greens mowers, riding sand bunker rakes and (get this!) in 1975, the Weedeater!!

In 1978, I left RCC to go full-time into a lawn chemical/landscape business. Cindy, who had since earned an Associate's degree in landscape design, joined me. In 1983, we sold the business and left the turf grass industry until late 1990. At that time, the Byron Forest Preserve hired me as the grow-in superintendent at its newly constructed golf course, PrairieView.

The rapid development of new procedures, equipment, and chemicals had continued through the 80's. As soon as the Forest Preserve hired me, I began my quest to increase in knowledge.

My national association, "The Golf Course Superintendents Association of America (GCSAA) offered over 100 courses and seminars ranging

...I became head golf course superintendent of the prestigious Rockford Country Club at the ripe old age of 23.

from the latest turf varieties to agronomy to pest control to people management to pesticide safety to time management and more. In the course of my studies, I decided to set my goal even higher than just increase in knowledge. I began working towards the designation of Certified Golf Course Superintendent. At that time, there were 1500 Certified Superintendents in the US, about 10% of all superintendents. In order to apply, a certification candidate must have maintained a class A status for three years and have earned a minimum of 5 education points. Upon application for the process, each candidate had one year to pass a 6-hour written test and then have two current certified superintendents (attestors) visit their golf course and evaluate it. Each attestor had to turn in a written report grading the applicant's course at least 85%. I accomplished all that and on January 25, 1994, became a CGCS. To recertify in five years, a CGCS must have earned a specified number of education points during the period or pass the certification exam again. Recently, I was recertified for the third time. I am now officially a CGCS until January 25, 2014.

PrairieView GC

Jim Marinelli

I am the new Assistant Pro/Tournament Coordinator for PrairieView Golf Club. I am originally from Byron, and I graduated from Byron High School in 2002.

I started my college at Winthrop University in South Carolina. After two years, I transferred to St. Ambrose University and graduated in 2007 with a Bachelor's Degree in Sport Management. I have been around golf for many years playing in various junior, high school, and college tournaments across the country.

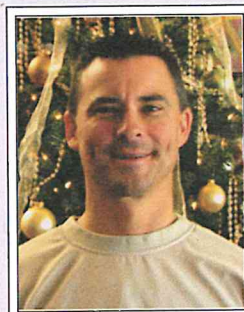
I started learning how to play golf when PrairieView Golf Club opened in 1991. I am now excited to return to start my professional career. I am currently engaged to be married in 2009 to Jacey Schairer who is also a Byron High School alum. I am excited to be a part of the Byron Forest Preserve, and look forward to seeing everyone at PrairieView!!



Murray Qualifies for PGA National Tournament

Steve Murray, PGA Professional at PrairieView Golf Club qualified for the 2009 National Club Professionals Championship. The tournament will be held at Twin Warriors Golf Club in Santa Anna Pueblo, New Mexico in June of 2009. For PGA Members, the Club Professionals Championship is the most prestigious event club professionals can play in next to qualifying for a PGA Tour event. The top 20 finishers in the Club Professionals Championship receive invitations to participate in the 2009 PGA Championship at Hazeltine National Golf Club in Minnesota. The Club Professionals Championship in June will be televised on the Golf Channel.

Murray earned his spot in the 2009 Club Professionals Championship by finishing 5th in the 2008 Illinois Section PGA Championship held at Medinah Country Club. His score of 215 (73-72-70) was his best finish in eight years as a PGA Member.



E-mail Contacts

Starting in 2009, PrairieView Golf Club will be revamping its current website including a full email list to help better communicate with its customers. If you would like to be on PrairieView's email list, go to the current website (prairieviewgolf.com) and go to the contact us section. Please send us an email and indicate that you would like to be added to the list or call or stop by to update your email address. By adding your address to the list, you will be notified of upcoming specials, sales, course conditions, and upcoming events to help you more fully enjoy the premier golf facility in Northern Illinois.

**Get
in the
LOOP!**

Outings, Parties, and Banquets

Golf outings are not the only type of events held at PrairieView Golf Club. All events such as birthdays, weddings, baby showers, and even corporate parties can be hosted. PrairieView can accommodate any type and size of event from small groups in the Prairie Grass Pub to larger groups in the banquet hall. Don't miss a chance to have your next event at PrairieView. For information on all of our rooms or to book your 2009 golf outing, party, or banquet, call 815-234-4653 today!



for PrairieView

The Men's Golf Association at PrairieView accomplished a clean sweep in the three major events on their schedule in 2008. They won interclub matches with both Timber Pointe Golf Club and Aldeen Golf Club earlier this summer. Both interclub matches were hosted at PrairieView. They also won the Lincoln Highway Tournament at Timber Creek Golf Course (formerly Dixon Country Club).

The Lincoln Highway Tournament is one of the oldest running tournaments in Illinois and is comprised of 12 different facilities along the Lincoln Highway.

Members on the 2008 Lincoln Highway team were Chris French, Jake Schertz, Brian Silvers, Eric Lindgren, Dan Cameron, and Jake Nicholson.

Watch for a complete schedule of events and information about the Men's Golf Association in the summer edition of the Blaze.

Outdoor Adventures

January
February
March
April

Ice Fishing

Bring your equipment for this unique outing on the golf course. Call ahead to confirm ice conditions.

Where: Meet at the Jarrett Prairie Center
When: Sunday, **February 15**
Saturday, **February 21**
Time: 9 am - Noon
Cost: \$5 / person (free for under 5 years old)
Ages: All
Min/Max: 5 / 50

Register by noon on February 13 & 20.

Hunter Education Class

This 10-hour class covers first aid, wildlife management, and more. You must pass a written test for certification.

Where: Jarrett Prairie Center
When: January 12, 14, 16
March 2, 4, 6
Time: 6 - 9 pm (Mon. & Wed.) &
6 - 10 pm (Fri.)
Cost: Free
Ages: All - Must be able to pass written test.
Min/Max: 5 / 80

Register by noon on January 9 & February 27.

Earthday Walk

See the spring flowers as they beautify the woodlands.

Where: Meet at the Maintenance Center
When: Saturday, **April 25**
Time: 10 am
Cost: Free
Ages: All
Min/Max: 5 / none

Register by noon on April 24.


**EARTH DAY
EVERY DAY**

Boater SafetyClass

This 8-hour class will provide your safety certification.

Where: Jarrett Prairie Center
When: Monday & Wednesday, March 16 & 18
Time: 5-9 pm
Cost: Free
Ages: All
Min/Max: 5 / 30

Register by noon on March 13.

 Printed on 100% recycled paper.

Beekeeping Workshops

Learn techniques and tools of the trade. Ask about our mentoring program.

Where: Jarrett Prairie Center
When: Sundays
January 11, **February 8**,
March 8, **April 19**
Time: 2 - 4 pm
Cost: \$2 / person
Ages: 3 and up
Min/Max: 5 / 25

*Denotes outdoor workshops, bring your bee suits!

3D Archery

Use our new 3D animal targets to practice for the hunt. Rotate through 13 targets.



Where: Meet at Jarrett Prairie Center
When: Sunday, March 22 or 29
Time: 1 - 3 pm
Cost: \$5 / person
Ages: 8 and up
Min/Max: 5 / 20

Register by noon on March 20 & 27.

For The Birds

Learn how to identify winter birds and get a free bird feeder. One feeder per family.

Where: Meet at the Jarrett Prairie Center
When: Wednesday, **February 25**
Time: 6 - 8 pm
Cost: \$2 / person
Ages: All
Min/Max: 5 / 30

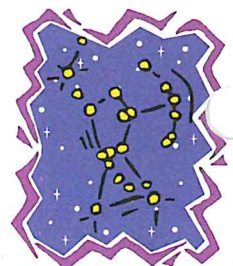
Register by noon on February 24.

Wonders of Orion

See some of the amazing spectacles in this constellation.

Where: Weiskopf Observatory
When: Friday, **February 13**
Time: 7 pm
Cost: \$2 / person
Ages: Families
Min/Max: 5 / 20

Register by noon on February 12.



Outdoor Adventures

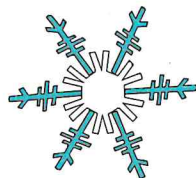
Snowy Adventures!

Evening Cross Country Skiing

Novice to expert levels welcome. Dress warmly to experience the evening woodland as we cross-country ski under a nearly full moon.

Where: Meet at Jarrett Prairie Center
When: Friday, January 23
Time: 5:30-8 pm
Cost: \$3 / person
Ages: 8 and up
Min/Max: 5 / 15

Register by noon on January 21.



Snow Melt Artwork

Where: Meet at Jarrett Prairie Center
When: Saturday, February 21
Time: 10 am - Noon
Cost: \$2 / person
Ages: 6-12
Min/Max: 5 / 20

Register by noon on February 18.



Snow Sculptures

We'll supply the tools as long as mother nature supplies the snow. Dress for the weather and create some fantastic artwork for the enjoyment of our visitors to the Jarrett Prairie Center.

Where: Meet at Jarrett Prairie Center
When: Saturday, March 14
Time: 2 - 4 pm
Cost: \$2 / person
Ages: 7-12
Min/Max: 5 / 20

Register by noon on March 11.



Spring Boat Float

We will make boats from natural materials (and maybe a little string) and set them afloat! See how long your will stay on the water! We'll let them go on the Rock River (or the pond if the river's high). Prizes will be awarded for the boat that stays upright the longest.

Where: Jarrett Prairie Center
When: Saturday, April 18
Time: 1-3pm
Cost: \$2 / person
Ages: 8 and up
Min/Max: 5 / 20

Register by noon on April 15.



Spring Break Camp

Kids will enjoy winter activities such as sledding and building snow forts (snow permitting), arts and crafts, and games, and spend a busy week off school meeting new friends and trying interesting things.

Where: Jarrett Prairie Center
When: Monday-Friday, March 23-27
Time: 9am-4pm
Cost: \$100 / person
Ages: 6-12
Min/Max: 8 / 20

Register by noon on March 13.

Earthkeepers for Homeschoolers

This fantastic earth education program is perfect for homeschoolers. Students learn about the cycling of materials, energy flow, connections between living things, and change over time. They also experience the natural world through journaling, sensory activities, and exploratory hikes. During the three days, students earn real working keys that they keep as they complete activities for knowledge (K), experience (E), yourself (Y), and sharing (S).

Where: Jarrett Prairie Center
When: Wednesday-Friday, March 11-13
Time: 9am-4pm
Cost: \$40 / person
Ages: 8-12
Min/Max: 5 / 20

Register by noon on March 4.

Badge Workshops

Boy Scouts

Boy Scout Badge - Soil & Water

Where: Jarrett Prairie Center
 When: Wednesday, January 21
 Time: 5-8 pm
 Cost: \$5 / scout
 Ages: 10 and up
 Min/Max: 5 / 30

Register by noon on January 20.

Boy Scout Badge - Indian Lore



Where: Jarrett Prairie Center
 When: Wed., **February 18**
 Time: 5-8 pm
 Cost: \$5 / scout
 Ages: 10 and up
 Min/Max: 5 / 30

Register by noon on February 17.

Webelos

Webelo Badge - Forester

Where: Jarrett Prairie Center
 When: Monday, January 26
 Time: 6 - 8 pm
 Cost: \$5 / webelo
 Min/Max: 5 / 25

Register by noon on January 23.

Webelo Badge - Naturalist

Where: Jarrett Prairie Center
 When: Monday, **February 9**
 Time: 6 - 8 pm
 Cost: \$5 / webelo
 Min/Max: 5 / 25

Register by noon on February 6.

Brownies

Brownie Try-It - Science in Action

We'll go on a science and technology scavenger hunt, make glop (and gloop), and try different science experiments for this badge.

Where: Jarrett Prairie Center
 When: Tuesday, January 20
 Time: 6-8 pm
 Cost: \$5 / brownie
 Ages: Brownies
 Min/Max: 8 / 20

Register by noon on January 16.



Brownie Try-It - Eco-Explorer

We'll use our senses to explore nature to earn this badge. Please dress to be outdoors part of the time.

Where: Jarrett Prairie Center
 When: Saturday, **February 21**
 Time: 1-3 pm
 Cost: \$5 / brownie
 Min/Max: 8 / 20

Register by noon on February 18.

Brownie Try-It - Earth and Sky

We'll make a sun dial, a cloud picture, and a rock to earn this badge.

Where: Jarrett Prairie Center
 When: Thursday, **April 2**
 Time: 5:30-7:30 pm
 Cost: \$5 / brownie
 Min/Max: 8 / 20

Register by noon on April 1.



If you have an idea for a program, please call Dan at 1-815-234-8900 or Richie at 1-815-234-8535 ext. 217.

Badge Workshops

Junior Girl Scouts

Junior Girl Scout Badge - Your Outdoor Surroundings

We will complete activities to earn this badge, including hiding a geo-cache (a box with a journal that other visitors will try to find later). We'll cross country ski if there's snow, and hike if there's not. Please dress to be outdoors, though we will take a break inside with some complimentary hot chocolate.

Where: Jarrett Prairie Center
When: Saturday, January 17
Time: Noon - 3 pm
Cost: \$5 / scout
Min/Max: 8 / 20

Register by noon on January 14.



Junior Girl Scout Badge - Frosty Fun

We will make snow sculptures and snow paintings, become snow detectives, and learn how to cross country ski for this badge. We'll take lots of indoor breaks to warm up with hot chocolate, but please dress to play in the snow!

Where: Jarrett Prairie Center
When: Saturday, January 24
Time: 1 - 4 pm
Cost: \$5 / scout
Min/Max: 8 / 20

Register by noon on January 21.

Scout Groups:

Do you need a different date or badge?

If your scout group needs a different badge or workshop date, please call us to schedule another workshop. A minimum number is required. Please call Richie Wolf at 1-815-234-8535 ext. 217.

Junior Girl Scout Badge - Jeweler

We'll make beads from Fimo, grapevine, and other materials and then put them together into fantastic jewelry for this badge.

Where: Jarrett Prairie Center
When: Thursday, February 12
Time: 6 - 8:30 pm
Cost: \$5 / scout
Min/Max: 8 / 20

Register by noon on February 10.

Junior Girl Scout Badge - Science Discovery

We will make a kaleidoscope, mix basic chemicals, and take a short trip to the river to fill out our stream health checklist. Please wear shoes that can get muddy!

Where: Jarrett Prairie Center
When: Saturday, April 4
Time: 1 - 4 pm
Cost: \$5 / scout
Min/Max: 8 / 20

Register by noon on April 1.

Cross Country Skiing for Girl Scouts

Girls Only! We'll spend a short time learning to navigate on cross country skis, and then get out on the trails! Enjoy the woods on a quiet, if chilly, winter afternoon.

Where: Jarrett Prairie Center
When: Saturday, February 14
Time: 1 - 4 pm
Cost: \$2 / scout
Ages: 6 and up
Min/Max: 5 / 18

Register by noon on February 11.



From a Prairie to a Woodland and Back Again

By Russell Brunner, Superintendent of Restoration

Recently, a wooded hillside at the edge of the Byron Forest Preserve's Jarrett Prairie and alongside the PrairieView golf course was removed. Why would a Forest Preserve be cutting down trees? That is a fair question to ask. The short answer is that aggressive and invasive trees and shrubs were growing in place of a historic prairie, and we are simply restoring the native habitat that existed there. It is a somewhat longer answer to explain how a native Illinois prairie can become a dense woodland and why returning the young woodland to the native prairie is proper management.

Prior to European settlement in Illinois, Ogle County consisted of a diverse mix of habitats from shortgrass prairies to oak savannas. In most cases, these native plant communities depended on occasional fire to maintain their structure. The fires also kept fire intolerant species from invading the prairies and oak areas. Our Jarrett Prairie consisted of a mix of shortgrass dolomite prairies and oak savannas/woodlands. After settlement, fires that once occurred naturally or were started by Native Americans ceased, and most of our native prairies were lost to all types of development. In a few cases, small prairie sites survived due to light grazing, occasional fire, and, most commonly, because of steep topography making agricultural use difficult. In most cases, the prairie areas that were not directly converted to agricultural use were grazed heavily, killing the prairie plants. Some areas were converted into other development, while some followed natural succession without fire into full-grown woodlands.

The last example is what happened here in many areas of the Jarrett Prairie and throughout our region. In the long period between settlement and now, many of our rare prairies have become overrun with tree and shrub species taking advantage of 150 years (or more) without fire. After a number of years, an area that was once a diverse prairie can become a crowded woodland. These woodlands tend to consist of mostly undesirable tree and shrub species, and support many of our areas invasive plants.

This is exactly the case of the now cleared wooded hillside. Due to a number of factors including the elimination of fire and lack of grazing, this former prairie was slowly taken over by aggressive woody plants and introduced invasive species. Over time, all the sun loving prairie plants were shaded out and replaced by these unnatural invaders. In healthy, native woodlands, one would expect to see a mix of hickory and oak trees, but

the small woodland contained box elder, Chinese elm, silver maple, hackberry, and the super-aggressive Eurasian honeysuckle shrub. This contrast is a sure sign of a former prairie being invaded by undesirable species. This area directly borders one of the highest quality prairie remnants on the preserve, and an endangered prairie species is found only a few feet from the now cleared area. The shade that was created by these trees and shrubs threatened the rare prairie plants around it.

Best management guidelines call for the removal of these successional areas and to replant the native prairie species that existed there before settlement and before fire suppression. This



process will protect the surrounding native and rare prairie species. The new prairie planting will also provide additional space for the rare plants to grow and additional habitat for many species of

Why would a Forest Preserve be cutting down trees?

rare and declining grassland birds to nest in.

While we are named a Forest Preserve District, our mission is not to simply plant and grow as many trees as possible. Our goal, just like all of the Forest Preserve Districts in northern Illinois, is to protect all of our region's native plant and animal communities and to manage them appropriately. In the prairie state, this often times requires removing some trees, bushes, and brush and returning these areas back to rare native prairie species. This situation is common in all of our area's nature preserves as former prairies have been taken over by aggressive woody species and oak woodlands have become overcrowded with the same aggressive and invasive plants. The next step will be seeding the hillside with native prairie species. By the end of the next growing season, many prairie species will be flourishing in a place they have not for decades. As time passes and our efforts are realized, the land will return to a diverse prairie supporting many native plants, wildflowers, and grassland birds, just as it once did.

If you have further questions or concerns about the Byron Forest Preserve District's natural areas, please feel free to contact me at 815-234-8535x219 or russell@byronforestpreserve.com.

Night Life

Prowlers of the Night

By Austin Webb, Restoration Technician

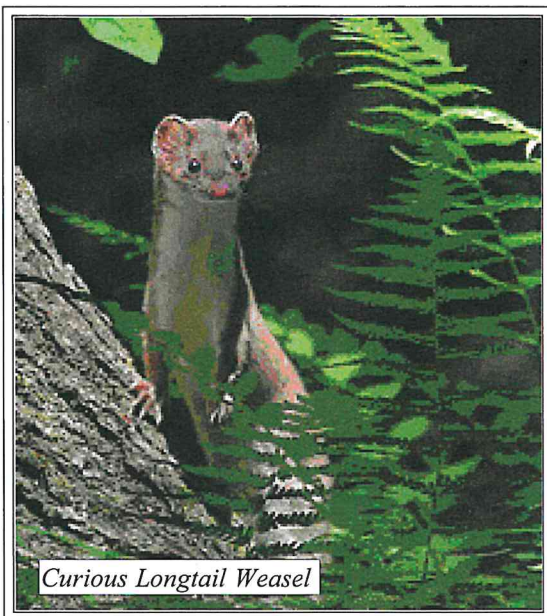
The body of a mouse, possessing two evenly placed puncture wounds at the base of the skull, lay lifeless along a hiking trail at the Forest Preserve. Although the cause of death is quite evident, there is no sign of the assassin and the case goes cold. Days later, in the dim sunlight of a cloudy morning, two elongated mammalian figures slink and weave their way across a blacktop trail entrance near the Jarrett Prairie Center while the summer crew and I watch inquisitively from our ATV. The shadowy bandits were small, but their movements and shape were distinctively different from the common thirteen-lined ground squirrel. Like fugitives on the run, the figures disappeared swiftly into the cover of the prairie. A mental note of the creatures' appearances and a consultation with a field guide on mammals and alas we had discovered the identity of these mysterious critters: *Mustela frenata*, commonly known as the Longtail Weasel, a predator of mice and other small rodents which brings instantaneous death to its prey by piercing the base of the skull.

Weasels, minks, and ferrets belong to the family Mustelidae, and the Longtail Weasel sighting has not been the first sign of the presence of these types of small mammals in the area. In fact, just this spring the body of a weasel-



A lone Mink along a stream bank

shaped mammal with a dark, downy coat and white chin patch was found along Route 2 just south of Byron. This mammal was unmistakably a Mink, a relative of the weasel which makes its den along stream banks, feeding on everything from rabbits to frogs and crayfish. Similarly, local hunters claim to have spotted the smaller cousin of the Longtail Weasel, the Least Weasel, wrestling or foraging for food in open woodlands. The weasels and mink are both primarily nocturnal predators, making encounters with people very rare. However, early winter provides an excellent opportunity to capture a glimpse of these creatures, as fresh snowfall makes tracking and spotting them easier. Once deeper snow advances with the heavy onset of winter, the detection of their presence once again subsides, with a decrease in active behavior. Consequently, it is anticipated that as the forest preserve continues to create habitat for these native mammals, their occurrence in our area should increase, and more sightings of these elusive night stalkers can be expected.



Curious Longtail Weasel

Protect and Conserve...

As part of our efforts to conserve natural resources and our mission at the Byron Forest Preserve, the Blaze is being printed on 100% recycled paper beginning with this issue. We encourage everyone to find ways to protect our natural environment through recycling and reusing to make less of an impact on our resources.

Potpourri

Birthday Parties

Jarrett Prairie Center

Themes: Tea Party, Native Americans, Sky's the Limit, Goodness Snakes, Creepy Crawlies, and Where Do Butterflies Go When It Rains? Call 815-234-8535 x217 to schedule your party.



Deluxe Party - \$75 (add'l child-\$5 each)
(program, cake, ice cream, tableware for 12, & banner)

Standard Party - \$45 (add'l child-\$5 each)
(program only for 12)

Stone Quarry Recreation Park
also offers birthday parties.

For details and costs, please call 815-234-8900.

Recycling Station

The Byron Forest Preserve District has a mission to provide for preservation of natural resources, to provide education about natural and cultural heritage, and to provide recreation. The District developed a recycling station and is educating hundreds of students on recycling through the International Earthkeepers program. Materials from the recycling station are collected and sorted twice per month, producing up to three tons of recyclable material like cardboard, glass, newspaper, plastic, and metals. The cost of hauling is covered through a cooperative agreement with the Ogle County Solid Waste Management Department.

The station accepts glass, aluminum, plastic #1-5 & #7, tin, steel, mixed paper, cardboard, and newspaper. The bin is located in the maintenance parking lot at 7993 N. River Rd. in Byron. The station is open during daylight hours seven days per week. Please recycle responsibly by leaving the area cleaner than when you arrived. **You no longer need to separate the items in each bin.**

Field Trips

to the Natural History Museum,
Weiskopf Observatory, & Heritage Farm Museum

Scouts, schools, and senior groups are welcome to the Forest Preserve for an educational and fun guided tour of our great museums. Staff welcome and give tours for the low cost of \$1.50 per person with a minimum of \$30 per group. We offer many sessions to choose from including prairie ecology, astronomy, and museum tour. Call 815-234-8535 x217 to schedule your next outing with us.

Outreach

We offer educational programs to any group including retirement homes and nursing facilities for a small fee. Using our nature staff and nature stuff, we come to you and deliver exciting and educational programs including Birds of a Feather, Indian Life (with traditional dress), and Animal Encounter (with live animals). Call today to book your next on-site program.

Rare Bird Alert Hotline

The Byron Forest Preserve is hosting a "Rare Bird Alert" hotline. Call 1-815-234-8535 ext. 203 to hear updated reports or to leave a message about where, when, what, and how to spot a rarity that you've found.



Canoe Rentals

We rent canoes. Just call us with your date and number of canoes needed. We'll haul you upstream on the Rock River and accompany you back to your vehicles at the River Park parking lot on River Road across from Heritage Farm.

Canoes are \$25 each and include paddles and life jackets. Call Richie at 815-234-8535 ext. 217 for this unique and fun outing!

Potpourri

Green Guide

The Ogle County Solid Waste Management Department has recently published the Ogle County Waste Disposal & Recycling "Green Guide" to help residents reduce waste, recycle more, and find ways to safely dispose of different types of waste.

For more information on the "Green Guide", please call Reita Nicholson at 815-732-4020 or email at rnicholson@oglecounty.org.

New Green Award

The Byron Forest Preserve and the Byron Chamber of Commerce are teaming up to present an annual **Green Business Award** for the community of Byron. The award will be presented at the Annual Chamber of Commerce Dinner and Reception in the spring of 2009. If you know a business that's a member of the Chamber who shows a commitment to the Earth through their business practices, please nominate them by contacting Richie Wolf at 815-234-8535 x217. The criteria could involve anything "green" like planting native landscaping around the business, office recycling, or even conserving electricity during non peak times. Let's reward the business community for leaving a lighter carbon footprint.

New Playground is a Big Hit!!



The new playground located near the Jarrett Prairie Center finally opened for play in late summer. As you can see, preschoolers have enjoyed it very much since opening!



Winter Fun!

Bring your little ones out to the sled hill then they can enjoy some time on the new playground too!



Summer Day Camp 2009

*Sign up now and
save money!*



*We're offering an
early registration incentive.
See the Summer Camp page
for more information!*



Volunteers, Etc.

Join Our Community of Volunteers

*Each person who gives of themselves,
gives to themselves.*

Tuesday Morning Volunteer Group

Come join us for a time of visiting, refreshments, and fun indoor projects.

Where: Jarrett Prairie Center
7993 N. River Rd., Byron
When: First Tuesdays
September-April
Time: 8:30-11 am
Cost: Free
Ages: All



Wednesday Woodshop Group

Come join the area men for coffee, and the opportunity to use your skills in carpentry and woodworking. New woodshop volunteers check in at the Jarrett Prairie Center before going to the Woodshop.

Where: Maintenance Woodshop
7993 N. River Rd., Byron
When: Wednesdays, Year Round
Time: 9-11 am
Cost: Free



Individual and Family

The Byron Forest Preserve has several volunteer opportunities for individuals and families interested in sharing their time for special events, programs of both educational and recreational orientation. These events and programs run throughout the year. For more information, call Linda at 1-815-234-8535 x200.

Organized Groups

The Byron Forest Preserve has service and volunteer opportunities. We can arrange times and specific service areas for you and your group. These areas can be related to awards, badges, or just for the benefit of learning to serve your community and others. For information, call Linda at 1-815-234-8535 x200.

Trophy Fish Exhibit

Show your fish mount for a chance to win a prize for best of show. All fish must be turned in to the Jarrett Prairie Center by January 29, 2009. There will be a reception held **February 27** at 6 pm for the anglers.

Where: Jarrett Prairie Center
When: **February 2-27**
Time: Normal business hours of JPC.
Cost: Free

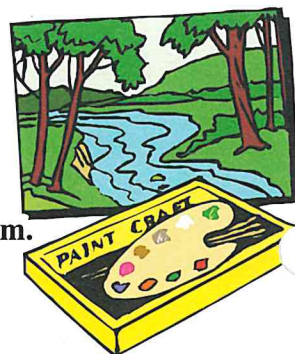
Artist Trading Card Swap

Artist Trading Cards (ATCs) are a relatively new phenomenon in the collector's world. These cards are the same size as any other collector's card, but you make them yourself and trade with others. Each card is a miniature, original work of art, ranging from actual painting on canvas to scrapbook-like collages. The first hour of each session will be spent creating ATCs to trade, and then from 8-8:30, we'll have our actual swap! If you create ATCs at home and would like to swap, you may also join us just for this part of the program. Come to one or more of the programs. Supplies provided for each session; create 2-5 cards depending on your speed and creativity.

Where: Jarrett Prairie Center
When: Fridays
January 16 & 30
February 13 & 27
March 13 & 27

Time: 6-8:30 pm
Cost: \$2 / person
Ages: 10 and up
Min/Max: 5 / no maximum

Register by noon on the Wednesday before the program.



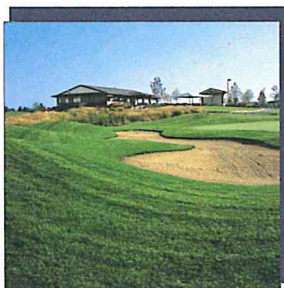
Facilities

PrairieView Golf Club

PrairieView Golf Club is a public, 18-hole bent grass championship golf course. Rated 4 stars by Golf Digest. This challenging course features bent grass tees, greens, and fairways. PrairieView also offers a full service practice



facility, equipment rental, fully stocked pro shop, lessons, and handicap services. The newly remodeled clubhouse features *The Prairie Grass Pub* for relaxing with your friends after a round of golf. The Prairie Grass Pub offers an extensive menu of delicious entrees and beverages. For more information and tee times, call 1-815-234-GOLF(4653).



Jarrett Prairie Center

Habitat exhibits, dioramas, audio interpretation, and view of the prairie. Wetland, woodlands, and prairie environments are displayed pre-European settlement. You may also get a souvenir in our gift shop.

Where: 7993 N. River Rd., Byron

When: Open Every Day

Cost: Free

Time: Mon, Wed, Fri - 8am-4:30pm
Tues & Thurs - 8am-8pm
Sat-9am-4pm & Sun-1-4pm



Weiskopf Observatory

View the stars and planets through our 11" Celestron telescope. Experienced staff will guide you through the skies. Call for viewing conditions at 1-815-234-8535, ext. 216. Closed if cloudy.

Where: 7993 N. River Rd., Byron

Time: Dark until 3 hours after dark

When: Saturdays (and Tuesdays in June, July, & August)

Cost: Free



Heritage Farm Museum

Enjoy a guided tour of this 1800s farm and museum with audio interpretation. Includes a grout house, corn crib, wind mill, and more. Come check out the new "residents!"

Open Hours: April 1 - October 31

Mon-Fri-8am-4:30pm, Sat-10am-6pm, Sun-2-6pm

Self-guided tours are free. A small fee may be charged for guided tours. Closed on holidays. Call 1-815-234-8535 ext. 217 for more information.



Stone Quarry Recreation Park

Stone Quarry Recreation Park has something for everyone! Many programs and activities are offered at Stone Quarry Recreation Park all year round. Located at 6845 German Church Road, Byron. Call 1-815-234-8900 for more information.



Stone Quarry Park Amenities:

Indoor

Party Room - capacity 300

Arcade Room

Food Factory

61" & 55" Big Screen T.V.s

Billiards Table

Juke Box

Air Hockey

Outdoor

Miniature Golf Course - \$4

Batting Cages - \$1 or \$3

Indoor/Outdoor Skate Park - \$3

Water Splash Area - FREE

Sand Volleyball Pit - FREE

Picnic Shelters - \$25

Basketball Courts - FREE

Playgrounds - FREE

Horseshoe Pits - FREE

Group Outings

Birthday Parties

Company Picnics

Family Reunions

Graduation Parties

Day Camp Trips

Happy Holidays!



Byron Bank is very blessed to have an extremely great group of employees who have been with Byron Bank for many years. This creates an atmosphere of knowledgeable professionals who go the extra mile to help our customers!

Celebrate...
the tradition of giving,
the beauty of the season
and a New Year of peace and happiness.



Byron Bank



Byron Forest Preserve
7993 North River Road
PO Box 1075
Byron, IL 61010

PRESORT STANDARD
US POSTAGE PAID
BYRON IL 61010
PERMIT NO 67

ECRWSS