

THE BLAZE

Byron Forest Preserve District

2008 Fall/Winter Issue

Something especially for you...

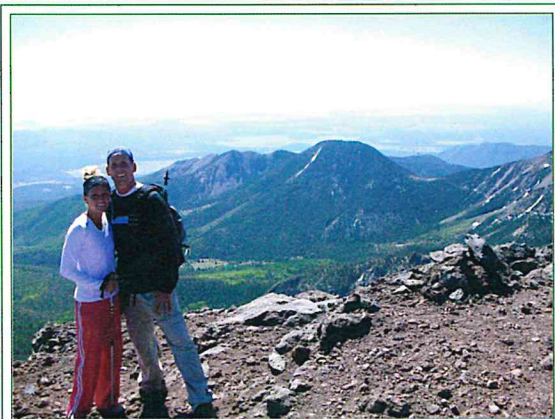


- *Annual Car Show*
- *Gold Medal Golf Tournament*
- *Paintball Playdays*
- *Halloween on the Prairie*
- *Annual Craft Show*

Director's Message

From Executive Director Todd Tucker...

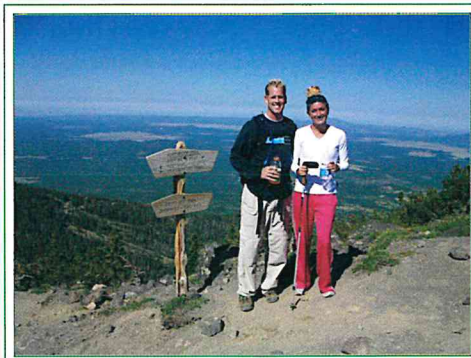
Recently, I had the pleasure of visiting the United States Southwest with my new wife; Brittany. We explored the vast area over a couple of weeks. We spent three days in Moab, Utah, hiking through Canyon Lands National Park and Arches National Park. We spent another four days in Flagstaff, Arizona, staying in a secluded cabin 8,500 feet on Mt. Humphrey's. We traveled to the Grand Canyon, hiked to the summit of Mt. Humphrey's at 12,600ft., and rafted down the Colorado River. These areas cannot be described with words or even with a mere picture, it truly is a must-see in person.



I would encourage everyone to go at some point in their lifetime. But, as we traveled from one park to another, enjoying the beauty of the ever-changing rock formations and the breath-taking landscapes, I realized that when we landed back at the Greater Rockford Airport that our specific area of the Rock River here in Illinois has a great deal of beautiful scenery as well.

I'm not suggesting that the view from the Prairie View room at the Jarrett Prairie Center is in the same class as the Grand Canyon or that rafting or canoeing the Rock is as exciting as the Colorado. What I am suggesting is that our area does have a lot to offer. The Rock River corridor has many natural areas to visit and enjoy. A few of these areas are Nachusa Grassland, White Pines State Park, Lowden Miller State Park, Franklin Creek State Park, and of course, our own Byron Forest Preserve. And, these are all within 20 miles.

The river provides many recreational opportunities and glimpses of geological features unique to the area like the sandstone bluffs that can be seen from



Rockford to Dixon and the occasional Bald Eagle that can be spotted along the way.

I think more people should take the time to explore the natural areas that are located practically in our own back yards. With the price of gas, this should be a great way for more affordable get-a-ways.

All in all I do take pleasure in seeing the great vast landscapes that our nation offers us; but, I also feel fortunate to live in this beautiful area I call home, Byron.

Todd Tucker
Executive Director

Inside This Issue...

Meet Our Board	4
Halloween on the Prairie .	5
Annual Craft Show	6
Annual Car Show	7
Kids Concerts	7
Stone Quarry Park	8
Dance & Tumbling	9
Trips	10
Preschool	11
PrairieView Golf Club	11
Outdoor Adventures	12
Special Programs	13
Badge Workshops	14-15
Prairie Life	16
Potpourri	17
Volunteers, Etc.	18
Facilities	19

Thank You Sponsors...



**Byron
Bank**

Exelon SM

Nuclear

Byron Generating Station

**Dr. Bob & Holly Johnson
Matt Johnson Scholarship Fund**

General Information

Jarrett Prairie Center Hours:

Mon., Wed., Fri.	8am-4:30pm
Tues. & Thurs.	8am-8pm
Saturday	9am-4pm
Sunday	1-4pm

Jarrett Prairie Center is closed:

Labor Day, September 1
 Thanksgiving Day, November 27
 Thanksgiving Friday, November 28
 Christmas Day, December 25

Administrative Offices are closed:

Labor Day, September 1
 Columbus Day, October 13
 Veteran's Day, November 11
 Thanksgiving Day, November 27
 Thanksgiving Friday, November 28
 Christmas Day, December 25

Behavior Policy

To ensure safe and enjoyable programs and facilities for all residents, the Byron Forest Preserve District has developed the following Code of Conduct. Participants in programs and those using facilities shall: (1) Show respect to all participants, staff, equipment, supplies and facilities; (2) Refrain from using offensive or profane language; (3) Refrain from aggressive behavior that could cause bodily harm.

The Byron Forest Preserve District reserves the right to dismiss a participant from a program if their behavior or language is deemed inappropriate by staff.

The Byron Forest Preserve District applies a caring and positive approach to discipline. Our staff will work with parents when special accommodations are necessary due to a participant's disability.

The Byron Forest Preserve District reserves the right to dismiss a participant whose behavior endangers the safety of others or causes property damage.

Byron Forest Preserve District

7993 North River Road, P O Box 1075, Byron IL 61010
815-234-8535 • byronforestpreserve.com

Board Meetings

The Byron Forest Preserve District Board of Commissioners meetings are held on the third Monday of each month at 7 pm at the Jarrett Prairie Center, 7993 North River Road, Byron.

Board of Commissioners

Sandy Brooks	President
Dave Flowers	Vice President
Dave Breen	Secretary
Jeff Ludwig	Treasurer
Jeff Huber	Commissioner

Who To Contact

General inquiries

815-234-8535 ext. 200

linda@byronforestpreserve.com

Administrative Staff

Edward Clift, Executive Director
edclift@byronforestpreserve.com
 815-234-8535 ext. 201

Todd Tucker, Acting Exec. Director
todd@byronforestpreserve.com
 815-234-8535 ext. 222

Richie Wolf, Education Supt.
richie@byronforestpreserve.com
 815-234-8535 ext. 217

Dan Beranek, Manager
 Stone Quarry Recreation Park
daniel@stonequarrypark.com
 815-234-8900

Steve Murray, Manager
 PrairieView Golf Club
pvgolfpro@hotmail.com
 815-234-4653 ext. 12

Robin Davis, Finance & Human Resources Superintendent
robin@byronforestpreserve.com
 815-234-8535 ext. 204

Russell Brunner, Restoration and Maintenance Superintendent
russell@byronforestpreserve.com
 815-234-8535 ext. 219

Michelle Lipps
 Blaze Editor, Design, & Layout
michelle@byronforestpreserve.com
 815-234-8535 ext. 224

Photography Policy

Photographs and videos are periodically taken of participants during programs, special events, trips, or at the parks.

Please be aware that these photographs may be used for Forest Preserve District publications and/or other media.

Our Mission



**BYRON
FOREST
PRESERVE
DISTRICT**

Mission Statement

Preservation ~ Education ~ Recreation

The mission of the Byron Forest Preserve District is to provide for Preservation of Open Space/Natural Resources, provide Education concerning our Natural Environment/Heritage, provide Recreational Opportunities and Enterprise Operations that are consistent with our Agency goals.

A Bit of History

The following people served as board commissioners since the inception of the Forest Preserve 28 years ago.

**Margaret Adams - 1980-1992*

**Bill Brown - 1980-1985*

**Dr. R.M. Jarrett - 1980-1994*

**Barb Lukan - 1980-1983*

**Larry Wenthold - 1980-1982*

Gene Wilmarth - 1982-1993

Rich Henricks - 1984-1987

Margaret Fridley - 1985-1987

Grant Bullock - 1987-1990

Gene Paquet - 1987-1994

Mike Eytalis - 1990-1993

Jim Jennings - 1992-1995

Fred Brune - 1994-1995

Dr. Robert Johnson - 1993-1999

Gene Smith - 1993-2003

George Ashby - 1994-2001

Don McAgthon - 1995-1997

Bob Severson - 1995-1997

Sven Johnson - 1997-1999

Nancy McLaughlin - 1997-1999

Doug Knodle - 1999-2003

Kim Houser - 2001-2003

Ken Ledene - 2003-2004

Ed Stirling - 2005-2007

**Founding Board Members*

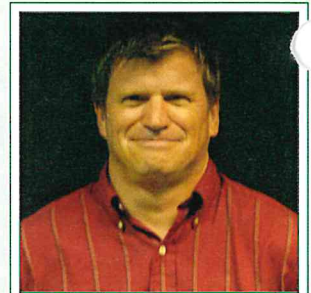
Meet Our Board of Commissioners



*President
Sandy Brooks
Since 1999*



*Secretary
Dave Breen
Since 2007*



*Vice President
Dave Flowers
Since 2003*



*Treasurer
Jeff Ludwig
Since 2003*



*Commissioner
Jeff Huber
Since 1999*

***Thank you for your
time and dedicated service!***

Special Event

Halloween on the Prairie Sunday, October 26 1 - 5 pm

Relax and enjoy this returning favorite. Special Egg Hunt at 3 pm. Affordable concession stand available. Co-sponsored by the Byron Park District.



- Haunted Hayrides
- Snake Wrangler
- Bouncing Fun
- Face Painting
- Spooky Games
- Straw Maze
- Free Stuff
- Crafts
- Egg Hunt



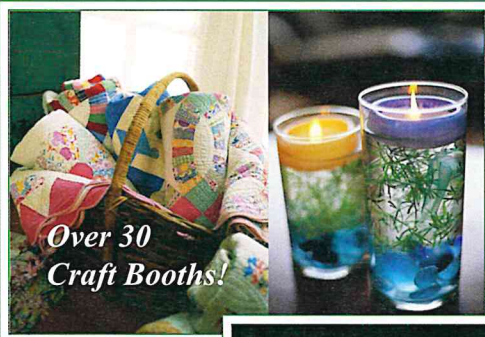
We Need Your Help!!

Local groups or just a few friends are needed to setup scary scenes along our haunted hayride route. This is great fun scaring all the riders but it's also a good fundraiser. Lots of prize money will be awarded and all groups get a participation bonus. Please call Richie at 1-815-234-8535 ext. 217 for more information and to choose your location along the hayride route.

17th Annual Holiday Craft Show

Saturday, **November 8** ~ 9am-4pm

Sunday, **November 9** ~ 11am-3pm



*Over 30
Craft Booths!*



Breakfast With Santa!



*World's Largest
Stocking Giveaway!*

Attention Crafters...

There are still booths available at the show. The booth fee is \$30-\$40 per booth. If you would like more information, please call Michelle at 1-815-234-8535 ext. 224.

You'll find that great, one-of-a-kind gift for that special someone at this year's craft show. With about 30 crafters exhibiting, there's a wide variety of crafts including quilts, clothing, jewelry, candles, flower arrangements, ceramics, decorations, baskets, bird-houses, furniture, and much more!

Bring your children to have breakfast with Santa Claus from 9-11 am on Saturday. All believers can visit with him and tell him everything they want for Christmas. We'll provide donuts, juice and milk. Bring your cameras to capture this awesome memory!

Be sure to register to win the World's Largest Stocking. This 8', toy-filled stocking will be given away on Sunday.

We'll also be giving away door prizes throughout this two-day event. The prizes will be items donated by the crafters.

Admission is free. The Jarrett Prairie Center is accessible to the physically challenged. An affordable concession stand and bake sale will be open on both days.

Parents can shop while the youngsters learn about their heritage at the hands-on, natural history museum in the Jarrett Prairie Center.

Don't forget about our Holiday Light Show. Take an evening drive through the Forest Preserve to see the festive light displays beginning in December. The park will be open every night until 10 pm for all to enjoy.



Bake Sale!

2nd Annual Matt Johnson Scholarship Fund Car Show

Street Rods, Muscle Cars, & Family Fun!!

The Byron Forest Preserve is hosting our 2nd Annual Matt Johnson Scholarship Fund Car Show. Cadwell Productions and the Forest Preserve are working together again to make this event fun and memorable for the whole family!

Along with street rods, muscle cars, and maybe a few motorcycles, there'll be a DJ, tractor show, concession stand, and the Byron Fire Department will demonstrate an extrication.

All profits from the car show registrations will be donated to the Matt Johnson Scholarship Fund. This Fund is available to area youth who need financial assistance to participate in Forest preserve programs.

Please call 1-815-234-8535 ext. 200 for more information. Be sure to mark your calendars and join us for some family fun!



Saturday, August 16
8 am - 4 pm

7993 North River Road ~ Byron

~~ Free Kids Concerts ~~

Sponsored by Exelon

Saturdays • 3 pm • Jarrett Prairie Center • 7993 North River Road • Byron



UB The Band • November 15

Come and play drums and guitar
in this interactive program.



Hoo Haven • December 13

You'll learn all about wildlife and
see several different live animals.



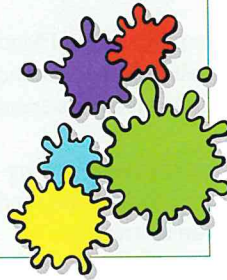
Stone Quarry Park

September
October
November
December

Paintball Play Days

Stone Quarry is sponsoring Winstead Outdoors in an effort to provide affordable paintball opportunities for individuals of the Ogle County area. We have three awesome fields to choose from and will supply all the gear needed to play! Our price includes admission for two games, 200 rounds of paint, helmets with eye protectors, neck protectors, chest protectors, one tank of CO2 and a paintball marker (gun). Extra paint and CO2 is available for more games at a minimal fee. We also offer group rates for private parties and corporate outings.

Where: Stone Quarry Recreation Park
When: Sept. 14 & 28, & Oct. 10 & 25
Time: Noon-5pm
Cost: \$20/person
Ages: 10 and up



Midnight Madness

Stone Quarry will be open until midnight, so come on out and partake in some late night skateboarding, mini-golf, and other games.

Where: Stone Quarry Park
When: 8 pm - Midnight
Dates: Saturdays
Sept. 13
Oct. 18
Nov. 22
Dec. 13
Cost: \$5 / person
Ages: 6th grade and up

Middle School Dances

Of course there are middle school dances this fall! Mark these dates on your calendar and join your friends, DJ Ryan from Sound Productions and the Stone Quarry Crew for some fun this fall! There will be a costume contest at the Halloween Dance!

Where: Stone Quarry Park
When: Fridays,
Sept. 5 & 19
Oct. 10 & 31
Nov. 14
Dec. 5 & 19
Time: 7 - 10 pm
Cost: \$5 / person
Ages: Middle School
*Chaperones needed,
please call 815-234-8900!*

Free Mini-Golf for Grandparents Day

Grandmothers and grandfathers get free mini-golf! Bring your grandchildren for a fun day at the park!

Where: Stone Quarry Park
When: Sunday, September 7
Time: 11am - 5pm
Cost: Free for grandparents
Ages: All

Kids Zone

This program is perfect for moms and dads who are looking for a little free time and kids who want to have fun! Featuring activities, games, prizes, and fun in the park. Pizza and pop provided. Extra money needed for games and other concession items. Registration required.

Where: Stone Quarry Park
When: Saturdays,
Sept. 27, Oct. 25
Nov. 15, Dec. 20
Time: 5:30-9:30pm
Cost: \$10 / person
Ages: First-Fifth Grade
Min/Max: 10/30
**Register by noon on the
Wednesday before the program.**

Stone Quarry Park Hours

September 1-May 1

Mon., Tues., Fri. ~ 4-7pm
Sat. ~ 11am-5pm
Sun. ~ 1-5pm

No School & Half Days

Fri., Aug. 29-2-7pm
Mon., Sept. 1-11am-7pm
Wed., Sept. 24-2-7pm
Fri., Oct. 10-11am-7pm
Tues., Nov. 11-11am-7pm

Christmas Break Hours

Dec. 20-23 ~ 11am-5pm
Jan. 2-4 ~ 11am-5pm

Park hours are subject to change due to weather related conditions or low attendance.

Attention Parents & Babysitters!

Stone Quarry has Wi-Fi!

Stone Quarry Park offers free wireless access. Bring your kids out to the park for some fun while you catch up on work projects or personal business. Laptops not provided.

Dance & Tumbling

Tumbling Class

Are you interested in learning the art of tumbling? Tumbling for beginners through advanced ages 6 and up! We will open a tot class for ages 3 to 5 year-olds with adequate interest. We offer small class sizes, generally four students per class to ensure quality mat time and instructions. We strive to build strength while instilling self confidence in our students. For more information, please call 1-815-316-0034.

Where:
Stone Quarry Park

When: Every Tuesday
(year round)

Time: 4 - 8 pm

Cost: \$12/hour
\$48/four classes
\$60/five classes
\$10/2nd class/wk
\$10/sibling

Ages: 6 and up
(will open for younger age groups with adequate interest)

Instructor:
Mary Wright Sheker

Dance Class

Do you love to dance or want to learn how? Have you ever dreamed of being in your favorite stage show? Then this dance program is just for you! Classes include tap, ballet, jazz, and musical theater dance. These classes are for all levels of dance, from beginners to experienced dancers.

Where: Stone Quarry Park
When: Mondays, September 8th - May
Time: 3 - 8 pm
Cost: \$30/child/month
Ages: 3-18
Instructor: Heather (Hartzell) Krick
(Stage Door Performing Arts Studio)
For more information, please call 1-815-234-8900.

Tap

Jazz



Ballet



Musical Theater



Join us as we head to Gurnee and Bolingbrook for some great shopping.

Where: Meet at the Jarrett Prairie Center
 When: Saturday, September 13 (Gurnee)
 Saturday, September 27 (Bolingbrook)
 Time: Noon - 6 pm
 Cost: \$10 / person & \$15 / couple
 Ages: All
 Min/Max: 5 / 14

Register by noon on September 12 and 26.



We're heading to this outfitter for some great shopping.

Where: Meet at the Jarrett Prairie Center
 When: Saturday, October 11
 Time: 10 am - 3 pm
 Cost: \$5 / person & \$8 / couple
 Ages: All
 Min/Max: 5 / 14

Register by noon on October 10.

Amish Country Trip

We are going to Indiana to visit Amish Country. Transportation and hotel included.

Where: Meet at the Jarrett Prairie Center
 When: Friday-Sunday, Nov. 7 - 9
 Time: Depart at 9 am.
 Cost: \$225 / person & \$300 / couple
 Ages: Adults
 Min/Max: 5 / 12

Register by noon on October 24.



Trip Ideas?

Do you have an idea for a trip that we should schedule? Please call Richie at 1-815-234-8535 ext. 217.

Starved Rock / Fall Colors

We'll check out the beauty of Fall on this trip.

Where: Meet at the Jarrett Prairie Center
 When: Saturday, October 25
 Time: 9 am - 4 pm
 Cost: \$10 / person & \$15 / couple
 Ages: All
 Min/Max: 5 / 14

Register by noon on October 24.



Perch / Walleye Fishing on Lake Erie

We're going to Marblehead, Ohio in search of these game fish. Transportation, charter, and hotel included.

Where: Meet at the Jarrett Prairie Center
 When: Friday-Sunday, September 19-21
 Time: Depart at 9 am.
 Cost: \$180 / person & \$250 / couple
 Ages: Adults
 Min/Max: 5 / 12

Register by noon on September 5.

Let's Go Frogging!



We'll take you to Pecatonica Wetlands to catch anything that hops! Nets will be provided.

Where: Meet at the Jarrett Prairie Center
 When: Saturday, August 30
 Friday, September 12
 Time: 6 - 8 pm
 Cost: \$4 / person & \$6 / couple
 Ages: All
 Min/Max: 5 / 14 in district van.
 Unlimited, if driving yourself.

Register by noon on August 29 & September 11.

Preschool & PrairieView GC

Register Now for Fall Preschool!

Get your kids ready for kindergarten by enrolling them in our structured preschool classes. The Tuesday/Thursday classes are geared towards 3-year-olds and younger 4-year-olds. The Monday/Wednesday/Friday classes are geared towards older 4-year-olds and younger 5-year-olds. Children must be at least 4 years old to attend the three-day class. They must be at least 3 years old to attend the two-day class. Children must be potty trained. Immunization records are required for students enrolling in the fall 2008 session.

You may register your child at anytime throughout the year if your child's birthday is later in the year. Please call 815-234-8535 ext. 200 for more information.

Where: Jarrett Prairie Center
Ages: 3 - 5 years
When: Mon/Wed/Fri or
Tues/Thurs
Time: 9-11:30am or 1-3:30 pm
Min./Max: 6 / 20 - M-W-F
6 / 14 - Tu-Th
Cost: \$85/month-M/W/F or
\$70/month-T/Th



Registration is ongoing throughout the year.

Meet the Teachers

Parents and students enrolled in our preschool program are encouraged to come and have treats and become familiar with the teachers and classroom.

Jarrett Prairie Center
Thursday, August 21 • 5:30 - 7 pm

The greatest natural resource that any country can have is its children.

--Danny Kaye

Gold Medal Golf Classic

The 17th Annual Gold Medal Golf Classic is scheduled for September 6th and 7th. Last year's tournament drew a record number of players and included a ladies division for the fifth straight year. The tournament is 36 holes played at scratch and is flighted after the first round. The cost of the tournament is \$95 (\$65 for season pass holders) and includes over \$4,000 in prizes. This year's event promises to be bigger and better than ever with another record of entries so register early! For more information or to sign up, please call the PrairieView Clubhouse at 1-815-234-GOLF (4653).

Season Golf Pass Reminder

Just a reminder that season golf passes will go on sale in November. By purchasing your season golf passes early, you'll save money! Golf passes are discounted until Christmas. After Christmas, passes will be sold at the full rate. A complete listing of pass fees, VIP fees, and green fees will be published in the next issue of *The Blaze*.

Prairie Grass Pub

If you are looking for a change in scenery, make sure you visit the Prairie Grass Pub at PrairieView Golf Club. The newest addition to PrairieView is a must visit attraction in Byron.

The Pub opens daily at 11 am and remains open seasonally with the golf course. Features include indoor and outdoor seating, a beautiful 1200 square foot deck overlooking the 18th green, three big screen, high definition televisions, and, of course, a mouth-watering menu.



You don't have to be a golfer to relax and enjoy the Prairie Grass Pub. Stop by for lunch or dinner and take a look!

Outdoor Adventures

September
October
November
December

Canoeing the Rock

Let's go canoeing down the Rock River. All equipment is provided for this fun program!

Where: Meet at River Park Parking Lot
across from Heritage Farm
When: Sunday, August 24
Time: 2 - 5 pm
Cost: \$20 / canoe
Ages: All - Minimum one adult per canoe.
Min/Max: 2 canoes / 12 canoes

Register by noon on August 22.



Canoeing the Kishwaukee River

We'll navigate the mighty Kishwaukee River. All equipment is provided for this fun program!

Where: Meet at River Park Parking Lot
across from Heritage Farm
When: Sunday, August 31
Time: 2-5 pm
Cost: \$20 / canoe
Ages: All - Minimum one adult per canoe.
Min/Max: 2 canoes / 12 canoes

Register by noon on August 29.

Goodness Snakes

Let's learn about these amazing reptiles and feel their smooth skin. We'll make a craft to take home, too!

Where: Jarrett Prairie Center
When: Thursday, October 16
Time: 6-8 pm
Cost: \$2 / person
Ages: All
Min/Max: 5 / none

Register by noon on October 15.



Owl Prowl

Learn about our stuffed native owls in the museum then take a hike to find the real ones!

Where: Jarrett Prairie Center
When: Friday, December 12
Time: 7-9 pm
Cost: \$2 / person
Ages: All
Min/Max: 5 / none

Register by noon on December 11.

Beekeeping Workshops

Learn techniques and tools of the trade. Ask about our mentoring program.

Where: Jarrett Prairie Center
When: Sundays, September 14*, October 12,
November 9, December 14
Time: 2 - 4 pm
Cost: \$2 / person
Ages: 3 and up
Min/Max: 5 / 25

*Denotes outdoor workshops, bring your bee suits!



Prairie Wildflower Walk

Where: Meet at Jarrett Prairie Center
When: Sunday, September 7
Time: 3 - 4 pm
Cost: \$2 / person
Ages: All
Min/Max: 5 / none

Register by noon on September 5.

Fossil Hunt

Learn about the fossils that can be found in this part of Illinois, then take a short walk to the quarry behind our recreation park to look for them. You may keep what you find. Please wear sturdy shoes and bring sunscreen and bug spray.

Where: Stone Quarry Recreation Park
When: Sunday, September 14
Time: 10 am - Noon
Cost: \$2 / person
Ages: All
Min/Max: 5 / 25

Register by noon on September 12.

Constellations and Meteor Shower

Relax under the night skies and watch the meteors fall. We'll also search for fall constellations.

Where: Weiskopf Observatory
When: Wednesday, November 5
Time: 7 - 9 pm
Cost: \$2 / person
Ages: All
Min/Max: 5 / 20

Register by noon on November 4.



Special Programs

Special Effects and Movie Make-Up

Not for the faint of heart! Learn movie secrets that you can apply to your Halloween costume, including face painting, mask-making, fake blood, and zombie skin. Includes all materials.

Where: Jarrett Prairie Center
When: Saturday, **October 25**
Time: 2 - 4 pm
Cost: \$4 / person
Ages: 10 and up
Min/Max: 5 / 20

Register by noon on October 23.



Game Night

Come out to Stone Quarry to meet new friends and play games! We'll provide and teach you how to play some of the best card and board games around, including Carcassonne, RoboRally, Settlers of Catan, The Great Dismal, Killer Bunnies, and Pirates of the Spanish Main. If you've seen these expensive games in stores and wanted to try them first, now's your chance! Snacks and fountain drinks included!

Where: Stone Quarry Recreation Park
When: Fridays, **November 7, 14, December 5, & 12**
Time: 6 - 10 pm
Cost: \$5 / person per night
Ages: 10 - 15
Min/Max: 5 / 25

Register by noon on the Wednesday before.

Hunter Education Class

This 10-hour class covers first aid, wildlife management, and more. You must pass a written test for certification.

Where: Jarrett Prairie Center
When: Mon., Wed., & Fri.
December 8, 10, & 12
Time: 6 - 9 pm (Mon. & Wed.) &
6 - 10 pm (Fri.)
Cost: Free
Ages: All - Must be able to pass written test.
Min/Max: 5 / 80

Register by noon on December 5.



America Recycles Day - Shirt Giveaway

Recycle some household waste at our bin and get a free 100% recycled shirt (while supplies last).

Where: Recycling bin located near maintenance.
When: Friday, **November 14**
Time: 3 - 4:30 pm
Cost: Free
Ages: All

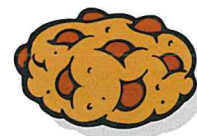


Christmas Cookie Baking

Learn some great tips and recipes for holiday cookies, and get some hands-on experience with those tricky techniques. Our "expert" baker will start a new batch of cookies every hour. You may come for one or more of the hour-long sessions; there will be a different recipe started every hour; and of course, you get to take home part of each batch! Break away from peanut butter kisses and sugar cookie cutouts--these recipes are spectacular!

Where: Jarrett Prairie Center
When: Saturday, **December 6**
Time: Noon - 5 pm
Cost: \$2 / person per hour
Ages: 14 and up
Min/Max: 5 / 20

Register by noon on December 3.



If you have an idea for a program, please call Dan at 1-815-234-8900 or Richie at 1-815-234-8535 ext. 217.

Visiting Art Displays

Artist Reception and Show - Holly Funke

Come and view her paintings and photographs.

Where: Jarrett Prairie Center
When: Throughout September and **October**
Time: Normal business hours of JPC.
Cost: Free
Other: Reception to be held
October 23, at 6 pm.

Artist Reception and Show - Sharon Wallace

View Sharon's hand made paper and experimental artwork.



Where: Jarrett Prairie Center
When: Throughout **November** and **December**
Time: Normal business hours.
Cost: Free
Other: Reception to be held
November 13, at 6 pm.

Badge Workshops

Webelos & Boy Scouts

Boy Scout Badge - Forestry

Where: Jarrett Prairie Center
 When: Thursday, **December 11**
 Time: 6 - 9 pm
 Cost: \$5 / scout
 Ages: 10 and up
 Min/Max: 5 / 30

Register by noon on December 10.



Boy Scout Badge - Astronomy

Where: Weiskopf Observatory
 When: Thursday, **November 20**
 Time: 6 - 9 pm
 Cost: \$5 / scout
 Min/Max: 5 / 30

Register by noon on November 19.

Webelo Badge - Naturalist

Where: Jarrett Prairie Center
 When: Thursday, **November 6**
 Time: 6 - 8 pm
 Cost: \$5 / webelo
 Min/Max: 5 / 30

Register by noon on November 5.

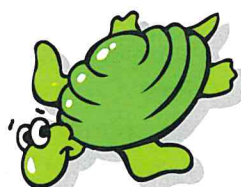
Brownies

Brownie Try-It - Animals

We will learn about the different kinds of animals displayed in the museum, pet our two reptiles, and play a game of animal moves relay to earn this badge.

Where: Jarrett Prairie Center
 When: Monday, **September 29**
 Time: 6 - 8 pm
 Cost: \$5 / brownie
 Ages: Brownies
 Min/Max: 5 / 25

Register by noon on September 26.



Brownies

Brownie Try-It - Listening to the Past

We'll explore the Heritage Farm Museum, learn about the area's history, play pioneer games, and make an old-fashioned dip candle.

Where: Heritage Farm Museum
 When: Saturday, **October 18**
 Time: Noon - 3 pm
 Cost: \$5 / brownie
 Ages: Brownies
 Min/Max: 5 / 25

Register by noon on October 15.



Brownie Try-It - Senses

Map your taste buds, learn some sign language, and play some sensory games to earn this badge.

Where: Jarrett Prairie Center
 When: Monday, **November 10**
 Time: 6:30 - 8:30 pm
 Cost: \$5 / brownie
 Min/Max: 5 / 25

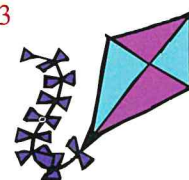
Register by noon on November 7.

Brownie Try-It - Movers

We'll make kites, wind socks, and other moving things, and we'll go outside to fly them. Join us for two badges - "Numbers and Shapes" is offered after this one. You may sign up for one or both.

Where: Jarrett Prairie Center
 When: Saturday, **December 13**
 Time: Noon - 2 pm
 Cost: \$5 / brownie
 Min/Max: 5 / 25

Register by noon on December 10.



Brownie Try-It - Numbers and Shapes

Tangrams, origami, and Mobius strips are just a few of the things we'll learn about and make for this badge. "Movers" is also being offered on this day; you can get two badges at once! You may sign up for one or both.

Where: Jarrett Prairie Center
 When: Saturday, **December 13**
 Time: 2 - 4 pm
 Cost: \$5 / brownie
 Min/Max: 5 / 25

Register by noon on December 10.

Badge Workshops

Junior Girl Scouts

Junior Girl Scout Badge - Visual Arts

We'll explore many kinds of artistic styles and mediums to earn this badge. We'll also learn about design, color, value, and perspective.

Where: Jarrett Prairie Center
When: Thursday, September 25
Time: 5:30 - 8:30 pm
Cost: \$5 / scout
Min/Max: 5 / 20



Register by noon on September 23.

Junior Girl Scout Badge - Jeweler

We'll make several pieces of jewelry while learning about different styles and techniques. We'll also make our own beads from clay, wood, and paper.

Where: Jarrett Prairie Center
When: Friday, October 17
Time: 6 - 9 pm
Cost: \$8 / scout
Min/Max: 5 / 20

Register by noon on October 15.

Junior Girl Scout Badge - Earth Connections

Head outdoors to earn this badge. We'll learn about native plants and trees, ecosystems, and preservation of our natural areas.



Where: Jarrett Prairie Center
When: Saturday, October 18
Time: 3 - 5:30 pm
Cost: \$5 / scout
Min/Max: 5 / 20

Register by noon on October 15.

Junior Girl Scout Badge - Drawing and Painting

Spend an afternoon exploring many different artistic styles and mediums to create fantastic art! We'll also put some pieces on display in the museum for our visitors to enjoy.

Where: Jarrett Prairie Center
When: Saturday, November 15
Time: Noon - 4 pm
Cost: \$5 / scout
Min/Max: 5 / 20

Register by noon on November 12.



Junior Girl Scouts

Junior Girl Scout Badge - Outdoor Cook

We'll learn all about what it takes to prepare a meal for a campout, and we'll do some cooking over a fire. Sign up for the scouting campout to follow and stay overnight!

Where: Jarrett Prairie Center
When: Saturday, September 20
Time: 4 - 7 pm
Cost: \$5 / scout
Min/Max: 5 / 20

Register by noon on September 17.



Girl Scout Overnight Campout

We'll provide tents and food, as well as activities such as campfire stories and songs, a night hike, and a visit to the observatory. The campout and activities can be used to earn part of another badge. Junior badges include overnights for Camp Together, Outdoor Creativity ("starry, starry night"), Outdoor Fun ("sing around the campfire"), and Sky Search. Brownies can complete the "sleep out!" activity for the Outdoor Adventurer badge, and "the night sky" activity for the Space Explorer badge. Even if you aren't trying to finish those badges, we'll have a great time camping out! Parents are welcome to attend. Please bring sleeping bags and personal items; you may also bring your own tent if you wish.

Where: Jarrett Prairie Center
When: Saturday-Sunday, September 20-21
Time: 6 pm - 10 am

Cost: \$15 / scout
Ages: All Junior and Brownie Girl Scouts
Min/Max: 5 / 25

Register by noon on September 17.



Scout Groups: Do you need a different date or badge?

If your scout group needs a different badge or workshop date, please call us to schedule another workshop. A minimum number is required. Please call Richie Wolf at 1-815-234-8535 ext. 217.

Invasive Shrubs: Autumn Olive

(*Elaeagnus umbellata*)

By Katie Schoenfeldt

Assistant Superintendent of Restoration



During the fall and winter months at the Byron Forest preserve, we spend a good chunk of time trying to remove unwanted trees and shrubs. Unwanted trees and shrubs shade out our native plants; which

in turn decreases our biodiversity. One of the shrubs that we are trying to eradicate from our preserve is called: Autumn Olive (*Elaeagnus umbellata*). This shrub grows in height anywhere from 6-20 ft. tall. It loves to inhabit areas that have been disturbed. The leaves of this shrub are simple, alternate and oval (pictured below). The underside of this leaf displays a silvery color. This shrub's population spreads by producing small round pink to red fruits. Each one of these plants can produce up to eight pounds of fruit each year. Birds, skunks, raccoons, and opossums eat these fruits and in the process help to spread this unwanted shrub species around.

To control this species, we primarily use a cut stump method. What this means is that we use either a chainsaw or a brush cutter to cut the shrub down at the base of its trunk and then we apply an herbicide treatment to the exposed trunk. If we do not apply the herbicide treatment, the cut stump will vigorously resprout and then the process must start over again.

It takes a lot of work to remove invasive shrubs and trees. So if you are out walking around the preserve this fall or winter and hear chainsaws in the background, you will know that we are out hunting down and killing unwanted invasive shrubs and trees.



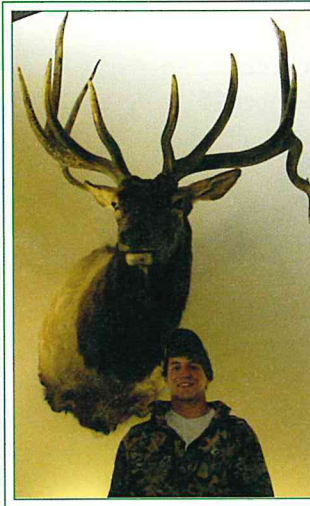
If you would like to volunteer to help out on the prairie, please call Russell at 1-815-234-8535 ext. 219.

Everybody needs beauty as well as bread, places to play in and pray in, where nature may heal and cheer and give strength to body and soul alike.

--John Muir, US Naturalist, Writer

"The Bull of a Lifetime..."

By Gabe Eiten



My name is Gabe Eiten and I am a seasonal worker at the Byron Forest Preserve. Around mid-December 2006, I was fortunate enough to have shot a trophy bull elk in the state of Pennsylvania. The experience will last me a lifetime as I remember all the excitement and intense adrenaline I experienced at the moment at which I harvested the bull of a lifetime.

The original hunting plan for that day was to go out and sit in a blind and wait for a trophy whitetail. As we waited count-

less hours, we could hear the sound of large twigs crashing and crunching in the distance. Soon I began to realize that the sounds were actually becoming louder and more clear; meaning only one thing that whatever it was, was headed our way! Then in the distance there was a broad tan and dark brown figure with its head down to the ground grazing on some of the foliage. I was told that it was the elk of a lifetime and that I could take the shot. After setting my sights on the bull, I fired four .270 deer rounds into this 1,300-pound animal and watched him disappear over the steep embankment. Finally, after a long wait, we decided it was time to go take a look at my bull. The hike over to the location at which we believed he would be, was filled with anticipation of how large this animal really could be. Upon our arrival, I knew that the bull I had set my sights on was no typical bull elk. He had an unusual curvature at the end of both of his main beams along with chocolate dark antlers. He was a seven by seven scoring in at 367 inches.

The elk is a large herbivore that averages between 400 lbs. to 1,100 lbs. The scientific name for this animal is *Cervus elaphus*. This creature is native to several areas in North America. The elk can tolerate several different types of climates in the U.S. and Canada. This ability to adapt is becoming more and more important as the elk have actually began to make its expansion throughout the United States and even into Mexico. Elk actually used to inhabit the local prairies that can be viewed at the Jarrett Prairie Center. This expansion of the elk population has been made possible due to proper wildlife and land management practices. I am planning on becoming a part of this effort as I am going to University of Wisconsin at Stevens Point to get a degree in fisheries and wildlife management.

Potpourri

Birthday Parties

Jarrett Prairie Center

Themes: Tea Party, Native Americans, Sky's the Limit, Goodness Snakes, Creepy Crawlies, and Where Do Butterflies Go When It Rains? Call 815-234-8535 x217 to schedule your party.



Deluxe Party - \$75 (add'l child-\$5 each)
(program, cake, ice cream, tableware for 12, & banner)
Standard Party - \$45 (add'l child-\$5 each)
(program only for 12)

Stone Quarry Recreation Park
also offers birthday parties.

For details and costs, please call 815-234-8900.

Field Trips

to the Natural History Museum,
Weiskopf Observatory, & Heritage Farm Museum

Scouts, schools, and senior groups are welcome to the Forest Preserve for an educational and fun guided tour of our great museums. Staff welcome and give tours for the low cost of \$1.50 per person with a minimum of \$30 per group. We offer many sessions to choose from including prairie ecology, astronomy, and museum tour. Call 815-234-8535 x217 to schedule your next outing with us.



Recycling Station

The Byron Forest Preserve District has a mission to provide for preservation of natural resources, to provide education about natural and cultural heritage, and to provide recreation. The District developed a recycling station and is educating hundreds of students on recycling through the International Earthkeepers program. Materials from the recycling station are collected and sorted twice per month, producing up to three tons of recyclable material like cardboard, glass, newspaper, plastic, and metals. The cost of hauling is covered through a cooperative agreement with the Ogle County Solid Waste Management Department.

The station accepts glass, aluminum, plastic #1-5 & #7, tin, steel, mixed paper, cardboard, and newspaper. The bin is located in the maintenance parking lot at 7993 N. River Rd. in Byron. The station is open during daylight hours seven days per week. Please recycle responsibly by leaving the area cleaner than when you arrived. **You no longer need to separate the items in each bin.**

Outreach

We offer educational programs to any group including retirement homes and nursing facilities for a small fee. Using our nature staff and nature stuff, we come to you and deliver exciting and educational programs including Birds of a Feather, Indian Life (with traditional dress), and Animal Encounter (with live animals). Call today to book your next on-site program.

Rare Bird Alert Hotline

The Byron Forest Preserve is hosting a "Rare Bird Alert" hotline. Call 1-815-234-8535 ext. 203 to hear updated reports or to leave a message about where, when, what, and how to spot a rarity that you've found.

Canoe Rentals

We rent canoes. Just call us with your date and number of canoes needed. We'll haul you upstream on the Rock River and accompany you back to your vehicles at the River Park parking lot on River Road across from Heritage Farm.

Canoes are \$25 each and include paddles and life jackets. Call Richie at 815-234-8535 ext. 217 for this unique and fun outing!

Volunteers, Etc.

Join Our Community of Volunteers

*Each person who gives of themselves,
gives to themselves.*

Tuesday Morning Volunteer Group

Come join us for a time of visiting, refreshments, and fun indoor projects.

Where: Jarrett Prairie Center
7993 N. River Rd., Byron
When: First Tuesdays
September-April
Time: 8:30-11 am
Cost: Free
Ages: All



Wednesday Woodshop Group

Come join the area men for coffee, and the opportunity to use your skills in carpentry and woodworking. New woodshop volunteers check in at the Jarrett Prairie Center before going to the Woodshop.

Where: Maintenance Woodshop
7993 N. River Rd., Byron
When: Wednesdays, Year Round
Time: 9-11 am
Cost: Free



Individual and Family

The Byron Forest Preserve has several volunteer opportunities for individuals and families interested in sharing their time for special events, programs of both educational and recreational orientation. These events and programs run throughout the year. For more information, call Linda at 1-815-234-8535 x200.

Organized Groups

The Byron Forest Preserve has service and volunteer opportunities. We can arrange times and specific service areas for you and your group. These areas can be related to awards, badges, or just for the benefit of learning to serve your community and others. For information, call Linda at 1-815-234-8535 x200.

"Going Green at Rochelle Printing"

Rochelle Printing Company printed this issue of *The Blaze* using recycled paper and environmentally friendly inks. The Byron Forest Preserve selected Rochelle Printing Company partially based on these factors. Rochelle Printing reclaims all of its blanket wash which is a solvent and chemical combination used to keep the printing blanket clean. In the past they would purchase four 55 gallon drums of this solution per month and in turn send out four drums per month for disposal. Now, with their Prisco solvent recovery system, they reclaim and reuse this solvent. This has reduced purchasing of new blanket wash to about one drum every six weeks. In addition, the by-product that is left over after they reclaim the solvent is mostly ink and spray powder and is recycled by Safety Clean.

Rochelle Printing also recycles all of their scrap paper and used printing plates. In addition to this they have started using a non VOC (Volatile Organic Compounds) ink which simply means that there are no mineral oils in this ink. Soy ink has long been recognized as an environmentally friendly ink yet it only replaced a portion of the mineral oil leaving 15-25% of the total make up using mineral oil. Their new non VOC ink replaces all the mineral oil with vegetable oils. This will help to reduce pollution and save petroleum resources.

If you would be interested in learning more about how Rochelle Printing can help your organization produce high quality print materials on time and on budget, please call 1-815-562-2128 or visit their website at www.rochelleprinting.com.

Rochelle

2007 Benny Award Winner

The Benny is the highest honor bestowed to Printers.....

In 2007 there were 5,100 entries in this prestigious judging. Of the 5,100 entries there were only 90 Benny's awarded. Rochelle Printing submitted one entry and was awarded a Benny.

To date we have a 100% success rate with 9 projects entered for judging and 9 awards received.



Facilities

PrairieView Golf Club

PrairieView Golf Club is a public, 18-hole bent grass championship golf course. Rated 4 stars by Golf Digest. This challenging course features bent grass tees, greens, and fairways. PrairieView also offers a full service practice facility, equipment rental, fully stocked pro shop, lessons, and handicap services. The newly remodeled clubhouse features *The Prairie Grass Pub* for relaxing with your friends after a round of golf. The Prairie Grass Pub offers an extensive menu of delicious entrees and beverages. For more information and tee times, call 1-815-234-GOLF (4653).



Jarrett Prairie Center

Habitat exhibits, dioramas, audio interpretation, and view of the prairie. Wetland, woodlands, and prairie environments are displayed pre-European settlement. You may also get a souvenir in our gift shop.

Where: 7993 N. River Rd., Byron

When: Open Every Day

Cost: Free

Time: Mon, Wed, Fri - 8am-4:30pm

Tues & Thurs - 8am-8pm

Sat-9am-4pm & Sun-1-4pm



Weiskopf Observatory

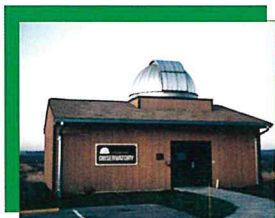
View the stars and planets through our 11" Celestron telescope. Experienced staff will guide you through the skies. Call for viewing conditions at 1-815-234-8535, ext. 216. Closed if cloudy.

Where: 7993 N. River Rd., Byron

Time: Dark until 3 hours after dark

When: Saturdays (and Tuesdays in June, July, & August)

Cost: Free



Heritage Farm Museum

Enjoy a guided tour of this 1800s farm and museum with audio interpretation. Includes a grout house, corn crib, wind mill, and more. Come check out the new "residents!"

Open Hours: April 1 - October 31

Mon-Fri-8am-4:30pm, Sat-10am-6pm, Sun-2-6pm

Self-guided tours are free. A small fee may be charged for guided tours. Closed on holidays. Call 1-815-234-8535 ext. 217 for more information.



Stone Quarry Recreation Park

Stone Quarry Recreation Park has something for everyone! Many programs and activities are offered at Stone Quarry Recreation Park all year round. Located at 6845 German Church Road, Byron. Call 1-815-234-8900 for more information.



Stone Quarry Park Amenities:

Indoor

Party Room - capacity 300

Arcade Room

Food Factory

61" & 55" Big Screen T.V.s

Billiards Table

Juke Box

Air Hockey

Outdoor

Miniature Golf Course - \$4

Batting Cages - \$1 or \$3

Indoor/Outdoor Skate Park - \$3

Water Splash Area - FREE

Sand Volleyball Pit - FREE

Picnic Shelters - \$25

Basketball Courts - FREE

Playgrounds - FREE

Horseshoe Pits - FREE

Group Outings

Birthday Parties

Company Picnics

Family Reunions

Graduation Parties

Day Camp Trips

BYRON BANK

IS YOUR MONEY SAFE?

Come in and receive your **FREE** FDIC insurance customized analysis showing the coverage of your deposits at Byron Bank or other banks.

Due to recent financial problems with a few large banks we want to assure you that Byron Bank is a safe place for your money. As an independent bank with high capital and excellent ratings for safety we will protect your assets.

FDIC Insurance

In addition, the FDIC protects your money with insurance up to \$100,000 for each depositor. Retirement accounts are covered up to \$250,000. By titling accounts properly your money can be insured to much larger amounts.

What Is Important In Choosing A Bank

- Your Money Is Safe and Secure
- Convenient Locations and Hours
- Competitive Interest Rates
- Knowledgeable Assistance With My Investing
- Community Support

200 N Walnut
Byron IL 61010
Phone: 815-234-2561

11159 Hwy 76
Poplar Grove IL 61065
Phone: 815-323-1452

5653 N Junction Way
Davis Junction 61020
Phone: 815-645-2610



www.byronbank.com



Byron Forest Preserve
7993 North River Road
PO Box 1075
Byron, IL 61010

PRESORT STANDARD
US POSTAGE PAID
BYRON IL 61010
PERMIT NO 67

ECRWSS