

# The Blaze

*Byron Forest Preserve District*

*2010-2011 Winter/Spring Issue*



Byron  
Forest Preserve  
District

## *Inside this issue...*

*~ Trips ~ Preschool ~ Scout Badge Workshops ~ Middle School Dances ~  
~ Cross-Country Skiing ~ Maple Syrup Festival ~ Easter Egg Hunt ~*



***Forest Preserve Seals the Deal...***

The District is very proud to announce the purchase of 228 acres of land. The land is the historic Barrick Farm land, located on the northeast corner of Tower Road and Oak Grove Road. We purchased the property from the Smeja Family on November 1, 2010.

Currently, the 228 acres are in cropland, pastureland, oak savanna, and creek bottom. The District will slowly restore the land to its natural state of prairie, wetland, and oak savanna. We will eventually put in a small parking lot and trails for visitors to enjoy nature walks, bird watching, hiking, and many other outdoor uses.

As Byron grows and this area continues to develop, this property's significance will be appreciated by residents who will have a beautiful forest preserve to enjoy that is located nearby for them and their children to use.

The Barrick family lived in Byron before the turn of the century and owned a pharmacy/drugstore on Second Street downtown Byron. If anyone has information on the Barrick Family or the farm, the District would be interested to learn more about the history of the property. Please feel free to contact me at 815-234-8535 ext. 222.



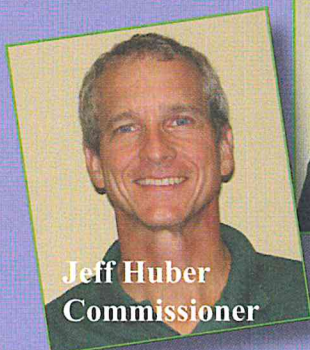
*Left to Right: Jerry Paulson, Executive Director Todd Tucker, Kim Smeja, Jill Smeja Gnesda, Phil Zaffer.*

## Our Mission & Board

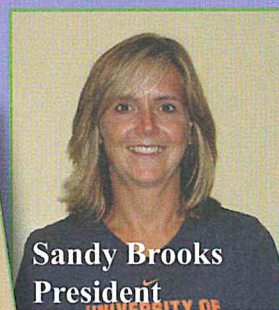
### Mission Statement

#### *Preservation ~ Education ~ Recreation*

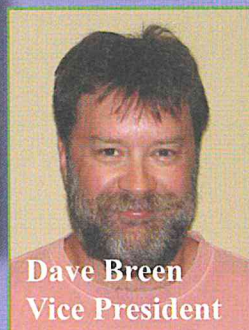
The mission of the Byron Forest Preserve District is to provide for Preservation of Open Space/Natural Resources, provide Education concerning our Natural Environment/Heritage, provide Recreational Opportunities and Enterprise Operations that are consistent with our Agency goals.



**Jeff Huber**  
Commissioner



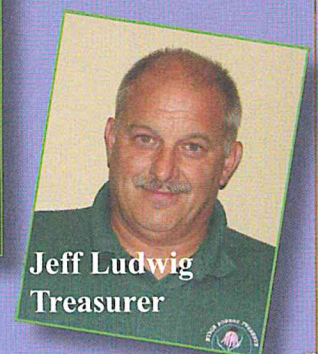
**Sandy Brooks**  
President



**Dave Breen**  
Vice President



**Dennis Cravatta**  
Secretary



**Jeff Ludwig**  
Treasurer

Byron Forest Preserve District Board of Commissioners



Se habla español  
815-234-8535 x200

# General Info

3

## Jarrett Prairie Center Hours

Mon., Wed., Fri. 8am-4:30pm  
Tues. & Thurs. 8am-8pm  
Saturday 9am-4pm  
Sunday 1-4pm

## Jarrett Prairie Center Closed:

Christmas Eve, December 24  
Christmas Day, December 25  
New Year's Day, January 1  
President's Day, February 21  
Good Friday, April 22  
Easter Sunday, April 24

## Administrative Offices Closed:

Christmas Eve, December 24  
New Year's Eve, December 31  
President's Day, February 21  
Good Friday, April 22

## Behavior Policy

To ensure safe and enjoyable programs and facilities for all residents, the Byron Forest Preserve District has developed the following Code of Conduct.

Participants in programs and those using facilities shall: (1) Show respect to all participants, staff, equipment, supplies, and facilities; (2) Refrain from using offensive or profane language; (3) Refrain from aggressive behavior that could cause bodily harm.

The Byron Forest Preserve District reserves the right to dismiss a participant from a program if his/her behavior or language is deemed inappropriate by staff or endangers the safety of others or causes property damage.

The Byron Forest Preserve District applies a caring and positive approach to discipline. Our staff will work with participants if special accommodations are necessary due to a participant's disability.

**Byron Forest Preserve District**  
**7993 North River Road, P O Box 1075, Byron IL 61010**  
**815-234-8535 ~ [www.byronforestpreserve.com](http://www.byronforestpreserve.com)**

## Board Meetings

The Byron Forest Preserve District Board of Commissioners meetings are held on the third Monday of each month at 7 pm at the Jarrett Prairie Center located at 7993 North River Road, Byron, Illinois.

## Board of Commissioners

Sandy Brooks, President  
Dave Breen, Vice President  
Jeff Ludwig, Treasurer  
Denny Cravatta, Secretary  
Jeff Huber, Commissioner

Who to Contact: *General inquiries*

1-815-234-8535 ext. 200 or [raul@byronforestpreserve.com](mailto:raul@byronforestpreserve.com)

## Administrative Staff

Todd Tucker, Executive Director  
[todd@byronforestpreserve.com](mailto:todd@byronforestpreserve.com)  
815-234-8535 ext. 222

Michelle Gerke  
Administrative Services Coord.  
Blaze Editor, Design & Layout  
[michelle@byronforestpreserve.com](mailto:michelle@byronforestpreserve.com)  
815-234-8535 ext. 224

Shawn McCammond, Finance and  
Human Resources Superintendent  
[shawn@byronforestpreserve.com](mailto:shawn@byronforestpreserve.com)  
815-234-8535 ext. 204

Russell Brunner, Restoration and  
Maintenance Superintendent  
[russell@byronforestpreserve.com](mailto:russell@byronforestpreserve.com)  
815-234-8535 ext. 219

Richie Wolf, Education Supt.  
[richie@byronforestpreserve.com](mailto:richie@byronforestpreserve.com)  
815-234-8535 ext. 217

Cheryl Heesaker, Manager  
Stone Quarry Recreation Park  
[cheryl@stonequarrypark.com](mailto:cheryl@stonequarrypark.com)  
815-234-8900

Steve Murray, Manager  
PrairieView Golf Club  
[pvgolfpro@hotmail.com](mailto:pvgolfpro@hotmail.com)  
815-234-4653

Janet Dahlberg, Artist  
[janet@byronforestpreserve.com](mailto:janet@byronforestpreserve.com)  
815-234-8535 ext. 232

## Photography Policy

Photographs and videos are periodically taken of participants during programs, special events, trips, or at the parks. Please be aware that these photographs may be used for Forest Preserve District publications and/or other media.

*Printed on 100% recycled paper.*



# Maple Syrup Festival

**Saturday, March 19, 2011  
7 - 11 am**

**Jarrett Prairie Center, 7993 North River Road, Byron**



*Relax and enjoy this returning favorite! We'll have a pancake breakfast, maple tree tapping, hay rides, kid's crafts, and more!*

*Co-sponsored by the Byron Kiwani's Club. Free admission. Small fee for breakfast. Get advance sale tickets at the Jarrett Prairie Center.*

*For more information, call 815-234-8535 ext. 200.*



## Annual Easter Egg Hunt

**Saturday, April 23, 2011**  
**11 am SHARP!**

*Hop on over to Stone Quarry Recreation Park for  
our Annual Easter Egg Hunt!*

There will be lots of prizes and candy for kids in preschool through fourth grade. This event is co-sponsored by the Byron Lions Club. After the hunt, we'll be cooking hot dogs on the grill for those hungry bellies so stick around for a great lunch special!

Stone Quarry Recreation Park  
6845 German Church Road, Byron  
815-234-8900





## FREE Kids Concerts

*Sponsored by Exelon ~ Jarrett Prairie Center ~ 3 pm*

### Willow Bend Alpaca Farm

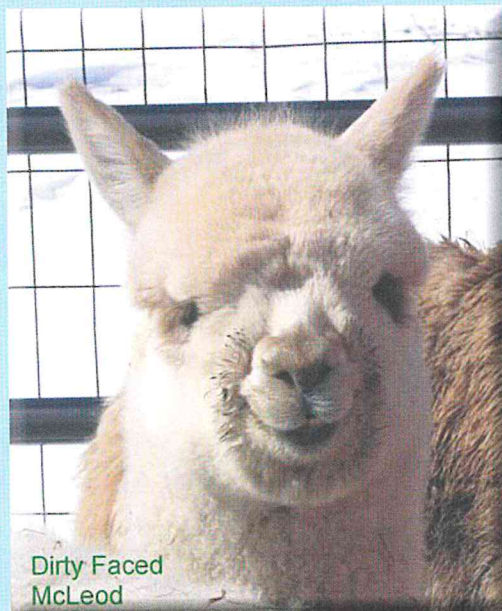
January 8

Meet these exotic animals and learn what makes them special.

Parrot Trivia

February 12

Come learn all about these amazing performers and watch their awesome tricks.



Dirty Faced  
McLeod

## Fall Preschool



Get your kids ready for kindergarten by enrolling them in our structured preschool classes. The Tuesday/Thursday classes are geared toward 3-year-olds and younger 4-year-olds. The Monday/Wednesday/Friday classes are geared toward older 4-year-olds and younger 5-year-olds. Children must be at least 4 years old to attend the three-day class. They must be at least 3 years old to attend the two-day class. Children must be potty trained. Immunization records are required. You may register your child at anytime throughout the year if your child's birthday is later in the year. Please call 815-234-8535 ext. 200 for more information.

Where: Jarrett Prairie Center  
Ages: 3-5 years  
When: Mon/Wed/Fri or Tues/Thurs  
Time: 9-11:30 am or 1-3:30 pm  
Min/Max: 6 / 20 - M/W/F & 6 / 14 - TU/TH  
Cost: \$90/month-M/W/F  
\$75/month-TU/TH

Registration is ongoing throughout the year.

### 2011-2012 Registration Schedule

February 15-18	Currently enrolled students and siblings
February 21-25	Byron residents
February 28	Open registration



## Canoeing the Rock

See the spring river on this easy float.

Where: Meet at Heritage Farm

When: Saturday, April 9

Time: 10 am - 1 pm

Cost: \$20/canoe

Ages: All

Min./Max.: 3 canoes/12 canoes

**Register by noon on April 8.**

## Boater Safety Class

This 2-day class covers all you need to know about safe boating practices.

Where: Meet at Jarrett Center

When: Tuesday & Thursday  
March 15 & 17

Time: 5-9 pm

Cost: Free

Ages: All

Min./Max.: 5 / 30

**Register by noon on March 11.**

## Animal Archery

Bring your own bow or use ours.

Where: South Shelter  
near Jarrett Prairie Ctr

When: Tuesdays  
April 12 and/or 26

Time: 5-7 pm

Cost: \$5/person

Ages: Ages 8 and up

Min./Max.: 5 / 20

**Register by noon on April 11 & 25.**



Save the date...

## A River Gathering June 16-19, 2011



For more information, please call  
815-547-7935 or email [tdawson@boonecountycorvationsdistrict.org](mailto:tdawson@boonecountycorvationsdistrict.org).



Co-sponsored by  
Rock Valley College &  
Four Rivers Environmental Coalition.

## Spring Fishing

Join us to break your cabin fever as we head over to the golf course for some fishing.

Where: Meet at Jarrett Center

When: Saturdays  
March 12 & 26

Time: 7-10 am

Cost: \$5/person  
5 and under free

Ages: All

Min./Max.: 5 / 50

**Register by noon on Mar. 11 & 25.**

## Hunter Education

This 3-day class covers ethics, fire-arms, and archery.

Where: Jarrett Prairie Center

When: Mon., Wed., Fri.  
Feb. 21, 23, 25  
Apr. 4, 6, 8

Time: 6 - 9 pm (M & W)  
6 - 10 pm (Fri.)

Cost: FREE

Ages: All

(must be able to pass a written test)

Min./Max.: 5 / 80

**Register by noon on 2/18 & 4/1.**

## Beekeeping Workshops

Learn techniques and tools of the trade.

Where: Jarrett Prairie Center

When: Sundays,  
Jan. 9, Feb. 13  
Mar. 13, Apr. 10

Time: 2 - 4 pm

Cost: \$2 / person

Ages: 3 and up

Min./Max.: 5 / 25



## Evening with Animals

Overnight in the museum. Bring a sleeping bag and pillows. The evening will be filled with games, crafts, and other "wild" fun.

Where: Jarrett Prairie Center

When: Friday-Saturday  
February 11-12

Time: 8 pm - 9 am

Cost: \$20/person  
includes snacks

Ages: 6 - 12

Min./Max.: 5 / 20

**Register by noon on February 8.**



*Supt. of Education Richie Wolf instructing a field trip group on canoeing. If you would like to bring a group on a field trip, please call Richie at 815-234-8535 x217.*

*Printed on 100% recycled paper.*



## Fun Trips!

### Trip to St. Louis

We're heading to St. Louis, Missouri to visit the Arch, the zoo, and the Budweiser Brewery.

Where: Jarrett Prairie Ctr.  
When: Saturday-Monday  
January 15-17  
Time: Depart at 10 am



Cost: \$300 / room  
Ages: All  
Min: 5  
Max: 12

**Register by noon on January 5.**

### A Day in Green Bay

Join us on this trip to this exciting city to see the Packers' home field and Hall of Fame. Fee includes hotel and transportation.

Where: Jarrett Prairie Ctr.  
When: Saturday-Sunday  
February 26-27  
Time: Depart at 10 am

Cost: \$175 / room  
Ages: All  
Min./Max.: 5 / 12

**Register by noon on February 11.**



### Fossil Hunt

Explore the limestone of Stone Quarry's quarry to find fossils--maybe even a trilobite! Fossil guides are supplied; bring tools if you wish. Come whenever you like during this event and stay until your buckets are full!

Where: Stone Quarry Park  
When: Saturday, April 2  
Time: 10 am - 2 pm  
Cost: \$2 / person  
Ages: All  
Min./Max.: 5 / 30

**Register by noon on March 30.**

### Reading the Prairie Landscape

We will hike through one of our oak savannah areas and discuss the natural history of the prairie landscape from the formation of the dolomite limestone 500 million years ago to the shaping of the upper surface during the last ice age. We will be walking down a shallow gully and dry creek bed, so please wear sturdy shoes and clothes that can get muddy!

Where: Jarrett Prairie Center  
When: Saturday, April 30  
Time: 1 - 3 pm  
Cost: Free  
Ages: All  
Min./Max.: 5 / 25

**Register by noon on April 27.**

### BARN PARTY

Take a tour of our heritage farm museum, play games pioneer children would have played, make a candle (pictured), and help prepare a snack over a fire. Parents are welcome at no cost.

Where: Heritage Farm  
When: Saturday, April 16  
Time: Noon - 2 pm  
Cost: \$4 / person  
Ages: All  
Min./Max.: 5 / 20

**Register by noon on April 13.**



### Animal Murder Mystery

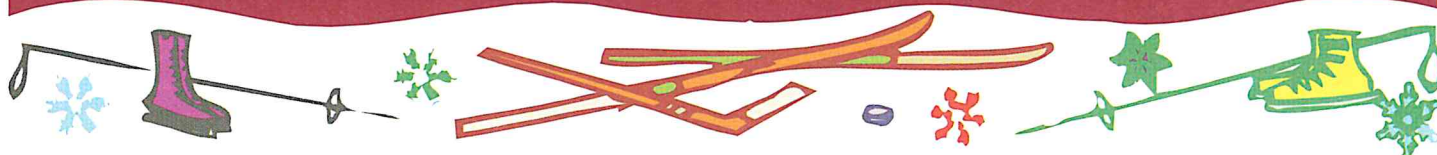
Everywhere you look in the woods and prairie, there's evidence of foul play! Scattered feathers, predator tracks, and old bones! Learn to read the clues and figure out whodunnit!

Where: Keller Educ. Ctr.  
When: Sat., Feb. 19  
Time: 2 - 4 pm  
Cost: \$4 / person  
Ages: All  
Min./Max.: 5 / 20

**Register by noon on February 16.**



## EVERYTHING for WINTER FUN!



### Ski and Scope

We'll cross country ski our trails for a little while and then warm up with hot chocolate in our observatory. Then we'll take out the telescope and look at the stars, planets, and nearly full moon. Beginners welcome; cost includes ski rental and hot chocolate.

Where: Keller Educ. Ctr.  
When: Friday, January 21  
Time: 5 - 9 pm  
Cost: \$5 / person  
Ages: All  
Min./Max.: 5 / 20

**Register by noon on January 19.**

### Ski and Scope with Crafts for Kids

Families are welcome to join us to ski our trails, then we'll have hot chocolate in our observatory. There will be constellation and star map crafts for younger participants, and everyone is welcome to head upstairs to look through the telescope. The nearly full moon is always a beautiful sight, and cold nights make the stars and planets shine. Cost includes ski rental, craft, and hot chocolate.

Where: Jarrett Prairie Center  
When: Saturday, January 22  
Time: 5 - 9 pm  
Cost: \$5 / person  
Ages: All  
Min./Max.: 5 / 20

**Register by noon  
on January 19.**

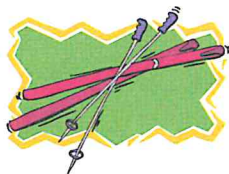


### Evening Skiing

Join us for a relaxing evening of cross country skiing along the trails at the forest preserve. It will be fairly dark, but with the snow, we'll be able to find our way with the half-moon. Maybe we'll see foxes, owls, or other nighttime creatures...you never know what surprises wait just around the curve.

Where: Jarrett Prairie Center  
When: Saturday, February 5  
Time: 5 - 8 pm  
Cost: \$5 / person  
Ages: All  
Min./Max.: 5 / 20

**Register by noon on February 2.**



### Cross-Country Skiing

We'll break out the skis and hit the trails on a low-key, low-pressure glide through the trees and prairie. Cost includes skis. Beginners welcome.

Where: Jarrett Prairie Center  
When: Sundays  
February 13  
February 20  
March 20  
Time: 1 - 4 pm  
Cost: \$5 / person  
Ages: All  
Min./Max.: 5 / 20

**Register by noon on the previous  
Wednesday.**

### Snow Camp

Spend the day sledding, skiing, building forts, snowmen, and snow sculptures. We'll also find animal homes and learn how animals stay warm in winter. There will be indoor crafts, snacks, and hot chocolate, too! Please bring a lunch, warm clothing and an extra pair of socks.

Where: Jarrett Prairie Center  
When: Friday, January 14  
Time: 9 am - 4 pm  
Cost: \$10 / person  
Ages: 6 - 12  
Min./Max.: 5 / 20

**Register by noon on January 12.**

### Ice Fishing

Bring your equipment for this unique outing at the golf course.

Where: Meet at Jarrett Center  
When: Saturdays  
January 22 & 29  
Time: 7-10 am  
Cost: \$5/person  
5 and under free  
Ages: All  
Min./Max.: 5 / 50

**Register by noon on Jan. 21 & 28.**





# 10 Homeschool Programs, Etc.



## Spotlight on Our Solar System



Discover something new about the planets in our own backyard.

Where: Weiskopf Observatory  
When: Fridays  
March 4 or 11  
Time: 7 - 9 pm  
Cost: FREE  
Ages: Families  
Min./Max.: 5 / 25

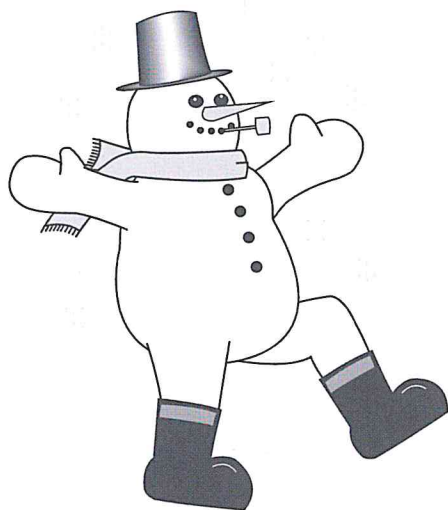
**Register by noon on Mar. 3 or 10.**

## Winter Constellations

Learn about Orion, Taurus, and the Big and Little Dippers.

Where: Weiskopf Observatory  
When: Fridays  
January 21 or 28  
Time: 7 - 9 pm  
Cost: FREE  
Ages: Families  
Min./Max.: 5 / 25

**Register by noon on 1/20 or 1/27.**



**(HS) = Homeschool Program**

*Printed on 100% recycled paper.*

## Nature in Winter (HS)

We will spend the day exploring and playing outside in the snow following animal tracks, building an igloo, and looking at animal homes; we'll also try cross country skiing and go sledding down our big hill. Bring a lunch and lots of warm clothes--we'll provide hot chocolate to warm up between activities.

Where: Keller Educ. Ctr.  
When: Mon., Jan. 24  
Time: 9 am - 2 pm  
Cost: \$10 / person  
Ages: 6 and up  
Min./Max.: 5 / 20

**Register by noon on Jan. 19.**



## Winter in Pictures (HS)

We'll take photos (and print them) and create lots of different masterpieces with a winter theme. Snow sculptures, watercolor, and snowflake art are just a few things we'll try. We'll be indoors and outdoors, so please dress for the weather. Bring a lunch; we'll provide the hot chocolate.

Where: Keller Educ. Ctr.  
When: Mon., Feb. 14  
Time: 9 am - 2 pm  
Cost: \$10 / person  
Ages: 6 and up  
Min./Max.: 5 / 20

**Register by noon on Feb. 9.**

## Life on the Prairie (HS)

What was it like to pack up everything and move out west in a covered wagon? What was it like to hunt buffalo in huge herds that spread for miles? We'll learn this and more as we discuss the history of Illinois at the time of settlement. Try your skill at archery and setting snares; learn some pioneer games and try to start a fire with flint and steel. Bring a lunch and dress for the weather.

Where: Keller Educ. Ctr.  
When: Mon., Mar. 14  
Time: 9 am - 2 pm  
Cost: \$10 / person  
Ages: 6 and up  
Min./Max.: 5 / 20

**Register by noon on Mar. 9.**



## Welcome Spring! (HS)

We'll head out into the far woods and a nice oak savannah to see the spring wildflowers blooming. There is plenty going on at this time of year, and after the prairie burn, we're likely to find deer antlers, owl pellets, bones, tracks, scat...and of course, lots of flowers. We will also explore the gulley and along some of the back prairie areas and do some journaling, drawing, play games, and enjoy a nice day.

Where: Keller Educ. Ctr.  
When: Mon., Apr. 11  
Time: 9 am - 2 pm  
Cost: \$10 / person  
Ages: 6 and up  
Min./Max.: 5 / 20

**Register by noon on Apr. 6.**





## Art at the Jarrett Prairie Center

### Forest Preserve "Images"

Come and see some recent photos of the Byron Forest Preserve. After January, these photos will be on permanent display at the Keller Education Center.

**January 3 thru January 31**



### Trophy Fish Exhibit

Show your fish mount for a chance to win a prize for best of show. All fish must be received by February 28th.

**March 1 thru March 31**

### Hunter Gallery

Successful hunters email your deer pictures to [richie@byronforest-preserve.com](mailto:richie@byronforest-preserve.com) and we'll enlarge and frame them for display in the Jarrett Prairie Center. Include the name, county harvested, year, and method of kill. Pictures must be received by January 28th.

**February 1 thru February 28**



*Richie Wolf, Superintendent of Education at the Byron Forest Preserve with his buck and his daughters, Raina (on left) and Celeste.*

## Growing Up *WILD* Professional Development Workshop

**Exploring Nature with Young Children** is an early childhood education activity guide that builds on children's sense of wonder about nature and invites them to explore wildlife and the world around them. Through a wide range of activities and experiences, it provides a foundation for developing positive impressions about nature while also building lifelong social and cognitive skills. This program is geared towards preschool teachers and parents and includes the guide.

Where: Jarrett Prairie Ctr.

When: Saturday  
February 19

Time: 9 am - 2 pm

Cost: \$15 / person

Ages: Adults

Min./Max.: 5 / 12

**Register by noon on February 16.**

## Watercolor Workshop



We will learn watercolor techniques and explore ways of making this medium work for you! All materials are provided for this workshop.

Where: Keller Educ. Ctr.

When: Saturday  
January 15

Time: 1 - 4 pm

Cost: \$5 / person

Ages: 8 and up

Min./Max.: 5 / 20

**Register by noon on January 12.**

## Website Upgrade

The District's main website ([byronforestpreserve.com](http://www.byronforestpreserve.com)) is being upgraded and re-designed. We're very excited about the changes. The site will not only be more secure but it will also be more user friendly with more information. It should be up and running by January 1st. We apologize for any inconvenience but please check it out in a few weeks to see the new features!

[http://www.  
byronforestpreserve.com](http://www.byronforestpreserve.com)



*Do you have an idea for a program or event for the Byron Forest Preserve, PrairieView Golf Club, or Stone Quarry Park?  
Call 815-234-8535 x200.*



Se habla español  
815-234-8535 x200

### Junior Girl Scouts

#### *Frosty Fun*

We'll build snow sculptures, go skiing and sledding, and examine snowflakes for this badge. Please dress for the weather.

Where: Jarrett Prairie Ctr.

When: Sat., Feb. 12

Time: Noon - 4 pm

Cost: \$8 / scout

Ages: Junior Scouts

Min./Max.: 5 / 20

**Register by noon on February 9.**



### Junior Girl Scouts

#### *Visual Arts*

We'll learn about color and lines and produce lots of artwork to earn this badge. Dress to get messy (which is always fun!)

Where: Jarrett Prairie Ctr.

When: Saturday, March 19

Time: Noon - 4 pm

Cost: \$8 / scout

Ages: Junior Scouts

Min./Max.: 5 / 20

**Register by noon on March 16.**



### Junior Girl Scouts

#### *Finding Your Way*

We'll be outside most of the time for this one with compasses and maps. Learn how to find the trail and to follow markers, know your direction, and how to show others where you are.

Where: Keller Educ. Ctr.

When: Sunday, April 17

Time: Noon - 4 pm

Cost: \$8 / scout

Ages: Junior Scouts

Min./Max.: 5 / 20

**Register by noon on April 13.**

### Brownie Try-It

#### *Science in Action*

We will make glop, go on a science scavenger hunt, and play with colors to earn this badge.

Where: Keller Educ. Ctr.

When: Thurs., Jan. 27

Time: 6-8:30 pm

Cost: \$8 / brownie

Ages: Brownies

Min./Max.: 8 / 20

**Register by noon on January 24.**



### Brownie Try-It

#### *Outdoor Adventurer & Make It, Eat It*

These two badges go great together! We'll do a couple of outdoor activities in the morning, then come inside and prepare our lunch—you'll make it yourself (with a little help). After we've eaten, we'll head back outside for a longer hike and finish up the adventurer badge. Dress for the weather.

Where: Keller Educ. Ctr.

When: Saturday, April 9

Time: 10 am - 3 pm

Cost: \$15 / scout

Includes both badges and lunch.

Ages: Junior Scouts

Min./Max.: 8 / 20

**Register by noon on April 6.**

### Brownie Try-It - Senses

Explore the senses to earn this badge! Experience different smells, tastes, and sounds, make an optical illusion, and learn how to spell your name in sign language. We will be indoors.



Where: Keller Educ. Ctr.

When: Thurs., Mar. 17

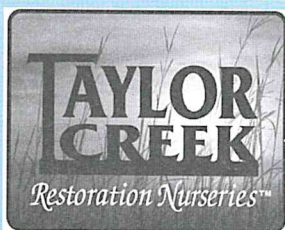
Time: 5 - 7:30 pm

Cost: \$8 / brownie

Ages: Brownies

Min./Max.: 8 / 20

**Register by noon on March 15.**



Native Plants and  
*only*  
Native Plants  
for over 30 years.

Taylor Creek Restoration Nurseries  
17921 Smith Road • Brodhead, Wisconsin 53520  
(608) 897-8641 • [www.appliedeco.com/tcrn](http://www.appliedeco.com/tcrn)

### More Badge Workshops!!

See page 15 for more  
Junior Girl Scout Badge  
Workshops offered at  
Stone Quarry Recreation Park!



# Scout Badge Workshops

13

Se habla español  
815-234-8535 x200

## Boy Scouts - Indian Lore

Where: Jarrett Prairie Ctr.  
When: Thurs., Feb. 24  
Time: 5 - 8 pm  
Cost: \$7 / scout  
Ages: 10 and up  
Min./Max.: 5 / 25

**Register by noon on Feb. 23.**

## Boy Scouts - Forestry

Where: Jarrett Prairie Ctr.  
When: Thurs., Mar. 24  
Time: 5 - 8 pm  
Cost: \$7 / scout  
Ages: 10 and up  
Min./Max.: 5 / 25

**Register by noon on Mar. 23.**

## Boy Scouts Fish/Wildlife Management



Where: Jarrett Prairie Ctr.  
When: Thurs., April 28  
Time: 5 - 8 pm  
Cost: \$7 / scout  
Ages: 10 and up  
Min./Max.: 5 / 25

**Register by noon on April 27.**

## Webelos - Naturalist

Where: Jarrett Prairie Ctr.  
When: Thurs., Jan. 6  
Time: 6 - 8 pm  
Cost: \$7 / webelo  
Ages: Webelos  
Min./Max.: 5 / 25

**Register by noon  
on Jan. 5.**

## Webelos - Forester

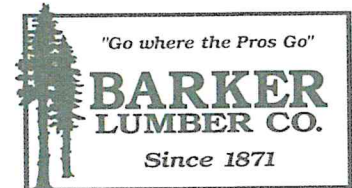
Where: Jarrett Prairie Ctr.  
When: Thurs., Feb. 3  
Time: 5 - 7 pm  
Cost: \$7 / webelo  
Ages: Webelos  
Min./Max.: 5 / 25

**Register by noon on Feb. 2.**

## Webelos - Naturalist

Where: Jarrett Prairie Ctr.  
When: Thurs., Mar. 3  
Time: 5 - 7 pm  
Cost: \$7 / webelo  
Ages: Webelos  
Min./Max.: 5 / 25

**Register by noon on Mar. 2.**



703 N. Walnut Street  
P.O. Box 907  
Byron, IL 61010  
www.barkerlbr.com

Phone: 815.234.4421  
Fax: 815.234.2397

E-mail: info@barkerlbr.com

**We're your  
window experts!**

## Need a badge?

*Do you need a specific badge?  
Just let us know. Call Janet at  
1-815-234-8535 x232.*

*Thank you...*

*Thank You...*

*Thank you to this year's  
sponsors of the Blaze: Barker  
Lumber, Byron Bank, Classics  
& Colonials, Gerke's Lawn  
Care, Rockford Structures, and  
Taylor Creek Nurseries.*

*If you would like to adver-  
tise your business in the Blaze,  
please call Michelle at 815-  
234-8535 x224.*

*Printed on 100% recycled paper.*

**CLASSICS & COLONIALS**  
LTD.  
**HARRY ADAMS**

B U I L D E R

**CUSTOM BUILT HOMES**

& REMODELING

815 234-8739 BYRON, IL.



## Middle School Dances

Come on out to the middle school dances this winter and spring! Mark these dates on your calendar and join your friends, DJ Ryan from Sound Productions and the Stone Quarry Crew for some fun!

Where: Stone Quarry Park  
When: Fridays  
Jan. 14, Feb. 4 & 25,  
Mar. 11 & 18, Apr. 15 & 29  
Time: 7-10 pm  
Cost: \$5/person  
Ages: Middle School Only

## Midnight Madness

Stone Quarry will be open until midnight, so come out and partake in some late night skateboarding, jam out some guitar hero, and hang out with friends.



Where: Stone Quarry Park  
When: Saturdays  
Jan. 8, Feb. 19, Mar. 5, Apr. 9  
Time: 8 pm - Midnight  
Cost: \$5/person  
Ages: 6th-12th grade

## Mother/Daughter PJ Party



Looking for some special time with the girls only? Dress comfortably in your PJ's and slippers and come to

a girls night in. We'll be watching a chick flick while we prepare ourselves for a night on the red carpet! Girls, this is your chance to do Mom's hair, makeup, and nails! And, we'll take time for dessert! Bring your own beauty supplies.

Where: Stone Quarry Park  
When: Saturdays  
Jan. 22, Mar. 12, Apr. 16  
Time: 6 - 8 pm  
Cost: \$10 / couple  
\$2 / additional daughter  
Ages: All  
Min./Max.: 10 / 30

**Register by noon on the Wednesday before the program.**

## Feelin' Lucky?

Well, here's your opportunity to capitalize on it! We will be taking a charter bus and heading to Diamond Jo Casino in Dubuque, Iowa, for a fun-filled day of pulling slots, rolling dice, and playing poker! The Diamond Jo Buffet Lunch is included in your cost.

Where: Stone Quarry Park  
When: Saturdays  
Feb. 5 & Mar. 26  
Time: 10 am  
Cost: \$20 / person  
Ages: 21 and up  
Min./Max.: 30 / 45

**Register by Jan. 22 & Mar. 12.**

## Tumbling Class

Are you interested in learning the art of tumbling? Tumbling for beginners through advanced, ages 6 and up. We will open a tot class for ages 3-5 with adequate interest. We offer small class sizes, generally 4 students per class to ensure quality mat time and instructions. We strive to build strength while instilling confidence.

Where: Stone Quarry Park  
When: Tues. & Thurs.  
Time: 4 - 9 pm  
Cost: \$12/hour,  
\$48/mo. (4 classes), \$60/mo. (5 classes)  
\$10/2nd class/week, \$10/sibling  
Ages: 6 and up  
Instructor: Mary Wright Sheker

**Registration, call 815-391-3999.**

## Stunt and Cheer Class

This class is for individuals interested in learning and advancing their cheering and stunt skills. You must be currently enrolled in an All the Wright Moves Tumbling Class in order to take this class.

Where: Stone Quarry Park  
When: Wednesday nights  
(all year round)  
Time: 4 - 9 pm  
Cost: \$10 / person / week  
Ages: 7 & up

Instructor: Mary Wright Sheker  
**Registration, call 1-815-391-3999.**

## Paintball Play Day

### Let's Get Dirty!

Stone Quarry is sponsoring Winstead Outdoors in an effort to provide affordable paintball opportunities for individuals of the Ogle County area! We have three awesome fields to choose from and will supply all the gear needed to play! Our price includes admission for two games, 200 rounds of paint, helmets with eye protectors, neck protectors, chest protectors, one tank of CO2, and a paintball marker (gun). Extra paint and CO2 are available for more games at a minimal fee. We also offer group rates for private parties and corporate outings.

Where: Stone Quarry Park  
When: Saturday, April 30  
Time: 1 - 6 pm  
Cost: \$25 / person  
(\$15/person if you have your own equipment)  
Ages: 10 and up

## KidZone

This program is perfect for moms and dads who are looking for a little free time and for kids who are looking for some fun! Featuring activities, games, prizes, and fun in the park. Pizza and pop provided. Extra money needed for games and other concession items.

Where: Stone Quarry Park  
When: Saturdays  
Jan. 29, Feb. 26,  
& Apr. 2  
Time: 5:30 - 9:30 pm  
Cost: \$10 / person  
Ages: 6 and up  
Min./Max.: 5 / 20

**Register by noon on the Wednesday before the program.**



## Twisted Tie Dyes

Are your kids looking to add some color to their wardrobe? Tired of looking at the same old boring, gray stained t-shirts? Well, bring your kids out to the park for some fun tie dying t-shirts. We will be our own fashion designers, and will be making all different colored t-shirts from scratch. T-shirts will be provided for each participant. Pizza and pop included.

Where: Stone Quarry Park  
When: Sundays

Jan. 23, Feb. 13  
Mar. 13, Apr. 17

Time: 2 - 4 pm  
Cost: \$10 / person  
Ages: 6 & up  
Min./Max.: 5 / 20

Register by noon on the Wednesday before the program.

## Stone Quarry Hours

### Winter / Spring Hours

Mondays, Wednesdays  
& Fridays~4-7pm  
Tuesdays & Thursdays~4-8pm  
Saturdays~11am-5pm  
Sundays~1-5pm

### No School Days/Half Days

Fri, Jan. 14 - open Noon-7pm  
Mon, Jan. 17 - Noon-7pm  
Mon, Feb. 21 - Noon-7pm  
Thurs, Apr. 21 - Noon-8pm  
Fri, Apr 22 - Noon-7pm

### Spring Break Hours

Mon, Mar. 21 - Fri, Mar. 25  
Open Noon-7pm

All hours are subject to change due to weather related conditions or low attendance.

## Junior Girl Scout Badge Workshops

### Model Citizen

As part of the Girl Scout Law, you promise to "make the world a better place." You can help do this by being a good citizen. Come find out what it means to be a model citizen and earn this badge.

Where: Stone Quarry Park  
When: Sat., Jan. 15

Time: 1 - 5 pm  
Cost: \$8 / scout  
Ages: Junior Girl Scouts  
Min./Max.: 5 / 20

Register by noon on January 12.

### FUN and Fit

Have more energy. Sleep better. Study better. Feel great! Earn this badge while learning how you can be fit by making right choices every day and by adding fun exercises to your week.

Where: Stone Quarry Park  
When: Sat., Jan. 29

Time: 1 - 5 pm  
Cost: \$8 / scout  
Ages: Junior Girl Scouts  
Min./Max.: 5 / 20

Register by noon on January 26.

### Looking Your Best

Looking your best is something anyone can do. Most of all, it involves what is right for you.

Where: Stone Quarry Park  
When: Sat., Feb. 12

Time: 1 - 5 pm  
Cost: \$8 / scout  
Ages: Junior Girl Scouts  
Min./Max.: 5 / 20

Register by noon on February 9.

### Caring for Children

Earn the requirements for this badge.

Where: Stone Quarry Park  
When: Sat., Feb. 26

Time: 1 - 5 pm  
Cost: \$8 / scout  
Ages: Junior Girl Scouts  
Min./Max.: 5 / 20

Register by noon on February 23.

### Food Power



Eating a properly balanced diet helps you do your best. Poor eating habits can make you tired, cranky, and even sick! Learn how to eat right while earning this badge.

Where: Stone Quarry Park  
When: Sat., Mar. 12

Time: 1 - 5 pm  
Cost: \$8 / scout  
Ages: Junior Girl Scouts  
Min./Max.: 5 / 20

Register by noon on March 9.

### Walking for Fitness

Did you know that walking is the easiest way to stay fit? All you need are good walking shoes, a little free time, and a buddy. So, grab a friend, and point your shoes north, south, east, or west...whichever way suits you best!

Where: Stone Quarry Park  
When: Sat., Apr. 22

Time: 1 - 5 pm  
Cost: \$8 / scout  
Ages: Junior Girl Scouts  
Min./Max.: 5 / 20

Register by noon on April 19.



## Summer Camp 2011 Sign Up & SAVE \$\$!

We are offering an early registration incentive for summer camp! Sign up now and save \$\$\$! Your child will get a \$10 punch card to the Food Factory for every week paid in full by May 1, 2011. Call 815-234-8535 or 815-234-8900 for inquiries and registration. The cost is \$105 per camper per week and \$95 per sibling per week from January 1 thru May 1, 2011.

### ~ Birthday Parties At Stone Quarry ~

Tired of cleaning up the mess after the big birthday party? Well, next time, have it at Stone Quarry! Our birthday party package includes two slices of pizza, a drink, and admission to the park for each guest. The park admission includes unlimited use of everything outside...splash playground, batting cages, mini-golf, skate park, basketball courts, and playground. All for only \$30 reservation fee and \$8/person. You can choose to have your party in several locations...the party room or one of our three outdoor shelters. Reserve your party now before we are all booked up! Call 815-234-8900.

### ~ Party Room Rentals ~

Looking for a large space to host your family reunion, anniversary party, or any other family, or group outing? Stone Quarry has the place for you! We have a large party room that can seat and hold 250 people. Along with the party room, we have a stage, podium, 60-inch television, 150 folding chairs, and 25 folding tables. This is the perfect place to host any outing, any time of the year. There is a separate fee for the use of our equipment if we set it up, and after-hour charges may apply to rentals extending beyond our typical hours. Call 815-234-8900 for more information!

## PrairieView Golf Club

### Last Minute Gift Ideas

*Make it a Merry Christmas for that golfer in the family! Come on out to PrairieView's Pro Shop and we'll help you find the perfect gift at an affordable price. The Pro Shop will be open through December 23rd for those last minute shoppers.*

*~ Season Golf Pass Special ~  
Save 10% on  
2011 Season Passes  
if you buy  
before December 23, 2010!*

815-234-4653

[www.prairieviewgolf.com](http://www.prairieviewgolf.com)





Se habla español  
815-234-8535 x200

## Birthday Parties

Choose the Forest Preserve to organize your child's next birthday party. Call Richie at 815-234-8535 ext. 217 to schedule your next party. Themes include: Tea Party, Native Americans, Sky's the Limit, Goodness Snakes, Insects of Our World, and Where Do Butterflies Go When It Rains?

### *Deluxe Party*

*\$75 / 12 children  
(additional \$30 for more  
than 12 children)*

*(cake, ice cream, tableware,  
birthday banner, and program)*

### *Standard Party*

*\$45 / 12 children  
(\$5/additional child)  
(program only)*

## Canoe Rentals

We rent canoes! Just call us with your date and number of canoes needed. We'll haul you upstream on the Rock River and accompany you back to your vehicles at the River Park parking lot on River Road across from Heritage Farm.

Canoes are \$25 each and include paddles and life jackets. You must rent at least 3 canoes. Call Richie at 815-234-8535 ext. 217 for this unique and fun outing.

## Recycling Station

The Byron Forest Preserve District has a mission to provide for preservation of natural resources, to provide education about natural and cultural heritage, and to provide recreation. The District developed a recycling station and is educating hundreds of students on recycling through the International Earthkeepers program. Materials from the recycling station are collected and sorted twice per month, producing up to three tons of recyclable material like cardboard, glass, newspaper, plastic, and metals. The cost of hauling is covered through a cooperative agreement with the Ogle County Solid Waste Management Department.

The station accepts glass, aluminum, plastic #1-#5, & #7, tin, steel, mixed paper, cardboard, and newspaper. The bin is located in the maintenance parking lot at 7993 North River Road, Byron, Illinois. The station is open during daylight hours seven days per week. Please recycle responsibly by leaving the area cleaner than when you arrived. **You no longer need to separate the items in each bin.**

## Outreach

We offer educational programs to any group including retirement homes and nursing facilities for a small fee. Using our nature staff and nature stuff, we come to you and deliver exciting and educational programs including:

- Birds of a Feather
- Indian Life (w/traditional dress)
- Animal Encounter (w/live animals)

***Call today to book your  
next on-site program!***

## Field Trips

**to the Natural History Museum,  
Weiskopf Observatory, &  
Heritage Farm Museum**

Scouts, schools, and senior groups are welcome to the Forest Preserve for an educational and fun guided tour of our great museums. Staff welcome and give tours for the low cost of \$1.50 per person with a minimum of \$30 per group. We offer many sessions to choose from including prairie ecology, astronomy, and museum tour. Call 815-234-8535 ext. 217 to schedule your next outing with us.

## Rare Bird Hotline

The Byron Forest Preserve is hosting a "Rare Bird Alert" hotline. Call 1-815-234-8535 ext. 203 to hear updated reports or to leave a message about where, when, what, and how to spot a rarity that you've found.



## PRESCRIBED FIRES

*By Katie Sullivan, Asst. Supt. of Restoration*

Prescription burns are performed at the Byron Forest Preserve. All staff who participate with the fires have completed several courses that make us qualified to safely execute a prescribed burn. A prescribed burn is defined as the intentional starting of a fire that is used primarily as a land management tool.

Prescription burns have been a part of our ecosystem for hundreds of years. There is evidence of fire being used as a tool during Native American times. The reasons for fires have not changed all that drastically from Native American times to now. The Native Americans utilized fire to help improve local habitat which helped improve hunting. They also used fire to ease traveling.

Prescription burns play an important role in managing the health of fire dependent ecosystems. Savannas, oak woodlands and prairies are all fire dependent ecosystems. The Byron Forest Preserve has all three of these ecosystems. Prescribed burns help to stimulate growth and increase seed production. This in turn provides higher quality and increased quantity of forage / food for animals that live within these fire dependent ecosystems. Fire also helps to increase the soil richness by returning nutrients back to the soil



through nutrient cycling. We also rely on prescribed burns to help us control undesirable and exotic and invasive plants.

Prescribed burning season happens twice per year. In the fall, we mainly use prescribed burns in the woodlands when the leaves have fallen and are dried out, littering the forest floor. Woodland burns are low in intensity and are usually very slow moving fires. In the spring, we mainly use prescribe fires for the grassland ecosystems. Prairie burns contrast woodland burns by being fairly intense and very quick moving.

Without the use of prescribed burns, our prairies would become overrun with invasive non-native woody plants. Our oak woodlands and savannas would turn into overgrown dense dark woodlands full of fast growing shade tolerant aggressive trees and shrubs. The animals and plants that rely on fire dependent ecosystems would be displaced from their homes.

Prescribed burns play a very important role in ecosystem management. The trained staff at the Byron Forest Preserve is dedicated to protecting and improving our local ecosystems' health. Because of this, we use prescribed fire as one of our management tools in our savannas, woodlands, and prairies.

If you would like to volunteer in the Restoration Department, please call 815-234-8535 x217.





Se habla español  
815-234-8535 x200

# Facilities 19



## PrairieView Golf Club

German Church Road, Byron  
815-234-4653  
[www.prairieviewgolf.com](http://www.prairieviewgolf.com)

PrairieView Golf Club is a public, 18-hole bent grass championship golf course. Rated 4 stars by Golf Digest. This challenging course features bent grass tees, greens, and fairways. PrairieView also offers a full service practice facility, equipment rental, fully stocked pro shop, lessons, and handicap services. The Prairie Grass Club is open for relaxing with your friends after a round of golf. Facilities are also available for rental for weddings, corporate outings, & reunions.



## Weiskopf Observatory

7993 North River Road, Byron  
815-234-8535 ext. 216  
[www.byronforestpreserve.com](http://www.byronforestpreserve.com)

View the stars and planets through our 11" Celestron telescope. Experienced staff will guide you through the skies. Free public viewing on Saturdays, year round and Tuesdays in June, July, and August. Open from dark until three hours after dark. Call for viewing conditions.



## Jarrett Prairie Center

7993 North River Road, Byron  
815-234-8535 ext. 200  
[www.byronforestpreserve.com](http://www.byronforestpreserve.com)

Habitat exhibits, dioramas, audio interpretation, and a spectacular view of the prairie are just a few of the features at the Jarrett Prairie Center which is open daily, year round. You will also see wetland, woodland, and prairie environments on display along with displays depicting pre-European settlement conditions. A gift shop is also available to purchase an awesome souvenir! Also available for rental.



## Keller Education Center

7993 North River Road, Byron  
815-234-8535 ext. 200  
[www.byronforestpreserve.com](http://www.byronforestpreserve.com)

Relax and enjoy watching the birds and wildlife from the many windows of our newest addition. Open daily for public viewing. Classrooms accommodate Forest Preserve programs and can be rented for family reunions, meetings, and other events.



## Stone Quarry Recreation Park

6845 German Church Road, Byron  
815-234-8900  
[www.stonequarrypark.com](http://www.stonequarrypark.com)

Stone Quarry Recreation Park has something for everyone! Many programs and activities are offered all year round. Amenities include: arcade, pool table, mini-putt, batting cages, skate park, air hockey, playground, volleyball pit, basketball courts, horseshoe pits, and a water splash playground. Picnic shelters and a party room are also available for rental for reunions, company outings, and meetings.



## Heritage Farm Museum

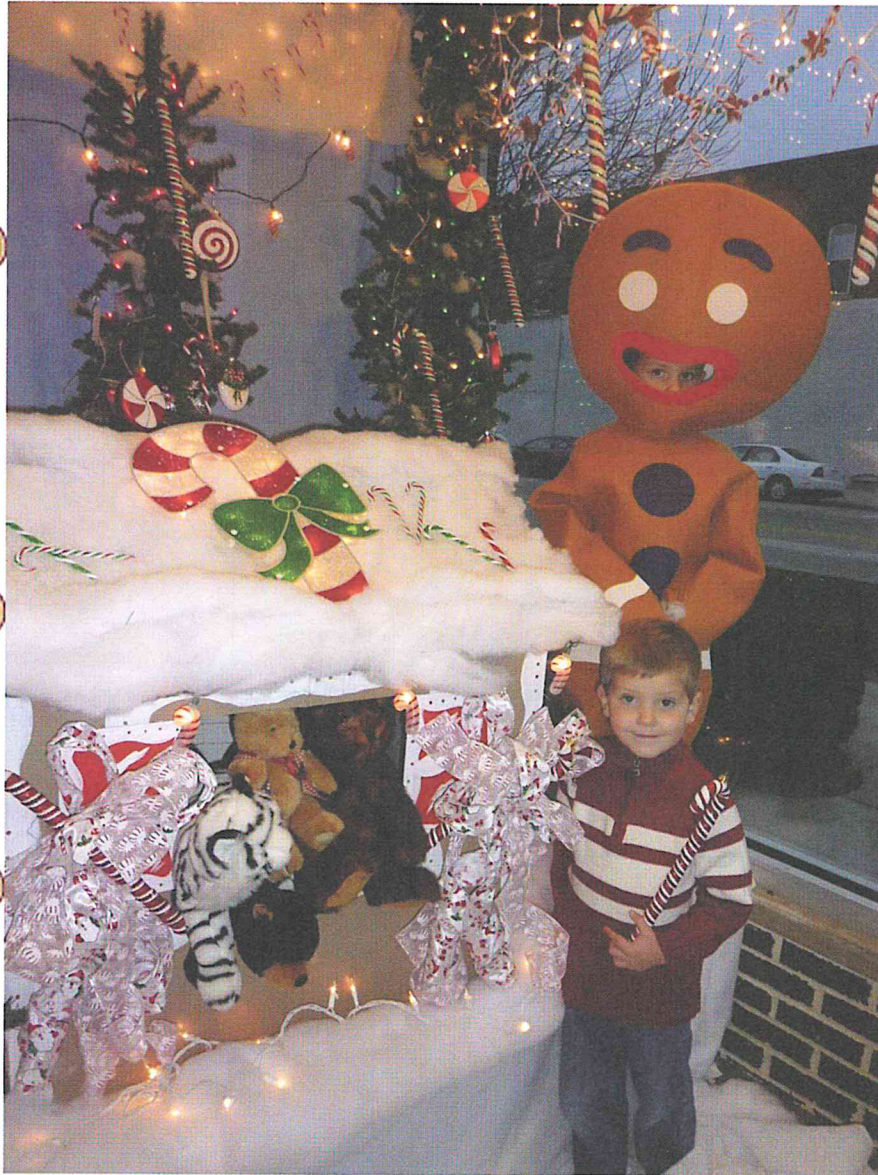
8059 North River Road, Byron  
815-234-8535 ext. 217  
[www.byronforestpreserve.com](http://www.byronforestpreserve.com)

Enjoy a guided tour of this 1800s farm and museum with audio interpretation. Includes a grout house, corn crib, wind mill, "residents", and more! Open daily April 1-October 31. Self-guided tours are free. A small fee may be charged for guided tours.

*Printed on 100% recycled paper.*



# Happy Holidays!



*Celebrate...  
the  
tradition of  
giving,  
the beauty  
of the  
season  
and a New  
Year of  
peace and  
happiness*



## Byron Bank



Davis Junction 815-645-2610

Byron 815-234-2561

Poplar Grove 815-323-1452



Byron Forest Preserve  
7993 North River Road  
PO Box 1075  
Byron, IL 61010

PRESORT STANDARD  
US POSTAGE PAID  
BYRON IL 61010  
PERMIT NO 67

### Postal Patron

*Printed on 100% recycled paper.*