



Spring 1993

BYRON FOREST PRESERVE DISTRICT NEWS

Jack F. Philbrick, Director

PRESERVATION - EDUCATION - RECREATION

Michelle Lipps, Editor

HOUSE BILL 2320 VERSUS SENATE BILL 91

Less than a month ago, a bill was introduced in the Illinois State Senate aimed at changing the method of selection of the governing of the Byron Forest Preserve. Two weeks later, a second bill was introduced in the Illinois House.

Many people have asked what is the difference.

The difference is very significant to you, the resident of the district.

House Bill 2320 gives you, the voter, the right to select whether you want an appointed board or an elected board.

Senate Bill 91 does not give the local residents the choice. Senate Bill 91 simply mandates the change when it becomes law. It does not provide for the return to an appointed board if the electorate wants.

In short, Springfield makes the choice for you in Senate Bill 91 and you make your own choice in House Bill 2320.

INSURANCE RESERVE WILL *LOWER TAXES*

This past May, after four years of study and discussion, the Byron Forest Preserve District Board of Commissioners established an insurance reserve that will allow them to discontinue a major tax burden on the residents of the district.

Presently, all taxing bodies are required to carry liability insurance in Illinois.

Mandated insurance coverage is presently levied on the property owners annually and it is over and above the cost of operation levies. Under the new

method, the board will levy for insurance for only the next seven years; and at that time, the insurance reserve will be sufficient to pay all future insurance premiums and claims from the interest accumulated by the fund.

Following the lead of the Byron Fire Protection District, the Byron Forest Preserve District is the first forest preserve district to establish this method for lowering taxes. Using very conservative estimates, it is felt that this could reduce the tax needed for all operations of the district by 1/3 by the year 2000.

Some immediate savings will be felt in 1994 if the deductible level of existing coverage can be raised. The present board has stated that it will not dip into these funds unless it is to be used to reduce or hold taxes in line as long as they sit as a board.

LOOK WHAT'S INSIDE...

New Gift Shop Items

Spring Programs

Golf Lessons

Spring Cleaning Tips

NEW ITEMS AT JPC GIFT SHOP

Hey kids....have you ever heard of popping corn on-the-cob? It pops on the cob, right in your microwave. What about starting your own rock collection. We have all the ingredients to encourage any young scientist to start collecting: a display box for your collection, 24 different minerals and fossils to choose from, and educational geological explanation labels that stick on the lid of your collection box.

And parents....tired of finding kindling or rolling newspaper to start your fire in the fireplace? Try our Qwick Wick Fire-Starter. It contains all natural wax and wood products so it's good for the Earth. It lights instantly and maintains an 8-10" flame for 30 minutes. Just place 2" under dry logs, light wick, and enjoy!

Have you ever thought about exploring nature through music? We carry a variety of "Dan Gibson's Solitudes--Environmental Sound Experiences." Solitudes transforms any place into a vibrant natural world. Peaceful sounds relax and settle you into luxurious sleep. Available in both compact discs or cassette tapes.

What better way to capture the spirit and beauty of nature's own handiwork than with a treasury of best-loved wild flowers? A simple shake of the "White Swan Specialty Seed Gardens" will create a 500 sq. ft. garden of wild flowers. No special care needed--plant in spring, summer, or fall, and water as usual.

If you haven't had a chance to stop by our Jarrett Prairie Center Gift Shop lately, you are in for a big surprise. New items are arriving weekly. Our items make great gifts for people of all ages. We also carry greeting cards printed by a local artist, notecards and stationary, and a large variety of books for all ages. Don't miss out.....come check us out.....Monday - Saturday 8:30 - 4:30, and Sunday 1 - 4:30.



PRAIRIE ROCKERS ON DISPLAY

The "Prairie Rocker" (pictured above) is on sale now at the Jarrett Prairie Center Gift Shop.

The rocker is 18 inches tall. It is made from walnut that was harvested in the Byron Forest Preserve District from storm-damaged trees. The wood is aged and after seven years, used by the maintenance staff to produce the attractive folding rockers.

These chairs are branded, "Hand-made (at the) Prairie Preserve, Byron, Illinois 61010". The chairs are naturally treated with Tounge Oil and sell for \$42 plus tax.

The rockers will be an exclusive, limited edition sales item in the Jarrett Prairie Center and orders for Christmas must be placed before November 1, 1993.

Annual Christmas Craft Show '93

Reminder....If you are interested in selling your nature-related crafts on consignment in our gift shop or are interested in participating in our Annual Christmas Craft Show '93, please contact Cathie Francis as soon as possible. Plans are underway!! 234-8535 ext. 203.

SPRING PROGRAMS SCHEDULED

Please call (815) 234-8535 to register for any programs.

APRIL

- 6, 8,
13, 15 **Beginning Marquetry**
Jarrett Prairie Center - 9:30-11:30 AM. Instructor - Howard Fox. Fees - \$20 per person and \$10 for senior citizens.
- 6 **Basic Home Gardening - How to plan a productive garden that really produces**
Jarrett Prairie Center - 7-9 PM. Instructor - Barb Larson, University of Illinois Cooperative Extension Service. **Free program.**
- 8, 15,
22, 29 **Nature Drawing for Beginners**
Jarrett Prairie Center - 7-8:30 PM. Instructor - Rick Davis, an art teacher from Ashton and a known area nature artist. Fees - \$20 per person and \$10 for senior citizens.
- 13 **Bats in Ogle County**
Jarrett Prairie Center - 7-9 PM. Instructors - Jeff Schafermeyer, a graduate student from Lorado Taft Field Campus, and Mike Eytalis. **Free program.** Bat house kit is \$8 if "make and take" is desired.
- 17 **Square Foot Gardening. How to use small areas and yet have good yields for your efforts.**
Jarrett Prairie Center - 9-11 AM. Instructor - Bob Elke, Master Gardener. **Free program.**
- 19 **Beginning Oil Painting**
Jarrett Prairie Center - 2 classes, 9 AM - Noon and 6-9 PM. Instructor - Marsha Rosenbaum, "Made By Hand" in Conover Square. Fees - \$20 per person and \$10 for senior citizens.
- 20, 22 **How to Build and Maintain a Small Pond with a Fountain in Your Yard**
Jarrett Prairie Center - 7-9 PM. Instructors - Marty Johnson. **Free program.**
- 27 **How to Plan a Party on the Prairie** - using the Jarrett Prairie Center for your special event.
Jarrett Prairie Center - 7-9 PM. Instructor - Carolyn Ashley. **Free program.**

MAY

- 4, 5, 6 **Prairie Ecology**
Jarrett Prairie Center (sponsored by Rock Valley College) - 5:30-7:30 PM. Instructor - Mickey Bowman, Deputy Director and Education Coordinator at the Byron Forest Preserve District. Fee - \$13 per person. To register for this class, please call Rock Valley College at (815) 654-4250 or FAX to 654-4459.
- 8 **Spring Flower Walk**
Jarrett Prairie Center - 9-10:30 AM. **Free program.**
- 11 **Videotaping in Nature/Using a Camcorder**
Jarrett Prairie Center - 6-8 PM. **Free program.**
- 15 **Kite Day - Free program.**
- 18 **Butterflies**
Jarrett Prairie Center - 7-8:30 PM. **Free program.**
- 25 **Lyme Disease**
Jarrett Prairie Center - Instructor - Mike Williams, Ogle County Health Department. **Free program.**
- 29 **Spring Flower Walk**
Jarrett Prairie Center - 9-10:30 AM. **Free program.**
- TBA **Astronomy Viewing - Free program.**

IT'S EASY BEING GREEN CLEAN UP YOUR ACT

When spring cleaning starts, most people reach into a cupboard for a toxic stew of house cleaning products. Most household cleaners promise to cut through dirt, grease, and grime, without mentioning the effect they have on groundwater, lakes, and rivers once they're washed down the drain.

This year, try mixing some of your own cleaning products. You may have to use more elbow grease to clean everything, but you'll have a toxin-free house.

Drains: to fix a slow drain, pour in boiling water, half a cup of baking soda, half a cup of white vinegar, and an eighth of a cup of salt.

Sinks and appliances: mix baking soda and vinegar. (Hint: use the baking soda from your refrigerator. This removes the top layer, revealing fresh baking soda to absorb more odors.)

Furniture: mix a quarter cup of vegetable oil with an eighth cup of lemon juice. Rub it onto furniture, and polish with a soft cloth. Use any leftovers on a salad.

All-purpose cleaner: to a pail with half gallon of water in it, add a half cup of each ammonia and vinegar, and a quarter cup baking soda. **DONOT ADD BLEACH TO AMMONIA!** This works well on floors, walls, counter tops, bathroom sinks, and appliances. Don't use it on copper or aluminum. You may want to open some windows for ventilation.

All of these cleaners are safe to wash down the drain, and you don't have to keep them locked up out of children's reach. You'll probably have to work a little harder when you use them. But isn't a clean environment worth a little scrubbing?

-Ryerson Almanac

DID YOU KNOW?

Every day, US Industries produce the equivalent of nearly 30 pounds of toxic waste for every man, woman, and child in the country.

The EPA has identified about 32,000 potential toxic waste sites in the US.

GOLF ... GOLF ... GOLF



Spring is not far away and PrairieView will soon begin its first full year of golf operations. Tentative opening day for golf is Wednesday, April 7, 1993, as the PrairieView staff predicts a very busy and rewarding season ahead.

The golf course will be open to walking golfers only, as weather conditions will dictate when carts are allowed. The driving range is also scheduled to open on April 7, 1993.

The PrairieView staff has been busily preparing for the new season during the last several months by implementing new programs, restructuring last season's golf fees, and acting on public input and suggestions among other activities.

All season golf pass fees are actually lower this season including many of the daily green fee rates! The new senior age requirement is now age 62. Junior golf fees are lower, in addition to a lower minimum age requirement and expanded playing opportunities. A new 10-play pass is also now available by popular request. Twilight golf fees, season golf cart passes, special senior weekday cart fees, and a new innovative twilight cart fee are all special new fees for this season.

Golfers will have a brand new scorecard with official Chicago District Golf Association yardage, course and slope ratings, and a new map of the realigned course. As previously announced, four holes on the original back nine (15, 16, 17, & 18) are now the new finishing holes on the front nine. The old 6, 7, 8, & 9 will now become the new finishing holes on the back nine.

A new clubhouse computerized cash register system with bar-coding will be functioning shortly for speedier and more accurate golfer registration and when fully operational will provide a wealth of golfer information.

On another front, Dennis Dunham and others are working diligently to form a "Golf Association at PrairieView (GAP)" to promote and organize future golf activities for men, women, senior, and junior groups. Information will be available at the clubhouse for anyone interested in this organization.

Opening day is only days away and the staff at PrairieView is eagerly anticipating the start of the new season.

We look forward to seeing you soon.

SEASON RESERVE TEE TIMES AVAILABLE

Request forms for 1993 PrairieView Golf Course season reserve tee times are now available and may be picked up at the PrairieView Golf Course clubhouse or at the Jarrett Prairie Center. Hours are: Monday - Friday, 9 AM - 3 PM.

Season reserve tee times are available to both residents and non-residents of the Byron Forest Preserve District. District residents who held a season reserve time last year will be given first consideration when requesting the same time for this season.

Completed request forms and payment must be returned in a sealed envelope marked - "Attention: Season Reserve Request".

Please note the new requirements for 1993. Season requests must be for the same tee time, on the same day of the week, and for a minimum of 16 dates. Requests are available to foursomes only and must be submitted on the district season reserve form, listing first, second, and third choice.

The new minimum fee for 1993 is \$36 per foursome which includes 16 tee times. Additional tee times are \$1 for each reserve date. All requests for PrairieView Golf Course season reserve tee times must be received no later than May 1, 1993.

GOLF LESSONS SCHEDULED

INSTRUCTOR - KEN LEDENE, PGA PROFESSIONAL

MAY

11, 13, 18,
20, 25

Beginner's Golf Clinic

PrairieView Golf Course - 6-7 PM. Objectives: Learn basic fundamentals of golf including grip, aim, set-up, full swing, putting, chipping, equipment, and terminology. Requirements: No previous experience necessary. Equipment needed: Tennis or golf shoes and golf clubs. (Practice balls will be provided.)

11, 13, 18,
20, 25

Advanced Beginner/Intermediate Golf Clinic

PrairieView Golf Course - 7:15-8:15 PM. Objectives: Learn basic pre-shot and in-swing fundamentals including grip, aim, set-up, full swing, putting, chipping, pitching, and individual error correction. Requirements: Minimum one season playing experience. Equipment needed: Tennis or golf shoes and golf clubs. (Practice balls will be provided.)

13, 20, 27
June 3

Beginner's Golf Clinic

PrairieView Golf Course - 10-11:15 AM. Objectives: Learn basic fundamentals of golf including grip, aim, set-up, full swing, putting, chipping, equipment, and terminology. Requirements: No previous experience necessary. Equipment needed: Tennis or golf shoes and golf clubs. (Practice balls will be provided.)

JUNE

1, 8,
15, 22

Beginner's Golf Clinic

PrairieView Golf Course - 6-7:15 PM. Objectives: Learn basic fundamentals of golf including grip, aim, set-up, full swing, putting, chipping, equipment, and terminology. Requirements: No previous experience necessary. Equipment needed: Tennis or golf shoes and golf clubs. (Practice balls will be provided.)

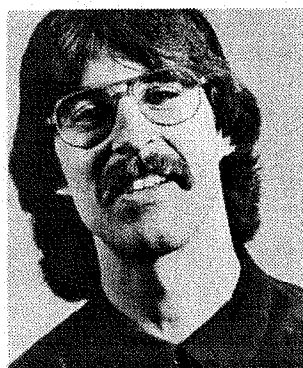
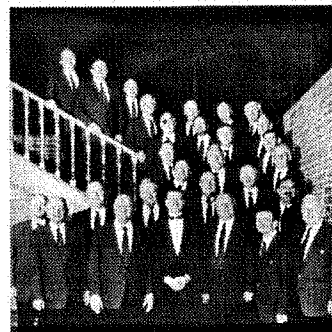
All clinics will be instructed by Mr. Ken Ledene, PGA Golf Professional and Clubhouse Manager at PrairieView Golf Course. The fee for each clinic is \$30 per person. The teaching procedures for group lessons will include basic or advanced instructions, demonstrations, practice, and contests. **The classes are limited to 6-10 participants.**

Please register by calling (815) 234-GOLF (4653).

MUSIC IN THE PARK

FEATURING . . .

SVEAS SONOR MEN'S CHOIR
SUNDAY, JUNE 6, 1993



HOWARD LEVY -
JAZZ HARMONICA
SUNDAY, JUNE 20, 1993

"Music in the Park" will be held at the Prairie Preserve located at 7993 N. River Road in Byron, IL. Times will be set later. This is a **FREE PROGRAM**. For further information, please call (815) 234-8535.

MORE PROGRAMS TO COME . . .

BYRON FOREST PRESERVE DISTRICT
7993 N RIVER RD
BYRON IL 61010

BULK RATE
U S POSTAGE PAID
BYRON IL 61010
PERMIT NO 50

POSTAL PATRON
BYRON IL 61010



Summer 1993

BYRON FOREST PRESERVE DISTRICT NEWS

Jack F. Philbrick, Director

PRESERVATION - EDUCATION - RECREATION

Michelle Lipps, Editor

WHERE WE ARE AND WHERE WE'RE GOING...

FROM THE DIRECTOR

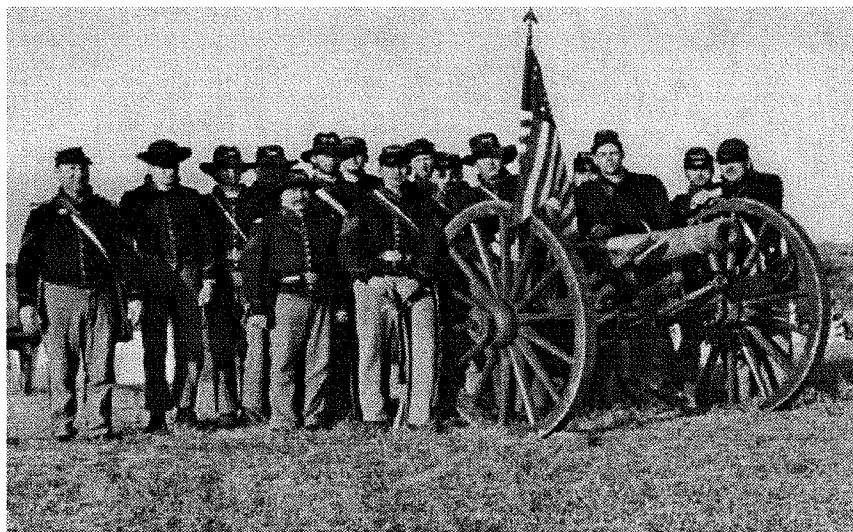
The staff and board welcome Mr. Gene Smith to the Byron Forest Preserve District Board of Commissioners. Mr. Smith will be offered the oath of office during the July 6, 1993, board meeting.

Senate Bill 91 has passed both Illinois Houses and should be law when this newsletter is released. The law will establish the election of commissioners to start with the April 1995 election. Until that date, all upcoming vacancies will continue to be Ogle County Board appointments.

The present goal of the board is to concentrate on reviewing the results of the district-wide needs assessment that was conducted on June 21, 1993. All final results will be presented to the public and the board of commissioners simultaneously.

With regional interest in the district increasing, the board anticipates more and more inquiries as to how the rest of Ogle County can become a part of the district. Individuals that wish this information should contact the district administrative office at (815) 234-8535.

BATTERY G CIVIL WAR CAMP



Take a step back in time to the 1860's. The Byron Forest Preserve District will be hosting a Battery G Civil War Camp Reenactment on the weekend of July 17-18.

The schedule of events is as follows:

Saturday, July 17		Sunday, July 18	
10am-Dark	Tours	10am-4pm	Tours
1 & 2pm	Cannon shooting	Noon &	
3pm	Battle	1pm	Cannon shooting
Night	Private candle light tours and sing-a-longs for select groups	2pm	Battle
		4pm	Break camp

This will be held at the Byron Forest Preserve District, 7993 North River Road in Byron, Illinois. For more information, call (815) 234-8535.

ATTENTION CRAFTERS!!

There are still booths available for anyone wishing to participate in our Christmas Craft Show '93, which is scheduled for Saturday, December 4. Please call Cathie Francis at 234-8535 ext. 203 for more information.

LOOK WHAT'S INSIDE...

GIFT SHOP ITEMS

PRE-SCHOOL PROGRAMS

CLUBHOUSE NOTES

PROGRAMS SCHEDULED



NEW FACES AT THE JARRETT PRAIRIE CENTER

Betty Fetzner (left) and Chris Cox (right) are the two newest employees at the Byron Forest Preserve District.

Betty is Deputy Director Bowman's assistant. She is employed at the preserve through the GreenThumb Organization.

Chris is the new gift shop clerk and receptionist. She also coordinates the facility rentals and program scheduling.



NEW GIFT SHOP ITEMS

There are several new items available in the Jarrett Prairie Center Gift Shop.

Harmonicas, stuffed raccoons with logo shirts, rocks and minerals, and books are just a few of the new items.

The Hohner American Ace Harmonicas come with a case and instructions on how to play - \$4.95 each plus tax. The adorable 7" stuffed raccoon wearing a Jarrett Prairie Center logo shirt - \$6.50 each plus tax. There are more varieties of the Triazze puzzles available - lizards, frogs, planets, flowers, fish, turtles, and wild animals. The ever-popular bugs and butterflies is also still available. The puzzles sell for \$7.50 each and the Master Editions are \$8.50 each. The gift shop has a wide assortment of rocks and minerals from Fool's Gold to Amethyst to Fossil Fish. The rocks and minerals come with a brief description tag and range in prices from \$.95 to \$12.50. Ready-to-hang, 16x20" pictures are sold for \$3.50 each plus tax. The beautiful pictures vary - country scenes, space shuttles, old mills, different animals and birds. New books about wildflowers, birds, and beekeeping are available. Illinois specialty books - Illinois Roadkill Cookbook, Mississippi Po' Folk, and How To Talk Midwestern are just a few. Albert G. Spalding coins are available for \$5 each. Albert G. Spalding is the Father of Baseball and was born in Byron.. Prairie Rockers are still on sale at the gift shop.

DON'T MISS OUT.....COME CHECK US OUT..... 8:30AM-4:30PM, Monday-Saturday, and 1-4:30PM on Sunday.

Gates Rubber Company Conference Held at JPC

The Gates Rubber Company of Rockford held their annual safety conference at the Jarrett Prairie Center in May. The four-day conference was catered by District Caterer Karla Coy. Over 350 people from all over the United States and a few different countries attended the conference. The event produced over \$2,000 in revenue for the district.

To make reservations for your conference, business meeting, or banquet, please call (815) 234-8535.



Dutchman's Breeches

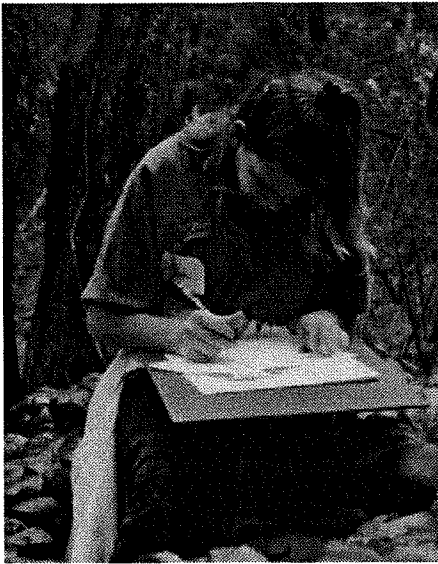
PRAIRIE WONDERS ... For Your Special Enjoyment!!

By Bob Facklam

Shooting Stars, Prairie Smoke, Creamy False Indigo, and colorful Pasque Flowers are just a few of the early prairie flowers that you can enjoy for a relaxing stroll through the prairie at the Byron Forest Preserve.

There is an excitement about learning and appreciating this unique natural environment. New seasons bring fascinating changes in the prairie landscape.

The wonders of the prairie have a very special way of capturing your emotions. Come enjoy the prairie at the Byron Forest Preserve.



KIDS, NATURE, and CREATIVITY

*By Bob Facklam,
Photography Teacher*

Fun and excitement along with frustration, patience, and concentration are just a few of the feelings and experiences kids have in meeting the challenge of sketching (above) and photographing nature. The need to develop a careful eye for detail and composition helps one to better see and appreciate the beauty and wonders of nature. These activities develop creativity, and a great sense of accomplishment.

SUMMER PRESCHOOL NATURE PROGRAMS

The Byron Forest Preserve will conduct a series of summer nature programs for preschool children at the Jarrett Prairie Center. Mrs. Nancy Blank will be teaching the classes. Nancy has a Bachelor of Science Degree in Early Childhood Education.

Classes are scheduled as follows:

July 6, 13, 20, 27 - 9:30-10:30 AM - 3-4 year olds
 July 6, 13, 20, 27 - 1:30-2:30 PM - 4-5 year olds
 July 7, 14, 21, 28 - 9:30-10:30 AM - 4-5 year olds
 August 3, 10, 17, 24 - 9:30-10:30 AM - 3-4 year olds
 August 3, 10, 17, 24 - 1:30-2:30 PM - 4-5 year olds
 August 4, 11, 18, 25 - 9:30-10:30 AM - 4-5 year olds

During the July classes, children will learn about stars, rocks, fish, and owls. The cost for these four classes is \$10.

During the August classes, children will learn about animal homes on the prairie, snakes, Indians, and buffaloes. The cost for these classes is \$10.

Parents may relax during the programs in one of the Jarrett Prairie Center Conference rooms. Coffee will be available. Nature walks are available on request.

All classes are limited to a maximum of 10 children so you must call to register. Please call (815) 234-8535.



EASTER EGG HUNT - BIG SUCCESS!!



The Byron Lion's Club hosted over 400 people at their annual Easter Egg Hunt held at the Prairie Preserve on April 10, 1993.



Golf Superintendent Steve Storz pictured here on a Jacobsen HR5111 articulating rotary mower.

TURF EQUIPMENT SHOW

By Steve Storz, Golf Supt.

On May 19, 1993, Wisconsin Turf Equipment Corporation in cooperation with the Byron Forest Preserve District held a turf equipment show and demonstration at our own PrairieView Golf Course. Approximately 45 golf course and landscape supervisors from Northern Illinois and Southern Wisconsin attended.

Turf Specialist, Mark Grundman, kicked off the day at the Jarrett Prairie Center with a slide show highlighting some of the newest grass varieties. The show continued at the clubhouse where manufacturer representatives began putting state-of-the-art machines through their paces out on the golf course. We saw aerators, topdressers, topdressing brushes, riding and walking greensmowers, midweight fairway mowers, sprayers, power sweepers, gang rotary mowers for cutting the roughs and a sensational new self-leveling rotary for mowing steep banks.

After the demonstrations, representatives answered questions. Then the attendees were given the opportunity to operate any equipment they wanted to try. I was most interested in the gang rotaries for mowing roughs. A wet spring, like we have had this year, makes keeping up with the rough especially difficult. Until recently, the width of rotary mowers used on golf courses was limited to 6-7 feet, because the broader decks tended to scalp uneven terrain. The most recent designs employ combinations of 3-, 4-, and 5-foot articulating decks which mow up to 15 feet yet actually scalp less than the old one-piece units.

When all participants had run the equipment to their satisfaction, the clubhouse staff served a burger and brat lunch paid for by Wisconsin Turf. Door prizes were passed out after lunch and the attendees returned to their respective places of business.

SUCCESS IN '93

PrairieView's success has grown considerably since last season.

From April 7, 1993, through May 30, 1993, 4,462 rounds have been played at PrairieView.

Over 30 playdays have been scheduled so far this year. Only 32 playdays were held during all of last season.

League rounds for 1992 were 448. Anticipated rounds for 1993 is 2,240.

Season pass sales have jumped incredibly. Last season, only 32 passes were sold. This season, 111 passes have been sold.

Revenue for this year is already over \$105,000. This includes greens fees, concessions, pro shop sales, league and playday fees, and season passes.

As you can see, PrairieView has done very well compared to last season.

CLUBHOUSE NOTES...

By Ken Ledene, Clubhouse Mgr.

Second Annual Gold Medal Golf Tournament

Mark your calendars now and make plans to enter the Second Annual Gold Medal Golf Tournament hosted by PrairieView Golf Course. This year's dates are Saturday and Sunday, September 11 and 12, 1993, with two 18-hole stroke play rounds each day.

The initial event held last September was a huge success. A dramatic increase in entries is expected with the continued maturity of the course and number of new season pass holders. Entry forms will be available in the next few weeks.

Play Increases At PrairieView

Please call the PrairieView Clubhouse at (815) 234-GOLF for current updates on tournaments, outings, and special events at the course. Playday lists are posted and available at the clubhouse on a regular basis.

Despite the rainy, cool beginning to the season, average play on all days this year is up considerably from last season. It is always recommended to call ahead during busy times and make a reserved tee time. Reserve fees are only \$1 per foursome.

New Twilight Golf Rates

Quick reminder to area golfers!!

Remember to take advantage of the new twilight golf rates this season. Resident discount cardholders pay only \$6 green fees at 5:30 PM, as many holes as you care to play, available seven days a week. Ride a cart at the same time for just \$8 for two, again as many holes as you care to play starting at 5:30 PM.

Regular twilight fee rates are also available to non-cardholders including an early twilight starting at 4 PM every day.

PRAIRIEVIEW HOSTS JUNIOR GOLF TOURNAMENT

The annual Elks Northwest District Junior Golf Tournament was held in Byron at the Prairie View Golf Course on Monday, June 14, 1993. On a sunny yet windy day, 32 boys and girls participated in the event.

The winner of the 17-18 year old boys was Jason Beyer of Rockford with a 40-41-81. Second place went to Ian McDonald of Oregon. Both the winner and runner-up commented that the windy conditions effected both their drives and putting.

Winning the 14-16 year old boys group was Nick Boss of Dixon with a 43-45-88, and the girls winner was Christie Hermes also from Dixon.

Tieing for first in the 11-13 year old 9-hole division was Brad Anderson of Mt. Morris and Greg Marinelli of Byron. Both boys shot a 49 in sharing the honor.

In the 8-10 year old boys 9-hole division, Mike Lange of Byron lead the pack with a score of 49. Beth Hermes of Dixon took first in the girls division with a score of 71.

TRAFFIC COUNTER RESULTS

On January 1, 1993, a traffic/road counter was installed and activated at the main entrance to the Byron Forest Preserve. It is set to advance once for each vehicle that both enters and exits the preserve. Since the golf course entrance is separate, on German Church Road, no golf traffic is recorded on this counter.

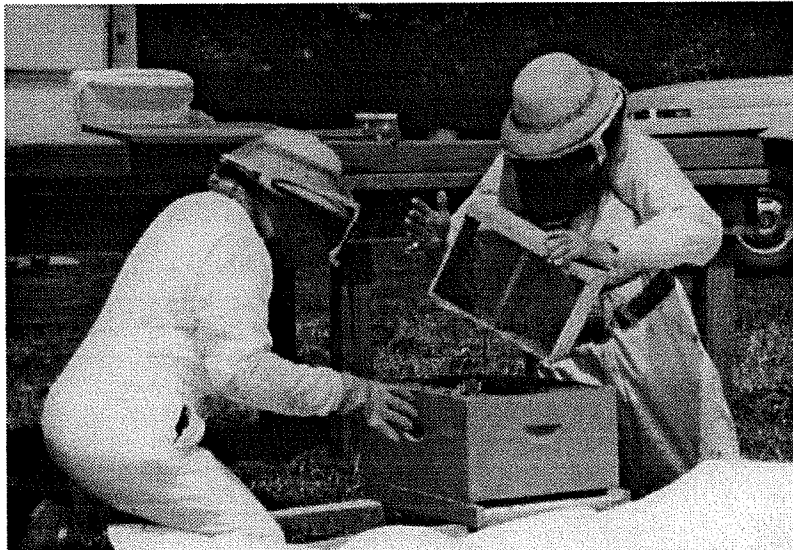
As of May 31, 25,074 was the reading on the counter. For an estimate of the number of people coming into the preserve, we took 25,074 minus 5,150 for employee crossings then multiplied 19,924 by 2.4 persons per vehicle which equals 47,818.

Buzz, Bees, Buzzzz!!

The Jarrett Prairie Center welcomed thousands of bees for an observation hive in the museum. The entire hive is under glass so you can actually see the bees busily working. The bees have already started producing honey.

Pictured right are Brian Steffa, district employee, and John Zaleskas, bee specialist, preparing some of the bees for the outdoor observation hive located west of the maintenance buildings in the Prairie Preserve.

This is one exhibit that you can't miss! It is just amazing to see these small creatures at work.



Facility Rentals On The Rise

The facility rentals at the Byron Forest Preserve are on the rise.

Through facility rentals alone, the Byron Forest Preserve has welcomed over 4,500 visitors.

The Byron Forest Preserve District offers banquet facilities located in the Jarrett Prairie Center. The scenic Prairie View Room can be used for wedding receptions, family reunions, birthday parties, conferences, meetings, etc. The Prairie View Room will accommodate approximately 100 people for a banquet-type setup.

The Blazingstar Room and the Indigo Room are located downstairs. These rooms will accommodate approximately 100 people each but they can be combined as one large room for special needs of larger groups.

Also available are picnic shelters. The North Shelter has a playground. The South Shelter is partially enclosed and has a fireplace. Both shelters have grills, electricity, water, and handicap-accessible restrooms. Each shelter will accommodate approximately 50 people.

Food service is easily arranged through the district's caterer or local caterers.

The costs for these facilities are very reasonable. Please call the Jarrett Prairie Center at (815) 234-8535 for more information or to reserve a room or shelter. The hours of the office are 8:30AM-4:30PM, Monday through Friday.

**FOR RESERVATIONS
OR INFORMATION -
CALL (815) 234-8535**

OBSERVATORY OPEN!!

The J. Weiskopf Observatory opened June 9, 1993.

Jupiter and its four moons were in plain view. Deputy Director Mickey Bowman was on-hand to elaborate on the planet's similarities to our planet Earth.

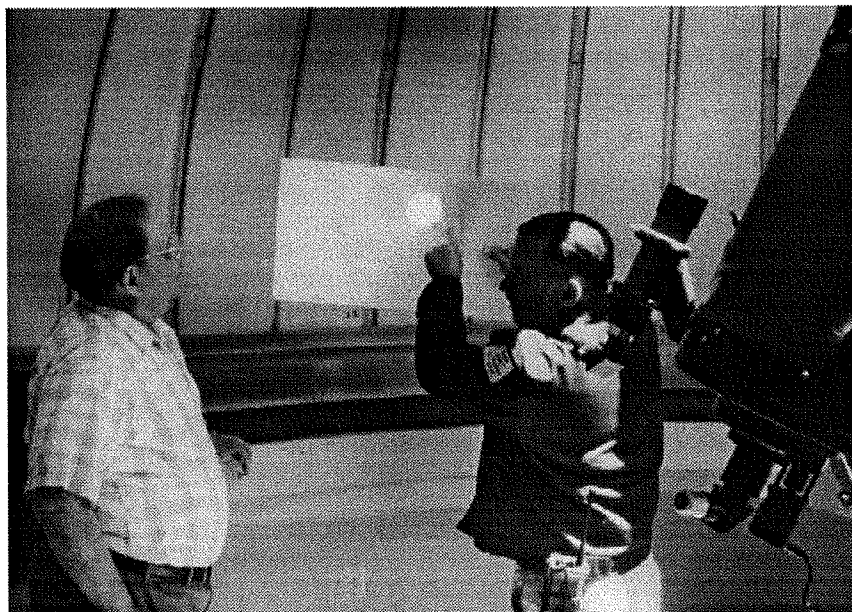
A special, private dedication will be held for recognition of Dr. Weiskopf.

The observatory will be open to the public every Tuesday night at 8:30 PM for sky viewing. Rain/cloud dates will be Thursday nights. There is no charge for these programs.

"Sky Calendars" are available at the Jarrett Prairie Center Gift Shop for \$.50.

Please call to register for the Sky Viewing at (815) 234-8535.

Private groups and/or organizations may make special arrangements by calling (815) 234-8535 ext. 202.



Deputy Director Mickey Bowman shows Board President Jarrett the sun spots shown through the telescope in the Weiskopf Observatory.

PRAIRIE WALKS SCHEDULED

Prairie Walks have been scheduled for every Saturday morning through October from 9-10:30AM. Everyone must register by calling (815) 234-8535.

SCRAPBOOK CLASS SCHEDULED

A "Creative Memories" Scrapbook Class has been scheduled for July 17, 1993, at the Jarrett Prairie Center from 9 AM to 2:30 PM. The instructor will be Linda Nichols. To register, please call her at (815) 648-2524.

The fee for this class is \$10 and is payable at the beginning of the class.



Kathy Cowan (above) is a Chicago-based folksinger. Kathy's specialty is traditional Irish music and her repertoire covers the spectrum of that rich heritage--from the haunting melodies of the ancient ballads, to the lilting, humorous parlor songs--Kathy's performance evokes the full magic of the Emerald Isle.

Kathy will be appearing at the Prairie Preserve Stage on Sunday, August 15, 1993.

ATTENTION

BYRON FOREST PRESERVE
DISTRICT RESIDENTS

PLEASE DON'T FORGET TO COMPLETE AND MAIL YOUR NEEDS ASSESSMENT SURVEY IN THE SELF-ADDRESSED, STAMPED ENVELOPE.

THE SURVEY GIVES YOU THE CHANCE TO CONFIDENTIALLY VOICE YOUR OPINION.

THANK YOU FOR YOUR
ANTICIPATED COOPERATION.



Fall 1993

BYRON FOREST PRESERVE DISTRICT NEWS

Jack F. Philbrick, Director

PRESERVATION - EDUCATION - RECREATION

Michelle Lipps, Editor

MARK YOUR CALENDARS...

2ND ANNUAL CHRISTMAS CRAFT SHOW

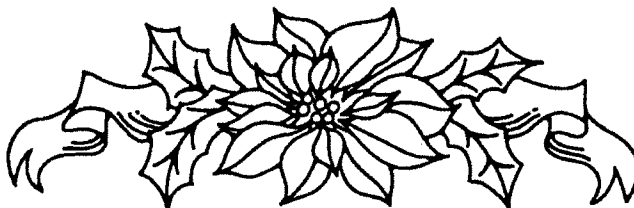
JARRETT PRAIRIE CENTER
7993 N RIVER ROAD
BYRON

SATURDAY, DECEMBER 4
10 AM - 6 PM

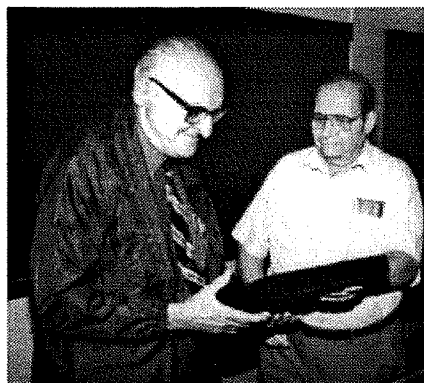
Over 45 local crafters
Wide variety of unique crafts
Cub Scout Pack 147 Bake Sale
Lunch available & served by our own Senior Volunteers

DON'T MISS OUT ON THIS ONE...

SHOP EARLY!! BRING A FRIEND!!



VOLUNTEERS IMPORTANT TO DISTRICT...



Board President R. M. Jarrett presents the Senior Volunteer of the Year award to Mr. William Post of Stillman Valley.

Thanks to all the volunteers who support our prairie restoration efforts, help in the Jarrett Prairie Center Gift Shop, and assist in the Museum and the Weiskopf Observatory.

Volunteers have put in over 200 hours working on the prairie - pulling "alien" plant life, collecting native prairie seeds, and cutting woody plant material (brush). Another 300+ hours of volunteer hours have been contributed in the Jarrett Prairie Center - helping in the gift shop and reception area on weekends, and processing the prairie seeds in preparation for storage and planting.

Help is needed to maintain bluebird houses and cut brushy material from the prairie. Assistance is also needed for a class on making squirrel feeders.

If you would like to be a part of this group that is helping restore the prairie and provide experiences for visitors, please call Betty at 234-8535, Ext. 222.

.....

WANTED: STAR GAZERS!

A group of about 20 Byron area residents have been regularly attending the observing sessions at the Weiskopf Observatory. Interest in forming an astronomy club has resulted in two initial planning meetings. Several items were addressed at a meeting held on November 3, 1993.

A tentative schedule of programs and field trips was proposed for 1994. Details will follow including confirmation of dates and presenters.

Regular meetings will be held on the first Thursday of each month at 7 PM at the Weiskopf Observatory located at 7993 North River Road in Byron. The next meeting is scheduled for Thursday, December 2.

Steve Toothman volunteered to be the coordinator for the club during its organizational phase.

The telescope is being updated with the addition of an electronic device that was donated by Dr. Weiskopf. This device accurately tells where the telescope is pointed and assists in locating some of the faint sky objects.

People continue to add to the astronomy library at the observatory. Nearly 100 books are now cataloged and are available for reference. Back issues of four astronomy magazines have been added. The observatory reference library is becoming an excellent resource for the novice astronomer as well as the more advanced astronomer.

Call 234-8535 for more information on the club. Membership is open to any

WHAT'S UP!?



This month, we have been looking at Saturn. It is in the upper left part of the constellation - Capricornus. People who have been coming to the observatory have been very fascinated with looking at this planet. Especially those seeing it for the first time.

A spectacular sight is the Double Star Cluster between Perseus and Cassiopeia. Not only can you see the Double Star Cluster through the telescope, but it can be seen fairly well with binoculars.

Another cluster that can be seen through binoculars is the Pleiades. These can also be seen with the naked eye.

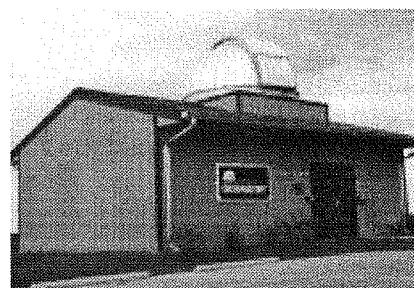
The Great Andromeda Galaxy has been a favorite with everyone. It is the closest galaxy to our own and it can also be seen with binoculars and the naked eye. It is located off the Great Square of Pegasus and is 2.2 million light years distant.

There are many clubs and organizations visiting. Some of these groups are the Byron School's Astronomy Clubs, Focus House, and Boy/Girl Scouts.

Regular viewing sessions are held every Tuesday evening at dusk.

We urge everyone to come take a peek at what's up.

Jeff Bolen
Amateur Astronomer





TREES MAKE PRAIRIEVIEW SAFER

PrairieView Golf Course has seen a dramatic change in the character on holes #1, 2, 3, and 4 with the recent planting of over twenty mature scotch, white pine, and blue spruce fir trees!

Golfer safety was originally the primary concern on each of these previously wide-open holes. Fortunately for the district and the golfers, several dozen of these massive trees became available from a local nursery for transplanting at a bargain price. Not only will golfers feel safer on tee #4, but holes #2 and 3 will become truer dogleg holes. The newly planted trees will "encourage" golfers to stay more in their own fairway as well as adding tremendous aesthetic appeal, hole definition, summer shade, and much needed wind break at times. An additional 30 Bald Cypress will be planted this month by the district's staff.

Hopefully, the opportunity to continue to add more trees this size will be available next spring. Meantime, our Park Maintenance Department staff continues to move smaller stock from our own nurseries by the dozens. Look for other holes, such as #9, to possibly be dramatically altered with future tree plantings.

Thanks to BJ Tree Nursery in Byron for making this improvement possible!

THANK YOU GOLFERS...

As our first full year comes to an end, the PrairieView clubhouse staff, including myself, would like to thank everyone for all of their terrific support this season.

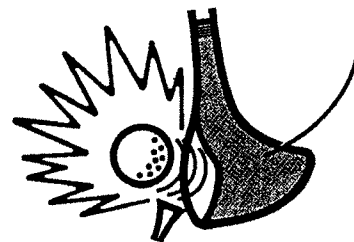
The golf course is rapidly maturing, the greens are improving daily, the rough is filling in, and more trees are being planted.

Over 24,000 rounds of golf have been played at PrairieView this season, compared to 14,230 for last year.

Gross revenue for the course is also ahead of earlier predictions. Season pass sales totaled 127 passes in 1993, well above the 33 season passes sold in 1992.

The future looks bright for PrairieView, and we look forward to welcoming you back in 1994.

*- Ken Ledene
Clubhouse Mgr.*



BHS Students Visit PrairieView

PrairieView welcomed the Byron High School Physical Education classes again this year. In early October, four classes per day, ranging in size from 15-30 students, used the facilities for eight scheduled days of golf instruction.

PrairieView looks forward to the day when it can also be the home for the Byron Tigers Golf Team.

Forty-three individual resident junior season passes were sold this past season, as more area youth are taking up "the game of a lifetime".



Byron High School Physical Education Students practicing on the driving range at PrairieView.

PRAIRIEVIEW CONVICTED!!

By Steve Storz, Golf Supt.

The gavel resounded! The courtroom grew silent. Within minutes, the fate of the defendant, PrairieView Golf Course, would be revealed.

"You stand accused of being a golf course," proclaimed the judge. "In light of the overwhelming evidence, I pronounce you guilty! I, therefore, sentence you to serve the golfers of this area for the rest of your natural life!"

The district attorney arose and pointed his finger at PrairieView. "Persistent rumors continue to surface that you are more than a mere golf course. You may be the finest golf course in this region! As soon as my office has sufficient evidence to prove these allegations, I intend to prosecute you to the full extent of the law. We'll see you in court!"

In what seems like overnight, PrairieView has changed from a cow pasture to a golf course. Although we still have not "arrived", much has been accomplished this year. Looking forward, I would like to share with you a few goals that PrairieView's Golf Maintenance Department has set for the 1994 season.

GREENS - Smoother, more consistent shot holding ability - accomplish this by aeration, regular topdressing, and more frequent repair of ball marks. 6 & 11 - put on turf covers this fall to extend their growing season, clear out more trees and undergrowth this winter to provide more sunlight and air drainage.

TEES - Intensify soil and seed application in divots, hopefully provide soil and seed buckets plus broken tee receptacles so that golfers can help rotate tee markers more consistently.

FAIRWAYS - This fall, sod remaining washes and bare areas, next spring, begin soil and seed in tee divots.

BUNKERS - Install drains in areas that retain water, add sand, remove stones, edge more frequently.

ROUGHES - This winter, complete cleanup of wooded areas, next spring, work on seeding wooded areas, continue fixing and seeding all rough areas, plant more trees, extend cart paths, begin implementing Audubon Sanctuary Certification Program - this includes planting out-of-play rough areas to prairie and bird-friendly plants, building and installing bird houses, etc.

Most of the projects mentioned above will require capital improvement funds. It appears that very little money will be available in that area for 1994. PrairieView's rapid development has required and will require the solid support of the board of commissioners and the residents of this district if it is going to continue at its present rate.

Let's provide enough evidence next year to convict PrairieView of being the finest golf course in this region.

Annual Gold Medal Classic

Mr. Lloyd McWilliams of Cherry Valley prevailed in the Second Annual Gold Medal Golf Tournament at PrairieView with a 36-hole score of 147.

McWilliams received a \$475 gift certificate to the American Club/Blackwolf Run Golf Course Resort in Kohler, Wisconsin.



Clubhouse Manager Ken Ledene presents a \$475 gift certificate to winner, Lloyd McWilliams of Cherry Valley.

CLUBHOUSE NOTES...

SEASON PASS SAVINGS!

The perfect Christmas gift for the golfer in the family this year is a new, 1994 PrairieView Season Golf Pass!

The good news is that you can purchase your 1994 season pass gift at the 1993 season pass rates. The deadline to make your gift purchase at the guaranteed 1993 rates is 12 noon on Thursday, December 23, 1993. Call (815) 234-GOLF for information and fees.

- - - -

You Wanted To Know...

In response to golfers' inquiries, PrairieView Golf Course hosted 64 playdays this past season. A "playday" is considered by our staff to be any pre-registered group of 20 or more golfers. The following is a brief summary of 1993 playday activity:

23 Weekday Playdays
41 Weekend Playdays

• •

Playdays by size -

of Golfers / # of Playdays
20-39 / 43 Total
40-59 / 7 Total
60-89 / 9 Total
90+ / 5 Total

• •

Playdays by month -

May	6
June	14
July	10
August	12
September	18
October	4

TOTAL 64 Playdays in 1993

The golf course hosted over 24,000 rounds of golf and grossed over \$460,000 in its first full year of operation.

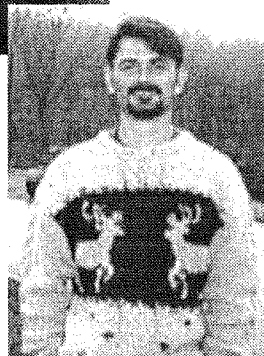
NEW FACES AT JPC

Tim Northern and Matt Kirchman have joined the Byron Forest Preserve District as part time staff. Both are at Northern Illinois University's Lorado Taft Field Campus.

Matt (lower right) is a teaching assistant at Taft. He has a bachelor's degree in visual communication and a master's degree from Taft in Outdoor Education. His passion is creating interpretive displays. You will begin to see the results of his efforts in future exhibits that are in preparation.

Tim (upper left) is a graduate student at Taft. He has a bachelor's degree and is working on a master's in Outdoor Education.

Matt and Tim oversee the Jarrett Prairie Center on weekends, and are available for special programs for school groups, scout groups, etc.



Join The Club...

On Saturday, September 18, the Byron Forest Preserve, the Byron Chamber of Commerce, and the Illinois Volkssport Association (IVA) co-sponsored a "Volksmarch" event. While 26% of the participants were from Byron, 53 people from 23 different cities walked the 6.2 mile/10 kilometer trail.

The event began at the Jarrett Prairie Center. After winding through the prairie, walkers followed a route through some of Byron's interesting locations and returned via the bike path to the Jarrett Center.

As a follow up to this event, the Forest Preserve and the Chamber are joining forces to assist in the formation of a local Volkssport Club.

A Volkssport Winter Walk will be held on December 4, 1993, from 1-3pm beginning at the Jarrett Prairie Center. Following the walk, a Volkssport Meeting will be held from 3-4pm. If you plan to attend, please call 234-8535.

Three events are being suggested for 1994. A spring event is tentatively scheduled for Sunday, May 15. A second event will be scheduled during Byron Fest, July 8, 9, or 10. A third event is to be held in late September along with a Fall Prairie Heritage Festival.

If you are interested in being a part of this group, please call 234-8535.

Nature Preschool Classes Scheduled

The Byron Forest Preserve has continued its nature preschool program into the fall. The classes are taught by Nancy Blank, our Early Childhood Education specialist.

Four- and five-year-old classes are taught on Tuesdays from 9:30 to 10:30 AM and from 1:30 to 2:30 PM. Three- and four-year-old classes are taught from 9:30 to 10:30 AM on Wednesdays and Thursdays.

Class themes for December will be white tailed deer on Dec. 7th and 8th and evergreen trees on Dec. 14th and 15th.

Classes are limited to ten children for the four- and five-year-old group and six children for the three- and four-year-old group. The cost is \$2.50 per class and paid on a monthly basis. Registration is also done on a monthly basis.

During these exciting programs, parents may relax in one of the Jarrett Prairie Center conference rooms where coffee will be available.

For more information or to register, call 234-8535.

CHRISTMAS PARTIES...

The Byron Forest Preserve District is now accepting reservations for Christmas Parties at the Jarrett Prairie Center. Please call Chris for more information on available dates and special services at (815) 234-8535, Monday - Friday.



Nature Preschool Class discovering.

**DO YOU KNOW
ANYONE??**

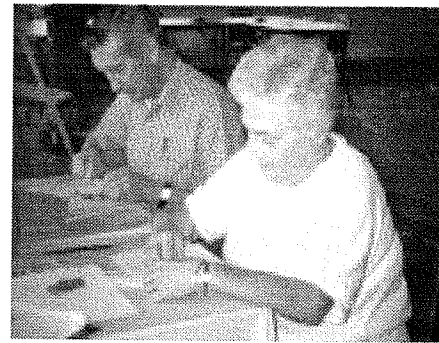


Anderson-Clare wedding on the prairie.

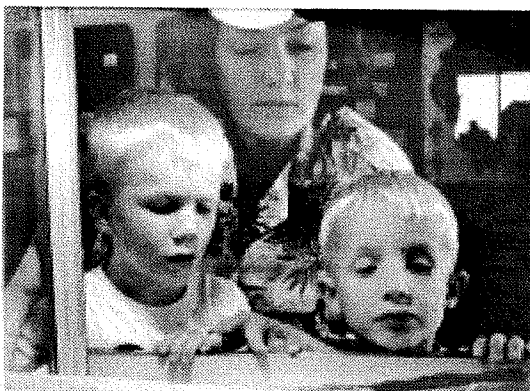
**COME
JOIN THE FUN...**



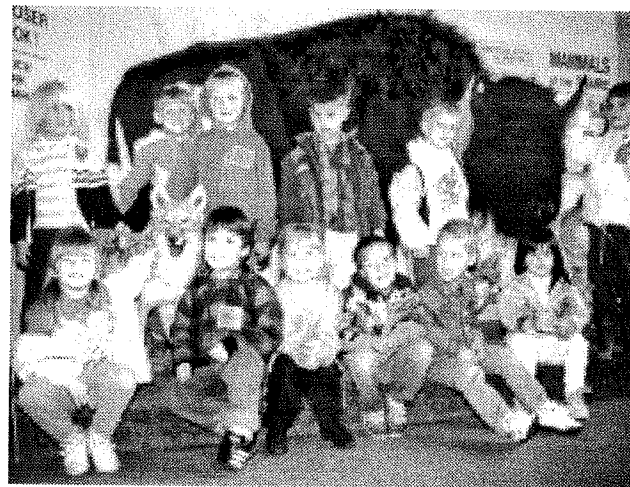
Home School group collect seeds for re-planting.



John and Dorothy Counsell separate seeds.



Nature Preschool students check out the Professor.



Byron Outdoor Education Class visits the Jarrett Prairie Center.

The Jarrett Prairie Center is always hoppin' with activity. From visiting school groups to seed pickers and sorters to weddings. Come see what's happenin' at the Byron Forest Preserve. You can find us at 7993 North River Road in Byron.

FROM THE NATURALIST...

Some members of the public recently questioned some of the management activities on Forest Preserve property. The staff naturalist would like to explain why we do some of these activities.

For example, a recent letter to the editor in the Tempo (Sept. 28) stated that we allowed bull thistles to go to seed on the prairie. We also have two other species of thistle on the prairie, the oldfield thistle and Hills thistle (a threatened species).

The oldfield thistle resembles the bull thistle. There may be an occasional bull thistle in our old fields and restored prairie, but these do not invade the better quality prairie and will eventually be outcompeted by the prairie plants if the soil is not disturbed. Bull thistles require occasional soil disturbance such as plowing, grading, or severe grazing to become well established in an area. Prairie burns (pictured above) also help to decrease the presence of bull thistles.

Bull thistles pose far less of a threat to our natural areas than sweet clover, exotic scrub brush such as honeysuckle, multiflora rose, buckthorn, sumac, spotted knapweed, and garlic mustard. Therefore, we have to concentrate on removing these threatening species before we tackle any bull thistle.

Another management practice we do at the forest preserve is prescribed burning. This was questioned in the September 28 letter where the writers believe we have destroyed nesting habitat for pheasant, quail, red-winged blackbirds, and meadow larks.

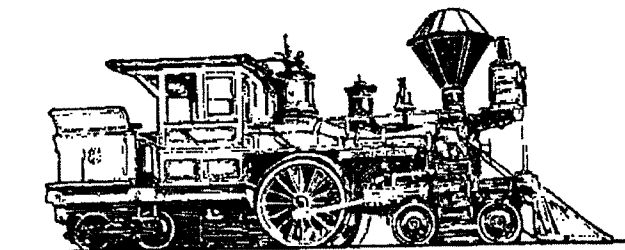
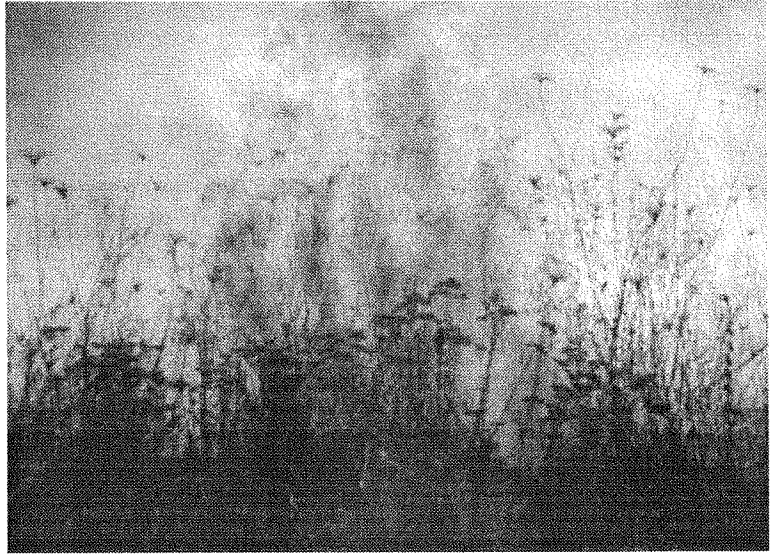
Red-winged blackbirds are a lowland species and are unlikely to nest on a hilltop far from water. While one may see red-winged blackbirds passing through an area, nesting on high ground is extremely unlikely, regardless of any burning.

Pheasants, meadow larks, and quail do not begin to set up nests until later in April in Northern Illinois - we burned the first week in April. Quail and pheasant will set up nests when the vegetation is 6-12 inches in height. Grass and other plants regenerate quickly following a burn and often reach 6-12 inches within 2-3 weeks, which coincides with peak nesting if an area is burned in late March or early April.

The Illinois Department of Conservation recommends burning in early spring (March 1 to April 10) on areas managed for breeding grassland bird habitat. This includes all of the species listed in the September 28 letter. Grassland bird species evolved over thousands of years to cope with habitat which burned in fall or early spring. It is unlikely that the life cycles of these birds are any different now.

Our burns are conducted because they enhance growth of native warm season prairie plants, destroy exotic weeds and their seeds (including the non-native thistles), and are cheaper and less harmful to the environment than herbicide, mowing, or plowing.

Josh Skolnick
Naturalist



NEW EXHIBIT COMING SOON...

The Jarrett Prairie Center will be receiving a long awaited major exhibit soon.

The exhibit, a historical rendition of early Byron and its railroads, has been under construction for over a year and will depict much of what was built in Byron at the turn of the century.

CALENDAR OF EVENTS

DECEMBER

- 1 Senior Exercise Class - 11am-Noon - Jarrett Prairie Center
- 2 Amateur Astronomers Meeting - 7pm - Weiskopf Observatory
- 3 Saturday Prairie Walk - 9-10:30am - Begins at Jarrett Prairie Center
- 4 Volkssport Winter Walk - 1-3pm - Begins at Jarrett Prairie Center
- 4 Volkssport Meeting - 3-4pm - Jarrett Prairie Center
- 4 Christmas Craft Show - 10am-6pm - Jarrett Prairie Center
- 6 Senior Exercise Class - 11am-Noon - Jarrett Prairie Center
- 7 Senior Volunteers Sort Seeds - 8:30-11:30am - Jarrett Prairie Center
- 7 Skyviewing - 7pm-? - Weiskopf Observatory
- 7 Nature Preschool - 9:30-10:30am and 1:30-2:30pm - Jarrett Prairie Center
- 8 Nature Preschool - 9:30-10:30am - Jarrett Prairie Center
- 8 Senior Exercise Class - 11am-Noon - Jarrett Prairie Center
- 10 Saturday Prairie Walk - 9-10:30am - Begins at Jarrett Prairie Center
- 11 Ice Fishing Seminar - 9:30am - Fee-\$1 - Jarrett Prairie Center
- 14 Senior Volunteers Sort Seeds - 8:30-11:30am - Jarrett Prairie Center
- 14 Skyviewing - 7pm-? - Weiskopf Observatory
- 14 Nature Preschool - 9:30-10:30am and 1:30-2:30pm - Jarrett Prairie Center
- 15 Nature Preschool - 9:30-10:30am - Jarrett Prairie Center
- 17 Saturday Prairie Walk - 9-10:30am - Begins at Jarrett Prairie Center
- 18 Ranger Rick to Natural History Museum in Chicago - 8:30am-4:30pm
- 21 Skyviewing - 7pm-? - Weiskopf Observatory
- 21 Senior Volunteers Sort Seeds - 8:30-11:30am - Jarrett Prairie Center
- 25 CLOSED - Christmas Day
- 28 Skyviewing - 7pm-? - Weiskopf Observatory
- 28 Senior Volunteers Sort Seeds - 8:30-11:30am - Jarrett Prairie Center

Christmas Lights will be on throughout the Prairie Preserve after December 1, 1993.
Facilities will be **CLOSED** on **Christmas Day** and **New Year's Day**.

SIGN UP NOW!!
234-8535

Jarrett Prairie Center Hours -
Monday-Saturday - 8:30AM-4:30PM
Sunday - 1-4:30PM.
Prairie Preserve - Dawn to Dusk.

BYRON FOREST PRESERVE DISTRICT
7993 N RIVER RD
BYRON IL 61010

BULK RATE
U S POSTAGE PAID
BYRON IL 61010
PERMIT NO 50

POSTAL PATRON
BYRON IL 61010