



SPRING 1992

# BYRON FOREST PRESERVE DISTRICT NEWS

## RANGER RICK NEWS

The Ranger Rick Club went to Milwaukee to visit "Discovery World" and the Milwaukee Public Museum for their January meeting. It seemed to be a toss-up as to which place was their favorite, but the "Tropical Rainforest" exhibit at the Milwaukee Public Museum was, to say the least, AWESOME! At the end of the day, a surprise birthday bus party for Ranger Rick Staffperson Pat Sullivan was successfully pulled off.

Their next meeting was on Saturday, February 8 where they discussed ideas on building a new raptor rehabilitation flightpen for the District's red-tailed hawk. As one of their fund-raising projects, the club members have decided to hold a wildlife art show and auction on Monday, May 18th. The art, all done by Ranger Rick members, will be on display at the Jarrett Prairie Center from May 1st to the night of the auction on May 18th. The artshow will start at 6 pm, with a "meet the artist" opportunity until 7 pm. At 7, the auction begins. The artshow and auction is open to the general public, and all funds raised from the auction will go towards the raptor rehab flightpen.

*"What's the use of a house if you don't have a decent planet to put it on?"*

*- Henry David Thoreau*



Ranger Rick Club learns how to draw wildlife using the resident reptile, "The Professor" and other stuffed specimens.

## BAT HOUSES FOR SALE

Fifth graders from Etnyre School in Oregon have been busy building bat houses over the winter. They are for sale at \$10.00 each, and proceeds will go for their next project, which is building blue-bird houses. They will be available for purchase at the Jarrett Prairie Center's Gift Shop until June 1st. If you live close to the river, getting bats to roost around your property by putting up a bat house might be about the best thing you can do to keep mosquitos from driving you "batty!"

## FIRST 200 RESIDENTS FREE GOLF DAY

All residents with golf identification cards of number 200 or under were given first chance to call in for a free tee time for a free round of golf beginning at 8:30 AM on Monday, March 16, 1992, by calling 234-GOLF.

Residents with golf identification card numbers of 201 and higher will be offered a tee time reserve starting at 8:30 AM on Monday, April 6, 1992, if time is still available.

Photos may be taken Monday through Saturday in the Jarrett Prairie Center Gift Shop between 8:30 AM and 4:30 PM. Sunday photos may be purchased between 1 PM and 4:30 PM.

Dedication services will be at 8 AM on May 1, 1992, at the clubhouse and foursomes will be scheduled every eight minutes.

Play will be canceled if weather or grounds are unsatisfactory.

## ARTIFACTS OF THE SOUTHWEST

On Sunday, May 3, Byron resident Barb Lukan will give an informational program on "Artifacts of the Southwest" at 2 pm at the Jarrett Prairie Center. The program will highlight the Anasazi and Casas Grandes cultures that existed in Arizona between 1000 and

1300 A.D. The program is free, and the general public is invited to attend. Barb and her husband, Kurt have been extensively studying and collecting southwestern Native American artifacts for a number of years.

Byron Forest Preserve District  
7993 River Road  
Byron, Illinois 61010  
Admin. Office (815) 234-8535  
PrairieView Golf Course  
Clubhouse (815) 234-GOLF

#### BOARD OF COMMISSIONERS

Dr. R.M. Jarrett, President  
Gene Wilmarth, Vice President  
Margaret Adams, Secy/Treas.  
Gene Paquet, Commissioner  
Mike Eytalis, Commissioner

#### DISTRICT STAFF

Jack F. Philbrick, Director  
Cathie Reber, Business Mgr.  
Robert Smith, Maint. Supt.

#### MUSEUM & EDUCATION

Chris Bronny, Naturalist

#### GOLF COURSE STAFF

Steve Storz, Golf Course Supt.  
Joe Parks, Clubhouse Mgr.  
Ken Ledene, Pro/Asst. Mgr.

#### OGLETOP OPENS SPACE & PARK FOUNDATION

Mario Bortoli, President  
Gene Wilmarth, Vice President  
Jack Philbrick, Secretary  
Pat Eytalis, Treasurer  
Dr. R.M. Jarrett, Director  
Kathy Hamas, Director  
Margaret Adams, Director  
Gene Paquet, Director  
Mike Eytalis, Director  
Don Hamer, Director



*Leopold Benches - Naturalist Chris Bronny, a true believer in Aldo Leopold's philosophy of ecology, asked the Maintenance Division to reproduce a bench he had seen at Leopold's Wisconsin farm. This motivated the staff to decide to use the practical bench on the golf course instead of conventional commercial benches.*

## NATURE NITE VIDEO

A special video presentation of "The Man Who Planted Trees" will be shown at the Jarrett Prairie Center Theater on Saturday, April 18 at 7:00 pm. Narrated by Christopher Plummer, this 30 minute animated video won the Oscar for best animated short film in 1987. Refreshments will be available. Siskin and Egret called it "powerful", and gave it four coneflowers.

On Wednesday, April 22, "Saving Nature" will be presented at the Jarrett Prairie Center Theater at 7:00 pm. This 1 hour video focuses on Illinois' Natural Heritage and the efforts by individuals and groups to save what remains of our rich and diverse biotic legacy in "The Prairie State". Refreshments will be available. Siskin and Egret called it a "must-see for all inhabitants of The Prairie State", and gave it three and a half coneflowers.

**FIX DRIPPING FAUCETS. A SMALL DRIP CAN WASTE AS MUCH AS 50 GALLONS OF WATER A DAY.**

**TURN OFF THE LIGHTS WHEN YOU LEAVE A ROOM TO SAVE UP TO 20 PERCENT IN ENERGY.**

**Save paper bags from your supermarket and use them for your next load of groceries. One 15- to 20-year-old tree is required for every 700 bags.**

**THE EARTH'S SURFACE WAS WARMER IN 1990 THAN IN ANY YEAR SINCE RECORDKEEPING BEGAN IN THE MID-NINETEENTH CENTURY; SIX OF THE SEVEN WARMEST YEARS ON RECORD HAVE OCCURRED SINCE 1980.**

**THE PROTECTIVE OZONE SHIELD IN HEAVILY POPULATED LATITUDES OF THE NORTHERN HEMISPHERE IS THINNING TWICE AS FAST AS SCIENTISTS THOUGHT JUST A FEW YEARS AGO.**

#### NEWSLETTER TO BE DONE IN-HOUSE

Effective this issue, the Byron Forest Preserve District staff will prepare the newsletter in-house. The administrative division completed a four-hour introduction course on Desk Top Publishing.

Additionally, Miss Michelle Lipps, Receptionist, has completed a full course in Desk Top Publishing and will do the newsletter layout.

**BY CHRISTOPHER BRONNY,  
DISTRICT NATURALIST**

A mature oak sports about 700,000 leaves compared to 160,000 for a sugar maple. Pine trees have less than 90% leaf surface than an oak for sucking in excess carbon dioxide. Which one makes the better natural air conditioner and purifier?

Whenever possible, use nursery stock or seeds from local, natural populations. This will help preserve the local “gene pool” of a particular species, and ensure that the genetic material that has evolved in a particular area for thousands of years will continue to exist. If your favorite nursery doesn’t carry local stock, take some time and explain why it is important to preserve existing natural populations of native species (a little education goes a long way!).

are also shorter-lived trees, whereas the more conservative native species will be there "for the long haul." If you are concerned with aesthetic quality, maintenance, vigor, and wildlife habitat, native oaks like the white put our exotics and "weedier" natives to shame. Simply put, we need to be more ecologically discriminating with what we place in our yards and how we view our landscape. Just as we rate and place a value on material goods in our culture as being either "superior", "good", "fair", or "poor", so too must we begin rating the natural components of our landscape as to whether they add or detract, in the words of Aldo Leopold, "to preserve the integrity, stability, and value of the biotic community." To say that "all trees are the same" is a trifling generality that is more reflective of a poor ecological education.

We also need to think about the legacy that we are leaving behind for future generations. You may not be around to see that white oak that you planted back in 1992 in all its glory, but one of your descendants might, and I can't help but think that people will be awfully glad that someone had the foresight to plant a few oaks when they did.

By Steve Storz, Golf Superintendent

Keep in mind when you step onto the number one tee May 2, 1992, that PrairieView is, indeed, a very young golf course. Although most of its effective seeding took place only last year, we have achieved substantial progress in the transformation of this site from cow patch to notable golf links.

Although during late summer and early fall of last year, we established turf in numerous sparse areas and repaired significant washouts using sod and erosion mats, others remain. Rest assured that the golf and park maintenance divisions stand poised and prepared to launch another assault on persistent problem areas as soon as weather permits.

I reiterate a previous assessment of PrairieView. This site was tailor-made for a golf course. In my opinion, Jim Spear, the architect, did a masterful job of utilizing the natural lay-of-the-land. His design simply enhanced and drew out the potential already residing there. Don't miss PrairieView Golf Course!! Come out on opening day and play frequently thereafter. There is a certain fascination in familiarizing oneself with the construction site and then observing as the living plants transform it and restore it to a beautiful, living ecosystem.

World population is growing by 92 million people annually, roughly equal to adding another Mexico each year; of this total, 88 million are being added in the developing world.

**Forests are vanishing at a rate of some 17 million hectares per year, an area about half the size of Finland.**

*A University of Wisconsin study puts the number of rural cats across their State at 1.2 million - they kill close to a million songbirds per year (this does not include statistics for urban areas).*

**If  
everyone  
recycled  
this much  
of their daily paper,  
we'd save  
9,000  
trees a year.**

**ENVIRONMENTAL DEFENSE FUND** 

# UPCOMING EVENTS

Two conferences will be held this spring at the Byron Forest Preserve District's Jarrett Prairie Center.

On April 24-26, the Environmental Education Association of Illinois will be holding their annual meeting and conference titled, "Reaching Out: The Next 20 Years". Keynote speaker for this conference will be Joseph Cornell, author of the education classic, Sharing the Joys of Nature With Children. Mr. Cornell will also conduct a workshop on April 24. On Saturday, Mr. George Fell from The Natural Land Institute will be guest speaker. In the afternoon, fieldtrips to various locations for "hands-on" learning will be conducted. For more information concerning this event, please contact John Beaver at (309) 298-2065 or Beth Goeppinger at (815) 239-1762.

On May 16 and 17, the Byron Forest Preserve District will be hosting a natural areas conference titled: "Rock County to Rock Island: Preservation, Restoration and Management of Natural Areas Within the Rock River Bioregion." Topics ranging from endangered species to the creation of large nature preserves within the bioregion will be presented. The keynote speaker for this event is Dr. Gerould Wilhelm from The Morton Arboretum. The closing address will be given by Mr. George Fell of The Natural Land Institute. A number of fieldtrips led by regional preservation enthusiasts and ecologists to various natural areas within the Rock River valley are scheduled for Sunday. For more information, please contact the District Naturalist at 234-8535.

*During a recent fly-over of Camp McCormick (just northeast of Byron) by the Illinois Department of Conservation, over 400 deer were counted within a 3-square mile area of the camp.*

## GOLF PHOTO I.D. PERMITS AVAILABLE

As of March 24, 1992, the Byron Forest Preserve District has issued 266 photo identification permits to golfers who are residents of the Byron Forest Preserve District. The permits may be obtained at the Jarrett Prairie Center located at 7993 River Road, Byron, between the hours of 8:30 AM and 4:30 PM, Monday through Saturday and Sunday from 1 PM until 4:30 PM.

To obtain special golf rates, all residents must have a photo I.D. permit, including all ages from 13 years old and up. Not having a permit will require all individuals to pay a non-resident fee to play golf.

The procedures for obtaining a photo I.D. permit is as follows: 1. Complete application form at the Jarrett Prairie Center. 2. Show proof of age and residency by driver's license, social security card, or other means of identification. 3. A photo will be taken. 4. I.D. card will be completed. 5. I.D. card will identify you as a junior, regular, or senior golfer. 6. Junior is age 13-18, regular is age 18-64, and senior is age 65 and older.

## TAKE A HIKE!

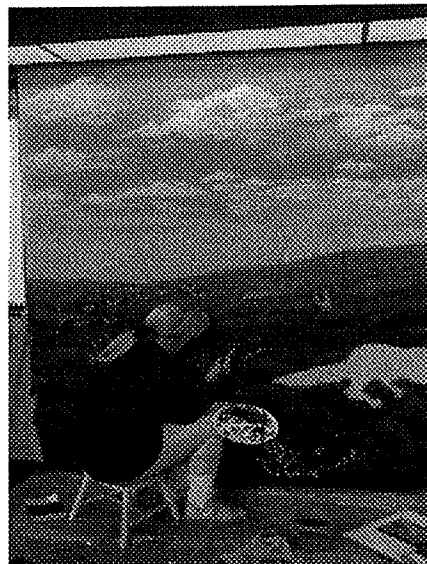
Celebrate the arrival of spring!

Join the District Naturalist, Chris Bronny for the following prairie tours:

Sunday, April 12 - 2 PM - Early spring prairie tour by reservation. Call the office at 234-8535 before April 10.

Sunday, May 10 - 2 PM - Spring prairie tour by reservation. You are encouraged to bring your cameras at this time - many of the native prairie wildflowers such as shooting star should be in full, glorious bloom! Call the District office at 234-8535 before May 8.

Sunday, June 14 - 2 PM - Late spring prairie tour by reservation. Hundreds of pale purple coneflowers, which are the species used for the District's logo, should be in bloom.



*Shown here-Michelle working on the detail for leadplant, one of the prairie wildflowers depicted in the mural.*

## WOLF DEN MURAL

Michelle Dorr from Rockford has been commissioned to do the background mural painting for the District's "Wolf Den Discovery Area". When completed, the mural will show what the native prairie and savanna might have looked like in early summer 200 years ago.

## KEEPING IT LOCAL

The Byron Forest Preserve District has been saving office paper for the past 8 months, but couldn't find a local recycling center that would accept it. Through the grapevine, District staffperson Alice White found out that Kable News in Mt. Morris was accepting office paper. They weren't recycling it in the traditional sense, but were making use of it by shredding the paper for area farmers to use as a clean, biodegradable bedding for livestock.

According to Kable News, they can't keep up with the demand, and area farmers are pleased with its performance compared with traditional straw bedding material. As a community service, there currently is no charge to farmers for the shredded bedding. For more information on how you can help reuse office paper and at the same time support area agriculture, call Kable News at 734-4151.

## FROM THE DESK OF

**KEN LEDENE**

**ASSISTANT MANAGER/  
P.G.A. PROFESSIONAL**

Let me introduce myself as the newest member addition to the clubhouse staff.

After completing nine years as Head Golf Professional and Club Manager for the Oregon Golf Club, I eagerly anticipate the opportunity to join the Prairie-View Golf Course staff. Prairie-View Golf Course will be the outstanding golf facility in this region.

In anticipation of opening day dedication on Friday, May 1, 1992, with the course open to the public on Saturday, May 2, 1992, bids for 30 additional golf carts have been sent out. This brings the total to 60 brand new canopied carts available for opening day. Arrangements have been made to rent additional carts when needed.

Weather permitting, the Prairie-View Golf Course Driving Range will open on April 1, 1992, seven days a week. Final preparations are now being completed in the clubhouse.

## GOLF LESSON PROGRAM

BY KEN LEDENE, Golf Pro & Asst. Mgr.

Starting in early April, outdoor private golf lessons will be available. Lessons will also be available in March, on a scheduled basis.

With over 15 years of teaching experience, I truly enjoy working with beginners and players of all ability. Rental clubs will be available at the clubhouse for those just starting. Both Joe and myself will offer new custom club fitting, alterations to existing clubs (especially re-gripping, which is often overlooked) and a full array of club repair services.

For those who want to get an early start, there is now a golf driving net in the basement of the Jarrett Prairie Center available during normal office hours. Please check in at the gift shop as balls are provided at the rate of \$4 per 1/2 hour.

Golf lesson rates and programs for the season are as follows:

<u>Private Lessons</u>	<u>1/2 Hour</u>	<u>1 Hour</u>
Juniors	\$12	\$20
(up to age 18)		
Adults	14	22
Junior/Senior (over 65) (Series)		
4 45-Minute Lessons		
1 Person - \$50.00		
2 People - \$35.00 each		
Adult (Series) 4 45-Minute Lessons		
1 Person - \$60.00		
2 People - \$45.00 each		
<u>Junior Clinic Group Rates</u>		
\$15.00 each junior - Monday-Wednesday-Friday - 6 Hours - 3 Days Per Week - 2-Week Session		
I. Pee Wees & Beginners (Under 10)		
II. Advanced Beginner (10-12) or previous golf experience		
III. Intermediate (over 13) or played 9 holes		
<u>Adults Over 50 Clinic</u> (Limit 12 per class)		
\$22.00 per person - Fridays - 4 Hours - 1 Day Per Week - 4-Week Session		
I. Beginners		
II. Experienced		
<u>Adults Clinic</u> (Limit 6-8 per class)		
\$30 Per Person - Tuesdays - Thursdays - 6 Hours - 2 Days Per Week - 3-Week Session		
<u>Lesson Periods</u>		
A.M. - Monday-Wednesday-Friday - 8 AM - 12 NOON		
Saturday - 9 AM - 12 NOON		
P.M. - Tuesday-Thursday - 4 PM - DUSK		
(OTHER TIMES BY ARRANGEMENT WITH GOLF PROFESSIONAL)		

## NATURE DRAWING WORKSHOP

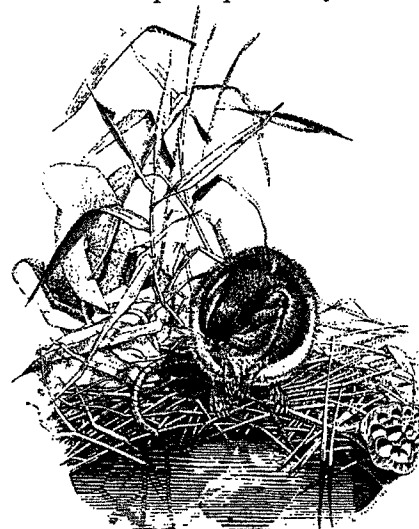
Nancy Halliday, Artist-in-Residence for the Cook County Forest Preserve District will present a nature drawing workshop on Saturday, May 9 from 9 am to 4 pm at the Byron Forest Preserve District's Jarrett Prairie Center. Nancy's work has been extensively used for scientific articles, textbooks and exhibits at institutions such as the Smithsonian in Washington, D.C. This past summer, Nancy was the "Artist-in-Residence" for the Rockford Art Museum.



Ken Ledene, Assistant Clubhouse Manager and P.G.A. Golf Professional.

The workshop will focus on using various techniques to capture wildlife through various mediums such as pen and ink and watercolor. Weather permitting, a portion of the workshop will take place "out in the field" for a close-up look at sketching native prairie wildflowers.

Beginning to professional artists are encouraged to attend - here is a rare opportunity to learn some of the techniques used by one of the finest scientific illustrators in the country. Workshop fees are \$20 for residents/\$25 for non-residents (includes art supplies and lunch). To register for this workshop, please call 234-8535 before May 1, 1992. Limited to 20 participants only.



- NANCY HALLIDAY

## STARS FROM THE PRAIRIE

GUEST ARTICLE BY CONNY PFEIFER

### BIG DIPPER

The surest sign of spring is the return of the birds from their southern homes. The geese flying north in great flocks. The first robin hopping about in our yards. But what if the birds did not return? Would winter linger until the birds brought the warmth. The Ojibwa people thought so and they told this tale of how Fisher saved the Birds of Summer.

*Long ago, winter did not come to an end. It was time for summer but still the snow would not melt. A wise brother of the tribe named Fisher knew what had happened. He knew the birds of summer brought with them the warmth that would melt winter away. But this year the birds*

*had not come. Someone had captured them and was keeping them all to himself. Fisher knew of only one man selfish enough to do such a thing. The man was a chief name Cruel Face.*

*Fisher and his people traveled to the village of Cruel Face. All about them the land was cold and wind swept but as they neared the village of Cruel Face the air grew warmer and the grass greener. Cruel Face did indeed have the birds of summer.*

*Fisher had a plan. His people would raise a loud commotion and the people of Cruel Face would chase after them, running in many different directions. This would allow Fisher to steal into Cruel Face's lodge and release the birds. It all worked. Fisher was soon in the chief's lodge and these in boxes were the birds. But Cruel Face was also in the lodge. He*

*saw Fisher and grabbed a big stick. But Fisher was quick and agile and flew about the lodge dodging Cruel Face's blows. As they fought, Fisher managed to open every box. Out flew the thrushes, warblers, finches, sparrow, wrens, swallows, bluebirds, and tiny hummingbirds. They flew from the lodge in a great cloud and as they flew off, they returned the warmth of summer to all the land.*

*And what became of Fisher? As the last bird escaped, Cruel Face cornered Fisher. He raised his huge stick ready to do away with brave Fisher. Fisher crouched and with all his might jumped as high as he could. He jumped to the very stars themselves. On starry nights, you can see brave Fisher. He is the stars of the Big Dipper. His long bushy tail is the handle of the Big Dipper.*

IT IS ESTIMATED THAT A MINIMUM OF 140 PLANT AND ANIMAL SPECIES ARE CONDEMNED TO EXTINCTION EACH DAY.

### DISTRICT TO SPONSOR PHOTOGRAPHY CONTEST

The Byron Forest Preserve District is sponsoring a photography contest that is open to the general public.

The theme for the contest can be of any Byron Forest Preserve District program, facility or natural characteristic (such as prairie wildflowers, animals, etc.) to qualify. Entries will be judged on composition, quality and general appearance.

#### ENTRY RULES

\*Professional photographers and employees of the Forest Preserve District are not eligible.

\*Photographs must be no smaller than 5x7". They need not be mounted. An entry form must be on the back of the photo.

\*Entry forms may be picked up at the Byron Forest Preserve District's Jarrett Prairie Center.

\*Photographs will not be returned. They may be used in promotional materials with credit given to the photographer.

\*Top entries in each category will be on display at the Jarrett Prairie Center.

\*Photographers may enter as many photos as they wish.

#### AWARDS

\*Cash prizes will be awarded to the winning entries.

\*Photographers will be paid an honorarium when any of their photos submitted in the contest are used in any of the District's publications.

#### JUDGING

\*Professionals in the field.

#### CATEGORIES

(A) Nature (B) Programs  
(C) Facilities (D) Other

Entries will be accepted at:  
Jarrett Prairie Center  
7993 River Road  
Byron, IL 61010  
815/234-8535  
Mon-Sat, 8:30 a.m.- 5 p.m.  
Sun, 1 - 4:30 p.m.

NAME \_\_\_\_\_

ADDRESS \_\_\_\_\_

CITY \_\_\_\_\_ STATE \_\_\_\_\_

ZIP CODE \_\_\_\_\_ TELEPHONE \_\_\_\_\_

BIRTH DATE \_\_\_\_\_

#### ENTRY DETAILS

CATEGORY:

(C) Facilities \_\_\_\_\_

Type of Film \_\_\_\_\_

Where Shot \_\_\_\_\_

(A) Nature \_\_\_\_\_

(D) Other \_\_\_\_\_

Date \_\_\_\_\_

(B) Programs \_\_\_\_\_

Type of Camera \_\_\_\_\_



## OUTINGS AND LEAGUE PROCEDURES

The Byron Forest Preserve District has established guidelines for groups who wish to have outings or leagues at the PrairieView Golf Course during the 1992 season.

**Outings:** 1. All outings are accepted on a first-come, first-serve basis. 2. Tee times are restricted to 6 AM - 4 PM. 3. A deposit will be paid at the time the date is set. 4. All golf fees must be paid 10 days in advance and will include a 50 cents per golfer reservation fee. The original deposit will count towards this reservation fee. 5. Play days must be requested 45 days in advance if not done prior to March 14, 1992. 6. Outings can be 9 or 18 holes. 7. The golfers can be a minimum of 20 to a maximum of 200. 8. Reservations made six months in advance require a \$25 deposit. Others require a \$50 deposit. 9. Other requirements and information will be given upon request.

**Leagues:** 1. The district does not sponsor any league play. Leagues are to be run independently of the Byron Forest Preserve District. 2. Leagues will be accepted on a first-come, first-serve basis. 3. Being in a league does not guarantee "tee" time, as all league golfers are to register in the same manner as any open recreational golfer. However, through proper cooperation of the league and course manager, play on the course can be efficiently planned. 4. All league secretaries are required to notify the director as to location, time, day, and the number of golfers along with the starting date for the league. A contact name and number should also be included.

**Reserved Tee Time:** The following procedure applies to reserve tee time during the season: 1. A charge of \$1 per foursome for either residents or non-residents will be charged for either a weekly or seasonal reserve tee time. 2. Reserved tee times will be pre-empted by tournaments and play days only if posted three (3) weeks in advance. 3. Annual or seasonal reservations are permitted for both residents and non-residents during specified hours and designated time slots. 4. Reserve tee

time request forms are now available at the Jarrett Prairie Center. Please submit \$1 per tee time at registration. 5. All seasonal reservations must be for the same time no matter the frequency. 6. Failure to show three (3) times is grounds for forfeiture of all remaining reservations for the year. 7. Residents will have first priority on weekend tee times on a weekly basis. 8. Resident golfers may reserve weekends two (2) weekends in advance. 9. Non-resident golfers may reserve weekends eight (8) days in advance.

**Fees & Charges:** Listed below are the fees for the 1992 season at the PrairieView Golf Course.

### A. Season Permits:

Resident Adult	\$325.00
Res. Adult Couple	525.00
Non-resident Adult	400.00
Non-res. Adult Couple	600.00
Resident Sr. Citizen	275.00
Resident Sr. Couple	375.00
Non-resident Sr.	325.00
Non-res. Sr. Couple	525.00
Junior*	70.00
Non-resident Junior*	80.00

### B. Round Fees: WD WE

Resident Adult (18 holes)	\$12.00	\$15.00
Non-resident Adult (18 holes)	14.00	17.00
Res. Sr. (18 holes)	10.00	15.00
Non-res. Sr. (18)	12.00	17.00
Res. Jr.* (18 holes)	7.00	15.00
Non-res. Jr.* (18)	10.00	17.00
League (18 holes)	12.00	15.00
Play Day (18 holes)	12.00	15.00
Res. Adult (9 holes)	9.00	11.00
Non-res. Adult (9)	11.00	13.00
Resident Sr. (9 holes)	8.00	11.00
Non-res. Sr. (9 holes)	9.00	12.00
Res. Junior* (9 holes)	7.00	11.00
Non-res. Junior* (9)	10.00	13.00
League (9 holes)	9.00	11.00
Play Day (9 holes)	9.00	11.00
10-Play Corporate	140.00	140.00

\* All juniors must be accompanied by an adult when outside designated junior play hours.

### C. Miscellaneous Fees: WD WE

Motorized Carts(18)	\$13.00	\$15.00
Motorized Carts (9)	10.00	12.00
Private Carts	6.00	8.00

Pull Carts	1.00
Reserve Time (4-some)	1.00
Reserve Time	
Playday Foursome	2.00
(Negotiable authority permitted)	
Club Rental	5.00
(Driver's license for deposit)	
Driving Range Club	1.00
Driving Range (Sm. Bucket)	1.50
Driving Range (Lg. Bucket)	2.00
Driving Range Coupons	15.00
(12 Small Buckets)	

## WHERE ARE WE . . . WHERE ARE WE GOING? FROM THE DIRECTOR

Unfortunately, mild open winters do not always provide good working conditions when you want to clear underbrush or cut dead trees.

The district development crew has been unable to work on the golf course or prairie as much as it had wanted to this winter. However, the course will be playable and the opening for the general public is Saturday, May 2, 1991.

Presently, the pollution problem that has appeared on the Rogers' land adjacent to the PrairieView Golf Course has not spread to the new Prairie Preserve wells. We are monitoring the situation.

This past month, Quality Metal made a generous donation of \$5,000 to the Byron Forest Preserve District's Ogle Top Open Space and Park Foundation.

These funds will be used and were dedicated for expansion of the recreational path. The Byron Recreational Pathway Committee is expected to expand the plan to cross Route 2 and will be heard from this summer.

Hundreds of bikers and hikers have been using the path.

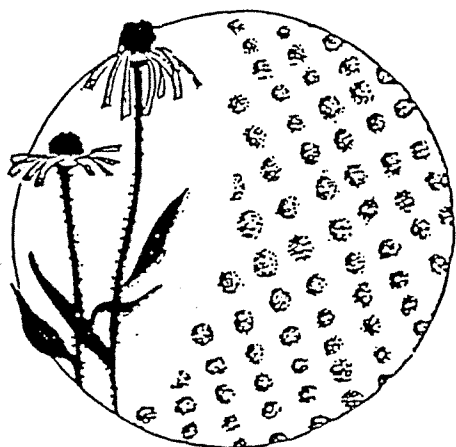
This winter, twenty-five new Leopold benches were constructed by the staff. The department has had a request for the district to consider selling these benches.

This spring, a total of \$200,000 worth of improvements are being planned. These were from previously approved priorities and funding.

As always, we ask you to submit recommendations for improvements that you wish to see.







# **PRAIRIEVIEW GOLF**

*Byron, Illinois*

**GRAND OPENING!!**

**PRAIRIEVIEW GOLF COURSE**

**BYRON, ILLINOIS**

**MAY 2, 1992**

**CALL FOR INFORMATION & RESERVATIONS**

**(815) 234-GOLF**

**CHAMPIONSHIP COURSE**

**WITH FULL SERVICES**

**INCLUDING PGA TEACHING PRO**

**BYRON FOREST PRESERVE DISTRICT  
7993 RIVER ROAD  
BYRON IL 61010**

**BULK RATE  
U.S. POSTAGE PAID  
BYRON, ILLINOIS  
PERMIT NO. 50**

**POSTAL PATRON  
BYRON IL 61010**



SUMMER 1992

# BYRON FOREST PRESERVE DISTRICT NEWS

## CREEPY CRAWLERS ARE HERE!!

Starting on June 4, the Byron Forest Preserve District will host a 6 week traveling exhibit from The Chicago Academy of Sciences titled "Creepy Crawlers". This exhibit explores the myths and misconceptions surrounding some of nature's more unusual, and sometimes frightening creatures, such as spiders, snakes, and bats, and shows the important role that they play in our ecosystem. Come and visit them at the Jarrett Prairie Center!

## TREE IDENTIFICATION WORKSHOP

On Thursday, June 25 and Friday, June 26, join Howard Fox for a Tree Identification Workshop sponsored by the Byron Forest Preserve District. Howard Fox is the retired Forester from Sinnissippi Tree Farm, and his knowledge of regional vegetation is unsurpassed. To cover the cost of materials, there will be a fee of \$12.50 for district residents and \$15 for non-residents. Registration is open to a minimum of 6 and a maximum of 15 participants. Classes will start at 5:30 pm, and end at 7:30 pm both sessions. Call (815) 234-8535 ext. 202 for further information.

Pacific Gas & Electric of California burns far less oil than it did in 1980 - even though it delivers 25 percent more electricity to its customers. How? The power company helped weatherize 1.8 million homes, pushed for the replacement of thousands of electricity-gulping appliances with miserly new devices, and developed solar, biomass and wind power.

## PICNIC ON THE PRAIRIE!!

All residents are invited to the Byron Forest Preserve District Prairie Preserve on Saturday, June 13, 1992, starting at 4:30 PM for free hot dogs, lemonade, and ice tea followed by a concert at 6 PM by the fabulous Decatur Park Singers.

Non-residents will be charged \$2 for refreshments but are invited to attend the concert at no charge.

Bring lawn chairs or blankets and hear and see some of the Midwest's finest entertainment.

While you're enjoying the picnic,

stop in and visit the Jarrett Prairie Center. Its hours will be 8:30 AM until 6 PM. You will see the "Creepy Crawlers" insect exhibit from the Chicago Academy of Sciences, you can see and hold "The Professor", a live fox snake straight from the wilds of the Illinois prairie, and you can crawl through and discover the wonders of our "Wolf Den".

You can experience a glimpse into our past by joining the district naturalist for a first-hand look at the rare and beautiful native dolomite prairie. There will be a prairie tour at 6 PM.

## PLAY DAYS AT PRAIRIEVIEW

Date	Tee Time
1992	Company (Course Closed)
6-5	IDS Financial 1:04-1:44 PM
6-6	Lake Louise 8-10 AM
6-13	Unison Ind. 7:36-7:52 AM
6-13	Sundstrand 9:04-10:24 AM
6-13	Quality Metal Noon-12:48 PM
6-19	Harmony Club 10-11:30 AM
6-20	Gates Rubber 9:28-10:16 AM
6-28	Rockford American Legion 9:44-11:12 AM
6-30	Byron Chamber 11:04 AM-1:36 PM
7-10	Counselor Co. 2:32-3:28 PM
7-19	Leombruni's 6 AM-12:30 PM
7-25	J. Rubin & Co. 8:32-9:28 AM
8-1	Holcomb Fire Dept. 6:00 AM-12:30 PM
8-15	RIAA 7:44 AM-12:08 PM
8-22	Belvedere Co. 8:00-10:00 AM
8-23	Hartzog Aviation 10-11:04 AM
8-27	DPMA 9:04 AM-12:06 PM
9-12	Specialty Screw 8:24-9:20 AM
9-12	Sundstrand 10:08-11:20 AM

10-26 Senior Golf  
Outing 9:36 AM-1:04 PM  
Mondays Kysor/Westran  
(League) 4:30-5:00 PM  
Mondays Reg-Ellen  
(League) 4:30-5:00 PM

Play days have priority over all golfers during their scheduled time. However, since most of these play days will start on the front nine, the back nine will be available most play days. This will permit most golfers to play without any inconvenience due to the play day.

### JUNE GOLF SPECIAL

All Golf Carts Rented Before 9 AM,  
Monday - Sunday Will Be Rented  
At 1/2 PRICE.

Weekdays-9 holes (\$10)	\$5
18 holes (\$13)	\$6.50
Weekends-9 holes (\$12)	\$6
18 holes (\$15)	\$7.50

## IF YOU BURN IT, THEY WILL COME...

By Christopher Bronny, District Naturalist

The ancient rhythm of fire is once again returning to the Rock River valley. As many of you may have noticed this past spring, quite a few areas up and down the river valley were burned. While some of these fires were accidental (a carelessly tossed cigarette) and "wild-fires" in the truest sense, most of the fires were purposely set and carried out as "controlled" burns by private landowners and public agencies. The reasons for fire making a comeback as an accepted practice on our landscape are varied, but I personally hope that it marks the beginning of a new era of ecological awareness in our culture. By conscientiously returning fire to our roadsides, oak woods, waterways, and degraded natural areas, we recognize the role that fire played as an integral part of the forces that help shaped this portion of the earth's natural landscape over millennia.

Since the time of European settlement approximately 150 years ago, we have done everything possible to suppress wildfires. Our environmental legacy is that we now live in a fire-starved landscape. The next time you look out over the Rock River valley, you are seeing more trees today than you would have seen 200 years ago. This policy of fire suppression was quite understandable due to the cultures from which we arose; the rise of Western Civilization, especially around the time of the "Age of Enlightenment" and our Judeo-Christian heritage, basically regarded the primeval wilderness as inherently "evil" that must be tamed and harnessed for mankind's utilitarian needs. According to this worldview, how could there possibly be any "good" types of wildfire? Our cultural perceptions and practices, along with our models of agriculture, reflected this fact. As a result, natural areas of prairie that initially escaped the plow quickly grew up into brush if not periodically grazed or mowed, and oak savannas quickly lost their ecological integrity as plant communities shifted in the absence of fire in favor of shade-tolerant species. Compounding

these problems over the last 150 years has been the introduction of exotic and non-native species that also thrive in the absence of fire, or thrive in disturbed situations such as in agricultural or urban environments. Some species, such as black locust and garlic mustard, are so effective at colonizing disturbed areas that they can virtually outcompete everything else, often at the expense of whatever native species have managed to persist.

The "status quo" of our environment as we know it leaves many of our native conservative plant species literally biotic "refugees" in their own land. We must understand and accept the fact that the great majority of native plants and animals in the Rock River valley and the midwest evolved and co-existed with the presence of fire for thousands of years. To do the remaining fragments of our natural landscape ecological justice, we must once again bring back this ancient and powerful tool. If applied correctly, the plants (and animals!) that make up our native prairie, savanna and wetland communities will respond in a positive manner.

If you are concerned about burning and the "Greenhouse Effect", the amount of carbon released through the natural processes of biological decay from the dried vegetation of the previous years' growth is the same whether the prairie is burned or not; it is simply liberated and recycled much quicker when fire is applied. However, it should be noted that many of the warm-season prairie plants (especially the grasses) are known as C4 plants, which means that they are extremely efficient at recycling atmospheric carbon dioxide, making them, chloroplast for chloroplast, just as efficient as trees in reducing the excess carbon dioxide that contributes to the "Greenhouse Effect."

The Byron Forest Preserve District has been annually conducting controlled, or prescribed burns of its dolomite prairies and oak savannas since the "Prairie Preserve" was purchased in 1985 and 1988. These fires have been purposely set with the intent of "tipping the ecological balance" in favor of the native species that have managed to persist despite the intense grazing and disruption

of fire that occurred since European settlement. The results have been, to say the least, dramatic.

Come out and visit the "prairie preserve" and see for yourself the wonderful recovery of our native plant communities. As you view the beauty of a white and lavender-covered slope of thousands of shooting stars in mid-May; a galaxy of pink flowerheads from pale purple cone-flowers in mid-June; or waves of rose-purple rough blazingstar shimmering in the late August sun, you are witnessing the miraculous rebirth of a "lost landscape" that now has, through the dedicated efforts of many individuals and the community of Byron, a second chance at playing out its ancient drama as an integral part of the unbroken natural heritage that makes the Rock River valley so special.

---

## PRAIRIE CENTER MUSEUM "WISH LIST"

The Byron Forest Preserve District is always interested in obtaining and displaying cultural artifacts and natural objects related to the Rock River valley at the Jarrett Prairie Center Museum. These items would be seen and appreciated by the thousands of visitors that pass through our center each year. These items could be anything relating to the cultural history of the region (such as early or unusual farm tools, early newspapers, posters highlighting an early business or event, unique or unusual nineteenth and twentieth century photographs, Native American artifacts), or natural objects such as an unusual bird's nest, fossils, mammal, bird, or reptile skulls, skins, furs, or entire collections of specimens such as birds, mussels, etc.

If you have any items you would like to either donate on a permanent or temporary basis for display at our museum, please contact the District Naturalist at 234-8535.

---

***While millions of American teenagers anguish over excess pounds, over 15 million children die every year from diseases brought on by or complicated by malnutrition.***

## SPOTLIGHT ON WILDFLOWERS

Shooting star (Dodecatheon meadia) is one of the most delicate and beautiful prairie wildflowers that blooms in the spring. In our region, peak flowering (anthesis) occurs around May 12. Shooting star can be found in dry and mesic (well-drained) prairies, as well as in open rocky woods and oak savanna. The population of this species at the "prairie preserve" is quite healthy, with numbers increasing every year as ecological recovery favors the return of the native plant communities. There are some slopes that are literally covered with thousands of shooting stars, with densities as high as 125 plants per square meter!

It is a member of the primrose family, and other common names for this plant include American cowslip, Indian chief, pride-of-Ohio and prairie pointers.

In early spring, a light green basal rosette of leaves appears, followed by a leafless flower stalk arising from the center of the rosette, growing to a height of from 6 to 20 inches. The attractive flowers, which range in color from white to a deep lilac, each have five narrow petals which curve upward to form a star-like pattern. A beaklike cone composed of stamens protrudes from the center, accentuating its shooting-star shape. Pollination is achieved by bumblebees.

The seeds of shooting star are ripe by late August and look like reddish-brown coffee grounds that will readily germinate when conditions are right. The only problem with raising this species from seed is that it takes approximately 5 or 6 years before you get a mature flowering plant. PATIENCE IS A VIRTUE in this case, but the results are well worth it. Fortunately, more and

more nurseries specializing in regionally true native wildflowers are raising vigorous and healthy transplants of this and other species that are ready for planting in our own native wildflower gardens.

---

According to a report from the National Academy of Sciences, insect species are so prolific in a tropical rainforest that two and a half acres may contain over 42,000 different species. A single tree may be home to over 1,700 insect species. A single square meter of leaf will often house 50 species of ants alone!

---

The average American consumes the meat of seven 1,100 pound steers in his or her lifetime. Over 70 percent of the grain produced in the United States is fed to livestock. Two-thirds of all the grain exported from the United States to other countries goes to feed livestock rather than to feed hungry people.

## RANGER RICK NEWS

For their fieldtrip in April, Ranger Rick club members went to visit Volo Bog and Glacier Park in McHenry County. Club members are shown on top of a kame at Glacier Park, which is a mound of sand and rock deposited by the last advance of the Wisconsin ice sheet that took place over 15,000 years ago. (pictured right)

While on their hike, the group was extremely fortunate to find a spotted salamander crossing the trail on its way to its wetland home. The students had a unique opportunity to see the salamander up close. Unfortunately, chance encounters like this may become increasingly rare as populations of these habitat-sensitive creatures continues to decline. Scientists are concerned that amphibian populations in general are extremely vulnerable to the effects of environmental pollution, especially "acid rain."

## ATTENTION CRAFTERS!!!

We are still looking for people interested in selling their hand-made crafts and unique nature-related items on consignment in our gift shop. Contact Cathie Reber at (815) 234-8535 ext. 203.

*"Air Fresheners" don't really freshen anything. When you use commercial air fresheners, you release toxic chemicals like creosol, naphthalene, phenol, ethanol and other pollutants. Some of these chemicals work to DEADEN your sense of smell. If you want things to smell better, open up your windows and clean up!*



## ILLINOIS RIVERS PROJECT

Alyssa Knutson, Krissy Ketchum, Erin Grossman and Tedra Newman, High School students from Amboy, are involved in the "Illinois Rivers Project". For their project on Illinois' native prairie, they did extensive research on the ecosystem, but wanted more information on the role fire played in the maintenance and evolution of the prairie community. On March 19, they got their chance by assisting the District Naturalist in conducting a controlled burn at the "prairie preserve." While two of the students filmed the burn with video and 35 mm, the other two were involved with "getting their feet burned" by being at the front of a controlled burn! With the information gathered on their visit, they then gave a presentation about their project to a congress of other students involved state-wide with the "Illinois Rivers Project" in late March.

## Portion Of "Prairie Preserve" To Become Dedicated Illinois Nature Preserve

By a unanimous vote, the Byron Forest Preserve District's Board of Commissioners have recently decided to dedicate approximately 155 acres of the "prairie preserve" as an Illinois Nature Preserve. Once the final papers are signed by the Illinois Nature Preserves Commission and Governor Edgar, it will protect, in perpetuity, the natural character and native plant communities that make this site ecologically significant and aesthetically special for future generations to study, admire, and enjoy.

### TAKE A HIKE!

Join the district naturalist for a prairie walkabout at 2 PM on Sunday, June 14. Pale purple conflowers should be in full, glorious bloom - bring your cameras!!

Prairie Tour - by reservation. Saturday, July 4 at 2 PM. Call the district naturalist at 234-8535 before July 2.

Prairie Tour - by reservation. Sunday, July 19 at 2 PM. Call the district naturalist at 234-8535 before July 17.

### HOLE-IN-ONE!!

On May 19, Gregg Marinelli made the first hole-in-one on #8. Unfortunately, it was unofficial, because he was golfing alone.

CONGRATULATIONS!!

## SUMMER CALENDAR

June 4 through July 19: "Creepy Crawlers" exhibit from The Chicago Academy of Sciences at the Jarrett Prairie Center. This exhibit is free, and open to the general public.

Monday, June 8: Prairie Tour - Byron area seniors - 12:30 pm.

Friday, June 12: "Kindercare" tour - 10:00 am - 1:00 pm.  
Middlecreek Prairie Tour - 6:00 pm.

Saturday, June 13: PICNIC ON THE PRAIRIE - 4:30 PM  
Girl Scout Tour - 1 - 2:30 pm.

Sunday, June 14: Prairie Tour - 2 pm.

Thursday, June 18: Ogle County Senior Services tour - 10 am - 1 pm.

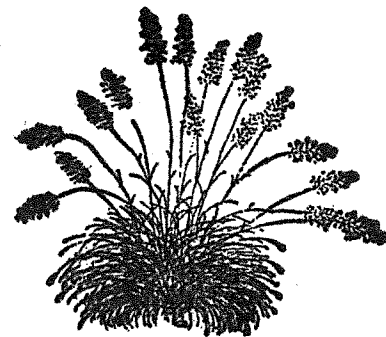
June 22 - 24: Prairie Ecology workshop at the Jarrett Prairie Center. Call Kishwaukee College for more information.

Tuesday, June 23: Byron Fifth grade prairie tour; 8:30 to 11:30 am.

June 25 and 26: Tree I.D. Workshop with Howard Fox at the Jarrett Prairie Center from 5:30 to 7:30 pm. Call the District office at 234-8535 for more information.

Thursday, July 2: Taft Campus Swedish Prairie Tour from 6:30 to 8:30 pm.

Thursday, July 23: Prairie Tour; Byron Public Library, 1:30 pm.



## PRAIRIEVIEW GOLF COURSE 1992 FEES AND CHARGES

	W/D	WE/HOL.
GREEN FEES:	9/18	9/18

### RESIDENT:

Adult	\$9/12	\$11/15
Senior	8/10	11/15
Junior	7/7	11/15

### NON-RESIDENT:

Adult	\$11/14	\$13/17
Senior	9/12	13/17
Junior	10/10	13/17

### LEAGUES &

PLAY DAYS:	\$9/12	\$11/15
------------	--------	---------

### MOTORIZED CARTS:

Rentals	\$10/13	\$12/15
Private	6/6	8/8

### SEASON PASSES:

RESIDENT	Single/Couple
Adult	\$325/525
Senior	275/375
Junior	70/
NON-RESIDENT	Single/Couple
Adult	\$400/600
Senior	325/525
Junior	80/

Corporate 10-Play Pass - \$140.00  
(good for 7 days a week & free reservations)

Reserve Tee Time-	\$1.00
Pull Carts (9 or 18 holes)	\$1.00
Club Set Rental	\$5.00
Driving Range Club Rental	\$1.00

### DRIVING RANGE BALLS:

Large Bucket (60 balls)	\$2.00
Small Bucket (30 balls)	\$1.50
Coupon for 12 small buckets	\$15.00
Photo I.D. Card	\$1.00
Replacement Card	\$10.00

### RESIDENT:

(1) Adult - permanent residence within Byron Forest Preserve District (same boundaries as Byron School District).

(2) Senior - 65 years of age and over and resides within the district.

(3) Junior - under 18 years of age and resides within district or is a full-time registered student in grades up through 16.

### NON-RESIDENT:

(1) Adult - resides outside district.  
(2) Senior - 65 years of age and over and resides outside district.

(3) Junior - under 18 years of age or is a full-time registered student in grades up through 16 and resides outside district.

Designated Playing Times for Previously Listed Categories:

(1) Adults - open play Mon-Sun, including season pass holders.

(2) Seniors - designated hours are:  
> Mon-Fri 6 AM - 4 PM for senior rates and senior passes.  
> Weekends and holidays after 3 PM for senior rates and senior passes.

> Resident and non-resident rates apply at all other times.

(3) Juniors - designated hours are:  
> Mon-Fri 6 AM - 4 PM for junior rates and junior passes.  
> Weekends and holidays after 3 PM for junior rates and junior passes.

> Resident and non-resident rates apply to play outside designated junior hours.

GOLF LESSONS by PGA Professional Ken Ledene, Jr.

\* Private and group lessons by appointment - call 234-GOLF.  
\* All lessons include range balls.  
\* Please call 24 hours in advance if necessary to reschedule or cancel lesson.

\* Playing lesson available - Please ask for price.

\* Rental club(s) are available.

### Lesson Fees:

	Private	Series	Series
	30 min./1 hr.	4-45 min.	4-45 min.
		1 Person	2 People
Jr.	\$12/20	\$50	\$70
Sr.	12/20	50	70
Adult	14/22	60	90

### JUNIOR CLINICS:

\* 8-12 Students per class. \$15/jr.

\* Mon-Wed-Fri - 1 hr/day-2 weeks

\* All classes begin June 15

I. Pee Wees & beginners - 3 PM (ages 7-10)

II. Advanced beginners - 1:45 PM (10-12 or some experience)

III. Intermediate - 12:30 PM (over 13 or played 9 holes)

### ADULT AFTERNOON CLINICS:

\* 6-10 Students per class-  
\$30/Person

\* Tues/Thurs-

6 (1) hour sessions / 3 weeks

I. Beginners - 1 PM Tues., June 2

### ADULT EVENING CLINICS:

\* 6-10 Students per class-  
\$30/Person

\* Tues/Thurs-

6 (1) hour sessions / 3 weeks

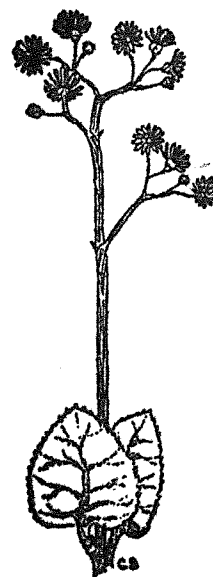
I. Beginners - 6 PM Tues., June 9

II. Advanced Beginners - 7:15 PM Tuesday, June 9

### PUTTING/CHIPPING CLINIC:

\* 6-10 Students per class-  
\$10/Person

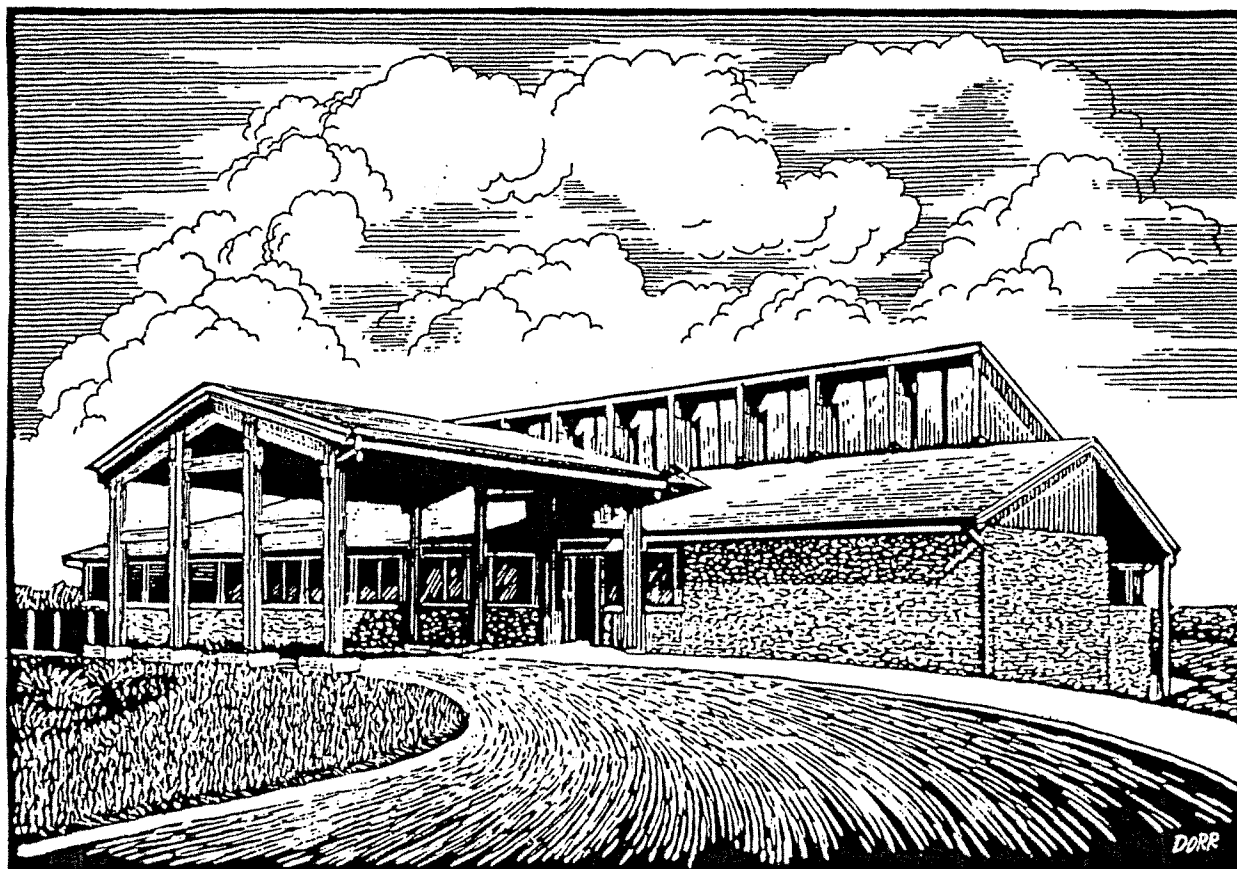
I. Intermediate - 2:30 - 4 PM Sat., June 6



BYRON FOREST PRESERVE DISTRICT  
7993 RIVER ROAD  
BYRON IL 61010

BULK RATE  
U.S. POSTAGE PAID  
BYRON, ILLINOIS  
PERMIT NO. 50

POSTAL PATRON  
BYRON IL 61010



Noted commercial artist, Willard Dorr, completed this acid wash drawing of the Jarrett Prairie Center that will be used for postcards and brochures.





Fall 1992

# BYRON FOREST PRESERVE DISTRICT NEWS



## SOMETHING OLD - SOMETHING NEW

By Roger Gustafson

In its efforts to continue to provide a look into our world, past, present, and future, a new interactive exhibit has been created for a brief journey into the lives of one of Northern Illinois indigenous peoples of the early 1800's. Located just south of the Byron Forest Preserve District's south shelter is a stylized Potawatomi Living Site.

Designed to provide only a cursory view of the past and into a moment of the lifestyle of the once present Potawatomi Indians.

The site consists of a garden, tobacco plot, and a wigwam.

The garden contains numerous heirloom varieties of vegetables once grown by the Potawatomi and many other tribes.

Corn, beans, and squash or the "3 sisters" were predominant vegetables cultivated while many other foods were readily available from nature. In this garden (or GITI'GAN), the Salt's Cave Squash has been carbon dated to almost 5000 years ago.

The tobacco plot contains the "original" tobacco (NICOTIANA RUSTICA) grown in the "midwest region" for many, many hundreds of years.

The plot is also surrounded by a woven willow fence to emphasize that only special designated persons are allowed to tend the plants.

As tobacco is the most sacred plant to most traditionally believing North American Indians, the ground is considered sacred. Therefore, the plot may be viewed but not entered.

Constructed of maple saplings which are bent and bound together forming a roundish, bread-loaf shaped structure, the wigwam is of family-size and was a winter home which originally was covered with tree bark or woven mats.

The wigwam on display is covered with a wool-type cloth of Euro/American origin.

It is recorded in journals that as early as the mid 1600's, the Europeans were trading cloth (sometimes sail cloth from their ships) to the indigenous peoples for furs and such. Hence, the district's representation is "correct". For more information and reservations concerning the exhibit, contact the Jarrett Prairie Center at (815) 234-8535 extension 202.

## NEW EDUCATION COORDINATOR

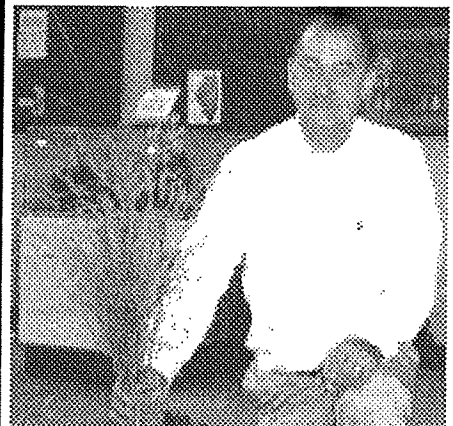
Mickey Bowman is our new Deputy Director/Education Coordinator. He has worked in the Rockford Park District Outdoor Education Program and, for many years, taught science in the Rockford Public Schools.

Mickey brings a wide variety of experiences and expertise to the district. Some of the areas of skill include:

- Outdoor education programs
- Nature study
- Hands-on science programs
- Astronomy education
- Planetarium education
- Solar energy applications
- Solar greenhouses
- Wood working/wood carving

He has worked with the district in the past, serving on the committee that designed the Jarrett Prairie Center, assisting with the design of the super-insulated maintenance buildings, and conducting a comprehensive energy audit of the original office.

Mickey is especially interested in developing new programs for the Prairie Center. He will be gathering ideas for programs, classes, events, activities, and displays that Byron residents would like to see.



Byron Forest Preserve District &  
PrairieView Golf Course  
7993 N. River Road  
Byron, IL 61010  
Administrative Office: 234-8535  
Golf Course/Clubhouse: 234-GOLF

#### **BOARD OF COMMISSIONERS**

Dr. R.M. Jarrett, President  
Gene Wilmarth, Vice President  
Mike Eytalis, Secy/Treas.  
Gene Paquet, Commissioner  
Jim Jennings, Commissioner

#### **DISTRICT STAFF**

Jack F. Philbrick, Director  
Cathie Francis, Business Mgr.  
Robert Smith, Maint. Supt.

#### **MUSEUM & EDUCATION**

Michael (Mickey) Bowman,  
Deputy Director and  
Education Coordinator

#### **GOLF COURSE STAFF**

Steve Storz, Golf Course Supt.  
Ken Ledene, Clubhouse Mgr.

#### **OGLETOP OPENS SPACE & PARK FOUNDATION**

Mario Bortoli, President  
Gene Wilmarth, Vice President  
Jack Philbrick, Secretary  
Pat Eytalis, Treasurer  
Dr. R.M. Jarrett, Director  
Kathy Hamas, Director  
Margaret Adams, Director  
Gene Paquet, Director  
Mike Eytalis, Director  
Don Hamer, Director

#### **HERITAGE FARM COMMITTEE**

Mike Eytalis, Chairman  
Jack Philbrick, Secretary  
Stew Norton  
Armour VanBriesen  
Helen Debnam  
Barb Lukan  
Clyde James  
Nancy Typer  
Dr. R.M. Jarrett

## **FROM THE WOLF DEN...**

### **SO LONG....**

As many know by now, our intrepid, hard-working, personable naturalist, Chris Bronny, has left the Byron Forest Preserve District to take a teaching position with the Byron School District.

Chris' amiable character, his wonderful knowledge, rapid-fire delivery, and great capacity for sharing will be



missed. However, the interest which he inspired in visitors to the Jarrett Prairie Center will be in evidence for a long time to come. We hope he will continue to be a part of our program support.

A hardy thank you, Chris, from all for a job well done and may your enthusiasm continue to soar like the hawk.

## **FROM THE DIRECTOR:**

Today we can safely say, PrairieView Golf Course will be the finest golf course in Ogle County within a very short time. This is the commitment of the Board of Commissioners and the staff.

As most of you know, we have taken a run down farm with minimum top soil and have designed a life time recreation facility. This facility will serve our community for generations to come. It is an asset to the community.

We must apologize for not having everything done before we opened. We could not complete everything for several reasons. The main reason we could not complete the course has been weather. We hope you have noticed two things about our operation. The first is in order to save money, we are using our own staff to do a major portion of the work. Secondly, we accomplish a lot when the weather breaks.

From the day he came on board, Golf Superintendent, Steve Storz has trained a professional staff, directed construction, and has worked on a "hands on" mode day and night. We hope you will all recognize his efforts. His heavy duty backup, Superintendent of Maintenance, Bob Smith, has shown he can take on added work loads. Bob and his crew have been building sand traps, while still providing good maintenance to the entire district.

This past month, two major projects received most of our attention. Sand trap construction and cart paths were our main concern. Next, we will work on roughs. We know you want them better and so do

we. By fall, we will shift to some tree planting.

As many of you observed, we have a new manager of the clubhouse, PGA Professional, Ken Ledene. He took over from Mr. Joe Parks, who gave us more of his time and skill than you will ever know. Mr. Parks committed himself to getting us up and running even though he really did not want to work full-time. Joe is still on staff and will continue to be a fantastic contributor to our development as long as he wants. He deserves our real appreciation.

For the next 90 days, you will see many more advances. One thing we hope you will be patient with, is the way we must enforce the rules. This is to make the program work for you.

All 500 registered forest preserve golfers are invited to a planning program this winter. We will take all your suggestions and recommendations to both the staff and board. In this way, we can make improvements in as many ways as possible. We may have some changes in mind that you have already suggested. The meeting is presently scheduled for Saturday morning at 9 AM in the basement classrooms of the Jarrett Prairie Center on November 14, 1992. Refreshments will be provided.

In closing, we want you to know that your PrairieView Course will continue to improve and we appreciate your patience. You will have a course to be proud of!

## **OL' T.M.**

The Tully Monster, the official state fossil of Illinois, is being highlighted in an exhibit at the Byron Forest Preserve District's Jarrett Prairie Center. Two actual fossil specimens, along with large-scale latex replicas, will be the centerpiece of the exhibit. The exhibit opened July 30, 1992, and will run through October.

Fossil specimens of the Tully Monster range in size from a few inches to around 20 inches in length. The overall appearance of the fossil based on scientific analysis is that it had a thick, soft body tapering to an elephant-like trunk with jaws at one end, to a flat, fin-shaped tail at the other.

The two fossils are on temporary loan to the district from Kurt and Ellen Laurent of Chana, Illinois. The change for the general public to view the actual fossil specimens is "a rare opportunity. The only known site in the world where the Tully Monster fossils are found comes from the coal stripmine area near Morris, Illinois. By consensus of the legislature in 1989, the Tully Monster became the official state fossil of Illinois.

The Jarrett Prairie Center is located at 7993 North River Road in Byron, Illinois. It is open Monday through Saturday from 8:30 AM to 4:30 PM and Sunday from 1 PM to 4:30 PM.

## **BUTTERFLIES**

RECIPES FOR BUTTERFLY GARDENS ARE AVAILABLE AT THE JARRETT PRAIRIE CENTER.

## **RELEASED!!**

In other news, we have released "Rocky and Bullwinkle", the pair of flying squirrels, back to their native habitat.

After being found in an attic in Oregon, the two squirrels have been on display at the Jarrett Prairie Center since winter.

As the squirrels' normal activity is nocturnal (active at night), they were not always available for viewing during the normal visiting hours of the center. Consequently, it was decided to offer them the freedom of the native oak savanna within the Byron Forest Preserve District's 450-acre "Prairie Preserve".

The pair has been checked recently and are doing very well.

## **GIFT SHOP FEATURES...**

Mr. Roy Keebler of Oregon, Illinois has been a woodcarver for about 15 years. What started as a hobby has turned into his profession. He is a retired band director and music teacher, having taught in Oregon schools for 25 years.

He is principally self-taught, but tries to study the works of other carvers and reads as much as he can to improve his skills. He doesn't specialize in just one area of carving, but likes to do birds, ducks, old world Santas, and Ozark people.

A variety of knives, gouges, and chisels are used to create each piece. A wood burner and acrylic paints are used to finish each carving. One of the questions most often asked is how long does it take to do a carving. A small carving may take from 2 to 3 hours, but a large carving like a duck may take 35 to 40 hours.

Mr. Keebler feels that woodcarving is a very enjoyable and unique hobby because no two carvings are exactly alike.

Please stop in the Jarrett Prairie Center Gift Shop to see some of Mr. Keebler's fine woodcarvings.

## **GOLF NEWS UPDATE**

The hole-in-ones assault continued in July on PrairieView's par 3's as clubhouse employee, Scott Liefheit recorded the second hole-in-one made on the fourth hole this year. Scott's first ace occurred approximately a month earlier on #13, the first day out using his newly purchased Ping Eye 2 Irons!! Unlike that first one which happened when he was playing along and was unofficial, Scott had the good fortune to have two playing partners along to witness the second one go in from a 180 yards out (the gold tees even!) with a #4 iron. What better argument to justify going out and buying a new set of clubs, two hole-in-ones in a month with the new irons!

Plans for our inaugural PrairieView Gold Medal Classic Golf Tournament on Saturday and Sunday, September 19-20 are complete. Announcement posters and entry forms are available. The tournament will feature both men's and women's divisions, two 18-hole rounds, one each day. Flighting will be by means of a blind draw after the first 27 holes. The blind draw will combine two out of the first three nine-hole scores to determine the tournament flights with a maximum of 20 players per flight and a minimum of 10. Make plans now to sign up as the entries will be limited to 110 players!!

Dennis Dunham has announced that an organizational meeting for the proposed PrairieView Golf Association will be held on Monday, August 31, 1992, at 6:30 PM at the Jarrett Prairie Center for all interested individuals. The purpose of the meeting is to initiate plans for the 1992-93 season for promoting regular men's and women's leagues, tournaments, junior golf activities, etc. Please make plans to attend this most important initial meeting, as Dennis would appreciate as much input from interested golfers as possible.

And finally, we really do appreciate your calls for information on current playing conditions, updated playday schedules, and reserving tee times on busy days (234-GOLF). We do want to make your visit to PrairieView Golf Course a very enjoyable one!!



## GOLF NOTES...

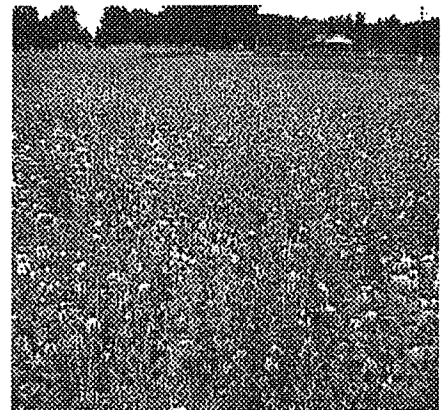
By Ken Ledene  
Clubhouse Mgr./PGA Pro

As our first season of operation at PrairieView moves quickly along through the final month of summer, we can reflect back on those dry, hot opening days in early May. Little did we know that "spring" weather would come months later in July, with cool days and abundance of rain. The frequent rains have not made happy golfers at times, but Steve Storz, our outstanding golf superintendent, was seen smiling alot, thankful for the ideal growing conditions.

At this point in the season, I would also like to compliment my very capable clubhouse staff including the cashiers, the concession personnel, the golf cart attendants, and the golf course rangers for a job well done. Our goal is to make your visit to PrairieView as pleasant and enjoyable as possible by offering a quality facility and courteous, friendly service both on and off the golf course. A friendly, encouraging smile offered by Ranger Ernie Pierceson, a sparkling golf cart delivered by Attendant Scott Leifheit, or a delicious sandwich prepared by concession person, Jan Snodgrass, are just a few of the services and staff you will find at PrairieView. And don't forget to call Jan or Karla on weekdays for a weekend reserve time or just to check on the current status of upcoming playdays or events. Both will be more than willing to answer all of your questions.

The range of services and facilities we offer at PrairieView continue to expand as we complete construction projects and respond to the needs of our patrons. Our food service and beverage selections have expanded over the past months as we now offer both pizza and hamburgers as alternatives to sandwiches. We also offer a much wider selection of beverages, both alcoholic and non-alcoholic, to be enjoyed on our newly carpeted clubhouse patio or on the golf course. Why not try a pitcher of draft beer while you replay all those what-if missed putts after your round?

The district has added a new huge 60'x30' tent available for both golf and non-golf related functions. (Pictured Below) At times, this tent, as well as a smaller one, will be set up in the clubhouse area. Soon to be completed will be two, new connecting classrooms in the lower level of the Jarrett Prairie Center that can be used as well for golf-related functions and dinners.



*Fields of gray coneflower at Prairie Preserve.*



*Charlie Holeyton and the Park Maintenance crew set up the tent at the North Shelter for a playday at PrairieView.*

## TURF NOTES...

BY STEVE STORZ, GOLF SUPERINTENDENT

The summer of '92 with its uncharacteristically cool, moist conditions has been an excellent one for turf grass establishment. At this time of year, normally we expect the roughs to be parched and the greens, tees, and fairways to be requiring thousands of gallons of irrigation water each night. Instead, we are mowing 100+ acres of lush, rapidly growing grass. Bare spots that I did not anticipate seeing 'turfed over' until late fall have already disappeared.

Although the rainy conditions have hindered soil-related work to some ex-

tent, much has been accomplished. Park maintenance cored and filled 47 sand traps since May, just recently completing the last one. Rockford Blacktop has finished an additional 1,000 feet of cart paths that began in late June. Besides much mowing and trimming, golf maintenance has been busy verticutting, topdressing, fertilizing, seeding, and fixing erosion areas on the greens, tees, and fairways.

With your continued support, PrairieView will soon become the fine golf course that we all expect it should be.

1992 PRAIRIEVIEW  
GOLD MEDAL GOLF TOURNAMENT  
- OVER \$3,500 IN PRIZES -

TOURNAMENT CHAMPION - PING "ZINGS" 3-9, P.W.

CHAMPIONSHIP FLIGHT (MEN) - LEATHER SUN MOUNTAIN BAG

A - MEN 1ST ECLIPSE SUN MOUNTAIN BAG  
B - MEN 1ST ECLIPSE SUN MOUNTAIN BAG  
C - MEN 1ST ECLIPSE SUN MOUNTAIN BAG  
D - MEN 1ST ECLIPSE SUN MOUNTAIN BAG

CHAMPIONSHIP FLIGHT (WOMEN) - ANACART SUN MOUNTAIN  
BAG & COVERS

A - WOMEN 1ST ECLIPSE SUN MOUNTAIN BAG

(7 FLIGHTS)  
2ND PLACE - 3 DOZEN GOLF BALLS  
3RD PLACE - PING STAINLESS STEEL PUTTER  
4TH PLACE - PRAIRIEVIEW LOGO SHIRT & CAP  
5TH PLACE - 1 DOZEN GOLF BALLS

MINIMUM - 10 GOLFERS PER FLIGHT  
MAXIMUM - 22 GOLFERS PER FLIGHT

**DEADLINE: SEPTEMBER 14, 1992**

- ENTRY FORM -

1992 PRAIRIEVIEW GOLD MEDAL CLASSIC  
SEPTEMBER 19-20, 1992

(PLEASE PRINT) NAME: \_\_\_\_\_ SEX: M F

ADDRESS: \_\_\_\_\_

TELEPHONE: HOME - \_\_\_\_\_ BUSINESS - \_\_\_\_\_

AGE: \_\_\_\_\_ APPROXIMATE HANDICAP \_\_\_\_\_ 18 HOLES (FOR PAIRINGS ONLY)

ENTRY FEE: Includes green fees, prizes, and tournament hat.

SEASON PASS HOLDER - \$30  
ALL OTHERS - \$50

PASS NUMBER \_\_\_\_\_  
DEADLINE: MONDAY, SEPT. 14, 1992  
No phone entries accepted  
Fees must accompany registration

CART RESERVE: \$5/per person per day

1ST DAY YES OR NO (circle)      2ND DAY YES OR NO (circle)

- MUST BE 17 YEARS OLD OR OLDER
- BACK NINE CARTS AVAILABLE FIRST COME FIRST SERVE BASIS
- WE RESERVE THE RIGHT TO MAKE ALL CART ASSIGNMENTS

OFFICIAL USE ONLY
TEE TIME: _____
STAFF INITIALS _____

I, THE UNDERSIGNED, UNDERSTAND THAT I ACCEPT THE RULES, REGULATIONS, AND DECISIONS MADE BY THE  
TOURNAMENT JUDGE.

SIGNATURE \_\_\_\_\_ DATE \_\_\_\_\_

# CALENDAR OF EVENTS

## September -

- 1 - Forest Preserve Board Meeting - Jarrett Prairie Center - 6:30 PM
- 5 - Hunter Safety Course - Jarrett Prairie Center - 9 AM-3:30 PM
- 12 - Hunter Safety Course - Jarrett Prairie Center - 9 AM-3:30 PM
- 12 - Specialty Screw Company Playday at PrairieView - Tee Times: 8:24-9:20 AM
- 12 - Sundstrand Playday at PrairieView - Tee Times: 10:08-11:20 AM
- 13 - Jonathan Knodle Memorial Tournament at PrairieView - 1-6 PM
- 15 - Forest Preserve Board Meeting - Jarrett Prairie Center - 6:30 PM
- 19 - J.S. Barnes Playday at PrairieView - Tee Times: 1:04-2:40 PM
- 19 - Gold Medal Golf Tournament at PrairieView - All Day
- 20 - Gold Medal Golf Tournament at Prairie View - All Day
- 24 - Rockford Register Star Playday at PrairieView - Tee Times: 1:04-1:44 PM

## October -

- 6 - Forest Preserve Board Meeting - Jarrett Prairie Center - 6:30 PM
- 20 - Forest Preserve Board Meeting - Jarrett Prairie Center - 6:30 PM
- 26 - Seniors - 50 and over Tournament at PrairieView - Tee Times: 9:36 AM-1:04 PM

**BYRON FOREST PRESERVE DISTRICT**  
**7993 N RIVER RD**  
**BYRON IL 61010**

**BULK RATE**  
**U S POSTAGE PAID**  
**BYRON IL 61010**  
**PERMIT NO 50**

**POSTAL PATRON**  
**BYRON IL 61010**



BYRON  
FOREST  
PRESERVE  
DISTRICT

# BYRON FOREST PRESERVE DISTRICT NEWS

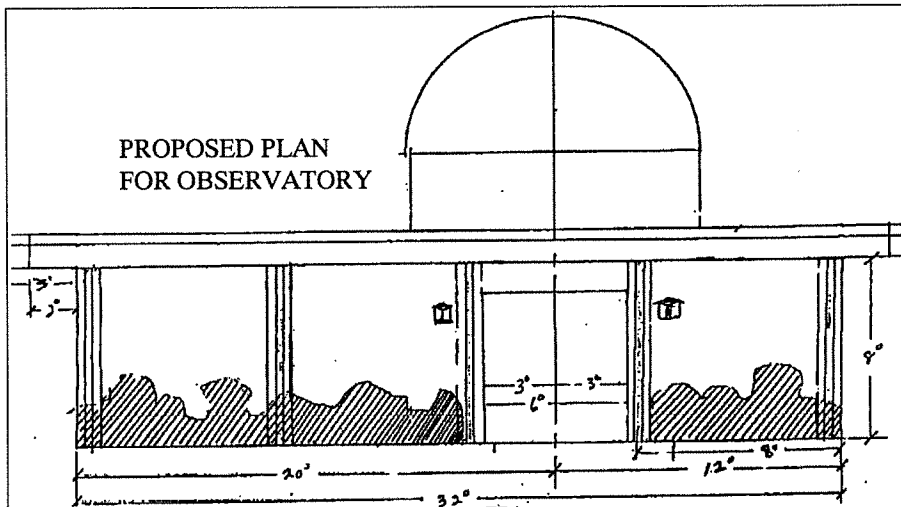
Winter 1992

## NEW OBSERVATORY UNDER CONSTRUCTION

**Have you heard** - the Prairie Preserve has received a donation of a fine Celestron telescope and a complete observatory from Dr. Jerome Weiskopf of Rockford. The Park Maintenance staff dismantled the observatory and it is currently being rebuilt east of the Jarrett Prairie Center.

The telescope is on display in the Jarrett Prairie Center.

Persons interested in being involved in this project should call the office. We expect that this should be an excellent opportunity for amateur astronomers to get a special look at the skies.



### THE PROFESSOR - SPECIAL REPORT

After taking a two-month leave from her luxury apartment in the Jarrett Prairie Center, The Professor, our resident fox snake, has returned to the museum. She seemed to be semi-hibernating as she did not eat for nearly two months.

When she continued to be uninterested in the mice that she usually loves, we checked with Very Smart People who suggested the installation of some additional heating. After several weeks with the warmer temperatures, she shed her skin on November 3, and immediately ate the mouse that had been her companion for the month of October. When she was offered another mouse a few days later, she ate it immediately.

Mr. Mike Eytalis installed locking hardware on her apartment and she is on display.

### SKY CALENDARS

Would you like to find Venus, Mars, Saturn, or Jupiter? The Sky Calendar shows you how to easily locate them in the sky.

The Abrams Planetarium Sky Calendars are on sale at the Jarrett Prairie Center Gift Shop for 50 cents.

### RAILROADS...

A donor has offered to provide model railroad equipment for a display depicting the early railroad in Byron. We are looking for information on the early railroad - depot, track layouts, pictures, plat maps, items railroad workers used, etc.

Byron was a major rail crossing at one time. Any information would help get this project underway. Call 234-8535.

### SEEDS - SEEDS

Some undisturbed native prairie exists at the Prairie Preserve. However, much of what will be the prairie preserve for future generations will come from restoration efforts. For this restoration, seeds of common native prairie plants are needed.

Seeds can be purchased, but they are very expensive and, many times, not truly native.

This year, over 30 residents, the Byron High School Natural Resources

Class, the Kishwaukee College Horticulture Club, and students from the Taft Field Campus, helped pick nearly 180 pounds of seeds. Those picked included Side Oats, Pale Purple Coneflower, Indian Grass, Purple Prairie Clover, Big and Little Bluestem, Compass Plant, and Rough Blazing Star. Much of this seed has already been planted. The balance will be planted in a field north of the Jarrett Prairie Center in the spring.



Byron Forest Preserve District &  
PrairieView Golf Course  
7993 N. River Road  
Byron, IL 61010  
Administrative Office: 234-8535  
Golf Course/Clubhouse: 234-GOLF  
FAX - (815) 234-4150

#### **BOARD OF COMMISSIONERS**

Dr. R.M. Jarrett, President  
Gene Paquet, Vice President  
Mike Eytalis, Secy/Treas.  
Gene Wilmarth, Commissioner  
Jim Jennings, Commissioner

#### **DISTRICT STAFF**

Jack F. Philbrick, Director  
Cathie Francis, Business Mgr.  
Robert Smith, Maint. Supt.

#### **MUSEUM & EDUCATION**

Michael (Mickey) Bowman,  
Deputy Director and  
Education Coordinator

#### **GOLF COURSE STAFF**

Steve Storz, Golf Course Supt.  
Ken Ledene, Clubhouse Mgr.  
Karla Coy, Assistant Manager

#### **OGLE TOP OPEN SPACE & PARK FOUNDATION**

Mario Bortoli, President  
Gene Wilmarth, Vice President  
Jack Philbrick, Secretary  
Pat Eytalis, Treasurer  
Dr. R.M. Jarrett, Director  
Jim Jennings, Director  
Gene Paquet, Director  
Mike Eytalis, Director  
Kathy Hamas, Director  
Don Hamer, Director

#### **HERITAGE FARM COMMITTEE**

Mike Eytalis, Chairman  
Jack Philbrick, Secretary  
Stew Norton  
Armour VanBriesen  
Helen Debnam  
Dr. R.M. Jarrett

## **JARRETT PRAIRIE CENTER NOTES...**

#### **ATTENDANCE**

It was interesting to note that visitors signing in on the Jarrett Prairie Center register in 1992 came from:

363 cities in the US  
35 different states  
15 foreign countries

#### **WILDFLOWER POSTAGE STAMPS**

For a limited time, the U.S. Post Office has sheets of 29 cent stamps of a variety of wildflowers. Many of these flowers may be found on our site. They are attractive and well done.

#### **1993 CHRISTMAS CRAFT SHOW**

Interested in participating in our 1993 Annual Christmas Craft Show? Contact Cathie Francis at (815) 234-8535 for more information.

#### **MEETING ROOMS AVAILABLE**

Beautiful meeting rooms are available in the Jarrett Prairie Center.

The multi-purpose room located upstairs has been used for wedding receptions, family reunions, birthday parties, conferences, and meetings. It will seat around 100 for a meal.

Downstairs, a larger room which will seat around 200 is ready. This room can be divided, and often, combinations of these rooms can be available for special needs of groups.

#### **CLOSED FOR HOLIDAYS**

The Byron Forest Preserve District facilities will be closed December 25, 1992, through January 3, 1993. Have a happy and safe holiday!!

#### **FROM THE DIRECTOR...**

## **WHERE ARE WE GOING... WHAT ARE WE DOING?**

This past year, the district has experienced rapid growth. Several new facilities have gone on line and new staffs have been trained to provide you the services these new facilities offer.

New things are happening in public management. After many years of self-inspection, it is apparent that the public wants the cost of services controlled, quality improved, and, in some cases, transferred or dropped.

This means that we, who provide public service, must learn to operate more efficiently, develop new methods of accountability, and implement new ways to contain costs while improving service.

It can't remain business as usual.

Your forest preserve district staff and board are committed to the goals of providing what you want and need.

Several steps are being taken to improve service. One is to provide 100% satisfaction. For example, if a fee is

charged, you will get a complete refund if you are forced to withdraw a reservation or drop out of a program. Several more are being developed. These include an extensive study of each new program to insure its cost of maintenance is not an increased burden on the residents through taxes unless it is something that the public demands.

Government services were originally developed because government was a way to provide for the individual the services that private business and individuals could not do for themselves. Today, this same guideline is true but the services may be changing and government must adjust their thinking.

In the coming months, the staff will submit a new drafted 10-year master plan to the board of commissioners. It will contain input from you. For this purpose, please take the time to complete any questionnaire you may receive. Please help, be a participant so this proposed plan fits your needs.

# LOOK...

## PROGRAMS IN '93

### JANUARY

MARQUETRY  
ASTRONOMY  
PILOT ORIENTEERING  
WINTER TREE  
IDENTIFICATION  
CROSS COUNTRY SKIING  
INSTRUCTION  
WOODCARVING SHOW  
SNOWMOBILE SAFETY  
WATER POWERED MILLS OF  
OGLE COUNTY

### FEBRUARY

ASTRONOMY  
HOME LANDSCAPING  
FLY TIEING FOR FISHING  
PESTICIDE USE FOR THE  
HOMEOWNER  
FOOD SERVICE SANITATION  
NELS AKERLUND'S TRIP  
DOWN THE MISSISSIPPI  
OPENING NEW BUFFALO EXHIBIT  
SPECIAL BUFFALO PROGRAM

### MARCH

MAPLE SYRUP MAKING  
SO YOU WANT TO PLAY GOLF  
ASTRONOMY  
BEEKEEPING AS A HOBBY  
THE AFRICAN BEE IN AMERICA  
PLANNING A PRODUCTIVE  
GARDEN THAT YOU CAN  
MANAGE  
BIRDHOUSES  
HOW TO BUILD THEM  
WHERE TO PLACE THEM  
PLANNING A NATURAL  
PRAIRIE GARDEN  
PLANNING A SPECIAL  
EVENT AT THE JARRETT  
CENTER  
ENERGY CONFERENCE  
LANDSCAPING TO ATTRACT  
BIRDS AND BUTTERFLIES  
BATS IN OGLE COUNTY  
BAT HOUSE BUILDING  
WORKSHOP  
FISHING THE ROCK RIVER FOR  
NORTHERN AND WALLEYES

### APRIL

JARRETT PRAIRIE WALKERS  
WALKING, HIKING, BACKPACKING  
SHOW  
FIRST BYRON VOLKSMARCH  
ASTRONOMY  
WHAT YOU NEED TO KNOW TO  
ESTABLISH A GOLF HANDICAP  
FLY FISHING CLASS  
CAREER DAY/FAIR  
A POND FOR YOUR YARD  
FOUNTAINS FOR YOUR HOME  
POND  
ECOLOGY FAIR  
HOW TO PLAN GOLF PLAY DAYS  
LYME DISEASE

### MAY

KITE DAY  
WILDFLOWER SYMPOSIUM  
TELEPHONE ETIQUETTE  
FALCONS - TRAINING OF HAWKS  
ASTRONOMY  
ADULT BEGINNERS GOLF CLINIC  
FISHING THE ROCK RIVER  
LOG HOME CONSTRUCTION  
TRAVELING TALONS  
EFFECTIVE HOME LAWN CARE  
BLUEBIRD CONFERENCE AND  
WORKSHOP

### JUNE

ASTRONOMY  
SUMMER TREE  
IDENTIFICATION  
FISHING THE ROCK RIVER IN  
THE SUMMER  
CARING FOR HURT ANIMALS  
INSECTS OF THE JARRETT  
PRAIRIE  
MUSIC IN THE PARK  
GOLF TRICK SHOW

### JULY

ASTRONOMY  
WHAT TO DO WITH YOUR CARP  
AND SUCKERS  
HOW HEALTHY IS THE ROCK  
RIVER  
HARMONICA FESTIVAL  
MUSIC IN THE PARK

### AUGUST

ASTRONOMY  
ARCHERY  
MUSIC IN THE PARK  
INTRODUCTION TO SKEET  
SHOOTING  
ANNUAL FITNESS CHECKUP

### SEPTEMBER

ASTRONOMY  
FALL FISHING ADVENTURES  
WOODCARVING SHOW  
FALL FOSSIL EXPEDITION  
HUNTER SAFETY CLASS  
SOLAR GREENHOUSE  
SEMINAR  
POLLEN/SNEEZEWEED -  
WHAT MAKES US SNEEZE

### OCTOBER

PRAIRIE SEED COLLECTION  
BUILDING SQUIRREL  
FEEDERS  
BUILDING COMMERCIAL  
CHRISTMAS EXHIBITS  
FEEDING SQUIRRELS  
ASTRONOMY  
CHILI COOKOFF  
FALL FESTIVAL  
AUDUBON BIRDSEED SALE  
FLOWER ARRANGING  
PRUNING FOR HOMEOWNERS  
SENIOR CITIZEN TRIP TO  
MORTON ARBORETUM  
APPLE CIDER MAKING  
HALLOWEEN ON THE  
PRAIRIE

### NOVEMBER

ASTRONOMY  
MAKING GREAT HOMEMADE  
APPLE PIES  
SENIOR CITIZEN TRIP TO THE  
MILWAUKEE DOMES  
FISHING ADVENTURES OF THE  
PAST SUMMER - FISH FRY  
WILD TURKEYS IN OGLE  
COUNTY

### DECEMBER

ASTRONOMY  
CHRISTMAS CRAFT SHOW &  
CHRISTMAS WALK  
CHRISTMAS LIGHTS ON THE  
PRAIRIE

**FOR FURTHER INFORMATION - CALL (815) 234-8535**

## FRIENDS OF THE JARRETT PRAIRIE

There are a large number of activities and programs in the planning stages. In order to really be effective, it takes people to work with small groups, to follow up on projects, and to help in a wide variety of ways.

Some of the specific areas that we would like to proceed on include the following:

**Bees** - we have an observation bee hive and bee keeping equipment. The schools have expressed an interest in activities with bees. We need someone who is knowledgeable in the handling of bees and in managing bee hives.

**Cub Scouts** - There are some of the requirements, electives, and achievements that can be done at the Jarrett Prairie Center. We would like to plan a series of programs on specific scouting requirements. There are many opportunities for similar activities with other scouting groups.

**Astronomy** - The completion of the observatory will provide many interesting opportunities for helping with getting good and full use out of the equipment.

**Maple Syrup** - We are considering setting up a maple tree sap collection program and a maple syrup cooker.

**Bird Houses** - that have served well, are in the barn needing repair and they need to be set out prior to the spring nesting season. Originally, the first bird houses were set out by Byron resident, Clyde James, in an effort to bring bluebirds back to the Prairie Preserve. It worked. Bluebirds could be seen on any day through the summer months.

There are a large number of special projects that could be done, and special interests that could be pursued. There will never be enough paid staff to pursue all of the great ideas people bring in, but a strong volunteer program can really make a lot of things happen.

If any of these ideas are of special interest or if you would just like to be of service, please call 234-8535, Monday through Saturday from 8:30AM-4:30PM.

## TURF NOTES . . .

By Steve Storz, Golf Course Superintendent

This fall, the golf maintenance crew worked on several course improvements.

Scarifying, topdressing, leveling, and seeding areas in the rough were primary goals. The crew staked fiber mats in erosion areas and applied either straw or hydromulch after seeding. A total of 1.2 tons of seed, 400 bales of combined wood fiber mulch and straw, and 60,000 square feet of erosion blankets were used.

As you may know, PrairieView has very little top soil. After months of investigation, an aerator was purchased that could stand up to PrairieView's rocky soil composition. It pounded holes in 38 acres of fairways, tees, and green approaches.

The crew planted one hundred trees on the front nine using the district's

hydraulic tree spade. This is the first planting for the implementation of PrairieView's Beautification Master Plan designed by Architect Jim Spear.

Maintenance crews installed irrigation for our new bluegrass nursery, expanded tee irrigation, and continued construction for a larger bent grass nursery.

During the next few weeks, crews are sodding washes on the bent grass fairways. This will stop when the ground freezes. Next, they will finish pruning and thinning the wooded areas of PrairieView.

PrairieView is well on its way to becoming an excellent golf facility.

We at the Byron Forest Preserve District look forward to continued progress in all aspects of its development in 1993.

## WATCH FOR OUR NEW EXHIBITS!!

**RED TAILED HAWK** - mounted on a fencepost gazes down on likely prey in the Jarrett Prairie Center.

Exhibits in progress include:

The extensive **BARBED WIRE COLLECTION** donated by Oregon resident, HOWARD FOX. The interpretive materials are being researched and assembled. The exhibit should be done by the first of the year.

A mounted **BUFFALO** has been prepared by Mr. Jim Hess. The interpretive material for this is being researched and assembled.

A collection and display of **NATIVE WOODS** is being pulled together to go along with the popular Redwood log on display in the Jarrett Prairie Center.

## CLUBHOUSE NOTES . . .

### NEW ASSISTANT MANAGER

The Byron Forest Preserve District and, more directly, PrairieView Golf Course are pleased to announce the promotion and appointment of Karla A. Coy to the position of Assistant Clubhouse Manager. On staff since last June, Ms. Coy's position will include responsibility for coordinating all district food service events, as well as to assist in managing, training of staff, and overall involvement in all clubhouse functions. With eight year's previous experience at Oregon Golf Club, Karla's friendly demeanor and helpfulness in assisting golfers have been much appreciated this season.

### CLUBHOUSE POSITIONS AVAILABLE

Anyone wishing to apply for a clubhouse position for the coming 1993 season, applications will be accepted after the first of the new year and interviews will take place in February and March.

Happy Holidays and a joyous **NEW YEAR!!** Here's looking forward to a successful, enjoyable 1993 golf season at PrairieView Golf Course!!

### LOST AND FOUND

Several lost items have been turned in and lay unclaimed this past season. If you wish to claim a lost item, please call 234-GOLF.

## PRAIRIEVIEW GETS SLOPE RATED

Beginning with the 1993 golf season, PrairieView will offer a USGA Handicap System with "slope" ratings for those desiring to establish a golf handicap. A golf handicap with the new "slope" system allows players to receive more strokes on a difficult course and fewer strokes on an easier course during a match or competition. The USGA's innovation to handicap rating considers 14 factors in determining the difficulty of a course and is based on the scores of a bogey golfer as well as a scratch golfer.

Ratings are as follows:

Hole	White	Gold	Red
1	386	424	350
2	506	534	457
3	310	340	266
4	143	181	108
5	338	370	299
6	512	540	474
7	416	441	389
8	174	200	131
9	372	402	335

FRONT NINE TOTALS  
3157 3432 2809

Hole	White	Gold	Red
10	401	439	359
11	485	512	440
12	330	349	307
13	144	180	110
14	331	379	297
15	522	544	495
16	417	459	378
17	180	208	137
18	358	391	326

BACK NINE TOTALS  
3168 3461 2849

18-HOLE TOTALS  
6325 6893 5658

	COURSE RATING	SLOPE
MEN WHITE:	69.4	117
MEN BLUE:	70.6	119
MEN GOLD:	72.3	123
MEN GRAY:	67.7	112
WOMEN RED:	71.6	117
WOMEN GRAY:	73.3	121

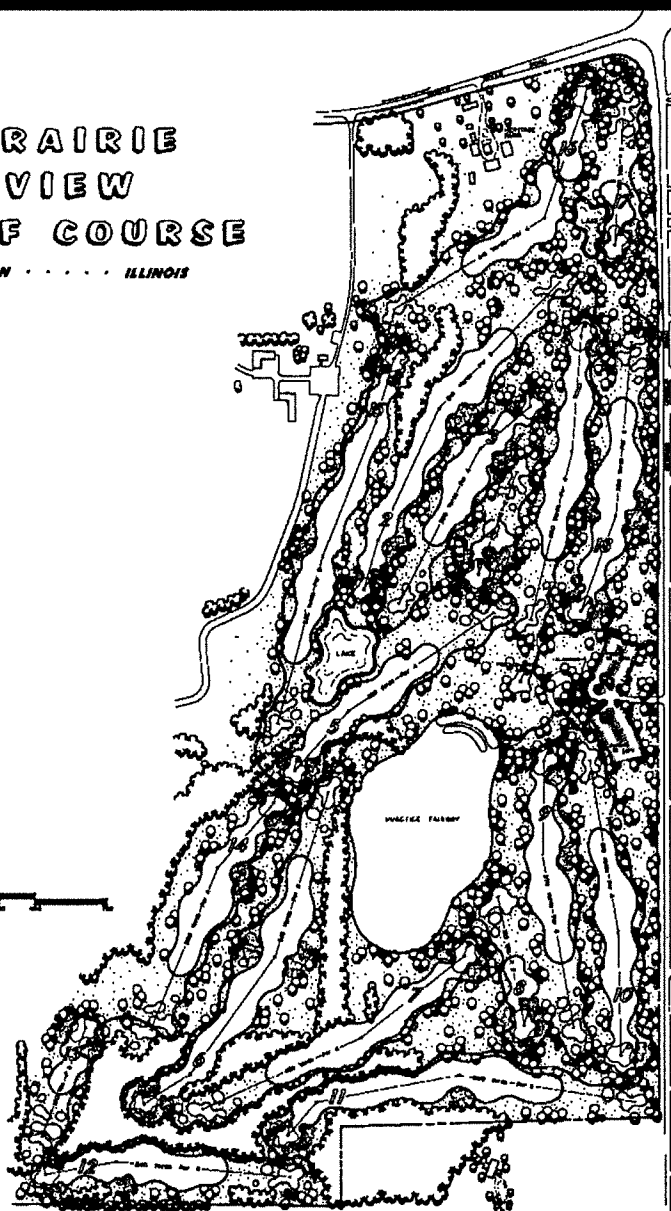
## PRAIRIEVIEW REALIGNMENT

New for 1993, PrairieView golfers will be presented with a realignment of the existing 18 holes. The improvement creates better balance between the old front and back nine. This will improve control of play by making the existing hole #18 into the new hole #9.

Pictured right is the new layout of PrairieView.

## PRAIRIE VIEW GOLF COURSE

BYRON . . . . . ILLINOIS



## ARE YOU ENVIRONMENTALLY CONSCIOUS?

Many gardeners have practiced environmentally sound gardening for years even though they may not have thought of it as such. Perhaps you are among them. According to the American Association of Nurserymen, you fit this category if:

1. You plant trees and shrubs.
2. Watch the consumption of water in your gardening.
3. Use pesticides and fertilizers judiciously.

Gardeners are special people, in touch with the beauty of nature and eager to help "green up" their communities.

The benefits of all this planting are many. For example, trees clean the air and reduce soil and water erosion. Trees, plants, and shrubs also provide a safe oasis for wildlife of all types from songbirds and squirrels to rabbits and deer.

You are an environmentally conscious gardener if you try to conserve on water use. Fortunately, this is not difficult, given the abundance of low water demand of plants available today and the ease with which gardeners can observe the basic rules of wise watering.

For instance, many gardeners use a soil probe to determine if their lawn or garden is truly in need of water. This way, they refrain from watering simply out of habit or by change.

Today's environmentally aware gardener follows good cultural practices to ward off unwanted pests. Many gardeners seek advice from their local garden center or Extension office, learning how to introduce a pest's natural predators to rid their garden of a

particular insect without using chemicals or sprays. Others use B.T., an organic insect control, or other non-chemical "home remedies" such as crushed egg shells or stale beer to stop slugs.

With the current emphasis on environmental awareness, isn't it nice to know that you are doing your part to contribute to the health and beauty of the world around you?

- Dr. Leonard Perry, Horticulturist  
University of Vermont

## RANGER RICK

The Ranger Rick Club is on the move!! If you are wondering what Ranger Rick is, it is an education club of the Wildlife Federation (this club is sponsored by the Byron Forest Preserve District) for fourth through sixth grade boys and girls.

In September, we did some outdoor cooking and learned about the prairie and picked prairie seeds.

In October, Ranger Rick toured a waste water treatment plant and learned that they are not all yuck, a lot of good come from them.

November brought a trip to Shedd Aquarium. This was not your usual trip because the club didn't have time to see many of the displays. Instead, they learned how they filter their tanks, plan their exhibits (we even got to view one in the building process), and go back "behind the scenes". After the aquarium, they saw a film at Alder Planetarium.

If this sounds like things you would like to do, there is still registration space. For more information, call the Byron Forest Preserve District at (815) 234-8535.

**BYRON FOREST PRESERVE DISTRICT  
7993 N RIVER RD  
BYRON IL 61010**

**BULK RATE  
U S POSTAGE PAID  
BYRON IL 61010  
PERMIT NO 50**

**POSTAL PATRON  
BYRON IL 61010**