

# Byron Panorama

A Publication of the Byron Governmental Agencies

Spring/Summer 1998

## Chamber of Commerce Announces ByronFest Dates - July 10, 11 & 12, 1998 ByronFest Advance Buttons Sales

ByronFest will be here soon... July 10, 11 & 12, 1998. The steering committee has been hard at work for the last seven months planning and organizing this fine festival. Buttons are required for admission, and again we will have an advance sale price. Buttons bought in advance will be \$2.00 for people six years and older. (Five and under are free.) These buttons will be available in mid-June at locations throughout Byron. The rate for buttons purchased at the gate will be \$4.00. Be sure to buy your buttons in advance.... read your local paper or call the Byron Chamber Office for sale locations of advance buttons.

## Volunteers needed for ByronFest

ByronFest attracts over 30,000 people to our community over a three-day period. The Chamber is pleased to have an abundance of 300 volunteers working the festival. The festival would not be as successful without all the volunteer help. We need people to sell buttons, tickets, and beverages. Volunteers can assist with our crowd control and security personnel that is so vital to our festival. People are needed also in the office located in the fire station to answer phone calls and other activities. This is just a short list of needs - if you are interested, please call, and we will find a place for you .... no one will be turned away. We are so fortunate to have so many volunteers, and we are thankful for all your time and energy spent to make this a wonderful festival to showcase our community to the area. To volunteer, please call the Byron Chamber of Commerce at 234-5500.

## Awards Given at Byron Chamber of Commerce Annual Dinner

The Byron Chamber of Commerce gave three distinguished awards at the Annual Dinner for leadership in our community. The Executive committee had many applicants, and the decision was difficult to make. Below are the 1998 winners of the Byron Chamber of Commerce awards. We thank all who took time to write nominations.

### Progress Award

This was a onetime award for the following: Commonwealth Edison and the Ogle County Intergovernmental Board

This recognition was for all the work involved in bringing resolution to the tax assessment issue for our community. In February, the issue was resolved by the negotiating team from both parties. The following individuals have worked tirelessly to come to an agreement for the betterment of our community: Paul Callighan, Rudy Wolfe, and Jim Buen for Commonwealth Edison; Karl Jacobs, Jim Grove, Chrissie Martin and Bill Young for the Ogle County Intergovernmental Board.

The hours, research, and study that these individuals gave to this decision should be commended. We are so fortunate to have these leaders working for our community and willing to give above and beyond 110% for the community and quality of life here. Our hats are off to you and to your families for allowing you to serve the needs of this community.

#### SPECIAL THANKS

To All Our Volunteers in the Community!  
April 19th - 25th  
National Volunteer Week

### Citizen of the Year

Dan Danielowski

Dan has contributed greatly to the betterment of the Byron Community both as a volunteer and a dedicated family man.

Dan was instrumental in bringing the highly successful Community Theater to Byron. Dan saw a void in the community and organized a group of people to bring theatre to the town. This has brought Byron into the spotlight of the state's art community and has brought hundreds of new patrons to Byron area businesses. Dan gives countless hours to this organization, all on a volunteer basis. In addition to that feat, for the past three years, Dan has arranged and coordinated all the entertainment at ByronFest. This is a tireless job that includes researching, interviewing, and listening to tapes and videos of countless bands all year long. If that is not enough, Dan is active in his church, All Saints Lutheran, providing entertainment and special music on a regular basis.

Dan and his wife Julie have a blended family of five children plus five children they recently officially adopted. After providing foster care to two sisters, they decided to adopt them as well as their three

Continued from page 2

## ByronFest '98

A Great Place  
A Great Festival

Live Entertainment on  
Two Stages on  
Friday & Saturday Nights

Here is what you'll enjoy:

Classic Car Show  
Carnival  
Beer Garden  
Taste of Byron  
Men's Softball Tournament  
Sidewalk Sales Craft Show  
Hoops 3-on-3 Basketball  
Quilt Show  
Parade  
Fun Run and ...

## Host Families Needed

The Center for Cultural Interchange is in the process of placing foreign exchange students for the 1998-99 school year. We are in need of host families for these students. If you would be interested in hosting a student for the academic school year or for one semester, please contact our office at the following numbers:

Area Representative,  
Ken McMillin 815-226-8870

Center for Cultural Interchange,  
Main Office in St. Charles 630-377-2272



### Inside this issue . . .

Byron Chamber of Commerce .....	1
Fire Protection District .....	2,3
Forest Preserve .....	4-11
Park District .....	12-15
Public Library .....	16,17
School District .....	20-24





## Byron Forest Preserve News

7993 North River Road, Byron (815) 234-8535

Preservation • Education • Recreation



### Summer Day Camps

The Byron Forest Preserve is offering summer day camps this year which will be focused on fun. Children ages 6-12 will discover fossils, watch baby bluebirds, pet a snake, swing on a vine, make musical instruments from recycled materials, go swimming weekly, go on special weekly field trips, and enjoy a family night with a hot dog cookout while looking at the stars in the observatory!

The camps will be held the following dates and times:

- |                   |   |
|-------------------|---|
| <b>Session #1</b> | Mon.-Fri. - 9 am-4 pm - June 8-19 - \$130<br>Latchkey Care - 7-9 am - June 8-19 - \$20<br>Latchkey Care - 4-6 pm - June 8-19 - \$20                   |
| <b>Session #2</b> | Mon.-Fri. - 9 am-4 pm - June 22-July 2* - \$117<br>Latchkey Care - 7-9 am - June 22-July 2* - \$18<br>Latchkey Care - 4-6 pm - June 22-July 2* - \$18 |
| <b>Session #3</b> | Mon.-Fri. - 9 am-4 pm - July 6-17 - \$130<br>Latchkey Care - 7-9 am - July 6-17 - \$20<br>Latchkey Care - 4-6 pm - July 6-17 - \$20                   |
| <b>Session #4</b> | Mon.-Fri. - 9 am-4 pm - July 20-31 - \$130<br>Latchkey Care - 7-9 am - July 20-31 - \$20<br>Latchkey Care - 4-6 pm - July 20-31 - \$20                |

\* There will be no camp on July 3rd.

Easy payment plan options are available. These camps will be held at the Jarrett Prairie Center located at 7993 North River Road in Byron. For more information, please call 815-234-8535.

### Adventure Club



Left, clockwise: Ross Bushnell, Jordan Feste, Jennifer Mueller, and Madeline Larson create lions!



### Fun...Fun...Fun!!

Adventure Club Camp is an outdoor club for ages 3-5. Youngsters get to explore the outdoors through hands-on activities. Kids will be able to run through the prairie and explore the woods, using arts and crafts to express their talents and feelings. The camps will be held the following dates and times:

#### Camp #1 - Crazy About Critters!



Mon. & Wed. - 9-11 am - June 8, 10, 15, & 17 - \$25  
Tues. & Thurs. - 9-11 am - June 9, 11, 16 & 18 - \$25  
Tues. & Thurs. - 1-3 pm - June 9, 11, 16, & 18 - \$25

#### Camp #2 - Down on the Farm

Mon. & Wed. - 9-11 am - June 22, 24, 29, & July 1 - \$25  
Tues. & Thurs. - 9-11 am - June 23, 25, 30, & July 2 - \$25  
Tues. & Thurs. - 1-3 pm - June 23, 25, 30, & July 2 - \$25



#### Camp #3 - Squishy-Squashy, Damp & Mushy



Mon. & Wed. - 9-11 am - July 6, 8, 13, & 15 - \$25  
Tues. & Thurs. - 9-11 am - July 7, 9, 14, & 16 - \$25  
Tues. & Thurs. - 1-3 pm - July 7, 9, 14, & 16 - \$25

#### Camp #4 - Under the Sea



Mon. & Wed. - 9-11 am - July 20, 22, 27, & 29 - \$25  
Tues. & Thurs. - 9-11 am - July 21, 23, 28, & 30 - \$25  
Tues. & Thurs. - 1-3 pm - July 21, 23, 28, & 30 - \$25

These camps will be held at the Jarrett Prairie Center located at 7993 North River Road in Byron. For more information or to register, call 815-234-8535.

Summer Day and  
Adventure Camps  
Experience - Memories  
That Last a Lifetime!





## Star Notes

May is here with warmer weather and a later setting sun. Now dropping into the west, Gemini prepares to bid us farewell until next November. Hercules, the strong man, makes his return to the evening skies and so does Vega, the first of the summer triangle stars. This is a good time of year for galaxy hunting. The area between Ursa Major, Virgo, and Leo abounds in deep sky objects if the sky is dark, clear, and calm and the hunters are patient.

In June, Bootes the herdsman, rides high in the sky, flying like a kite with the bright star Arcturus for a tail. Nearby Hercules holds the bright globular cluster, M13. The Serpent Bearer, Ophiucus, rises in the east, bisecting the constellation Serpens. Leo and Virgo grace the southwest while Ursa Major rides high in the northwest. These three constellations lead us to galaxies with names like Pinwheel, Whirlpool, and Sombrero.

July, named after Julius Cesar, abounds in nebula. With names like Triffid, Lagoon, Ring, and Dumbbell, they conjure up visions of far away mysteries. Three bright stars rise high in the East. They are Altair, Deneb, and Vega, sometimes called the Summer Triangle. Each holds a place in its own constellation and points the way to hidden wonders.

In August, Jupiter is back! After many months without any good evening planets, we welcome the largest planet in our solar system back to the evening skies. Jupiter, with its cloud bands and dance of moons, is a welcomed sight. But don't spend all night there; Sagittarius and Scorpio lead our eyes into the center of our galaxy. Here, star clouds and nebula abound, and the Milky Way is easy to see.

Public viewing nights are on the first and third Saturdays and second and fourth Tuesdays of each month. The Weiskopf Observatory is closed if it is cloudy. Please call (815)-234-8535 to confirm viewing conditions. Sessions start about dusk and last until about 10 pm and are free. Please dress for the weather as the dome is not heated.

The Weiskopf Observatory is also available for private tours. The program includes fun and interesting activities relating to constellations, the Solar system, stars and star movements, telescopes and constellation myths. The cost is \$2 per person. Tours can be arranged by calling Lisa at 234-8535, ext. 232.

## Gift Shop News

The gift shop at the Jarrett Prairie Center has new items arriving daily. There are many gift ideas for children's birthdays, holidays, and any other occasion. Some gift specials are already wrapped!

The Bluebird houses, bat houses, Ladybug houses, Painted Butterfly houses, and Wren houses are handcrafted by the volunteers at the Jarrett Prairie Center.

New additions to the gift shop include puppets, candles, and many new books. These would make great gifts!

Gift shop specials include \$5 off *Illinois-Seasons of Light* book, '98 *Illinois* calendars reduced to \$5.50, select books are 50% off, and if you mention this article, you get an additional 10% off any \$10 or more purchase.

Be sure to visit the Jarrett Prairie Center's gift shop for your next special gift need!



## Earth Day Tree and Shrub Giveaway



The Byron Forest Preserve, in conjunction with the Northern Illinois University Outdoor Campus Recreation and the State of Illinois, hosted a tree and shrub giveaway recently.

The Byron Forest Preserve receives approximately 5,000 trees and shrubs annually some time during Earth Week. Ashley Sweda of NIU writes the grant. Then it is sent to the state nursery.

The trees and shrubs vary from year to year on the types and variety. The species are chosen to help the environment in one way or another. It may be the berries for birds or for erosion protection. If you wish to get trees next year, please keep the Forest Preserve in mind next April.

Pictured left: New Prairie Restoration Assistant Jenna Sanders distributes free trees and shrubs to the public.

## Museum Metamorphosis - Phase IV

Work on the new wetland display is proceeding, although slowly. Staff members Lisa Johnson and Laurie Conner have been spraying foam insulation and mixing up fake mud to create a mud bank complete with Beaver and Muskrat Dens. What a mess (pictured right)!

Volunteer Taxidermist Jim Hess has completed several fish and an otter which will be swimming in the fake water. As we finish off the base, we will start placing the animals.

The final step will be placing the plexiglass cover piece and treating it to look like water. When finished, this display will show the kinds of animals that inhabit a wetland area.

Despite supposedly being protected, these habitats are quickly disappearing due to development. Many of these animals may become increasingly rare in the future.



Save the Earth...





## A Note from the Naturalist

By Todd Tucker, Naturalist  
*Burning the Prairie*

Well, we have been very busy on the prairie with land management. Some of you may need to be updated on what has been going on. Some of you, unfortunately, may have seen the smoke a bit closer than you would have liked to.

Please accept my apologies if you were affected by the smokey conditions. When I started the prairie burn that day, I assure you that the wind direction was not moving in the direction of the community, but as the day and the burn progressed, the wind shifted and was moving due north. I am sorry if this inconvenienced anyone but I assure you, your suffering did not go without good cause.

We were very lucky to have gotten such a large and good burn. We have had poor luck with the weather in the past couple of years and the last burn was during the fall of 1996. The time to burn is not as easy as it may seem. There are quite a few factors that need to be just so before a burn can be conducted.

- Temperatures between 40 and 75 degrees
- Humidity between 25 and 60 percent
- Winds between 3 and 15 m.p.h.
- Ground moisture as low as possible

As you can see, the combination of these items can be quite difficult to obtain all at the same time. We were most fortunate to conduct the burn we did. Since that time, we have had a considerable amount of rain. The other factor which is not accommodating for the most part is the wind. It often is a great day to burn except for the constant wind which we receive throughout the year.

You may be asking why it is necessary to burn. Almost any areas that have a trace of prairie will benefit from fire, because fire discourages Eurasian plants and stimulates growth of prairie plants. The European plants take over the natural plant communities and can cause the prairie to become choked out. These European species are not fire tolerant and will not survive fire as a long-term management tool. Fire as a management tool can be very helpful but can also be very dangerous. I would like to warn everyone that a burn should only be conducted by properly trained individuals who have been trained for burning prairies and have the proper safety equipment. You also have to obtain burning permits from the EPA (Environmental Protection Agency).

## Want to be a Wild One?

The Byron Forest Preserve currently sponsors the Rock River Chapter of the Wild Ones Natural Landscaping Club. This is a group of people who is interested in landscaping with native plants.

Native plants are adapted to local weather and soil conditions and require less maintenance, chemicals, and water than exotic species. They also provide food and habitat for wildlife such as many beautiful birds and butterflies.

Programs and field trips are geared toward learning about native plants, what they look like and how to grow them, as well as sources for seeds and plants. The following meetings have been scheduled:

- |           |   |
|-----------|---|
| May 21    | Woodland Walk and Slide Show - 6:30 - 8:30 pm at Severson Dells Environmental Center. |
| June 18   | Plant sale at Ender's Greenhouse - 6:30-8:30 pm.                                      |
| July 16   | Insects of the Prairie - 6:30-8:30 pm at Severson Dells Environmental Center.         |
| August 20 | Prairie Walk - 6:30-8:30 pm. Location to be announced.                                |

So, if you want to be a Wild One, please call Lisa at 815-234-8535 ext. 232.

## Crafters Needed!!

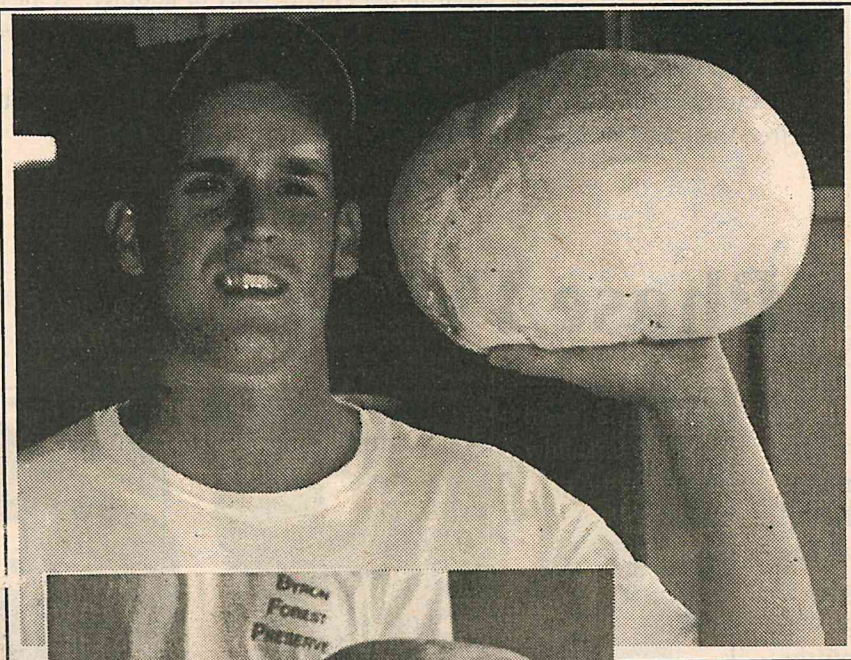


The Byron Forest Preserve is looking for people interested in selling their hand-made crafts and unique items at the Seventh Annual Craft Show.

The craft show is held at the Jarrett Prairie Center and offers over 35 exhibitors with a wide variety of unique crafts.

If you are interested in reserving a booth at the Seventh Annual Craft Show, call Robin at 815-234-8535 ext. 200.

## Come and join the "Wild Ones"



## Giant Puffballs (Calvatia Gigantea)

By Todd Tucker, Naturalist

These are some of the largest mushrooms found in North America, as you can see. The Giant Puffball is a fairly common occurrence at the Forest Preserve and can be found in the late summer and early fall.

They grow within the wooded area and are scattered away from other mushrooms of their kind. They are egg white in color turning to a dingy tan to brown. The skin is quite smooth with a leather feel. The spores are incased within the mushroom's skin.

As the picture indicates, they are quite large measuring 20 to 50 centimeters across. It is much larger than my head, and I have a really big melon.

The Giant Puffball is edible and tastes better earlier compared to later in the season. Warning! Every single edible mushroom can and will affect everyone differently. Even when properly cooked, some mushrooms that can be eaten safely

by many people can nonetheless trigger a toxic reaction in a sensitive individual. I would encourage everyone not to try eating a mushroom that has not been positively identified. The outcome could be fatal.

I would also like to remind the public once again that it is illegal to pick anything from the Illinois Nature Preserve dedicated lands. We at the Byron Forest Preserve have 300 acres of the land in this protection. That 300 acres encompasses all of our woods and prairie with the only exception being the two farm fields located north along Whitaker Road. Please do not pick anything natural from the site. The land is protected so that future generations can also enjoy the beauty.



~ Programs ~

Secrets of the Night Sky

Ever wonder how the constellations got their names? Would you like to buy a telescope, but don't know what to look for? How about showing your kids the wonders of the universe? Then these programs are for you. Register now!

**May 19 - Spring Constellations**  
*Cancer, Leo, Hydra, Virgo, Corvus, Crater - Who are they, what do they look like, what are their stories, how to find them.*

**June 16 - Telescopes**  
*Different types: refractor, reflector, catadioptric  
Different mounts: alt/azimuth, dobsonian, equatorial -  
How do they work.*

**July 21 - Late Spring Constellations**  
*Bootes, Hercules, Corona Borealis, Ophiucus - Who are they, what do they look like, what are their stories, how to find them.*

**August 18 - Center of the Galaxy-Nebula**  
*Lagoon, Triffid, Ring, Dumbbell, Omega - What are nebula, different types of nebula.*

**September 15 - Summer Constellations**  
*Aquila, Lyra, Cygnus, Scorpio, Sagittarius - Who are they, what do they look like, what are their stories, how to find them.*

**October 20 - Planets**  
*What is a planet, how was it formed, different types of planets, how does the solar system work.*

**November 17 - Fall Constellations**  
*Pegasus, Andromeda, Perseus, Cassiopeia, Cepheus - Who are they, what do they look like, what are their stories, how to find them.*

Day: Tuesdays  
Time: 6:30-8 pm  
Location: Weiskopf Observatory  
Fee: \$2 per person - \$10 family max.  
Dates: Listed above  
Age: 5 years and up  
Min/Max: 3/20  
(Guarantee your spot; register now!)

Stepping Out

The Prairie Preserve presents an ever-changing palette of life and color. Join us for an opportunity to experience the great outdoors.

Take an easy walk through the prairies and savanna of the Prairie Preserve to look for and learn to identify resident and migratory birds and early spring wildflowers.

Warm clothes, comfortable walking shoes/boots, and binoculars are recommended. Call (815) 234-8535 to register.

Days: Saturdays  
Time: 8-10am  
Location: Jarrett Prairie Center  
Fee: Free  
Dates: May 30, June 13, & July 11  
Min/Max: 3/20

Creative Memories

Safe and creative photo albums. Are your photos not being displayed or enjoyed because they are gathering dust in shoeboxes...or worse, are they being stored in albums that are destroying the images they should be protecting? Come and learn how to put together creative, long-lasting family photo albums-the kind of albums that safeguard their memories and provide enjoyment for generations to come. With Mother's Day, Father's Day, graduations, and weddings approaching, an album about those special people would make a unique and special gift they will enjoy for years to come. To register, call 815-234-8535.

**Beginners' Classes**  
Location: Jarrett Prairie Center  
Day: Saturday  
Time: 9 am-4 pm  
Fee: \$20  
Date: May 30  
Min/Max: 8/20

**Continuing Classes**  
Location: Jarrett Prairie Center  
Day: Saturday  
Time: 9 am-4 pm  
Fee: \$15  
Date: May 30  
Min/Max: 8/20

Basketweaving

Come and make your own seasonal baskets for adult beginners and up. Fee includes all supplies. A few small tools from home will be needed. Baskets to be made will be on display at the Jarrett Prairie Center Gift Shop two weeks prior to the class. To register, call 815-234-8535.

Basket: Divided Gardener's Tote (12x12")  
Days: Mondays  
Time: 7-9 pm  
Location: Jarrett Prairie Center  
Fee: \$35  
Dates: June 8 & 15  
Min/Max: 5/12

There will be no summer basketweaving classes, so please watch for upcoming fall classes!

Aerobics

This is a fat-burning, steady state workout that uses step height and arm movements to set your aerobic intensity.

Days: Mon., Wed., & Thurs.  
Time: 9:30-10:30am  
Location: Jarrett Prairie Center  
Co-sponsored by Byron Park District. Please see their section for more details.

New Face



Jenna

My name is Jenna Sanders, and I am the new full-time prairie restoration worker at the Byron Forest Preserve. I graduated from Northern Illinois University in May of 1997 with a bachelor's degree in Biology.

The first experience in prairie restoration that I received was through a co-op at The Nature Conservancy's Nachusa Grasslands during my senior year. I enjoyed the work so much that I took a four-month internship there the summer after graduation. Unfortunately, that job was over too soon, and to pay the bills I began waitressing in DeKalb.

My lease is up in August, and then I plan to move out to this area. This position is a wonderful opportunity for me, and I was thrilled to accept it. I look forward to a productive summer, and am sure that I will truly love the work here as much as I have before.

Art Shows at Jarrett Prairie Center

**Joel Bowling, Prehistoric American Artifacts**  
June 6-29  
Reception - June 21, 2-3 pm

**Elizabeth Foster, Nature Photographer**  
August 1-31  
Reception - August 9, 2-4 pm

**Ellwood Wingert, Native American Artifacts**  
September 5-27  
Reception - Sept. 13, 2-3 pm

**Jeanne Rager, Rager Art Gallery**  
October 1-8  
Reception - October 4, 1-4 pm



## Volunteer News...

### What's Blooming?

Volunteer Coordinator Lori Diehl has kept the volunteers very busy doing projects for the education department, Earthkeepers, and Ranger Rick. Several volunteers staff the observatory, Second Saturday Concerts, special events, or other activities. However, there is always a need for extra people who are genuinely interested in our prairie preserve.

Whether your interest lies in the upkeep of birdhouses, beekeeping, weeding prairie plots, beautifying the grounds, filling in divots or planting prairie plugs, we sincerely need you! For those who would rather stay inside, we need individuals to man the observatory, fill-in at special events, and work concessions at Second Saturday Concerts.

If you are looking for a special niche, our Tuesday mornings are extra special. We do many hands-on activities, work in the woodshop, and enjoy each others' company over a cup of coffee and a donut. For more information, please call Lori at 234-8535, ext. 203.

### Summer Camp

Camp Director Laurie Connor and Counselors Liz, LaToya, and Justin will present interesting and exciting lessons on getting in touch with the earth. We are looking for a few dedicated, mature teenagers to assist us as Jr. Counselors each weekday for these four two-week sessions. If you enjoy children, the outdoors, and having fun, please contact Lori at 234-8535, ext. 203, on how you can be a part of this great summer experience! The camps are for ages 3-5 and 6-12.



### Volunteer Schedule

If you would like to volunteer at the Byron Forest Preserve's Jarrett Prairie Center or PrairieView Golf Course, please call Lori at 234-8535 ext. 203.

Hopefully, one of the following meeting times will fit into your schedule, or you can set up a different time with Lori:

Tuesday Morning Meetings - 8:30-11:30 am  
Tuesday Morning Woodshop - 9-11:30 am  
Tuesday Afternoon Woodshop - 1:30-4:30 pm  
Thursday Woodshop - 8:30 am-4:30 pm



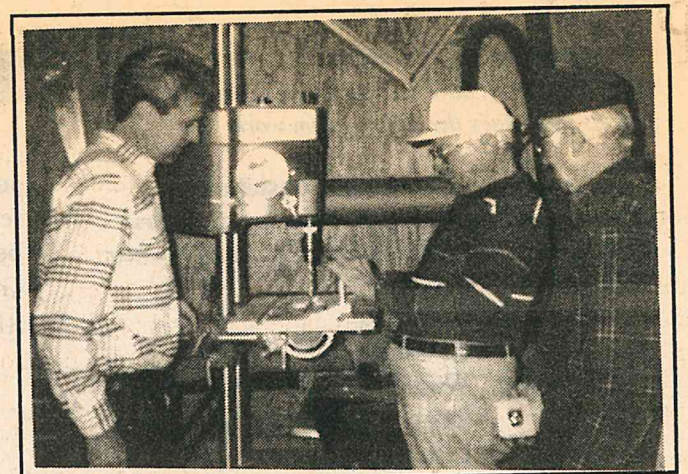
Woodshop volunteers built and installed cabinets in the theater for the Earthkeepers program. Pictured l-r: Volunteer Coordinator Lori Diehl, Willis Strub, Howard Fox, and Bob White.



Volunteers assisted with Operation Santa Claus and had a Cookie Exchange. Pictured clockwise: Dana Jonakin, Ethel DeVore, Shannon Godby, Volunteer Coordinator Lori Diehl, Dottie Whidby, Anita Liphart, Sharon Noah, and Sara Pado.

### Look at the Greens!

The golf course needs volunteers to plant prairie plugs, fill divots, and other various activities. If you are one who loves to be outside gazing over a beautiful golf course, we are the place for you! Please call Lori at 234-8535 ext. 203 for more details.



Volunteers building in the woodshop. Pictured l-r: Dave Webb, Willis Strub, and Howard Fox.



### Benefits of Volunteering

You can play a key role in the development of Northern Illinois' finest Prairie, Golf, and Museum Complex by assisting Naturalist Todd Tucker on the preserve, Golf Maintenance Superintendent Steve Storz on the greens, Lisa Johnson in the Observatory, Barb Wingert & Laurie Conner in Education, and many more activities held here at the Jarrett Prairie Center.

The benefits of volunteering include...

- Learning different skills while working side-by-side with staff and other volunteers.
- Gain resume experience while enjoying the company of others.



### Stargazing Volunteers Needed!

Lisa Johnson will help interested volunteers find their niche at the Weiskopf Observatory on the second and fourth Tuesday, the first and third Saturday, and special public programs on the third Tuesday of each month. All you need to do is call 234-8535, ext. 232 for more details.



# PrairieView Golf Course News

North German Church Road, Byron (815) 234-GOLF(4653)

## Ready for Summer?!

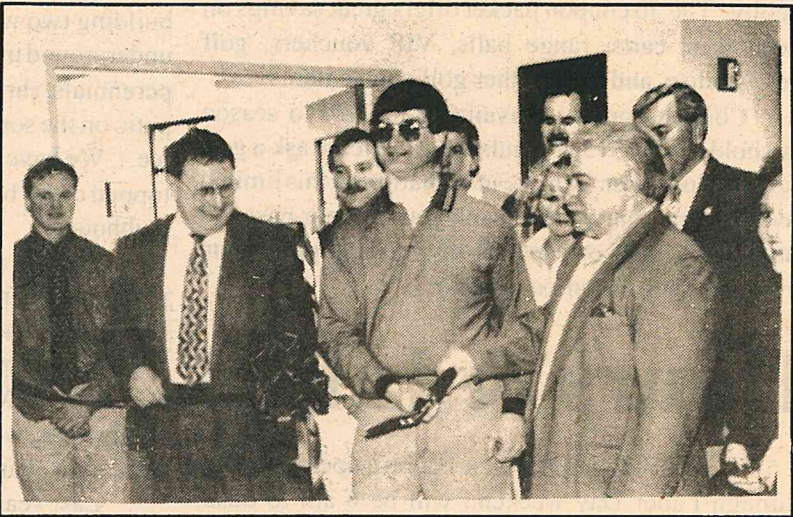
PrairieView is ready! Summer is upon us and everything is in place this year for the best golf season ever here at PrairieView - a great golf course, a dedicated staff, and now, a beautiful new clubhouse to enjoy!

After several years of planning, the new clubhouse is now complete and ready for what we expect to be a very busy season. Many of you have already taken advantage of the many new clubhouse features including our new fully equipped golf shop, enjoyed our expanded food and beverage service, and relaxed in our comfortable new dining room. Big hits among our junior golfers in order of popularity have been Karla and Heidi's fresh baked pastry and cookies, the new lower level club storage area, and our complimentary courtesy phone for local calls home for rides. Soon to be completed is an extensive clubhouse landscaping plan and construction of our large new patio area overlooking #9 green.

Besides the clubhouse, other significant improvements are taking place on the course. Steve Storz, Mike Eytalis, and the rest of the grounds crew are busy finishing the forward tees, adding some finishing touches such as the new tee sign/ball washer landscaping areas, and planting trees on holes #2 and #11. Twenty new golf cars were delivered in late April to keep our fleet the best in the area.

And not the least important, a dedicated clubhouse staff is ready and waiting to make this the best season ever at PrairieView. Stop by and visit new assistant Chris Patterson in the golf shop, and he'll be happy to talk to you about our large selection of junior golf equipment. Our friendly concession staff is eager and willing to offer recommendations for a tasty homemade snack or made-to-order deli sandwich. Even if you don't have time for a round of golf, come on out with a few friends and enjoy all the amenities our new clubhouse has to offer.

So enjoy the coming months and plan now to get involved in some of the many golf activities the staff has planned. We look forward to providing you with a fun, relaxing, and enjoyable season of golf here at PrairieView Golf Course.



PrairieView Clubhouse Ribbon Cutting Ceremony. Pictured l-r: Doug Holzrichter, Architect; Bill Craig, Chamber Board; Mike Kohlstedt, Chamber Board; Ken Ledene, PGA Pro; Gene Smith, Forest Preserve Board Vice President; Steve Storz, Course Superintendent; Karla Coy, Assistant Clubhouse Manager; Ernie Leombruni, Chamber Board Vice President; Edward Clift, Forest Preserve Executive Director; and Beth Clift, Chamber Executive Director.

## PrairieView Going "Spikeless"

Starting this season, PrairieView will be implementing a plan to allow non-metal spikes or tennis shoes as the only approved footwear permitted on the golf course.

All golfers are being asked to voluntarily convert to non-metal spikes during the initial phase of the plan. Beginning June 15, however, all golfers wearing metal spikes will be charged a \$3.50 surcharge and be given a free set of "SOFTSPIKES." For the remainder of the 1998 golf season, golfers will be allowed to wear metal spikes, but the surcharge will apply each time.

We thank all our golfers and patrons for their cooperation during this conversion period. Virtually spike free greens will soon become a reality, even after hundreds of other golfers have played before you on the busiest of days.



It's Tee Time!!

### 1998 Golf Fees

	Weekends & Holidays 9 / 18 holes	Weekday Mon.-Fri. 9 / 18 holes
<b>Daily Green Fee:</b>	<b>\$16 / \$26</b>	<b>\$14 / \$21</b>
County*	14 / 22	12 / 18
Resident*	11 / 18	9 / 14
<b>Senior**</b>		
<b>Daily</b>	--	<b>\$12 / \$17</b>
County*	--	10 / 14
Resident*	--	6 / 10
<b>Junior**</b>		
<b>Daily</b>	<b>\$12 / \$14</b>	<b>\$10 / \$13</b>
County*	10 / 12	8 / 10
Resident*	6 / 8	6 / 6
<b>4 PM Twilight</b>		
<b>Daily</b>	<b>\$16</b>	<b>\$14</b>
County*	14	12
Resident*	8	8
<b>5:30 Twilight</b>		
<b>Daily</b>	<b>\$14</b>	<b>\$12</b>
County*	12	10
Resident*	6	6
*Ogle County or Byron resident rates with resident I.D. cards only.		
**Senior/junior rates: before 3 pm weekdays and junior rates after 3 pm weekends/holidays. Seniors 60 & over and juniors 18 & under by 10-31-97.		

### Season Golf Passes\*

<b>Resident - Single</b>	
Adult	\$395.00
Senior	\$250.00
Junior	\$75.00
College Student	\$140.00
<b>Resident - Couple/Family</b>	
Adult	\$595.00
Senior	\$395.00
<b>Out of District - Single</b>	
Adult	\$515.00
Senior	\$325.00
Junior	\$110.00
College Student	\$195.00
<b>Out of District - Couple/Family</b>	
Adult	\$725.00
Senior	\$525.00

\* Restrictions may apply to certain pass categories.

### Cart Fees

	Wknd/Hol. 9 / 18 holes	Weekday 9 / 18 holes
<b>Daily Cart Fee:</b>	<b>\$16 / \$24</b>	<b>\$14 / \$22</b>
Senior/Single*	12 / 18	10 / 16
Twilight**	12	10

\*Senior/Single - Some restrictions apply to single rate during peak hours. Senior cart rate available during senior playing hours only.

\*\*Twilight - after 5:30 PM, Mon. - Sun.

For tee times,  
call 815-234-GOLF



## Coupon Book Available

PrairieView is again offering a limited number of coupon books offering over \$500 in savings at our golf facility. The 30 coupon packet offers great savings on green fees, carts, range balls, VIP vouchers, golf merchandise, and many other golf course items.

Coupon books are available for \$10 to season passholders and \$15 at regular price. Please ask a golf shop staff member for more information on this limited savings opportunity. We thank you for your past and future support of our special savings and promotion programs such as our coupon book.

## Hours & Info

PrairieView Golf Course hours of operation May through Labor Day weekend will be 6 am to dusk, Monday - Sunday, weather permitting. Our newly renovated clubhouse will remain open up to one hour after dusk on most days. PrairieView's liquor license, however, requires that no alcoholic beverages be sold after 9 pm, Monday - Sunday.

Tee reservations are available on all days for tee times before 4 pm. Please call 234-GOLF to make your reservation. Tee times after 4 pm are for walk-in times only or, in some instances, blocks of time are reserved for league play. Residents and season passholders may reserve up to eight days in advance, all others seven days. Remember, junior season passholders do not have tee time reservation privileges. Please be prepared to give either your resident ID or pass number or a Master/Visa charge number in order to guarantee your reservation.

## Ladies League

Tuesday, May 12, marked the kick-off for this season's ladies golf league at PrairieView. The league started play last year and hopes to see the new group continue to grow in size. Anyone interested in participating from novice to experienced players are encouraged to come out and participate in a friendly, non-competitive golfing atmosphere. Rain or shine, the group will meet at 9 am on Tuesdays in May. We will be using our spacious new clubhouse dining room for indoor activities if the weather doesn't allow being outdoors.

PrairieView PGA head golf professional Ken Ledene and new assistant golf professional Chris Patterson will be on hand in May to offer a free instructional clinic and answer all questions regarding rules, equipment, etiquette, etc. Diane Cremens has volunteered to help coordinate league activities on a weekly basis. A Tuesday morning sitting service will also be offered this year starting June 2 for moms with young ones.

Give us a call at 234-4653 if you have any questions. Make plans now to come out, join in the fun, and learn more about the wonderful game of golf.



## Turf Notes

By Steve Storz, Golf Superintendent

We have planned another year at PrairieView packed with improvements. One obvious project will be to install the landscape around our beautiful, new clubhouse. This includes edging all bed areas and building two walls with limestone rocks, installing an underground irrigation system, planting ground covers, perennials, shrubs and trees, and construction of a new patio on the south lawn overlooking nine green and ten tee. We have already placed fourteen 6"x 6" copper-topped cedar bollards to control cart traffic around the clubhouse.

You've probably noticed the new limestone planters near many of our tees. Our goal is to build them for all the tees to eliminate hand trimming, and to provide an aesthetically pleasing area for the tee accessories. Most will be planted with prairie forbes and grasses, while some will have low growing shrubs and colorful annuals.

Last year, capital crews built three new forward tees which we plan to open in May. This year, our goal is to construct forward tees on holes 6, 15, 2, 16, 1, 10, 5, 8, 18 and 17.

Tree planting in the areas of 11 tee/ 8 green and 2 green/ 3 tee will be finished as weather permits. These 20-25 foot beauties are transplanted by a 90"

truck-mounted tree spade which digs a 14,000 pound soil/root ball. Should you be fortunate enough to witness this machine in action, it is quite a sight to behold.

A few other ongoing improvements which you can expect to see this year are as follows: 2" wide gravel surface drains installed in wet areas on fairways and roughs to speed up removal of surface water and edging and mulching of all smaller trees in the roughs. The wood chips used will be produced from invasive weed trees cut and cleared by the prairie restoration crew. Look for PrairieView's greens to putt truer and faster as we implement our new top dressing and rolling program. The prairie plugs planted last year in rough areas should begin to "show their colors" as fall approaches. As a side note, if you notice someone on a bright orange machine starting to rake a sand bunker while you are putting out, don't be concerned. It's our new electric powered machine, which is virtually silent.

Again, thanks for your patience with all our construction projects. Our ultimate goal is to provide you, our customers, an ever improving golf experience: challenging, yet fun, aesthetically pleasing and even educational.

## Couples Golf Events

Watch for announcements for several new couples events to be scheduled this summer. These will be planned events scheduled well in advance, requiring advance registration, and having assigned tee times. Events will be planned for either Friday, Saturday, or Sunday in order to minimize conflicts with holidays, graduations, or other major weekend events.

We encourage all couples to stay after golf for plenty of good food, fun, and camaraderie in our new clubhouse. Karla Coy and her staff will have special moderately priced menus planned for each event. So, come out and enjoy some good golf and good fun at PrairieView Golf Course this summer.

## '98 "VIP" Voucher Program

PrairieView's own in-house "VIP" voucher debit card has been a huge hit with golfers this spring. Now in its third season, more golfers than ever are starting to realize the big savings this special card offers on daily cart, green fee, and range ball use.

In addition to the convenience of use, PrairieView's "VIP" card can provide green fee discounts up to 20%, motorized cart discounts up to 30%, and range ball discounts up to 50% off regular prices. Your "VIP" card can also be used for most clubhouse purchases including golf merchandise, concession items, and golf

lessons. For resident discount cardholders, all "VIP" green fee discounts are in addition to the regular resident card discounts you're already receiving.

Remember too, there is never a bad time to buy a "VIP." For instance, buying one even late in the summer makes sense because all "VIP" cards carry a two-year expiration. For a much appreciated gift for any golfer in your family, a "VIP" card makes a perfect gift any time of the year. Brochures and complete information are available at the PrairieView clubhouse.

Plan Level Number	Selected \$ Voucher Purchase Price	Green Fee Discount	Cart Discount	Range Ball Discount	Early Bird Purchase Price by 3-22-98
1	\$100.00	0%	0%	40%	\$95.00
2	\$200.00	5%	15%	50%	\$190.00
3	\$300.00	10%	20%	50%	\$285.00
4	\$450.00	15%	25%	50%	\$427.50
5	\$600.00	20%	30%	50%	\$570.00



# New Face on the Course



Chris

PrairieView Golf Course would like to welcome a new member to our 1998 staff. New assistant golf professional Chris Patterson originally hails from Connecticut where he worked at renowned Richter Park Golf Course in Danbury. Chris was a three-time choice for the all-state golf team and two-time winner of the sportsmanship award at his local high school.

He has spent the last two years at River Heights Golf Course in DeKalb, IL, where last season he was the clubhouse manager. Chris owned and operated his own pro shop, giving lessons, repairing clubs, and actively promoting golf to juniors.

Chris was brought to PrairieView this year to specialize in customer service and merchandising. His experience as a youth leader and counselor at his local church in Danbury will also be a benefit to our rapidly expanding junior golf program. Living on site at the Byron Forest Preserve farmhouse, Chris is always available for any questions or suggestions you may have. Stop in our new clubhouse and meet him soon.

# Junior Golfer News

Open registration for PrairieView's summer junior golf program began in late April and continues right up to when the class begins or is filled. Currently there are eleven classes available for youth ages 5 - 15, and new classes may be added for those on our waiting list. Complete information on the entire junior summer lesson program is available at the golf shop or by calling 234-4653 (GOLF).

The first class sessions begin on Tuesday, June 9, and continue through the end of July. Class assignments will be determined by both age and experience. New activities and special events are also being planned for this season in addition to the regular instruction sessions. New assistant golf professional Chris Patterson will be regularly involved in all the summer junior golfer activities.

## Pace of Play

*Just a reminder, please be considerate and use the pace of play clocks on the course.*

# Golf Lessons

Golf lessons are available from PGA Golf Professional Ken Ledene. New apprentice assistant golf professional Chris Patterson will be helping with the junior lesson program, group lessons, and in the near future, private lessons.

Golf instruction is available at all experience levels and for all age groups - adults, seniors, and juniors. Private lessons offered singly or in series are available by prior appointment. Group clinics of 6 - 10 players for beginners, intermediates, and advance players are also scheduled on a regular basis.

Golf lessons by PGA Head Professional Ken Ledene:

**Private Lesson Rates:**

- Single Adult-1/2 hr./1 hr. - \$18 / \$30
- Single Junior-1/2 hr./1 hr. - \$15 / \$24
- Series Adult-3/4 hr. - 4 sessions - \$80
- Series Junior-3/4 hr. - 4 sessions - \$65
- Series Adult-3/4 hr. - 4 sessions - 2 people - \$130
- Series Junior-3/4 hr. - 4 sessions - 2 people - \$100

**Group Clinics:**

- \* Start Tuesday/Thursday - June 2, 4, 9, & 11
- \* Four one-hour sessions - \$40/person
- \* Six - eight students per class
- \* Class #1 at 6 pm-Beginners (never played/new players)
- \* Class #2 at 7 pm-Intermediates (playing experience)
- \* Other classes available later in June and July.

# Mark These Dates!

**PrairieView Open Golf Leagues:**

- Junior League - Mondays - starts June 8 at 7 am
- Ladies League - Tuesdays at 8 am
- Men's Senior League - Wednesdays at 8 am

**PrairieView Tournaments:**

- June 13 & 14 - Ogle County Championship - 36 holes
- June 20 - Lincoln Highway Qualifying - 27 holes
- July 12 - New Parent/Child Tournament
- July 18 & 19 - Lincoln Highway at Oregon - 54 holes
- July 27 - Ogle County Junior Championship
- Aug. 8 & 9 - PrairieView Championship - 36 holes
- Aug. 10 - PrairieView Junior Championship
- Sept. 12 & 13 - 7th Annual Gold Medal Tournament
- Sept. 19 - Fall Ultimate

**Golf Outing Schedule:**

- \* Updated Golf Outing schedules available at clubhouse on a regular basis.



# Junior Golf Fundraiser

PrairieView's annual two-player "Alternate Challenge" event to benefit our junior golf will be held on Sunday, June 28. This worthy event raises nearly \$5,000 annually to benefit PrairieView's junior golf programs and activities. The one-day event continues to be a huge fundraising success due to the fact that 100% of all tournament entry fees go to benefit our junior golf activities.

The format this year will again be a two-player, choose your own partner, alternate shot event. Both players tee off each hole, choose the best shot, and alternate from that point throughout the hole. This unique format plus special games and contests during the day provide all participants plenty of fun and good times.

Total cost again this year will be \$45 per person (\$40 for PrairieView season passholders) which includes: 18 holes golf & cart, lunch, beverage... plus golf passes for two free 18 hole rounds of golf for each participant! Everyone who would like to give something back to golf is encouraged to join the fun and show you care about PrairieView junior golfers, the future of golf.

Registration and entries for the event will be accepted starting early May. Reservations will fill quickly, and the field will be limited to the first 144 paid entries. Call 234-4563 and ask for Ken if you would like to contribute to the fundraiser by just helping out.