



# BYRON FOREST PRESERVE DISTRICT NEWS

1995

PRESERVATION - EDUCATION - RECREATION

JAN-FEB-MAR

## NEW DIRECTOR HIRED

Ed Clift, the Byron Forest Preserve District's recently hired director, said Nov. 18 that he is eager to get started at his new job. The Des Plaines resident took over the district's top post on Dec. 19.

"I'm very excited. I think it's going to be a great challenge. I'm looking forward to getting settled in the community and getting to know the staff here," Clift said during a Nov. 18 visit to the forest preserve and the Byron community.

Clift was offered a contract by the Byron Forest Preserve Board on Nov. 15 after an extensive search for a replacement for longtime director Jack Philbrick, who stepped down June 30 after 12 years in the position.

Clift was selected from a field of six highly qualified finalists for the director position. A team from the Illinois Association of Park Districts (IAPD) assisted the Byron Forest Preserve District Board of Commissioners in its search for a new director. The IAPD team screened more than 50 applicants for the post and narrowed the field to the final six.

Board President and Interim Director Jim Jennings said Clift has a strong background in the areas necessary to the forest preserve district, such as administration, board and personnel relations, public relations, construction, park and golf maintenance, and programming.

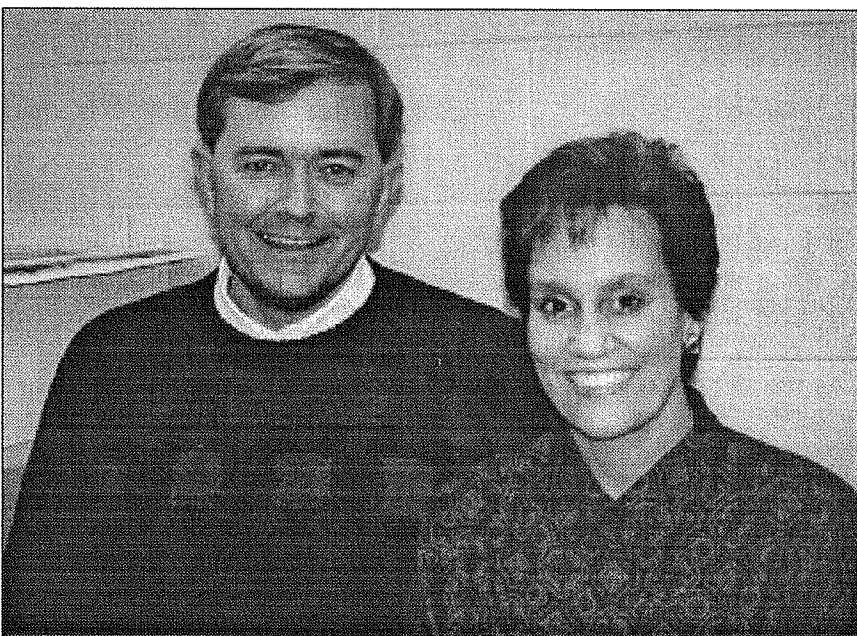
Prior to coming to Byron, Clift was the assistant director of the Des Plaines Park District. He is a graduate of Purdue University, and grew up in LaFayette, Ind. where he played high school sports.

He and his wife, Beth, (pictured above) and their two children, Billy, 5, and Megan, 19 months, will move to Byron as soon as possible, hopefully by mid-January. Clift also has three older children, Kristi, 14, Mark, 19, and Stacy, 23.

Clift said he plans to spend his first days on the job getting to know his new surroundings, the forest preserve staff and the community.

He also hopes to find some leisure time to work in his favorite off-duty activities: basketball (he's looking for a team), skiing - both water and snow, golf, and spending time with his family.

Welcome to Byron Ed, Beth, Billy and Megan!



# LOTS A BULL!!

The Jarrett Prairie Center's newest museum exhibit is definitely impossible to overlook. Taxidermist Jim Hess delivered a massive American bison bull to the prairie center on Oct. 23.

The bull, which stands about six feet at the shoulder and weighed about a ton, completes the museum's buffalo family. Hess also prepared the buffalo cow and calf which have been on display for sometime.

Hess, who donates his taxidermy talents to the forest preserve, said the huge bull is the largest project he has tackled so far. "It would take an elephant to beat this," he said, with a grin.

The nature division staff is currently working with Hess to design an exhibit which will include all three buffalo as a focal point of the museum.

Preparing the bull took about 40 hours, Hess said, as he painstakingly fit the giant tanned hide over a laminated paper body with a plastic foam head. Attaching the horns and hooves were the final stages of the project.

Hess added native grasses to a base around the buffalo, creating the illusion that the big beast is out grazing on the prairie.

Getting the finished buffalo from Hess' workshop in his home in Winnebago into the museum proved challenging. Hess and a friend hoisted the bull into the back of a pickup truck, secured him in place with ropes, and then made the ten-mile trip, drawing surprised stares from motorists they encountered along the way.

Once at their destination, with the help of forest preserve interim director Jim Jennings, Hess rolled the buffalo off the truck and into the museum with relative ease thanks to the wheels on the base.

To make way for the mighty bull, the train exhibit was loaned to the Byron Museum District and will be on display at the Lucius Read House. The train exhibit depicts Byron in 1910.

The bull will leave the museum briefly in January when he will be the main attraction at the forest preserve's booth at the RV Show at the Metro Centre in Rockford. Hess and forest preserve personnel will man the booth Jan. 20-22.

Other museum exhibits will also be featured at the show, along with wildlife and nature paintings done by Hess' wife, Lucinda.

## *In Progress...*

*At left, Taxidermist Jim Hess fits the hide to the form.*

*Lower left, the finished bull is unloaded at the Jarrett Prairie Center.*

*Below, he's ready for visitors at the Jarrett Prairie Center Museum.*



# Superintendent Retires

Longtime park maintenance supervisor Bob Smith retired Nov. 30 after nearly a decade with the Byron Forest Preserve District. Smith, who was hired in 1985, was one of the district's first full-time employees.

Board President and Interim Director Jim Jennings, along with supervisors and the park maintenance division staff, honored Smith for his years of service with a surprise luncheon on his last day at work.

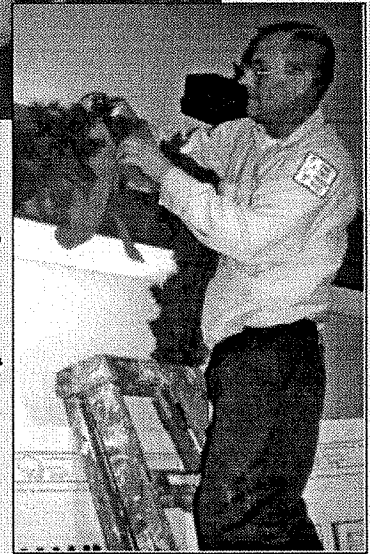
"I hope you all have as much fun working here as I have over the last 10 years," Smith told his fellow staff members. "I have enjoyed knowing all of you."

Despite his retirement from full-time service, Smith won't be away from the forest preserve for long. After a month or so vacation in Florida, he'll be back to work on an occasional part-time basis.

Shawn Morrison, Smith's assistant, took over as park maintenance supervisor on Dec. 1.



*Above, Park Maintenance staff (L-R), Brian Steffa, Retiring Superintendent Bob Smith, and Don Hayenga.*



*At right, new Park Maintenance Superintendent Shawn Morrison hangs Christmas decorations.*

## First Board Election

The Byron Forest Preserve's first board election is just around the corner. All five commissioner positions will be on the April ballot.

Commissioners will be elected for the first time in the forest preserve's 12-year history. To this point, commissioners have been appointed by the Ogle County Board.

Persons interested in serving on the forest preserve board can pick up a candidate petition in the administrative office at the Jarrett Prairie Center. The petitions and related forms may be obtained from Executive Secretary Cathie Francis during normal business hours, 8 a.m.-4:30 p.m. Monday through Friday.

Candidates must be residents of the Byron Forest Preserve District. The petitions require the signatures of 25 registered voters who reside in the Byron Forest Preserve District.

The completed petitions must be filed with Francis from Jan. 16-23 in the district's administrative office during normal business hours. On Monday, Jan. 23 Francis will remain in the office until 5 p.m. to accept petitions.

For more information, call Francis at (815) 234-8535. The administrative office at the Byron Forest Preserve will be closed for the holidays from Monday, Dec. 26 until Tuesday, Jan. 3.

## Brune Appointed To Board

Fred Brune, Byron, was appointed Sept. 20 to fill an unexpired seat on the Byron Forest Preserve Board of Commissioners.

The Ogle County Board chose Brune to fill the position left vacant when longtime Commissioner and Board President R.M. Jarrett retired in July. Brune assumed his post at the Sept. 20 board meeting.

Brune has lived in this area for five years and moved to Byron several months ago with his wife, Deb, and their five children. He is a member of The Golf Club at PrairieView.

Brune operates his own vehicle leasing firm and has been in business since 1979. He said he hopes to lend his business experience to the forest preserve board.

Brune said he plans to run for a board seat in the April election.

# Annual Craft Show

Mild temperatures and shoppers in a buying mood contributed to the success of the third annual Christmas Craft Show Dec. 3 at the Jarrett Prairie Center.

Cathie Francis, who organized the event, said approximately 1,400 persons attended. Temperatures hovered in the lower 50s under partly sunny skies.

Francis said exhibitors reported brisk sales. "We had more buyers than lookers apparently. The crafters seemed pleased - 75 percent of them have already reserved their booths for next year," she said.

The 35 crafters offered a wide range of handmade items for sale, including wood crafts, customized clothing, appliqued and embroidered sweatshirts and T-shirts, rugs, Native American keepsakes, clocks, jewelry, dolls, birdhouses, and Christmas ornaments and decorations.

Plans are already underway for next year's craft show, which will be held on Saturday, Dec. 2, 1995.




## PrairieView Reaches 30,000

Unusually mild weather allowed PrairieView Golf Course to stay open through November 27 for walking golfers this fall. Traditionally, the golf course has closed on October 31.

To the delight of many hardy golfers, four additional weeks were added to the golfing season. The additional 331 rounds generated in November plus the 29,697 rounds as of October 31, combined to total ... 30,031 golf rounds for the 1994 golf season. The final golf rounds total for all of 1993 was 24,049.

After conferring with Superintendent Steve Storz, Clubhouse Manager Ken Ledene decided to officially close the course for the season on November 28. The much delayed beginning of freeze/thawing conditions risk potential harmful damage to the course at this point.

Reaching the milestone of 30,000 rounds in only PrairieView's second full season seems to be a fitting conclusion to a highly successful year. Thanks again to all our residents, season passholders, and area golfers for your outstanding support. Best wishes from the clubhouse staff for a great year in 1995!!



*It's a dirty job...but someone's gotta do it! Even though the golfing season is over, the Golf Maintenance staff is hard at work. Pictured above are Adam Cunningham, Carson Breeden, Bruce Wiltfang, and Superintendent Steve Storz repairing an erosion problem on #7.*

## Stocking Stuffers On Sale

Unique handmade gifts for the golfer in your family are currently on sale in the Gift Shop at the Jarrett Prairie Center.

Oregon woodcarver Roy Keebler has created a collection of 10-inch golfers, each with a personality all their own. The loveable duffers, which normally sell for \$85, are currently available for only \$75.

Equally appealing are Keebler's heads of golfers, which he carved from a golf ball situated on a tee. Each head is topped by a hat appropriate to the wearer's temperament. The golfing heads are on sale for \$9.75.

Also available in the Gift Shop through Friday, Dec. 23 is the perfect stocking stuffer for a golfer - a 1995 season pass to PrairieView can be purchased at 1994 rates.

## RV SHOW

The Byron Forest Preserve District will take its show on road Jan. 20-22 when we set up a booth at the Rockford Metro Centre's Recreational Vehicle and Camping Show.

Taxidermist Jim Hess and his wife, artist Lucinda Hess, will share the booth. The Hess family donates their time and talent to the forest preserve.

The booth will showcase everything the forest preserve has to offer, from preserving and restoring the prairie and its wildlife to educational programs to PrairieView Golf Course.

On exhibit will be the bull buffalo recently completed by Hess for the Jarrett Prairie Center museum, as well as other wildlife displays. Plans call for visual displays of the various aspects of the forest preserve.

## Sinnissippi Trek in the Works

The Rock River Valley Volkssporters Club's secretary, Deb Leffelman is working on a sanctioned walk to be sponsored by RRVV on May 13, 1995. The walk will begin at Sinnissippi Forest (Tree Farm) and the majority of the walk will be through the State Forest area, including the Byron Prairie Preserve. Put this date and event on your calendar.

## Address Change

Our mailing address has recently changed. We are now getting our mail at a box in the Byron Post Office, instead of in our rural route mailbox.

Our new mailing address is Byron Forest Preserve District, P.O. Box 417, Byron IL 61010-0417.

# CALENDAR OF EVENTS

## JANUARY

- 1 JARRETT PRAIRIE CENTER CLOSED! - HAPPY NEW YEAR!!
- 3, 5, 10, 12, 17,  
19, 24, 26, 31 Senior Exercise Class - 11-11:40 AM - JPC
- 3, 10, 17, 24, 31 District Volunteers - 8:30 AM - Jarrett Prairie Center
- 3, 10, 17, 24, 31 Public Sky Viewing - 6-8 PM - Weiskopf Observatory
- 5 Astronomy Club Meeting - 7 PM - Weiskopf Observatory
- 14 Second Saturday Bluegrass/Swing Concert - *Harmonious Wail* - 8 PM - JPC
- 14 Winter Bird Walk - 9-11 AM - JPC
- 17 Byron Forest Preserve District Board Meeting - 7:30 PM - JPC
- 19 Rock River Valley Wild Ones Meeting - 6-9 PM - JPC

## FEBRUARY

- 2 Astronomy Club Meeting - 7 PM - Weiskopf Observatory
- 2, 7, 9, 14,  
16, 21, 23, 28 Senior Exercise Class - 11-11:40 AM - Jarrett Prairie Center
- 7, 14, 21 Nature Preschool (age 4-5) - 9:30-10:30 AM & 1:30-2:30 PM - JPC
- 7, 14, 21, 28 District Volunteers - 8:30 AM - JPC
- 7, 14, 21, 28 Public Sky Viewing - 6-8 PM - Weiskopf Observatory
- 8, 15, 22 Nature Preschool (age 3-4) - 9:30-10:30 AM - JPC
- 11 Second Saturday Folk Music Concert - *Pierre Pettis* - 8 PM - JPC
- 11 Rock River Valley Wild Ones Trip to Milwaukee - 6 AM (meet at JPC)
- 16 Rock River Valley Wild Ones Meeting - 6-9 PM - JPC
- 17 Owl Moon Walk/Moonlight Skiing - 7-9 PM - JPC
- 21 Byron Forest Preserve District Board Meeting - 7:30 PM - JPC
- 25 Creative Memories (Scrapbook Class) - 10:30 AM - 1:30 PM - JPC

## MARCH

- 2 Astronomy Club Meeting - 7 PM - Weiskopf Observatory
- 2, 7, 9, 14, 16,  
21, 23, 28, 30 Senior Exercise Class - 11-11:40 AM - Jarrett Prairie Center
- 4 Golf Exercise Class - 1-4 PM - JPC
- 7, 14, 21, 28 District Volunteers - 8:30 AM - JPC
- 7, 14, 21, 28 Nature Preschool (age 4-5) - 9:30-10:30 AM & 1:30-2:30 PM - JPC
- 7, 14, 21, 28 Public Sky Viewing - 6-8 PM - Weiskopf Observatory
- 8, 15, 22, 29 Nature Preschool (age 3-4) - 9:30-10:30 AM - JPC
- 11 Second Saturday Folk Concert - *Carol Montag* - 8 PM - JPC
- 16 Rock River Valley Wild Ones Meeting - 6-9 PM - JPC
- 18 Harmonica Workshop - 1-4 PM - JPC
- 19 Dog Motivation and Thought Seminar - 1-4 PM - JPC
- 21 Byron Forest Preserve District Board Meeting - 7:30 PM - JPC

ADVANCE  
REGISTRATION  
REQUIRED

SIGN UP NOW!!  
234-8535

# ***LET IT SNOW...***



## **Cross Country Skiing Rules**

1. Register at the Jarrett Prairie Center prior to skiing.
2. Skiing is not permitted on the golf course. Ski on designated interior trails only. Snowmobile trail available when no snowmobiles are present.
3. The Prairie Preserve closes at sun down. Skiing is allowed after this time by prior permit only.
4. Skis are available for rental at the Jarrett Prairie center. Daily rental skis must be returned no later than 3:30 PM.



## **Snowmobile Rules**

1. Obey the ordinances and rules of the Byron Forest Preserve District and the City of Byron. To snowmobile on Preserve property, you must have a snowmobile permit. Permits are available at the Jarrett Prairie Center at no cost.
2. Operate snowmobiles only on the designated trails. Snowmobiles are not permitted on the golf course.
3. Observe the operating hours of the Prairie Preserve (dawn to dusk).
4. NEVER operate a snowmobile on Preserve property while under the influence of alcohol or in possession of alcohol.



## **Sledding**

Sledding can be a fun experience. A sledding hill is available at the southwest side of the Jarrett Prairie Center.

**BYRON FOREST PRESERVE DISTRICT  
7993 N RIVER RD  
BYRON IL 61010**

**BULK RATE  
U S POSTAGE PAID  
BYRON IL 61010  
PERMIT NO 50**

**POSTAL PATRON  
BYRON IL 61010**



# BYRON FOREST PRESERVE DISTRICT NEWS

Jim Jennings, Board President  
Dr. Robert Johnson, Vice President  
Gene Smith, Secretary  
George Ashby, Treasurer  
Fred Brune, Commissioner

Edward C. Clift, Executive Director  
Vinde Wells, Managing Editor  
Michelle Lipps, Editor

1995

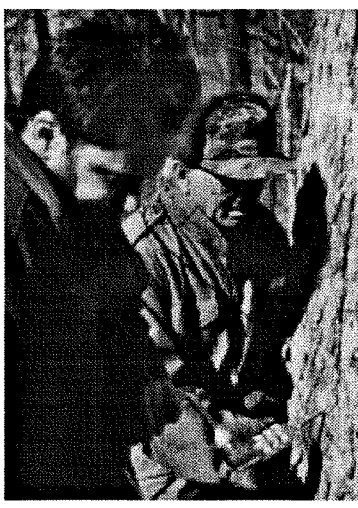
PRESERVATION - EDUCATION - RECREATION

SPRING

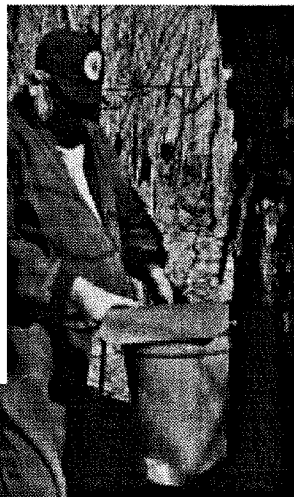
## MAPLE SYRUP TIME



*Howard Fox and Josh Skolnick drill holes in a large sugar maple to begin the process.*



*Josh and Howard drill another sugar maple located at the northwest corner of the Prairie Preserve.*

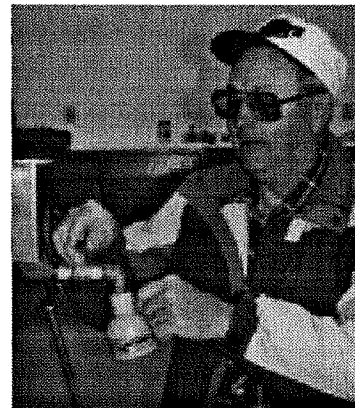


*Charles Holeyton hangs a bucket to catch the first sap.*

Stand aside, Mrs. What's-Your-Name in the talking syrup bottle! The Byron Forest Preserve has gone into the maple syrup business.

Warm weather on Feb. 23 was the signal for the maple syrup operation to begin at the forest preserve.

Continued on page 6.



*Commissioner Ashby draws the first bottle of syrup.*

### Volunteer your maples - and yourself

The Byron Forest Preserve is looking for a few good trees - make that a lot of good trees. We need a new kind of volunteer in 1996 - sugar maples willing to donate sap!

If you have just one in the front yard or a whole timber full, please call. We would like to collect sap from as many as possible as our maple syrup operation expands.

We are also looking for human volunteers who are interested in helping with the maple syrup program.

For more information, or to sign up your tree or yourself, call Naturalist Josh Skolnick at 815/234-8535.





**Need a  
NEW  
recipe?!**

**Reserve your copy  
of the BRAND NEW**

***Prairie Volunteers  
Cookbook***

***More than 300  
GREAT recipes  
for ONLY \$5***

**To order NOW call:  
Harriett Bennett at 645-8835  
or Dana Jonakin at 234-8184**

Cookbook edited and compiled by the  
Prairie Volunteers of the Byron Forest  
Preserve.

## **Free Plants!!**

If you appreciate the beauty of our native wildflowers, grasses, trees and shrubs, and have a green thumb, here is how to get involved and get some of those plants FREE for your garden.

The Byron Forest Preserve and PrairieView Golf Course need a lot of these native plants to restore our natural areas and to develop natural landscapes on the golf course.

Unfortunately, space and staff are limited for growing the plants here at the preserve. This is where you come in. If you can grow vegetables from seed indoors - you can grow prairie plants!

We will give you seeds of your choice to start, instructions for growing, and growing supplies. You can keep up to half the plants raised for your own home landscapes! All we ask is we get the others for planting here at the preserve.

Last year our Master Earthgardener Joe Jonakin raised more than 3,000 prairie seedlings at his home and donated many to the preserve and to the Wild Ones' landscaping project along the bike path.

He still had enough left over to landscape more than 1,000 square feet of his own yard. And, it was all done in his basement under lights.

For more information or to get growing, call Josh Skolnick at (815) 234-8535.

## **Address Change**

**Our mailing address has recently changed. We are now getting our mail at a new box in the Byron Post Office.**

**Our new mailing address is Byron Forest Preserve District, P.O. Box 1075, Byron IL 61010-1075.**

## **Rock River Valley Wild Ones**

The Rock River Valley Wild Ones is a local chapter of the Wild Ones, a natural landscaping club which is based in Milwaukee. The Rock River Valley chapter, which became official last June, has grown rapidly and now boasts 34 members.

The Wild Ones have had a very active first eight months. Activities have included workshops on native plant gardening, growing native plants, collecting prairie seeds around Ogle and Lee Counties, presentations on the natural areas of the Rock River region, and tours of local lawns which use native grasses, flowers, trees and shrubs.

A unique and very special project which the Wild Ones have initiated is a community native prairie garden. In the fall of 1994, the Wild Ones, helped by a grant from the Ogle Top Open Space and Park Foundation, "adopted" an area along the bike path on the north side of the river. The grant was used to buy more than 200 prairie flowers and grasses.

Wild Ones members Joe Jonakin, Clyde James and Josh Skolnick, along with the Byron Forest Preserve, also contributed several hundred prairie and wet prairie plants.

During the fall of 1994, Wild Ones members removed existing lawn grass and weeds and planted more than 600 prairie plants. The Wild Ones will continue to maintain and expand the area during this spring. Many of the flowers planted last fall should bloom this spring and summer, putting on a real show.

If you would like more information, to join Wild Ones, or to volunteer at our community garden, contact our naturalist Josh Skolnick at 234-8535 or visit the forest preserve.

wild ones®



## First Election in History!

Residents of the Byron Forest Preserve District will have a unique opportunity on April 4 to play an active role in history in the making.

Commissioners will be elected for the first time since the forest preserve district was established in 1982. To this point, the commissioners have been appointed by the Ogle County Board.

At this first election, all five posts will be open. The successful candidates will serve terms of either two or four years. Subsequently, elections will be held every two years, and commissioners will be elected to four-year terms.

District residents are urged to let their voices be heard at the ballot box on April 4 at this very important election.

## Attention Crafters!

Five booths are still available for the fourth annual Christmas Craft Show on Saturday, Dec. 2 at the Jarrett Prairie Center.

To reserve a booth or for more information about the craft show, call Cathie Francis at 815/234-8535 from 8 a.m.-4:30 p.m. Monday through Friday.

## Something New for PrairieView

The Audubon Sanctuary System is coming to PrairieView Golf Course. This means golfers will see more native plants and flowers as well as birds, animals and butterflies.

Several acres of out-of-play turf will be replanted as prairie, savannah, wetland or woodland. About 40 nesting boxes will be installed this spring to attract bluebirds, owls, kestrels, flickers, chickadees and bats.

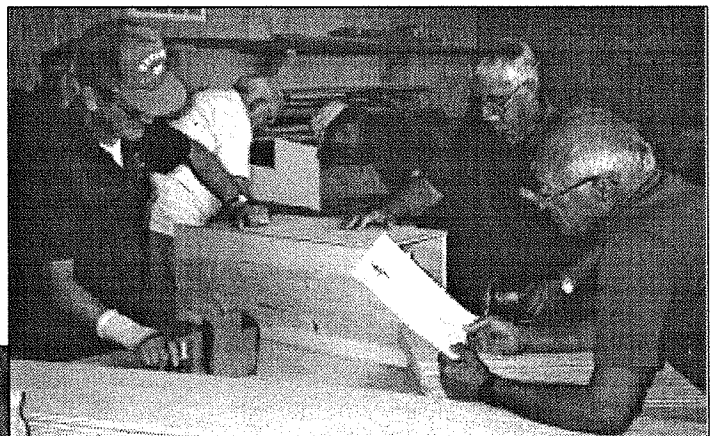
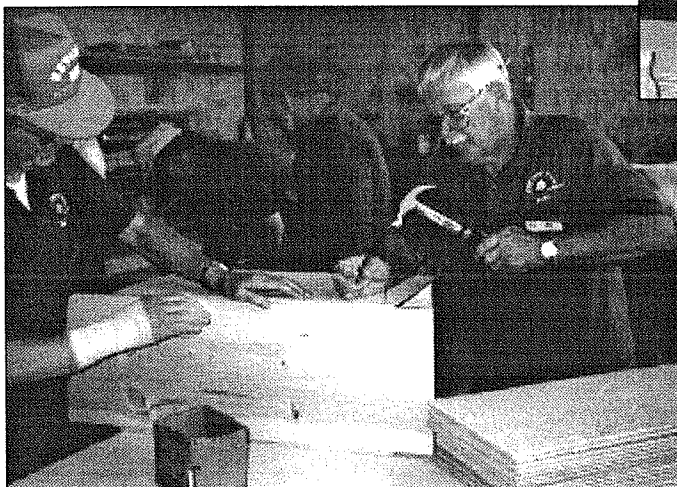
Many of these flying friends will aid in insect control on the course. Returning areas to native plants will reduce the costs of maintaining the course by reducing areas that need irrigation, fertilization, mowing, and pesticide spraying.

The program will also provide many opportunities for volunteers to get involved with its different aspects.

Clubhouse and course displays will describe new projects and report progress of ongoing projects, as well as identifying native flowers and birds.

This program will make PrairieView unique in this area and add to the enjoyment of golfers using the course, as well as preserving some of our natural heritage.

## Volunteers Build Homes at the Forest Preserve?



The Byron Forest Preserve District volunteers have been working all winter building new homes at the preserve.

The housing boom is actually for the birds - nesting boxes which will be installed throughout the Prairie Preserve and PrairieView Golf Course as part of the Audubon Sanctuary Program.

Pictured above are (l-r) John Counsell, Dick Boyd, and Al Fetting reviewing the "blueprint" for the nesting boxes.

Pictured left are John and Dick putting the finishing touches on a nesting box.

# What's Happenin' on the Prairie??

Prairie Log: March-April 1995

March and April are transitional months on the prairie. March is cold, windy and changeable, with a few warm days and even some heavy snows.

In spite of the often wintry weather, some of our summer and migratory birds begin to return; bluebirds have been seen on the prairie as early as March 11.

The ground is mostly bare in March, setting the stage for burning the prairie. Depending on the management goals of the specific area and the plants and animals which live there, we make the decision whether to burn or not to burn, as well as the timing of the burns.

The spring burning season lasts from late February through mid May. There is also a fall burning season which lasts from the first frost until there is snow cover.

Burns are conducted on days when the wind is between 5 and 15 miles per hour, temperatures between 40 and 70 degrees, and humidities are between 30 and 60 percent. It is often difficult to select a day to burn since there are only several days when weather permits.

One may wonder why we burn the prairie and if it hurts the birds and animals that live there. The fire destroys the tops of the unwanted woody plants and weeds, and blackens the earth, warming it up so that the heat-loving prairie flowers and grasses develop quickly.

Within two weeks of a spring burn, the black landscape turns green. Most of the animals and plants which live on the prairie either fly away, outrun the flames, or go underground (as little as one-half inch underground, the fire has little heating effect). However, as a precaution, we do not burn all of our prairie areas at the same time or the same year in order to preserve cover for wildlife and to protect over-wintering prairie insects.

The smoke from burns can be annoying, but prairie fires produce fewer harmful pollutant than come from mowers and other gasoline engines.

If you see smoke rising from our preserve, you are welcome to come observe the burns, and even volunteer. Call Josh Skolnick to be on the call list for scheduled burns.

We will also be conducting a public prairie burn for Spring Fest at 2 p.m. on Saturday, April 29, weather permitting.

March is also a good time to seed new areas of the prairie. The ground is often frozen early in the morning, making it possible to drive seeding machinery over the ground.

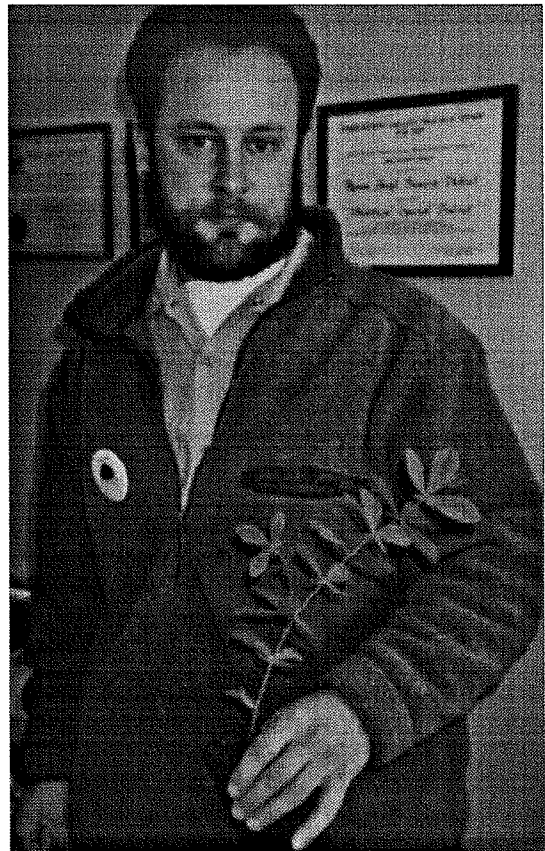
The freezing and thawing of the ground in March and early April helps to work the seed into the ground, making it unnecessary to roll or till previously worked ground.

The first prairie seedlings will appear during May. We will likely do some seedings this spring.

By April Fools Day or slightly afterward, the first wildflowers are beginning to grow on the prairie. By mid-April, the first flowers of the prairie appear.

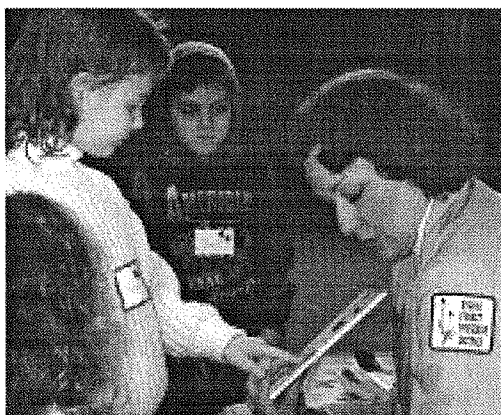
Pasque flowers, which resemble a downy crocus, are usually in full bloom, and the leaves of the shooting stars are beginning to appear.

These can be viewed along the Four Hills Trail and in the Lost Meadow, a clearing in the woods just southwest of the Jarrett Center. You will be able to view these first spring flowers on our first guided prairie walks at 8 am on April 8 and during Spring Fest on April 29.



*Pictured right-Naturalist Josh Skolnick shows off a Cream Indigo seedling, one of many at the Jarrett Prairie Center that he grew from the seeds picked by the Byron Forest Preserve District Volunteers.*

# NATURE CLASSES FOR KIDS!



Everything from woodchucks to wildflowers is on the agenda for the youngsters enrolled in our winter/spring session of Preschool Nature Classes at the Jarrett Prairie Center.

Education Coordinator Nancy Blank, who teaches the classes, said 28 preschoolers are currently enrolled, and she will continue to accept registrations.

Classes for 3 and 4 year-olds are offered from 9:30-10:30 a.m. on Tuesdays and Wednesdays. Classes for 4 and 5 year-olds are scheduled from 1:30-2:30 p.m. on Tuesdays. The cost of each one-hour class is \$3 per child.

In February, the youngsters learned about Woodchucks, What We Love About Nature, and Bears. March class topics are Coyotes, "Green" Plants and Stories, Maple Trees - Maple Syrup, and Toads and Frogs. In April, the youngsters will learn about Cottontail Rabbits, The Sun and the Moon, and Conservation/Earth Day. May

topics are Bluebirds, Animals and their Babies, Wildflowers, and The Prairie.

For more information, call 815/234-8535.

*Far left, teacher Nancy Blank assists Megan Dach with spreading peanut butter on a Valentine for the birds on Feb. 14.*

*At left, Caitlin Bohannon, Sarah Schoenhaar, Brent Boehner, and teacher Nancy Blank identify animal pictures.*

## Invasion of the Aliens: Garlic Mustard

**The Byron area is in danger of being overrun by aliens! These are not the usual Hollywood-style Martians or UFOs. Instead, our spring alien invasions come from a rather unassuming plant known as garlic mustard.**

**This plant was brought over from Europe and is a threat here without the pests and diseases which keep it under control there. That allows the plant to take over wooded areas and choke out our native spring wildflowers. It can also become a weed in perennial gardens in shady areas and underneath trees, including evergreens.**

**Garlic mustard starts to grow very early in the spring, before any native flower or plant starts to grow. This headstart allows the garlic mustard to shade out anything growing near it.**

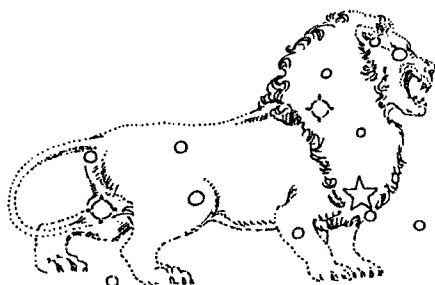
**In fact, due to warm temperatures in late February, garlic mustard is already green and growing in the wooded areas of the forest preserve.**

**Garlic mustard is quite easy to identify by its very strong garlic or onion smell when it is crushed (the plant can actually be used as greens-it is edible).**

**Garlic mustard is a serious threat to our wildflowers and may cause them to become extinct. Even if you live far from natural woods and oak savannas, garlic mustard can spread very quickly and infest natural areas far away by sticking to people, equipment and animals. It can also choke out garden perennials in shady areas, especially ferns. It rarely grows in sunny areas.**

**If you see this plant on your land, it is very important to get rid of it. If you would like more information or would like to help the Forest Preserve get rid of its garlic mustard, contact Byron Forest Preserve Naturalist Josh Skolnick at 815/234-8535.**

# Come See the Stars...



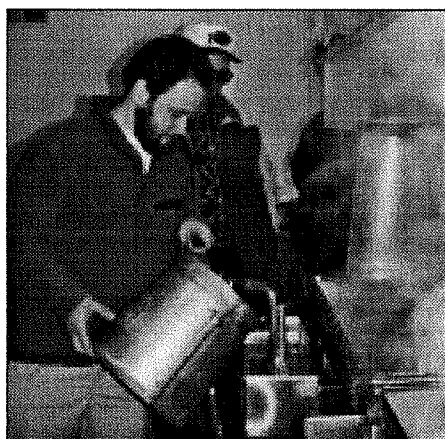
*The Lion can be seen in the southeastern sky in late March.*

Viewing night at the Weiskopf Observatory is Tuesday at dusk, if the skies are clear. Groups are welcome, but should call 815/234-8535 in advance to reserve the observatory.

Scout groups working to fulfill badge requirements should call in advance to arrange a sky viewing date.

Adults who are interested in astronomy are encouraged to attend Prairie View Astronomy Club meetings at 7 p.m. on the first Thursday of every month. Club members participate in special viewing nights and contribute to special astronomy programs.

The Lion constellation (left) is an early sign of spring and can be located by facing south and looking straight up in the sky. The Lion will appear on your left side at about 8 o'clock at night.



*Naturalist Josh Skolnick pours sap into the evaporator to boil it down to make syrup.*

## MAPLE SYRUP TIME

Continued from front page.

Howard Fox, Oregon, came over to lend his expertise in tapping 32 sugar maple trees. Forest Preserve Naturalist Josh Skolnick and the Park Maintenance crew, including Shawn Morrison, Don Hayenga and Charles Holeton pitched in, drilling the holes, placing the spigots, hanging the buckets, and then later going out to collect the buckets of sap.

The first two collections netted 100 gallons of sap, which boiled down to one and three-fourths gallons of pure maple syrup. The syrup will be sold in half-pint containers in the Jarrett Prairie Center Gift Shop.

Outdoor Education classes from Byron Schools will get into the act in March when students will spend time at the forest preserve watching the collection process in the woods and the boiling operation in the Expo Building at Heritage Farm.

## VOLKSMARCH AT LOWDEN MILLER MAY 13

Don't miss the Rock River Valley Volkssporters' 10 kilometer (6.2 miles) event on Saturday, May 13. The Volksmarch is being held at Lowden Miller State Forest, formerly known as Sinnissippi Forest, Oregon.

The entire forest covers 2,225 acres of land. This walk will take you on existing trails which are marked for convenience and there will also be a map which you can follow with some points of interest marked on it for those who are interested in the history of the forest and what species of plants and trees are growing in the forest soil.

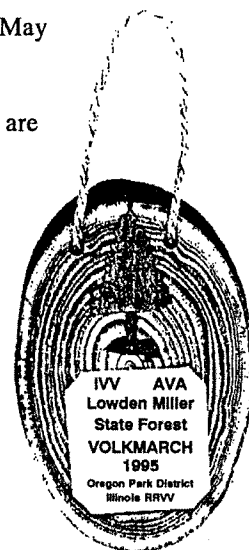
The event is free, however, if you are interested in the award or if you collect IVV "credit" stamps, the fees are as follows: Award & IVV Credit is \$6, IVV Credit Only is \$2, Participation without Award or Credit is FREE.

The award (pictured at right) for this event is an original piece. Each award is individually designed by Howard Fox, local woodworker and historian.

The main piece of wood is actually a cross-cut piece of red elm from the state forest you will be walking through. The tree is a marquetry piece made from tulip tree, walnut and Brazilian rosewood. To complete the award is an inscribed gold plate which commemorates the event.

The Rock River Valley Volkssporters Club is sponsored by the Byron Forest Preserve, and usually meets bimonthly at either the Jarrett Prairie Center or the Oregon Park District.

For a complete brochure of the May 13 event, for more information on this and upcoming Volksmarching events, or for information regarding the Rock River Valley Volkssporters Club, please contact Debbie Leffelman at (815) 732-3101.





# CALENDAR OF EVENTS

## MARCH

2  
2, 7, 9, 14, 16,  
21, 23, 28, 30  
4  
7, 8, 14, 15,  
21, 22, 28, 29  
7, 14, 21, 28  
7, 14, 21, 28  
7, 14, 21, 28  
11  
16  
18  
19  
21  
23  
23  
25

Astronomy Club Meeting - 7 PM - Weiskopf Observatory  
Senior Exercise Class - 11:15-11:45 AM - Jarrett Prairie Center  
Golf Exercise Seminar - 1-4 PM - JPC  
Nature Preschool (age 3-4) - 9:30-10:30 AM - JPC  
District Volunteers - 8:30 AM - JPC  
Nature Preschool (age 4-5) - 1:30-2:30 PM - JPC  
Public Sky Viewing - 7-9 PM - Weiskopf Observatory  
Second Saturday Folk Concert - *Carol Montag* - 8 PM - JPC  
Rock River Valley Wild Ones Meeting - 6-9 PM - JPC  
Harmonica Workshop - 1-4 PM - JPC  
Dog Motivation and Thought Seminar - 1-4 PM - JPC  
Byron Forest Preserve District Board Meeting - 7:30 PM - JPC  
Wellness Fair at Byron High School - 2-7:30 PM  
Boating Safety Class - 6-9 PM - JPC  
Boating Safety Class - 8 AM-NOON - JPC

**SIGN UP NOW!!**  
**234-8535**



**Advance  
Registration  
Required**

## APRIL

4, 5, 18, 19,  
25, 26  
4, 11, 18, 25  
4, 11, 18, 25  
4, 18, 20, 25, 27  
5  
6  
8  
8  
11  
16  
18  
20  
20  
23  
27  
29

Nature Preschool (age 3-4) - 9:30-10:30 AM - Jarrett Prairie Center  
District Volunteers - 8:30 AM - JPC  
Public Sky Viewing - Dusk - Weiskopf Observatory  
Senior Exercise Class - 11:15-11:45 AM - JPC  
**PRAIRIEVIEW OPENS FOR 1995 GOLF SEASON!**  
Astronomy Club Meeting - 7 PM - Weiskopf Observatory  
Early Spring Bird/Flower Hike - 8-10 AM - JPC  
Second Saturday Concert - *Richard Shindell* - 8 PM - JPC  
Hauser-Ross Eye Screening - 55 or older - 1:30-3 PM - JPC  
**JARRETT PRAIRIE CENTER CLOSED - HAPPY EASTER!!**  
Byron Forest Preserve District Board Meeting - 7:30 PM - JPC  
Painting By Marsha (Spring Scene) - 6-9 PM - JPC  
Rock River Valley Wild Ones - 6:30-8:30 PM - JPC  
Rock River Valley Beekeepers - 1-4:30 PM - JPC  
Celebrate Life Seminar - 8 AM-1 PM - Targeted for Senior Citizens - JPC  
SpringFest - 8:30 AM-5 PM - Prairie Preserve and JPC



## MAY

2, 3, 9, 10,  
16, 17, 23, 24  
2, 4, 9, 11, 16,  
18, 23, 25  
2, 9, 16, 23  
2, 9, 16, 23, 30  
2, 9, 16, 23, 30  
3  
4  
13  
13  
16  
18  
25

Nature Preschool (age 3-4) - 9:30-10:30 AM - Jarrett Prairie Center  
Senior Exercise Class - 11:15-11:45 AM - JPC  
Nature Preschool (age 4-5) - 1:30-2:30 PM - JPC  
District Volunteers - 8:30 AM - JPC  
Public Sky Viewing - Dusk - Weiskopf Observatory  
Bats in Belfry - Why and What To Do - 7-8:30 PM - JPC  
Astronomy Club Meeting - 7 PM - Weiskopf Observatory  
Volksmarch sponsored by the Byron Forest Preserve District  
Second Saturday Concert - *Carrie Newcomer* - 8 PM - JPC  
Byron Forest Preserve District Board Meeting - 7:30 PM - JPC  
Rock River Valley Wild Ones - 6:30-8:30 PM - JPC  
Wildflower Photography - 6-8:30 PM - JPC



# *Spring Concerts...*

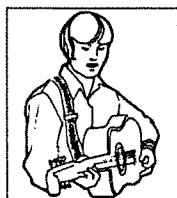


Carol Montag  
March 11 at 8 PM  
Jarrett Prairie  
Center

*If you're looking for a great night out* to chase away late winter gloom, pick up your spirits and the beat at our Second Saturday Concerts.

Carol Montag, a singer and songwriter from Cedar Rapids, Iowa, will serve up original, traditional and contemporary folk tunes in her crystal clear soprano from the stage at the Jarrett Prairie Center at 8 p.m. on Saturday, March 11.

Tickets are \$7 each and may be purchased at the door. For reservations and information, call the Jarrett Prairie Center at 815/234-8535.



Richard Shindell  
April 8 at 8 PM  
Jarrett Prairie  
Center

The monthly folk concerts have been well-received since they premiered a year ago. More than 100 people braved the sub-zero temperatures and wind chill to watch Mark Dvorak perform on Feb. 11.

Richard Shindell will appear on Saturday, April 8, and Carrie Newcomer will return on Saturday, May 13 to wrap up this concert series.

Newcomer kicked off the first Second Saturday Concert series last March when she played to a standing room only crowd at the Jarrett Prairie Center.

The concerts are co-sponsored by the Byron Forest Preserve and Backpack Concerts, Rockford.



Carrie Newcomer  
May 13 at 8 PM  
Jarrett Prairie  
Center

**BYRON FOREST PRESERVE DISTRICT  
7993 N RIVER RD  
P O BOX 1075  
BYRON IL 61010-1075**

**BULK RATE  
U S POSTAGE PAID  
BYRON IL 61010  
PERMIT NO 50**

**POSTAL PATRON  
BYRON IL 61010**



# BYRON FOREST PRESERVE DISTRICT NEWS

George Ashby, Board President  
Dr. Robert Johnson, Vice President  
Gene Smith, Secretary  
Fred Brune, Treasurer  
Robert Severson, Commissioner

Edward C. Clift, Executive Director  
Vinde Wells, Managing Editor  
Michelle Lipps, Editor

1995

PRESERVATION - EDUCATION - RECREATION

SUMMER

## Third Annual Civil War Days

The Union's Battery G of the Second Illinois Light Artillery, the Midwest's largest and most authentic Civil War unit, will battle the Confederacy's Eighth Tennessee on Saturday, July 15 and Sunday, July 16 at the Byron Forest Preserve's third annual Civil War Days.

The two-day event will include living history encampments and battle demonstrations. The Byron Forest Preserve is located at 7993 N. River Rd., Byron, one-quarter mile west of Illinois 72 and North German Church Road.

Johnny Reb will charge from the woods to engage the Yankee troops in a grassy meadow near the Jarrett Prairie Center. Battle reenactments will take place at 3 p.m. on July 15 and 2 p.m. July 16.

Activities on July 15 will also include a 19th century fashion show from 12-12:30 p.m., a cannon shooting demonstration at 1 p.m., followed by a band playing Civil War era music both before and after the 3 p.m. battle, and then candlelight and lantern tours of the campsites after dark. The campsites will also be open for tours from 10 a.m.-dusk.

The J. Weiskopf Observatory will be open for skyviewing on July 15 until 10 p.m. when the forest preserve closes to the public.

July 16 activities will include a cannon shooting demonstration at noon again followed by the band before and after the 2 p.m. battle. The campsites will be open for tours from 10 a.m.-4 p.m.

Battery G appeared in the movie **Gettysburg** and has participated in several reenactments of major battles in the East and South, including those at Gettysburg, Shiloh, The Wilderness, Chickamauga, Franklin and Appomattox.

Battery G will fire a 20-pound cannon which was actually used in the Siege of Vicksburg. The cannon is authentic in every detail. Its present carriage was rebuilt using U.S. government blueprints.

Concessions will be on sale throughout the two-day event. Admission is \$5 per car or \$1 each for walk-ins.



## *A Message from the Executive Director*

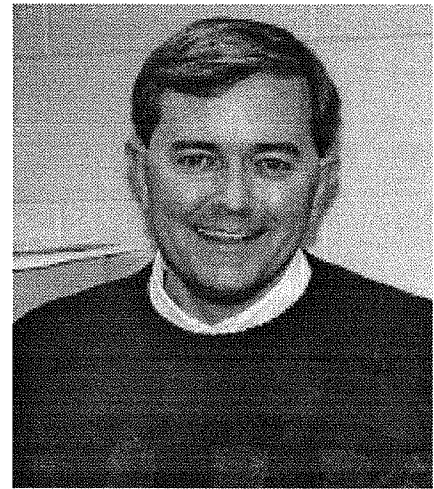
Greetings! It is an honor to have been chosen by the Board of Commissioners to lead the Byron Forest Preserve into the future, and I look forward to working with interested citizens, the board, and staff to carry out our important work of this agency. Since success does not normally result from one individual, we will strive to create a "team philosophy" that emphasizes listening to all viewpoints prior to making a final decision.

In this newsletter, you will see some major changes in format and program offerings. We have listed all our programs in catalog-style, for quicker reference and ease of registration. Regular programs will be offered for 4, 6, 8, or 10 week periods, and registration for these activities will be during a standard registration period that will be for a minimum of 15 days. Residents will also be able to either drop off their registration form at the Jarrett Center or mail it to us. Our hope is that all of these changes will make it easier for you to take advantage of our outstanding facilities and programs. Please let us know how it works!

We are in the process of moving some staff (Finance, Media, Administrative) back into the farmhouse that we used as an office several years ago. This move will provide more programming space at the Jarrett Prairie Center, by adding two more classrooms for expanded programs. This move should happen sometime in July. Watch for increased programming in the Fall Newsletter.

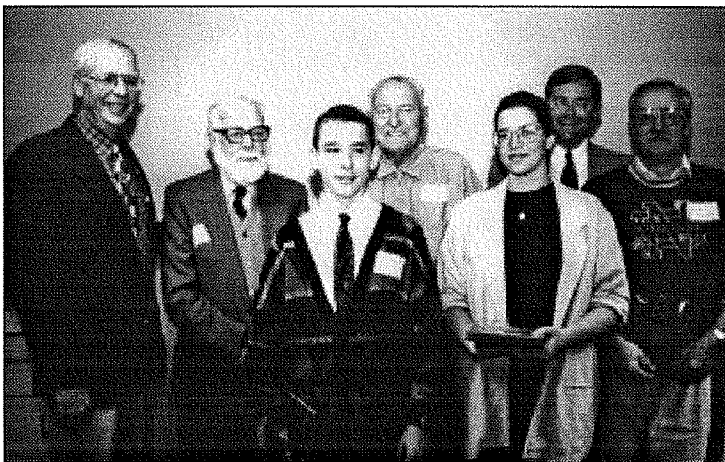
The 1993 Community Survey showed a large number of residents (32-42%) who desired for the Jarrett Prairie Center to be open to the public after 5 PM Monday through Saturday. Because of this response, we are looking to expand the hours into the evening beginning in September. This will make the Prairie Center more accessible to working families in our community. The details for these expanded hours will be published in the Fall Newsletter.

Our hope is that these changes will assist us by serving you better and making it easier for you to take advantage of the wonderful opportunities at the Byron Forest Preserve. As part of our "open door" policy, if at any time you have any questions, concerns, or suggestions, please feel free to contact me or any of our staff for assistance. Thank you and we look forward to seeing you at YOUR Forest Preserve!



*Edward C. Clift, Executive Director*

## *Volunteers Recognized - April 24!!*



**Special Awards** went to - Left - L-R - (front) Mike Lipps-100th Volunteer, Christa Hess-Junior Volunteer of the Year, (back) John Zaleskas-Beekeeper, Bill Post-Senior Volunteer of the Year, and Jim Hess-Taxidermist. Also pictured are (far left) Jim Jennings, Former Board President and (back row, right) Ed Clift, Executive Director.



**More than 300 Hours of Service Awards** went to - Right - L-R - (front) Jim Jennings and Verna Seymour. Also pictured are (back row, middle) Nancy Blank-Education Coordinator, (back row, right) Ed Clift, Executive Director, and (front row, right) Betty Fetzer, Former Volunteer Coordinator.

# Registration Information

## Registration Information

### I. Mail-In

Byron Forest Preserve District  
P O Box 1075  
Byron IL 61010-1075

Registrations received before the first registration day will be processed with the following day's mail.

### II. Walk-In

Hours: Monday-Saturday - 8 AM-4:30 PM and Sunday - 1-4:30 PM.

Walk-In to the Jarrett Prairie Center, 7993 North River Road, Byron. The receptionist can answer questions and give receipts for cash payments. Registrations are time-stamped in the order they are received. Note: Walk-In registrations are processed after the drop off registrations.

### III. FAX

Faxed registrations are accepted 24 hours per day at (815) 234-4150. When faxing a registration, payment must be made with VISA.

## Nonresident Registration Information

Persons living outside the Forest Preserve District boundaries have the option of paying \$5 more than the resident rate for most programs and facilities.

**Nonresident program registration** begins one week after resident registration.

**Nonresident trip registration** begins the day after resident trip registration. Youth/Family trip registration coincides with program registration.

**Nonresidents** can pay a yearly fee of \$75, which will give them "resident" status. Please contact the Byron Forest Preserve District for detailed information, (815) 234-8535.

## Byron Forest Preserve District Registration

**District Residents:**

Begins June 5

**Nonresidents:**

Begins June 12

**Programs Begin:**

June 10

**Late Registrations are accepted until program/class is full.**

## Program Registration Information

1. If the program you choose is filled, you will be given your second choice class.

2. If both choices are filled or you did not list a second choice, you will be put on a waiting list and payment will be refunded.

3. If an opening occurs, you will be contacted by phone and re-registration will be required.

4. If the program has been cancelled or changed, you will be contacted by phone and payment will be refunded.

5. All registrations must be completed on the proper registration form with the waiver on the back signed.

6. Early registration will be held until the second registration day.

## Payment Information

1. Visa and Mastercard are available for full payments only.

2. The Forest Preserve reserves the right to change a payment fee to reflect the correct fee.

3. If program fees differ between your first and second choice, pay the higher fee. If you are enrolled in the program with the lower fee, the Forest Preserve will refund the difference.

## Trip Registration

**Youth & Family Trips Registration** coincides with program registration dates. Trips that were offered during a previous session have "on-going" registration until filled. Nonresident Trip Registration is the following day.

**Refunds** can only be given for trips if you notify the Forest Preserve 48 hours in advance and your spot can be filled. All refunds are subject to a \$5/person service fee.

**Seating** - If you wish to sit with someone on the bus, place both registration forms in the same envelope, or have them attached to each other.

## Refunds

1. **Satisfaction Guaranteed** - Participants will receive a full refund if they are dissatisfied with the program after the first class meeting, but before the second.

2. Once a class has met a second time, no refunds will be issued. Exception: Illness or a relocation.

3. If a refund is approved after a second class meeting it is subject to a \$5 service charge.

4. A refund request form must be completed.

5. Refunds take approximately two weeks to process and are mailed in check form or credited to your credit card account.

5/30/95



# Upcoming Programs

## Special Events

**Civil War Days** - Come see the living history encampments, battles, cannon demos, fashion show, and listen to music of this era. Wildflower tours will begin at 10 am on both days. Refreshments will be available.

**Jarrett Prairie Ctr & Preserve**  
**Saturday July 15**  
 10 am-Dusk  
**Sunday July 16**  
 10 am-4 pm  
 Fees: \$5/car or \$1/walk-in

**Second Saturday Concert** - Lou and Peter Berryman will make their second appearance at the Jarrett Prairie Center. The Berrymans have delighted audiences from coast to coast with their refreshing observations on the human condition in a style blending folk music with musical comedy. The concert will be outdoors, weather permitting.

**Jarrett Prairie Center or Outdoor Prairie Stage**  
**Saturday 8 pm August 12**  
 Fee: \$8/adult \$2/child  
 Family maximum - \$20



## Walks

**Bird Walks** - These easy walks take bird watchers through the prairie and woods to identify native birds. Bird books are available at the Jarrett Prairie Center Gift Shop.

**Prairie Preserve**  
**Saturdays June 10**  
 8-10 am **July 8**  
 Fee: \$2 **August 5**  
 Min. 3/Max. 12  
 Instructor: Lisa Johnson

## Walks

### Summer Prairie Walk -

This walk will take you through the prairie and woods to identify native prairie plants. Prairie plant books are available at the Jarrett Prairie Center Gift Shop.

**Prairie Preserve**  
**Saturday June 17**  
 Fee: \$2 **8-10 am**  
 Min. 3/Max. 15  
 Instructor: Josh Skolnick

**Night Prairie Hike and Sky Viewing** - Come find out what happens on the prairie on a warm summer night. Listen for night sounds and watch for evening animals. If it's clear, view the stars at the Weiskopf Observatory.

**Prairie Preserve**  
**Friday July 7**  
 Fee: \$2 **9-11 pm**  
 Min. 6/Max. 25  
 Instructor: Josh Skolnick



**Nature Friends Summer School** - Play games, participate in hands-on activities, and hear stories about the animals and plants that live on the prairie and in the woodlands.

**Jarrett Prairie Center**  
**June 13, 20, 27 July 11, 18, 25**  
 Age 3-4 **Tues. 9:30-10:30 am**  
 Age 4-5 **Tues. 1:30-2:30 pm**

**June 14, 21, 28 July 12, 18, 26**  
 Age 3-4 **Wed. 9:30-10:30 am**  
 Age 6-7 **Wed. 1:30-2:30 pm**

Fees: \$24/session - resident  
 \$30/session - nonresident  
 Min. 6/Max. 10  
 Instructor: Nancy Blank

## Youth Activities

### Nature Detectives Day Camp -

Children entering 1st-3rd grades can discover and explore the prairie, woodland, and river to find out what these places are like. Find out what animals and plants make these natural places their home.

**Jarrett Prairie Center**  
**Mon.-Fri. July 31-August 4**  
 9 am-Noon  
 Residents: \$40  
 Nonresidents: \$45  
 Min. 10/Max. 20  
 Instructor: Susan Kleiman

### Earth Explorers Day Camp -

Children entering 4th-6th grades can join the ranks with the great explorers and encounter the wild, weird, and wonderful creatures that roam the prairie and the woodlands.

**Jarrett Prairie Center**  
**Mon.-Fri. August 7-11**  
 9am-Noon  
 Fees: \$40 - residents  
 \$45 - nonresidents  
 Min. 10/Max. 20  
 Instructor: Susan Kleiman

**Junior Naturalist Class** - Students (age 11-13) will learn about plants of the prairie, identify noxious weeds, and learn how to better care for our planet.

**Prairie Preserve**  
**M W F June 19, 21, 23**  
**4-5 pm 26, 28, 30**  
 Fees: \$15 - resident  
 \$20 - nonresident  
 Min. 5/Max. 15  
 Instructor: Christa Hess



More Activities - Page 5

## Junior Classes

**Junior Gardening Class -**  
*Students (age 8-10) will learn about plants and what makes them grow.*

**Jarrett Prairie Center**

**M W F July 3, 5, 7**  
**4-5 pm 10, 12, 14**

**Fees: \$15 - resident**  
**\$20 - nonresident**

**Min. 5/Max. 15**

**Instructor: Christa Hess**

**Junior Nature Photography Class -**  
*Students (age 11-13) will find and frame subjects with the camera both indoors and outdoors. They will also experiment with print paper.*

**Jarrett Prairie Center**

**Sundays 1-4 pm July 23, 30**

**Fees: \$10 - resident**  
**\$15 - nonresident**

**Min. 5/Max. 10**

**Instructor: Christa Hess**

**Junior Nature Drawing Class I -**  
*Part I - Simply Sketch - Students (age 8-10) will learn how to make wonders with simply pencils and paper. Part II - Color It - Explore the magic of color pencils.*

**Jarrett Prairie Center**

**Saturdays 9-11 am July 22, 29**

**Fees: \$10 - resident**  
**\$15 - nonresident**

**Min. 5/Max. 10**

**Instructor: Christa Hess**

**Junior Nature Drawing Class II -**  
*Part I - Sketch Too - Students (age 11-13) will get an advanced knowledge of sketching. Part II - Color Plus - Colorize and blend colors to their own cards.*

**Jarrett Prairie Center**

**Saturdays 1-3 pm July 22, 29**

**Fees: \$10 - resident**  
**\$15 - nonresident**

**Min. 5/Max. 10**

**Instructor: Christa Hess**

## Junior Classes

**Junior Sculpting Class I - Part I -**  
*Sculpt-a-Rama - Students (age 8-10) will enjoy using modeling clay and tools to create art. Part II - Finishing Touch - Complete the sculptures with a painted finish.*

**Jarrett Prairie Center**

**Saturdays 9-11 am July 1, 8**

**Fees: \$10 - resident**  
**\$15 - nonresident**

**Min. 5/Max. 10**

**Instructor: Christa Hess**

**Junior Sculpting Class II - Part I -**  
*Way Clay - Students (age 11-13) will explore the uses of clay and modeling tools, making a sculpture. Part II - Ink Blox - Carve out and print with ink blocks.*

**Jarrett Prairie Center**

**Saturdays 1-3 pm July 1, 8**

**Fees: \$10 - resident**  
**\$15 - nonresident**

**Min. 5/Max. 10**

**Instructor: Christa Hess**

**Junior Painting Class I - Part I -**  
*Watercolor Wonder - Students (age 8-10) will learn the basics of watercolor prints and create a raised design poster. Part II - Acrylic Art - Experience working with acrylic paints and design a beaded necklace.*

**Jarrett Prairie Center**

**Saturdays 9-11 am June 17, 24**

**Fees: \$10 - resident**  
**\$15 - nonresident**

**Min. 5/Max. 10**

**Instructor: Christa Hess**

**Junior Painting Class II - Part I -**  
*Watercolor Plus - Students (age 11-13) will master the world of watercolor art. Part II - Acrylic Too - Make a puzzle, using acrylic paints.*

**Jarrett Prairie Center**

**Saturdays 1-3 pm June 17, 24**

**Fees: \$10 - resident**  
**\$15 - nonresident**

**Min. 5/Max. 10**

**Instructor: Christa Hess**

## Wildlife Classes

**How To Attract Butterflies and Hummingbirds -**  
*Learn about the beautiful plants you can grow to attract these wonderful creatures.*

**Jarrett Prairie Center**

**Saturday June 17**  
**Fee: \$2 10-11 am**

**Min. 3/Max. 30**

**Instructor: Josh Skolnick**

**Walleye & Catfishing the Rock -**  
*Tips and techniques for fishing on the Rock River.*

**Jarrett Prairie Center**

**Thursday July 20**  
**Fee: \$5 7-8:30 PM**

**Min. 6/Max. 60**

**Instructor: Ed Ortgiesen**

**Wildlife Rehabilitation -**  
*Learn what kinds of animals live in your neighborhood. Find out if they are common to this area and if they are nuisance wildlife. Also learn about wildlife babies and what to do with them.*

**Jarrett Prairie Center**

**Friday 7-8 pm June 30**

**Fees: \$2/adult \$1/child**  
**Family maximum - \$6**  
**Min. 10/Max.**

**Instructor: Sally Baumgardner**

## Astronomy

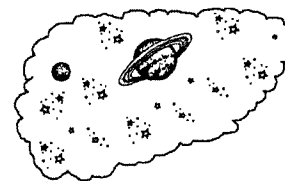
**Public Sky Viewing -**  
*Explore the constellations all year 'round.*

**Weiskopf Observatory**

**Tuesdays Dusk**

**Fee: Free**

**Instructor: Josh Skolnick**



*More Activities - Page 6*

## Astronomy

**Solar Days - With Dr. Jerome Weiskopf's** recent donation of a sophisticated solar filter, a whole new area of sky viewing has been made possible. This filter screens out all but a very narrow band of light making direct observation of the surface of the sun possible.

### Weiskopf Observatory

**Sundays** June 4  
**2-4 pm** August 6  
**Saturday** July 22  
**1-3 pm**  
**Fee: Free**  
**Instructor: Mickey Bowman**

**Meteor Shower - Following the Berryman concert,** enjoy nature's fireworks from the lawn or the Weiskopf Observatory will open for sky viewing.

### Weiskopf Observatory

**Saturday** August 12  
**Approx. 10 pm**  
**Fee: Free**  
**Instructor: Mickey Bowman**

## Clubs & Trips

**Prairie View Astronomy Club -** Monthly meetings are held at the Weiskopf Observatory.

**First Thursdays** 7 pm  
**Fee: Free**

**Rock River Valley Wild Ones -** Monthly meetings are held at the Jarrett Prairie Center.

**Third Saturdays** Time: TBA  
**Fee: Free**  
**Instructor: Josh Skolnick**



## Clubs & Trips

**Rock River Valley Wild Ones -** The following field trips and tours will be held.

• **Nachusa Grasslands Tour** led by Sally Baumgardner. Carpool from the Jarrett Prairie Center.

**Saturday** June 24  
**Fee: Free** 9 am-1 pm  
**Min. 2/Max. 25**  
**Instructor: Sally Baumgardner**

• **Help Me Day -** Meet at Jarrett Prairie Center and tour local yards to get new ideas and offer advice.

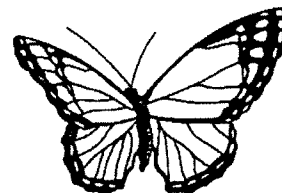
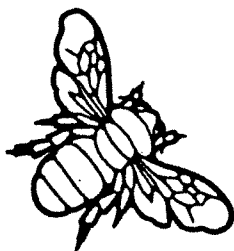
**Saturday** July 22  
**Fee: Free** 9 am  
**Min. 2/Max. 25**  
**Instructor: Josh Skolnick**

• **Milwaukee Tour of Wild Ones Yards.** Meet at Jarrett Prairie Center and carpool to Milwaukee.

**Saturday** August 12  
**Fee: Free** 6 am-6 pm  
**Min. 2/Max. 25**  
**Instructor: Josh Skolnick**

• **Wildflower Walk -** Tour of the Byron Forest Preserve prairies.

**Saturday** August 19  
**Fee: Free** 9 am  
**Min. 2/Max. 25**  
**Instructor: Josh Skolnick**



## Other Activities

**Beginning Woodcarving -** Learn to use a pocket knife to do several projects. To register, call (815) 234-8535.

### Jarrett Prairie Center

**Saturday** July 22  
**9 am-Noon** Fee: \$10  
**Min. 6/Max. 12**  
**Instructor: Mickey Bowman**

**Prairie Volunteers -** Volunteers of all ages are welcome to join this ever-growing group to help process seeds, build birdhouses, assist with golf course maintenance, and many other enjoyable tasks.

### Jarrett Prairie Center

**Tuesdays** 8:30-11:30 am

**Birthday Parties -** Begin in August. Contact us at least two weeks or more in advance of your child's birthday and we'll plan the party for you. Choose one of three themes: Buffalo/Native Americans, Reptiles, or Birds. Parties are one and a half hours long and are held for children turning 5-10 years old. Dates are available on a first come, first serve basis. To schedule a party, call (815) 234-8535.

### Jarrett Prairie Center

**Resident** \$50  
**Nonresident** \$55  
**Min. 10/Max. 20**

**Instructor: Christa Hess**

Prices are based on 10 children.  
 Add \$2.50/child over 10 children.

# What's Happening on the Summer Prairie?!

By Josh Skolnick, Naturalist

This is the big nesting season now. Some bird species are already on their second batch of babies.

The bluebird boxes are hosting families of bluebirds, tree swallows and wrens. The first set of bluebird babies have fledged and the adults are caring for their second brood now.

The common yellowthroats and diccissels are nesting on the prairie and rose-breasted grosbeaks and rufous-sided towhees are nesting in the woods, to name only a few.

The air is full of the songs of our summer residents, red-winged blackbirds, great crested flycatchers, Baltimore orioles, indigo buntings and many more. Come out and listen and look for a while.

As the summer progresses, wave after wave of spectacular wildflowers appear on the native prairie.

In June, the rolling terrain along the Four Hills Trail and on the trail running downhill towards the dragstrip is dotted with patches of the beautiful pale purple coneflower, part of the Byron Forest Preserve logo. The root systems are a highly effective herbal medicine - but please do not collect any here, as our prairie is a nature preserve to be saved for future generations.

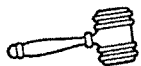
Other beautiful prairie plants appearing in June are the white false indigo, prairie cinquefoil, the yellow false sunflower, the purples of the Hills thistle, the bright yellow of the prairie coreopsis, the electric orange and purple flower heads of the leadplant, and the brilliant purple prairie clover.

July brings the eight-foot high flower stalks of the sunflower-like compass plant (the roots can go as deep as 18 feet!), the colorful light purple bergamot, the bright

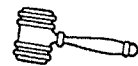
yellow of the yellow coneflower, the purple of the hoary vervain, and the continued blooms of many of the June plants.

The last hot month of the year, August, closes with the brilliant pink spikes of the rough blazingstar, the curious western sunflower, with its leafless flowering stems and yellow flower, and the yellow wands of the showy goldenrod.

For a closeup look at these native wildlife and plant species plus many more, join our guided tours through the prairie and woods. Bird walks are scheduled June 10, July 8 and August 5. Wildflower walks will be held on June 17, July 15 & 16 and August 19. For more details, please check the program listings in this newsletter.



## Newly Elected Board



The Byron Forest Preserve District's first elected Board of Commissioners was sworn in at a special meeting on May 1. Ogle County Clerk Jean Wolfe administered the oath of office to Commissioners George Ashby, Fred Brune, Dr. Robert Johnson, Robert Severson and Gene Smith.

Voters had the privilege of electing their forest preserve commissioners for the first time when they went to the polls on April 4. Prior to this, the board was appointed by the Ogle County Board.

Following the swearing in ceremony, Wolfe drew names to determine which commissioners will serve four-year terms and which will serve for two years. Brune, Johnson and Smith received four-year terms, while Ashby and Severson received two-year terms.

In the future, all terms will be four years in length with elections held in the spring of odd-numbered years.

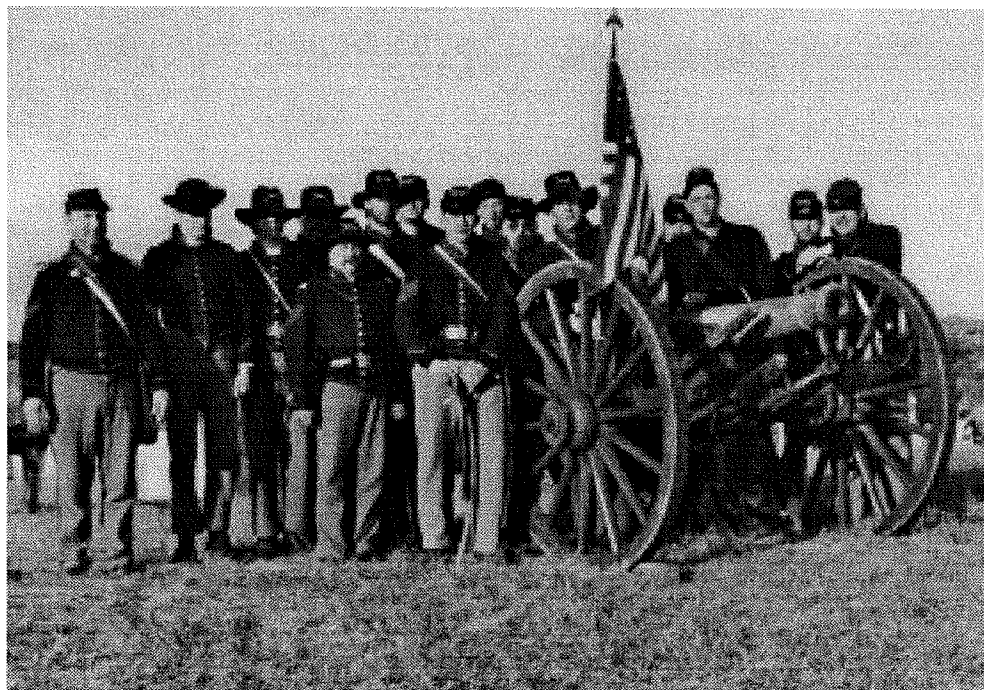
Once seated, the new board elected Ashby its president, Johnson vice-president, Smith secretary and Brune treasurer.

Byron Forest Preserve regular board meetings are held at 7:30 p.m. on the third Tuesday of every month in the Prairie View Room at the Jarrett Nature Center.

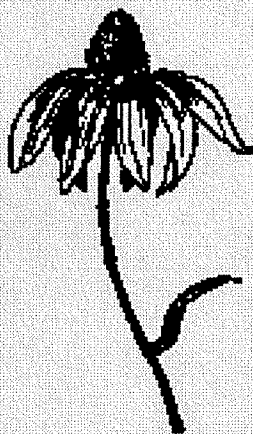


*Taking the Oath - Ogle County Clerk Jean Wolfe (far right) swears in (l-r) Commissioner Robert Severson, Vice President Dr. Robert Johnson, Treasurer Fred Brune, Secretary Gene Smith, and President George Ashby.*

# Civil War Days - July 15-16



## ***INSIDE...***



### ***DISTRICT NEWS***

- ***NEW SUMMER PROGRAMS*** **PAGES 3-6**
- ***PRAIRIE BURSTS WITH NEW LIFE & COLOR*** **PAGE 7**
- ***ELECTED BOARD SWORN IN*** **PAGE 7**

### ***PRAIRIEVIEW GOLFER***

- ***AUDUBON SANCTUARY PROGRAM*** **PAGE 1**
- ***FIRST HOLE-IN-ONE*** **PAGE 2**
- ***JUNIOR NEWS*** **PAGE 4**

BYRON FOREST PRESERVE DISTRICT  
7993 N RIVER RD  
P O BOX 1075  
BYRON IL 61010-1075

BULK RATE  
U S POSTAGE PAID  
BYRON IL 61010  
PERMIT NO 50

POSTAL PATRON  
BYRON IL 61010





# BYRON FOREST PRESERVE DISTRICT NEWS

George Ashby, Board President  
Dr. Robert Johnson, Vice President  
Gene Smith, Secretary  
Robert Severson, Treasurer

Edward C. Clift, Executive Director  
Vinde Wells, Managing Editor  
Michelle Lipps, Editor

1995

PRESERVATION - EDUCATION - RECREATION

FALL

## ***The Berrymans Are Back!***



The stars will definitely be out at the Byron Forest Preserve on Saturday, Aug. 12. Folksingers Lou and Peter Berryman will kick off the forest preserve's 1995-96 Second Saturday Concert series when they star on the outdoor Prairie Stage at 8 p.m. Following the concert, the J. Weiskopf Observatory will be open for public viewing of a meteor shower.

This will be the Berrymans' second appearance at the Byron Forest Preserve. They wrapped up the 1994 spring Second Saturday series with a May performance.

The Berrymans, who hail from Wisconsin, are noted for their sophisticated and wickedly funny original song writing which blends the best melodic and lyric aspects of musical comedy, cabaret and folk music. Their unique style and wit has pleased audiences for nearly 20 years.

Lou and Peter have been friends since 1963 when they met in art class and then began their musical partnership in the first of a long series of musical groups. They played many different kinds of music - folk, jug band, old-time, and even blues and rock and roll.

Their friendship survived a brief marriage, and the musical duo as it exists today was formed around 1975. Their latest recording, *Double Yodel*, was released this spring.

In case of inclement weather, the performance will be held in the Jarrett Prairie Center.

Tickets for the performance are \$8 for adults, \$2 for children, or a maximum of \$20 for a family. For reservations and ticket information, call the Jarrett Prairie Center at 815/234-8535.

## **New Administrative Center**

The Forest Preserve staff has been on the move - literally. The Administration Department moved from the Jarrett Prairie Center into its newly remodeled quarters in the Administrative Center, also known as The Farmhouse, on July 19.

Executive Director Edward Clift, Executive Secretary Cathie Francis, Finance Coordinator Sherry Hartzell and Finance Assistant Andrea Anderson are settled into their offices on the second floor. The offices of Media Coordinator Vinde Wells and Media Assistant Michelle Lipps are on the main floor.

Renovations included repositioning walls inside the farmhouse, painting, and carpeting. A new sidewalk and handicapped accessible ramp were installed outside the main entrance for the public.

The basement has also been finished and will be used for media production projects and record storage.

The move makes way for program and museum expansion at the Jarrett Prairie Center. Renovations there are scheduled to begin in mid-August.

## *A Message from the Executive Director*

Another outstanding summer is about to conclude with thousands of patrons taking advantage of the Jarrett Prairie Center/Museum, Weiskopf Observatory, PrairieView Golf Course, and all of our beautiful outdoor trails and nature at the Forest Preserve. Now that Fall is quickly approaching, we have exciting opportunities for all ages (pre-school to seniors) for YOU and YOUR family. Please keep in mind that our Forest Preserve is only as successful as the volunteerism that the community gives to help us accomplish our goals. Be Involved - VOLUNTEER TODAY!

### **NEW PUBLIC HOURS AT THE JARRETT CENTER**

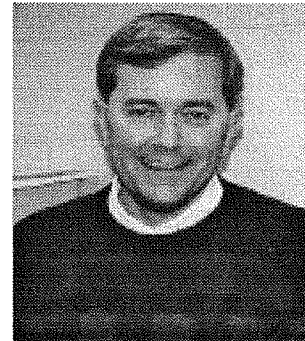
Beginning this Fall, our hours at the Jarrett Prairie Center will increase as a direct response from the overwhelming citizen comments on the 1993 Community Survey. The hours for both the Jarrett Prairie Center and Administration Center are listed below:

#### **Jarrett Prairie Center**

Monday - Thursday	8:30 A.M. to 8:30 P.M.
Friday	8:30 A.M. to 4:30 P.M.
Saturday	8:30 A.M. to 4:30 P.M.
Sunday	1:00 P.M. to 4:30 P.M.

#### **Administrative Center (Old Farmhouse)**

Monday - Friday	8:00 A.M. to 4:30 P.M.
-----------------	------------------------



*Edward C. Clift, Executive Director*

### **JOINT VENTURES**

It is a pleasure to announce that the Forest Preserve Commissioners have endorsed, and are co-sponsoring, two major local projects that have been launched this past month. First, we will be working with the Byron Lions Club to build a handicapped fishing pier and parking lot on our property along the Rock River. This project will also enhance fishing for all residents that wish to use it. We are currently obtaining local and federal permits and hopefully construction will begin this year or in 1996. Secondly, we have agreed to work with the Byron Park District and Byron Bike/Walking Path Committee to plan phase II of the current bike path. This much needed addition will improve the safety for all our bikers and walkers in Byron. Please become involved in this community venture, as more details become available.

### **LEGISLATIVE/FINANCIAL**

The past few months, the Forest Preserve Commissioners and Staff have been monitoring legislation and property tax appeals that could have an effect on the Byron Forest Preserve. The most serious is Senate Bill 948 which deals with the interest earned on our self insurance bond. This bond was issued in May of 1992, to serve two purposes for our residents. First, it was to provide a 4 million dollar self insurance protection against any large liability judgements against the Forest Preserve. The second purpose was to use the interest off the bond beginning in the year 2001, to offset the annual 3% reduction each year in the property taxes paid by our largest industry over the next 30 years. The Board/Staff in 1992 implemented a plan that made sense, and created a means by which to replace the lost tax revenue. Senate Bill 948, which was signed by Governor Edgar on July 14, restricts the use of the interest on Liability Bonds; they no longer can be used for general operation expenses as our agency had planned. Because of this legislation and some of the other bills/cases currently being considered, the Forest Preserve Board directed staff to begin the process of looking at ways to reduce our liability and generate more revenue. As of this time, we have eliminated the following full-time positions to reduce our annual costs: two Park Maintenance workers, one Golf Maintenance worker, and the Deputy Director position. We have started the process to brainstorm revenue ideas that would fit into our Forest Preserve mission of Education - Preservation - Recreation. The Board and Staff have thoroughly reviewed the 1993 Community Survey to review the ideas of our residents. We will be reviewing concept plans for the development of Heritage Farm Museum in the next six months, and are currently reviewing the phase II completion of PrairieView Golf Course and Clubhouse. These two projects would be completed with the current Bond Levy rate and include no new taxes.

As you can see, it has been very busy at the Forest Preserve this past summer and we invite all residents to take advantage of all the marvelous opportunities waiting for you and your family this fall at the Byron Forest Preserve.

# Registration Information

## Registration Information

### I. Mail-In

Byron Forest Preserve District  
P O Box 1075  
Byron IL 61010-1075

Registrations received before the first registration day will be processed with the following day's mail.

### II. Walk-In

Hours: Monday-Saturday - 8 AM-4:30 PM and Sunday - 1-4:30 PM.

Walk-In to the Jarrett Prairie Center, 7993 North River Road, Byron. The receptionist can answer questions and give receipts for cash payments. Registrations are time-stamped in the order they are received. Note: Walk-In registrations are processed after the drop off registrations.

### III. FAX

Faxed registrations are accepted 24 hours per day at (815) 234-8635. When faxing a registration, payment must be made with VISA.

## Nonresident Registration Information

Persons living outside the Forest Preserve District boundaries have the option of paying \$5 more than the resident rate for most programs and facilities.

**Nonresident program registration** begins one week after resident registration.

**Nonresident trip registration** begins the day after resident trip registration. Youth/Family trip registration coincides with program registration.

**Nonresidents** can pay a yearly fee of \$75, which will give them "resident" status. Please contact the Byron Forest Preserve District for detailed information, (815) 234-8535.

## Byron Forest Preserve District Registration

**District Residents:**

Begins August 14

**Nonresidents:**

Begins August 21

Registrations close one week before class/program starting date. Minimum registration and payment must be received by closing date or program/class will be cancelled.

## Program Registration Information

1. If the program you choose is filled, you will be given your second choice class.

2. If both choices are filled or you did not list a second choice, you will be put on a waiting list and payment will be refunded.

3. If an opening occurs, you will be contacted by phone and re-registration will be required.

4. If the program has been cancelled or changed, you will be contacted by phone and payment will be refunded.

5. All registrations must be completed on the proper registration form with the waiver on the back signed.

6. Early registration will be held until the second registration day.

## Payment Information

1. Visa and Mastercard are available for full payments only.

2. The Forest Preserve reserves the right to change a payment fee to reflect the correct fee.

3. If program fees differ between your first and second choice, pay the higher fee. If you are enrolled in the program with the lower fee, the Forest Preserve will refund the difference.

## Trip Registration

**Youth & Family Trips Registration** coincides with program registration dates. Trips that were offered during a previous session have "on-going" registration until filled. Nonresident Trip Registration is the following day.

**Refunds** can only be given for trips if you notify the Forest Preserve 48 hours in advance and your spot can be filled. All refunds are subject to a \$5/person service fee.

**Seating** - If you wish to sit with someone on the bus, place both registration forms in the same envelope, or have them attached to each other.

## Refunds

1. **Satisfaction Guaranteed** - Participants will receive a full refund if they are dissatisfied with the program after the first class meeting, but before the second.

2. Once a class has met a second time, no refunds will be issued. Exception: Illness or a relocation.

3. If a refund is approved after a second class meeting it is subject to a \$5 service charge.

4. A refund request form must be completed.

5. Refunds take approximately two weeks to process and are mailed in check form or credited to your credit card account.

5/30/95

# Upcoming Programs

## Special Events

### Second Saturday Concerts -

Saturdays 8 pm

August 12 - Lou/Peter Berryman  
(Outdoors, weather permitting)

Fee: \$8/adult \$2/child

Family maximum - \$20

### Jarrett Prairie Center

October 14 - Vance Gilbert

November 11 - TBA

December 9 - TBA

Fee: \$8 per person



### Harvest Party/Open House -

*This event will be fun for the entire family. Halloween activities and an open house are scheduled. There could also be a surprise guest for the kids!!*

*Everyone is welcome to visit the forest preserve and walk through such facilities as the Jarrett Prairie Center, the Weiskopf Observatory, the PrairieView Clubhouse, and the new Administrative Center. Refreshments will be available.*

All facilities - 7993 N River Rd

Sunday 3-7 pm October 29

Fee: Free

### Annual Christmas Craft Show -

*The show will feature exhibitors who will offer a variety of hand-crafted items, including Christmas ornaments and decorations, candles, wreaths, quilts, dolls, wood carvings, wooden furniture, hand-painted sweatshirts, baskets, and much more!*

Jarrett Prairie Center

Saturday 9am-4pm Dec. 2

Fee: Free

## Special Events

### Christmas Lights Tour -

*This event will coincide with the City of Byron's Christmas Walk. Carriages will transport passengers from the Downtown Byron area to the forest preserve to see the lights. Passengers will have the opportunity to do some shopping at the Jarrett Prairie Center Gift Shop and warm up with apple cider and cookies.*

Downtown Byron to

Jarrett Prairie Center

Thursday 6-8 pm Dec. 7

Fee: JPC Open House - Free

Carriage Rides - TBA



## Prairie Restoration

### Rock River Valley Wild Ones -

*Monthly meetings are held at the Jarrett Prairie Center.*

Third Saturdays Time: 9 am

Fee: Free

Instructor: Josh Skolnick

### Colossal Clone Clobber -

*Volunteers will embark upon this event. Smooth sumac, a shrub, is overrunning and shading out rare prairie plants over much of our prairie. Help us save our unique prairie by volunteering to help stamp out the sumac. Free prairie tours and refreshments will be available.*

Jarrett Prairie Center/Prairie

Saturday 9 am-Noon Aug 26

Fee: Free

Min. 1/Max. 25

Instructor: Josh Skolnick

## Prairie Restoration

### Volunteer/Stewardship Days -

*Come help us restore our native Illinois Prairie Heritage. Activities scheduled, depending on the weather, include fall harvesting of native prairie seeds for new plantings, brush removal, planting to help us establish a new seed production nursery, processing seeds using our "new" old fanning mill.*

Jarrett Prairie Center/Prairie

Saturdays Sept 9 & 23

9 am-Noon Oct 7, 14, & 21

Fee: Free

Min. 3/Max. 25

Instructor: Josh Skolnick

*Seeds - Seeds - Seeds - Fall is harvest time! Learn about what makes seeds special, how they form, how they move to a new place, how they germinate, and how prairie seeds are uniquely adapted to the requirements of the prairie environment. This hands-on class will include a short workshop on how to grow your own prairie plants from seeds. The 1 1/2 hour workshop on the life and times of seeds will be followed by a seed collecting expedition on the prairie.*

Jarrett Prairie Center/Prairie

Sunday October 1

1-2:30 pm - Lecture

2:30 pm - Seed Collecting

Fee: \$2/individual \$5/family  
(fees waived if you volunteer for the seed collecting expedition after the workshop)

Min. 5/Max. 30

Instructor: Josh Skolnick



*More Activities - Page 5*

## Prairie Restoration

**Fall Seed Scattering Party** - Help us restore more prairie through seeding old fields. Refreshments and potluck to follow the seeding. Bring the whole family!

**Jarrett Prairie Center/Prairie**  
**Saturday 9 am-2 pm Oct 28**  
**Fee: Free**  
**Min. 3/Max. 25**  
**Instructor: Josh Skolnick**

**Volunteer Learn Days** - Help the prairie to "see the light" by removing brush. Afterwards, tour the prairie to see the winter prairie. Potluck and refreshments to follow.

**Jarrett Prairie Center/Prairie**  
**Saturdays Nov. 11**  
**9 am-Noon Dec. 2**  
**Fee: Free Jan. 20, '96**  
**Min. 3/Max. 25 Feb. 10, '96**  
**Instructor: Josh Skolnick**



## Preschool Classes

**Nature Classes** - Students will learn about night animals, autumn colors, and ducks. Classes also include stories, crafts, and hands-on activities.

**Jarrett Prairie Center**  
**September 12, 19, 26**  
**Age 3-4 Tues. 9:30-10:30 am**  
**Age 4-5 Tues. 1:30-2:30 pm**

**September 13, 20, 27**  
**Age 3-4 Wed. 9:30-10:30 am**

**Fees: \$9 - resident**  
**\$12 - nonresident**  
**Min. 6/Max. 10**  
**Instructor: Nancy Blank**

## Preschool Classes

**Nature Classes** - Students will learn about seed travelers, spiders, and bats. Classes include stories, crafts, and hands-on activities.

**Jarrett Prairie Center**  
**October 10, 17, 24**  
**Age 3-4 Tues. 9:30-10:30 am**  
**Age 4-5 Tues. 1:30-2:30 pm**

**October 11, 18, 25**  
**Age 3-4 Wed. 9:30-10:30 am**

**Fees: \$9 - resident**  
**\$12 - nonresident**  
**Min. 6/Max. 10**  
**Instructor: Nancy Blank**

**Nature Classes** - Students will learn about how plants and animals prepare for winter, Native Americans/Indians, and wild turkeys. Classes will also include stories, crafts, and hands-on activities.

**Jarrett Prairie Center**  
**November 7, 14, 21**  
**Age 3-4 Tues. 9:30-10:30 am**  
**Age 4-5 Tues. 1:30-2:30 pm**

**November 8, 15, 22**  
**Age 3-4 Wed. 9:30-10:30 am**

**Fees: \$9 - resident**  
**\$12 - nonresident**  
**Min. 6/Max. 10**  
**Instructor: Nancy Blank**

**Nature Classes** - Students will learn about white-tailed deer and evergreen trees. Classes also include stories, crafts, and hands-on activities.

**Jarrett Prairie Center**  
**December 5 & 12**  
**Age 3-4 Tues. 9:30-10:30 am**  
**Age 4-5 Tues. 1:30-2:30 pm**

**December 6 & 13**  
**Age 3-4 Wed. 9:30-10:30 am**

**Fees: \$9 - resident**  
**\$12 - nonresident**  
**Min. 6/Max. 10**  
**Instructor: Nancy Blank**

## Youth Activities

**Junior Ranger Rick Nature Club**  
*Why is the sky blue and what does a buffalo feel like? Find out by becoming a Junior Ranger. Have fun exploring and discovering the wonders of nature and find out how you can help take care of our home, the earth.*

**Jarrett Prairie Center**  
**Second Thursdays 4-6 pm**  
**Field Trips - One Sat. per month**  
**September-May (except Dec.)**  
**First-Third Grade**  
**Fee: \$40 or \$6 per month**  
**plus field trip entrance fees**  
**Min. 5/Max. 20**

**Ranger Rick Nature Club** - Spend time outside in the wild and wonderful woods and meadows at the Byron Forest Preserve. Join with friends and become Rangers. Rangers enjoy learning about nature.

**Jarrett Prairie Center**  
**Second Wednesdays 4-6 pm**  
**Field Trips - One Sat. per month**  
**September-May (except Dec.)**  
**Fourth-Sixth Grade**  
**Fee: \$40 or \$6 per month**  
**plus field trip entrance fees**  
**Min. 5/Max. 20**

**Catch A Falling Leaf - Know Your Trees** - Leaf collections are a traditional school assignment, and a fun individual project. You will receive a booklet and help in finding and identifying trees and leaves for your collection.

**Jarrett Prairie Center**  
**Saturday 2-4 pm Sept. 9**  
**Fee: \$2.50 Age: 8-10**  
**Min. 5/Max. 15**



*More Activities - Page 6*

## Youth Activities

**School Holiday Nature Classes -**  
*Do something fun and different on your next day off from school. Bring a friend and spend some time enjoying the marvels and secrets of the natural world. Snacks, games, crafts, and other activities included. Bring a sack lunch.*

**Jarrett Prairie Center**  
**Mon, Sept 18 - Indians/Bison**  
**Mon, Oct 9 - Spooky Animals**  
**Fri, Nov 10 - Predators/Prey**  
**Grade: K-1st, 2nd-3rd, 4th-5th**  
**Fee: \$25/day 8 am - 3 pm**  
**Min. 5/Max. 12 (each age group)**

**Saturday Matinees - Three**  
*movies will be shown - a cartoon, a nature film, and a popular feature film. Admission includes adult supervision, popcorn, and a soft drink.*

**Jarrett Prairie Center Theater**  
**Saturdays 9 am - Noon**  
**October 21 - March 16**  
**Fee: \$3 Age: 4-9**

**Midweek Matinees**  
**Jarrett Prairie Center Theater**  
**Wednesdays 9 am - Noon**  
**Dec. 27, 1995 and Apr. 10, 1996**  
**Fee: \$3 Age: 4-9**

**Meadow Games - There is so**  
*much to discover in the tall grasses of a meadow - all kinds of flowers, insects, and holes. Games will focus on plant-animal and predator-prey relationships.*

**Jarrett Prairie Center**  
**Saturday 2-4 pm October 14**  
**Fee: \$2.50 Age: 6-10**  
**Min. 5/Max. 15**

**Harvest Time - Come hear a**  
*story, make a turkey craft for your Thanksgiving table, and hike through the woods in search of Harvest Time.*

**Jarrett Prairie Center**  
**Saturday 2-4 pm Nov 18**  
**Fee: \$2.50 Age: 5-10**  
**Min. 5/Max. 15**

## How To

**Natural Landscaping - Learn**  
*how to beautify your home with native Illinois plants. Be kind to the environment and provide food and shelter for wildlife, birds, and butterflies. Includes tips on design, plant selection, and maintenance of native natural landscapes.*

**Jarrett Prairie Center**  
**Thursdays 6:30-8:30 pm**  
**September 14, 21, 28**  
**Fee: \$15/\$10 (Wild Ones)**  
**or \$7 per session**  
**Min. 4/Max. 25**  
**Instructor: Josh Skolnick**

**Herbs - How To Grow & Use -**  
*Learn about a kitchen herb garden.*

**Jarrett Prairie Center**  
**Wednesday 7-8:30 pm Oct. 11**  
**Fee: \$1**  
**Min. 3/Max. 30**  
**Instructor: Elayne DeVan**

**Tree Care - Learn how to select**  
*and properly care for the health of your trees. Includes learning proper pruning techniques for ornamental and fruit trees, fertilizing, transplanting, and how to select strong, healthy trees for your landscape. Hands on demonstrations/learning is included. Bring pruning shears.*

**Jarrett Prairie Center**  
**Sunday 1-3 pm Nov. 4**  
**Fee: \$2**  
**Min. 4/Max. 25**  
**Instructor: Josh Skolnick**

## Music

**Harmonica Workshops - Bring**  
*your own harmonica (key of C) and learn the beginning techniques of harmonica playing. Harmonicas will also be available for purchase at the workshops.*

**Jarrett Prairie Center**  
**Saturdays 1-4 pm Sept. 16**  
**Fee: \$15/workshop Oct. 21**  
**Min. 4/Max. 30 Nov. 18**  
**Instructor: Sam Stephenson**

## Astronomy

**Introduction to Amateur**  
**Astronomy - Learn how the sky**  
*works, how to use your telescope, what you see, what to look for, and how to find it.*

**Weiskopf Observatory**  
**Wed. 7-9 pm Oct. 4, 11, 18**  
**Fee: \$15 Age: 12 & older**  
**Min. 8/Max. 15**  
**Instructor: Steve Toothman**

**Public Sky Viewing - Explore the**  
*constellations all year 'round.*

**Weiskopf Observatory**  
**Tuesdays Dusk**  
**Fee: Free**  
**Instructor: Josh Skolnick**

**Meteor Shower - Following the**  
*Berryman concert, enjoy nature's fireworks from the lawn or the Weiskopf Observatory will be open for sky viewing.*

**Weiskopf Observatory**  
**Saturday August 12**  
**Approx. 10 pm**  
**Fee: Free**  
**Instructor: Todd Tucker**

**Prairie View Astronomy Club -**  
*Monthly meetings are held at the Weiskopf Observatory.*  
**First Thursdays 7 pm**  
**Fee: Free**

## Tours & Walks

**Owl Night Hayride - Come ride**  
*through the woods and prairie under a star-filled sky. Listen for night sounds and watch for evening animals. Refreshments will be available after the hayride.*

**Jarrett Prairie Center**  
**Wednesday 7-9 pm Oct. 4**  
**Fee: \$2**  
**Min. 5/Max. 25**  
**Instructor: Josh Skolnick**

*More Activities - Page 7*



## Tours & Walks

**Bird Walks** - *These easy walks take bird watchers through the prairie and woods to identify native birds. Bird books are available at the Jarrett Prairie Center Gift Shop.*

**Jarrett Prairie Center/Prairie**  
**Saturdays** Nov. 25  
**8-10 am**  
**Fee: \$2**  
**Min. 3/Max. 12**  
**Instructor: Lisa Johnson**

## Family Programs

**Friday Night Wildlife Series** - *Bring the whole family to learn the definition of wildlife in Northern Illinois - "What is wildlife and what isn't?" Also learn about wildlife rehabilitation, habitat requirements, and food chains. Hands-on activities and take home crafts.*

**Jarrett Prairie Center**  
**Fridays 7-8:30 pm** Sept. 8, 22  
**Min. 10** Oct. 6  
**Fee: \$2/adult \$1/child**  
**\$6/family maximum**  
**Instructor: Sally Baumgardner**

**Fall Flyers - Migrants** - *Learn about fall migrants of the Rock River Valley. Class includes a slide show followed by a bird walk. Refreshments will be available.*

**Jarrett Prairie Center**  
**Saturday 7-9 am** Sept. 23  
**Fee: \$2/adult \$1/child**  
**\$6/family maximum**  
**Min. 4/Max. 25**  
**Instructor: Lisa Burrows**

**Fall Flyers - Bird Banding** - *Learn about the importance of banding migratory birds. Hands-on demonstrations with wild birds.*

**Jarrett Prairie Center**  
**Saturday 8-11 am** Sept. 30  
**Fee: \$2/adult \$1/child**  
**\$6/family maximum**  
**Min. 4/Max. 25**  
**Instructor: Bob Severson**

## Family Programs

**Fall Flyers - Bird Feeders** - *Learn what kinds of birds will be attracted to basic feeders in your yard. A variety of feeders will be on display.*

**Jarrett Prairie Center**  
**Saturday 1-2:30 pm** Oct. 7  
**Fee: \$2/adult \$1/child**  
**\$6/family maximum**  
**Min. 4/Max. 25**  
**Instructor: Judy Kautz**

**Fall Flyers - Birds of the Prairie** - *An easy walk through the prairie and woods to spot and identify birds. Fall is the season for migratory birds such as warblers, hawks, and waterbirds.*

**Jarrett Prairie Center/Prairie**  
**Saturday 8-10 am** Oct. 14  
**Fee: \$2/adult \$1/child**  
**\$6/family maximum**  
**Min. 3/Max. 12**  
**Instructor: Lisa Johnson**

**Introduction to Beekeeping** - *Learn how to get started in the fascinating hobby of beekeeping. This beginning level workshop will focus on setting up a hive, beekeeping equipment, basics of bee care, and an introduction to the process of gathering comb and extracting honey.*

**Jarrett Prairie Center**  
**Sunday Noon-4:30 pm** Oct. 22  
**Fee: \$2/adult \$1/child**  
**\$6/family maximum**  
**Min. 3**  
**Instructor: John Zaleskas**

## Other Activities

**Senior Exercise Class** - *This 8-week class includes easy stretching aerobics for senior citizens.*

**Jarrett Prairie Center**  
**Tuesdays and Thursdays**  
**August 29-October 19**  
**10:15-11 am**  
**Fee: \$8 (pay at Park District**  
**Office at Byron High School)**  
**Min. 3/Max. 20**  
**Instructor: Katy Smith**

## Other Activities

**Volunteers** - *Volunteers of all ages are welcome to join this ever-growing group to help process seeds, build birdhouses, assist with golf course maintenance, and many other enjoyable tasks.*

**Jarrett Prairie Center**  
**Tuesdays 8:30-11:30 am**

**Hunter Safety Course** - *This 8-hour course includes instruction in wildlife management, firearms safety, hunter ethics, game identification, first aid, survival techniques, regulations, and hands-on shooting range experience. This course is required for hunters under age 16 before they can receive their first hunting license.*

**Rochelle Sportsmen's Club**  
**Wednesday 7-9 pm** Sept. 6  
**Thursday 7-9 pm** Sept. 7  
**Saturday 9am-Noon** Sept. 9  
**Fee: Free**  
**Min. 5/Max. 30**  
**Instructor: Garland Grace**

**Creative Memories Classes** - *Learn about organizing and preserving photos. Learn about problems with photo storage. Get some creative tips on cropping, labeling, page layout, etc.*

**Jarrett Prairie Center**  
**Sat. 10:30am-2:30pm** Sept. 16  
**Sat. 10:30am-2:30pm** Nov. 18  
**Fee: \$10 per class**  
**Min. 5/Max. 20**  
**Instructor: Linda Nichols**  
**(to register, call 1-815-648-2524)**

**Marquetry** - *This 5-week course will show you how to create a picture using very thin pieces of wood.*

**Jarrett Prairie Center**  
**Wednesdays 7-9 pm**  
**November 1 - November 29**  
**Fee: \$25**  
**Min. 5/Max. 14**  
**Instructor: Howard Fox**

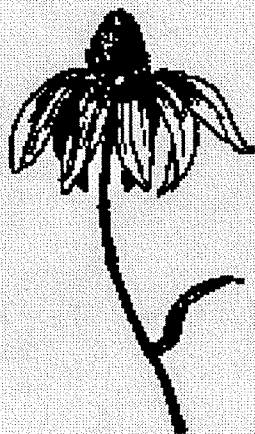
**CALL (815) 234-8535**  
**TO REGISTER**

# **LOU AND PETER BERRYMAN - AUGUST 12**

## **Jarrett Prairie Center - 8 PM**



### ***INSIDE...***



#### ***DISTRICT NEWS***

- ***NEW ADMINISTRATIVE CENTER***
- ***EXECUTIVE DIRECTOR'S MESSAGE***
- ***NEW FALL PROGRAMS***

***PAGE 1***

***PAGE 2***

***PAGES 3-7***

#### ***PRAIRIEVIEW GOLFER***

- ***GOLD MEDAL TOURNAMENT***
- ***AUDUBON SANCTUARY PROGRAM PROGRESS***
- ***NEW PACE OF PLAY CLOCKS***

***PAGE 1***

***PAGE 2***

***PAGE 3***

**BYRON FOREST PRESERVE DISTRICT  
7993 N RIVER RD  
P O BOX 1075  
BYRON IL 61010-1075**

**BULK RATE  
U S POSTAGE PAID  
BYRON IL 61010  
PERMIT NO 50**

**POSTAL PATRON  
BYRON IL 61010**



# BYRON FOREST PRESERVE DISTRICT NEWS

George Ashby, Board President  
Dr. Robert Johnson, Vice President  
Gene Smith, Secretary  
Robert Severson, Treasurer  
Don McAghon, Commissioner

Edward C. Clift, Executive Director  
Vinde Wells, Managing Editor  
Michelle Lipps, Editor

1995

PRESERVATION - EDUCATION - RECREATION

WINTER

## Byron Forest Preserve's Fourth Annual HOLIDAY CRAFT SHOW

Saturday, December 2

9 am - 4 pm

Jarrett Prairie Center

7993 North River Road, Byron

Wood Crafts • Sweatshirts • Candles • Quilts • Dolls  
Holiday Ornaments & Decorations • Native American  
Arts & Crafts • Concessions • Much More!



# *A Message from the Executive Director*

This has been a very exciting fall, with a lot of activity at your Forest Preserve. The following pages outline some of our accomplishments this fall and upcoming activities this winter.

Some of our exciting programs highlighted in this newsletter are Earth Keepers, Ranger Rick, Skyviewing, Second Saturday Concerts, Volunteer Activities, and many Nature programs.

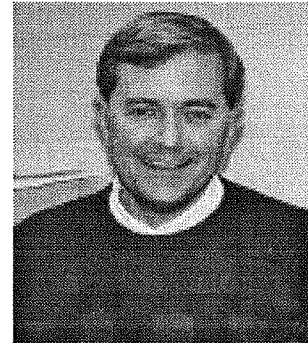
This fall our Golf Maintenance, Park Maintenance, and Nature Divisions have been busy planting over 300 trees, cutting woody material out of the prairie, setting up the winter sports areas, and burning some of the prairie, all of which will provide a more usable and beautiful prairie.

We will be offering an enclosed shelter for sledders, skiers, and ice skaters this winter at the Forest Preserve as a new winter sports facility, more detailed information is enclosed.

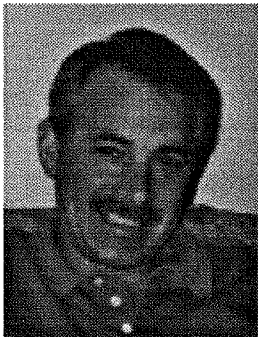
**GOLFERS** - remember to purchase your 1996 Season Golf Pass by December 21st and pay 1995 rates! The staff and Board has held green fees and pass rates for residents the same for three years, to provide the best golfing value possible. Complete details are enclosed *Edward C. Clift, Executive Director* about 1996 golf rates.

As you will see, we have exciting opportunities for all ages (pre-school to seniors) for YOU and YOUR family. Please remember that we count on volunteerism to be able to accomplish all that is offered to the community. Be involved - **VOLUNTEER TODAY!**

I want to thank all of our staff for such a fine effort this past Fall in preparing these programs and maintaining the Forest Preserve facilities and grounds. As you can see, it has been very busy at the Forest Preserve and we invite all residents to take advantage of all the marvelous opportunities waiting for you and your family this winter at the Byron Forest Preserve.



## **Don McAghon Appointed to BFPD Board**



*Commissioner Don McAghon*

The Byron Forest Preserve District Board of Commissioners appointed Don McAghon to the board in October. The appointment fills the unexpired term of former commissioner Fred Brune.

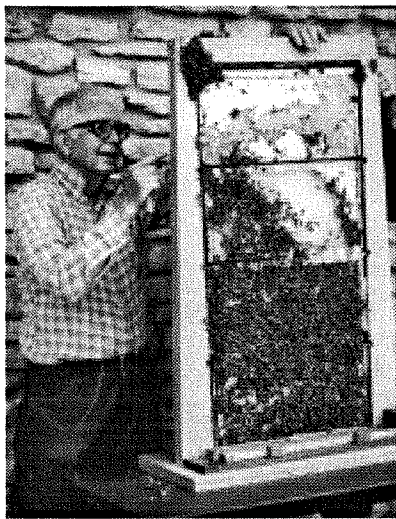
McAghon said he is interested in the native plants and natural history of the prairie in this area. He said that during his time on the board he plans to work toward "continuing the efforts already begun in terms of making the forest preserve a place everyone in Byron can enjoy."

McAghon and his wife, Claire, have lived in Byron for five years. The couple have three children, Silas, Kate and Brian.

He is employed in sales for Zeneca Ag Products. His hobbies include golf and gardening.

***THE BOARD & STAFF OF THE  
BYRON FOREST PRESERVE WISH  
YOU A JOYOUS HOLIDAY SEASON!***

## Hive Named for "Bee Guy"



John Zaleskas aka "The Bee Guy" removes a honey chamber from the observation hive at the Jarrett Prairie Center.

Longtime Byron Forest Preserve Volunteer John Zaleskas, affectionately known as the "Bee Guy", died Nov. 19 after a lengthy battle with cancer.

Zaleskas was a familiar figure around the forest preserve because of his extensive work with the honey bees.

In appreciation for Zaleskas' hours of expertise and educational guidance, the Board of Commissioners decided Nov. 4 to dedicate the observation hive in the Jarrett Prairie Center in his honor.

An engraved plaque will be located near the hive to recognize this volunteer's outstanding service to the Byron Forest Preserve.

Zaleskas' enthusiasm for the bees was well-known at the preserve. He will be missed by staff members and visitors.

## Great Honey Harvest

It's the end of the bee season, and the bees are insulated for the long hard winter ahead.

We harvested 210 pounds of honey from four hives, which resulted in 155 and three-fourths pounds of honey bears, and 83 cut comb boxes.

We sell the honey in the Jarrett Prairie Center Gift Shop, and it's going fast! In fact, only a case of the honey bears remain so you better hurry to get yours!

Have you ever wondered how the bees live through the winter if we harvest the honey from their hives?

Not all the honey is taken from the hive. We leave the bees two to three chambers (hive bodies) to feed the hive throughout the cold season.



Yellow coneflowers in bloom on the prairie in midsummer

## PRAIRIEVIEW PRAIRIE NOTES

This summer, the Nature Department staff and Golf Maintenance workers have been hard at work establishing prairie areas on the PrairieView Golf Course.

Approximately 3,900 plants were plugged in to five different areas. Fifty-two different kinds of forbs, or blooming plants, and nine different kinds of grasses and sedges were used, ranging from dry prairie plants to water-loving wetland plants.

Many of these plants started to bloom soon after they were planted. In our little wetland area near sixteen tee, golfers were treated to the colors of great blue lobelia, joe pye weed, ironweed, monkey flower and great St. John's wort.

The planting at the main sign at the corner near the Rock River bridge did especially well, with the bright orange of butterfly weed, the violet of the purple coneflowers, the yellow of the black-eyed susans and the white of the wild quinine and fleabane. The two clubhouse island plantings are also looking good and should give a continuous show of color next year.

Over the course of the season, more than 60 species of birds were spotted on or near the golf course. Many are known to nest on the course, such as bluebirds and tree swallows, which use the nest boxes. Horned larks and killdeer prefer to nest directly on the ground.

In spring and fall, the two ponds on the golf course attract migrating waterfowl. Least sandpipers, lesser yellowlegs, ring-necked ducks and northern shovelers were all spotted there, as well as a little green heron, which was lurking about the wetland area.

Six different kinds of sparrows were spotted, as well as five different kinds of woodpeckers, and seven different kinds of warblers.

This winter, staff will be busy creating interpretive displays and signs for the course, as well as working on plans for more prairie plantings.

For the next golfing season, we hope to provide golfers not only with an interesting and challenging course, but also with an opportunity to view and learn about wild flowers and animals.

## NOTES FROM THE NATURALIST

### Woody Growth

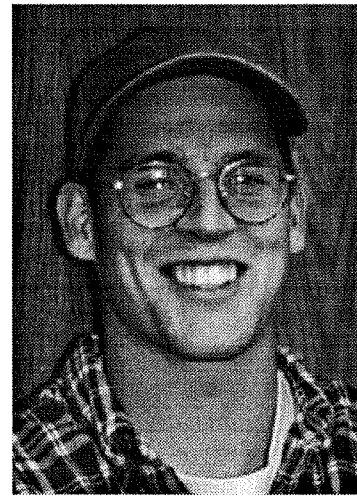
The ever changing prairie is going through yet another heavy face lift. Do to the advanced growth of many woody scrubs and trees (multiflora rosa, sumac, honeysuckle, and cherry clusters) encroaching into the prairie, large areas are being cut and mowed.

It is essential to mow these areas before the trees grow too large and have to be cut individually with a tractor-operated tree saw or chain saw.

Mowing these woody areas allows the sun light to penetrate the soil, and gives the prairie plants a better chance for growth. If these areas were allowed to grow, it would not be long until the prairie would become overrun with unwanted vegetation.

The practice of mowing the prairie is harsh, but often necessary in early stages of prairie restoration. The woody areas will decrease over the next 3-5 years with proper management such as spot mowing, burning, hand-spraying herbicide, and seeding. Eventually the prairie plants will be well-established and will dominate the woody growth.

This project has been a cooperative effort between the Naturalist Division and the Park Maintenance Department, which is headed up by Shawn Morrison.



Byron Forest Preserve District  
Naturalist Todd Tucker.



Bergamot

aster, wild quinine, aster ptarmicoides, shooting star, prairie smoke, bergamot, compass plant, showy goldenrod, false boneset, sky blue aster, New Jersey tea, black-eyed susan, yellow coneflower, pale purple coneflower, bottle gentian, gayfeather (blazingstar), gray goldenrod, Culver's root, meadow rue, aromatic aster, and western sunflower, and grasses such as little bluestem and sideoats grama.

### Burning

The prairie is off to a slow start due to Mother Nature's early snow fall. This will set back the chances of doing large fall burns.

The Nature Department staff, assisted by Park Maintenance, intended to do larger than usual burns this fall to burn over the areas where woody vegetation was removed and to control the new tree saplings that then invade the prairie. Burns can only be conducted a few days of the year, because of such criteria as low wind speed, humidity between 30-60%, and temperatures from 40-70 degrees.

With any luck the early snow we received will melt, and the ground will dry enough to allow a couple of large scale burns on our prairie and in the woodlands yet this year.

### Seeding

We have expanded our prairie! A newly-seeded prairie area on the preserve is located directly south of the golf maintenance buildings.

This is the area that has been tilled up most of the summer, and formerly was a tree nursery.

We tilled the land four times to be sure we had exhausted all unwanted species. After the weeds were destroyed, a sandy soil mixture was mixed with a variety of prairie seeds.

This mixture was then spread across the tilled land, either by hand broadcasting or with a fertilizer spreader.

The winter conditions will imbed the seed into the soil which will allow better germination in the spring.

The plants we can expect to see include forbs such as marblesseed, coreopsis palmata, rosinweed, rough blazingstar, heart-leaved golden alexander, penstemon pallida, New England

### Holiday Hours

The Jarrett Prairie Center will be open on an abbreviated schedule during the holiday season.

The center will be closed on Christmas Day and New Year's Day.

During the week of Tuesday, Dec. 26 through Saturday, Dec. 31, the center will be open from 8:30 a.m.-4:30 p.m. daily.

Normal hours will resume on Tuesday, Jan. 2.



# Registration Information

## Registration Information

### I. Mail-In

Byron Forest Preserve District  
P O Box 1075  
Byron IL 61010-1075

Registrations received before the first registration day will be processed with the following day's mail.

### II. Walk-In

Hours: Monday-Saturday - 8 AM-4:30 PM and Sunday - 1-4:30 PM.

Walk-In to the Jarrett Prairie Center, 7993 North River Road, Byron. The receptionist can answer questions and give receipts for cash payments. Registrations are time-stamped in the order they are received. Note: Walk-In registrations are processed after the drop off registrations.

### III. FAX

Faxed registrations are accepted 24 hours per day at (815) 234-8635. When faxing a registration, payment must be made with VISA.

## Nonresident Registration Information

Persons living outside the Forest Preserve District boundaries have the option of paying \$5 more than the resident rate for most programs and facilities.

**Nonresident program registration** begins one week after resident registration.

**Nonresident trip registration** begins the day after resident trip registration. Youth/Family trip registration coincides with program registration.

**Nonresidents** can pay a yearly fee of \$75, which will give them "resident" status. Please contact the Byron Forest Preserve District for detailed information, (815) 234-8535.

## Byron Forest Preserve District Registration

### District Residents:

Begins December 4

### Nonresidents:

Begins December 11

Registrations close one week before class/program starting date. Minimum registration and payment must be received by closing date or program/class will be cancelled.

## Program Registration Information

1. If the program you choose is filled, you will be given your second choice class.

2. If both choices are filled or you did not list a second choice, you will be put on a waiting list and payment will be refunded.

3. If an opening occurs, you will be contacted by phone and re-registration will be required.

4. If the program has been cancelled or changed, you will be contacted by phone and payment will be refunded.

5. All registrations must be completed on the proper registration form with the waiver on the back signed.

6. Early registration will be held until the second registration day.

## Payment Information

1. Visa and Mastercard are available for full payments only.

2. The Forest Preserve reserves the right to change a payment fee to reflect the correct fee.

3. If program fees differ between your first and second choice, pay the higher fee. If you are enrolled in the program with the lower fee, the Forest Preserve will refund the difference.

## Trip Registration

**Youth & Family Trips Registration** coincides with program registration dates. Trips that were offered during a previous session have "on-going" registration until filled. Nonresident Trip Registration is the following day.

**Refunds** can only be given for trips if you notify the Forest Preserve 48 hours in advance and your spot can be filled. All refunds are subject to a \$5/person service fee.

**Seating** - If you wish to sit with someone on the bus, place both registration forms in the same envelope, or have them attached to each other.

## Refunds

1. **Satisfaction Guaranteed** - Participants will receive a full refund if they are dissatisfied with the program after the first class meeting, but before the second.

2. Once a class has met a second time, no refunds will be issued. Exception: Illness or a relocation.

3. If a refund is approved after a second class meeting it is subject to a \$5 service charge.

4. A refund request form must be completed.

5. Refunds take approximately two weeks to process and are mailed in check form or credited to your credit card account.

5/30/95

# Upcoming Programs

## Special Events

**Second Saturday Concerts -**  
Saturdays 8 pm  
Jarrett Prairie Center

**December 9 - Christopher Shaw  
& Bridgett Ball - Holiday Show**  
"Mountain Snow & Mistletoe"

**January 13 - Carrie Newcomer**  
**February 10 - TBA**  
Fee: \$8 per person



### Annual Holiday Craft Show -

The show will feature exhibitors who will offer a variety of hand-crafted items, including holiday ornaments and decorations, Native American arts and crafts, candles, wreaths, quilts, dolls, wood carvings, wooden furniture, hand-painted sweatshirts, baskets, and much more!

**Jarrett Prairie Center**  
**Saturday 9am-4pm Dec. 2**  
Fee: Free

**Holiday Lights Tour -** This event will coincide with Byron's Christmas Walk. Horse-drawn carriages will transport passengers from the Administrative Center parking lot at the forest preserve through the preserve to see the lights. Passengers will have the opportunity to do some shopping at the Jarrett Prairie Center Gift Shop and warm up with apple cider and cookies.

**Administrative Center parking lot to the Jarrett Prairie Center**  
**Thursday 6-8 pm Dec. 7**  
Fee: JPC Open House - Free  
Carriage Rides - \$20/person  
Min. 12/Max. 20  
Rides provided by:

## Prairie Restoration

**Classy Carriage Service**  
**Rock River Valley Wild Ones -**  
Monthly meetings are held at the Jarrett Prairie Center.

**Third Saturdays Time: 9 am**  
Fee: Free  
Instructor: Lisa Johnson

## Preschool Classes

**Nature Classes -** Students will learn about white-tailed deer and evergreen trees. Classes also include stories, crafts, and hands-on activities. See article, page 6.

**Jarrett Prairie Center**  
**December 5 & 12**  
Age 3-4 Tues. 9:30-10:30 am  
Age 4-5 Tues. 1:30-2:30 pm

**December 6 & 13**  
Age 3-4 Wed. 9:30-10:30 am

Fees: \$6 - resident  
\$8 - nonresident  
Min. 6/Max. 10  
Instructor: Barb Wingert

## Youth Activities

**Junior Ranger Rick Nature Club**  
Why is the sky blue and what does a buffalo feel like? Find out by becoming a Junior Ranger. Have fun exploring and discovering the wonders of nature and find out how you can help take care of our home, the earth.

**Jarrett Prairie Center**  
**Second Thursdays 4-6 pm**  
Field Trips - One Sat. per month  
September-May (except Dec.)  
First-Third Grade  
Fee: \$6 per month plus field trip entrance fees  
Min. 5/Max. 20

## Youth Activities

**Instructor: Marie Bernardy**  
**Ranger Rick Nature Club -**  
Spend time outside in the wild and wonderful woods and meadows at the Byron Forest Preserve. Join with friends and become Rangers. Rangers enjoy learning about nature.

**Jarrett Prairie Center**  
**Second Wednesdays 4-6 pm**  
Field Trips - One Sat. per month  
September-May (except Dec.)  
Fourth-Sixth Grade  
Fee: \$6 per month plus field trip entrance fees  
Min. 5/Max. 20  
Instructor: Susan Kleiman

**Saturday Matinees -** Youngsters will watch a nature movie, have a snack and create a take-home nature craft. Admission includes adult supervision, popcorn, and a soft drink. See article, page 8.

**Jarrett Prairie Center Theater**  
**1st & 3rd Saturdays 9 am - Noon**  
**January 1- March 16**  
Fee: \$3 Age: 4-9

**December Matinees**  
**Jarrett Prairie Center Theater**  
**Sat., Dec. 9 & 30 9 am - Noon**  
**Wed., Dec. 27 9 am - Noon**  
Fee: \$3 Age: 4-9



*More Activities - Page 7*

## Astronomy

**Public Sky Viewing** - Explore the constellations all year 'round.

**Weiskopf Observatory**  
Tuesdays Dusk  
Fee: Free



**Prairie View Astronomy Club** - Monthly meetings are held at the Weiskopf Observatory.

First Thursdays 7 pm  
Fee: Free

## Winter Activities

**Snowmobile Safety** - Learn the basics of snowmobile safety. Bring a sack lunch. Adults without a driver's license must be certified.

**Jarrett Prairie Center**  
Saturdays 8 am-4:30 pm  
Dec. 9, '95 & Jan. 20, '96  
Fee: Free Min. 5/Max. 25  
Ages: 12-16 - Adults welcome  
Instructor: Marvin Binkley

**Winter Safety/Outdoor Survival** - Ages 10 and up will learn about safety measures for extreme cold weather emergencies and situations. This course also includes instruction on clothing, shelter, food, water, and navigation in these situations. Weather permitting. Dress appropriately.

**Jarrett Prairie Center**  
Saturdays 9 am - Noon  
Dec. 16, '95 - Register by 12-9  
Jan. 13, '96 - Register by 1-6  
Feb. 10, '96 - Register by 2-3  
Fee: \$2/session - choose one  
Min. 10/Max. 40  
Instructor: Todd Tucker

## Winter Activities

**Cross-Country Skiing for Beginners** - Ages 8 and up will learn how to safely cross-country ski. After watching a video, you'll get hands-on experience.

**Jarrett Prairie Center**  
Saturdays 1-4 pm  
Dec. 16, '95 - Register by 12-9  
Jan. 13, '96 - Register by 1-6  
Feb. 10, '96 - Register by 2-3  
Fee: \$3/session plus ski rental  
(Choose one session)  
Min. 5/Max. 20  
Instructor: Todd Tucker

**Night Prairie Ski** - Ages 14 and up will enjoy the beauty of the winter prairie during a night ski. Refreshments will be served. Weather permitting. Dress appropriately.

**Jarrett Prairie Center**  
Friday 7-9 pm Jan. 5, '96  
Fee: \$2 plus ski rental  
Min. 5/Max. 20  
Instructor: Todd Tucker



**Second Annual Owl Moonlight Walk** - Enjoy a moonlit walk through the prairie to see the forest preserve's owl population.

**Jarrett Prairie Center**  
Friday Feb. 9, '96 7-9 pm  
Fee: \$2  
Min. 5/Max. 25  
Instructor: Lisa Johnson

## Winter Activities

**Winter Walk - Tracking for Animal Life** - Come for a winter walk to track the animal life throughout the prairie preserve. Learn how animals survive the winter. Hot chocolate before and/or after walk.

**Jarrett Prairie Center**  
Sat. Feb. 17, '96 10am-Noon  
Fee: \$3  
Min. 10/Max. 30  
Instructor: Sally Baumgardner

## Arts & Crafts

**Animal Portraits** - This is a 5-week course. You will draw from real life studies of animal displays at the Jarrett Prairie Center. Individualized instruction. Adult level class.

**Jarrett Prairie Center**  
Thursdays 6:30-8:30 pm  
January 11 - February 8, '96  
Fee: \$25 plus supplies  
Min. 10/Max. 15  
Instructor: Sherry Dorr  
Register by January 4.

**Flora & Fauna Around the World** - This is a 5-week course. Explore Mexican bark paintings, Molos of Panama, Korhogo cloths of West Africa, and Anasazi Rock Art. Individualized instruction. Age 5 & up.

**Jarrett Prairie Center**  
Thursdays 4-6 pm  
January 11 - February 8, '96  
Fee: \$25 plus supplies  
Min. 10/Max. 15  
Instructor: Sherry Dorr  
Register by January 4.



*More Activities - Page 8*

## Arts & Crafts

**Drawing from Nature** - This is a 5-week course. Explore multi-media with charcoal, chalk pastels, oil pastels, and pencil. Individualized instruction.

**Jarrett Prairie Center**

**Tuesdays**

**4-6 pm - Ages 5 and up**

**6:30-8:30 pm - Adult level**

**January 9 - February 6, '96**

**Fee: \$25 plus supplies**

**Min. 10/Max. 15**

**Instructor: Sherry Dorr**

**Register by January 2.**

**Dreamcatcher Workshop** - Learn to make your own dreamcatcher. Materials will be provided.

**Jarrett Prairie Center**

**Saturday Jan. 27, '96**

**10 am-Noon**

**Fee: \$5**

**Min. 6/Max. 15**

**Instructor: Judy Hager**

## Other Activities

**Volunteers** - Volunteers of all ages are welcome to join this ever-growing group to help process seeds, build birdhouses, assist with golf course maintenance, and many other enjoyable tasks.

**Jarrett Prairie Center**

**Tuesdays 8:30-11:30 am**

**Creative Memories Classes-**

Learn about organizing and preserving photos. Learn about problems with photo storage. Get some creative tips on cropping, labeling, page layout, etc.

**Jarrett Prairie Center**

**Sat. 9:30am-5pm Feb. 3**

**Fee: \$15/continuing students**

**\$20/beginners**

**After Jan. 20, \$20/continuing**

**and \$25/beginners**

**Min. 5/Max. 20**

**Instructor: Linda Nichols**

## Other Activities

**Boating Safety** - This is a two-part course taught by the Illinois Department of Conservation. Illinois law mandates that persons age 12-17 must successfully complete a boating safety education course before operating a motor boat without an adult present. Participants who successfully complete the course will receive a certificate.

**Jarrett Prairie Center**

**Thursday Feb. 21 6-9 pm**

**Saturday Feb. 24 6-9 pm**

**Fee: Free**

**Min. 5/Max. 25**

**Instructor: Jerry Ziebert**



## Saturday Matinee Format Changes

The schedule and format of our Saturday Morning Matinees will change in December. Matinees will be held Saturday, Dec. 9; Wednesday, Dec. 27 and Saturday, Dec. 30 at the Jarrett Prairie Center Theatre.

The matinees are held from 9 a.m.-noon and are geared for children ages 4-9. The new format will include a nature movie which lasts about an hour, a break for popcorn and a soft drink, and then wrap up with a take-home arts and crafts project which coincides with the day's nature film. When weather and time allow, an outdoor activity will also be included.

Beginning January 1, the matinees will be held the first and third Saturdays of every month through March.

The cost of the morning matinee is \$3 per child, which includes supervision, one popcorn and one soft drink, and craft project materials. Additional popcorn or drinks are 50 cents each.

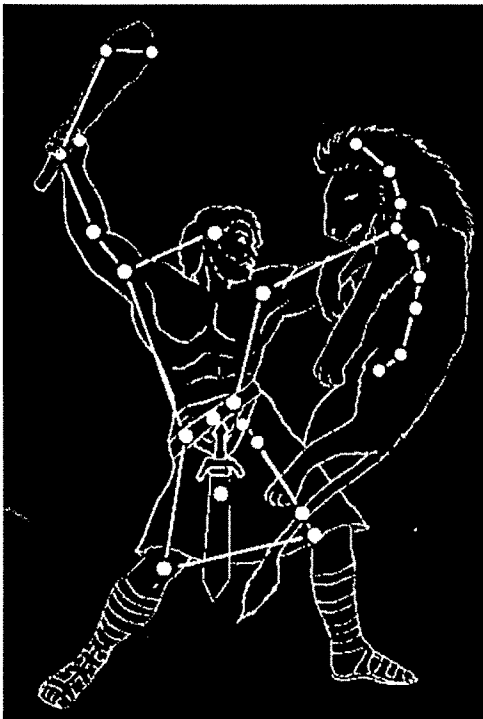
See the green insert for December movie titles. For more information call 815/234-8535.

### Please Note...

**Nature Preschool Classes will not be held in January. The sessions will resume in February - watch for details.**



# Star Time



October was a busy month for the J. Weiskopf Observatory. About 180 people toured the facility during the usual Tuesday night viewing sessions and two special events.

On one Friday night, 19 folks came from Focus House to view the stars.

On October 29 for our Harvest Fest Open House, 83 people turned out. Even though the weather was not good for skyviewing, our guests still had a chance to see the telescopes, view the stars via the computer, and watch some stellar videos.

Folks came from Byron, Rockford and most of the other small towns in the area, as well as Rock Falls, Dixon, Elk Grove and as far away as Mendota.

There was even a family from Kansas who were visiting relatives in the area.

In the early part of October, we were treated to some good views of the moon. Jupiter and its four largest moons were visible all through the month as well as Saturn and its rings.

During the later part of the month, the moon was not up and we were able to look at some of the dimmer objects. Many people got to see the Ring Nebula, the Andromeda Galaxy and the Globular Cluster, M13.

Looking ahead as we go into the winter months, the constellation Orion (left) becomes visible, with its Orion Nebula, as well as the star clusters, Pleiades and Hyades. Other constellations that will be visible are Taurus the Bull and Gemini the Twins.

The observatory will be open each Tuesday throughout the winter starting about dusk, weather permitting. Hope to see you there.

---

## Attention, Hunters...

Hunting and retrieving wounded game is prohibited, and hunting regulations will be strictly enforced this year at the Byron Forest Preserve.

Todd Tucker, Acting Naturalist at the Byron Forest Preserve, said safety is his primary concern during the current and upcoming hunting seasons.

"While the forest preserve staff does not wish to discourage or impede the legal harvesting of game animals, we are concerned that an accident could happen," Tucker said. "We have two major trails which are a direct route around the preserve boundary lines. People walk these trails early in the morning and late in the evening. I am concerned that someone could get accidentally injured."

Tucker said no hunting will be tolerated within the boundaries of the Byron Forest Preserve, and no one will be given permission to retrieve wounded game from the forest preserve, even though the animal may have been shot off the property.

The Illinois Hunting Rules and Regulations Handbook states, "Illinois does not grant the right to trespass for the purpose of retrieving wounded or crippled wildlife. You must secure permission from the landowner or tenant before entering any property."

Tucker said the regulation will be enforced at the forest preserve this year and in the future. "I understand that the Byron Forest Preserve has had some problems in the past with hunting on our grounds, and we don't want that to happen again," he said.

"An Illinois Department of Conservation police officer was here recently to survey the problem area. He said the forest preserve, especially the areas where trails go near the property lines, will be one of his most heavily patrolled areas," Tucker said. "I would encourage any hunters who might be tempted by the game here at the forest preserve to use their better judgment within or near our boundaries."

## Volunteer Project Update

The Byron Forest Preserve Volunteers have just finished a project of making props or educational materials for Earth Keepers, a program which teaches fourth and fifth graders how to live to preserve our Earth. We sure had a good time with this.

During the month of October, the Volunteers tackled a variety of tasks, including processing prairie seeds from pods, working in the Jarrett Prairie Center Gift Shop, collating the Family Times and helping make the Harvest Fest Open House a HUGE success.

We sure do have a lot of fun doing all these things. You always know where the volunteers are on Tuesday mornings.

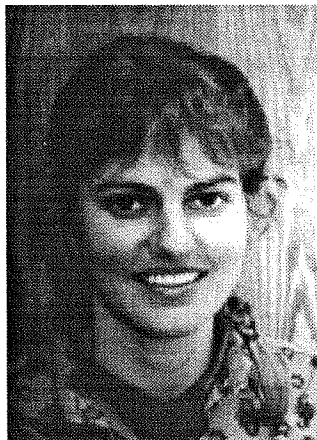
We were sad to say good-bye to Fred and Nancy Courtright, who recently moved to Tennessee. Good-bye and GOOD LUCK, Fred and Nancy! You will be missed. The Courtrights served the Byron Forest Preserve faithfully, donating 660 hours of their time.

If you are interested in volunteering, call Barb (pictured right) at 815/234-8535.



Volunteer Coordinator  
Barbara Wingert

## Earthkeepers Program is a HUGE Success!!



Education Asst. Susan Kleiman

Mary Morgan Elementary School in Byron is the first school to participate in this innovative earth education program at the Byron Forest Preserve.

The fourth grade students have enjoyed themselves tremendously as they learned ecological processes such as how air, water and soil are used over and over again in cycles.

The students came for three days to the Byron Forest Preserve to learn from Susan Kleiman (left) and a character called E.M. This character is a special naturalist who wants to help people learn about our earth and take good care of it. While learning, the students are also discovering who E.M. really is.

Ask any fourth grade student at Mary Morgan about being an Earthkeeper and they will likely share with you one of many exciting activities that they experienced such as sitting quietly each day at their "magic spot," where they can write in their diary about the natural world around them and have time to reflect on the day's activities.

Earthkeepers was designed especially for fourth and fifth grades by The Institute for Earth Education, a professional, non-profit organization. This high quality program has world-wide popularity, and has been implemented in other countries such as Canada, Britain, France, and Australia.

The Byron Forest Preserve offers Earthkeepers to any school (public, private, home school associations) for the fourth and/or fifth grade level. Please call 234-8535 to schedule a session.

## GOING WILD!

The Byron Forest Preserve sponsors the Wild Ones Natural Landscaping Club. This is a group of people who are interested in landscaping with native plants.

Programs and field trips are geared toward learning about native plants, what they look like and how to grow them, as well as how they attract wildlife, such as birds and butterflies.

Members meet on the third Tuesday of each month at 7 pm at the Jarrett Prairie Center. If you are interested, please call (815) 234-8535.

Wild Ones Membership: \$15 Per Year. Make checks payable to: Wild Ones. Mail to: Wild Ones - Natural Landscapers, Ltd., P O Box 23576, Milwaukee WI 53223-0576

Name \_\_\_\_\_

Address \_\_\_\_\_

City, State \_\_\_\_\_

Zip \_\_\_\_\_ - \_\_\_\_\_ (9 numbers, please)

Phone \_\_\_\_\_ ext. \_\_\_\_\_

Meeting Location Preference:

☐ Milwaukee  
☐ Milwaukee Wehr  
☐ Green Bay

☐ Northern Illinois  
☐ Rock River Valley, Illinois  
☐ Columbus, Ohio







## Trees, Trees, and More Trees

Park and Golf Maintenance Divisions joined forces to plant approximately 330 trees at PrairieView Golf Course this year. The trees included red, sugar and silver maples, green ash, walnuts, spruce, pines, and gray and red dogwoods, all of which came from the Byron Forest Preserve's own tree nurseries.

Transplanting work began in the spring and was completed in September and October. The newly planted trees will greatly enhance the beauty and playability of the course.

Look for the significant tree groupings to the left of fairways 1, 6, 11, 12, 13 and 16 and the shrub plantings behind greens 7 and 13.

Pictured left, Assistant Superintendent of Park Maintenance, Don Hayenga, plants an ash tree at the south edge of number 12.

## New Plantings

Check out the newly-planted prairie areas on the golf course. Thanks to a couple of local high schools, the golf course has two new plantings.

The first planting was done by the Stillman Valley High School students, who planted approximately 400 wetland species in a stream swale by the 16th tee.

The second planting was done by Byron High School students, who planted approximately 400-450 dry to mesic species on a mogul located along German Church Road in the rough by 10 green.

"I would like to thank these groups again for their efforts," said Naturalist Todd Tucker. "The plantings look great, and I can't wait until they come up next spring to see how they have advanced."



*Byron High School students (below) and Stillman Valley High School students (left) assisted with planting approximately 850 species of prairie at PrairieView Golf Course.*

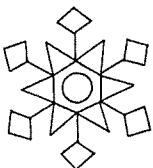


## Don't Miss Out on Winter at the Forest Preserve!

Check out our expanded wintertime program this year. The Park Maintenance staff, assisted by volunteers, enclosed a portion of the south picnic shelter to serve as a warming house where cold, but not defeated sledders, cross country skiers and skaters can get close to a crackling fire with a cup of hot chocolate.

Sled, tubing, and toboggan runs will be ready just as soon as Mother Nature comes through with adequate snowfall. Sled and tube rental will be offered, as well as cross country skis. Two new trails are open this year for cross country skiers, bringing the total to six. The new three-mile Outer Trail holds a challenge along with beautiful scenery.

Don't miss our Holiday Light Show. The displays will be lighted for public viewing daily from 5-10 p.m. Dec. 1 through Jan. 12.



# ***MOUNTAIN SNOW & MISTLETOE***

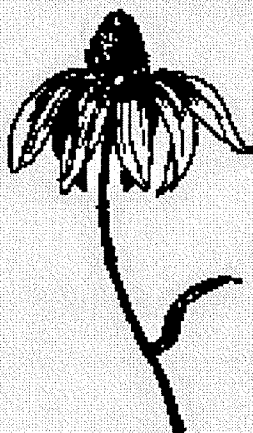
*2nd Saturday Concert featuring*

***BRIDGET BALL &  
CHRISTOPHER SHAW***

**December 9 • 8 pm  
Jarrett Prairie Center**



## ***INSIDE...***



### ***DISTRICT NEWS***

- ***HOLIDAY CRAFT SHOW***
- ***NOTES FROM THE NATURALIST***
- ***NEW WINTER PROGRAMS***

***PAGE 1***

***PAGE 4***

***PAGES 5-8***

### ***PRAIRIEVIEW GOLFER***

- ***'95 SEASON WRAP-UP***
- ***'96 GOLF FEES***
- ***JR. GOLF GETS \$100 GIFT***

***PAGE 1***

***PAGE 2***

***PAGE 4***

**BYRON FOREST PRESERVE DISTRICT  
7993 N RIVER RD  
P O BOX 1075  
BYRON IL 61010-1075**

**BULK RATE  
U S POSTAGE PAID  
BYRON IL 61010  
PERMIT NO 50**

**POSTAL PATRON  
BYRON IL 61010**