

# Byron Panorama

A Publication of the Byron Governmental Agencies

Fall 2002

## Byron Chamber of Commerce hosts Miracle on 2<sup>nd</sup> Street

Celebrate the holidays in Byron during the 6<sup>th</sup> annual Miracle on 2<sup>nd</sup> Street, Friday, November 22. Miracle on 2<sup>nd</sup> Street has quickly become the local tradition that helps ignite the magical feeling of Christmas, and signals the start of the holiday shopping season.

Luminaries light the way to B.J. Way Park and the lighting of the Christmas tree at 6:00 PM. While there, visitors are encouraged to view the BCR Tourism Committee's unique community holiday card display throughout the park. The cards will remain on display until January 1, 2003.

The sights and sounds of the holiday season continue on 2<sup>nd</sup> Street from 5-9 PM.

## Celebrating the Holidays in Byron Holiday Lights Displays

Turn on your outdoor holiday lights during the first week of December, and be eligible to win a cash prize! BCR Tourism, together with the Byron Chamber of Commerce, is holding a contest to identify the Byron homes that are "best dressed" for the holiday season. Homes in the Byron School District and the Nordic Woods Subdivision will have the opportunity to have their outside light displays judged for the contest. Initial judging, by BCR Tourism and the Chamber office, will take place from December 1-6. Final judging by impartial non-Byron residents, is scheduled for December 7 and 8. A cash prize of \$75.00 will be awarded to the 1<sup>st</sup> place home, \$50.00 for the 2<sup>nd</sup> place home, and \$25.00 to the home that places 3<sup>rd</sup>. What do you have to do to be a part of the contest? Simply turn on your holiday lights from dusk until 10:00 PM from December 1-8. Our judges plan to view all the houses in the areas listed above, but feel free to call the Chamber office at 234-5500 if you want to bring special attention to your unique display, or if you need additional information.

- 5-9 PM **Festival of Trees** at the Byron Museum of History, 106 N. Union Street -Sponsored by the Byron Museum District
- 5-9 PM **Visits with Santa Claus**, Blossom Basket Florist, 125 W. 2<sup>nd</sup> Street  
Sponsored by Exelon Nuclear, Byron Generating Station, Gift from Santa compliments of Rockford Health Systems/Rockford Clinic, Byron
- 5-9 PM **Baking Contest Winners** - Displayed at the Byron Bank
- 5-10 PM **Free Horse-Drawn Carriage Rides** - Sponsored by Stillman BancCorp, N.A.  
Passenger loading on 2<sup>nd</sup> Street between Walnut and Washington Streets (in front of Municipal Building)
- 5-10 PM **Free Horse-Drawn Trolley Rides** - Sponsored by Byron Bank  
Passenger loading on Walnut Street in front of the Byron Bank
- 6:00 PM **Christmas Tree Lighting** in B.J. Way Park-Blackhawk Drive and Washington St.  
6:15-8:45 PM  
**Live Entertainment** - In parking lot of Municipal Building - 2<sup>nd</sup> Street between Walnut and Washington

- 6:15 - 7:00 PM TBA
- 7:00 - 7:45 PM Byron-Winnebago Madrigal Singers
- 8:00 - 8:45 PM Byron Civic Theatre
- 6:30-7:30 PM Prairie Youth Orchestra

Performing at various locations

6:30-8:30 PM Live Mannequins in store front windows

Plus... Community Group Fundraisers and Give-Aways

Girl Scout Troops caroling at the tree lighting

An opportunity to win a beautiful holiday wreath sponsored by:  
(as of 10/15/02)

- |                              |                              |
|------------------------------|------------------------------|
| Asher Apartments and Storage | Asphalt Maintenance          |
| Byron Bank                   | Byron Lions Club             |
| Byron Savings and Loan       | Hulsebus Chiropractic Clinic |
| Lake Louise Campground       | Norup Trenching, Inc.        |

Please join us for this very special holiday celebration. For more information, contact the Byron Chamber of Commerce office at 234-5500.

**ATTENTION VOTERS WARD 1 & WARD 3**  
The new polling place for Ward 1 & Ward 3 is located at:

**CITY HALL**  
**232 W. SECOND STREET**

Please remember to vote at your new polling place  
on November 5, 2002. Thank you !



**The Halloween Trick-or-Treat hours for the City of Byron are from 5:00 p.m. to 8:00 p.m. on Thursday, October 31, 2002. Happy Halloween!**

## Inside this issue . . .

|                                 |       |
|---------------------------------|-------|
| Byron Chamber of Commerce ..... | 1, 16 |
| City of Byron .....             | 1, 16 |
| Museum District .....           | 2, 3  |
| Public Library .....            | 4     |
| Park District .....             | 5, 6  |
| Forest Preserve .....           | 7,    |
| Fire District .....             | 12    |
| School District .....           | 13-15 |





# Byron Forest Preserve News

7993 North River Road, Byron (815) 234-8535

Preservation • Education • Recreation



## Fall Preschool Registration Continues

OCTOBER - DECEMBER 2002

Is there a preschool age child in your family? If so, we have a place for them to learn and have fun at the same time! The Byron Forest Preserve Preschool has openings for 3, 4 and 5-year olds to attend either a morning or an afternoon session. Openings are available for classes meeting on Monday and Wednesday morning or afternoon and for Tuesday and Thursday morning. Morning classes meet from 9:00 to 11:00 a.m. and afternoon class meets from 1:00 to 3:00 p.m. The maximum enrollment for each session is 14 children.

Preschool classes are taught by Mrs. Dawn Schad, a certified teacher, along with classroom aide, Mrs. Kim Hada. The children spend time each day working on small motor skills with puzzles, stringing beads, shape sorters and other manipulative toys as well as enjoying games and outdoor activities to improve their large motor skills. Lesson time introduces the children to the alphabet and the sounds letters make, colors, numbers and other kindergarten readiness skills. Children also have an opportunity for free play where they can learn sharing and use their imaginations. The facilities at the Jarrett Prairie Center including the museum, the prairie trails and the woodland areas are all utilized to help the children learn to enjoy nature and learn more about their world. Each class session finishes with story time to reinforce the theme we are currently working on, such as "families and where do they live," "fall" and various holidays.

The monthly tuition for preschool attendance is \$55.00 per child (no discount is given for multiple children per family attending). Optional class field trips are taken periodically that may include a nominal fee per child. In October we will be taking a field trip to the Pumpkin Patch in Caledonia, Illinois, to enjoy the fall season and all the fun Halloween-related activities they have to offer!

You can register your child for preschool by coming to the Jarrett Prairie Center or call for information at 234-8535, extension 205 or 217. Mrs. Kim and Mrs. Dawn would like to have your child become a member of our preschool!



## Gift Shop News

Come visit some friendly people at the Jarrett Prairie Center Gift Shop.

We now have 100% pure honey for sale in the Jarrett Prairie Center Gift Shop.

- 4 lbs. - \$10 plus a free squeeze bear for dispensing;
- 2 lbs. - \$5; 12 oz. - \$2.
- Honey stirrers;
- Honey candy in assorted flavors
- Honey cook books.
- Maple Syrup for sale;
- Maple syrup cook books.
- Necklace with meteor granules in it? We have them for sale too!
- Water jugs,
- Little buffalos, and
- Takealong identification bags

Once you've visited us and you would like a special souvenir, we have all of the above and much more at reasonable prices.

We look forward to seeing you.



## Welcome New Staff!

**Perry Pitney** is a life-long resident of Rockford, IL, and graduated from Rockford schools. He was the CEO of Rockford Rescue Mission-now Hope Place- from 1987-2000. Perry currently is the music and worship leader at the Stillman Valley Congregational Church. An accomplished musician and artist, Perry also enjoys the outdoors, hiking, hunting and fishing. He and his wife Sherry live just outside of the Byron area with their two sons Luke and Zach. Perry will be teaching in our Education department.

**Mary Alice Peterson** comes to us from the East Coast, newly graduated from the University of Pennsylvania with a degree in Environmental Studies. Although both her parents grew up in the Rockford area, her father's career in the Navy kept them in Maryland. She now lives with extended family just north of Kings. Mary Alice is loving country life, having left Maryland to escape the crowded conditions and traffic. As a member of the Education Department, she is running Public Viewing Hours at the observatory and helping out with field trips at the Jarrett Prairie Center. She also works as a teacher's aide in the Family Literacy Program at Kishwaukee College and is a Pampered Chef Kitchen Consultant. For hobbies she enjoys decorative painting, Revolutionary War re-enacting, and playing both the violin/fiddle and upright bass.

## FREE KIDS CONCERTS!

Moms & dads, grandparents, aunts & uncles, brothers & sisters, friends! Come and enjoy FREE KIDS CONCERTS at the Byron Forest Preserve in the Jarrett Prairie Center. Concerts are every Second Saturday of the month, starting in November 2002 through April 2003. Concerts are approximately 1 hour long from 3:00 pm to 4:00 pm.

Don't miss an opportunity to experience many diversified cultures and teachings!

**November 9<sup>th</sup> 2002 Kids Concert:** Will feature Mr. Harry J. Russell from Rockford, IL. Harry does chalk talks and drawings for school children and churches. Keeping the drawings easy to understand, the children learn to draw along with Harry as he tells wonderful stories. This is his way of capturing the interest of the children, drawing them into the world of circles, stick figures and the alphabet. A life long learner, Harry helps children and adults alike experience the joy of learning to draw. Come on out and visit with Harry as he draws wonderful pictures and weaves funny tales!

**December 14<sup>th</sup> 2002 Kids Concert:** Features our very own Byron Police Department! Come on out and talk with the Officers as they teach the children about **STRANGER DANGER** and other safety issues. Even though most children are aware of the importance of not talking to strangers and calling 911 in an emergency situation, this is an opportunity for them to hear and relearn these things from the Officers themselves. Come on out and visit with the Byron Police Department!



## ~ Programs ~

### Picasso on the Prairie- Art classes for kids

Dates: Saturdays starting the second week of November  
Time: 11:30 A.M.- 1:00 P.M.  
Cost per three week session:  
\$25 (includes all supplies)

This program offers art instruction for children ages 8-14. It will be nature-themed, with basic instruction in pencil, shading, color, drawing from real life, and watercolor painting. Students will use animals in the museum display, live animals, and the prairie landscape itself as subjects. No previous art skills are required. This is a fun program that will enrich children's natural creativity and perception while allowing them to explore several different artistic mediums. Each of the four session runs for three consecutive weeks, so that learning progresses each Saturday.

Session 1- shapes, outline, and shading  
Session 2- color, contrast and light  
Session 3- perspective and realism  
Session 4- basics of watercolor

November 9, 16, 23  
December 7, 14, 21  
January 4, 11, 18  
January 25, February 1, 8

### School's Out! Winter Camp

Dates: December 30, 31; January 1, 2, 3  
Time: 9 A.M.- 4 P.M.  
Cost per child: \$20/day

This camp is for children ages 6-12. Daily activities include hikes, games, and crafts. Weather permitting, we will also go cross-country skiing, sledging, and play in the snow. Other outdoor activities may include learning tracking, winter edibles, the art of snow sculpting, and how to build a real snow fort.

### Camping Trip to Starved Rock State Park

We'll be camping, canoeing and hiking around one of Illinois most popular State Parks. Canoes, tents, and all food is provided. Call now to register for this exciting program.

DATES: Nov 1-3.  
TIMES: Leave Byron at 5pm on Friday and back at around noon on Sunday.  
FEE: \$98/tent that fits four people.  
AGES: All  
LOCATION: Utica, Illinois  
OTHER: Call ahead to register at 234-8535.

### Need a fund raiser?

We need your group or organization to set up scary scenes along our hayride route for Halloween on the Prairie on October 27<sup>th</sup> from 1-6pm. We give out BIG prize money to best scene. Plus everyone gets a bonus check for just showing up! Call Richie at 234-8535 X 217 for more details.

### Hunter Safety Course

The Byron Forest Preserve is hosting a 10 hour class for all first time hunters. Topics covered include wildlife management, rules, and gun safety. Students must complete all classes and pass a written exam to obtain a certification card.

LOCATION: Jarrett Prairie Center  
DAYS: November 4, 6, 8  
TIMES: 6-9pm, 6-9pm, and 6-10pm  
FEE: Free  
AGES: All but must be able to pass written test to be certified.  
OTHER: Call 234-8535, ext. 200 to register.

### Field trips to Natural History Museum, Observatory, and Heritage Farm

Scouts, schools, and senior groups are welcome to the Forest Preserve for an educational and fun tour of our great museums. Staff welcome and give tours for the low cost of \$1.50 per person with a minimum of \$30 per group. We offer many sessions to choose from including prairie ecology, animal encounter, and group dynamics. Call 234-8535, ext. 217 to schedule your next outing with us.

### Rock On! - Saturday Camps

#### New Saturday morning Program!

If your child loves nature, crafts, and games, they will love Rock On Saturday Camp. We meet at the Jarrett Center for two hours of fun with the animals and out on the prairie. This convenient time and day makes it perfect for parents to have some time for their chores. You can sign up for the day or month. Call 234-8535 today.

DATES: Every Saturday during the school year.  
TIMES: 9-11:30am.  
FEE: \$30/month or \$10/day  
AGES: K-5th grade  
LOCATION: Jarrett Prairie Center.  
OTHER: Drop the kids off for a morning to yourself. We'll have tons of fun.

### Halloween on the Prairie

This annual event allows families to enjoy holiday crafts, games, and food. Our popular Haunted hayride will be back with more daylight hours. Games staffed by Byron Park District.

DAY: Sunday, October 27  
TIME: 1-6pm  
FEE: \$2/hayride.  
AGES: All  
OTHER: New item this year includes a giant inflatable toy!  
LOCATION: Jarrett Prairie Center, 7993 N. River Rd.  
Call for more information.

### Natural History Museum Open

DAY: Every  
TIMES: Mon-Thurs 8am-8pm,  
Fri 8am-4:30pm, Sat 9-4pm,  
Sun 1pm-4pm.  
FEE: Free  
AGES: All  
LOCATION: 7993 N. River Rd, Byron, IL  
OTHER: Habitat exhibits, dioramas, audio interpretation, and prairie view.

### Heritage Farm Museum Garners Award of Merit!

The Byron Forest Preserve has won an Award of Merit for the Heritage Farm Exhibit.

The Illinois Association of Museums commends the Heritage Farm Committee and Board of Commissioners for having the vision to set aside land and a facility for interpreting local farm heritage. Based on the publicity and newspaper articles, there was good community support for developing the site and good use of available resources.

### ORANGE-THROATED DARTER

by Elizabeth Swihart

Last week in my Field Zoology class we were studying fish. We caught an interesting fish, the orange-throated darter, in a small stream in near Monmouth, IL. Darters are a fairly common group of fish in Illinois. They are often confused with minnows because of their small size, though they are more closely related to perch.

The orange-throated darter (*Etheostoma spectabile*) is 1 to 2.5 inches in length. They are usually yellow-olive in color. During the spring/summer breeding season they develop olive-colored blotches. Also during breeding season, the breeding males have orange gill covers and an orange throat, which is where they get their name. The females usually do not develop the orange throat. They lay up to 1000 eggs which hatch in 7 to 10 days.

The orange-throated darters live in small, clear streams. They prefer streams with gravelly bottoms. They usually survive best in temperatures from 33° to 81° F. While the orange-throated darter prefers clear water, it can survive in water that is much more turbid than other darters can tolerate. They lack a swim bladder and tend to stay near the bottom of shallow streams.

While the darters are much too small for humans to eat, they still have an important role in stream ecosystems. They feed on insect larvae, which helps keep some insect populations under control. They serve as food for many birds and predatory fish. The orange-throated darters are also good indicators of stream quality because of their habitat specificity and low tolerances to pollution.



# Wanted: Volunteers

COME ONE! COME ALL!  
ALL AGES \* ALL INTERESTS

The Byron Forest Preserve offers numerous and varied volunteer opportunities at the Jarrett Prairie Center, the Prairie Preserve and the Prairie View Golf Course. ALL volunteers are welcome and needed to assist with any or all of the following projects, to name a few:

- |                           |                          |
|---------------------------|--------------------------|
| *Beekeeping               | *Nature Walks            |
| *Bluebird Houses          | *Observatory             |
| *Filling Divots           | *Operation Santa Claus   |
| *Gift Shop                | *Organizing the Library  |
| *Greeting Visitors        | *Prairie Restoration     |
| *Halloween on the Prairie | *Ranger Rick Program     |
| *Harvesting Seeds         | *Teaching                |
| *Junior Golf Tourney      | *Tuesday Volunteer Group |
| *Maple Syrup-Making       | *NEW WOODSHOP!           |
| *Museum Operation         | *MUCHMORE!               |

The Byron Forest Preserve has many projects and special events that would greatly benefit from your assistance and expertise as the district continues to grow and develop new programs for the Prairie, Museum, Gift Shop & Golf Course.

**\*Choose a time to volunteer that fits your schedule!**

\*Join us each Tuesday for fun projects from 8:30-11:30am

\*Count your volunteer time as a Class Project!

\*Make it an Eagle Scout Award or Silver/Gold Award Project!

FOR MORE INFORMATION: CALL KIM AT 815-234-8535 X203

## WHAT DO VOLUNTEERS DO?

We have a woodworking department that specializes in projects for the Forest Preserve, a Nature Center that houses many different facilities for the community, a Prairie that envelopes over 600 acres, an Observatory that encompasses large telescopes for public viewing, and a Golf Course that draws people from every direction. With that in mind, we truly appreciate the support we receive each month from the volunteers.

## IS THERE A SPECIAL TIME VOLUNTEERS MEET?

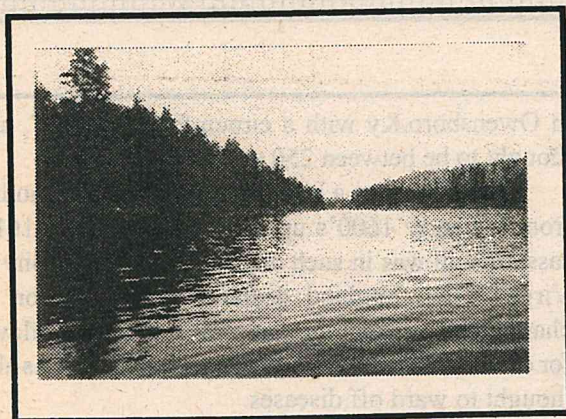
Volunteers are welcome just about anytime to assist with the many projects that are going on. If you would like to take part in the morning volunteer group, we meet Tuesday mornings from 8:30-11:30 in the Jarrett Prairie Center Blazingstar Room. We work on projects from the Education, Observatory, Clubhouse, and Maintenance Departments.

Although volunteers can set their own schedule, some activities require certain hours to best serve that division. For example, if you'd prefer to work on the prairie with beekeeping, honey making, brush removal, and prairie maintenance, the best time to work is between 6:30 a.m. and 2:30 p.m. If you'd like to help with at the Jarrett Prairie Center, the center is open between 8:30- 8:00, but most employees leave before 5pm. Note: Because the Observatory operates both daytime and evening hours, we do have an employee that stays into the evening hours to assist the volunteers.

Please call 234-8535 X 203 if you would like further information. For Observatory info call X217. We welcome your assistance!

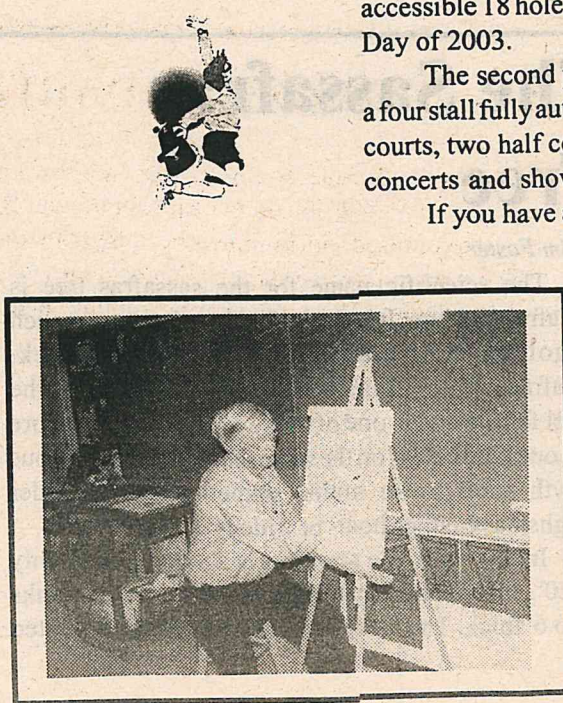
## WHERE DO VOLUNTEERS MEET?

For those who enjoy working inside, we need volunteers to help with education projects, special events, museum tours, the Observatory, and the workshop. For those who enjoy being outside, we need individuals to expedite with Prairie Maintenance, Golf Maintenance, beekeeping, brush removal, birdkeeping, hosting special events, and much more! THERE IS A PLACE FOR YOU!



Pictured above- Register now for an exciting time canoeing, camping, and hiking at Starved Rock - November 1-3rd.

Pictured on right - Byron Forest Preserve's Kids Concert



# "THE ROCK" Skate Park

IS WAITING FOR YOU!

# DEFY GRAVITY!

Do you have a bike? skateboard? in-line skates? or a scooter?

Are you looking for something fun to do year-round?

Whether you are a beginner, intermediate, or advanced athlete, a dad, mom, teen, or child,

"THE ROCK" is the place for **YOU!**

## Hours of Operation:

Monday - Friday 4:00-9:00 pm

Saturday's 10:00-3:00 & 4:00-9:00 pm

Sunday's 12:00-5:00 & 5:30-9:00 pm

(Rain or shine...we are an indoor/outdoor park!)

We now offer **birthday parties, group rates, season passes, and Gift Certificates.**

Location: 6845 N. German Church Road, Byron, IL 61010

(Located across the street from the Prairie View Golf Course)

CALL: 234-ROCK (for more information or to schedule an outing today!)



# STONE QUARRY RECREATION AREA: UPDATE

The Byron Forest Preserve has completed construction of the first stages of phase one development at the Stone Quarry Recreation Area. We have completed construction of the recreation path leading from the intersection of German Church and River roads to the Stone Quarry Recreation Area. This path will allow users of "The Rock" skate park and "PrairieView Golf Course" access by bike or by other means conducive to the recreation path. The new path will also allow past users of the forest preserves recreation path an added ½ mile of paved walk way.

The new recreation path will allow the youths of the community who are using "The Rock" skate park to purchase refreshments from PrairieView's clubhouse until the teen center at the quarry is built. They will be able to purchase items not available in the vending machines at the quarry such as fresh deli sandwiches and/or ice cream. The staff at PrairieView's club house is more than willing to serve the skating public.

The new skate park "The Rock" was opened on September 15<sup>th</sup> with a ribbon cutting ceremony. The ceremony was a great success. Everyone who was involved with the project was present, including A.T.A.C (Adult & Teen Activity Committee) the conceptual think tank for the Stone Quarry Rec. Area and Senator Brasynski, who awarded the B.F.P.D. a \$70,000 grant for the cause was also present.

The other projects involved in phase one will be a teen center to accommodate large group outings or after school functions, as well as an admission and refreshment center. We hope to have the recreation building completed by Spring of 2004. The final project of phase one will be the construction of a handicap accessible 18 hole miniature golf course. We hope to have this open by Memorial Day of 2003.

The second phase of construction at Stone Quarry Rec. Area will include a four stall fully automatic batting practice cage, two championship sand volleyball courts, two half court basketball courts and possibly an outdoor auditorium for concerts and shows.

If you have any questions or concerns, please feel free to contact Ed Clift, B.F.P.D. executive director, at 234-8535 Ext. 201 between 8am - 4pm. Or come out to see for yourself the many improvements going on at the B.F.P.D..

PrairieView Banquet Hall is available for rental for wedding receptions, family parties, business meetings, etc. Call Karla at 234-4653 ext. 11 for more information.

Check out Holiday Sales at the Clubhouse Pro Shop. Great gift ideas and stocking stuffers!



## Celebrate Your Birthday at the Forest Preserve!

We will provide a safe, nature-oriented environment, crafts, games, and activities relating to the theme chosen. There's something for everyone! All parties last two hours and are designed for children ages 5 and up.

### Standard Party

\$5 per child, \$30 minimum

Adults are responsible for refreshments, party favors, decorations, and will help with cleanup.

### Deluxe Party

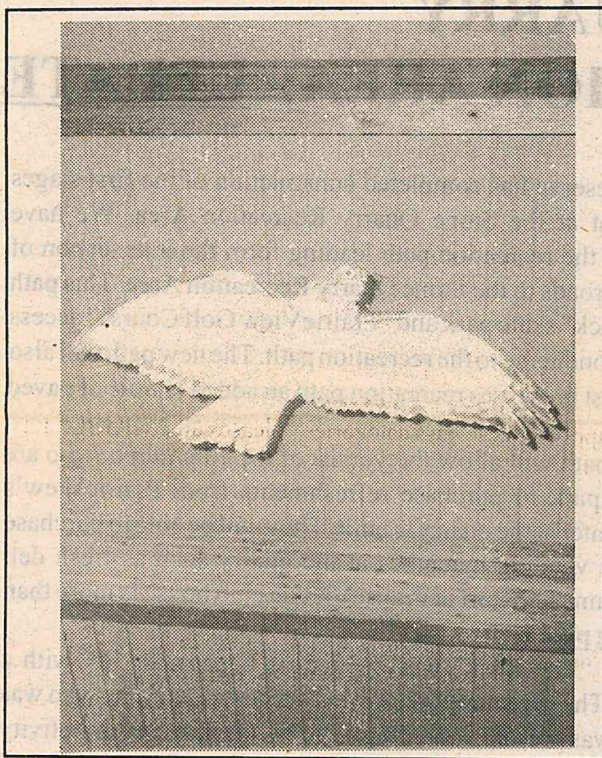
\$60 flat fee. Covers 12 children.

We will provide cake, ice cream, punch, a birthday banner, and all cleanup.

### Party Themes

#### Choose a theme:

Native Americans - Experience the way of life of the Native Americans and make your own Indian child's toy to take home!



Can you find this red tailed hawk in our Natural History Museum? Open every day!



## Star Notes Weiskopf Observatory

DAYS: Tuesdays and Saturdays

TIME: Dusk

FEE: Free

AGES: All

LOCATION:

7993 N. River Rd, Byron

OTHER: Closed if cloudy. Call for viewing conditions at 234-8535, ext. 216.

The Sky's The Limit - Enter a real working observatory and explore the stars, moons, and planets. Create a galaxy in a jar or other craft to take home!

Goodness Snakes - Meet a real live snake up close and get a feel for how they live, then make your own pet snake to take home!

Insects of Our World - Discover the amazing world of bugs, then make and race your own tumble bug or other craft.

Butterflies Are Fun - Where does a butterfly go when it rains? Have fun acting out this story and make a butterfly mobile to hang in your room!

To schedule your next birthday party, call the Byron Forest Preserve District at 815-234-8535 ext. 217.



## Banquets . . .

Need a beautiful place to hold your holiday party or your next social or business occasion?



PrairieView offers the Pavilion Banquet Hall and a meeting room located in the clubhouse.

The Jarrett Prairie Center has several rooms available for rental at reasonable rates. The newly remodeled Prairie View room, overlooking the splendors of nature in

all seasons, the Blazingstar Room and the Indigo Room, are all located in the Jarrett Prairie Center. These banquet rooms are available for seminars, family reunions, outdoor education classes, group tours, and a variety of other uses. The Jarrett Prairie Center accommodates up to 250 people. Full bar service is available.

There are also two picnic shelters available. The shelters include tables, electricity, water, grills, and handicap accessible restrooms. Plus, you and your guests will enjoy the priceless natural beauty of the Byron Forest Preserve. If you would like more information, please call Robin at 815-234-8535 ext. 200.

## Recycling Station

The Byron Forest Preserve, in conjunction with the Ogle County Solid Waste Management Department, has established a recycling station at the Forest Preserve. The station accepts glass, aluminum, plastic #1-5 & #7, tin, steel, mixed paper, cardboard, and newspaper. The bin is located in the maintenance parking lot at 7993 N. River Rd in Byron.

The station is open during daylight hours, seven days per week. Please recycle responsibly by leaving the area cleaner than when you arrived.

## The Sassafras Tree

by Jim Foster

The scientific name for the sassafras tree is *Sassafras albidum*. It is also called by other names such as golden elm, cinnamon wood, green stick, sassafras, and saxifrax. Sassafras is a member of the laurel family and is one of the few trees that has more than one kind of leaf on the same plant. Young vigorous growth tends to be mitten shaped where as older boughs have either boat- or trident- shaped leaves.

In the north, the sassafras is a small tree of only 15-20'. In the south it can reach 80' or more with trunks up to 6' thick. The world's largest sassafras is located

in Owensboro, Ky with a circumference of 21', and thought to be between 250 and 300 years old.

Sassafras was a highly sought after commodity from the early 1600's up until the 1950's. In 1610, sassafras oil was in such demand from the colony of Virginia that England declared it a condition of charter. The oil from the sassafras was used as flavor for candies, root beer, soap, and perfumes. It was also thought to ward off diseases.

Then in the 1950's sassafras began to lose its appeal after rumor spread that you could get sick from drinking the tea. In 1960, the Food and Drug Administration confirmed that the major chemical (safrole) in sassafras was hepatocarcinogenic. By 1976 the FDA banned sales of sassafras tea, roots, and oils.



# PrairieView Golf Course News

North German Church Road, Byron (815) 234-GOLF(4653)

## 2002 - A YEAR OF TRANSITION AT PRAIRIEVIEW GOLF COURSE

For the first time in six years there were no major construction projects ongoing at PrairieView Golf Course. Byron Forest Preserve’s capital crew moved east across German Church Road and will begin working on the initial stages of the Stone Quarry Recreation Area. Golf maintenance staff spent this year working on small projects. In the spring we completed the fairway bunker project on hole 18. Planted 4 pine trees, finish graded, seeded and matted the area. A contractor transplanted 13 large oak trees at strategic locations on the course. We landscaped around our new scoreboard and the adjacent island located in the clubhouse south parking lot. Behind 6 green two new moguls were shaped and seeded. Throughout the season golf maintenance worked on the landscape for PrairieView’s new practice center. We built two wall stone planters to contain the center’s sign board, installed several moguls and numerous boulders and limestone outcroppings and planted evergreen trees and shrubs. In the fall we planted ornamental grasses and forbes to give the practice center a natural look. In October we finished planting 14 tee bed, built and planted the new beds for 7, 13 and 18 tees. Two tee construction projects - 12 black/ blue expansion and the alternate driving range tee have been placed on hold.

PrairieView will never really be completed. There will always be some ongoing improvement, but basically we have switched to a maintenance mode of operation. In the coming years our goal as golf maintenance will be to make PrairieView’s existing features such as greens, tees, fairways, bunkers, roughs, trees and landscape areas the best they can be. We will attend to details, strive to provide for our customers a pleasant and interesting golfing experience from the time they pull into the clubhouse parking lot until they walk off the 18<sup>th</sup> green. In 2003 we will set aside space on one of the clubhouse bulletin boards to provide exchange of ideas between golfers and the golf course superintendent. We will post 1) Course conditions, 2) A schedule of maintenance procedures explaining why we do them, 3) Information highlighting points of interest, such as blooming prairie plants. We will also provide there a place for golfer questions and comments.

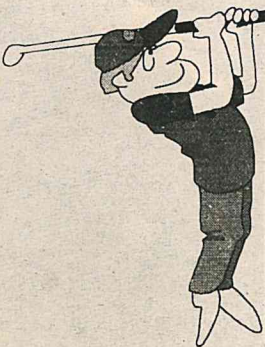
The trees are growing up, the greens have an established feel, the native areas and the clubhouse landscape have filled in. PrairieView is maturing. The golf maintenance staff looks forward to its new role as care taker of this 18 hole golf facility. All of us at Byron Forest Preserve expect a long and glorious future for PrairieView Golf Course.

PrairieView Golf Course  
Rt 72 & German Church Road, Byron IL 61010  
815-234-4653  
www.prairiviewgolf.com

### 2003 SEASON GOLF PASSES

|                                 | Before<br>12/21/02 | Before<br>3-17-03 | After<br>3-17-03 |
|---------------------------------|--------------------|-------------------|------------------|
| Resident - Single               |                    |                   |                  |
| Adult                           | \$425              | \$465             | \$495            |
| Senior*                         | \$270              | \$305             | \$335            |
| College Student                 | \$165              | \$195             | \$220            |
| Junior II*                      | \$120              | \$155             | \$175            |
| Resident - Couple/Family        |                    |                   |                  |
| Adult                           | \$650              | \$710             | \$760            |
| Senior*                         | \$430              | \$470             | \$505            |
| Out of District - Single        |                    |                   |                  |
| Adult                           | \$545              | \$585             | \$615            |
| Senior*                         | \$345              | \$380             | \$410            |
| College Student                 | \$205              | \$235             | \$260            |
| Junior II*                      | \$140              | \$175             | \$195            |
| Junior I*                       | \$120              | \$155             | \$175            |
| Out of District - Couple/Family |                    |                   |                  |
| Adult                           | \$775              | \$835             | \$885            |
| Senior*                         | \$555              | \$595             | \$630            |

\* Certain restrictions apply to these pass categories - please call 234-GOLF for more information.



### Do You Know An Adult Like This?

by Heidi Tennant

- Do you know an adult who:
- Avoids helping his/her children with schoolwork?
- Doesn't attend parent/teacher conferences?
- Does not emphasize reading at home?
- Doesn't use the library?
- Is hesitant to seek a new, better job?
- Avoids interactions that involve paperwork (going to the doctor, becoming a Scout leader, refinancing a mortgage...)?
- Has tried to obtain his GED but not succeeded?
- Is reluctant to try new experiences (a new restaurant, a festival in the next town, using a computer)?
- Seems to gain most of his information from TV?

These are some indicators of an adult with low literacy skills. The problem is more common than most people think; **one in five adults** in our region reads at or below the 4<sup>th</sup> grade level. (This level includes words like *price*, *future*, *common*, and *anger*.)

But help is available. Adults can obtain free, confidential, one-on-one tutoring through The Literacy Council at the Byron Public Library. Adults new to the Council's program talk with a reading specialist to determine what their goals are and how they might benefit from tutoring. They are then matched with a trained volunteer tutor, who they meet with about two hours a week at one of a variety of convenient locations.

Over the last few years, adult learners at the Council have improved their reading ability by an average of 1.5 grade levels in about a year of tutoring. Services are also available to adults learning English as a second language.

How do you suggest tutoring to an adult? Try this: "Kerry, would you benefit from getting some help to improve your reading skills? I know a place that's free and confidential!" To find out more, please call The Literacy Council at 234-4140 or visit [www.theliteracycouncil.org](http://www.theliteracycouncil.org) Information is also available about becoming a volunteer tutor.