

Winter '96 / Spring '97

Byron Panorama

A Publication of the Byron Governmental Agencies

Prairie View Golf Course Set to Open March 26

PrairieView staff and Byron Forest Preserve District officials eagerly anticipate an earlier than normal start to the golfing season in 1997 as we begin our fifth full season of operation.

While the official opening day is Wednesday, March 26 (weather permitting), golfers are encouraged to call the course at (815)234-GOLF before this day for current course conditions. Early season golf cart riders will receive an added benefit this spring. All 18 holes are now fully paved for motorized golf carts allowing for cart usage practically any time the course is open for play.

As all area residents are fully aware, the Byron Forest Preserve District and PrairieView Golf Course, as well as all other Ogle County governmental agencies, were subject to substantial budgetary reductions due to the recent tax reassessment rulings. For the most part, PrairieView was able to weather the 1996 budget reductions very well. The course remained in excellent condition, grounds staff completed several major projects such as moving and planting trees, drainage work, and new cart paths, and golf rounds were up over the previous season totals.

As for the 1997 golf season and beyond, PrairieView's future remains bright. New course improvements, facility upgrades, as well as new activities and events are all in the planning stages for the coming season! The entire forest preserve and golf course staff is committed to promoting PrairieView as a valuable and integral recreational asset to the community. We greatly appreciate your continued support during the 1997 golfing season.

Byron Park District Has Programs for the Entire Community!

Have the holidays found you with a few pounds to lose or just the need to tone up? We have a wide range of programs and activities to meet your needs. Since getting started seems to be the hardest part of a fitness program we offer many things to get you going and keep you active. Whether it is racquetball, aerobics or weight training we have it all at convenient items and low prices.

Our programs are not only for adults though, we offer a wide range of activities for children 3 to 18. From tumbling to baseball we have it all! When children engage in activities it promotes self confidence, and social development and physical improvement.

A brief listing of our facilities and programs is listed inside this issue of Panorama. For complete information on these and other park district programs please call our office which is located in the Byron High School at 234-8435.

To our Community:

The Byron Panorama presents our *community in action* and reflects programs, staff news, and activities of contributing governmental agencies. Often community residents are unaware of local events, and it is the goal of this newsletter to disseminate efficiently and promptly important civic and cultural information to our residents. In recent years, Byron has exemplified a community vision and a collective vitality that has set the standard for progress in our area. To maintain the foresight we seek, we welcome your feedback regarding the effectiveness of our efforts. Please forward all comments, suggestions, or concerns to Byron Panorama, P.O. Box 911, Byron, IL 61010



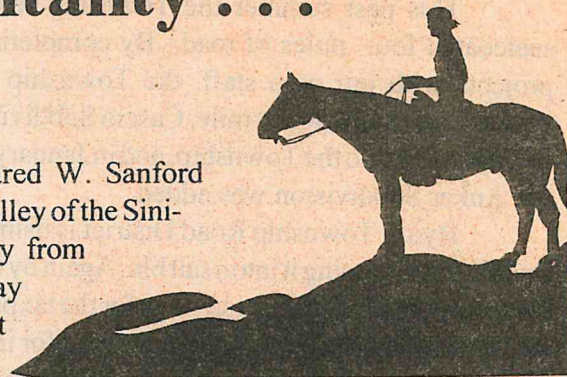
A panoramic view of Byron's main street on January 7, 1918 after a snow storm.

Vistas . . . Vitality . . . Vision . . .

On July 1, 1835, as Jared W. Sanford traveled through the unsettled valley of the Sini-sepo or Rock River on his way from Dixon's Ferry (Dixon) to Midway (Rockford). His journey brought him to a great horseshoe bend where the river arced from its southward path to run east and west for a short distance as it meandered on its way to the Mississippi River. Sanford was impressed. The vista of the river there showed him much - rich soil, abundant water, plentiful timber, and Jared Sanford embraced the panorama and the land and promptly set a claimstake into the loamy earth. Thus, the town of Byron was born.

During the 162 years since Sanford made his claim, Byron residents of many generations have shaped a new vista in the river valley with their legacies of growth and progress. To that palette of progress we still dab our colors today in ever more impressive hues. Color our schools excellent; color our forests protected; color our opportunities many; and color our vitality strong.

As the Rock River moves in its ever steady and endless course, let us in Byron so move, taking lessons from our river, and make our way toward tomorrow with fresh vision and hope for new vistas of learning, sharing, and pride.



Inside

This

Issue

Chamber Business	2
Byron Township News	2
Byron Forest Preserve	3-8
Byron School District	9-15
Byron Public Library	16, 17
Byron Museum	18, 19
Byron Park District	20-22



Byron Forest Preserve News

7993 North River Road, Byron (815) 234-8535



Wholesome Harmonies

Second Saturday Folk Concerts continue with Art Thieme on March 8, 1997. Carrie Newcomer will return to the Jarrett Prairie Center stage on April 12.



In 1991, Newcomer released her first solo recording, 'Visions and Dreams'. In 1994, Carrie joined the respected Philo/Rounder Records family when they picked up her 'An Angel at My Shoulder' recording. Carrie's 1995 Philo release, 'The Bird or the Wing', was similarly built upon a foundation of well-crafted songwriting and engaging instrumentation.

Carrie Newcomer has performed with Bonnie Raitt and Bruce Hornsby in such places as Carnegie Hall and the Seattle Stadium.

May 10th brings O'Hara and Laffey to the Jarrett Prairie Center stage.

Concerts start at 8 pm at the Jarrett Prairie Center and tickets are \$8 per person at the door or call (815) 234-8535 to reserve tickets.

—Upcoming Classes—

Firm & Flex (Toning Class)

March 3
Free Class on February 26

Basket Making

March 10 & 17

Beginner Home Landscaping

April 22 & 29

Basic Organic Gardening

April 8 & 15

More classes are being organized.
Please call 815-234-8535 for details or
if YOU have any ideas for classes or programs.

Fun! Fun! Fun!

Country & Western Line Dancing

Swing your partner round-n-round! This is the perfect class for anyone who wants to kick up their heels. PrairieView Golf Pavilion on German Church Road-Wednesdays beginning February 19-6:30-8:30 pm-Six-week class - \$15 per person in advance or \$20 per person the evening of first lesson - Instructor Patty Hayenga

Sky Voyages

Take a voyage to the skies during public skyviewing at the Weiskopf Observatory! In February, Cancer and Leo take the stage and Sirius shines brightly in the south. March sees the return of Comet Hale-Bopp to the evening skies. It may be as bright as Hyakutaki was last spring. Dress for the weather. Please call ahead to confirm viewing conditions. Weiskopf Observatory - First & third Saturdays and second & fourth Tuesdays - 6-10 pm - Free admission - Instructor Lisa Johnson

Lunar Eclipse Party

To the moon, to the moon! Come and view a near total eclipse of the moon. Coffee, hot chocolate, and snacks will be provided. Weiskopf Observatory - Sunday, March 23 - 10 pm-1:30 am - Free admission - Instructor Lisa Johnson

Volunteers Needed

All ages, interests, shapes, and sizes! All are welcome to assist with prairie restoration, observatory, gift shop operation, maple syrup making, junior golf tournament, filling divots, and much more! Call Barb at 815-234-8535.

Preschool Classes

Children will be introduced to a lively, limitless world around them! The curriculum includes art, music, and lots of imaginative play! Nature preschool classes offer children the opportunity to have fun and interact with other children their own age while learning about the wonders of nature. Children must be 3 - 5 years old and will meet every Wednesday or Thursday. Classes are held at the Jarrett Prairie Center's Nature Nook.

Wednesdays 9-11 am \$22 per month
Wednesdays 1:30-2:30pm \$10 per month

Thursdays 9-11 am \$22 per month
Instructor: Barb Wingert

Junior Ranger Rick Nature Club

An exciting program has begun at the Byron Forest Preserve, Junior Ranger Rick! This program features interacting nature projects for boys and girls, kindergarten through second grade. Hey kids, why sit in front of the television after school when you could be sledding, making bird feeders, or just having fun while exploring and discovering the wonders of nature. You will also find out how you can help take care of our home, the earth. Junior Ranger Rick meets at the Jarrett Prairie Center on the first & third Wednesdays of the month from 3:30-5:30 pm. The cost is \$12 per month. The instructor is Barb Wingert. Hey parents, bus transportation is available to pick up your child from his/her school and transport him/her to the Jarrett Prairie Center and then you pick them up at 5:30 pm. For more information or to register, call 815-234-8535.

Stepping Out

Education Assistant Lisa Johnson will continue to lead monthly nature walks through 1997. These morning walks focus on the birds and, during the growing season, wildflowers of the Byron Forest Preserve. The Prairie Preserve presents an ever-changing palette of life and color. Join us for an opportunity to experience the great outdoors. Walks are scheduled for Saturdays, February 22 and March 29, 8-10 am. Long pants, comfortable walking shoes and binoculars are recommended. Call (815)-234-8535 for times and dates and to register.

New Saturday Skyviewing Hours

Starting in January 1997, the Weiskopf Observatory will be open on the first and third Saturdays and the second and fourth Tuesdays of every month. Public viewing nights are free of charge. Dress warmly for these cold winter nights. The observatory is heated but the telescope dome is not. Viewing sessions start at dusk and last until about 10 pm. The observatory is closed if it is cloudy. Please call (815) 234-8535 to confirm viewing conditions. Please see the program list (left) for special viewing programs.

The Byron Recreation Path - Phase II

Fund-raising efforts for Phase II of the Byron Recreation Path have been steadily moving ahead as committee members gear up for 1997 with a goal of \$73,000 to be raised by March 1st. The total cost of the project will be approximately \$147,000, with half coming from a State of Illinois grant which needs to be applied for by March 1st of this year. If the grant is awarded, construction could begin as soon as Spring of '98.

Recent improvements include the approval by the city to route the path under the bridge at Route 72 and Diamond Streets and from there to connect with the path going into Sunshine Park. From Diamond Street, the path will follow the existing snowmobile path through the city and on up Tower Road to the Byron Hills Subdivision. There will be flashing signals, signs, striping, etc., along the route in order to make it safe and as visible as possible.

The Byron Recreation Path Committee would like to thank everyone who has donated and pledged money and services. The goal is still approximately \$37,000 short of making this vision a reality, so your support is greatly needed.

Should you wish to donate money, please complete the donation slip and return it with a check made payable to: Byron Recreation Path, c/o Byron Bank, P O Box 901, Byron IL 61010.

I would like to donate: ☐ \$10 ☐ \$25 ☐ \$50 ☐ Other \$ _____

Name: _____

Address: _____

Phone: _____

I would like to make this donation in the name of: _____

Attention Crafters!!

Booths are available for the Sixth Annual Holiday Craft Show on Saturday, November 15, 1997, at the Jarrett Prairie Center.

To reserve a booth or for more information about the craft show, please call Cathie Francis at (815) 234-8535 from 7 am - 3 pm, Monday-Friday.

Preserving The Future



Naturalist Todd Tucker

The Byron Forest Preserve has the opportunity to expand the protection of its quality prairie and woodlands. Legislation enacted in 1963 established the nature preserve system to permanently preserve ecologically significant natural land in Illinois. This expansion of the Illinois Nature Preserve will provide future generations with a larger area of land that has a high quality of uniqueness to the local region. The Jarrett Prairie Preserve currently has approximately 140 acres of dedicated preserve and buffer area. The proposed expansion will include the current 140 acres plus an additional 50 acres as dedicated and will add 120 acres as additional buffer. Dedication is the strongest protection that can be given to land. Only very high quality natural lands qualify for dedication as Illinois Nature Preserves.

After the land is dedicated, it becomes part of a statewide system of nature preserves, which is overseen by a nine-person citizen body appointed by the governor, called the Illinois Nature Preserve Commission.

Some of the objectives of the Nature Preserve System are as follows: to provide habitat for native plants and animals, to provide management that will assure the perpetuation of the preserves in as nearly a pre-settlement condition as possible, to allow and facilitate the visitation of the nature preserve for nature observation, study, education, and aesthetic appreciation, in such a manner that it will not modify the natural conditions.

Nature preserves are managed to preserve and enhance natural communities and populations of native plants and animals typical of pre-settlement conditions, using a variety of management techniques, including prescribed fire, brush removal, exotic species control, and exclusion of incompatible uses.

Dedication provides assurance to the land owner that future generations of a family, future personnel in an agency, or future boards of a corporation will, by virtue of the dedication, also protect the natural features for which the area was recognized. To many land owners, the knowledge that their decision to protect this land for future generations, in and of itself, provides great satisfaction.

Nature Gift Shop

The Gift Shop at the Jarrett Prairie Center has many gift items for a "nature lover" you know. Perhaps you will find just the right gift for a birthday. Don't forget Valentine's Day! Prices range from \$.25 to \$40.

There are guide books for trees, birds, prairie plants, and wild edibles, as well as realistic animal puppets, binoculars, games, stickers, and maple syrup and honey from the Forest Preserve's own trees and bees. Hours are Tues. & Thurs. noon-8 pm, Sat. 9 am - 4 pm, and Sun. 1-4 pm.

Jarrett Prairie Center

The Museum will be under additional improvements in February. This is a continuation of the current renovations. Please pardon the inconvenience. The museum portion of the Jarrett Prairie Center may be closed for the first two weeks of February. Programs, classes, trips, and gift shop will continue as usual.

The hours for the gift shop and general public visiting are Tues. & Thurs. noon-8 pm, Sat. 9 am - 4 pm, and Sun. 1-4 pm. Often, there are student field trips, preschool nature classes, and observatory tours occurring on the other days, so we may, incidentally, be open to the public at those times.

Earthkeepers

In the last year, 283 children from five schools have participated in the Byron Forest Preserve's newest program for fourth and fifth graders.

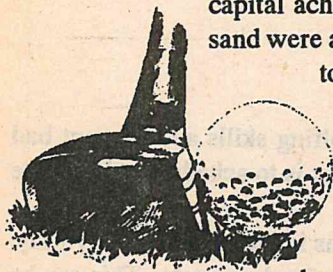
The goal of the Earthkeepers program is to develop youngsters who have some basic ecological understandings and good feelings about the earth and its life, and will undertake not only to live more lightly themselves, but to share their insights and behaviors with others. The concepts presented in this excellent learning adventure are: energy flow (food chains), cycles, inter-relationships, and change.

If interested in this program, please contact Susan at (815) 234-8535.

PrairieView Golf Course News

North German Church Road, Byron (815) 234-GOLF(4653)

Turf Notes



The year of 1996 certainly was a busy year at PrairieView Golf Course. In the early part of March, capital achievements began with bunker improvements. Twenty thousand tons of new sand were added and levelled in all golf course bunkers. Throughout the months of April to July, the capital crew cored and graveled 7,000 feet of new cart paths, an enlarged cart parking area, and a parking lot and approach to the Lion's Club handicap accessible fishing pier. Throughout the latter part of the summer, the capital crew filled in and seeded around the newly graveled cart path culverts.

Upon the arrival of the summer crew, work began on re-edging all sand bunkers on the course. The crew also cut new ditches along both sides of the cart path on 5 fairway to improve drainage. After a contractor installed new drain lines in the driving range and the green approach to 15 fairway, the golf maintenance crew sodded the 15 fairway drain lines.

Fall found the crew improving the course's finishing hole, 18 green, with a new landscape look. New moguls were built around the back of the green, then seeded. Approximately one dozen large spruce and fir trees were planted at the back and sides of 18 green. Another planting of three mature Sargent Crabapples was established on a mogul between 18 green and 1 tee. Before the cold weather set in, several hundred tulip and daffodil bulbs were planted under the crabapples and then a heavy layer of mulch was added to help protect the new transplants and bulbs. This area will receive more attention in 1997.

Three beautiful Lindens were transplanted to 10 tee. The landscaping also included building a stone wall where a variety of perennials will be added next spring. Several hundred bulbs were also planted and mulched.

Late fall also saw the crew sodding cart path embankments on 9 green and 10 tee. Our plans for 1997 also promise to keep the PrairieView crew busy. Jim Spear, PrairieView's architect, has redesigned several forward tees, 12, 11, 15, 6, 7, and 2, which will be rebuilt during the growing season.

Landscaping will continue with the planting of perennials at 10 tee and behind 18 green. Trees will be planted behind 8 green to give a backdrop to golfers teeing from 8 tee as well as to protect golfers on 8 green. Another area to receive a new look with tree transplantings will be the right side of 15 fairway near the area of 2 green. This will enhance the pond area and give protection to the golfers on 2 green.

Work will continue on the driving range, with the installation of a range ball dispenser and some vending machines surrounded by a protective building.

Continued work towards Audubon Cooperative Sanctuary Certification will be in full swing as the weather warms up. More prairie grasses will be plugged between 7 and 11 fairways and behind 9 green. Improving the landscape of the front door and the planter areas at the clubhouse will also be targeted. Several landscapes will be developed for the golf course entrance. All of the landscapes will be planned with the idea of attracting appropriate wildlife and be pleasing to the eye.

1997 Golf Fees

	Weekends & Holidays 9 / 18 holes	Weekday Mon.-Fri. 9 / 18 holes
Daily Green Fee:	\$15 / \$25	\$13 / \$20
County*	13 / 21	11 / 17
Resident*	11 / 18	9 / 14
Senior**		
Daily	--	\$10 / \$15
County*	--	8 / 12
Resident*	--	6 / 10
Junior**		
Daily	\$10 / \$12	\$10
County*	8 / 10	8
Resident*	6 / 8	6
2 PM Special		
Daily	\$14 / \$22	\$12 / \$18
County*	11 / 18	10 / 15
Resident*	9 / 15	8 / 12
4 PM Twilight		
Daily	\$12	\$12
County*	10	10
Resident*	8	8
5:30 Twilight		
Daily	\$10	\$10
County*	8	8
Resident*	6	6

*Ogle County or Byron resident rates with resident I.D. cards only.
**Senior/junior rates: before 3 pm weekdays and junior rates after 3 pm weekends/holidays. Seniors 60 & over and juniors 18 & under by 10-31-97.

Please help...

Adult and Junior Golfers Welcome

Junior Golf Fundraiser Committee needs volunteers!
Call Ken Ledene to volunteer - 815-234-GOLF (4653)

Organizational meeting to be scheduled in March

Season Golf Passes*

By 3-25-97 / After 3-25-97

Resident - Single	
Adult	\$350 / \$395
Senior	\$225 / \$250
Junior	\$60 / \$75
College Student	\$125 / \$140
Resident - Couple/Family	
Adult	\$555 / \$595
Senior	\$360 / \$395
Out of District - Single	
Adult	\$470 / \$515
Senior	\$295 / \$325
Junior	\$90 / \$110
College Student	\$165 / \$195
Out of District - Couple/Family	
Adult	\$695 / \$725
Senior	\$495 / \$525

Cart Fees

	Wknd/Hol. 9 / 18 holes	Weekday 9 / 18 holes
Daily Cart Fee:	\$16 / \$24	\$14 / \$20
Senior/Single*	12 / 16	10 / 14
Twilight**	10	10

*Single/Senior - Some restrictions apply to single rate during peak hours. Senior cart rate available during senior playing hours only.

**Twilight - after 5:30 PM Mon. - Sun.

For tee times,
call 234-GOLF

* Restrictions may apply to certain pass categories.

New 1997

"Coupon Book" on Sale!

Look for PrairieView's brand new savings "Coupon Book" on sale at the PrairieView clubhouse this spring and summer!

Golfers will find pages and pages of season-long coupons for selected savings of up to 50% off on green fees, carts, range balls, lessons, club regripping, concession items, and much more. Our new coupon books will also make excellent gifts for special occasions such as birthdays, Mother's Day, Father's Day, and more.

Stop by before March 25 to renew your photo ID, season pass, or gift certificates and receive a special coupon book bonus!

Ranger Program Restored for '97

Regular, effective golf course rangers, most knowledgeable golfers would agree, provide an important service effecting the enjoyment of their golfing experience. Unfortunately, due to the local tax reassessment rulings last season, nearly all 1996 salaried golf course ranger positions were eliminated due to the budget reductions.

The PrairieView staff would like to again thank those who joined the volunteer program instituted last season to help fill the void. While the volunteer program worked well at times, scheduling consistent ranger coverage became increasingly difficult by mid-season and beyond.

PrairieView golfers will be happy to know the news concerning golf course rangers is better for next season! The 1997 district budget fully restores and actually increases the number of paid staff performing course ranger/outside 1st tee starters duties. In addition, the volunteer program will continue as a valuable supplement to the regular, salaried rangers. The volunteer program will continue to offer golf and cart benefits in exchange for ranger services.

PrairieView realizes how important an effective ranger program is to both golfers and the golf course alike. If you would like more information about the entire ranger program, please call Ken Ledene at 234-GOLF (4653).



Passes, Cards, and ID's

District residents and others are reminded that PrairieView Golf Course will begin sales and renewals for all passes, discount cards, and "VIP" vouchers, including photo ID's, during special hours in March.

Please bring along your old photo ID card as we will be able to reissue the same card and number in many instances. Individuals who purchased gift certificates during the special before December 20, 1996, must redeem their gift certificate by March 25, 1997, in order to qualify for the reduced rate.

Early season clubhouse hours will be during the weeks of March 10-15 and March 17-22 on Mondays, Wednesdays, Fridays, and Saturdays from 10 am - 4:30 pm each day.

Regular clubhouse operating hours will resume on Monday, March 24 at 8 am - dusk on weekdays and 7 am - dusk on weekends.

Official opening day will be (weather permitting) Wednesday, March 26.

In order to better serve our residents and other patrons, if you plan on purchasing or renewing any type of pass and have not done so by March 25, the clubhouse staff asks you to please stop by in early April during the less busy weekday hours or weekend afternoons if at all possible.

Golf Club at PrairieView Plans 1997 Activities

The "Golf Club at PrairieView" golf association's plans for their 1997 golf events are nearing completion. The district and golf course staff again appreciate our golf association's enthusiastic support and volunteer efforts in promoting and developing our outstanding PrairieView golf facility.

Golf club members from last season will be receiving the club's spring newsletter by mail soon. Additional copies, schedules of events, and other association information are available at the clubhouse, for those not currently a member and are interested in joining.

Spring Golf Lessons

Most individuals take golf lessons because they want to improve their golfing skills and prevent bad habits before they begin. A good idea for both beginners and experienced golfers is to schedule at least one early season golf lesson!

Normally, weather conditions allow reasonably comfortable outdoor lessons in late April or early May. In order to progress during the learning stages, one must be educated in the basic fundamentals. This can be accomplished in either private or group lessons. A four-lesson beginner group series will begin on Tuesday, May 20. Call the clubhouse at 234-4653 beginning in March to register for group lessons or to inquire about private lessons.

Comprehension of basic golf fundamentals, along with regular practice and repetition, provides a solid foundation for developing a good golf swing. Regular practice sessions then become more productive rather than frustrating, and the game of golf becomes much more enjoyable.

New Look on Practice Tee

PrairieView expects to purchase another automated, range ball dispensing machine after electrical problems are resolved near the practice range tee area. Current plans call for completion of an enclosure for both vending machines and a new range ball dispensing machine.

Another major improvement will be the replacement of all the existing synthetic turf mats with a much more natural artificial turf that may even appeal to the serious golfer. Many of these new mats can simulate "close" bent fairway type lies without damaging a club. Also, remember range ball discounts of up to 50% are available by purchasing either a range discount card or a new 1997 "VIP" voucher card! Complete information on these special savings programs are available at the clubhouse.

Think Spring!!

PrairieView Golf Course Spring Special!



\$6 OFF WEEKDAYS / \$8 OFF WEEKENDS

ON ANY 18-HOLE MOTORIZED CART RENTAL

Per cart discount off regular daily cart prices. Only valid before 5:30 pm.
Good thru May 22, 1997. Not good with any other coupon, promo or discounted rate.

febnews

Think Spring!!

PrairieView Golf Course Spring Special!



\$6 OFF WEEKDAYS / \$8 OFF WEEKENDS

ON ANY 18-HOLE MOTORIZED CART RENTAL

Per cart discount off regular daily cart prices. Only valid before 5:30 pm.
Good thru May 22, 1997. Not good with any other coupon, promo or discounted rate.

febnews

1997 "VIP"
Voucher Program

Most everyone is now aware of the new bank "check cards" available locally only as recently as late summer of last year. There was a notable increase in their usage at PrairieView towards the end of last season.

Guess what? PrairieView first offered its own debit type card back at the beginning of the 1995 golf season. And the good news for 1997 is that the third and newest edition of our card is even better than before!

Called the "VIP" voucher card, PrairieView's own debit card offers not only great convenience in making practically any PrairieView golf purchase, but cardholders earn huge savings not available when making purchases with other debit cards! Green fee discounts up to 20%, motorized cart discounts up to 30%, and range ball discounts up to 50% are all available on the new '97 card (see table below).

New for '97 is an extra 10% savings over previous discounts on motorized carts, good for any daily rental. Buy your "VIP" card by March 25 and PrairieView offers up to \$30 in free golf benefits to early purchasers (5% discount off original purchase price). Each new PrairieView "VIP" card provides you with daily savings for up to two full golf seasons.

1997 "VIP" Voucher Prices

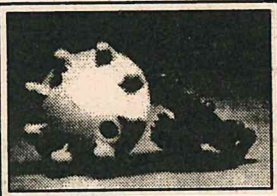
Plan Level Number	Selected \$ Voucher Purchase Price	Green Fee Discount	Cart Discount	Range Ball Discount	Early Bird Purchase Price by 3-25-97
1	\$100	0%	0%	40%	\$95
2	\$200	5%	15%	50%	\$190
3	\$300	10%	20%	50%	\$285
4	\$450	15%	25%	50%	\$427.50
5	\$600	20%	30%	50%	\$570

1997 PrairieView Golf Events

- Spring Ultimate - 27 holes, Saturday, May 3
- New Ogle County Amateur - 18 holes, Sunday June 8 (tentative)
- Summer Junior Golf Program - begins Tuesday, June 10 (Session I)
- New Ladies Summer Golf League - begins Tuesday, June 10
- New Couples Twilight League & Dinner - nine hole league, begins Sunday, May 4-September 28
- Men's Lincoln Highway Qualifying - Sat/Sun, June 21 & 22
- Second Annual PrairieView Junior Fundraiser Event - 18 hole shotgun start, Sunday, June 29
- Second Annual Ogle County Junior - Monday, August 4
- Golf Club at PrairieView Championship - Sat/Sun, August 9 & 10
- Gold Medal Classic - 36 holes, Sat/Sun, September 6 & 7
- Fall Ultimate - 27 holes, Sat, September 20

Watch for more information in upcoming newsletters on a planned new "Family Night" golf event(s) for the entire family. Anyone with suggestions or who would like to get involved in this event, please call or see Ken or Karla at the clubhouse.

"Are Metal Spikes
Soon to Be Obsolete?"



PrairieView golfers, are those metal spikes in your golf shoes about to go the way of hickory shafts? There are strong indications those little metal nails protruding from the soles of

your shoes may soon be obsolete.

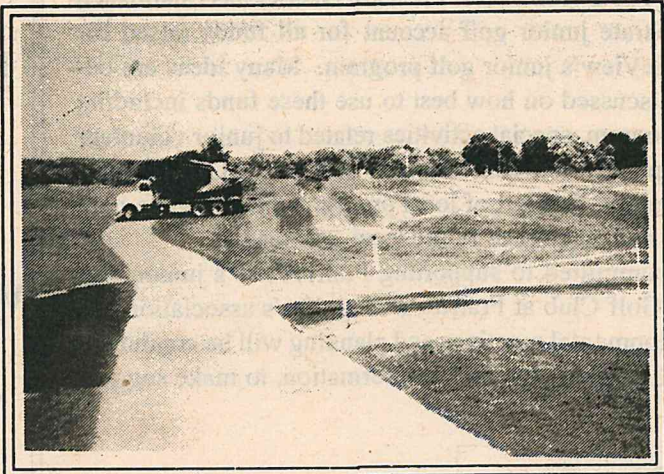
More and more data is available every day to indicate golfers are switching to the new non-metal alternatives and loving it. The movement really began a few years ago with a small number of private clubs banning metal spikes entirely. The immediate reward was much improved green conditions with no adverse affect on golfer's footing. In addition, player's who began wearing the new plastic spikes immediately noticed how much more comfortable they were than metal spikes.

One of the first clubs to ban metal spikes was Jack Nicklaus' Muirfield Village in 1994. Recent reports indicate more than 600 clubs and courses in North America now ban metal spikes. At this time, many of these courses are typically private clubs due to the fact most of their rounds are by only 250 - 300 member golfers. The more recent push is to bring non-metal cleats to public golf facilities such as PrairieView which constitute 75% - 80% of all golf rounds played nationally.

PrairieView will not be banning metal spikes in 1997, but our facility will consider doing so in the future as non-metal spikes become more popular among public course players.

In the meantime, our golf staff strongly encourages everyone to switch to the new non-metal spikes. PrairieView's golf shop currently stocks the "SOFTSPIKES" brand cleats" brand in two styles to fit practically any shoe. Due to a special one time "SOFTSPIKES" promotion and a minimal markup by PrairieView, a complete set sells for only \$2. This is more than 50% off the regular price for a set of steel spikes or plastic "SOFTSPIKES".

Well over 50% of the Men's Senior PGA Tour players are now wearing non-metal cleats without being paid to do so and are still winning major events. Once you try the new, non-metal spikes, feel the difference in comfort, and then see the dramatic improvement in putting green conditions, you will be convinced of their many benefits. The next step then will be to get your golfing friends to try them.



Above - Several tree plantings were done in '96 to enhance the course and protect golfers. All of the landscapes will be planned with the idea of attracting appropriate wildlife and be pleasing to the eye.

Left - Wendell Webb of Rockford won the '96 Gold Medal Classic Golf Tournament which included a \$500 gift certificate.



New Ladies' Golf Leagues Set to Begin!



Mark your calendar for Tuesday, May 13, and plan to attend a general information and introduction meeting to initiate PrairieView's new Ladies' golf league/activities for the 1997 season. Ken Ledene, Golf Professional/Manager, will attend to provide information, answer questions, and conduct a casual outdoor golf clinic.

All program activities this day are compliments of PrairieView.

PrairieView welcomes lady golfers of any experience level (especially those interested in learning to play golf) to attend this important first informal get together. Some topics of discussion will include the following: availability of Tuesday child care services, type of weekly golf activities, and additional fall events. Golf clubs will be provided for those who need them this day.

Assistant clubhouse manager, Karla Coy, with the help of Ken Ledene will be coordinating the new ladies golf activities for the entire 1997 golf season. Karla, a beginner golfer herself, also plans to join in and play in most of the ladies golf activities.

Plans call for scheduling regular Tuesday morning golf play and activities starting on Tuesday, June 10, at 9 am. The style of play in this league will be very casual and relaxed, especially for the beginners. There is no obligation to come every week or to play a complete nine holes. For more information, call 815-234-GOLF (4653).

Ladies' League Activities

Monday, May 5 - Seniors Women's 50 & over Tournament ... 18 holes/ 9:30 shotgun/ open to all PrairieView lady golfers.

Friday, May 9 - last day to sign-up for Ladies League Kick-Off Meeting - call 815-234-GOLF (4653) to register.

Tuesday, May 13 - New Ladies League/Activities Kick-Off Meeting (all activities complimentary)

9:00 am - Coffee & Rolls

9:15 am - General meeting and discussion

10:15 am - 11:15 - Group golf clinic

Tuesday, May 20 & 27, June 3 - 10:30 am - 11:30 - Ladies Beginner/Introductory Golf Clinic (\$15 - all 3 sessions)

Tuesday, June 10 - Regular Weekly Summer Golf Activities Begin

8:45 am - all players register

9:00 am - 1st tee off

11:00 - 11:30 - optional lunch



Junior Golf Gets Big Boost



PrairieView's staff is busy this off season working on plans and ideas to further develop and expand our growing junior golf program. Last year's First Annual Junior Fundraiser raised \$4,773 to be used to develop future junior golf programs and events at PrairieView and in the local area. The tournament fundraiser will now be an annual event, so make plans to sign up to play in this year's 18-hole event on Sunday, June 29.

The Byron Forest Preserve District has established a separate junior golf account for all funds raised for PrairieView's junior golf program. Many ideas are being discussed on how best to use these funds including

the following: further growth of the current instruction program, special activities related to junior volunteer support of an expanded divot sand/seed program, and expanded tournaments such as the new Ogle County Junior Tournament. Other ideas include scholarship programs, support of local programs like the bike path expansion to make it safer and easier to get to the course, and support of future local golf teams.

Any parent, adult, or junior golfer interested and committed to supporting PrairieView's junior golf development are encouraged to become involved. The "Golf Club at PrairieView" golfer's association has been and will be a strong supporter in these efforts. Developmental meetings and planning will be conducted in the coming months. Call Ken Ledene at 815-234-GOLF (4653) for further information, to make suggestions, or to help out.

Volunteers Needed!

All ages, interests, shapes, and sizes! All are welcome to assist with prairie restoration, observatory, harvesting seeds, gift shop operation, answering phones, greeting visitors, maple syrup making, Ranger Rick program, junior golf tournament, filling divots, woodworking, beekeeping, and much more! Call Barb at 815-234-8535 to sign up.

Jarrett Prairie Center

*** NEW ***

Public Hours

Sunday - 1 - 4 pm

Monday - 8:30 am-4:30 pm

Tuesday - 8:30 am-8 pm

Wednesday - 8:30 am-4:30 pm

Thursday - 8:30 am - 8 pm

Friday - 8:30 am - 4:30 pm

Saturday - 9 am - 4 pm