

Byron Panorama

A Publication of the Byron Governmental Agencies



Miracle on Second Street

Friday November 14

- ◆ Christmas Tree Lighting
- ◆ Special Tree Display & Drawing Registration - Lucius Read House*
- ◆ Live Store Mannequins
- ◆ Carolers
- ◆ Carriage Rides (6:30 - 8:30 PM) sponsored by Stillman BancCorp
- ◆ Cake Walk
- ◆ Face Painting
- ◆ Open Stores & Refreshments

Saturday, November 15

- ◆ Annual Craft Show - Forest Preserve (Until 4 PM)
- ◆ Shuttle Bus Rides between Downtown & Forest Preserve
- ◆ Carolers
- ◆ Live Mannequins (11AM - 2 PM)
- ◆ Special Tree Display & Drawing Registration
- ◆ Open Stores & Refreshments
- ◆ Free Carriage Rides (1 - 3 PM)

Sunday, November 16

- ◆ Open Stores & Refreshments
- ◆ Special Tree Drawing Awarded (2 PM)
- ◆ Christmas Tree Display & Drawing Registration - Lucius Read House*

Winter, 1997

Decorated Christmas Tree Drawing

* There will be Christmas trees on display in the Lucius Read House. Service organizations in Byron have been invited to decorate a tree and display it as a way to showcase their organizations. One tree will be decorated by Byron businesses for the raffle. To enter, use the raffle coupon. The coupon must have been validated by two retailers, one financial institution and one restaurant/bar. Upon completing the coupon, drop it off in any business collection box to register to win the Christmas tree. The drawing will be on Sunday at 2PM.



Sherry Jennings Retires From Chamber

It is hard to believe for all of us that work with Sherry Jennings that she is retiring as Chamber of Commerce Director, since 1991. As Director, Sherry was involved in all aspects of the community. The Success of ByronFest ultimately landed on Sherry's shoulders, even though she had the support and help of many volunteers every year. For many years Sherry planned the Christmas Walk, the Murder Mystery Dinner Theatre and the annual Golf Playday, as well as the Chamber's Annual Dinner where businesses and individuals in Byron were honored for their contributions. She organized a monthly first Tuesday meeting where business people could meet and share ideas and hear monthly speakers.

When the United States Canoe Association called one day to ask Sherry for help in putting on a major event for the Guinness Book of World Records, Sherry, without hesitation, agreed to help them. She immediately got a committee of business leaders together, along with the city, and proceeded on a plan to beat the world record of 582 canoes and kayaks together in a single, free-floating raft at one time. We did manage to beat the record with 649 canoes but, unfortunately, Sherry didn't get to see it because she came down with pneumonia the day before the event!



New Chamber Executive Director Beth Clift, Director Ernie Leombruni, Director Pat Dach, Director Mike Kohlstedt, President Chuck Martin, Executive Director Sherry Jennings, Director Bill Craig, Mayor Kathy Hlmas, Director Matt Bortoli, Past President Scott Jeffrey.

Sherry served as a liaison many times to promote good will between the businesses in Byron and the City. This relationship has continued to grow in a positive way over the years due to Sherry's efforts. Sherry also organized a monthly roundtable meeting between the Chamber, the taxing district directors in Byron (school, library, museum, forest preserve, fire dept.), the City of Byron, the Byron Police Department, the Byron Township, and the Byron Park District. The purpose of these roundtable discussions was to open up the lines of communication between these groups and to share ideas and concerns. Numerous intergovernmental agreements, as well as these quarterly issues of the Panorama, were initiated at these meetings which first started in April, 1995, and are still continuing today with much success.

Along with her numerous duties and accomplishments as Chamber Director, Sherry volunteers her time in community groups as well. She served at Lt. Governor



Pictures - left to right Baby Ben Bader, Stacey Jennings Bader, Shannon Bader, Ron Bader, Sherry Jennings, Hilary Jennings, Steve Jennings, Alissa Jennings, Evan Jennings, Jim Jennings and Jamie Jennings.

of Kiwanis for one year and is very active in the local chapter. She also devotes considerable time to Key Club and serves on the Byron Museum District Board of Commissioners. Even though she

Inside this issue . . .

Byron Chamber of Commerce	1
Museum	2, 3
Public Library	4, 5
Park District	6-9
Forest Preserve	10-17
School District	18-23
Fire Protection District	24
Byron Township	24



Byron Forest Preserve News

7993 North River Road, Byron (815) 234-8535

Preservation • Education • Recreation



Second Saturday Kids Concerts

The Byron Forest Preserve will begin a Second Saturday Concert series using performing arts to delight the young with music, comedy, animals, storytelling, and puppets. The concerts will be FREE and FUN! The spectacular area businesses will sponsor the concerts for the kids so they are FREE to the public. There will be a concession stand selling juice and popcorn for .50 each and performers will have tapes available for purchase.

December 13 - Wildlife, Inc. - Sponsored by Cacciatore's Byron Food Mart

Four animals will be brought to explain the habitat and eating habits, and to entertain and delight the children. Photos will be available upon request for a \$5 fee.

January 10 - Mr. Steve - Sponsorship available.

Original songs, humor, magic, and balloon art with Steve Lindquist. Little ones will shout along, sing along, and play along with a local favorite, Mr. Steve.

February 14 - Marilyn Price Puppets - Sponsored by Byron Bank.

Laughter, fun, understanding, creative energy, joy, self-esteem...stories communicate values and create meaningful morals. They're different and fun. Puppetry gives audiences a reason to listen and an invitation to be a part of the show.

March 14 - Michael Offutt's Science Safari for Kids - Sponsorship available.

This fast-paced 45-minute demonstration is guaranteed to be fun, educational, and memorable for all who participate.

Second Saturday Concerts

The Byron Forest Preserve along with Backpack Concerts will continue the Second Saturday Concert series with Andrew Calhoun. He is scheduled to perform on December 13 at the Jarrett Prairie Center at 8 pm. The tickets cost \$8 each.

Chicago singer-songwriter Andrew Calhoun has been performing professionally since 1978. His songwriting is fearless and visionary, his delivery direct and passionate.

Calhoun's songs are a blend of stark, vivid imagery and lush, traditional sounding melodies that present the unadorned truth while digging deep for the best in humankind. Calhoun's droll stage manner, mesmerizing baritone, and fluid fingerstyle guitar playing always make for a memorable performance, whether solo or with partner, Kat Eggleston. Calhoun always includes a Scottish ballad or two in his sets.

"Calhoun is a master at story songs...Like the best novelists, he is able to assume different personas and see the world through other people's eyes." - June Sawyers, *Chicago Tribune*

The next performers will be announced at a later date.

The Jarrett Prairie Center is located at 7993 North River Road in Byron. For tickets or more information, please call 815-234-8535.

Preschool Has Openings

Get ready for kindergarten...since the Nature Preschool classes are so popular at the Byron Forest Preserve, the Forest Preserve has begun a two-day preschool program.

The classes offer a unique combination of preschool readiness material and learning activities that use nature explorations as a springboard for learning and growing. The material is designed to focus on the basic concepts appropriate to a young child's development and ability. The concepts include color recognition, sequencing, body awareness, reading readiness, and other important skills developed through hours of learning fun. Every child should dress for the weather. Children are considered enrolled for the entire length of the respective session upon registration. Class size: 12 students maximum.

Teachers: Barb Wingert and Hazel Stein.

Choice of classes:

Monday/Wednesday - 9-11 am - Tuesday/Thursday - 9-11 am - Tuesday/Thursday - 1-3 pm

Winter session: 12 weeks (January 12-March 30) \$150 Fee

Spring session: 8 weeks (April 6-May 25) \$100 Fee

Payment options for Winter classes:

1) Paid in full at registration \$135 (discount)

2) Easy payment plan of three equal payments of \$50. First payment due at registration. Second and third payments due the first of the month. Payments may be made by cash, check, or Visa/Mastercard. Pre-registration required. Please call (815) 234-8535 for more information.

Craft Show

This year, the Byron Forest Preserve and the Byron Chamber of Commerce are working together to make *Miracle on Second Street* a wonderful holiday weekend for the entire family.

Miracle on Second Street begins Friday, November 14, at 6 pm with the Christmas tree lighting at B.J. Way Park. Special events will continue until Sunday, November 16, with the Christmas tree drawing at 2 pm at the Lucius Read Home.

Shop early and bring a friend to the Forest Preserve's Sixth Annual Holiday Craft Show which will be held from 9 am - 4 pm on Saturday, November 15, at the Jarrett Prairie Center, 7993 North River Road in Byron.

The craft show offers over 35 exhibitors with a wide variety of unique crafts (for that hard-to-buy-for person or the person who has everything). The concession stand will be open all day.

Then you can take a ride on the free shuttle bus from the Jarrett Prairie Center to the downtown Byron area to take part in the *Miracle on Second Street* holiday celebration!

Public Hours

Jarrett Prairie Center & Gift Shop

Sunday - 1 - 4 pm
Monday - 8:30 am - 4:30 pm
Tuesday - 8:30 am - 8 pm
Wednesday - 8:30 am - 4:30 pm
Thursday - 8:30 am - 8 pm
Friday - 8:30 am - 4:30 pm
Saturday - 9 am - 4 pm

Plus...

The prairie preserve will be open for sledding, cross country skiing, and other winter sports.

The Warming House will be open:

Saturday - 9 am - 4 pm
Sunday - 1 - 4 pm
Holidays and "No School" days
10 am - 4 pm



From the Director...

By Edward C. Clift, Executive Director

Greetings! This has been an interesting few months with the renovation work on our Natural History Museum at the Jarrett Prairie Center. On October 26th, we opened this outstanding new museum with over 75 people present for the official ribbon cutting ceremony. This development was accomplished totally by our staff and local volunteers. I would like to thank and recognize some of the people that helped with this project:

Lisa Johnson, Design Creator/Project Chair
Barb Wingert, Museum Committee Member
Jim Hess, Taxidermist Volunteer
Laurie Conner, Museum Committee Member
Chris Hall, Woodland Backdrop Artist
Chris Bronny, Prairie Backdrop Artist
Forest Preserve Volunteers
Forest Preserve Maintenance Department
Forest Preserve Education Department
Forest Preserve Administrative Services Dept.

This has been a very time consuming venture for all of these contributors, and I would like to thank them and their families for the support over the past six months. These exhibits offer some of the best educational opportunities anywhere in the State of Illinois, and we hope you will take advantage of this treasure here in Byron.

I also would like to welcome Lori Diehl, our new volunteer coordinator. As Lori says, "we need you", as part of our large volunteer program so we can ac-

complish our goals and mission here at the Forest Preserve. Whatever your talents, see if any of the following interest you! This is a great way to become involved and give something back to the community:

Museum Operations
Gift Shop Operations
Prairie Restoration
Observatory Programs
Nature Preschool
Earthkeepers Programs
Ranger Rick Programs
Woodworking in Woodshop
Harvesting Prairie Seeds
Chaperoning Children's Events
Maple Syrup Making
Beekeeping
Maintenance Operations
Golf Course Operations
School Field Trip Assistance
Tuesday Group 8:30-11:30 am.

For more information about our volunteer program, please call Lori at 234-8535 ext. 203.

This has been a very exciting summer with record participation at the Jarrett Prairie Center, Weiskopf Observatory, Prairie, Education Programs, and Golf Course. I hope that you will take the time to review the activities that are in this "Panorama" in which you and your family may participate. Please visit us at the Forest Preserve and take advantage of all the marvelous opportunities right here in your back yard.

Positive Ideas

TEAMWORK

It is a fact that in the right formation, the lifting power of many wings can achieve twice the distance of any bird flying alone.

• *Successories - Ideas for Positive People*

CHANGE

A bend in the road is not the end of the road unless you fail to make the turn.

• *Successories - Ideas for Positive People*

DIVERSITY...

is the one true thing we all have in common...celebrate it every day!

• *Successories - Ideas for Positive People*

RISK

You cannot discover new oceans unless you have the courage to lose sight of the shore.

• *Successories - Ideas for Positive People*

Museum Metamorphosis - Phase III

The time is spring and new growth is just beginning in the prairies and oak savannas of northern Illinois. Buffalo calves and deer fawns are being born. Spring wildflowers and new young green leaves are appearing. Hawks, owls, foxes and coyotes search for food to feed their growing youngsters as the browsers nibble on the new tender growth. This is the setting for the new prairie and woodland habitat displays at the Jarrett Prairie Center. These two displays have been completed and the wetland display is well on its way. Already, these exhibits have proven to be a favorite with school field trips and group tours. They have helped us to show people what this area was like before the settlers arrived here.

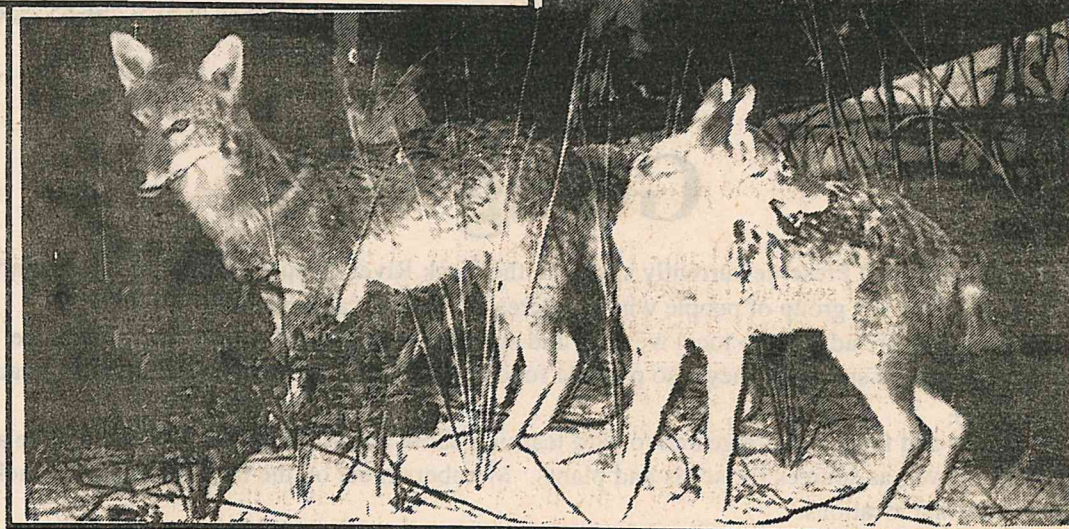
Look for new exhibits to come on subjects such as fossils, feathers, shells and more as well as traveling exhibits and nature artists. Some aspects of the exhibits will change on a monthly or bi-monthly schedule as new material is prepared. Look also for more hands-on and child friendly exhibits.

Old friends and new friends, come and visit the Jarrett Prairie Center at the Byron Forest Preserve to see what we're up to.

The Jarrett Prairie Center is open from 8:30 am-4:30 pm, Monday through Friday with extended hours until 8 pm on Tuesday and Thursday, as well as 9 am-4 pm on Saturday and 1-4 pm on Sunday.



Volunteers Make It Happen! - (Left) Volunteer Taxidermist Jim Hess puts the finishing touches on a red tailed hawk at the Jarrett Prairie Center Museum. (Below) A few coyotes lurk in their natural setting in the museum.



Star Notes

Jupiter



Winter is coming and it brings cold, clear nights perfect for star viewing. The Pleides and Taurus the Bull are already visible in the November skies. The constellations, Pegasus and Andromeda are high, giving good views of the Andromeda Galaxy. The bright stars forming the Summer Triangle, Altair, Deneb and Vega, are dropping into the west now while Jupiter and Saturn are high in the south. Perseus, Cassiopia and Auriga all hold interesting stars and star clusters.

Looking ahead to December and January, the winter constellations take the stage. Orion and Gemini will rise in the east, starting a little higher each night. Orion brings the great Orion Nebula. Visible through binoculars, it's a real treat in the telescope. Gemini and Auriga hold a string of interesting star clusters. Saturn will remain high in the sky for excellent viewing while Jupiter will quickly sink into the west. Winter also brings us the brightest star visible from Earth. Sirius, the dog star, is a part of the constellation, Canis Major. Canis Major is Orion's faithful hunting dog, following at his heels for all eternity.

February brings us the return of Cancer and Leo. The Crab and The Lion are the harbingers of spring to come as the stars proceed in their celestial dance of seasons. Join us on a Public Viewing night as we explore the wonders of the night sky.

Public Viewing nights are on the first and third Saturdays and second and fourth Tuesdays of each month. The Observatory is closed if it is cloudy, please call (815)-234-8535 to confirm viewing conditions. Sessions start about dusk and last until about 10 pm and are free. Please dress for the weather as the dome is not heated.

The Weiskopf Observatory is also available for private tours. The program includes fun and interesting activities relating to constellations, the Solar system, stars and star movements, telescopes and constellation myths. The cost is \$2 per person and tours can be arranged by calling Lisa at 815-234-8535, ext. 232.

Earthkeepers: "Best Field Trip"

Earthkeepers is the "best field trip" according to kids.

School students know this program is the best because it is designed to pull the learners into the learning experience. They enjoy the learning process because it is fun, concrete, and meaningful.

This autumn, students from Rochelle are enjoying the process of becoming an "Earthkeeper" at the Byron Forest Preserve. This winter, Mt. Morris and Oregon students will also participate in this adventure-some learning experience. Students discover the four keys to living in harmony with nature. They learn how the earth works (that energy flows in food chains; that air, water, and soil materials are constantly recycled; that all living and non-living things are connected, and that living things are always changing to get and use energy and materials in better ways). Students also spend time deepening their feelings for the earth during times of solitude, discovery parties, and sensory walks.

When they leave the three-day experience at the Forest Preserve, they pledge to work on: lessening their impact on the Earth by using less energy and materials, deepening their feelings, and sharing what they have learned with others.

We would like to thank members of the community who volunteer at the Forest Preserve and help put the teaching props together. We also thank the Fire Department for making pin buttons for the Earthkeepers program. Thanks also to Barker Lumber for preparing several hundred tree branch disks for name tags.

Volunteers are welcome to help with running the program, which includes anything from maintaining, organizing, and setting up teaching props, to running an activity.

If you would like more information about Earthkeepers, please call Susan at 815-234-8535, ext. 202.

Going Wild

The Byron Forest Preserve currently sponsors the Rock River Chapter of the Wild Ones Natural Landscaping Club. This is a group of people who is interested in landscaping with native plants.

Native plants are adapted to local weather and soil conditions and require less maintenance, chemicals and water than exotic species. They also provide food and habitat for wildlife, such as many beautiful birds and butterflies.

Programs and field trips are geared toward learning about native plants, what they look like and how to grow them, as well as sources for seeds and plants. Members meet on the third Thursday of each month at varying times and locations.

If you are interested, please call Lisa at 815-234-8535 ext. 232.

Cookie Bouquets

You can come and make a beautiful Thanksgiving Cookie Bouquet.

The class will be held at the Jarrett Prairie Center on November 24, 1997, 6-9 pm. The cost is \$16.

Pre-registration is required. Class size is limited. To register for this class, call 815-234-8535.

Chocolate Trinket Boxes

You can come and make a fancy little chocolate trinket box, complete with flowers, ribbons, and "glitz" (all edible). These decorative boxes make special gifts, nice presentation containers for small gifts or simply make them for fun.

All supplies are furnished, including tools you can keep for making additional boxes. Bring a sturdy container to class for your chocolate box.

The class will be held at the Jarrett Prairie Center on December 9, 1997, 6-9 pm. The cost is \$16.

Pre-registration is required. Class size is limited. To register for this class, call 815-234-8535.

Stepping Out

The Prairie Preserve presents an ever-changing palette of life and color. Join us for an opportunity to experience the great outdoors.

There will not be Bird and Wildflower Walks in December and January. The walk for February will be announced at a later date.

Warm clothes, comfortable walking shoes/boots, and binoculars are recommended. Call (815) 234-8535 to register.

Snowmobile Safety

A basic snowmobile safety class will be held from 8 am to 4 pm on Saturday, December 20, at the Jarrett Prairie Center.

The all-day session is designed to qualify participants to be certified to operate a snowmobile. Certification is required for anyone ages 12-16 and any adult without a driver's license.

Anyone attending the class should bring a sack lunch. The class is free. The class is limited to 25 so advance registration is required no later than Thursday, December 11, 1997.

To register or for more information, call 815-234-8535. The Jarrett Prairie Center is located at 7993 North River Road in Byron.

Volunteer News...

Volunteer Coordinator

The Byron Forest Preserve District has hired a new volunteer coordinator, Lori Diehl. It has been an exciting adventure to begin her work. She has enjoyed making new friends with the staff and volunteers. The volunteer group who meets currently at the forest preserve has done so much to assist us. They are appreciated very much!

However, the volunteer program is always seeking new volunteers on a limited or active basis. If you're interested, please call 815-234-8535 ext. 203.

Tuesday Morning Volunteers

The Byron Forest Preserve's Tuesday morning group of volunteers meets weekly from 8:30-11:30 am at the Jarrett Prairie Center. Both men and women are encouraged to attend. At this time, they are getting ready for the Annual Holiday Craft Show and the Lucius Read Home tree exhibit on November 14-16. Many volunteers are designing tree ornaments and crafts. Some volunteers are displaying their craftiness by working in the woodshop making bird houses.

If you're interested in becoming part of our Tuesday morning group, please call Lori at 815-234-8535 ext. 203 for more details or stop in and visit on Tuesday morning at the Jarrett Prairie Center, 7993 North River Road, Byron. Everybody is welcome!

Woodworkers

The Byron Forest Preserve's group of woodworking volunteers is growing rapidly. This group primarily works in the woodshop. The woodshop will be open for those interested in making bird houses and butterfly houses.

The Byron Forest Preserve can always use responsible men and women to help with the woodworking projects. For those interested in helping with these projects, please call Lori at 815-234-8535 ext. 203.

Earthkeepers

The Byron Forest Preserve's Education Department is keeping busy with projects to further their goals for the year. Earthkeeper educator, Susan Kleiman, would like to have a few dedicated adults to assist her with the outdoor activities and education classes offered at the Byron Forest Preserve. For those interested in helping with these types of programs, please call Lori at 815-234-8535 ext. 203.

Observatory

Education Assistant Lisa Johnson is interested in getting some volunteer assistance with her outdoor activities, field trips, museum tours, and/or public viewing nights and observatory tours at the Weiskopf Observatory. For those interested in helping with these types of programs, please call Lori at 815-234-8535 ext. 203.

Prairie Restoration

The Byron Forest Preserve's Naturalist, Todd Tucker, is busy getting the prairie ready for the winter season. Anyone interested in seed collecting, brush clearing, picnic table refurbishing, sign painting, designing bird houses, tree pruning, wood duck monitoring, beekeeping, honey processing, or any other prairie restoration, please call Lori at 815-234-8535 ext. 203. As you can see from the list, it can be overwhelming without the help of dedicated volunteers!

PrairieView G. C.

For those dedicated golf course volunteers, Golf Course Superintendent Steve Storz needs volunteers to plant prairie plugs or starter plants. In addition, the existing prairie plots need maintaining, as well as the fairways.

For those interested in helping on the golf course, please call Lori at 815-234-8535 ext. 203.

Gift Shop

The Byron Forest Preserve's Jarrett Prairie Center Gift Shop Manager Robin Davis is seeking volunteers to help in the gift shop on Tuesday and Thursday evenings or weekends.

For those interested in working in the gift shop and answering phones, please call Lori at 815-234-8535 ext. 203.

Old Fashioned Christmas on the Prairie

If you enjoy volunteering at the Byron Forest Preserve or would like to begin volunteering, you are invited to attend the First Annual Old Fashioned Christmas on the Prairie. Guests will enjoy entertainment from our very own volunteers, staff, and area clubs while sampling wonderful hors d'oeuvres, finger foods, and cookies.

Christmas carols, holiday punch, and wassail will complete the relaxing evening on Saturday, December 6, from 7-9 pm, at the Jarrett Prairie Center in the Prairie View Room.

If you plan to attend, please RSVP by December 3, 815-234-8535 ext. 203.

Cookie Exchange

The Byron Forest Preserve's volunteers or people interested in volunteering are invited to attend the Annual Christmas Cookie Exchange on December 16. Each person is asked to bring three dozen of their favorite homemade Christmas cookies to the weekly Tuesday morning group which is from 8:30-11:30 am.

For more details, please call Lori at 815-234-8535 ext. 203.

Jr. Ranger Rick

Junior Ranger Rick Club is for boys and girls ages from kindergarten through second grade. Activities include exploring the wonders of nature through hands-on discovering. Field trips and participation in various environmental projects will be a part of the program.

Beginning in November, Jr. Ranger Rick will meet on the first and third Wednesday of every month from 3:30-5:30 pm.

Children attending Byron schools may ride the bus from school to the Jarrett Prairie Center.

The cost is \$12 per month. You may register your child by the month. Barb Wingert will be the advisor. Pre-registration is required. To register, call 815-234-8535, ext. 200.

Sr. Ranger Rick

Senior Ranger Rick Club is for boys and girls ages from third grade through fifth grade. Activities include exploring the natural Earth by discovering its impact on our lives through hands-on experiences. Join your friends and explore with us!

Beginning in November, Sr. Ranger Rick will meet on the second and fourth Wednesday of every month from 3:30-5:30 pm.

Children attending Byron schools may ride the bus from school to the Jarrett Prairie Center.

The cost is \$12 per month. You may register your child by the month. Barb Wingert will be the advisor. Pre-registration is required. To register, call 815-234-8535, ext. 200.

Here's a Thought

The Earth never tires, the Earth is rude, silent, incomprehensible at first. Be not discouraged, keep on, there are divine things well enveloped. I swear to you, there are divine things more beautiful than words can tell.

- Walt Whitman

Once in awhile, we come up against the question of "why should we be interested in" and "why do we work on the study and appreciation of wild things."

We might answer ourselves like this, we need to study and preserve it for medical reasons, for scientific reasons, for geological study, for historical reasons, and more, when you cast your eyes on these things, you see, to no surprise, that all things are good for us for economical reasons. Nothing bad about that.

However, there is something beyond: aesthetics. There are beautiful aspects of nature we do not understand. We know they are there but we don't know how they got there. They work perfectly, without us having much of a hand in it. As Buckminster said, "All things are connected."

- By Clyde James, Volunteer

Coyote (*Canis latrans*)

With a yip yip here and a howl howl there, here a yip, there a howl, everywhere...No, actually, just kidding. I know that's not how the song goes, but you may have heard these sounds if you have ever gone for a stroll after the sun goes down. Nowadays, it is not that uncommon to hear a coyote, or several for that matter, yipping, yapping, and howling at the moon. The coyote has become almost commonplace on the farm.

The coyote looks like a medium sized dog. It varies in color from gray to reddish gray, with its legs, feet, and ears being a rusty color and belly being whitish. Its nose is a little more pointed and its tail bushier than normal domesticated dogs. When running, the coyote usually holds its tail between its legs.

Known as the survivor, the coyote lives throughout Illinois and North America, utilizing a variety of habitats. You will find them in brushy country, the edges of woodlands, the hilly country of southern Illinois, wooded bluffs along the Mississippi River, and even here on the prairie. Coyotes are nocturnal for the most part, but have been seen active during the

day. They are true scavengers, eating almost anything they come across. Mice and cottontail rabbits make up most of their diet during the winter, but when available, they will eat vegetables and carrion (dead animals).

Coyotes are blamed for many of the livestock deaths in Illinois. In actuality, there is a large population of feral dogs (wild), more capable of killing larger prey that are probably responsible for the deaths. In Illinois, coyotes usually breed in February and the young are born in April. The gestation period is about two months with the average litter size approximately six. The male will usually bring back food for the mother and her pups. Their dens are usually dug into the ground. Coyotes will breed with wild feral dogs. These hybrids may have a slightly different reproductive cycle than the coyote.

Here on the prairie preserve, the coyotes can often be heard, and on occasion seen, between dusk and midnight. So, the next time you are out on the farm, or just out for a moonlit walk, stop and listen for the howl of the coyote.

- By Eric Thomas, Forest Preserve Staff

Edgar Signs!

Well, the long anticipated wait is finally over. The governor's signature was the final step for the Illinois Nature Preserve expansion at the Byron Forest Preserve District. Governor Jim Edgar made the document official in September.

This land protection will secure 300 acres for future generations at the forest preserve. The signage for the newly expanded areas will be put in this winter and early next spring.

For the most part, the protected land is everything west of the road to the Jarrett Prairie Center, everything south of River Road, and everything east of the property line that is adjacent to the Byron Dragway.

I would like to encourage everyone to take a walk on the trails and enjoy the truly beautiful natural areas that can be found right here in your community. I would also like to remind anyone who may have land that is in good natural condition and has any inclination to see that land protected or has any questions about land protection of any degree to contact me at the Byron Forest Preserve, 815-234-8535 ext. 222.

- By Todd Tucker, Restoration Manager

Wild Turkey (*Meleagris gallopavo*)

Contrary to popular belief, not all turkeys are raised on the farm. Some people may not know that there is such a thing as a wild turkey. In fact, there is a fairly decent population right here in Ogle County. Turkeys prefer open woodlands and forests with nearby clearings. The wild turkey looks and sounds similar to the domestic variety that you may see around Thanksgiving time. However, there are a few differences. Wild turkeys are not quite as dark as the domestic birds and their tail feathers are tipped with a chestnut color instead of white. This color difference makes them not quite as visible when they are strutting through the forest. Wild turkeys are also more slender than the domestic turkey. This is due to the wild turkey's diet. Barnyard turkeys are fed all the grain they can eat in preparation for Thanksgiving day while the wild turkey has to forage through the woods and fields looking for acorns, fruits, and seeds.

Although turkeys can fly for short distances, they are fast runners and usually elude danger by running for cover. At night, they often roost in the tops of trees. This helps keep predators, such as the coyote, from reaching them while they are sleeping. Before people knew much about the turkey, it was thought to

be a dumb and awkward bird. In reality, the turkey is a very intelligent creature and even has better eyesight than an eagle! As a matter of fact, Benjamin Franklin thought the bald eagle was a dirty scavenger (feeding on already dead animals) and suggested that the wild turkey be our national bird. I bet Thanksgiving Day would have been a whole lot happier for the turkey if it were our national bird.

Turkeys lay 10-15 eggs in a nest built on the ground. In the last ten years, the turkey population has grown quite dramatically. In fact, they are doing well enough to become an Illinois state game bird. With a special permit, turkeys can be hunted in the fall and early spring. The big Toms (males) can often be seen in the classic strutting position trying to attract females.

Here at the forest preserve, we have a small population (15-20) that can often be seen in the early morning and occasionally in the afternoon. If you're interested in getting a look at a wild turkey, visit the Jarrett Prairie Center and view the displays, or take a walk along the trails to get a look at a real live wild turkey!

- By Eric Thomas, Forest Preserve Staff

Gift Shop News

The gift shop at the Jarrett Prairie Center has new items arriving daily. There are many gift ideas for children's birthdays, holidays, and any other occasion. Some gift specials are already wrapped!

The Bluebird, Butterfly, Bat, and Ladybug houses are handcrafted by the volunteers at the Jarrett Prairie Center.

A new addition to the gift shop is Robert Shaw's elegant new photography books and calendars on Illinois which explores the wildlife and natural world still existing in our state. The books are priced at \$39.95 and the calendars are \$7.95. These would make great holiday gifts!

Be sure to visit the Jarrett Prairie Center's gift shop for your next special gift need!

Field Trips

The Byron Forest Preserve District Education staff provides one- to four-hour field trips for school age children. We have a variety of activities from which to choose.

Please call (815) 234-8535 to schedule a trip for your class or group.

Here's the Buzz...

The Forest Preserve had a bountiful crop of honey this year from the four beehives on the prairie. An average honey crop is approximately 100 lbs. per hive.

Although most of the honey was not weighed at the time of extraction, judging by the many full bottles, it was an above average year, according to Jeff Ludwig, Forest Preserve employee and volunteer beekeeper. The honey is for sale at the Jarrett Prairie Center Gift Shop for \$2 per bottle.

Fall is still a good time to see much of the prairie in bloom and to watch the bees working the flowers for nectar and pollen. If you haven't been out to see the prairie in awhile, stop by and enjoy the great fall colors.

If you have questions about the bees or want to learn more, call 815-234-8535 ext. 222 and ask for Todd Tucker or Jeff Ludwig. They'll be glad to answer any questions you may have.

Did you know...?

Governments around the world are spending at least \$500 billion of taxpayers' and consumers' money each year in support of activities that harm the environment, such as mining, logging, irrigation, pesticide and fertilizer use, crop and livestock production, energy consumption, and driving. - Worldwatch Institute, *Vital Signs* 1997

PrairieView Golf Course News

North German Church Road, Byron (815) 234-GOLF(4653)

Clubhouse Expansion Well Underway

PrairieView's exciting clubhouse expansion project is nearly 50% complete as of November. Completion date is expected to be near the first of February, 1998 - well in time for the opening of the new golf season!

Golfers will readily notice a significant increase in the renovated clubhouse's enclosed first floor square footage - going from a minuscule 1,502 square feet to over 4,032 square feet. The much needed expanded clubhouse dining area, with seating for 60 overlooking #9 green, will be located in the new addition to the west.

In the area of food/beverage, emphasis will remain on the fast, cost efficient walk-up service that the clubhouse has employed in the past. However, golfers will be happy to find a new expanded menu with more variety, including made-to-order selections. Also, for the first time, the clubhouse will offer a limited mixed drink bar service on a regular basis.

One of the most recognizable improvements to the new clubhouse floor plan will be in the much improved men's and ladies upstairs lockerrooms featuring enlarged toilet facilities, changing areas, locker space, and basic shower facilities. Also, additional future lockerroom and restroom space will be located in the lower level of the new addition, close by to a future golf club storage room.

Last, but not least, the new, more spacious PrairieView golf shop will be located in the first floor addition and overlook the #1 tee and #18 green. A new north entrance offers registering golfers easy access to the cart storage area to the north of the clubhouse.

PrairieView golfers, we believe, will be very happy with the new clubhouse. All the clubhouse staff eagerly look forward to seeing everyone at next spring's clubhouse "grand opening." Watch for future announcements and stay warm!



G. C. Open In November

As in the past, PrairieView Golf Course will remain open for golf on a day-to-day basis seven days a week into November subject to weather conditions. However, as clubhouse construction continues through January 1998, golfers will be registering and starting play from an entirely new location!

The two trailers used for temporary quarters in September and October will no longer be used. The new "winter" clubhouse will be housed in the old administrative building, also know as the "farmhouse," located directly across the street from #15 green. This building will continue to serve as a temporary clubhouse throughout the winter until the new clubhouse is complete.

November Operating Hours - PrairieView course hours are from 9 am - 4 pm each day, weather permitting. Please call ahead to be sure current course and weather conditions permit opening the course that day. Reservations will continue to be accepted, but only 24 hours in advance due to variable weather conditions.

New Clubhouse Location - Access to the "farmhouse" is directly off River Road. Turn at the forest preserve entrance and the clubhouse is the first building on the right, directly across the road from #15 green. Parking, golf carts, etc., are all available at this location and golfers are asked not to park or begin play at the old clubhouse location. Hole #16 will serve as the starting hole for play in November.

Special Golf/Cart Rates - For November, golfers need only pay the regular nine-hole weekday or weekend green fee and cart rates to play either nine or eighteen holes. In addition, special twilight rates start at 2 pm each day. Season golf passes are still valid for November play or until the course closes for the season.

Clubhouse Services Available - Basic concession and snack items, golf merchandise, golf carts, and indoor restrooms will be available at the new clubhouse location. Season passes, vouchers, and gift certificates will also be sold at the "farmhouse" location. Golfers may call 815-234-4653 for more information.

'98 Passes On Sale

Christmas is just around the corner! What better gift for the golfers in your family than a 1998 season golf pass at PrairieView.

All 1998 season golf passes are now on sale at the 1997 pre-season rates if purchased prior to 4 pm Monday, December 22.

PrairieView's popular VIP debit cards may also be purchased at an extra early bird savings in November/December.

Because of the ongoing clubhouse construction, all passes, vouchers, and gift certificates will be sold at the old administrative center. This, our "third" golf clubhouse of the season due to the construction, is located just inside the forest preserve's entrance off River Road (first building on the right).

Please call 815-234-4653 for more information and fees.

December hours are:
Tuesday - Saturday 9 am - 4 pm.

Turf Notes

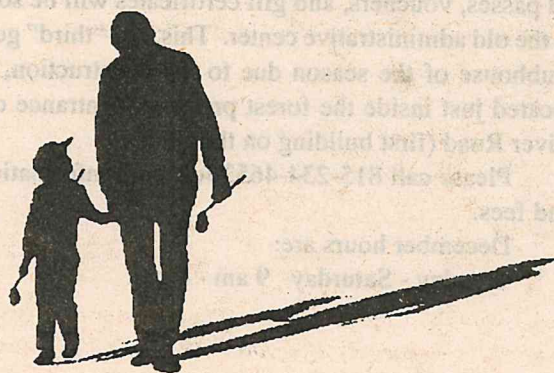
The capital crews have been busy at PrairieView this year. Their projects fall into three different categories: building, earth moving, and planting.

Spring saw construction of two dispensing machine shelters. One built at the driving range tee now houses our automatic ball dispensing machine, a soft drink machine, and a washer to clean driving range balls. Another built near the practice putting green houses soft drink dispensers. The capital crew buried water, electric, and phone lines to both shelters. This fall, both buildings plus the concession shelter at 5 and 14 greens and PrairieView's irrigation pump house were stained by a painting contractor.

Most of the capital crew's efforts went into earth moving projects. The first order of business this spring was to level and sod several drainage lines installed at the driving range late fall of 1996. Using golf course architect Jim Spear as a consultant, construction of new forward tees began. Tees on holes 7, 11, and 12 are complete including seed, sod, and irrigation. Ongoing soil hauling and shaping of tees 2, 6, 15, and 16 will continue as long as weather permits this fall. Two fairway bunkers on the right side of hole number 6 have been replaced by a series of moguls stretching down to the new forward tee. Two left side fairway bunkers were also filled and replaced by three moguls. Byron Forest Preserve crews hauled over 6,000 yards of soil from a site located on Preserve property. A dump truck on loan from the City of Byron, as part of an intergovernmental agreement, really helped to speed up the hauling process. When the contractor excavated the clubhouse basement, they hauled an additional 2,000 yards of fill dirt to our construction sites.

As part of a concerted effort to rapidly establish native plant areas at PrairieView Golf Course, capital workers installed 39,000 prairie plugs in an area around PrairieView's front door sign (corner of German Church and River Roads), in the rough between 7 and 11 fairways, behind 9 green on the west slope of 8 tee, east of 8 tee, in a planter at 6 tee and around the clubhouse entrance. They also planted 500 prairie plants plus woody and herbaceous perennials in planters built at 1 and 10 tees. This fall, with the help of a contractor, 30 coniferous, evergreen, and three deciduous trees were transplanted to areas near 8 and 10 greens, 2 green, 3, 9, and 11 tees, and the right bunker on 18 fairway. Crews edged, staked and wired, watered and mulched them immediately to assure their best chance of survival. If conditions permit, about 20 - 6-10" deciduous trees will be planted later this fall.

The major construction projects have been highlighted. There were numerous other "small" improvements to PrairieView this year. You'll notice them next year when you come out to play. In the next Panorama, construction goals for 1998 will be outlined.



WIFR Wins Junior Golf League

In a close finish to end the season, the WIFR 23 team of junior golfers hung on to win the new Fall Junior Golf League at PrairieView GC. Play in the new league began on August 28 with six eight-player teams and concluded on October 2.

WIFR led the standings all seven weeks going into the final match. Trailing WIFR by 1 1/2 points going into the final match, season long second place team Byron Bank still had a chance to finish first overall. Byron Bank needed to finish first, Quality Metal second, and WIFR third in Thursday's final match in order for Byron to pick up the needed 2 points to overcome WIFR.

As the final team scores were tallied, only eight strokes separated the three team scores used to determine the final points earned. Quality Metal, in a surprise finish, edged both WIFR and Byron Bank, and killed any chance for Byron to overcome WIFR.

The final team standings and player rosters were:

1. WIFR 23 - 28 points
2. Byron Bank - 25.5 pts
3. Quality Metal - 18.5 pts
4. Stillman Bancorp - 13.5 pts
5. Williams & McCarthy - 12 pts
6. American Nuclear Society - 10.5 pts

Congratulations to all 48 players from the Byron, Stillman, and Oregon area who participated in the junior golf league's inaugural season. A special thank you to the team coaches, assistants, all the volunteers, and team sponsors for their help in a successful first season of play. Generous donations for the leagues opening and closing night cookouts came from Cacciatore's of Byron, M & M Food Mart, Kaufman's Super Valu, and McDonalds.

PrairieView Sets Records

As anyone who has played at PrairieView GC in 1997 well knows, golf activity in 1997 was at an all time high. Coupled with fantastic weather, a tremendously popular golf course, enormous growth in junior golf play, and various other factors, PrairieView golf rounds this last season increased by a whopping 35% over 1996! With only a few weeks left in the 1997 season, total golf rounds for the year are approaching 38,000 rounds or nearly 10,000 more than last year. Even more significantly, golf course gross revenue has increased by nearly \$200,000 over last year's record ending total of the \$659,000.

The new clubhouse expansion, the new tee construction, tree plantings, and native prairie landscaping are all projects that will further enhance the future growth, the natural beauty, and the every day enjoyment of playing one of the finest public golf facilities in Illinois and the midwest. The entire golf course staff would again like to thank everyone for their continued loyal support as PrairieView builds for the future.

Pro Shop Sale

We may be harder to find, but the extra savings will be well worth it! Come see us at our new location across the street from #15 green and take advantage of our huge pro shop clearance sale. Everything is on sale-we don't want to move it again!

Golf clubs, balls, apparel, gloves, and more are all on sale until Dec. 22. Don't delay, as some items are one of a kind. Give us a call at 815-234-4653-we'll be open limited hours in December (Tues.-Sat. from 9 am-4 pm starting Dec. 2).

Tee Sign Sponsors

PrairieView would like to thank all our current tee sign sponsors for their loyal support over the past three seasons. Individual tee sponsors provide 100% of the funding for all our redwood tee signage.

Tee/hole sponsorship is a three-year renewable agreement open to any business or organization. PrairieView will be soliciting a few new sponsors for the next three-year sponsorship period. For further details, call or see Ken Ledene at 815-234-4653.

2nd Annual Ogle Co. Jr. Championships



Boys Division I (age 17-19)
Par 72 Blue Tees (18 holes)
Ryan Jahn, Byron (78)



Boys Division II (age 14-16)
Par 72 Blue Tees (18 holes)
(right) Tyson Flohr, Chana (81)
(left) Adam Hart, Oregon (91)



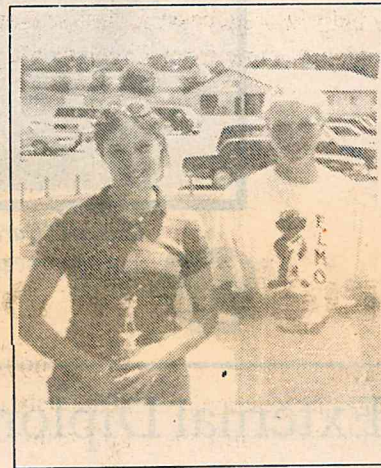
Boys Division III (age 12-13)
Par 72 White Tees (18 holes)
(right) Ryan Smith, Byron (96)
(left) Jimmy Marinelli, Byron (98)



Boys Division IV (age 10-11)
Par 36 Grey Tees (9 holes)
(left) Nick Zeigler, Byron (54)
(right) Dane Mossholder, Byron (68)



Boys Division V (age 8-9)
Par 36 Red Tees (9 holes)
(left) Erik Lindgren, Byron
(right) Matt Bouton, Byron



Girls Division II (age 14-16)
Par 36 Red Tees (9 holes)
(left) Jacquie Lange, Byron (64)
(right) Lindsey Freeburg, Byron (81)

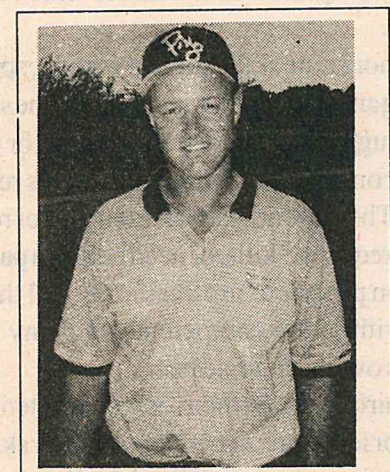


Girls Division III (age 12-13)
Par 36 Short Red Tees (9 holes)
(right) Amanda Reber, Byron (81)
(left) Sara Severns, Oregon (87)



Girls Division IV (age 10-11) & Girls Division V (age 8-9)
Par 36 Red Tees (9 holes)
(l-r) Kristina Marinelli, Byron (69)
Meredith McDonald, Oregon (66)
Britney Lindgren, Byron (75)
Katie Spear, Byron (77)

Annual Gold Medal Tournament



1997 Gold Medal Tournament Champion
John Robertson, Rockford (75-71 = 146)



1997 Gold Medal Tournament Runner-up
(left) Craig Martin
Tournament Championship Flight Winner
(right) Ken Lee



1997 PrairieView Men's Club Champion, Dennis Dunham, Oregon
Besides winning club tournament, following the event, Dennis' name was also drawn to try one shot to earn \$1,000,000 cash prize hole-in-one. Yes, he missed but it was a good effort from 168 yards, landing on the green.