



# PrairieView Golfer

Jack Philbrick, Director  
Ken Ledene, Clubhouse Mgr./PGA Pro  
Steve Storz, Golf Course Supt.

Vinde Wells, Media Coord.  
Michelle Lipps, Media Asst.  
Bob Facklam, Photographer

1994 Vol. 1

7993 N. RIVER ROAD

BYRON IL

(815) 234-GOLF



## PRAIRIEVIEW'S OPENING!!

Golfers....tired of swinging a snow shovel and ready to swing a seven iron? Opening day for the 1994 golf season at PrairieView is just around the corner!

Daily spring hours of operation will begin on Wednesday, April 6th, weather permitting. Unusually warm, early April weather may allow the course to open for walking golfers on Easter weekend, April 2nd & 3rd. The real diehards who think anything above 32 degrees is golf weather can call 234-GOLF for current conditions as we near opening day.

The golf course and driving range will be open from 8 AM to dusk on weekdays and from 7 AM to dusk on weekends from April 6th through April 29th. Most likely, motorized carts will not be available immediately due to ground conditions.

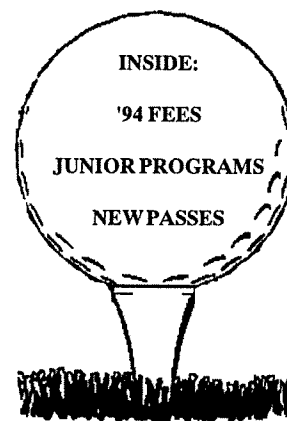
On Saturday, April 30th, PrairieView will begin its normal summer hours of operation - 6 AM to dusk, Monday - Sunday. Reservations for 1994 playdays and leagues can be made by calling 234-GOLF.

## RESIDENT "DISCOUNT" I.D. CARDS

All district resident golfers are reminded to stop by and sign up for a "resident discount ID card" for special daily green fee savings during the 1994 season.

Just present your personal photo identification discount card when registering to play to qualify for discounted rates during regular open play hours. The \$2 discount off any regular daily green fee applies to all categories - adults, seniors, and juniors; weekdays and weekends; and also for twilight fees.

New for 1994, adults will receive a \$3 discount on 18 holes on Mon-Fri before 3 PM. The fee for a new 1994 resident discount ID card is \$1. Cards issued last season can also be renewed for a \$1 fee.



## 1994 PRAIRIEVIEW GOLF FEES

GREEN FEES:*	WEEKEND/ HOLIDAY 9/18 holes	WEEKDAY 9/18 holes
Daily	\$12 / \$19	\$10 / \$16
Senior**	\$12	\$8 / \$12
Junior**	\$8	\$8
Twilight 4 PM	\$10	\$10
5:30 PM	\$8	\$8

\* Byron Forest Preserve District residents presenting a "Resident Discount Card" at registration receives a \$2 discount off each of the above fees!! Adults will receive a \$3 discount on 18 holes on Mon-Fri before 3 PM.

\*\* Special senior/junior rates offered before 3 PM on weekdays and after 3 PM on weekends/holidays.

CART FEES:	9-HOLE	18-HOLE
Weekday	\$10	\$16
Weekend/Holiday	\$12	\$18
Senior*	\$8	\$12

\*weekdays before 10 AM

Twilight at 5:30 pm

Weekday	— \$8 —
Weekend	— \$8 —

LEAGUES/PLAYDAYS (Green Fees):

Weekday	\$9	\$15
Weekend	\$12	\$18

## NEW SENIOR TEN-PLAY PASSES!!!

All senior resident and nonresident golfers have a new weekday 10-play pass available to them for the 1994 season at PrairieView! PrairieView offers regular weekday senior rates; however, seniors can save even more by purchasing a 10-play senior pass.

The 9-hole card costs \$55 for residents and \$70 for nonresident seniors. The 18-hole card is \$90 for residents and \$110 for nonresidents. For the additional savings these cards offer, play must start before 10 AM on weekdays.

Use your new senior 10-play card to play in one of the new weekday morning leagues forming! Sign-up sheets and information are available at the "Golf Club at PrairieView" Open House on Saturday, March 12, 1994, at the Jarrett Prairie Center from 10AM-4PM.

## Job Openings

PrairieView Golf Course is now accepting applications for both clubhouse and grounds maintenance part-time seasonal positions. All positions require applicants to be 18 years of age or older.

Applications are available at the Jarrett Prairie Center, Monday - Saturday, 8:30AM-4:30PM. Screening and interviewing will take place immediately. Several four- to seven-month, part-time seasonal positions are available.

## 1994 Season Reserve Tee Times Available

Request forms for 1994 PrairieView Golf Course season reserve tee times are now available and may be picked up at the PrairieView Clubhouse or at the Jarrett Prairie Center. Hours are Monday - Friday, 9AM - 3PM.

Season reserve tee times are available to both residents and nonresidents of the Byron Forest Preserve District. District residents who held a season reserve time in 1993 will be given first consideration when requesting the same time for the 1994 season.

The following requirements apply. Season requests must be for the same tee time, on the same day of the week, and for a minimum of 16 dates. Requests are available to foursomes only and must be submitted on the PrairieView season reserve form, listing first, second, and third choice. All choices must be compatible with PrairieView's ability to host tournaments, golf outings, and leagues.

The 1994 minimum fee is \$52 per foursome which includes the minimum required 16 reserve times. Additional tee times are \$2 per reserve date. All requests for PrairieView season reserve tee times will be filled at 10 AM on Saturday, March 26th. Only completed request forms with full payment included will be considered.

Please call 234-GOLF for further information.

## STUDY SHOWS INSECTICIDES STAY PUT

Lawn Microbes Munching Chemicals - By Steve Storz, Golf Course Supt.

A six-year study of insecticides shows only a tiny fraction move downward from grass to soil after they're applied to typical turf.

"The finding proves false charges that lawn care and golf course insecticides threaten groundwater and reinforces other studies that show turf acts like a sponge, soaking up and breaking down chemicals applied to it," said David Shetlar, a researcher involved in the study, and a landscape entomologist at Ohio State University.

The study suggests that large areas of turf could be used as giant filters to clean polluted water, because microbes in the turf ate any substance containing carbon. Most pesticides and many other pollutants are carbon-based.

In the study, between 95 and 99 percent of insecticides applied were located in turf thatch, where residues were eaten by bacteria and other microbes. Despite repeated sampling over six years, most of the insecticides were virtually undetectable in soil under the thatch.

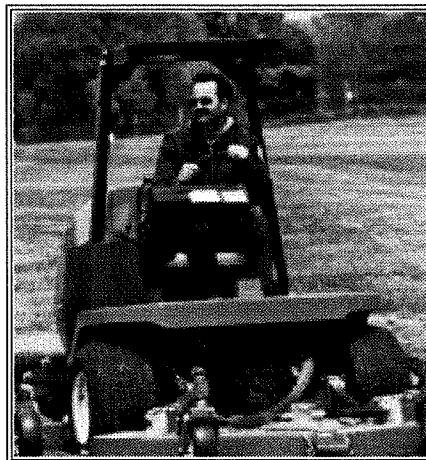
Thatch is a tightly woven layer of dead and living grass stems and roots found between the soil surface and the base of grass blades. It can vary from paper-thin to several inches thick. Thatch at the study site was about a half-inch thick.

The researchers followed the fate of nine widely used grub-control insecticides applied to a golf course in Wooster, Ohio. The study was started by Harry Niemczyk, turfgrass entomologist at Ohio State's Agricultural Research and Development Center in Wooster.

Shetlar and Niemczyk found that microbes in thatch were responsible for breaking down chemicals, especially oftanol, one of the nation's most common lawn insecticides. The microbes literally ate oftanol.

"We've found that once the microbes figured out how to digest one chemical, they may have discovered how to eat other insecticides," said Shetlar.

"This is an exciting finding because we may have uncovered an ecosystem for helping detoxify polluted water. Other studies have also shown that turf is a good biological filter that stops toxins from reaching soil and getting into the groundwater," added Shetlar.



Golf Course Superintendent Steve Storz.

## A Few Good Men, Women, Boys, and Girls

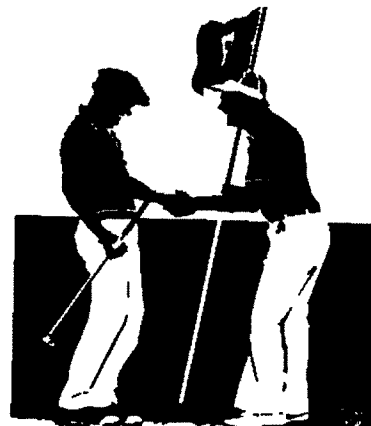
By: Steve Storz,  
Golf Course Superintendent

In 1994, Ken Ledene (Clubhouse Mgr.) and I would like to lay the ground work for a volunteer program at PrairieView Golf Course. Some of the possible duties would include picking up broken tees, emptying trash baskets, changing markers on the tees, fixing ball marks, and applying soil and seed mixture to divots on the fairways and tees. As the number of rounds played builds to nearly 30,000 this year, turf wear and tear will become increasingly significant. A group of faithful volunteers could very well be the advantage which keeps PrairieView's reputation as a good golf course expanding.

If you are interested, please call Ken at 234-GOLF or myself, Steve Storz, at 234-8535 ext. 208.



With the addition of over 50 trees, PrairieView will be much safer in '94.



# The Golf Club at PrairieView News

By Fred Brune, Co-Chairman

It's time to replace the thoughts of wind chill, shovels, boots, and mittens with gentle breezes, sand trap rakes, golf shoes, and golf gloves. In only a few short weeks, the GOLF SEASON BEGINS!!!

This year marks the first year for *The Golf Club at PrairieView*. The *Golf Club at PrairieView* began for many reasons. However, the main reason would be to simply provide people the opportunity to participate in many different, and FUN, events. Most events will use handicaps to encourage participation by everyone. Speaking from experience, it seems when a new course opens up, it's almost impossible to meet people. Simply by becoming a member and participating in events, you'll meet new people and help assure yourself of a terrific golfing season.

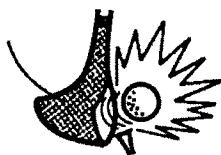
This year, *The Golf Club at PrairieView* is running under a temporary, standardized constitution and bylaws. Our goal is to establish a long-term, self-perpetuating association not dependent on any one, or small group of, individual(s). Instead of just slapping something together, we decided to take the time and do it right. We expect to present our bylaws to the members by October 1, 1994.

## DUES...

Dues will be \$35 for a single and \$50 for a family membership. There are many items to take into account when establishing dues for the year. The cost of handicaps, printing and postage, membership in the USGA, the cost of tournaments (Lincoln Highway for example), commitments to junior golf, wall plaques in the clubhouse, to help build a respectable prize fund, if attendance at an event is low, and the cost of trophies make up most of our expenses. The "Miscellaneous" category covers the lesser expenses, such as bank charges. To date, the "Budget" has consumed the greatest amount of our time, energy, and thought. We feel we have put together an affordable package with something in it for everyone.

## COMMITTEES...

Everything we set up is geared toward the committee approach. We have committees for Men's, Women's, Senior's, Couple's, and Junior's events. The members of each committee will decide the events they want to sponsor. We feel this should help eliminate poorly attended events. Now, we just need committee members! A few hours right now will assure success not only this year but for many years to come!



## GROWTH...

Our goals are very ambitious, but with good reason. The interest demonstrated by so many people at the end of last year and throughout the winter leaves us all very optimistic. Please plan to attend our open house on March 12, 1994. Your support and input at this time is vital to the future growth of *The Golf Club at PrairieView*.

Please note the upcoming important dates and events that are scheduled.

## THANK YOU...

There are several people that have contributed a great deal of time, energy, and personal funds to get everything going. We have tried to take several different perspectives into account when putting our association together. However, the most important opinion is yours! The more input received, the more everyone will feel this is truly their association.

We would like to thank Ken Ledene, Clubhouse Manager, for all the time and expertise he offered us this winter. In addition, Ken has established one of the most dynamic Junior Programs available anywhere. *The Golf Club at PrairieView* pledges to fully support Ken's excellent program. We are truly lucky to have someone of Ken's talent take such an active interest in our association.

Also, we would be remiss if we didn't acknowledge the contribution of Denny Dunham. It was Denny that actually began the process that has led to the formation of *The Golf Club at PrairieView*. I'm sure Denny would be the first to agree that it would have been a lot easier to have just folded up the tent last June. Thanks for being so stubborn!!

## MARK YOUR CALENDAR!!!

**March 12, 1994 10 AM-4 PM - OPEN HOUSE** at the Jarrett Prairie Center. This is your chance to join *The Golf Club at PrairieView* and have all your questions answered. There will be refreshments and, at 3:30 PM, we will hold a drawing for a FREE Single and Family Membership for the 1994 season!!! Plan to stop by. Let's get the year off to a roaring start!

**March 24, 1994** Event deadline. Committees present their list of events.

**March 31, 1994** *The Club's* 1994 schedule of events is official!!

**April 6, 1994** Call in sick, it's OPENING DAY!!

**April 24, 1994** "Scramble(d) Egg Event" Come one, come all! This is our first official event. Breakfast followed by a scramble. Meet new people and renew old acquaintances. Look for sign-up information in the clubhouse.

**April 30, 1994** Sign-up day for the Junior Program.



## "PACE OF PLAY" POLICY & GOALS FOR '94

The subject of "speed or pace of play" on a golf course, more specifically PrairieView, is a serious issue to many golfers.

PrairieView's roughs are maturing and dense, wooded areas are being cleared, causing less problems for players.

With the rapid maturing of the course comes more golfers who are making PrairieView their golf course of choice to play often.

An essential goal for PrairieView in 1994 is to establish policies to promote, encourage, and maintain a reasonable "pace of play" for all golfers to enjoy. The new "Golf Club at PrairieView" golfer's association is urgently concerned in helping to develop strategies and programs to promote and educate golfers to play at an acceptable pace.

Over the next few weeks and months, the PrairieView staff and interested individuals will be developing an outline of ideas and programs to address this issue. We will very much appreciate your support and encouragement this season and we will keep you informed of future developments.

## LESSONS BY PGA PRO KEN LEDENE

### LESSON FEES:

PRIVATE 30 Min./One Hour	
Junior	\$12 / \$20
Adult	\$15 / \$25

SERIES (4) 45 Min. (1) Person	SERIES (4) 45 Min. (2) People
Junior	\$50
Adult	\$65
	\$70
	\$100

**Note: Adult Clinics in May & June.**

## SEASON PASSES

	Single	
	<u>Resident</u>	<u>Non-resident</u>
Adult	\$315	\$415
Senior	195	245
Junior	50	75
College Student	95	120

	Couple/Family	
	<u>Resident</u>	<u>Non-resident</u>
Adult	\$525	\$625
Senior	345	445

10-PLAY WEEKDAY PASS*	<u>Resident</u>	<u>Non-resident</u>
	\$110	\$130

\*\$4 additional fee for weekend/holiday use.

SENIOR** (9)	\$55	\$70
(18)	\$90	\$110

\*\*Before 10 AM on weekdays except holidays.

### SEASON CART PASSES:

Cart Pass I - \$425 - for individual passholder's use  
Cart Pass II - \$625 - for family season passholders

## LET'S SET A DATE...

PrairieView Golf Course is now accepting dates for playdays, leagues, and tournaments. Special events are scheduled on a first come, first serve basis, so please call us now.

PrairieView's staff looks forward to helping you plan golf leagues and playdays. We will assist you in arranging your event to maximum satisfaction.

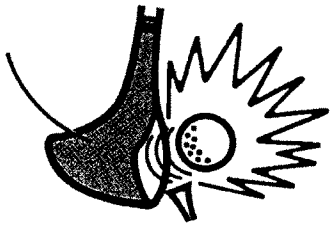
Our staff will take personal care of all your playday group needs. This will include the following:

- \* Awards dinner
- \* Luncheons and cookouts
- \* 75 golf carts
- \* Prizes (inquire about discounts)
- \* Beverage cart and driver provided
- \* Special group rates
- \* Free cart passes and golf

Please call for more information, 234-GOLF.

## NEW MENU

The Byron Forest Preserve District has a complete service menu available for golf outings, weddings, holiday parties, conferences, and many more occasions. A 15% service charge and 6.25% sales tax will be added to all menus. Room rental rates are included in all menus. For more information on our menus or to reserve a room, call (815) 234-8535.



# ATTENTION JUNIOR GOLFERS!!!



Registration and sign-up for the **NEW 1994 JUNIOR GOLF PROGRAM** will be on Saturday, April 30, 1994, at 1 PM at the PrairieView clubhouse. For late registration, please call 234-GOLF.

**DATES/AGES:** Mondays, June 13 thru August 8: Boys & girls ages 7 thru 11.

Thursdays, June 16 thru August 11: Boys & girls ages 12 thru 17.

**ENTRY FEE:** Junior lesson and league fees for the entire nine weeks of the program are:  
Byron Forest Preserve District resident - \$23  
Out-of-district nonresident - \$26

Entry fee includes: lessons, range balls, tee-shirt, tees, ball markers, rule books, and prizes.

**Entry fee does not include green fees.**

## Junior 1994 Season Passes:

Resident - \$50      Nonresident - \$75

## Daily Junior League Green Fees:

Resident;	\$6 / 18 holes	\$3 / 9 holes	\$1.50 / 3-5 holes
Nonres.:	\$8 / 18 holes	\$4 / 9 holes	\$2.00 / 3-5 holes

## Times:

### MONDAYS:

1:00 pm 10-11 yr Boys  
1:20 pm 10-11 yr Girls  
1:40 pm 7-9 yr Boys/Girls

### THURSDAYS:

1:00 pm 14-17 yr Boys  
1:20 pm 12-13 yr Boys  
1:40 pm 12-17 yr Girls



Above times may be adjusted before the starting day based on the number of individuals in each age group. Please arrive 15 minutes prior to designated lesson time. Class lessons include the above 20 minutes of instruction followed by 30 minutes of practice, games, and proficiency testing for a total of 50 minutes.

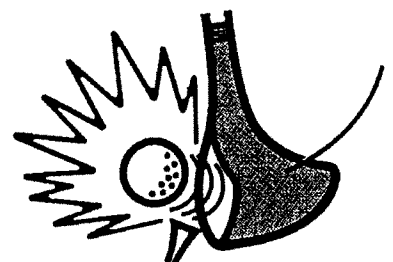
Golf course play is encouraged within the PrairieView junior play provisions. Reserve tee times for junior league activities will be available following lesson periods on Mondays and Thursdays.

Monday juniors will play 3 to 5 holes of supervised golf starting week five. Please allow a minimum of 1 1/2 hours total for each class beginning this day. Thursday juniors will play 9 holes of golf starting week three. Please allow a minimum of 2 1/2 hours total for these classes.

Mail-in registration form on page 7.



## CALL NOW TO REGISTER! (815) 234-GOLF





**PrairieView**

**1994 JUNIOR GOLF PROGRAM  
ENTRY FORM**

**NAME** (Please print) \_\_\_\_\_

**ADDRESS** \_\_\_\_\_

**PHONE NUMBER**    **HOME** \_\_\_\_\_    **WORK** \_\_\_\_\_

**AGE** \_\_\_\_\_    **BIRTHDAY** \_\_\_\_\_

(Please circle one)

**EXPERIENCE:**    **HAVE PLAYED**                      **HAVE NOT PLAYED**

**SEX:**    **MALE**                      **FEMALE**

**SHIRT SIZE (Adult Sizes):**    **S**    **M**    **L**    **XL**

**PLEASE MAKE CHECK PAYABLE TO PRAIRIEVIEW GOLF COURSE  
IN THE AMOUNT OF \$\_\_\_\_\_ PER CHILD.**

**I UNDERSTAND THAT THE PRAIRIEVIEW GOLF COURSE IS NOT LIABLE  
FOR ANY ACCIDENTS OR INJURIES SUSTAINED WHILE PARTICIPATING  
IN ANY PROGRAMS.**

**PARENT'S SIGNATURE** \_\_\_\_\_ **DATE** \_\_\_\_\_

**LESSONS WILL BE GIVEN BY: KEN LEDENE, PGA PROFESSIONAL**

**\*\*\* VOLUNTEERS WELCOME \*\*\***

**On occasion, conflicts with course availability and/or weather conditions may  
result in schedule changes.**

**Please call Ken for more information 234-4653.**

## PRAIRIEVIEW TO HOST STATE REGIONAL JUNIOR TOURNAMENT

The Illinois Junior Golf Association has selected PrairieView Golf Course to host its 1994 Western Regional Tournament on Thursday, June 23rd. A field of 120 junior golfers ages 10 - 19 are expected to enter the tourney.

*The Illinois Junior Golf Association was founded in 1967 to provide a competitive tournament golf program for juniors with the goals of promoting the game among younger players and developing "Better People Through Junior Golf"..... the IJGA slogan. In 1991, the Illinois Section of the Professional Golfers' Association and the Chicago District Golf Association joined with the IJGA to create an expanded and restructured organization. Hundreds of boys and girls participate in more than 30 IJGA events annually. - courtesy of the Illinois Junior Golf Association's Brochure*

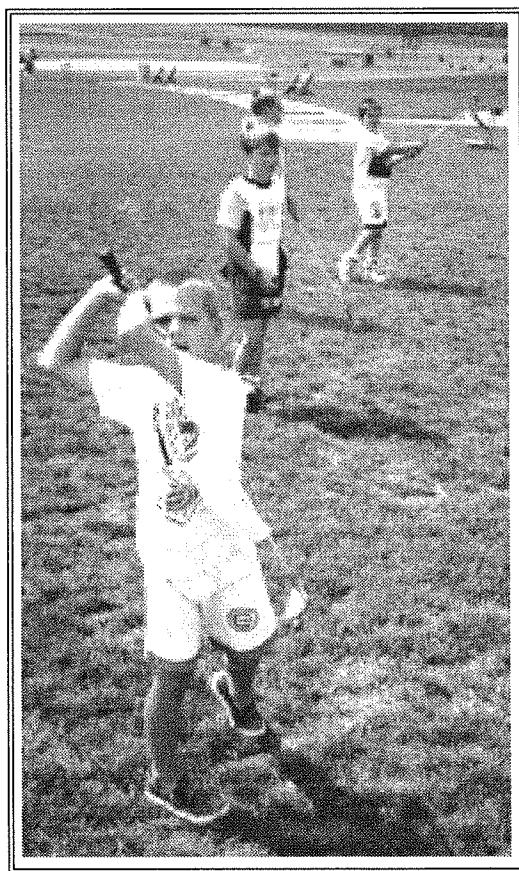
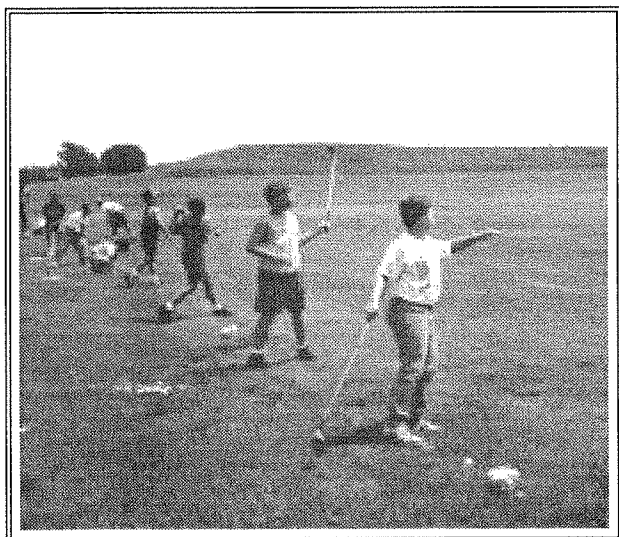
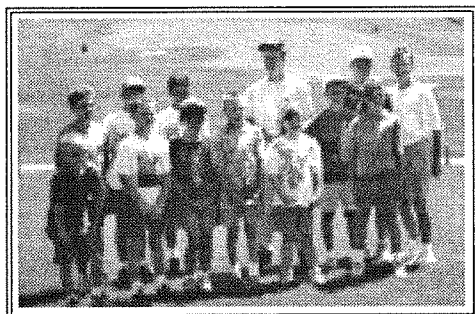
Every IJGA tournament is conducted with strict adherence to the USGA Rules of Golf and the traditional high standards for etiquette and courteous behavior long associated with the game. Player dress requirements as established by the IJGA Governing Board are strictly enforced.

The IJGA publishes a players handbook and quarterly newsletters to keep participants informed on junior tournaments, educational activities, instruction, scholarships, and awards, and general information of interest to junior golfers. In addition, the IJGA compiles and publishes a listing of junior events statewide under the banner of the "Prairie State Junior Golf Calendar".

PrairieView is proud to help promote and assist the goals of the IJGA. Illinois Junior Golf Association membership applications are available by contacting Ken Ledene, PrairieView PGA Professional, at 234-GOLF. Annual dues are \$10 for ages 14 to 19. There is No Annual Fee for ages 10 to 13 inclusive.

Says Roger Ulseth, IJGA Executive Director, "Thank you for your generous support of IJGA; it will be a special treat to visit your great facility."

### Junior Golfers of '93







# PrairieView Golfer

Jack Philbrick, Director  
Ken Ledene, Clubhouse Mgr./PGA Pro  
Steve Storz, Golf Course Supt.

Vinde Wells, Media Coord.  
Michelle Lipps, Media Asst.  
Bob Facklam, Photographer

1994 Vol. 2

7993 N. RIVER ROAD

BYRON IL

(815) 234-GOLF

## CLUBHOUSE EXPANSION PROPOSED!

Members of the Golf Club at PrairieView took an appeal for an expanded clubhouse to the Byron Forest Preserve Board of Commissioners at the board's April 19 meeting.

Dennis Dunham, spokesman for the golf association, presented the board with a proposed sketch of the interior and exterior of the expansion. Dunham also gave commissioners a letter which outlined why the Golf Club of PrairieView supports the project.

"For PrairieView Golf Course to maximize the number of rounds of golf played per golfing season and to maximize golf-related revenue and collateral service-related revenue during the golf season, an expansion of the

clubhouse facilities is required," read the letter, which was signed by Dunham and Fred Brune, both co-chairmen of the golf association.

The letter went on to say the present clubhouse needs better restroom facilities, locker room facilities, meeting rooms for playdays and banquets and support facilities, a golfer bar and grill room, a deck, terrace or patio overlooking the 9th and 18th greens, and an expanded golf pro shop.

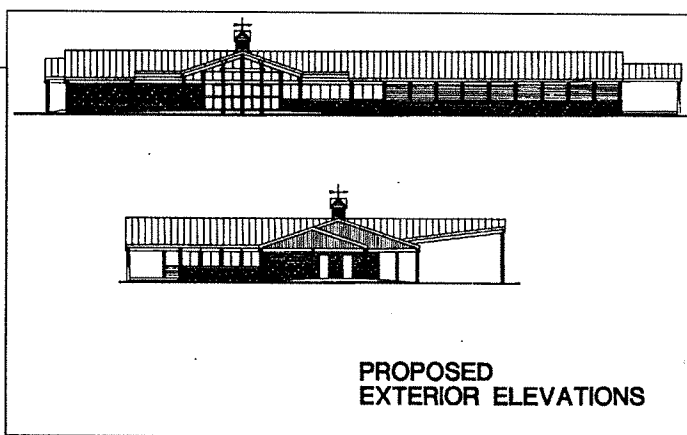
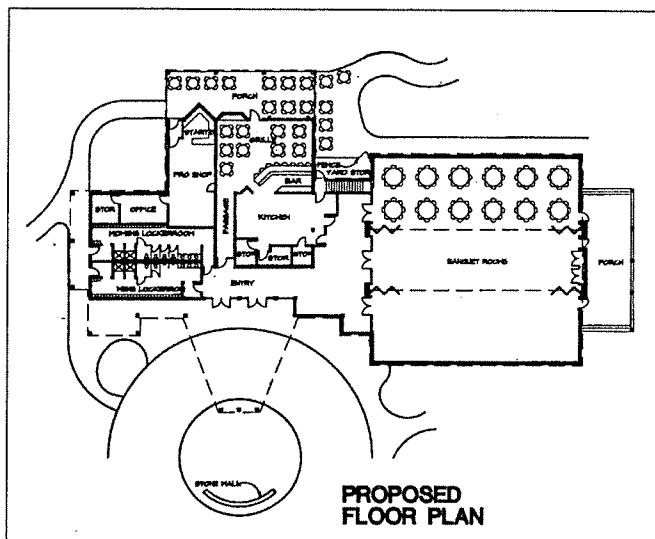
Dunham said the expansion, with its added facilities, is necessary to accommodate the ever-increasing number of golfers the course is attracting.

"PrairieView Golf Course continues to mature, and as it matures, area golfers

are coming to recognize it as one of the finest golf courses in northern Illinois, Chicagoland and southern Wisconsin. This PrairieView course in Byron has the potential to become one of the top 50 courses in the area..." the letter said.

Director Jack Philbrick said during the April 19 meeting that the project could be funded over the next three years without raising real estate taxes. He added that if planning is initiated prior to this October, the new facility could be completed before the next golf season without disrupting course operations.

The issue was referred to the Building and Grounds Committee.



These drawings are on display at the clubhouse.

Architectural drawings donated by:

Richard Hynes & Associates  
Rockford, Illinois

*Do you know?*

We believe that our volunteer program is unique to this area. If you know of any other course that utilizes volunteers, please let us know.

*Thank you*



*Pictured above (left-right): Bill Darby, Course Supt. Steve Storz, Mary Jo Talsma, Dick Boyd, Fred Courtright, John Bennett, Beatrice Hildebrand, Volunteer Coordinator Betty Fetzer, and Clubhouse Manager/Golf Pro Ken Ledene.*

## SENIOR VOLUNTEERS HARD AT WORK

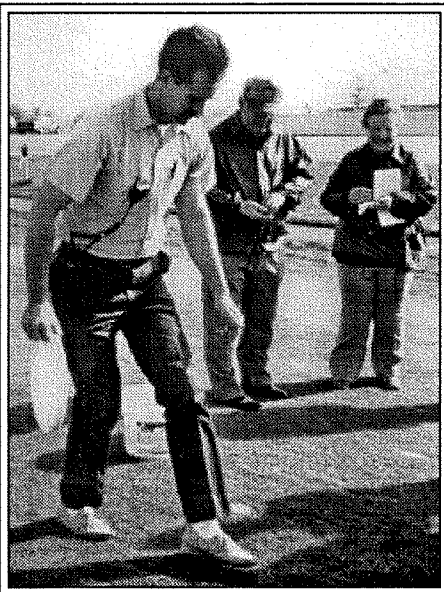
On May 2, the Byron Forest Preserve Senior Volunteers achieved yet another milestone. From 8:30-10:30AM, a group of them, accompanied by ranger Gene Gallagher, began some much-needed tee maintenance work at PrairieView Golf Course.

On tees 1, 2, 4, 17, and 18, they emptied trash baskets, picked up broken tees, and filled unrepaired divots with a sand-seed mixture.

Because of the Senior Volunteers' commitment to do this important, yet time consuming task, PrairieView's tees will be neater and will recover much more quickly from golf club damage this summer.

Not only will their efforts free Golf Maintenance staff to do other work, golfers will have even more reasons to play at PrairieView.

Thanks Betty Fetzer and Senior Volunteers. You are an ever-increasing benefit to the Byron Forest Preserve District, PrairieView Golf Course, and the people of this district.



*Golf Course Superintendent Steve Storz demonstrates the "seed and sand shuffle" for PrairieView's new volunteers.*



*Golf Superintendent Steve Storz reviews the course layout with volunteers (left to right): Mary Jo Talsma, Volunteer Coordinator Betty Fetzer, John Bennett, Clubhouse Manager/Golf Pro Ken Ledene, Nancy Courtright, Beatrice Hildebrand, Dick Boyd, and Bill Darby.*

**The Byron Forest Preserve District and PrairieView Golf Course welcome volunteers of all ages.**

**If you are interested in being a volunteer at PrairieView or at the Jarrett Prairie Center, please call Volunteer Coordinator Betty Fetzer at (815) 234-8535.**

## *Speed of Play Policy*

Our goal for 1994 is for each foursome to complete a round in 4 hours and 10 minutes, including stopping time at the turn.

Each group has the responsibility to keep pace by maintaining a 9-minute interval with the group ahead.

The rangers have the authority to keep play moving at the proper pace.

A player may be asked to pick up his/her ball to regain the proper 9-minute interval between groups.

Failure to follow our Pace-of-Play policy may restrict future ability to make reservations.

## *Stopping at the Turn*

Groups stopping at the turn for breaks will relinquish their position on the 10th tee under the following conditions: 1.) the tee is open, 2.) their entire foursome is not ready to play, and 3.) all members of the following group are on the 10th tee ready to tee off.

## *Rain Check Policy*

Rain checks are issued if the course is closed due to inclement weather subject to the following conditions:

~ Rain checks are issued for green fees, motorized cart fees, and reservation fees to a specific individual and must be used during the current season.

~ Once a round has begun, an individual is entitled to a rain check only, no cash refund. Original receipt must be presented to be issued a rain check.

~ 100% credit rain checks are issued for original, full 9, 18, or twilight rounds if less than 6 holes are completed.

~ 50% credit rain checks are issued for an original 18 hole round if more than 6 holes and less than 14 holes are completed.

## *PrairieView Golf Course is a Public Facility For Reserved Tee Times Call (815) 234-GOLF (4653)*

~ Residents and season passholders may reserve up to 8 days in advance, 7 days for all others. Weekend/holiday reserves are for 18 holes only before 1:00 PM and require a PrairieView season pass number or Mastercard/Visa.

~ Please cancel a reserve time at least 24 hours in advance. Failure to give timely cancellation notice of a weekend reserve will result in a credit card charge.

~ Reserve time fees are: \$2.00 on weekends/holidays, \$1 on weekdays, with N/C for a weekday season passholder.

~ Reserve tee time is available before 4:00 PM, Monday-Sunday. Singles can only be accepted as walk-ins.

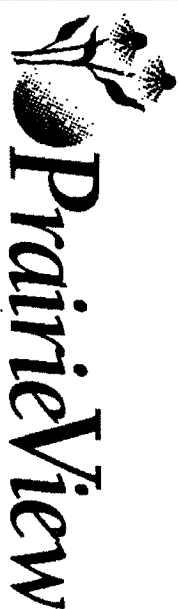
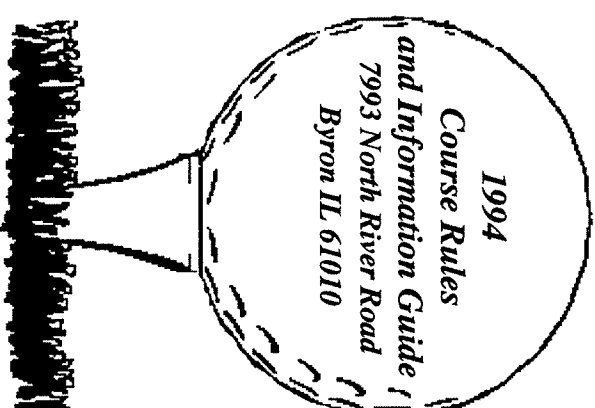
## *PrairieView Golf Course Supervisory Staff*

Ken Ledene PGA Professional/Clubhouse Manager  
Karla Coy Assistant Clubhouse Manager/District  
Food Service Operations Supervisor  
Joe Parks Head Ranger  
Steve Storz Golf Course Superintendent  
Mike Bytals Golf Course Assistant Superintendent

## *"The Golf Club at PrairieView"*

Golf Association  
Membership and Activity Information contact:  
Fred Brune, General Co-Chairman.....874-6759  
Dennis Dunham, General Co-Chairman.....732-7171

# PULL OUT & SAVE

*Golf Shop Schedule  
April - October*

*Information & Reserved Tee Times  
234-GOLF (4653)*

# Prairie View Course Rules

## Requirements for Players

\* Each player is required to have a bag and at least three clubs, one of which shall be a putter. No two players are permitted to play out of one bag. Rental clubs are available.

\* Proper golf attire must be worn at all times. Shirts must be worn at all times! Large knobby spiked shoes are not allowed.

\* Junior golfers and parents should be familiar with policies governing junior play.

## Junior Playing Hours

**Juniors under age 7** - parents please call ahead before bringing very young children. Playing hours are limited to less busy periods. Children must be accompanied by an adult.

**Juniors 7-11** - regular playing hours for this age group are: before 3 and after 5:30 PM weekdays and after 3 PM on weekends and must normally be accompanied by a knowledgeable adult at all times. Some juniors under 12 may, through completion of the junior golf program and proficiency testing, be allowed on the course during certain non-peak hours without an adult.

**Juniors 12-17** - regular playing time is during non-peak hours. May play without an adult during non-peak hours with proven knowledge of rules and etiquette and prior golf experience. With starter's approval, older and/or experienced juniors 12-17 may be allowed to play with an adult during the peak hours of Noon-3 PM on weekends.

**Peak hours are defined as: 3-5:30 PM weekdays, before 3 PM weekends and holidays; and during leagues, playdays, and tournaments.**

## Senior Playing Hours

**Special Senior Daily Rate** hours are Monday through Friday before 3 PM and weekends/holidays after 3 PM.

**Senior 9- & 18-Hole 10-Play Passes** are for use only on weekdays before 10 AM.

**Senior Season Pass** hours are unrestricted play on weekdays and after Noon on weekends/holidays.

## Adult Playing Hours

**Adult hours** are open play 7 days a week for walk-ins and reserves.

**Adult Season Passholders** hours are open play 7 days a week for walk-ins and reserves (except the Gold Medal Tournament). Adult season passes may be used for leagues and playdays.

**Adult 10-Play Pass** hours are 9-hole passes are accepted all day on weekdays and only after 4 PM weekends/holidays; 18-hole passes are accepted 7 days a week; and both may be used for league play. Both 9- and 18-hole passes are restricted for use in playdays and tournaments.



## Registration and Starting Procedures

1. All golfers, including passholders, are required to register in the clubhouse with the cashier/starter before starting each round.
2. Golfers must tee off first tee, unless starter informs otherwise. Players must notify starter if they wish to start on the back nine. Front nine players have priority over groups starting on #10.
3. Players must register individually by signing the daily registration sheet. Special-use cardholders (i.e. season passes, 10 play passes, and resident discount cards) must present card at each use.
4. Registered players must present a valid receipt when requested by a starter or ranger.
5. During peak hours, foursomes are requested to register as a group not less than twenty minutes before their assigned tee time.
6. Twosomes and singles will be paired when the course is crowded. The starter reserves the right to designate foursomes. No more than four players to a group.
7. All players must re-register with cashier/starter when playing additional holes.
8. All members of a foursome must be at the first tee 10 minutes before tee time and ready to play. Groups that arrive late on the first tee will allow next group to play ahead. Check in with first tee starter.
9. Only registered spectators are allowed on the course.

## Motorized Golf Carts

- > Only two riders (except very small children) and two bags are permitted.
- > Cart lessor and cart operator must have a valid driver's license. Juniors under age 16 are not allowed to operate carts at any time.
- > Please observe 90 degree rule when posted.
- > Motorized carts are to be kept 30 feet from greens, except when cart paths are provided. Please do not drive carts on moguls (mounds) surrounding greens and tees at any time.
- > Rules regulating motorized carts are strictly enforced and severe violations will result in revoking cart privileges without refund.



## Rules of Play & Etiquette

- ~ Carefully repair any damage to putting green made by the ball or players.
- ~ Please replace all divots.
- ~ Rake or smooth all holes or footprints in sand bunkers.
- ~ Golf bags and pull carts must be kept off greens and pullcarts off tees.
- ~ Players should avoid damaging the course with practice swings, particularly on tees.
- ~ Please make club selections and be ready to hit when it's your turn.
- ~ Bags and carts should not be left in areas where they cause delays.
- ~ Players have a maximum of five minutes to look for a lost ball if they can do so without delaying following groups.
- ~ Play one ball only - NO MULLIGANS. Practicing is not allowed on the course. Please use designated practice areas only.

\* Only beverages purchased from the clubhouse may be taken on the course. Management reserves the right to refuse service when it's in the club's or customer's best interest.

## "Make Our Day With Four-Hour Play"

On Sunday, May 8, PrairieView inaugurated its 1994 "Pace of Play" program. PrairieView's goal for the '94 season is to establish and maintain a reasonable "pace" or "speed of play" for all golfers to enjoy.

All groups that started before noon on May 8 were given a PrairieView "pace time" scorecard by head ranger, Joe Parks. The new, green pace of play scorecards are intended to help golfers become more aware and individually responsible for "keeping pace" - as noted at specific check points on their individual cards. The PrairieView staff is happy to announce that the preset goal of playing 18 holes in four hours and ten minutes or less was accomplished by everyone!

Thanks to everyone who participated by helping us show that four-hour play is an attainable, worthy goal at PrairieView this season. The program will be repeated periodically throughout the year using the "green" pace scorecards. Also, thanks to Spaulding Golf for donating the two-ball sleeves of "Top-Flites" to everyone who played 18 holes.



## 1994 Season Golf Pass Sales

Early results for 1994 indicate a sizable increase in the sales of season golf passes at Prairieview over the previous year's total. As of May 6, pass sales in all categories total 181 golf passes sold (145 residents and 36 nonresidents). This compares to 133 passes sold in all of 1993.

Our local junior golfers are again showing a strong interest in golf as a favorite sports activity. The total number of individual junior golfers in all categories was 112 as of May 9. We're also glad to see many of our young, new golfers enrolling in the new, nine-week summer junior instruction program!

PrairieView has a total of 246 individuals with season passes.



## Outstanding Response To New Junior Program

The registration and sign-up for the new nine week Junior Lesson and League Program has been met with a tremendous response!

Total enrollment includes over 80 boys and girls between the ages of 7 - 17, with more on the waiting list.

The junior lesson program is scheduled to begin on Monday, June 13th and continues through mid-August. A special mailing will be made several weeks prior to the start of the program including detailed information for registrants and a revised daily schedule based on age and experience.

The Golf Club At PrairieView will be very active in promoting and supporting junior golf in 1994. Many hours of donated volunteer time will be required to make the program as successful as it can be. Also, donated clubs, especially ladies' or junior equipment, would be very much appreciated. Anyone interested in helping, please leave your name or fill out a junior golf volunteer form, available at the clubhouse.

## KEN'S CLUBHOUSE NOTES...

### GOLF LESSONS

It's never too late to set aside some time to learn the golf swing! Session IV - Beginner's Golf Clinic starts on Tuesday, June 7. Registration information is available at the clubhouse or by calling 234-GOLF.

Private individual or group lessons are also available by appointment. The private series of (4) 45 minute lessons is a great idea for Father's Day or anyone else looking to improve all areas of their game.

### PRO SHOP SPECIALTIES

Check out the many new "PrairieView" logo items in the pro shop this season. Items include men's "Aureus" shirts in prints and solids, a huge selection of unisex sweaters and fleecewear, two styles of fleece shorts, baseball-style tops, the new baseball-look "Aureus" caps, and much more!

### ATTENTION!!

Golfers, please remember to periodically check our 1994 Playday/Tournament schedule posted in the clubhouse. The clubhouse staff makes every effort to keep our golfers aware of upcoming events by revising the list regularly.

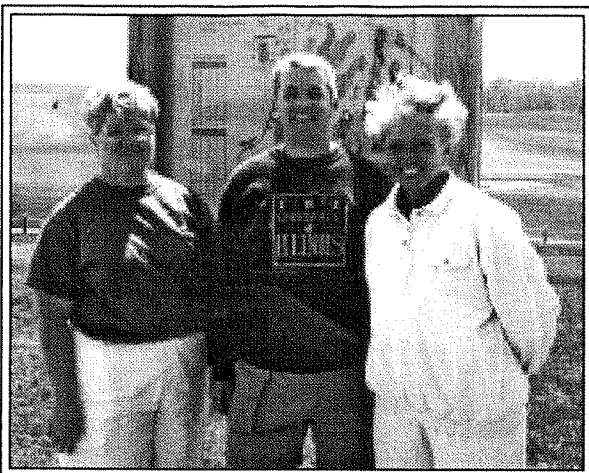
### APPLY NOW!!

The term of Byron Forest Preserve District Board Commissioner Gene Paquet will expire June 30.

Applications for this position may be picked up at the Ogle County Courthouse in Oregon during normal office hours, which are 8:30 AM-4:30 PM, Mon-Fri.

The completed applications must be returned to the county clerk's office no later than 4:30 PM on Friday, June 3.





*PrairieView's first hole-in-one for the '94 season was sunk by Dan King (middle) and witnessed by his mother, Darlene King (left) and friend, Connie Reber (right).*

## First Hole-In-One in '94

The first hole-in-one of the season at PrairieView Golf Course was hit by Byron resident Dan King (left) on April 23.

King was using an eight iron at hole number 13 when he accomplished the feat, which was witnessed by his mother Darlene King and Connie Reber, both of Byron.

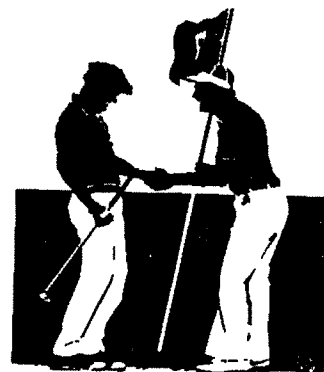
On April 22, Ed Sola, Rockford, holed out on his second shot from 150 yards for an eagle deuce on the par four 372-yard ninth hole.

PrairieView Golf Course is located on North German Church Road, Byron. For more information call 234-GOLF.

### Driving Range Drainage Work

The Byron Forest Preserve Board of Commissioners has approved major drainage work improvements for the PrairieView driving range. The improvements are intended to eliminate last year's soggy conditions, hopefully, even those caused by our "100-year rain".

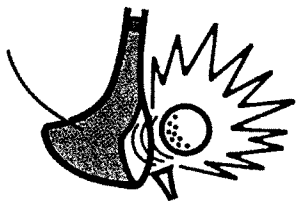
PrairieView apologizes for any temporary inconvenience in the coming weeks, as this project will be completed as quickly as possible.



**BYRON FOREST PRESERVE DISTRICT  
PRAIRIEVIEW GOLF COURSE  
7993 N RIVER RD  
BYRON IL 61010**

**BULK RATE  
U S POSTAGE PAID  
BYRON IL 61010  
PERMIT NO 50**

**JUNE SPECIAL!!  
ALL COTTON SWEATERS  
AND FLEECE SWEATSHIRTS  
20% OFF REGULAR PRICE  
IN THE MONTH OF JUNE!!**



# PrairieView Golfer

Jim Jennings, Interim Director  
Ken Ledene, Clubhouse Mgr./PGA Pro  
Steve Storz, Golf Course Supt.

Vinde Wells, Media Coord.  
Michelle Lipps, Media Asst.

1994 Vol. 3

7993 N. RIVER ROAD

BYRON IL

(815) 234-GOLF

## 1994 Gold Medal Classic Tournament

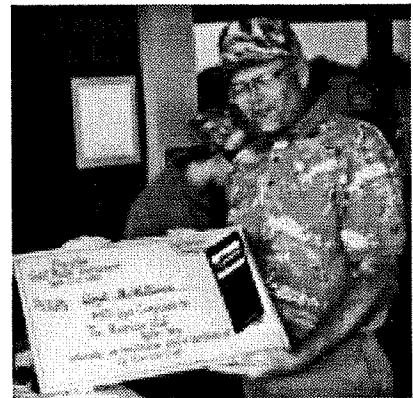
**Mark your calendar now** and make plans to enter the third annual "Gold Medal Classic" Golf Tournament, PrairieView's prestigious year-ending tournament. Held annually since PrairieView's opening in 1992, the tournament continues to grow each year. This year's event will be held on the weekend of September 10 & 11.

The tournament is open to all men and women amateur golfers over age 16. New for the 1994 tournament, is a change in the method of flighting players, which became necessary in order to accommodate the growing number of entries. All players will now be flighted after the completion of Saturday's first round rather than on Sunday's second round, as done in previous years.

Players will also now be competing within their own designated flight on Sunday's final round. The result will be an even more competitive tournament with the strong possibility of exciting head-to-head finishes! Final standings and prizes will be determined solely on a player's 36-hole gross score within his own flight.

Prizes will be awarded in five men's flights and two ladies' flights based on a full field of 120 players. Over \$4,000 in golf merchandise prizes were awarded in 1993. Former Rockford city champion Lloyd McWilliams (right) set the current PrairieView course record of 71 during last year's final round while playing in extremely windy conditions.

Entry forms may be picked up at the PrairieView clubhouse Monday - Sunday, from 6 am to dusk. **The deadline for entries is Tuesday, September 6, at 5 pm.** For further information, call the PrairieView clubhouse at 234-GOLF (4653).



## PrairieView Rated One of the Best!!

PrairieView Golf Course was rated one of northern Illinois' best in the August 1994 issue of *Golf Digest*.

PrairieView received a three and one-half star rating in an article which reviewed golf courses from suburban Chicago to Galena.

The ratings ranged from one star - "basic golf" to five stars - "golf at its best". In the ratings, PrairieView fell between three stars - "Very good. Tell a friend it's worth getting off the interstate to play." and four stars - "Outstanding. Plan your next vacation around it."

Only one course in the survey received a five star rating. *Golf Digest* is a national publication.

Clubhouse Manager/PGA Pro Ken Ledene said he was very pleased PrairieView was rated in the article.

"It's an honor to be rated with the other courses mentioned in the article," Ledene said. "It's especially impressive for a course as young as ours. The majority of the other courses mentioned are much more mature."

PrairieView opened in 1991. The 18-hole championship course boasts bent grass fairways, tees and greens. For more information, call (815) 234-GOLF.

## New Leaders

A change of leadership has taken place at the Byron Forest Preserve over the last several weeks, beginning with the early retirement of longtime director, Jack Philbrick, on June 30. Philbrick had been the forest preserve's director since 1982.

Byron Forest Preserve District Board President Robert M. Jarrett tendered his resignation July 19, citing health reasons. Jarrett is one of the forest preserve's founders and had served as board president since 1981.

Board Commissioner Jim Jennings is presently filling both positions. The board appointed Jennings to serve as interim director while they conduct a search for a new director through the Illinois Association of Park Districts. The board elected Jennings president when they met July 19.

Another change in leadership came June 21 when the Ogle County Board appointed George Ashby to the forest preserve board. Ashby took over July 1 for former Board Commissioner Gene Paquet, who did not seek reappointment.

The Ogle County Board will choose a commissioner to fill Jarrett's unexpired term when they meet Sept. 20. In April, all five commissioners will be elected for the first time. After the election, the successful candidates will draw straws for four-year and two-year terms. Board elections will be held every two years.

## Hogan Eagles

Byron resident Kim Hogan claimed an eagle on hole number 11 at PrairieView Golf Course on June 30.

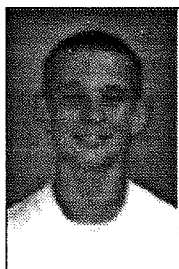
Clubhouse Manager and PGA Pro Ken Ledene said Hogan used a driver and a five-wood to reach the par five green in two strokes.

"He's the first golfer reported to eagle the hole by reaching it in two," Ledene said. "Being left-handed worked to his advantage on the dog leg. It's still great golfing to reach it in two."

Hogan was playing with Fred and Deb Brune, Byron, who witnessed the eagle.

Golfers should report all outstanding feats to the PrairieView staff. The updated list is posted on the clubhouse bulletin board.

## District Announces 100th!!



The volunteer program at the Byron Forest Preserve reached the century mark recently. Byron teenager Mike Lipps (left) signed on July 20 as the district's 100th volunteer.

Already Mike, who is 14, has helped out in a variety of ways - he's harvested prairie flower seeds, worked with the video camera at the Jarrett Prairie Center, cleaned windows, and done golf course maintenance tasks.

Volunteer Coordinator Betty Fetzer said she is excited to have reached the 100 milestone.

"I think it's great. We're really chugging along," she said.

Mike said it was easy to get involved as Byron Forest Preserve volunteer.

"I just asked," he said.

Mike, the son of Estill and Kathren Lipps, will be a freshman at Byron High School this fall. An enthusiastic junior golfer at PrairieView, he was also a member of the Byron Park District's championship Sandy Koufax baseball team this summer, and plans to play football and basketball during the school year.

## Golf Club at PrairieView

*Congratulations* to the "Golf Club at PrairieView" for a very successful first season to date!

With over 75 members, the golfers' association continues to host successful monthly events requiring a lot of individual time and effort.

The entire organization has been very supportive of PrairieView throughout the season. The Byron Forest District and the PrairieView staff are very appreciative.

The Golf Club recently conducted their first annual championship. Congratulations are due to Tim Mitchell, men's overall champion, and to Kris Dunham, new ladies' champion!

Kris also was able to establish a new ladies' course record for PrairieView with an "80" in her march to victory. Everyone who participated in the event, the flight winners, and other champions should be commended.

The future of the "Golf Club at PrairieView" looks bright as the young, growing organization continues to expand and plan for the upcoming years.

The PrairieView staff looks forward to working with the "Golf Club" association and to seek their input and advice in helping shape the future direction of PrairieView Golf Course.

## Golf Course Volunteers - Big Success!

As reported earlier this spring, a new volunteer program was initiated to assist PrairieView staff in routine course maintenance. Three months later, we are happy to report that the program has been a great success.

The golf course has benefitted greatly, especially in the area of tee maintenance. As the number of golf rounds played continues to increase every month, labor intensive tasks such as filling tee divots, become very important to maintaining quality playing conditions at PrairieView.

Betty Fetzer, volunteer coordinator, and her crew of 10 - 12 PrairieView volunteers are to be commended for their efforts this season.

Recently, two of PrairieView's regular junior golfers also became volunteer staff members. Anyone that's interested in helping, even for one day, please contact Betty at the Jarrett Prairie Center at (815) 234-8535.

## TURF NOTES

The Golf Course Maintenance Crew has been preparing for fall and winter projects. The following work is scheduled for the upcoming months:

### August 15 - September 30

**Washes** - Fill, seed, apply erosion mat

**Woods** - Tree Hog stumps, fill holes, seed bare areas

**Wear Areas** - Aerate, seed if necessary

**New Trees** - Mulch

**Sod** - Bare areas on 5, 7 fairways

### October 1 - November 30

**Fairways** - Install drain tile - Selected wet areas

**Bunkers** - 6, 11 greens - Fill and sod top half (wash too severely)

- Install drain tile - selected wet areas

- Install new sand - selected areas

### December

**Woods** - Prune suckers, low branches

- Cut down dead trees

- Open up area between driving range and 6 fairway

## NWIGCSA MEETING HELD

*The Byron Forest Preserve District hosted the North West Illinois Golf Course Superintendents Association's monthly meeting at the Jarrett Prairie Center on August 8. Pictured right are Naturalist Josh Skolnick, PrairieView Superintendent Steve Storz, and Mt. Carroll Golf Course Superintendent Duane Kloepping. Skolnick explains the varieties of prairie plants that thrive at PrairieView Golf Course.*



## Junior Golf Program



PrairieView's junior golf instruction program, expanded to nine weeks this season, has been a big hit! Attendance has remained strong leading up to the tournament/picnic conclusion on August 15.

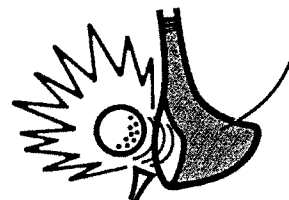
The kids seem to particularly enjoy the weekly contests, the chance to play on the golf course as part of the program, and most importantly, the prizes!

Mixed in with some golf instruction, rules discussion, and reminders on proper golf etiquette, PrairieView's young golfers of the future have been a great group to work with.

Again, many thanks to all the junior golf program volunteers for their help this year! Without their important assistance, the program would be much more limited in scope. We hope even more individuals will offer their help and time next year, as the program continues to grow.

Anyone who would like to offer suggestions or help with next year's junior instruction program, please contact Clubhouse Manager Ken Ledene at (815) 234-GOLF (4653).

# Ken's Clubhouse Notes...



## PrairieView Fall Hours

PrairieView Fall hours will begin September 6! The clubhouse and golf course will open at the following times:

September 6 - October 2:  
open at 7 am / Mon. - Fri.  
open at 6:30 am / Sat. & Sun.

October 3 - October 31:  
open at 8 am / Mon. - Fri.  
open at 7 am / Sat. & Sun.

Closing will continue to be at dusk, seven days a week weather permitting. Also, please call first to check on current frost conditions that may delay course opening after mid-September.



## First Hole-in-One

Rick Pearce, Monroe Center, hit his first hole-in-one ever at PrairieView Golf Course on Aug. 4. Pearce has been golfing for only five months.

He accomplished the feat on hole number 4 from 143 yards out. Tom Siefken, Rockford, witnessed the event.

## End-of-Season Pro Shop Sales

All Pro Shop men's shirts; PrairieView logoed sweaters, tee shirts, and shorts; and remaining jackets are now on sale at 30% off regular prices. Shop early for best selection. Gift certificates are available also.

## Lange Eagles on #6

Byron resident Heinz Lange used a driver and a seven iron to eagle on hole number 6 on Aug. 1.

Using a driver he made himself, Lange accomplished this feat from 512 yards (white tees).

"Heinz credited the new driver for an extra 20-30 yards. He regularly hits more than 300-yard drives with it. He's driven the green on number 9 several times with it," said Ken Ledene.

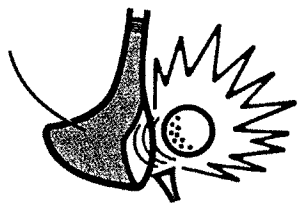
## Driving Range Repairs

Work on the driving range drainage will begin Aug. 16 and may necessitate closing it on occasion.

BYRON FOREST PRESERVE DISTRICT  
PRAIRIEVIEW GOLF COURSE  
7993 N RIVER RD  
BYRON IL 61010

BULK RATE  
U S POSTAGE PAID  
BYRON IL 61010  
PERMIT NO 50





# PrairieView Golfer

Jim Jennings, Interim Director  
Ken Ledene, Clubhouse Mgr./PGA Pro  
Steve Storz, Golf Course Supt.

Vinde Wells, Media Coord.  
Michelle Lipps, Media Asst.

1994 Vol. 4

7993 N. RIVER ROAD

BYRON IL

(815) 234-GOLF

## Great Season at PrairieView!

By Ken Ledene, Clubhouse Mgr/PGA Pro

As the end of the 1994 golf season quickly approaches, the PrairieView clubhouse staff, my assistant, Karla Coy, and myself would like to thank everyone for another terrific year of support.

PrairieView is pushing close to breaking the 30,000 round barrier as more golfers are enjoying our beautiful course every year. The number of season passholders has increased from 33 in 1992 to a total of 221 season passes this past season, including an impressive 93 individual junior passholders. The new expanded junior golf program had 118 young golfers enrolled this summer in a nine-week program.

Plans for the 1995 season are well under way. This fall, Golf Course Superintendent Steve Storz and his crew have been diligently working on projects and improvements to the course for next season.

PrairieView 1995 season passes will be on sale at the Jarrett Prairie Center soon for gift giving.

Great fall weather has allowed PrairieView to extend closing into November for the first time for walking golfers.

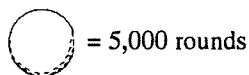
The staff at PrairieView and myself anxiously look forward to welcoming everyone back in 1995 for another fun season of golf.

### Golf Rounds Comparison\*

1993



22,251 golf rounds



1994



27,675 golf rounds

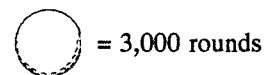
\* Represents totals through September 30 in both years.

### Cart Rounds Comparison\*

1993



6,671 cart rounds

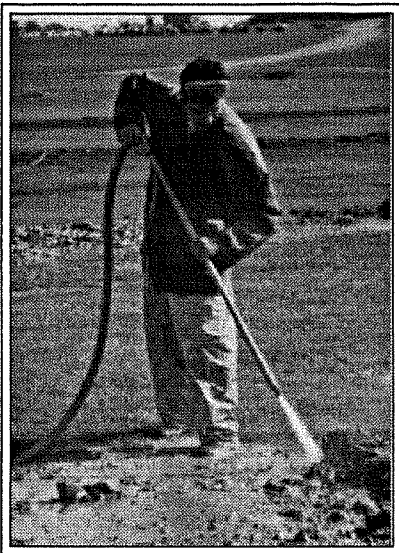


1994



9,726 cart rounds

\* Represents totals through September 30 in both years.



## What's "Jetting"?

Pictured left, Rick Casinger is "jetting" an area near the driving range. "Jetting" is a process of pumping high pressure water into the soil to remove the air and settle the soil immediately.

The Golf Maintenance Department recently installed new drainage at the driving range.

## Extended PrairieView Closing

PrairieView Golf Course will stay open beyond the normal October 31st closing for the first time! Due to the great fall weather, the season will be extended on aday-to-day basis for walking golfers only. No motor carts will be available after October 31st.

The golf course will be open seven days a week from 9am to 4pm weather permitting. **Regular nine-hole rates will apply whether playing nine or eighteen holes on weekdays or weekends!** Please call ahead for course conditions as frost will be likely on most days. Basic concession items will be available, however, the driving range will be closed. Call (815) 234-4653(GOLF) for more information. Reservations for November will be accepted only 24 hours in advance.

## TURF NOTES

PrairieView's Golf Maintenance Department has been working hard to complete their fall projects. The following has been completed:

- 1) Fix Erosion Areas - Park Maintenance hauled 1,000 yards of soil from a site at the preserve. Golf Maintenance leveled, seeded, mulched, and erosion matted all areas.
- 2) Driving Range Improvements - A contractor installed four drain tile lines. Golf Maintenance leveled, "jetted", and seeded the trenches and built and seeded three target areas.
- 3) New Trees Planted - Park Maintenance planted approximately 150 on sites selected by Clubhouse Manager Ken Ledene. Volunteers helped in the planting process. Golf Maintenance installed wood mulch around these and all other transplanted trees.
- 4) Woods Clearing - Park Maintenance removed undesirable species and thinned the wooded area between the driving range and 6 fairway.
- 5) Sodding - Golf Maintenance filled and sodded holes on 5 and repaired and sodded the drainage wash on 7.
- 6) Drainage - Golf Maintenance began installing "French drains" in wet areas on fairways and drain tiles in sand traps that hold rain water.

## Ken's Notes...

### Tee Sign Sponsors

PrairieView would like to thank all of our tee sign sponsors for the past three years. The beautiful redwood yardage signs and hole maps are provided totally by local sponsors.

Currently, there are a few openings for new sponsors for the next three-year period. For details, call Ken at (815) 234-4653(GOLF).



### Christmas Parties

The Byron Forest Preserve District is now accepting reservations for Christmas parties, anniversaries, and other events. Please call Chris at the Jarrett Prairie Center for more information on available dates, catering menus, and other special services at (815) 234-8535 Monday - Friday.



### Thank You, Volunteers

PrairieView's first season enlisting the help of volunteers was a huge success. A total of 458 hours were devoted to helping maintain tees, tree planting, and general course maintenance duties.

All golfers appreciate their conscious efforts to especially helping maintain our bent grass tees. A big thank you to Volunteer Coordinator Betty Fetzner for getting the program started.



## BRUNE APPOINTED TO BOARD

## '95 Season Passes

Fred Brune (upper left), Byron, was recently appointed to fill an unexpired seat on the Byron Forest Preserve Board of Commissioners.

The Ogle County Board named Brune Sept. 20 to fill the position left vacant when longtime Commissioner and Board President R.M. Jarrett retired in July. Brune assumed his post at the Sept. 20 board meeting.

Brune has lived in this area for five years and moved to Byron several months ago with his wife, Deb, and their five children. He is a member of The Golf Club at PrairieView.

Brune operates his own vehicle leasing firm and has been in business since 1979. He said he hopes to lend his business experience to the forest preserve board.

Brune said he plans to run for a board seat in next spring's election. All five board positions will be on the April ballot when commissioners will be elected for the first time in the forest preserve's 12-year history.

Christmas gift giving season is just around the corner and what better gift than a season golf pass at PrairieView!

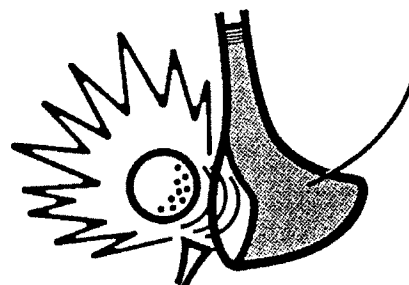
PrairieView is again offering **1995 season golf passes at the 1994 season pass rates** if purchased by noon on Thursday, December 23, 1994.

Gift certificates are available now at the Jarrett Prairie Center, Monday-Friday.

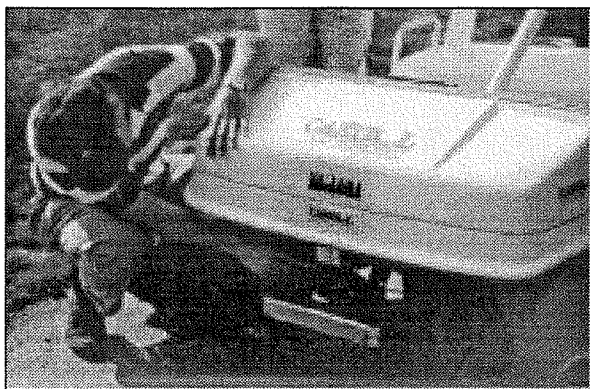
Certificates will be converted to golf passes in the spring of 1995 at the PrairieView clubhouse. Please call (815) 234-4653 (GOLF) or (815) 234-8535 for information and fees.

## Golf Feats of '94

Ed Sola	April 22	Eagle	Hole 9
Dan King	April 23	Hole in One	Hole 13
Bill Foltz	May 18	Hole in One	Hole 8
Fred Brune	May 18	Eagle	Hole 6
Arlen Molln	May 28	Eagle	Hole 14
Jerry Barger	May 31	Eagle	Hole 16
Art Snow	June 6	Eagle	Hole 11
Jim Staszewski	June 6	Hole in One	Hole 13
Dan King	June 21	Hole in One	Hole 13
Kim Hogan	June 30	Eagle	Hole 11
Jay Medlar	July 10	Eagle	Hole 18
Phil Harvell	July 12	Eagle	Hole 9
Dave Sible	July 18	Eagle	Hole 9
Fred Brune	July 28	Eagle	Hole 15
Kris Dunham	July 31	Shot 80	New Women's Competitive Record & Course Record
Rick Pearce	Aug. 4	Hole in One	Hole 4
Fred Brune	Aug. 15	Shot 69	Blue & White Tees
Larry Balch	Aug. 20	Eagle	Hole 9
Larry Balch	Sept. 4	Eagle	Hole 3
Lloyd McWilliams	Sept. 10	Shot 70	Gold Medal Tourn. Champ & New Men's Tournament Course Record
John Hinde	Sept. 10	Shot 32	Back Nine, Gold Medal Tournament, New Men's Tournament Course Record
Salley Wessels	Sept. 11	Shot 79	Gold Medal Tournament, Men's Blue Tees, New Women's Competitive Record
Fred Brune	Sept. 15	Eagle	Hole 3
Jeff Anderson	Sept. 21	Double Eagle	Hole 2
Ronald Carroll	Oct. 11	Hole in One	Hole 4



# *Cartrol* Demo Very Impressive!!



*PrairieView* clubhouse and maintenance personnel got a look at a unique approach to managing golf cart traffic Sept. 13 when two representatives of Cartrol Enterprises, West Chester, PA, demonstrated their electronic system.

In fact, Clubhouse Manager Ken Ledene and Golf Maintenance Superintendent Steve Storz liked the system so well that both made it a part of the operations plan they presented to the Byron Forest Preserve Board of Commissioners on Oct. 15.

Cartrol is an electronic barrier that keeps golf carts from going where they don't belong. It eliminates the need for ropes and signs, and makes the course rangers' lives much less hectic.

The system uses a 12-gauge wire, which is buried a few inches deep around the protected areas of the course. A radio signal is transmitted through the wire to create a "force field".

Each cart is equipped with a control box (pictured above) which activates an insistent warning beep when the cart enters the off-limits area. The driver then has a few seconds to get back onto the right path before the cart's forward power is interrupted.

Once the cart stops, the driver's only option is to put it in reverse, which remains functional, and back out of the protected area. At that point, the loud beep stops, forward power once again works, and the cart may continue in the right direction.

BYRON FOREST PRESERVE DISTRICT  
PRAIRIEVIEW GOLF COURSE  
7993 N RIVER RD  
BYRON IL 61010

BULK RATE  
U S POSTAGE PAID  
BYRON IL 61010  
PERMIT NO 50